



SW BARTON STREET

ATHLETIC FIELD

WETLAND

WETLAND

RAIN GARDEN AND TRAIL REALIGNMENT

EX. PICNIC AREA

CRUSHED ROCK TRAIL

BACKLESS BENCHES

CRUSHED ROCK PATH

2-5 PLAY AREA

5-12 PLAY AREA

SWING

EX. RESTROOM

SKATE SPOT

OPEN LAWN AREA

EXISTING PARKING

EX. HEADWATER OF LONGFELLOW CREEK

29th Avenue S.W.

29TH AVENUE SW

29th Avenue S.W.

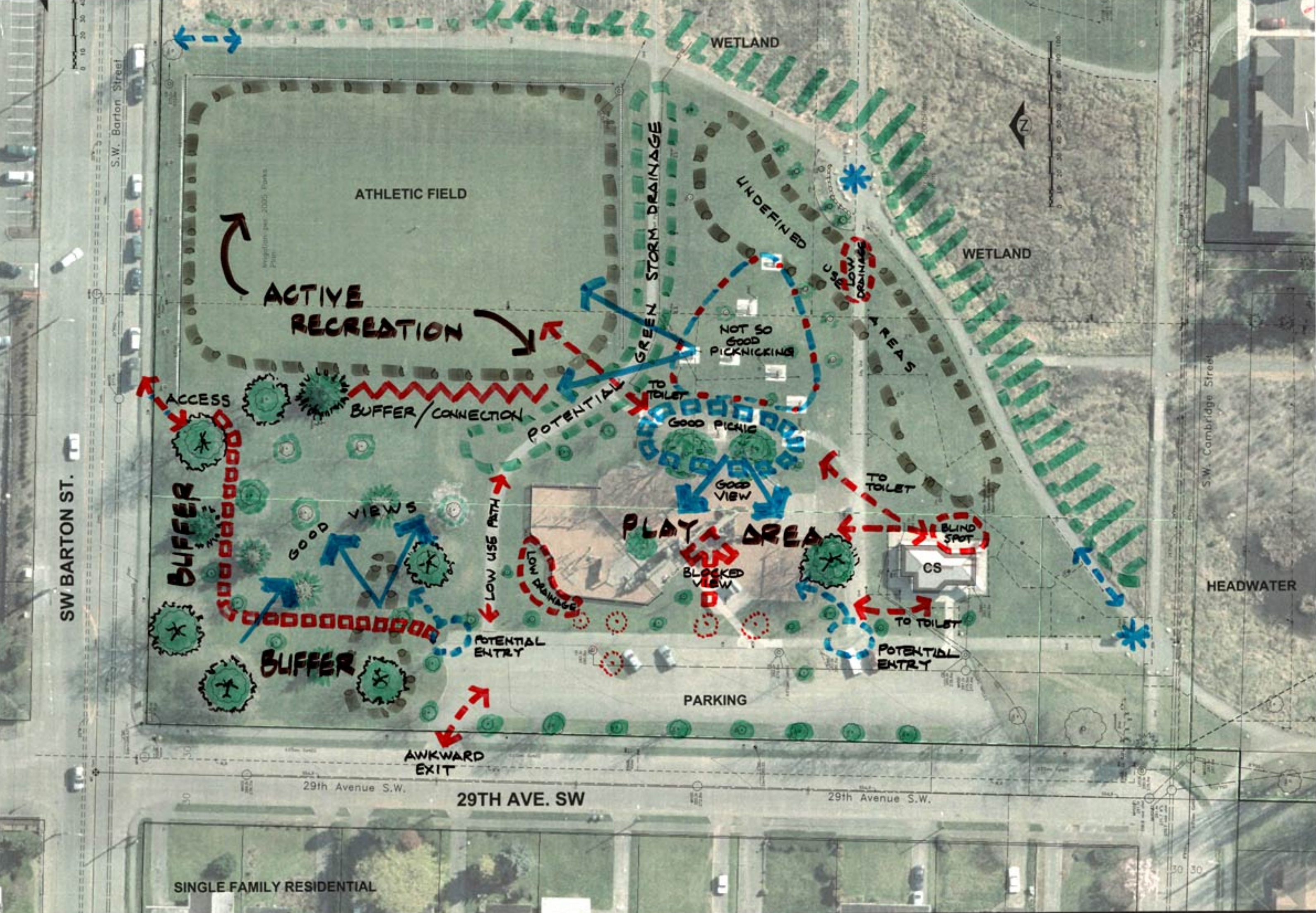
SINGLE FAMILY RESIDENTIAL



SCHEMATIC PLAN
ROXHILL PARK SKATE SPOT DEVELOPMENT & PLAY AREA RENOVATION

DATE: OCTOBER 12, 2011





ATHLETIC FIELD

ACTIVE RECREATION

GREEN STORM DRAINAGE

WETLAND

UNDEFINED AREAS

WETLAND

NOT SO GOOD PICKNICKING

ACCESS

BUFFER/CONNECTION

POTENTIAL

GOOD PICKNIC

GOOD VIEW

TO TOILET

BUFFER

GOOD VIEWS

PLAY AREA

BLIND SPOT

CS

BLOCKED VIEW

TO TOILET

BUFFER

POTENTIAL ENTRY

LOW USE PATH

LOW DRAINAGE

POTENTIAL ENTRY

AWKWARD EXIT

PARKING

29th Avenue S.W.

29TH AVE. SW

29th Avenue S.W.

SINGLE FAMILY RESIDENTIAL

S.W. Cambridge Street

S.W. Barton Street

SW BARTON ST.



OPPORTUNITIES & CONSTRAINTS

DATE: AUGUST 10, 2011

ROXHILL PARK PLAY AREA RENOVATION & SKATE SPOT

