

Proposed Landmark District.

Criteria “A”

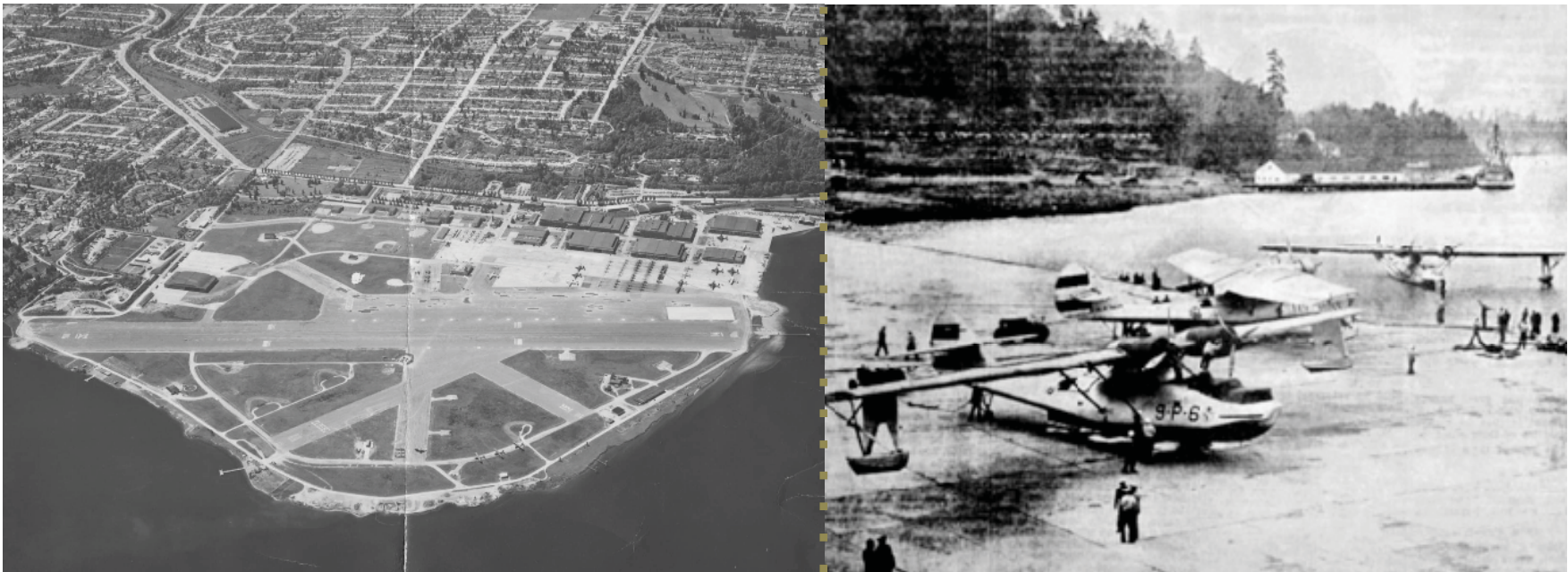
It is the location of a significant historic event.



The Around the World Flight that took off from Sand Point was a flight followed around the world and a significant event in aviation history. The visit by Lindbergh to Seattle is still remembered by some like one of the founders of the Mountaineers to rowed over from Kirkland to see this aviation hero land.

Criteria “C”

It is associated with a significant aspect of the political or economic heritage of our City, state or nation.



As Seattle's first Municipal Airport from 1920-1926 it was important to the early development of the Boeing Co. Later the expanded Naval Air Station Seattle was important as a supply, training and maintenance facility for the Pacific front during WWII.

Criteria “D”

It embodies the distinctive visible characteristics of an architectural style, period or method of construction.



The buildings of NAS Seattle comprise a large collection of WPA built colonial Revival, Art Deco and Art Moderne architecture and rare examples of pre-WWII aviation hangars.

Criteria “F”

It is an easily identifiable visual feature of the neighborhood and contributes to the neighborhood identity.



Naval Air Station Seattle is a prominent feature of our neighborhood. The iron gates and guardhouse, the flag pole and firehouse tower, the hangers and massive and lovely empty enlisted men’s quarters are part of the lives and memories of residents of NE Seattle and many beyond.