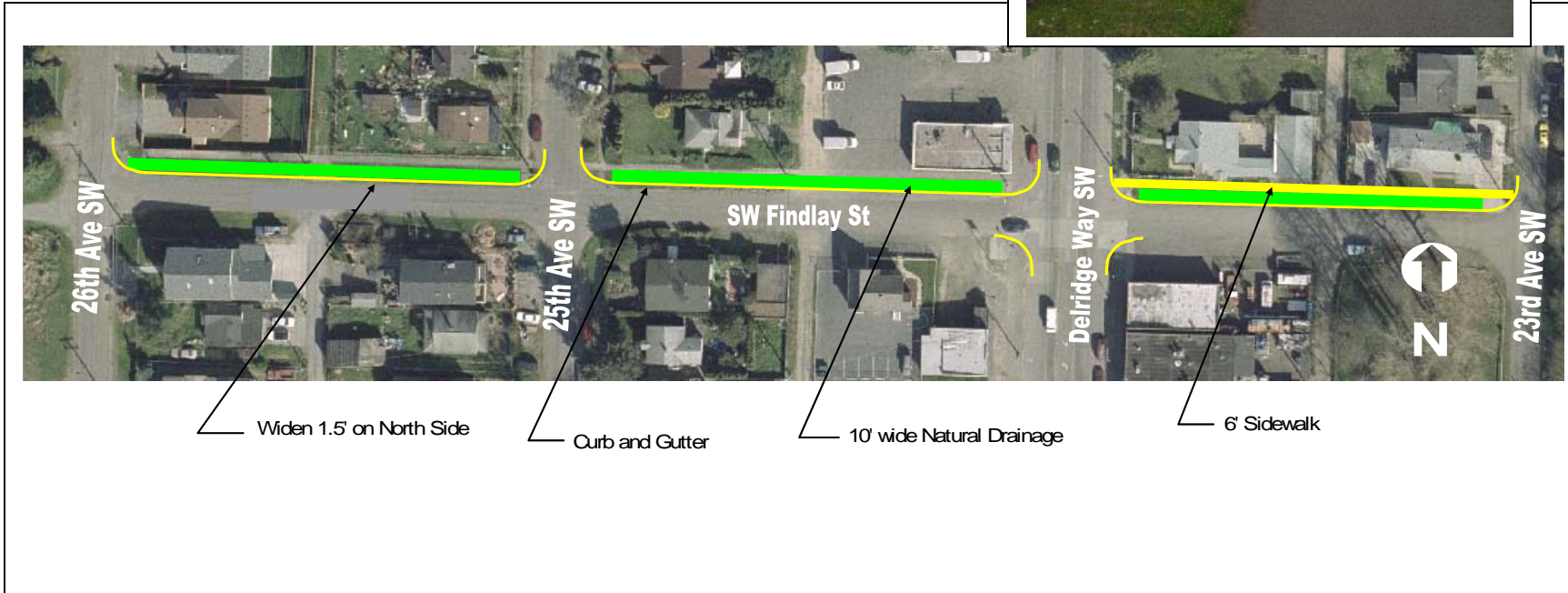




SW Findlay Street - 23rd Avenue SW to 26th Avenue SW



SW Findlay Street - 23rd Avenue SW to 26th Avenue SW



Project ID # 2007-397

Type of Improvement: Drainage Improvements
Neighborhood: Highpoint and Riverview

Approximate Length: 850 LF
Street Classification: Local Street

Applicant Description of Problem and/or Project:

Problem: None given.

Suggested Project: Sidewalks, curbing, drainage, & rain gardens for SW Findlay.

Potential Solution and/or Comments:

SW Findlay St from 26th Avenue SW to Delridge Way SW

- Widen 1.5 feet on the north side to meet the City's standard street width.
- Construct concrete curb, gutter and 10-foot natural drainage strip on the north side.
- Reconstruct curb ramps and curb returns on north side of SW Findlay Street and companion ramps on the south side of the street.

SW Findlay St from Delridge Way SW to 26th Avenue SW

- Widen 1.5 feet on the north side to meet the City's standard street width.
- Construct concrete curb, gutter, 10-foot natural drainage strip and 6-foot sidewalk on the north side.
- Reconstruct curb ramps and curb returns on north side of SW Findlay Street and companion ramps on the south side of the street.

Challenges/Tradeoffs:

- Parking may be prohibited on the north side of the street.
- Natural Drainage cost approximately \$330,000.

Preliminary Range of Cost: \$850,000 to \$1,050,000