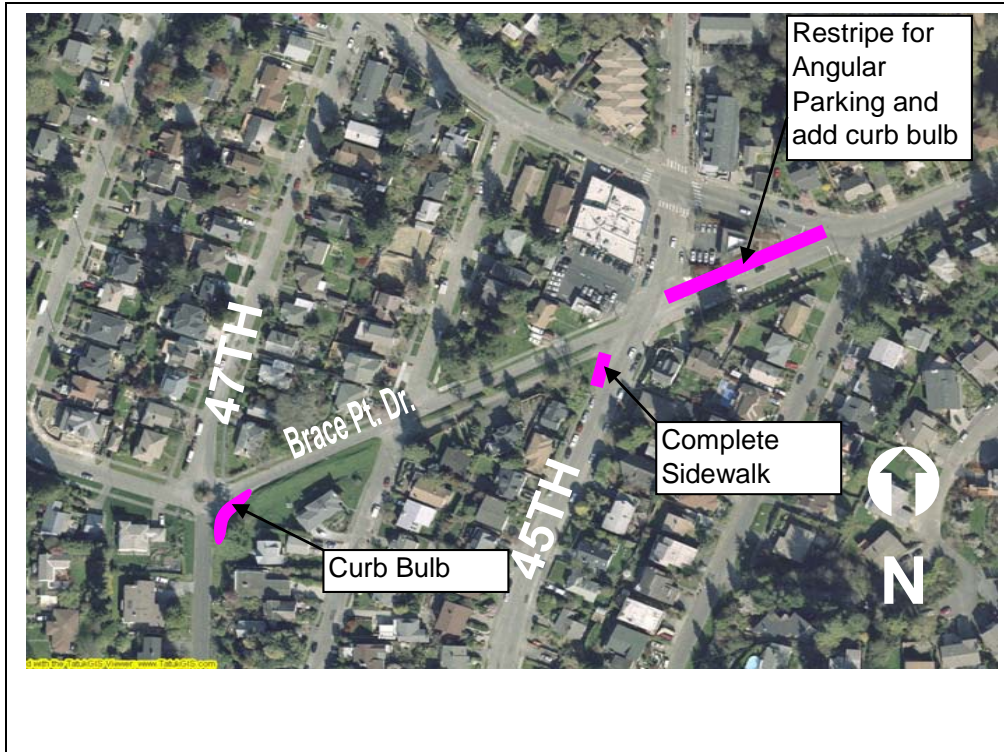




Fauntleroy Ferry Dock Vicinity



Fauntleroy Ferry Dock Vicinity



Project ID # 2007-309

Type of Improvement: Pedestrian Improvement
Neighborhood: Fauntleroy

Approximate Length: 400 Feet
Street Classification: Local Street

Applicant Description of Problem and/or Project:

Problem: The area is known as the greater business area at Endolyne, which encompasses several areas with safety issues, including: 1) confusion between 44th Ave. SW and 47th Ave. SW from Brace Point to SW Roxbury St. At this location, westbound traffic from Barton/44th Ave. SW must cross a double yellow line across and in front of traffic waiting at the stop sign facing east at the intersection to access Brace Point Place. In addition, traffic traveling north of 45th Ave. SW intersects at the triangle at high speeds, creating a safety issue for local foot traffic; and 2) Vehicles traveling northbound on 45th, 46th and 47th Avenues SW often speed through the Business Triangle; and 3) there is a need for increased parking in the business area.

Suggested Project: A series of pedestrian improvements, traffic calming devices and parking facilities in the vicinity of SW Brace Point Place, from 44th Ave. SW to 47th Ave. SW.

Potential Solution and/or Comments:

47th Avenue SW and SW Brace Point Drive

- Construct concrete curb bulb at the Southeast corner.

SW Brace Point Drive Business triangle.

- Stripe SW Brace Point Drive for angular parking and complete missing sidewalk segment at the Southwest corner of 45th and SW Brace Point Drive.

SW Trenton Street and 45th Avenue SW

- Investigate traffic calming measures.

Fauntleroy Place and Cloverdale.

- Replace asphalt path with cement concrete sidewalk

Preliminary Range of Cost: \$180,000 to \$ 240,000