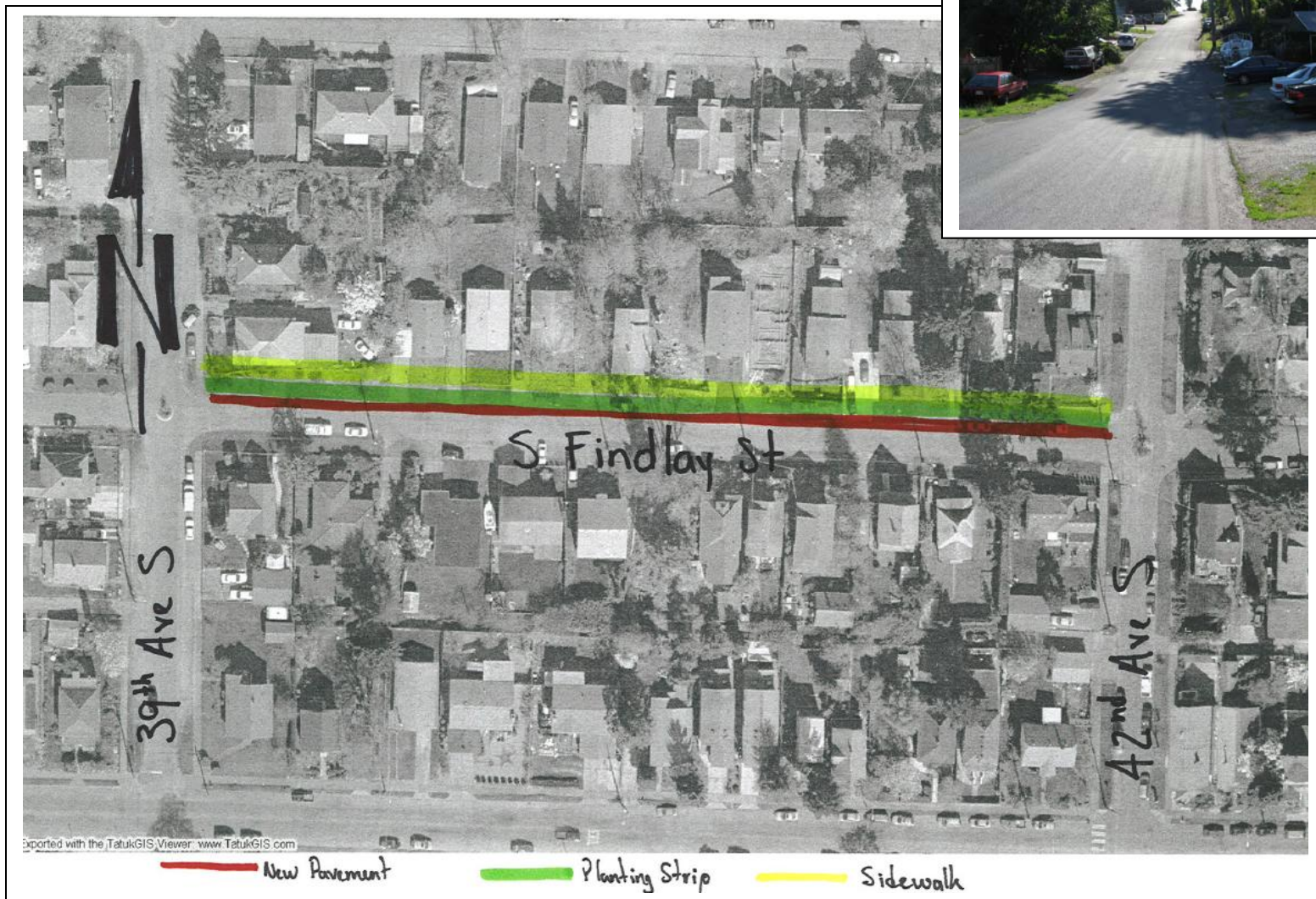




South Findlay Street - 39th Avenue South to 42nd Avenue South



South Findlay Street - 39th Avenue South to 42nd Avenue South



Project ID # 2007-305

Type of Improvement: Sidewalk
Neighborhood: Fairmount Park

Approximate Length: 650 feet
Street Classification: Local Street

Applicant Description of Problem and/or Project:

Problem: This location has neither sidewalks nor curbs, leaving no place to walk other than in the street. Since this location is near Graham Hill St Edward, Whitworth, and Aki Kurose schools, as well as the Brighton Playfield and several churches and day care facilities, pedestrian safety is of paramount importance. Some of the more pragmatic yet no less important concern surrounding our desire for curbs and sidewalks are erosion control, drainage, and the destruction caused by parking and or driving on the edges of property.

Suggested Project: Install curbs and sidewalks.

Potential Solution and/or Comments:

South Findlay Street from 39th Avenue South to 42nd Avenue South

- Project would result in a roadway with two travel lanes and sidewalk on north side of street.
- Construct concrete curb, gutter, 5-foot planting strip and 6-foot concrete sidewalk for approximately 650 feet on the north side of the street.
- Widen roadway 2.5 feet on the north side of the street to meet the City's standard street width.
- Construct new catch basins and storm sewer to collect street runoff.
- Because more than 5,000 SF of impervious surface is being constructed, install stormwater detention and water quality facilities.

Challenges/Tradeoffs:

- Parking may be prohibited on the north side of the street.
- Sidewalk and planting strip have been omitted on the south side of the street to avoid conflicts with utility poles.

Preliminary Range of Cost: \$ 720,000 to \$ 900,000