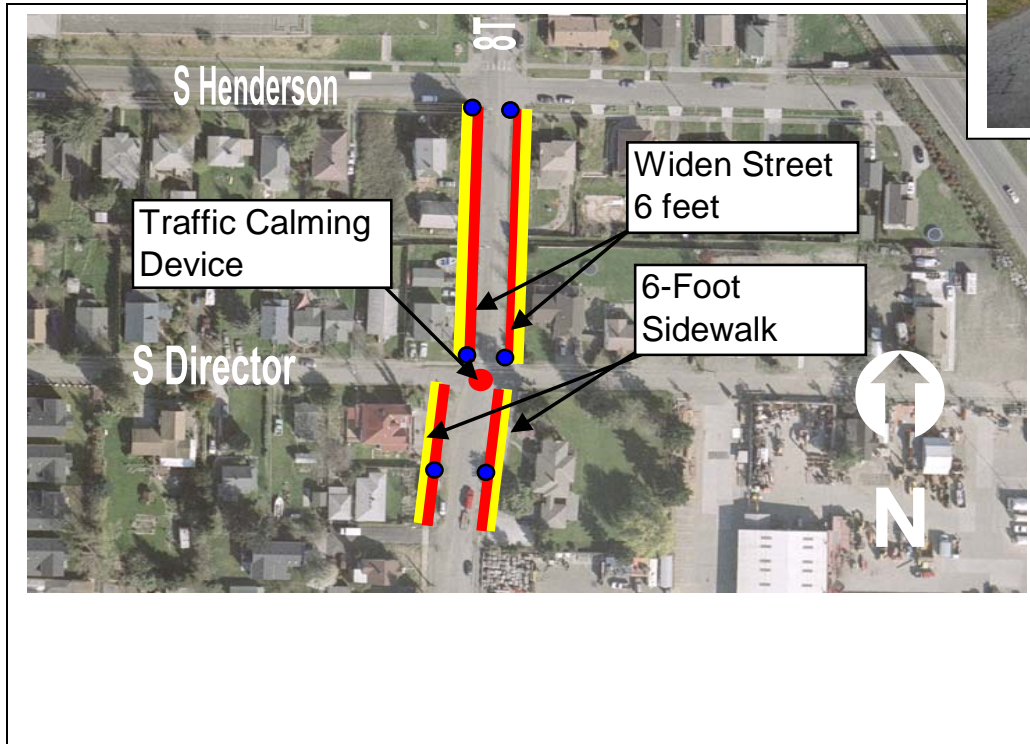


8TH Avenue S, S Henderson Street to S Director Street



8TH Avenue S, S Henderson Street to S Director Street



Project ID # 2007-089

Type of Improvement: Traffic Calming
Neighborhood: South Park

Approximate Length: 450 feet
Street Classification: Collector Arterial

Applicant Description of Problem and/or Project:

Problem: 8th Ave S can be exploited as a 'cut through' from the industrial S 96th St corridor; however, 8th Ave S is adjacent to Concord Elementary School.

Suggested Project: Install traffic circle and associated infrastructure to control street water and to calm traffic near Concord Elementary School. Designs and costs were completed with the neighborhood plan.

Potential Solution and/or Comments:

8TH Avenue S, S Henderson Street to S Director Street

- Construct concrete curb, gutter, and 6-foot concrete sidewalk for approximately 450 feet on both sides of the street.
- Widen street 6 feet on both sides of the street to meet the City's standard width of 36 feet for a collector.
- Project would result in a new roadway section of 2 travel lanes with parking on both sides.
- Construct new catch basins and storm sewer to collect street runoff.
- Stormwater detention and water quality facilities would be necessary because more than 5000 SF of impervious area is being constructed.

Challenges/Tradeoffs:

- Traffic calming measures need to be further evaluated by SDOT.
- If a deviation from City standards for street width could be obtained, cost would be decreased.

Preliminary Range of Cost: \$ 1,120,000 to \$ 1,380,000