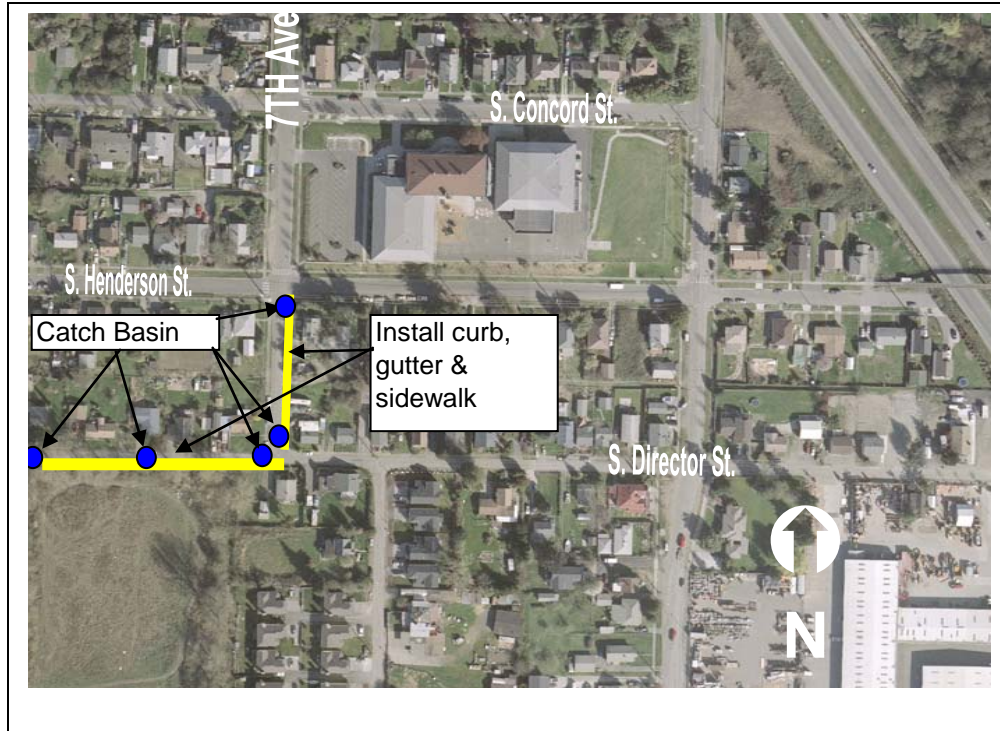


South Director Street and 7TH Avenue S



South Director Street and 7TH Avenue S

Project ID # 2007-088

Type of Improvement: Pedestrian Improvement
Neighborhood: South Park

Approximate Length: 1420 feet
Street Classification: Local Street

Applicant Description of Problem and/or Project:

Problem: None given.

Suggested Project: Improve streets and sidewalks. Re-stripe all existing crosswalks on 14th Ave S, 8th Ave S, & S Cloverdale (SDOT). Improve traffic signal timing and facilitate westbound traffic from northbound 14th Ave S with a left -turn signal - should not require a new turn lane, just a reconfiguration of the traffic signal (SDOT). Explore potential for sidewalks to connect Concord Elementary to Marra Farms community center (SDOT). Complete pedestrian lighting begun in 2004 along Cloverdale between 14th Ave S and 5th Ave S, install pedestrian lighting on 8th Ave S, lighting at community center playfield, tennis courts, and children's play area (SCL, SDOT) Supports Youth Development recommendation 1.1k and Public Safety recommendation 5.1e. Prune the trees on 12th Ave South between Sullivan and Dallas to light the street for pedestrians (SDOT).

Potential Solution and/or Comments:

- Construct new curb, gutter and sidewalk on 7th Avenue South between S. Henderson St and S. Director St to connect Concord Elementary to Marra Farms community center.
- Construct new curb, gutter and sidewalk on S. Director St frontage of Marra Farms community center.
- Construct new catch basins and connecting storm sewer lines where new curb, gutter and sidewalk is constructed to collect street runoff.
- It was assumed that other elements in the suggested project are either outside the scope of SDOT implementation (i.e. lighting at the community center playfield) or would be covered by other SDOT programs (i.e. re-striping of existing crosswalks would be handled by SDOT's pedestrian program).

Challenges/Tradeoffs:

- Parking may be prohibited on each side of the street where curb, gutter and sidewalk is constructed.
- Combine with SPU project if possible to take advantage of contractor who will already be on-site (preliminary opinion of cost assumes a separate contract to construct proposed improvements).
- A site visit was not conducted for this project (estimate was based on available SPU drawings). If this project were to move forward, a site visit is recommended to confirm assumptions.

Preliminary Range of Cost: \$ 570,000 to \$ 710,000