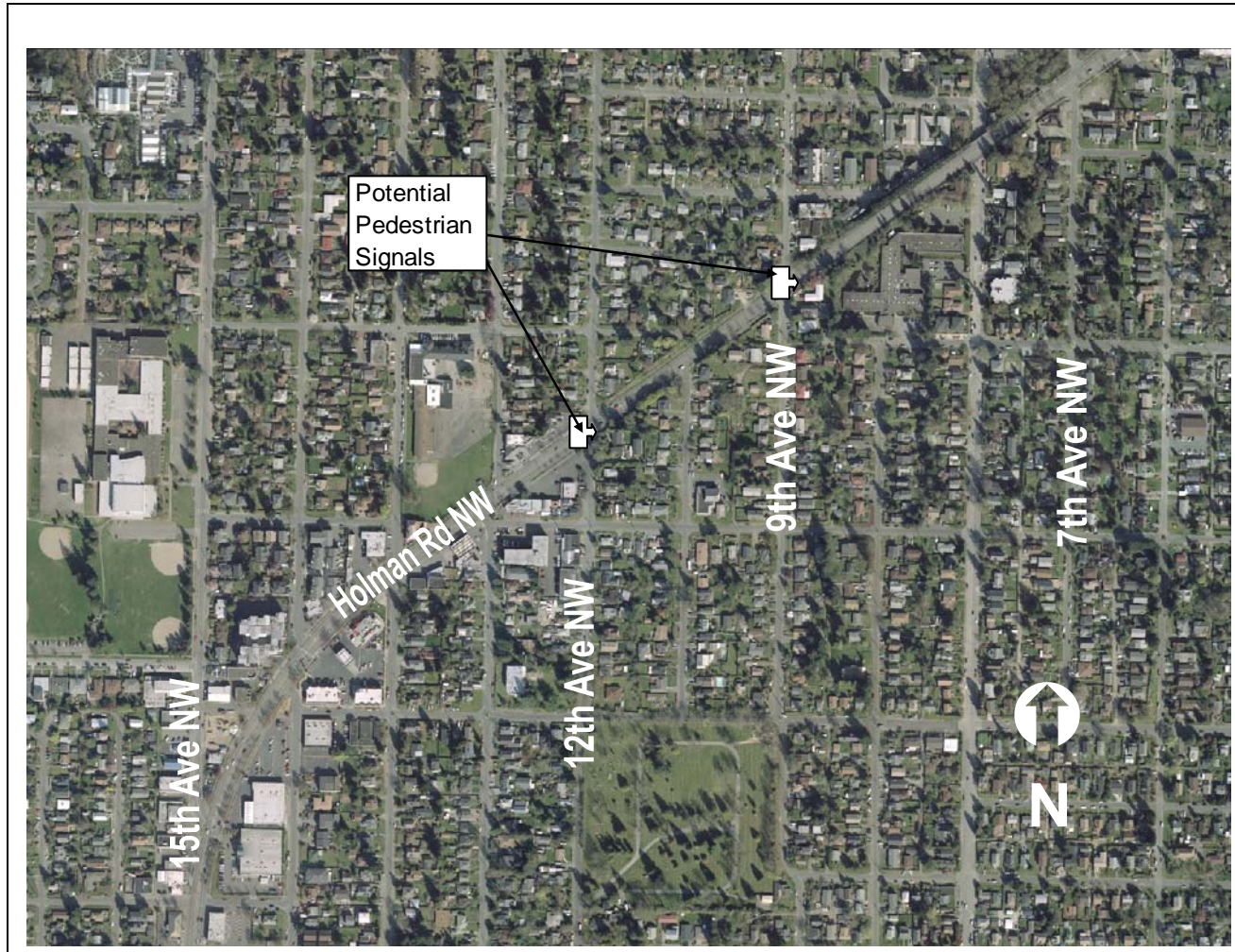


# Holman Road / 15th Avenue NW Corridor



# Holman Road/15th Avenue NW Corridor

**Project ID # 2007-467**

**Type of Improvement:** Pedestrian Improvement  
**Neighborhood:** Crown Hill

**Approximate Length:** 3,500 feet  
**Street Classification:** Principal Arterial

## Applicant Description of Problem and/or Project:

**Problem:** The speed limit on this route is 30mph, but traffic regularly moves 10-15 miles over the speed limit. We believe that a system of pedestrian accurate crossings and visual speed controls along Holman Road/15th Ave NW will help to keep speeds manageable and make it safer for pedestrian, bicyclists, and cars, needing to cross the road. Other goals reached by this: We have many families traveling to/from Whitman MS, Whittier Elementary, North Beach Elementary and Small Faces Preschool. Safe routes to local business and busses. Many community members need to cross Holman to access businesses and busses running in both directions. Soundview park & playfield, Crown Hill Elementary School park and playfield, Carkeek trail & Baker park. We have senior homes, youth homes, and Whitman MS, Whitman MS has around 1200 students, many of whom use the city busses and patronize the businesses among Holman Road/15th. The 13th Ave overpass is not ADA compliant. Wheelchairs, strollers and bicyclists must cross at either 6th Ave NW or Mary.

**Suggested Project:** Pedestrian actuated system along Holman Road at 7th Ave NW, 9th Ave NW, and 12th Ave NW. Visual Speed Control: speed limit-post larger speed limit signs, paint speed limit on ground, create center median pockets along Holman Road/15th Ave corridor. For Holman Road between 8th Ave NE and 12th Ave NW-pressure wash the mold/mildew moss off the concrete, trim up ivy, replace or repaint rusted pedestrian railing-colorful signage, so it's not overlooked.

## Potential Solution and/or Comments:

Holman Road/15<sup>th</sup> Avenue NW Corridor

- Install pedestrian actuated traffic signals on Holman Road at the intersections of 9<sup>th</sup> Ave NW and 12<sup>th</sup> Ave NW. Additional analysis will need to be conducted by SDOT to confirm whether the pedestrian signal is warranted.
- Evaluate options to upgrade speed limit signs.
- Install center median pockets throughout the corridor (assumed approximately 3,500 feet).

## Challenges/Tradeoffs:

- SDOT is still evaluating potential pedestrian signals Holman Road and the intersections of 9<sup>th</sup> Ave NW and 12<sup>th</sup> Ave NW.
- SDOT does not paint speed limits on the street.
- No site visit was conducted for this project. It was assumed that approximately 3,500 of planting medians would be constructed within the corridor. The potential location of center median pockets will need additional analysis to determine feasible locations. Approximately \$1.4M to \$1.7M of the estimated cost for this project is attributed to design and construction of medians. If this project were to be selected, additional confirmation of assumptions is recommended.
- Making the 13<sup>th</sup> Ave NW overpass ADA compliant would cost over \$1.2 million per preliminary SDOT estimates, and is therefore not included in the preliminary range of cost below.

**Preliminary Range of Cost:** \$ 1,900,000 to \$ 2,340,000