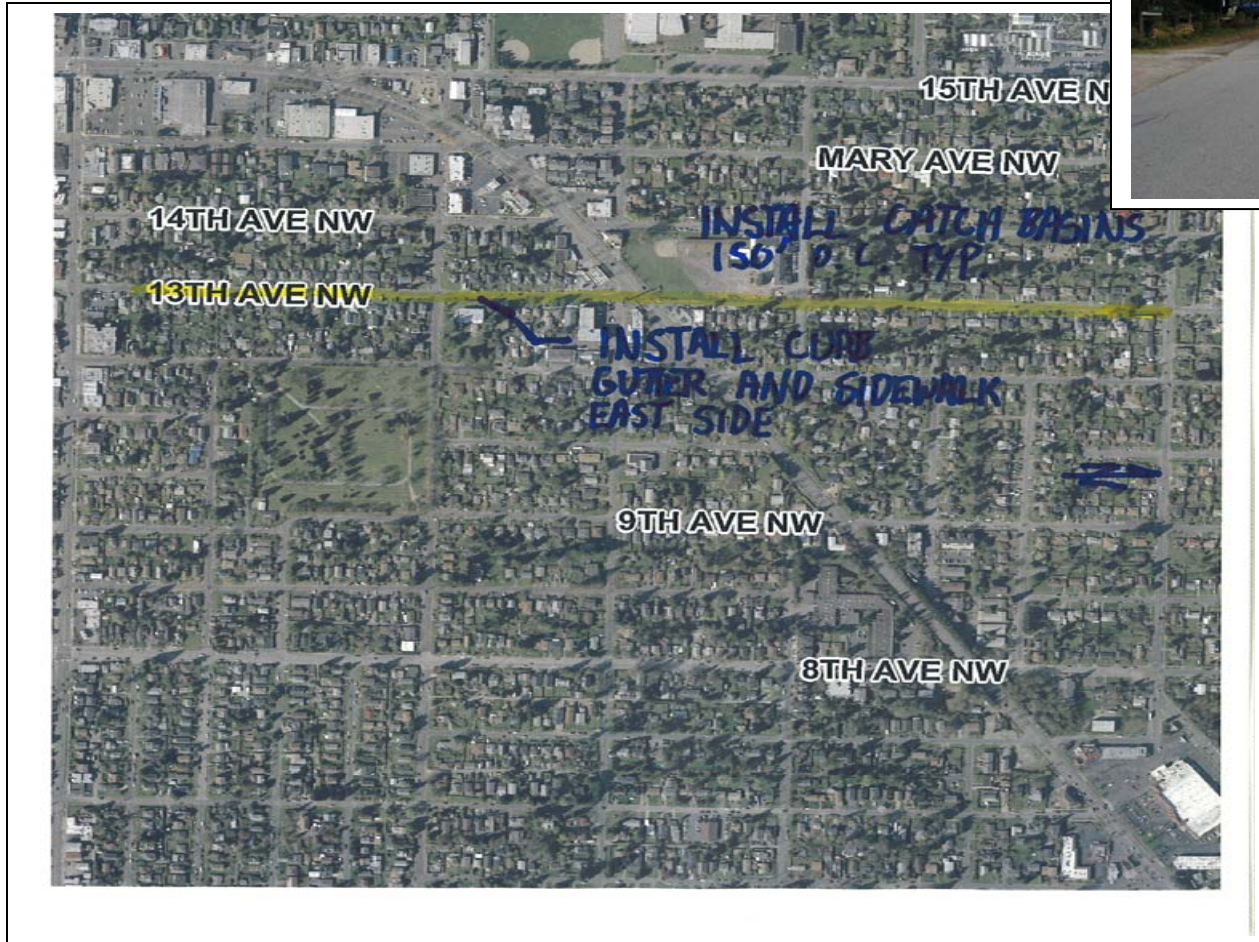


13th Avenue NW: NW 85th St. to NW 100th St.



13th Avenue NW: NW 85th St. to NW 100th St.

Project ID # 2007-466

Type of Improvement: Sidewalk
Neighborhood: Crown Hill

Approximate Length: 3900 feet
Street Classification: Local Street

Applicant Description of Problem and/or Project:

Problem: A major pedestrian arterial, 13th Ave NW connects arterial NW 100th, Holman Road through to NW 85th Street. Along this route is Crown Hill Park, Small Faces Preschool, Crown Hill Activity Center, Indian Youth Services, businesses and bus routes on Holman Road, and busses and businesses on NW 100th and 85th. Whittier Elementary School is located on 13th Ave NW just across 85th. We have many families traveling to/from Whitman Middle School, Whittier Elementary, North Beach Elementary, and Small Faces Preschool, Soundview Park & playfield, Crown Hill Elementary School Park and playfield, Carkeek Trail & Baker Park, senior homes, youth homes, and Whitman Middle School. Whitman MS has around 1200 students, many of whom use the city busses and patronize the businesses along Holman Road/15th. Note: 13th Ave NW between 95th and Holman has a narrow road with a very wide drainage ditch. Neighbors like the design of the sidewalks in Broadview with one side of the road wide and curved to slow traffic.

Suggested Project: Install sidewalks / boulevards.

Potential Solution and/or Comments:

13TH Ave. NW: 85TH to 100TH

- Construct concrete curb, gutter, and 6-foot concrete sidewalk for approximately 3900 feet along the east side of the street.
- Construct new catch basins and storm sewer to collect street runoff.

Challenges/Tradeoffs:

- Street and right of way are not wide enough to allow for a median
- Planting strips have been omitted in order to avoid steep slopes that would require costly retaining walls or need for additional right of way

Preliminary Range of Cost: \$ 3,900,000 to \$ 4,900,000