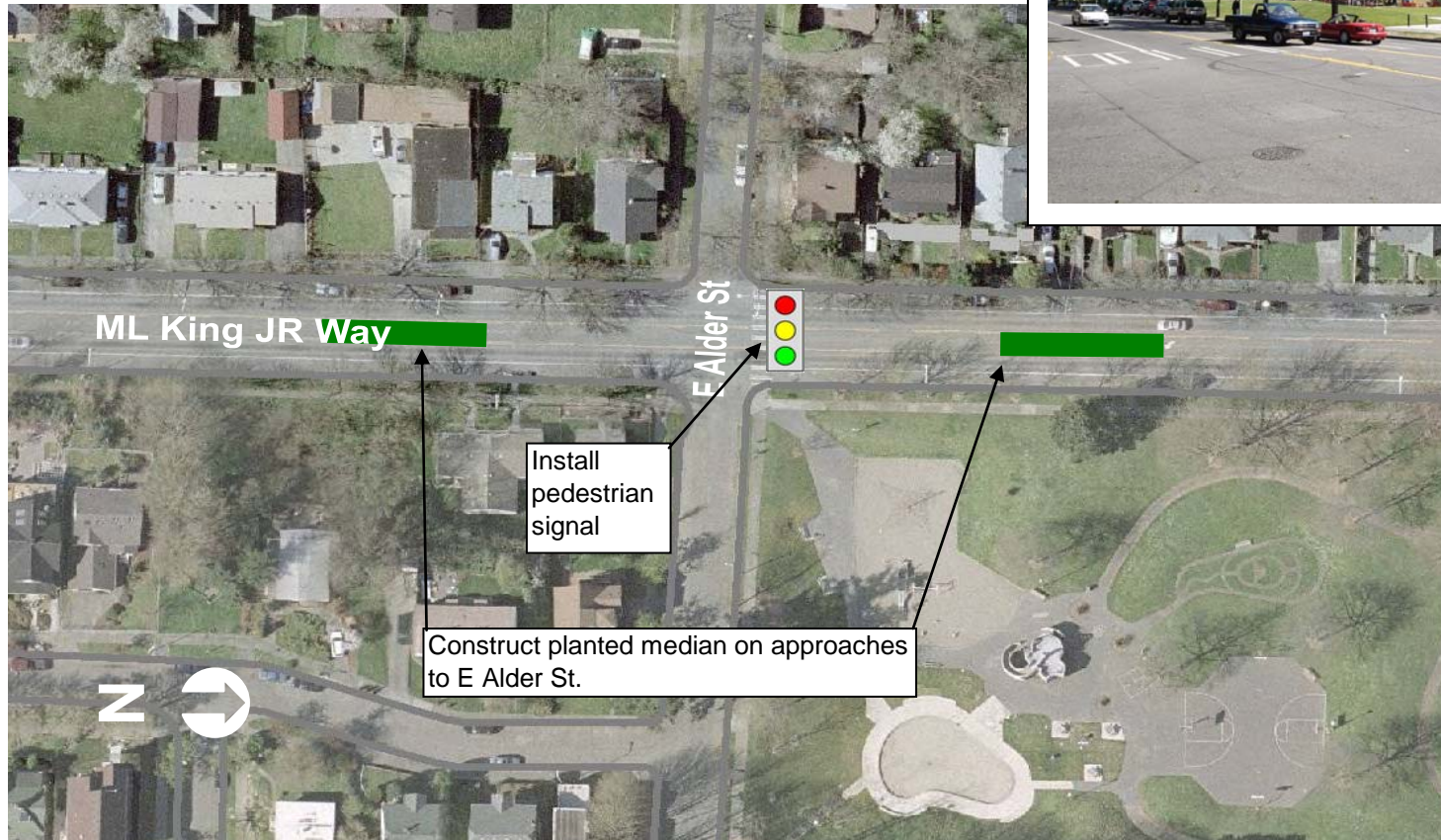




Martin Luther King Way – At East Alder Street



Martin Luther King Way – At East Alder Street



Project ID # 2007-481

Type of Improvement: Lighting
Neighborhood: Central District

Approximate Length: 60 feet
Street Classification: Minor Arterial

Applicant Description of Problem and/or Project:

Problem: Approximately 10,000 residents, many of them school children, will benefit by this project: by much improved pedestrian access to schools and parks west of Martin Luther King Way (Leschi Elementary School, Seattle Girls School, Flo Ware Park, Powell Barnett Park, Frink Park and Leschi Park) and by improved access to shopping, jobs, Douglass-Truth Library and schools (Washington Middle School and Garfield High School) to the east of MLK Way. The existing condition is too wide a street to easily cross, considering the fast traffic and turning that are common to the MLK Way. The existing condition fails to ignore new factors such as changes in lifestyles to walk more for health, and greatly upgraded parks (Flo Ware Park and Powell Barnett Park) that are magnets for the children, as well as the new school (Seattle Girls School) and prospects for reducing the use of school buses for high school students, who may elect to walk rather than to ride Metro buses.

Suggested Project: Martin Luther King Way is a barrier for neighborhoods to the West and the East. This is difficult especially for school children walking to Leschi School and the Seattle Girls School and for families, especially children, who want to play in the newly renovated Flo Ware Park and the soon-to-be-renovated Powell Barnett Park. Traffic is fast on Martin Luther King Way and the street is wide. For pedestrian safety, we want a pedestrian island, and a pedestrian crossing at East Alder with flashing light, to make Powell Barnett Park available to children living west of MLK.

Potential Solution and/or Comments:

Martin Luther King Way at East Alder Street.

- Remove existing pavement in center left-turn lane on Martin Luther King Way for an area of 8-foot wide for approximately 30 feet on each side of E Alder St to create median islands.
- Construct median island at approaches to E. Alder Street, and a pedestrian signal at E Alder St.

Challenges/Tradeoffs:

- The requested pedestrian island at E. Alder Street would prevent left-turning vehicles from accessing E Alder St from Martin Luther King Way. A median island at the approaches of the left turn pockets was used as a substitute.
- The potential median island may prevent left-turn access into some driveways.
- SDOT will need to evaluate whether a pedestrian signal meets warrants at this location.

Preliminary Range of Cost: \$ 190,000 to \$ 250,000