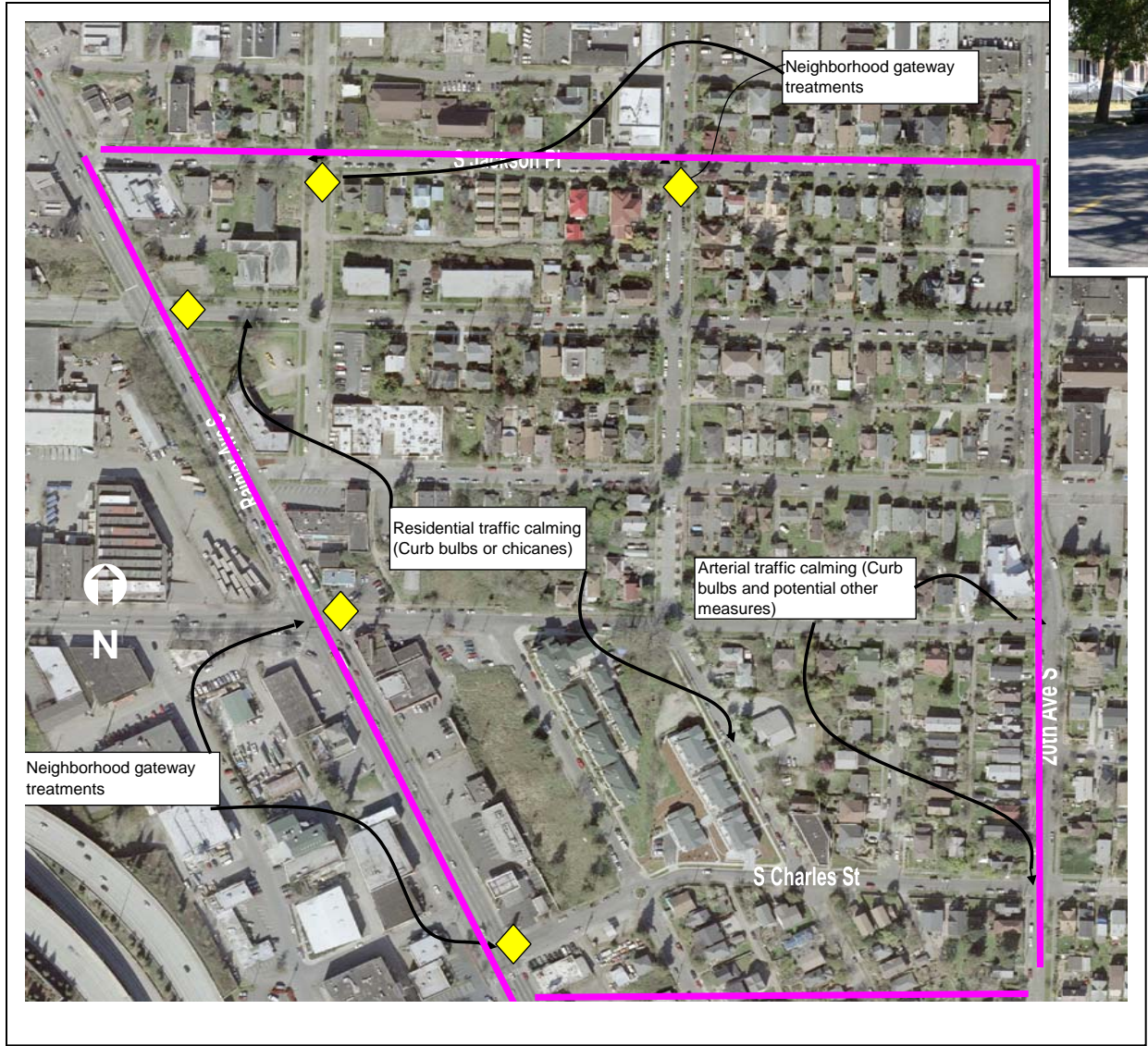


Jackson Place - traffic calming



Jackson Place - traffic calming



Project ID # 2007-379

Type of Improvement: Traffic calming
Neighborhood: Jackson Place

Approximate Length: 1.25 miles
Street Classification: Local Streets, Collector Arterial

Applicant Description of Problem and/or Project:

Problem: Traffic calming has been a City and Jackson Place priority for a number of years. The community has worked to create an actionable design with neighbor and SDOT input, but the goals and tasks created to implement the Central Area Action Plan remain unmet. The need for implementation is even greater than when the plan was originally drafted in the early 1990s. Massive development in and around the neighborhood has begun, with over 1,000 units of housing and almost 750,000 square feet of retail/commercial space under construction or proposed for permitting in and nearby the community. This amount of development will overrun the neighborhood. The City's further assistance is needed in implementing the goals and actions of the Plan, and assisting the JPCC in constructing traffic calming devices. See attached map.

Suggested Project: A consultant hired by the JPCC in March, 2007 focused on concerns voiced in community surveys and drew up a number of traffic calming recommendations. They include: 1) Calming measures at neighborhood gateways – Rainier Ave. S. and the following North-South streets serving as entrances to Jackson Place – S. Charles, S. Dearborn, S. Lane, S. Weller, S. King, S. Jackson Pl. and neighborhood gateways along Jackson Pl. 2) Residential traffic calming at 18th Ave. S., which has become a much traveled north-south residential street. 3) Residential traffic calming at east-west residential streets. 4) Collector arterial level calming along 20th Ave. S., a street that holds two schools and serves as a walking route for two other schools. The street also has a church and a food bank. An NSF award would allow the JPCC and the City to meet shared goals for implementing traffic calming in the Jackson Place neighborhood, and improve the quality of life and public safety of its residents and visitors.

Potential Solution and/or Comments:

Area bounded by S. Jackson Street on the north, Rainier Ave S on the west, S. Bush Place on the south, and 20th Ave on the east

- Construct a series of mid-block curb bulbs or chicanes as residential traffic calming treatments on 11 blocks interior to the neighborhood.
- Construct neighborhood gateways that consist of small curb bulbs at four key residential streets.
- Construct two sets of curb bulbs, plus evaluate and construct potential arterial traffic calming on 20th Ave S.

Challenges/Tradeoffs:

- The specific design and location of all components still needs to be developed collaboratively with the community, with consideration of parking impacts, driveway locations, and drainage impacts.
- Some traffic calming solutions in some locations could impact on-street parking significantly.
- Crosswalk markings would be evaluated by SDOT after other pedestrian improvements are constructed.

Preliminary Range of Cost: \$ 1,350,000 to \$ 1,650,000