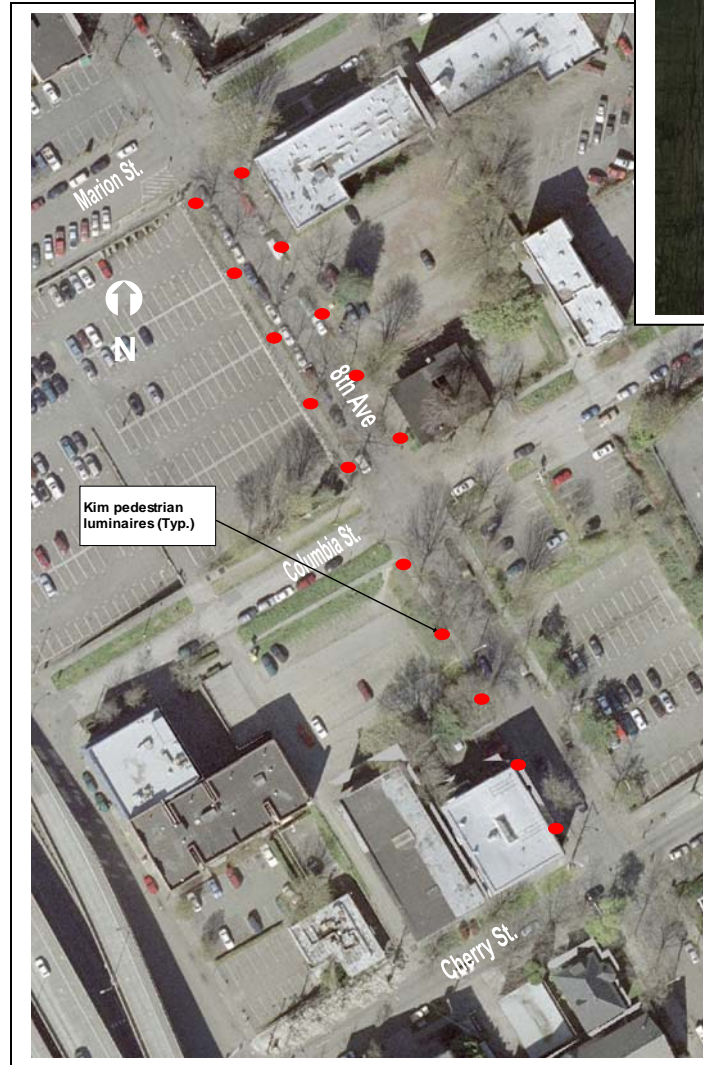




8th Avenue – Marion Street to Columbia Street

8th Avenue – Columbia Street to Cherry Street



8th Avenue – Marion Street to Columbia Street 8th Avenue – Columbia Street to Cherry Street



Project ID # 2007-375

Type of Improvement: Lighting Improvements
Neighborhood: First Hill

Approximate Length: 700 feet
Street Classification: Local Street

Applicant Description of Problem and/or Project:

Problem: Eighth Ave. is identified as a primary pedestrian corridor in our Plan. We strongly value the large trees in the neighborhood; however, the current street lighting is inadequate for safe pedestrian travel. The First Hill Imp. Assoc. is forming a Lighting District with SDOT to install "Kim Curvelinear" pedestrian night lighting, however, only new developments will be required to put them in. Four major redevelopments have agreed to do so between Seneca & Cherry. These 2 blocks will not be redeveloped for a long time and are key to solving the safety concerns for 8th Ave and providing a much needed pedestrian improvement for this key corridor in our plan. The lighting would match those going in on either side of those blocks, which are being provided by private developers. Minimal sidewalk disturbance would be needed due to the grass medians that now exist.

Suggested Project: Lighting.

Potential Solution and/or Comments:

8th Avenue from Marion to Columbia St. and from Columbia St. to Cherry

- Install 10 "Kim Curvelinear" pedestrian luminaires along the east and west sides of 8th Avenue between Marion and Columbian Street.
- Install 5 "Kim Cruvelinear" pedestrian luminaires along the west side of 8th Avenue between Columbia and Cherry.

Challenges/Tradeoffs:

- Getting permission to trim trees from the City.

Preliminary Range of Cost: \$ 240,000 to \$ 300,000