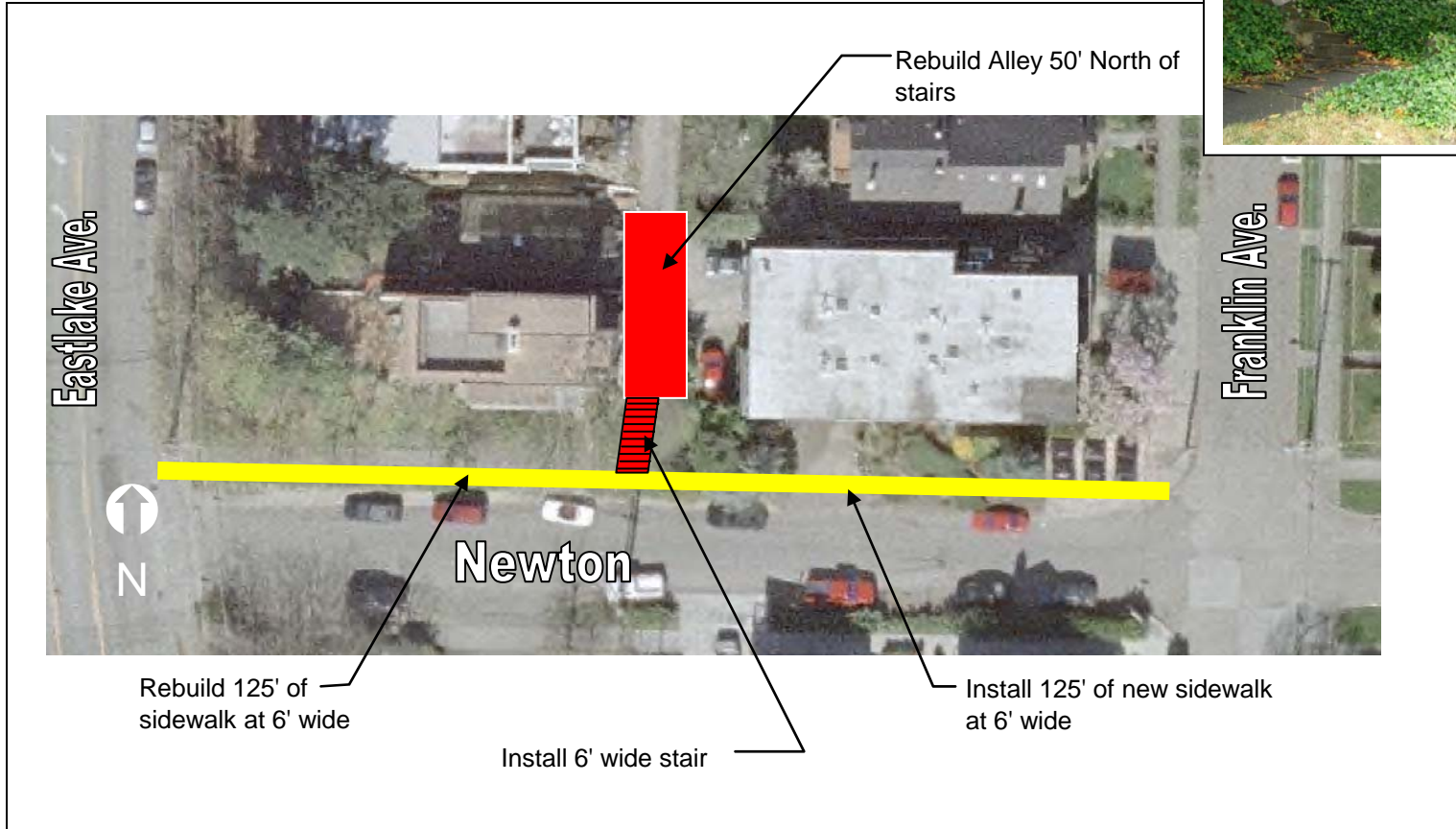


E Newton St between Franklin Ave and Eastlake Ave



E Newton St between Franklin Ave and Eastlake Ave



Project ID # 2007-372

Type of Improvement: Sidewalk
Neighborhood: Eastlake

Approximate Length: 150 feet

Applicant Description of Problem and/or Project:

Problem: The most serious missing sidewalk in the Eastlake neighborhood is on the North side of E Newton St where the sidewalk goes up from Eastlake Ave only to the alley, while the upper (Eastern) half-block has landscaping and parking that force the pedestrian into the street. At its extreme south end, the alley is undeveloped right-of-way and needs a staircase.

Suggested Project: Sidewalk on Newton St East of Eastlake Ave and staircase from Newton to alley.

Potential Solution and/or Comments:

- Rebuild 125 feet of sidewalk on North side of Newton up to alley.
- Construct 125 feet of new sidewalk between alley and Franklin.
- Install 6-foot wide stair up to alley from Newton.
- Reconstruct alley with asphalt from stairs approximately 50 feet north to a width of 14 feet.

Challenges/Tradeoffs:

- Parking at northwest corner of Newton and Franklin would be modified from current 90-degree parking to parallel parking.

Preliminary Range of Cost: \$ 150,000 to \$ 190,000