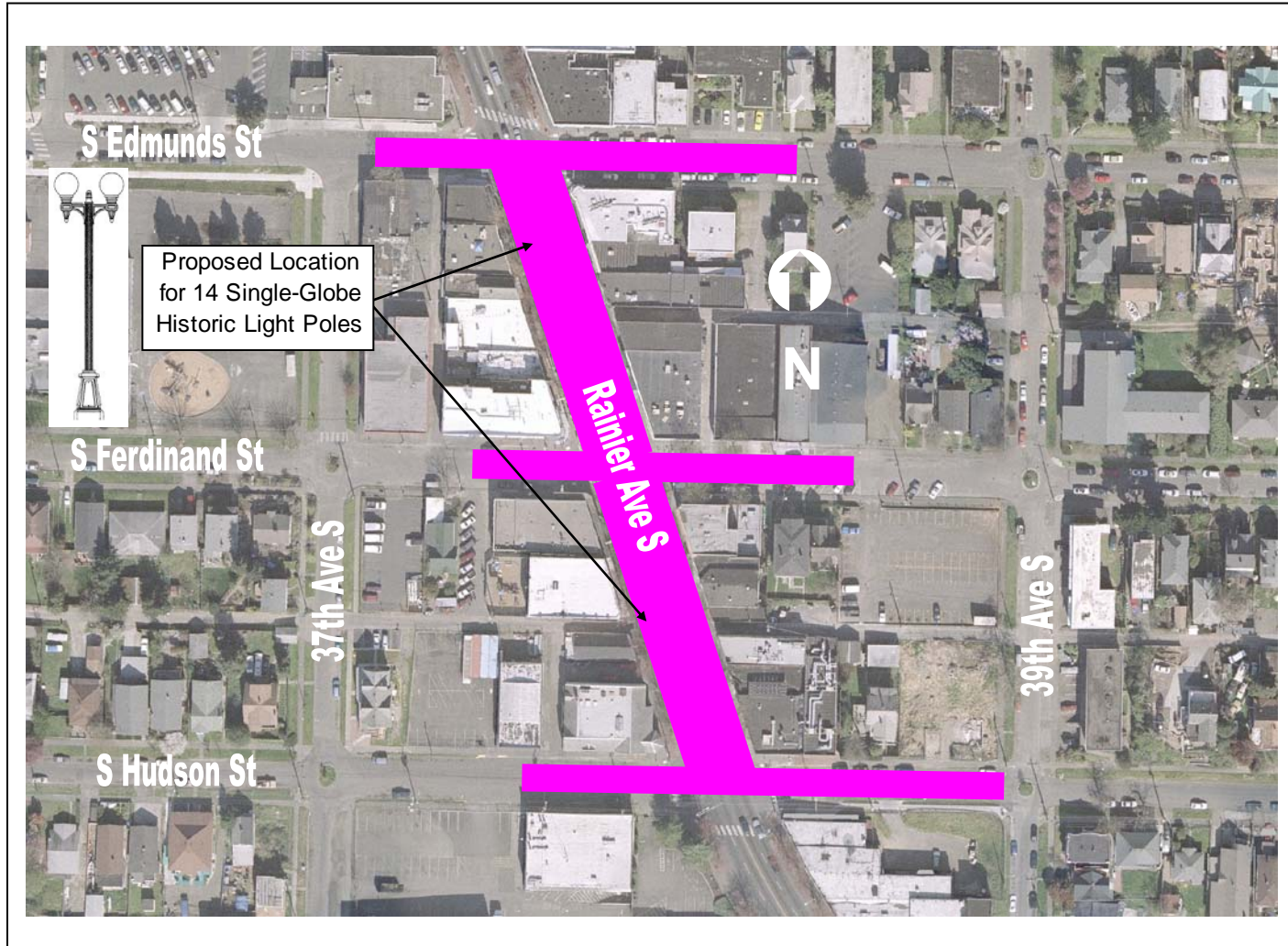


Columbia City Business District - Rainier Avenue South, South Edmunds Street, South Ferdinand Street, and South Hudson Street



Columbia City Business District - Rainier Avenue South, South Edmunds Street, South Ferdinand Street, and South Hudson Street

Project ID # 2007-493

Type of Improvement: Lighting
Neighborhood: Columbia City

Approximate Length: 900 feet
Street Classification: Principal Arterial

Applicant Description of Problem and/or Project:

Problem: The district is economically vulnerable due to the district's dependence on the very busy Rainier Avenue, where almost all commercial buildings are located. It has been a key goal of the Columbia City Business Association to "widen" the district by promoting commercial activity up the commercially-zoned side streets, east and west of Rainier Avenue. The existing historic-style pedestrian lighting is very important in defining the business district and supporting its landmark status. Completing the existing lighting system and extending it about one-half block east and west of Rainier will greatly contribute to the strengthening of the district. In so doing, the project will help solidify the economic vitality of Columbia City, and help it become a strong core of the urban village. The project will serve all people from the surrounding neighborhoods, as well as visitors from throughout the City. The project is responsive to the Columbia City/Hillman City/Genesee Neighborhood Plan.

Suggested Project: Extension of the existing historic-style pedestrian lighting for the purpose of filling in missing locations on Rainier Avenue and extending the lighting about one-half block east and west of Rainier on the side streets of the business district. Procure and install 14 single-globe historic light poles at selected locations. The specific locations have been identified and discussed with City Light engineering staff on December 13, 2006 (contact: Richard Ohashi). City Light estimates the cost of the light poles (exclusive of installation) at \$34,000. Please coordinate final pole locations with the CCBA Business Development Committee.

Potential Solution and/or Comments:

Rainier Avenue South, South Edmunds Street, South Ferdinand Street, and South Hudson Street

- Install 14 single-globe historic light poles throughout the proposed area.

Challenges/Tradeoffs:

- Cost estimate data provided by City Light.
- Specific pole locations would be determined during design.

Preliminary Range of Cost: \$270,000 to \$330,000