



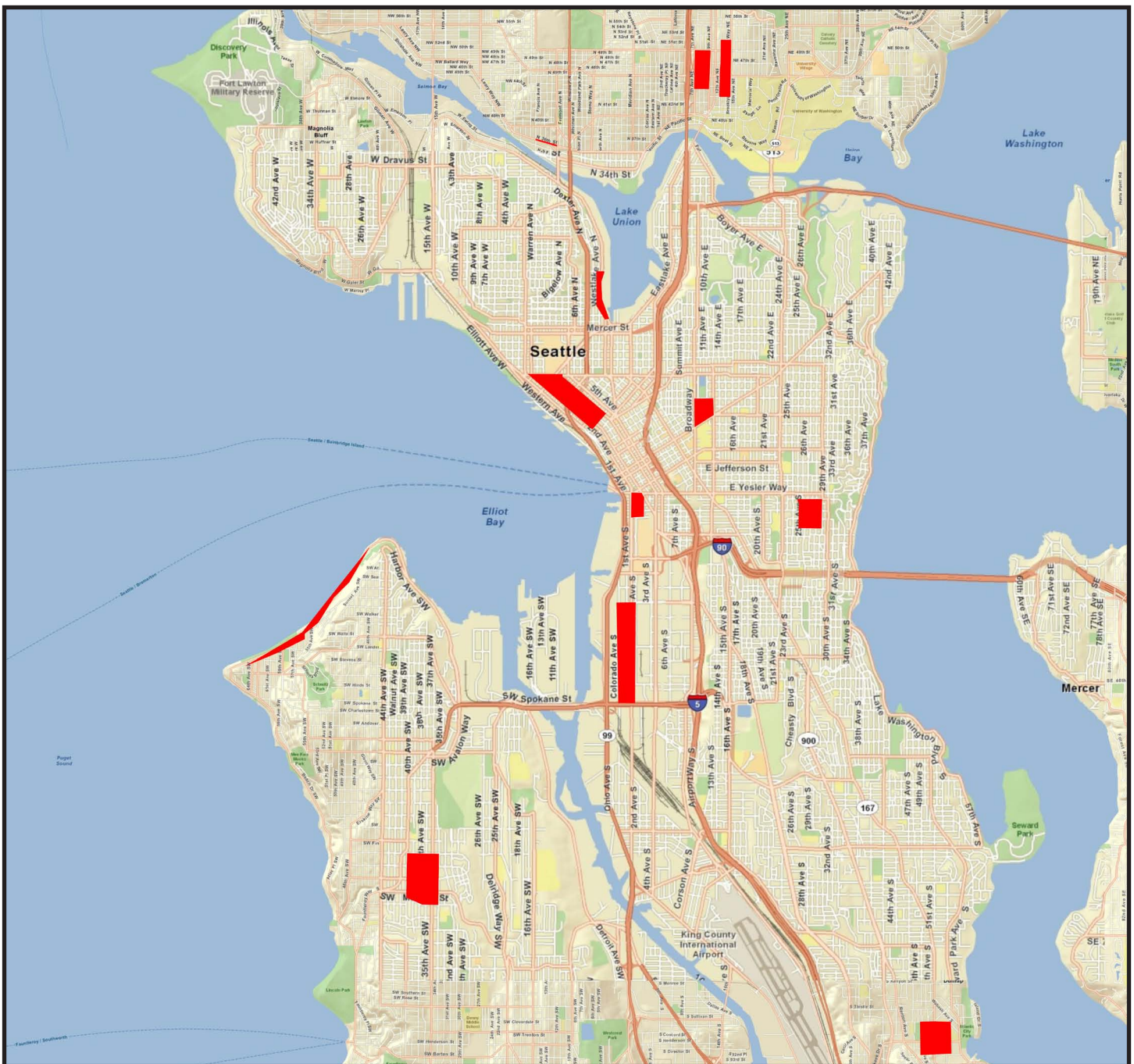
SEATTLE POLICE DEPARTMENT

Citywide Late Night Public Safety Emphasis

www.seattle.gov/police

Designated Night Life Zones

June 10th through September TBD



ABOUT THIS PROJECT:

Use on-duty resources throughout the city to promote uniformed police visibility in areas with high concentrations of people enjoying Friday and Saturday nightlife opportunities. This emphasis will run from this upcoming weekend June 10th until a date in September to be determined.

The Late Night Public Safety Emphasis which launched last summer has been almost universally well received. It is an example of all five precincts working together to field a targeted response to specific public safety concerns that affect a number of our neighborhoods and business districts in every precinct around the city. On any given Friday and Saturday night, residents can expect to see an additional 15 to 25 uniformed officers patrolling the designated nightlife zones.

LOCATION OF EMPHASIS ZONES BY PRECINCTS:

North:

The area of NE. 43rd St. to NE. 47th St. / 7th Ave. NE to Roosevelt Ave. NE (Club Fusion)
The area of NE 42nd St. to NE 52nd St. / 12 Ave, NE to 15th Ave. NE
36th Ave. N from Phinney Ave N to Fremont Ave. N.

West:

Bell Town (same as last year)
Yesler Way to S. King St. / 1st and 2nd Ave S
700 block to 1700 block of Westlake Ave N.

East:

Broadway Ave. E to 12 Ave. E / E. Madison St to E. Pine St.
28th Ave. S. and S. Jackson St. to include one block in each direction

South:

1st Ave. South from S. Spokane St. to S. Holgate St.
Rainier Ave. S. and S. Henderson St. to include one block in each direction

Southwest:

35th Ave. SW. and SW Graham to include one block in each direction
Alki Beach front along Alki Ave. SW
