



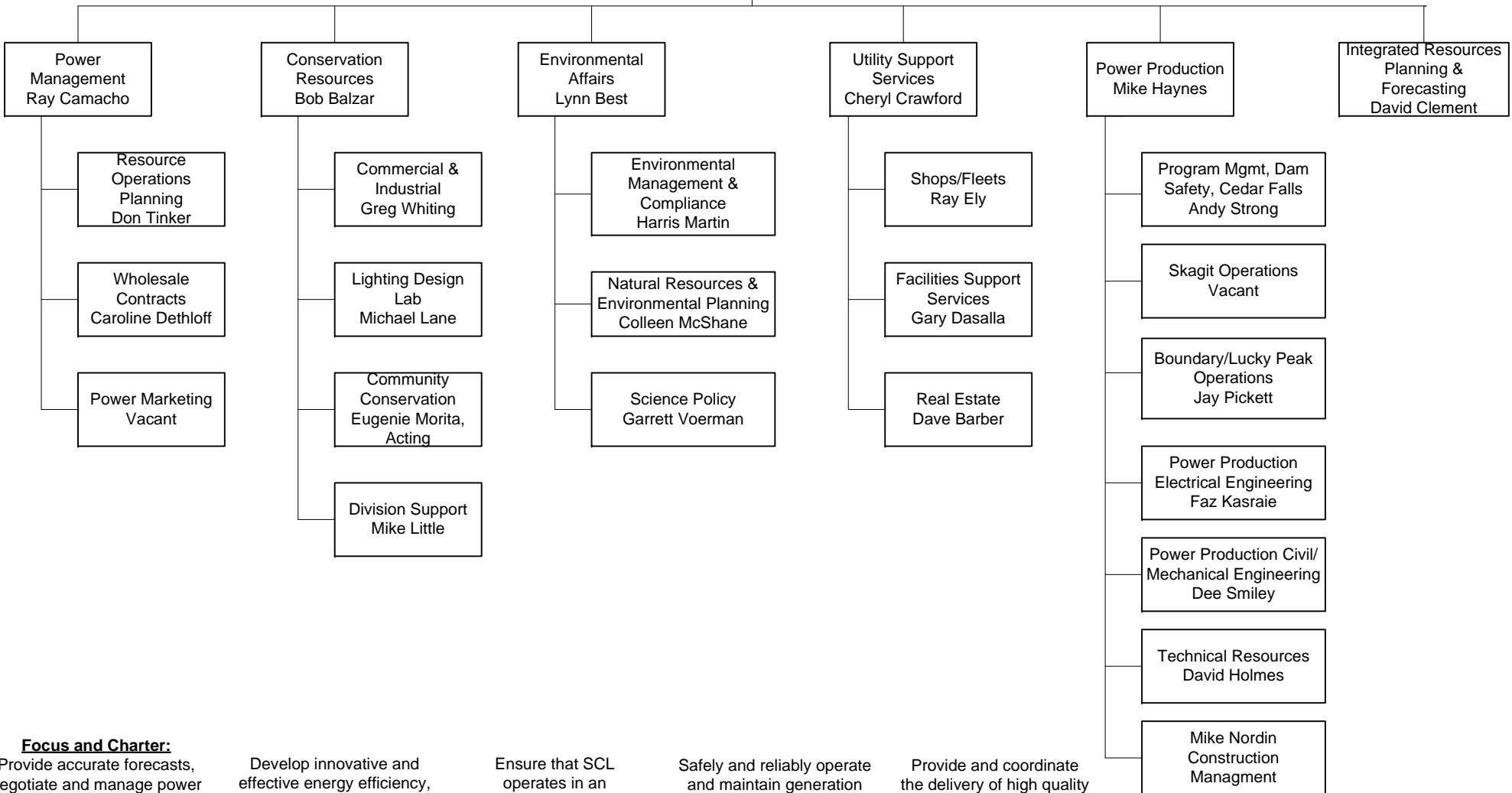
Seattle City Light

www.seattle.gov/light

Power Supply & Environmental Affairs Officer
Steve Kern

Link to Asset Management Oversight Council
Link to Environmental Council

Boundary Relicensing
Barbara Greene



Focus and Charter:

Provide accurate forecasts, negotiate and manage power contracts, optimize existing resource portfolio, and produce high quality IRPs

Develop innovative and effective energy efficiency, demand management, and conservation programs as a part of the overall resource portfolio

Ensure that SCL operates in an environmentally sound manner and continues to be an environmental leader

Safely and reliably operate and maintain generation facilities

Provide and coordinate the delivery of high quality support services

August 11, 2008