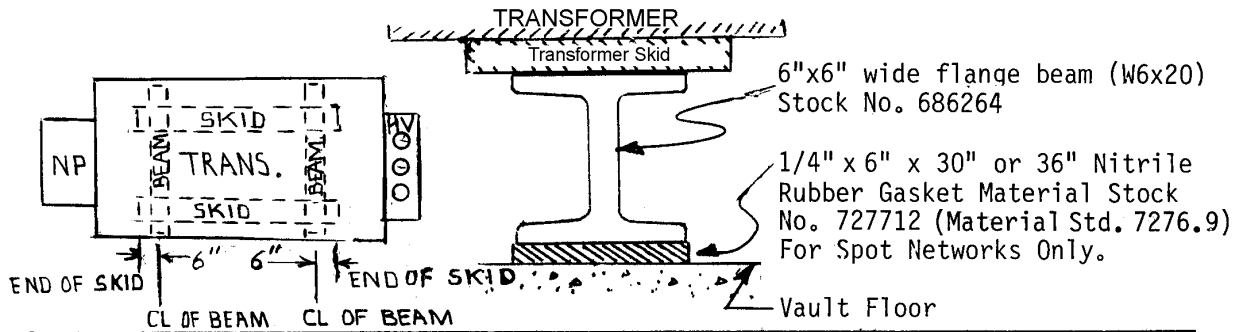
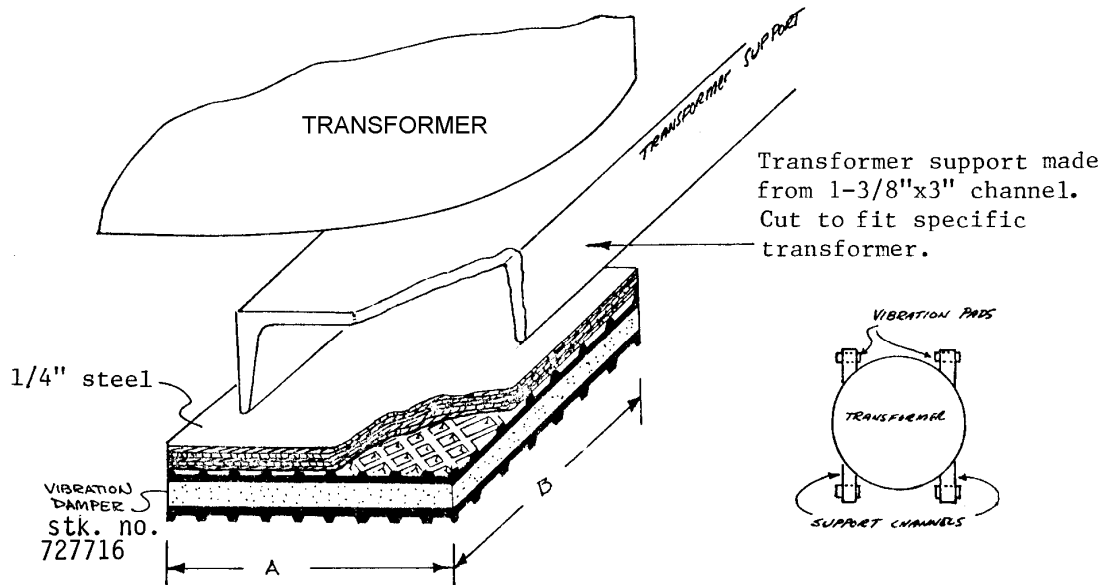


**VIBRATION DAMPERS  
NETWORK TYPE AND SINGLE PHASE TRANSFORMERS**

NETWORK TYPE TRANSFORMERS



SINGLE PHASE TRANSFORMERS



Transformer Weight	Dim. "A"	Dim. "B"
600 to 1000 lbs.	5"	2"
1000 to 1400 lbs.	5"	2-1/2"
1400 to 1800 lbs.	5"	3"
1800 to 2100 lbs.	5"	3-1/2"
2100 to 2400 lbs.	5"	4"

NOTES:

1. Suggested loading 50 to 60 PSI
2. Elasto-Rib Vibration Dampers, maximum loading = 60 PSI.

ORIGINATOR	STANDARDS COORDINATOR	STANDARDS SUPERVISOR	UNIT DIRECTOR
<i>Jim S. Horn</i>	<i>Charles L. Shaffer</i>	<i>John Schinner</i>	<i>Betty Robin</i>