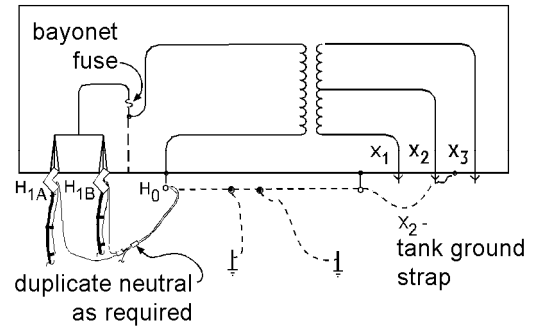
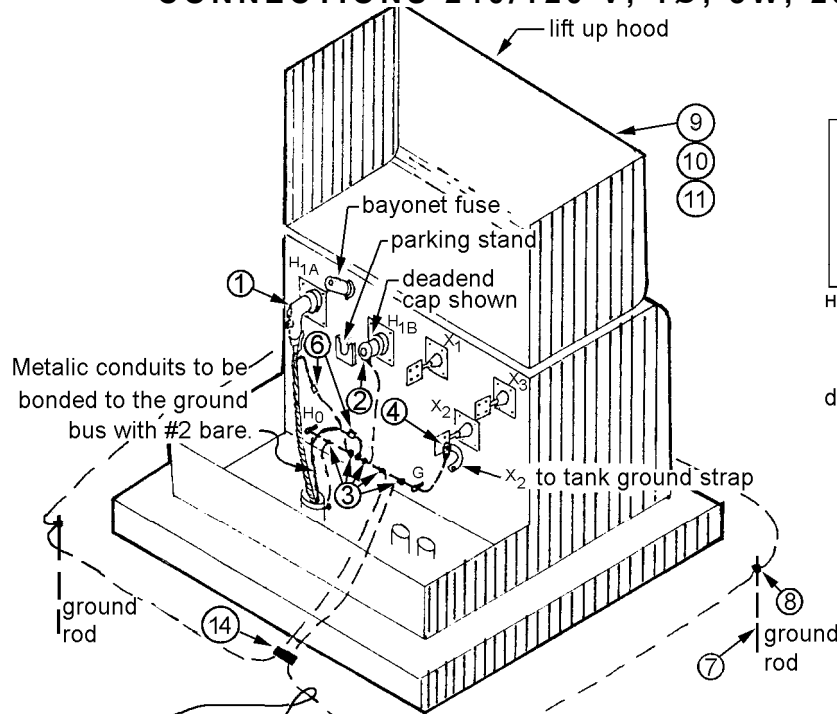


PADMOUNT TRANSFORMER INSTALLATION, GROUNDING AND CONNECTIONS 240/120 V, 1Ø, 3W, 25 THROUGH 167 kVA



Connect neutrals together before connecting to H₀ bushing and make only one connection from the neutrals to the H₀ bushing.

Ground rods shall test to 25 ohms or less.

All grounding and ground bus to be #2 stranded bare soft drawn copper (item 5). Ground bus must form complete rectangle as shown. If grounding is under concrete or asphalt, all connections shall be done by exothermic welding (Cadweld or better).

The pad shall be located so that the closest edge of the pad will be 10' minimum from combustible buildings and all exterior doors and windows, and 3' minimum from non-combustible buildings.

Material List

Item	Quantity	Stock No.	Description	Matl. Std.
12	1	as required	TRANSFORMER, padmount, 1 Ø, kVA size as required	-
1	1 or 2*	686416	ELBOW, deadbreak, 15.2 kV L-G	6864.0
2	0 or 1*	686411	CAP, deadbreak, 15.2 kV L-G	none
3	6	677326E	CONNECTOR, crimpet, #2 to #2	6773.5
4	1	677071E	TERMINAL, compression Lug, #2	6770.7
5	10' or 50' *	610434	WIRE, #2, bare Cu, soft drawn	6103.9
6	1 or 2*	677357E	SPLICE, compression, #2 to #2	6773.8
7	0 or 2*	564238E	ROD, ground, 5/8" x 8', Cu clad	5642.1
8	0 or 2*	564012E	CLAMP, ground rod, 5/8" to #2	5640.3
9	1	765181	SIGN, "Danger High Voltage"	7651.10
11	1	765255E	LABEL, "Call Before You Dig"	none
13	4 to 8	735805E	STRAP, plastic tie, 7"	7358.1
14	1	669379E	TAP, two-bolt parallel, #2 to #2/0	6693.7

* Quantity will vary depending upon: 1) Radial or loop feed, and 2) Previous installation of ground rods and bus.

standards coordinator
Cer

Curtis Lu

standards manager
Goldshield

John Shipek

unit director
Pamela S. Johnson

Pamela S. Johnson