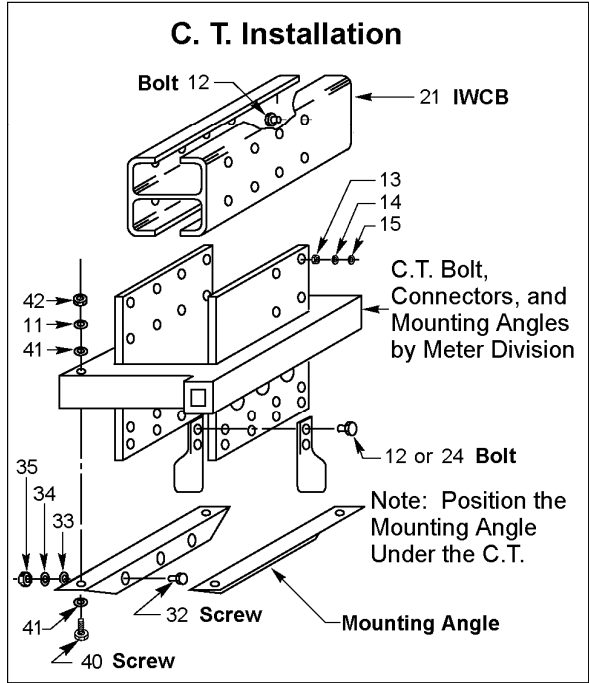
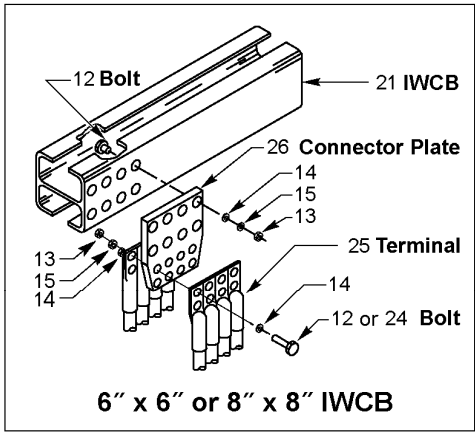
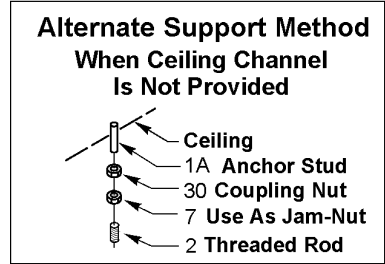
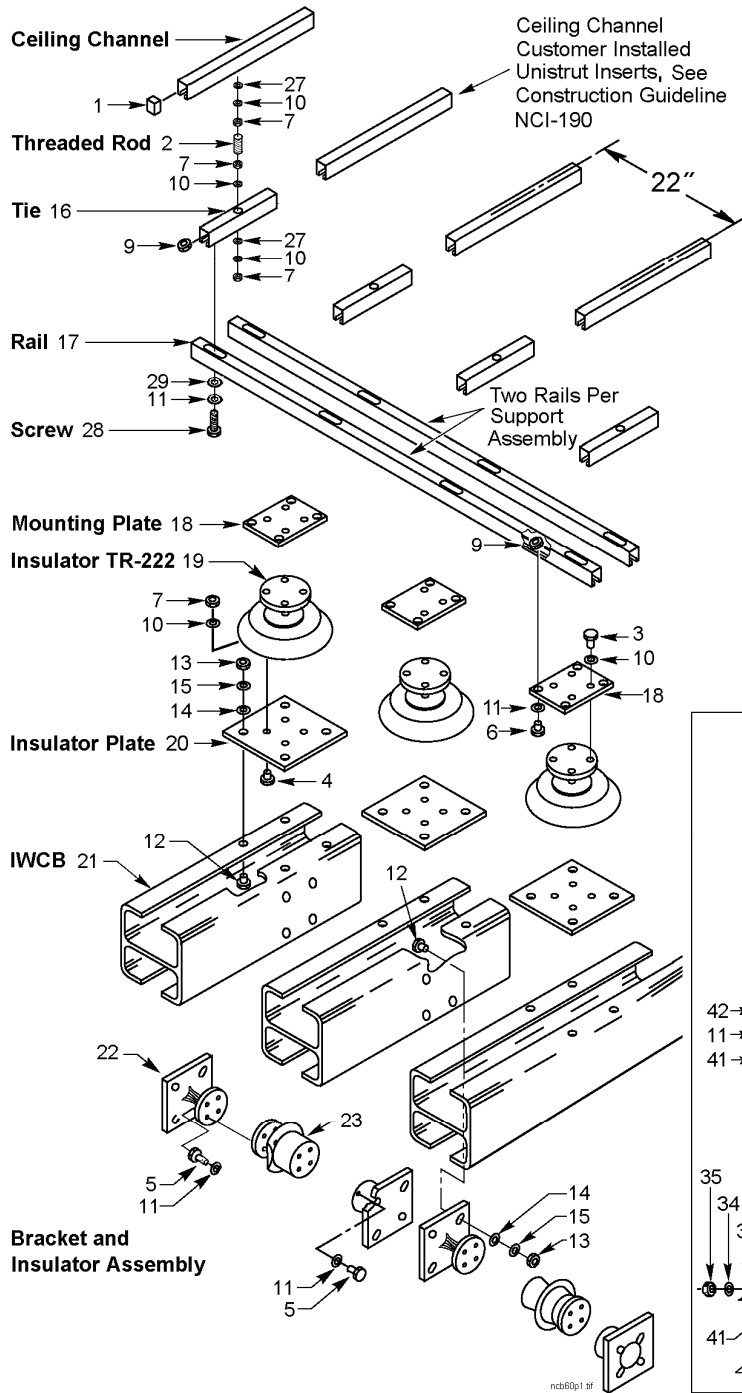


CONSTRUCTION GUIDELINE

IWCB INSTALLATION AND MOUNTING PARTS



standards coordinator	standards manager	unit director
Curtis Lu	John Shipek	Pamela S. Johnson

CONSTRUCTION GUIDELINE**Material List for Set of 3 IWCBS**

Note: Support IWCB no less than every 2'-4" (minimum separation) and no more than every 8' (maximum).

Item	Quantity per Support Assembly	Description	Stock No.
1	4	NUT, spring, strut, long, 5/8"-11	723613
1A	4*	ANCHOR, stud, concrete, "Kwik-Bolt", 5/8"-11 x 4-3/4, stainless steel	780034
2	4	ROD, running thread, 5/8" -11, length as required	781000
3	12	HEX BOLT, zinc coated steel, 5/8"-11 x 1-1/4"	784886E
4	12	SCREW, socket flat head (Allen), 5/8"-11UNC x 1-1/2", stainless steel	784440
5	16	HEX BOLT, zinc coated steel, 1/2"-13UNC x 1-1/4"	784826E
6	12	HEX BOLT, zinc coated steel, 1/2"-13UNC x 1-1/2"	784827E
7	12	HEX NUT, cadmium coated steel, 5/8"-11NC	010162E
9	20	NUT, spring, strut, long, 1/2"-13UNC	723606E
10	12	WASHER, split lock, helical spring, cadmium coated, 5/8"	584260E
11	40	WASHER, split lock, helical spring, cadmium coated, 1/2"	584255E
12▲	28	CAP SCREW, hex head, Al, for 6" IWCB	5/8"-11UNC x 2" 781813
			5/8"-11UNC x 2-1/2" 781815
13	28	HEX NUT, heavy series, Al, 5/8"-11UNC	783560
14	28	WASHER, flat plain, Al, 5/8"	788254
15	28	WASHER, split lock, helical spring, Al, 5/8"	788274
16	4	TIE, anchor to rail	680800
17	2	RAIL, tie to mounting plate	680801
18	3	MOUNTING PLATE, insulator to rail	680802
19	3	INSULATOR, cap and pin, porcelain, TR-222	690280
20	3	INSULATOR PLATE, for 8" IWCB	680874
21	3	BUS, IWCB, Al, 8"	630051
22	4	INSULATOR BRACKET, for 8" IWCB	690862
23	2	POST INSULATOR, porcelain, TR-202	690253
24▲	-	CAP SCREW, hex head, bus bar, Al, 5/8"-11UNC x 3"	781817
25	-	TERMINAL, secondary lug, compression, Al, 750 kcmil	651275♣
26	-	CONNECTOR PLATE, for 6" x 6" & 8" x 8" IWCB to cable	680860
27	8	WASHER, flat plate, square, electrogalvanized steel, 5/8"	788192
28	8	HEX BOLT, zinc coated steel, 1/2"-13UNC x 3"	784833E
29	8	WASHER, flat plate, square, electrogalvanized steel, 1/2"	788190E
30	4*	COUPLING NUT, for 5/8" running thread steel rod	780050E
40	4	HEX BOLT, zinc coated steel, 1/2"-13UNC x 5"	784841
41	8	WASHER, flat, round, zinc coated steel, 1/2"	585025E
42	4	HEX NUT, cadmium coated steel, 1/2"-13UNC	782986E

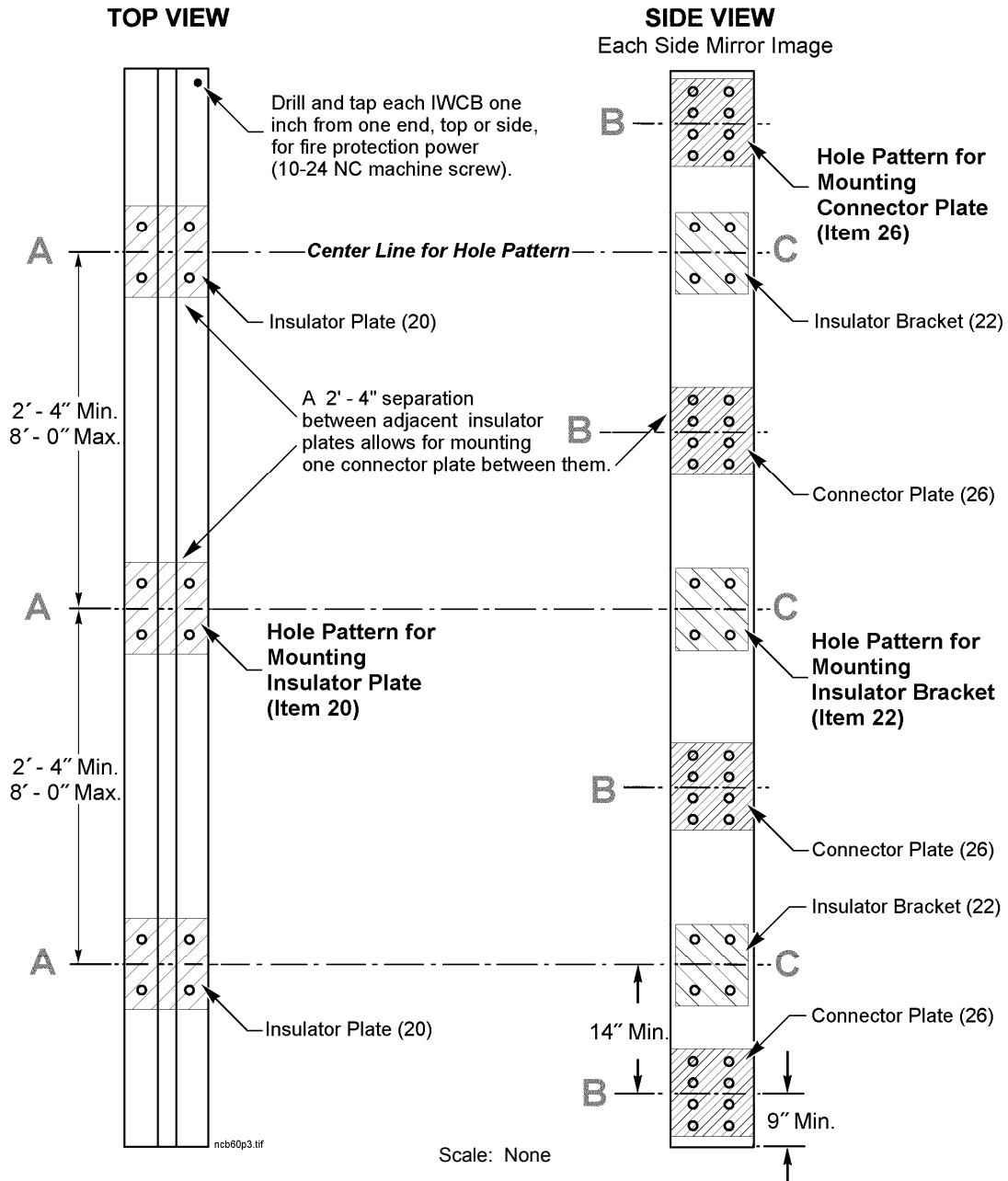
* Items 1A and 30 used only when Unistrut is not supplied by customer.

▲ Use item 12 for one side cable installation; item 24 for back to back cable installation.

♣ For use with Excelloy 750 kcmil Al. Compact conductor (Stock No. 601018).

CONSTRUCTION GUIDELINE

**Typical 8" Wide IWCB
IWCB Required in Sets of Three**



See page 4 for hole pattern details.

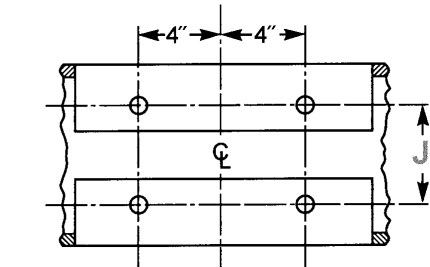
A = hole pattern centerline for mounting insulator plate, **top only** (item 20), separated by 2' 4" minimum, 8' maximum.

B = hole pattern centerline for mounting connector plate (item 26)

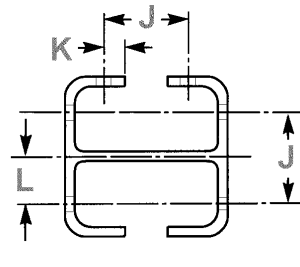
C = hole pattern centerline for mounting insulator bracket, **stiffening side only** (item 22), separated by 2' 4" minimum, 8' maximum.

CONSTRUCTION GUIDELINE

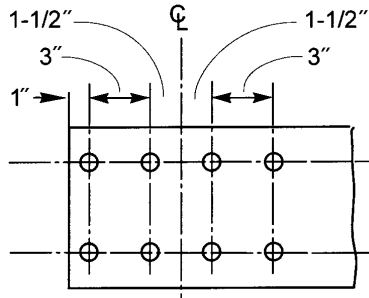
Hole Drilling Details for 6" x 6" and 8" x 8" IWCB, Note: All holes 11/16" diameter



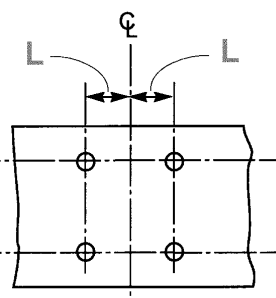
A - Top View
hole pattern for insulator plate (item 20)



End View



B - Side View
hole pattern for connector plate (26)



C - Side View
hole pattern for insulator bracket (item 22)

Web Size

	6 x 6	8 x 8
J	3-1/2	4-1/4
K	3/4	1-1/8
L	1-3/4	2-1/8

dimensions in inches

Material List -- Connector Plate and Cable Installation

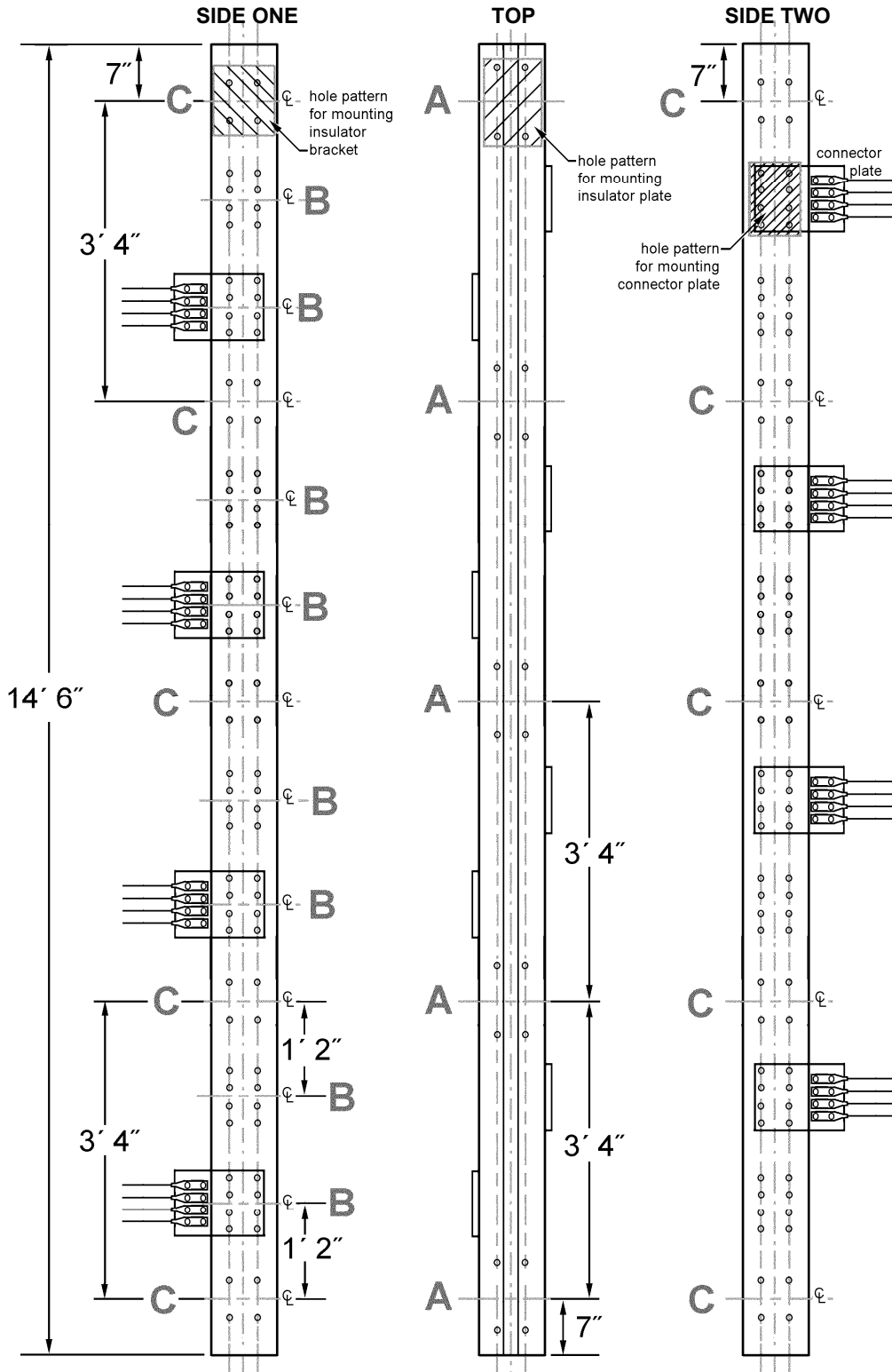
Item	Quantity per Support Assembly	Description	Stock No.
12▲	8/plate, 2/cable	BOLT, bus bar, Al hex head, 5/8"-11UNC x 2" for 6" IWCB 5/8"-11UNC x 2-1/2" for 8" IWCB	781813 781815
13	8/plate, 2/cable	NUT, heavy series, Al hex, 5/8"-11UNC	783560
14	8/plate; 4/cable	WASHER, flat, Al, 5/8"	788254
15	8/plate, 2/cable	WASHER, lock, Al spring, 5/8"	788274
20	3	PLATE, INSULATOR, for 8" IWCB	680874
22	4	BRACKET, INSULATOR, for 8" IWCB	690862
24▲	8/plate, 2/cable	BOLT, bus bar, Al hex head, 5/8"-11UNC x 3"	781817
25	as required	TERMINAL, comp. Al 750 kcmil	651275♣
26	as required	PLATE, CONNECTOR, for 6" x 6" & 8" x 8" IWCB	680860
31	6	PLATE, CONNECTOR, CT, 8" x 8" IWCB	680885
32	6/bracket	HEX BOLT, zinc coated steel, 1/2" x 2"	784829E
33	6/bracket	WASHER, flat, round, zinc coated steel, 1/2"	585025E
34	6/bracket	WASHER, split lock, helical spring, zinc coated steel, 1/2"	584255E
35	6/bracket	HEX NUT, zinc coated steel, 1/2"	783116E

▲ Use item 12 for one side cable installation; item 24 for back to back cable installation.

♣ For use with Excellloy 750 kcmil Al. Compact conductor (Stock No. 601018).

CONSTRUCTION GUIDELINE

**8" Wide by 14' 6" Long IWCB with Offset Plates
Optimized Design for Vaults with Four Transformers**



A = hole pattern centerline for mounting insulator plate, **top only** (item 20), separated by 2' 4" minimum, 8' maximum.

B = hole pattern centerline for mounting connector plate (item 26)

C = hole pattern centerline for mounting insulator bracket, **stiffening side only** (item 22), separated by 2' 4" minimum, 8' maximum.

Scale: None

CONSTRUCTION GUIDELINE

**8" Wide by 12' Long IWCB with Offset Plates
Optimized Design for Vaults with Three Transformers**

