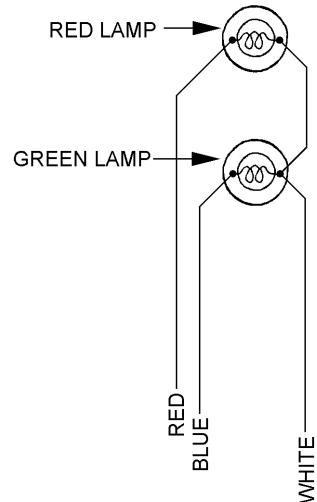
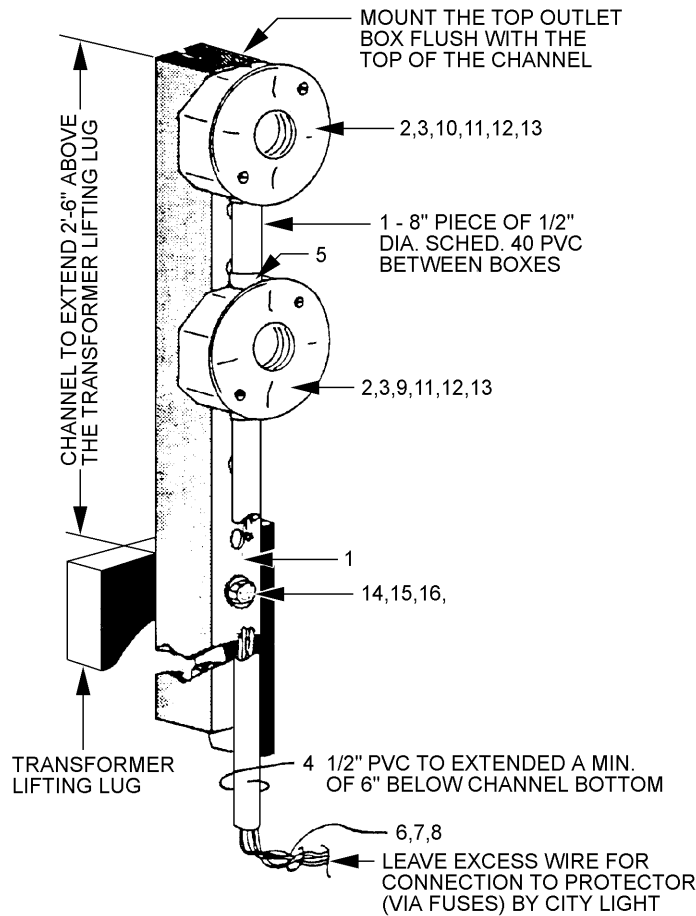


**NETWORK PROTECTOR INDICATOR LIGHTS**



**WIRING DIAGRAM**

1. Bolt assembly to transformer lifting lug on protector end of transformer.
2. Orient indicator lights so that they can be seen from vault access door or hatch.
3. Mount outlet boxes on aluminum channel with two 1/4-20 round head slotted machine screws and nuts and washers.

Standards Coordinator  
Brett Hanson

Standards Supervisor  
John Shipek

Unit Director  
Darnell Cola

**CONSTRUCTION GUIDELINE****NETWORK PROTECTOR INDICATOR LIGHTS**

ITEM	QUANTITY	DESCRIPTION	STOCK NUMBER
1	4 Ft.	CHANNEL, Alum., 12 GA 1-5/8" x 1-5/8" w/ 9/16" Dia. Holes on 1-7/8" Centers	723502
2	2 Ea.	OUTLET BOX, Octagonal, Bakelite	734569
3	2 Ea.	LAMPHOLDER, Plastic, Keyless	733116
4	4 Ft.	CONDUIT, 1/2" PVC, Sched. 40	734525
5	3 Ea.	ADAPTER Coupling, 1/2", Male, PVC, Sched 40	734920
6	12 Ft.	WIRE, 600 V, Copper, #12 Solid, Jacket Color White	612222
7	12 Ft.	" " " " " Red	612224
8	12 Ft.	" " " " " Blue	612225
9	1 Ea.	LAMP, 120 V, 40 W equivalent, Green, Type A19	013678
10	1 Ea.	LAMP, 120 V, 40 W equivalent, Red, Type A19	013677
11	4 Ea.	SCREW, Slotted Round Head, Machine, 1/4-20, 1-1/2" Long	786531
12	4 Ea.	NUT, Reg. Hex., Cadmium Plate, 1/4-20	782982
13	4 Ea.	WASHER, Cut, Cadmium Plate, Steel, 1/4"	788042
14	1 Ea.	SCREW, Cap, Hex., Cadmium Plate, 1/2 – 13, 2-1/2" Long	784831
15	1 Ea.	NUT, Reg. Hex., Cadmium Plate, Steel, 1/2"	782986
16	2 Ea.	WASHER, Cut, Cadmium Plate, Steel, 1/2"	788046