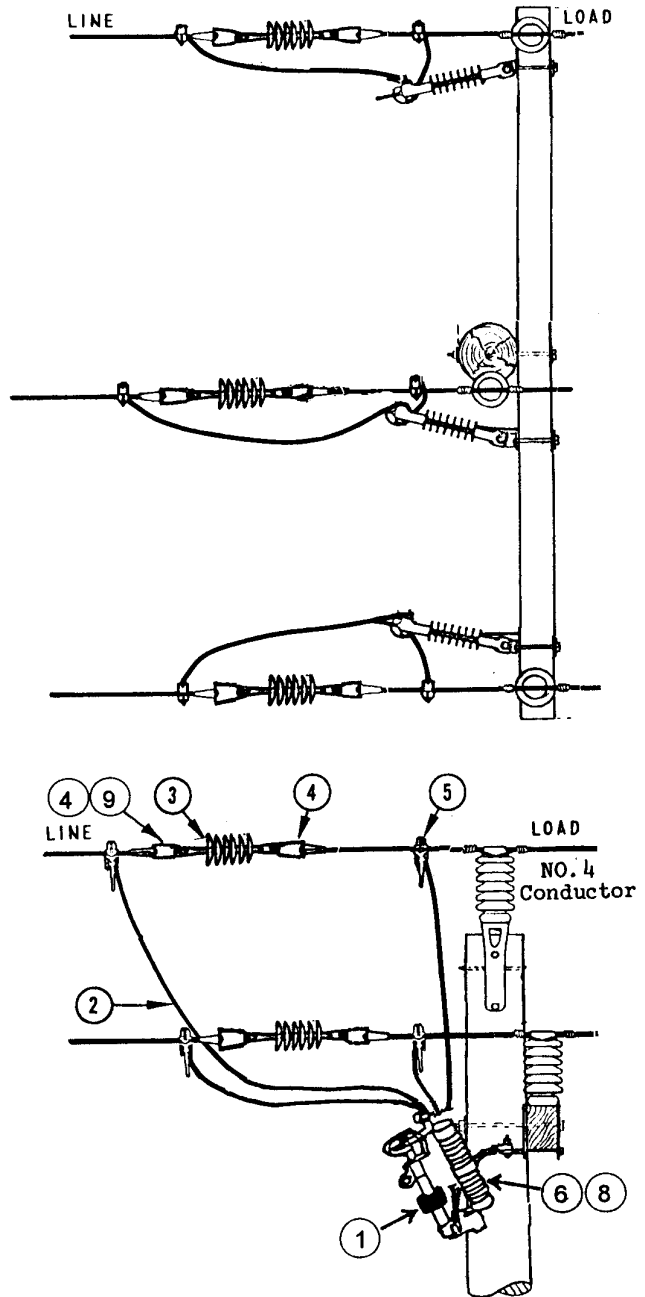


**CONSTRUCTION GUIDELINE**

**26 KV AUTOMATIC LINE  
 SECTIONALIZER  
 3 SINGLE-PHASE ELECTRONIC TYPE  
 UNITS ON A TANGENT POLE**



ITEM	QTY	DESCRIPTION	STOCK NO.
1	3	SECTIONALIZER, electronic	210111
2	20'	WIRE, #4 Cu. poly	611442
3	3	INSULATOR, dead end, composite, 15/26 kV	690233
4	6	DEADEND, automatic, #4	581332 E
5	6	CLAMP, hot line, Cu. 2/0 to #8	580725 E
		Stirrup for Al. 400 to #6	580727
		397.5 to 954	580678
6	3	CUTOUT, 27 kV, polymer	013739
8	3	BRACKET, cutout mounting, crossarm	682097
9	1	LINK, galv.	696195

STANDARDS COORDINATOR

*Yaochiem Chao*  
 Yaochiem Chao

STANDARDS SUPERVISOR

*John Shipek*  
 John Shipek

UNIT DIRECTOR

*Darnell Cola*  
 Darnell Cola