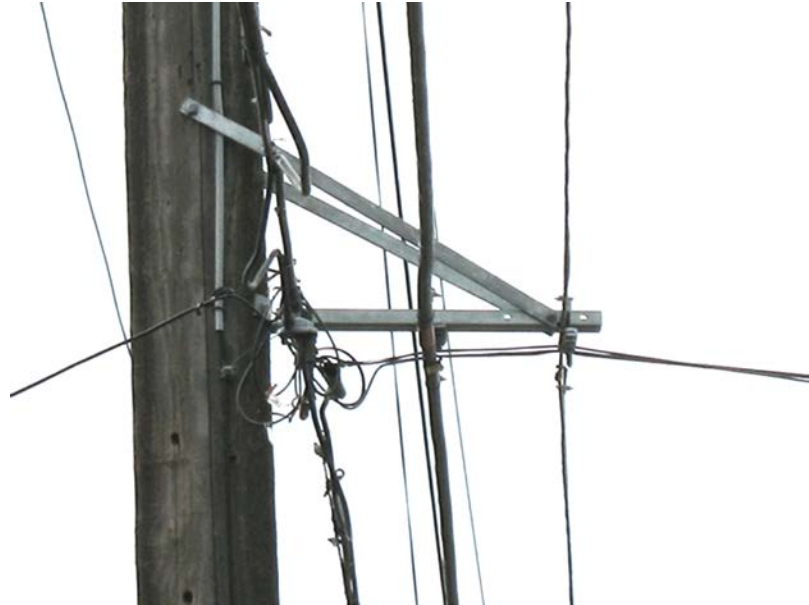


Communications Bracket Installation



1. Scope

This standard covers the requirements for the installation of communications brackets for additional communication lines.

2. Application

This standard instructs SCL crews how to construct and install communications brackets, and clarifies clearance requirements.

3. Construction Notes

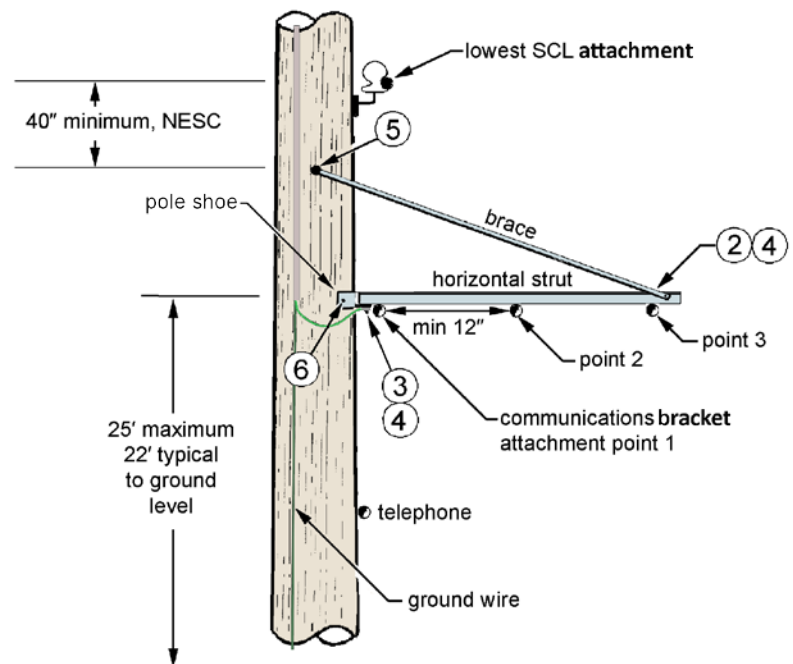
3.1 Bracket Height

The bottom of the bracket must be no higher than 25 feet above ground level. Typical height is 22 feet. Reference clearance requirements in SCL 0093.02.

3.2 Separation

The distance between the tallest point on the bracket braces and the lowest SCL attachment must be a minimum of 40 inches as required by the NESC.

Figure 3.1, Location on Pole



3. Construction Notes, continued

3.3 Grounding

To ground the communications bracket, push ground wire and connector splice (Item 11) inside terminal lug (item 12) one inch and crimp with Nico Press. Attach lug between 1/2-inch bolt (item 3) and nut.

Figure 3.3a, Ground Lug



Figure 3.3b, Nico Press

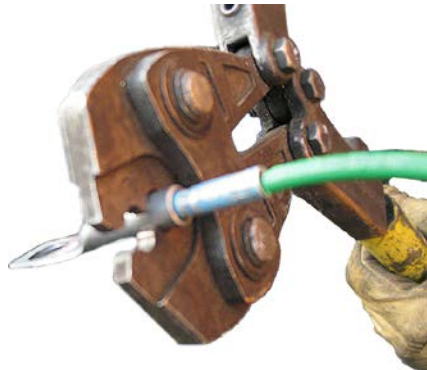


Figure 3.3c, Routing Ground Wire



3.4 Communications Bracket Strut Orientation

Orient the flat side of the horizontal strut down – open side of the U-shape, pointing up. The pole shoe tab and terminal clamp will sit flush against the underside of the horizontal strut.

4. Material List

Item	Quantity	Description	Stock No.
1	1	COMMUNICATIONS BRACKET, includes one horizontal strut channel, two braces, and one pole shoe	010408
2	1	BOLT, machine, galvanized 1/2" x 4-1/2"	780803E
3	1	BOLT, machine, galvanized 1/2" x 1-1/2"	780794E
4	2	WASHER, lock, split, galvanized 1/2"	584255E
5	1	BOLT, length can vary	780847E
6	2	BOLT, lag, 1/2" x 4", fether drive	785261E
7	as required	WIRE, THWN, 600 V copper #8 AWG	612277
8	1	TAP, split bolt, parallel type	668861E
9	as required	MOULDING, plastic	582060E
10	as required	STAPLES, moulding	583200E
11	1	CONNECTOR SPLICE, compression, copper	677354E
12	1	TERMINAL LUG, compression	677071E

5. References

SCL Construction Standard 0093.02; "Utility Pole Attachments"

SCL Material Standard 5631.1; "Bracket, Communications, Cable Attachment"

6. Sources

Brewer, Steve; SCL Crew Chief and subject matter expert for 0093.06 (steve.brewer@seattle.gov)

Byrnes, Devyn; SCL Standards Student Intern; subject matter expert, and co-originator of 0093.06 (devyn.byrnes@seattle.gov)

Lu, Curtis; SCL Standards Engineer; subject matter expert, and co-originator of 0093.06 (curtis.lu@seattle.gov)