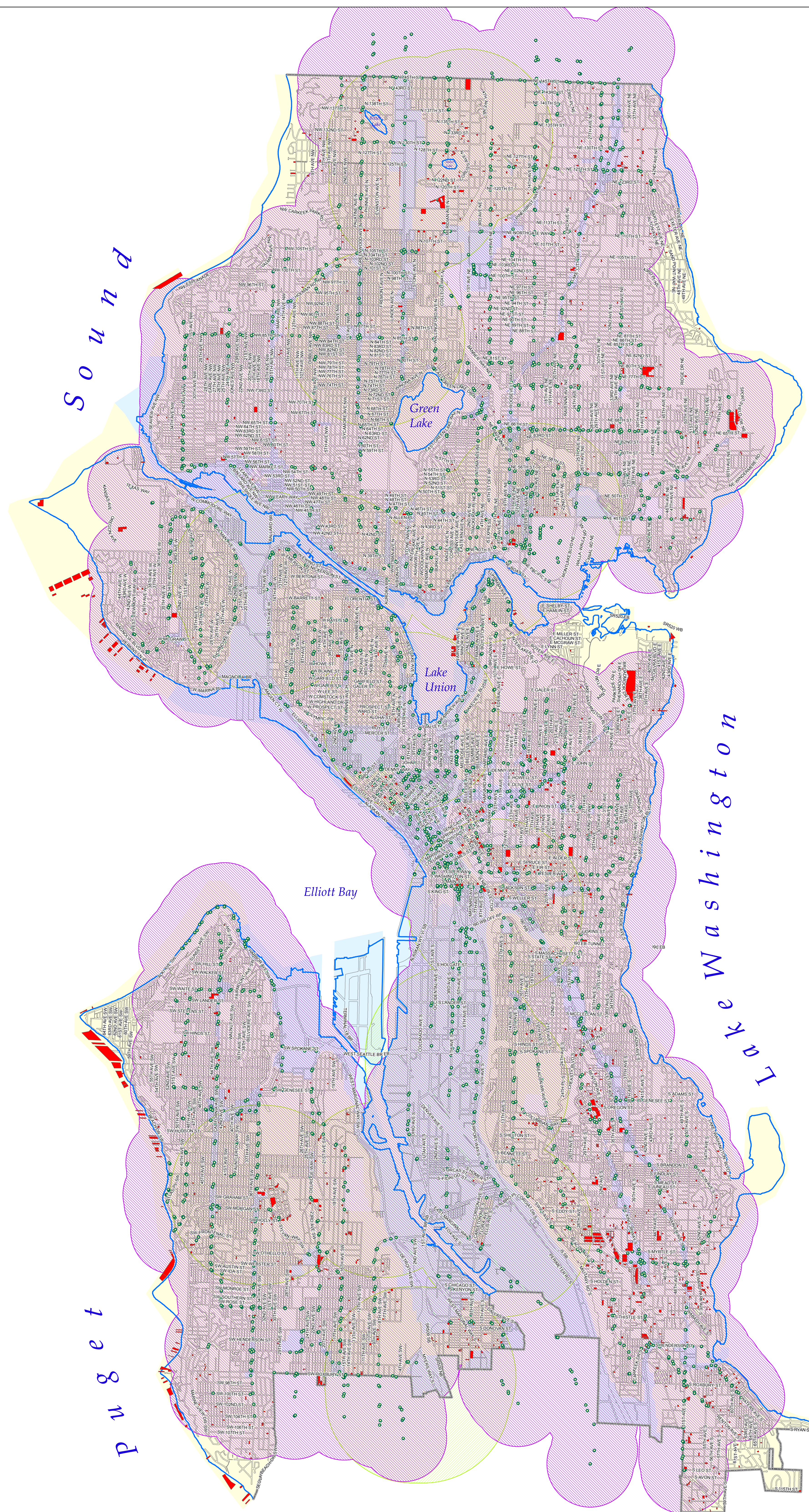


Vacant Residential and NC1 Property



0 0.5 1 2 Miles

No warranties of any sort, including accuracy, fitness, or merchantability accompany this product.

Copyright 2015, All Rights Reserved, City of Seattle
Prepared August 14, 2015 by DPD-GIS

Private and Public Vacant Residential and NC1 Zoned Property: 1,657



- Filters applied:
- Lots less than 5,000 square feet
 - Lots in selected ECAs wetland, knownslope, potential slide, steep slope, riparian corridor, and wildlife habitat.
 - Lots that are submerged or mostly submerged

Eligible zones



- Industrial, NC2, NC3, Commercial (C), Downtown (except DMR, PSM and IDR) and Seattle Mixed Zones

Residential and NC1 zones



- 'LR1', 'LR2', 'LR3', 'MR', 'NC1', 'HR', 'RSL', 'SF 5000', 'SF 7200', 'SF 9600', 'IDR', 'DMR'

Bus Stops



- Bus Stops within half mile of Eligible Zones
One half mile buffer surrounding Bus Stops