



**FINAL RECOMMENDATION OF THE
CENTRAL AREA DESIGN REVIEW BOARD**

Record Number: 3033433-LU

Address: 2009 25th Avenue South

Applicant: Megan McKay, Johnston Architects

Date of Meeting: Thursday, February 06, 2020

Board Members Present: Sharon Khosla, Chair
Kenny Pleasant
Lauren Powers (substitute)
May So (substitute)

Board Members Absent: Azzurra Cox
Dennis Comer
Jeffrey Floor

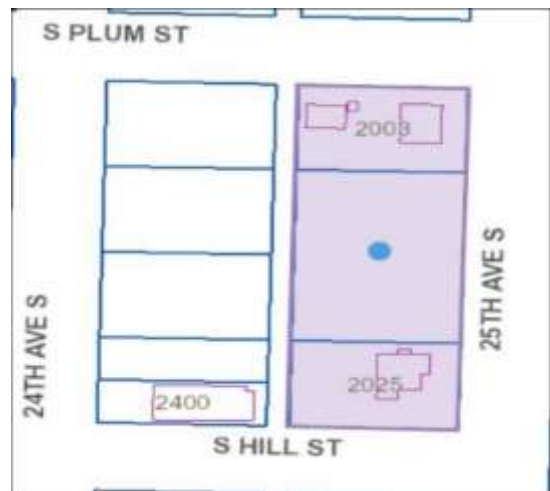
SDCI Staff Present: Lisa Rutzick, Design Review Manager
Greg Johnson, Senior Land Use Planner

SITE & VICINITY

Site Zone: Commercial 1 [C1-75 (M1)]

Nearby Zones: (North) Neighborhood Commercial 3 [NC3-75 (M1)]
(South) NC3-75 (M)
(East) C1-55 (M)
(West) C1-75 (M1)

Lot Area: East: 36,000 SF



Current Development:

The meeting was conducted for two adjacent projects that are divided by an unimproved alley right-of-way and are therefore considered two separate development sites. The west site is (#3034186-LU) is compiled of 4 existing tax parcels and is currently undeveloped. The east site (#3033433-LU) is compiled of 3 existing tax parcels. There are two existing single family residences located at the northeast and southeast corners of the site. The west site contains 3 existing Exceptional Trees; an Austrian Black Pine (24.1-inch), a Dwarf Alberta Spruce (10.2-inch), and a Western Yew (14.7-inch). The two sites slope approximately 33-feet downward from the northeast corner of the east site to the southwest corner of the west site.

Surrounding Development and Neighborhood Character:

The sites are located in the Mt. Baker Hub Urban Village. The sites are located within a commercial zone. The vicinity is developed with a mix a new townhouse construction that is contemporary in design, few existing single family structures, light industrial, and institutional uses and community services including the Lighthouse Center for the Blind, American Red Cross, Treehouse, churches, and the Northwest African American Museum. The majority of these structures are lowrise, approximately 1-3 stories in height.

The Rainier Ave S corridor is located 2 blocks to the west and provides a variety of commercial uses. The sites are served by transit along S Plum St, Rainier Ave S and Martin Luther King Junior Way S. Martin Luther King Junior Memorial Park, Seattle Children's Play Garden, Sam Smith Park and Bradner Gardens Park provide recreational opportunities within a half mile of the sites.

Access:

There is no existing vehicular access connecting the adjacent rights of way to the site. Vehicular access is proposed to occur from the alley. The alley will be improved as part of the scope of this development. Pedestrian access is proposed to occur from each street frontage; 24th Ave S to the west, S Plum St to the north, 25th Ave S to the east, and S Hill St to the south.

Environmentally Critical Areas:

There are two Steep Slope Erosion Hazard Areas located on the west property line of #3034186-LU and the south property line of #3033433-LU. There is a Liquefaction Prone Area located at the southwest corner of #3034186-LU.

PROJECT DESCRIPTION

3033433-LU, 2009 25th Avenue S. (East Site): Land Use application to allow 6, 3-story, townhouse buildings (30 units total) with 2 live-work units. Parking for 31 vehicles proposed. Existing buildings to be demolished. Early Design Guidance Review conducted under 3033432-EG.

The design packet includes information presented at the meeting, and is available online by entering the record number at this website:

<http://www.seattle.gov/DPD/aboutus/news/events/DesignReview/SearchPastReviews/default.aspx>

Any recording of the Board meeting is available in the project file. This meeting report summarizes the meeting and is not a meeting transcript.

The packet is also available to view in the file, by contacting the Public Resource Center at SDCI:

Mailing Public Resource Center
Address: 700 Fifth Ave., Suite 2000
P.O. Box 34019
Seattle, WA 98124-4019

Email: PRC@seattle.gov

EARLY DESIGN GUIDANCE April 18, 2019

PUBLIC COMMENT

The following public comments were offered at this meeting:

- Preferred Option C as the breaks in the mass will allow for natural light, which will improve visibility around the site.
- Concerned about increased traffic and parking impacts in the vicinity.

SDCI Staff also summarized design related comments received in writing prior to the meeting:

- Concerned about the lack of ADA accessibility in units and throughout the site design.
- Would like to see communal indoor and outdoor areas, communal gardens, entryways that encourage resident interaction, and safe play areas for children.
- Noted there are several large evergreen trees on site and no plan to protect them.

One purpose of the design review process is for the Board and City to receive comments from the public that help to identify feedback and concerns about the site and design concept, identify applicable Seattle Design Guidelines and Neighborhood Design Guidelines of highest priority to the site and explore conceptual design, siting alternatives and eventual architectural design. Concerns with off-street parking, traffic and construction impacts are reviewed as part of the environmental review conducted by SDCI and are not part of this review.

All public comments submitted in writing for this project can be viewed using the following link and entering the record numbers: <http://web6.seattle.gov/dpd/edms/>

PRIORITIES & BOARD RECOMMENDATIONS

After visiting the site, considering the analysis of the site and context provided by the proponents, and hearing public comment, the Design Review Board members provided the following siting and design guidance.

1. Massing & Composition

- a. The Board unanimously supported Option C, the applicant's preferred massing options, for each project. The Board, however, provided strong guidance for further development and continued community engagement, as discussed herein. (CS3, DC2, DC3)
- b. The Board was concerned that the boxy architectural language appeared too algorithmic, was relentless, and needed to be broken up. The Board directed further modulation of the facades and roof form as it relates to individual units, differentiation between the various structures onsite, and variation in landscaping and materiality. The Board specifically prioritized Central Area Design Guideline DC2-1-c, Encourage Smaller and Varied Building Forms, with an emphasis on varied rather than small forms. Ultimately, the design should draw people into the site and down the alley. (DC2-1-c, DC4-3)
- c. The Board generally supported the design inspiration images provided on page 15 of the EDG packet, but did not support the façade study. The Board was concerned that the colored doors alone do not appear to be a sincere response to local heritage. The Board noted that the response should be less about surface treatment and more relevant to the neighborhood, such as incorporating stoops and activating the street frontages. (DC4-2, DC4-3)
- d. The Board specifically prioritized citywide Design Guideline DC2-B-1, Façade Composition, and Central Area Design Guidelines DC4-2, Building Materials, and DC4-3, Building Details and Elements. (DC2-B-1, DC4-2, DC4-3)

2. Response to Context & Community

- a. The Board was disappointed by the lack of comments received in response to early public outreach and directed further engagement with local neighborhood organizations. The Board noted that this near full block site is located at the southern gateway to the Central Area, on the way to the Northwest African American Museum, and therefore should reflect a local and culturally relevant design influence. The Board specifically prioritized Central Area Design Guideline CS3-1, Neighborhood Context. (CS3-1, A.1-1)
- b. The Board noted that the Central Area is an Arts and Culture Hub and recommended engaging a local artist early in the design process. The Board encouraged the interspersing of art throughout the site, including the mosaic art pieces, as described on page 14 of the EDG packet, or other sculptural pieces. (PL1-2-c, A.1-1-b)
- c. The Board directed the applicant to study incorporating live/work uses at the corners of the site or adjacent to the courtyard spaces to spill-out and activate the public realm. The Board noted that the growth of residential development and existing community services would benefit from additional social infrastructure. The Board specifically prioritized Central Area Design Guideline PL3-1-f, Live/Work Spaces. (PL3-1-f)
- d. The Board encouraged providing housing for a variety of incomes and noted that the mix townhouse sizes should be evenly dispersed throughout the site. (A.1-1-e)

3. Pedestrian Circulation & Open Space

- a. The Board discussed the importance of placemaking at the site. The Board directed the applicant to conduct a thorough study of how the landscape and open space plan works as a complete system, creates a network of places within and around the site, and

activates the street frontages. The Board specifically prioritized Central Area Design Guidelines PL1-1, Accessible Open Space; PL1-2, Connection Back to the Community; and DC3-1, Common Open Space. (PL1-1, PL1-2, DC4-D-4)

- b. The Board noted that there is heavy east-west pedestrian traffic in the vicinity and would like the public to feel like they can move through the site. The Board recommended maintaining a porous site and did not support the inclusion of gates at pedestrian access points. (PL1-1-a, PL2, DC3-1-a)
- c. The Board recommended incorporating pockets of pedestrian amenities around the perimeter of the site to promote social interaction, engage the street frontages, and activate the site. The Board noted that the treatment of S Plum St. and the northeast corner is particularly important due to heavy pedestrian volumes and proximity to the Light House Center for the Blind. The Board specifically prioritized Central Area Design Guideline PL3-2-e, Activate the Planter Zone. (PL3-2-e)
- d. In agreement with public comment, the Board was concerned about the lack of safe play spaces for children onsite and specifically prioritized Central Area Design Guideline PL1-3, Livability for Families and Elderly. The Board encouraged the applicant to consider exchanging parking spaces or units for additional open space onsite. Ultimately, the design should incorporate a greater amount of useable common open space at grade. (PL1-3, DC3-B, DC3-1)
- e. The Board strongly recommended shared stoops, rather than private individual stoops, as it promotes interaction between neighbors. The Board specifically prioritized Central Area Design Guidelines PL3-1-g, Couple Entries; PL3-1-h, Exterior Access at Ground Level; and PL3-2-l, Porches and Stoops. (PL3-1-g, PL3-1-h, PL3-2-l)
- f. The Board did not support the abundance of private roof decks as they fail to promote social interaction and encouraged eliminating and/or combining roof decks into shared spaces. The Board specifically prioritized Central Area Design Guideline PL1-2-d, Common and Accessible Open Spaces, which states, *“Ensure exclusive rooftop, private, or gated open spaces are not the only form of open space provided for the project.”* (PL1-2-d)
- g. The Board acknowledged the accessibility challenge created by site topography. In response to public comment, the Board directed increasing site accessibility at the northern half of the site and common courtyard spaces. (PL2-A)

2. Landscape & Exceptional Trees

- a. The Board noted that elements of water and bioretention should be used to provide variation and visual interest along the alley. (CS1-E-1)
- b. The Board supported the retention of the Austrian Black Pine Exceptional Tree. (CS1-D-1, DC4-D-4)
- c. The Board supported the removal of the Western Yew Exceptional Tree and the relocation of the Dwarf Alberta Spruce Exceptional Tree for the design-based rationale provided on page 26 of the EDG packet. The Board noted that the relocation of the Dwarf Alberta Spruce contributed well to the site design. (PL1-A-1, DC3-1, CS1-B, CS3-C-3)

DEVELOPMENT STANDARD DEPARTURES

At the time of the Early Design Guidance meeting, no departures were requested.

PUBLIC COMMENT

The following public comments were offered at this meeting:

- Supported the way the buildings engage the street and fit into the sloping topography.
- Supported the introduction of live/work buildings along South Plum Street.
- Supported the variation in the building facades with application of materials.
- Supported the incorporation of required powerline setbacks into the design without obviously being powerline setbacks.
- Supported saving the existing tree.
- Supported placing building frontage on all four sides of the block.
- Supported varied landscaping.
- Preferred for greater stoop setback from street frontages.
- Concerned with ambiguous definition of public versus private spaces within the site.
- Concerned by the relentless material application that could use additional variety of materials and colors.
- Supported the design of the community spaces related to the patrons of The Lighthouse for the Blind, specifically in the incorporation of sculpture and braille into artwork and the intent for fragrant gardens to encourage the use of non-visual senses.
- Supported possible retail uses in the proposed live/work buildings that can be in proximity to The Lighthouse for the Blind.

SDCI staff also summarized design related comments received in writing prior to the meeting:

- Noted the only open spaces were for vehicle circulation; none were suitable for community interaction or children.
- Stated the south and west facing parts of the block would be ideal for a P-Patch, garden, or communal space.
- Questioned if any of the units would be fully ADA accessible.

One purpose of the design review process is for the Board and City to receive comments from the public that help to identify feedback and concerns about the site and design concept, identify applicable Seattle Design Guidelines and Neighborhood Design Guidelines of highest priority to the site and explore conceptual design, siting alternatives and eventual architectural design.

All public comments submitted in writing for this project can be viewed using the following link and entering the record number-LU: <http://web6.seattle.gov/dpd/edms/>

PRIORITIES & BOARD RECOMMENDATIONS

After visiting the site, considering the analysis of the site and context provided by the proponents, and hearing public comment, the Design Review Board members provided the following recommendations.

1. Street Frontage

- a. The Board noted the improved relationship of the porches and entries to the street frontage since the EDG meeting. (*Central Area* PL3-1-g. Couple Entries, *Central Area* PL3-1-h. Exterior Access at Ground Level, *Central Area* PL3-2-l. Porches and Stoops)
- b. The Board supported the proposed variation of unit types as an appropriate response to EDG guidance to provide a varied street frontage and façade modulation (*Central Area* DC2-1-c. Encourage Smaller and Varied Building Forms, *Central Area* DC4-3. Building Details and Elements).
- c. The Board supported the proposed integration of landscape and hardscape along the street frontages with a variety of street trees and the alignment of special landscaping and hardscaping aligned with site entrances and courtyards (*Central Area* PL3-2-e. Activate the Planter Zone).
- d. The Board strongly encouraged the applicant to provide additional activation along the S. Hill Street frontage on the south side of the site, and offered the following suggestions for accomplishing this. The Board declined to recommend this as a condition. (*Central Area* DC3-1-c. Common Open Spaces, DC3-C-1. Reinforce Existing Open Space):
 - i. Reorientation of units 43 and 44 to face S. Hill Street (*Central Area* PL3-2. Streetscape Treatment).
 - ii. Widening the stair connection to the S. Hill Street frontage to the west of units 43 and 44 and enlarging the landing at the bottom of the stairway (PL1-A-2. Adding to Public Life).
 - iii. Establishing a stronger visual and/or physical connection between the street frontage and gathering space to the west of units 43 and 44 (*Central Area* PL3-2. Streetscape Treatment).
 - iv. Placing seating along the south exterior wall of unit 44 that faces S. Hill Street (PL2-A-2. Access Challenges, PL3-B-4. Interaction).
 - v. Using a side entry with landing on the south side of unit 44 instead of a back entry that faces the interior courtyard (*Central Area* PL3-2. Streetscape Treatment).
 - vi. Detailing of foundation material to add texture along the street frontage (DC4-A-1. Exterior Finish Materials).
- e. Noting the similar appearance of the of the residential and live/work units, the Board recommended strengthening the commercial appearance of the live/work units to provide visual differentiation from the residential units. The Board recommended the following changes to achieve this differentiation, but declined to recommend a condition. (PL3-1-a. Storefront Variation, DC4-A-1. Exterior Finish Materials):
 - i. Removal of the wood material from the ground level in favor of a material that is slightly differentiated from the upper level metal panel. The Board

suggested utilizing the wood as a soffit material (*Central Area* PL3-1. Frontages).

- ii. Application of storefront windows at the ground level instead of vinyl windows. The Board supported the use of full-height windows at the ground-level (PL1-B-3. Pedestrian Amenities, DC4-A-1. Exterior Finish Materials).

2. Interior Courtyards:

- a. The Board identified the shifts in landscape planter height along the interior courtyard as a successful method for reducing the scale of the interior space (*Central Area* DC3-1 Common Open Spaces).
- b. The Board suggested the applicant propose landscaping around the sunken entry patios along the interior courtyard to provide both sufficient privacy and sufficient light to the patio spaces (CS1-B-2. Daylight and Shading, *Central Area* PL3-2. Streetscape Treatment, PL3-A-d. Individual Entries).
- c. For the same sunken patios, the Board recommended maintaining a minimum width of 5-6 feet to allow for furniture and circulation (DC3-B-1. Meeting User Needs)

3. Building Details:

- a. The Board supported the proposed façade design as a successful response to EDG guidance (*Central Area* DC2-1-c. Smaller and Varied Building Forms, *Central Area* DC4-3. Building Details and Elements).
- b. The Board identified the stepping of side gable forms visible in renderings on packet page 12 as an appropriate method for allowing the site topography to inform the building design (CS2-B-1. Site Characteristics, *Central Area* DC2-1. Building Layout and Massing).
- c. The Board expressed concern over the roof transitions, especially the transitions between flat and gable roofs, and encouraged the applicant to develop a consistent language to deal with awkward transition elements such as hand rails and triangular portions of exterior walls. The Board declined to recommend this as a condition. (DC2-B-1. Façade Composition).
- d. The Board identified the lack of through-wall building vents on the façade elevation drawings, and encouraged the alignment of exterior vents to ensure consistency with the design concept (guidelines), but did not recommend a condition.
- e. Citing public comment recommending greater variation in exterior color and materiality throughout the project to simulate the variety of building materials and colors present in the surrounding neighborhood, the Board recommended, but did not condition, employing techniques such as minor shifts in wood stain colors or entry/porch colors to add visual individuality among the proposed buildings (*Central Area* CS3-1. Neighborhood Context, *Central Area* PL3-1. Frontages).
- f. The Board suggested revising the gutter system at the ground level of the Live/Work units to reduce the length of horizontal laterals along the ground level weather protection (PL2-C-2. Design Integration).

4. Parking Area:

- a. The Board encouraged the applicant to reduce the visual expanse of the parking area through the visual differentiation between the alley right-of-way and the

parking spaces or a similar form of visual transition that is integrated into the overall design. The Board declined to recommend this as a condition. (DC4-D-2. Hardscape Materials).

- 5. Exceptional Trees** – The Board did not expand upon their earlier comments provided at the EDG meeting supporting the removal, relocation, and retention of exceptional trees on-site.

DEVELOPMENT STANDARD DEPARTURES

The Board’s recommendation on the requested departure(s) will be based on the departure’s potential to help the project better meet these design guidelines priorities and achieve a better overall project design than could be achieved without the departure(s). The Board’s recommendation will be reserved until the final Board meeting.

At the time of the **FINAL** Recommendation meeting the following departures were requested:

- 1. Floor Height/Setback (SMC 23.47A.008.D.2):** The Code requires the floor of a dwelling unit located along the street-level to have a minimum height of 4 feet above or 4 feet below sidewalk grade or have a minimum 10 foot setback from the sidewalk. The applicant requested departures for floor heights between 6 inches and 4 feet above grade and setbacks from sidewalk between 4 feet and 10 feet.

The Board unanimously approved the departure in all proposed instances, stating that the departure allows increased width of interior courtyards, which addresses guidelines related to open space (*Central Area* DC3-1. Common Open Spaces, DC3 Open Spaces). The Board also noted that the proposed heights of porches needing departures are generally more consistent with the recommended residential stoop height of 30 inches within the Central Area Design Guidelines (PL3-2-k). The Board stated that the proposed landscaping also helps to integrate the porches within the street frontage.

DESIGN REVIEW GUIDELINES

The Seattle Design Guidelines and Neighborhood Design Guidelines recognized by the Board as Priority Guidelines are identified above. All guidelines remain applicable and are summarized below. For the full text please visit the [Design Review website](#).

CONTEXT & SITE

CS1 Natural Systems and Site Features: Use natural systems/features of the site and its surroundings as a starting point for project design.

CS1-A Energy Use

CS1-A-1. Energy Choices: At the earliest phase of project development, examine how energy choices may influence building form, siting, and orientation, and factor in the findings when making siting and design decisions.

CS1-B Sunlight and Natural Ventilation

CS1-B-1. Sun and Wind: Take advantage of solar exposure and natural ventilation. Use local wind patterns and solar gain to reduce the need for mechanical ventilation and heating where possible.

CS1-B-2. Daylight and Shading: Maximize daylight for interior and exterior spaces and minimize shading on adjacent sites through the placement and/or design of structures on site.

CS1-B-3. Managing Solar Gain: Manage direct sunlight falling on south and west facing facades through shading devices and existing or newly planted trees.

CS1-C Topography

CS1-C-1. Land Form: Use natural topography and desirable landforms to inform project design.

CS1-C-2. Elevation Changes: Use the existing site topography when locating structures and open spaces on the site.

CS1-D Plants and Habitat

CS1-D-1. On-Site Features: Incorporate on-site natural habitats and landscape elements into project design and connect those features to existing networks of open spaces and natural habitats wherever possible. Consider relocating significant trees and vegetation if retention is not feasible.

CS1-D-2. Off-Site Features: Provide opportunities through design to connect to off-site habitats such as riparian corridors or existing urban forest corridors. Promote continuous habitat, where possible, and increase interconnected corridors of urban forest and habitat where possible.

CS1-E Water

CS1-E-1. Natural Water Features: If the site includes any natural water features, consider ways to incorporate them into project design, where feasible.

CS1-E-2. Adding Interest with Project Drainage: Use project drainage systems as opportunities to add interest to the site through water-related design elements.

Central Area Supplemental Guidance:

CS1-1 Local Topography

CS1-1-a. Respond to Local Topography: Respond to local topography with terraces, stoops, stepping facades, or similar approaches. Use appropriately scaled rockeries, stairs, and landscaping to transition between the sidewalk, building façade, and entrances in keeping with local topographic conditions, and existing neighboring approaches.

CS1-1-b. Step Fencing and Screening: If fencing or screening is included in the design, it should step along with the topography.

CS1-2 Connection to Nature

CS1-2-a. Impact on Solar Access: Be sensitive to the project's impact on solar access to adjacent streets, sidewalks, and buildings. Where possible, consider setting taller buildings back at their upper floors, or pushing buildings back from the street and providing wider sidewalks so sunlight can reach pedestrian level spaces and neighboring properties. Ensure sunlight reaches building entrances whenever possible.

CS1-2-b. Provide Vegetation: Provide vegetated spaces throughout the project. Vertical green walls are encouraged in addition to landscape beds.

CS1-2-c. Gardens and Farming Opportunities: Incorporate edible gardens and urban farming opportunities within the design, both at grade, and on the roof for larger buildings.

CS1-2-d. Unify with Landscaping: Unify streets through street trees and landscaping.

- a. Consider tree species as a unifying feature to provide identifiable character to a street or project.
- b. Incorporate an irrigation plan for the trees and other landscaping proposed to ensure maintainability of the plants, or include low-maintenance, drought-resistant species.

CS1-2-e. Protect Sidewalks: Create protected sidewalks by utilizing planter strips with lush landscaping, to help create a "room" between the street and the building.

CS2 Urban Pattern and Form: Strengthen the most desirable forms, characteristics, and patterns of the streets, block faces, and open spaces in the surrounding area.

CS2-A Location in the City and Neighborhood

CS2-A-1. Sense of Place: Emphasize attributes that give a distinctive sense of place. Design the building and open spaces to enhance areas where a strong identity already exists, and create a sense of place where the physical context is less established.

CS2-A-2. Architectural Presence: Evaluate the degree of visibility or architectural presence that is appropriate or desired given the context, and design accordingly.

CS2-B Adjacent Sites, Streets, and Open Spaces

CS2-B-1. Site Characteristics: Allow characteristics of sites to inform the design, especially where the street grid and topography create unusually shaped lots that can add distinction to the building massing.

CS2-B-2. Connection to the Street: Identify opportunities for the project to make a strong connection to the street and public realm.

CS2-B-3. Character of Open Space: Contribute to the character and proportion of surrounding open spaces.

CS2-C Relationship to the Block

CS2-C-1. Corner Sites: Corner sites can serve as gateways or focal points; both require careful detailing at the first three floors due to their high visibility from two or more streets and long distances.

CS2-C-2. Mid-Block Sites: Look to the uses and scales of adjacent buildings for clues about how to design a mid-block building. Continue a strong street-edge and respond to datum lines of adjacent buildings at the first three floors.

CS2-C-3. Full Block Sites: Break up long facades of full-block buildings to avoid a monolithic presence. Provide detail and human scale at street-level, and include repeating elements to add variety and rhythm to the façade and overall building design.

CS2-D Height, Bulk, and Scale

CS2-D-1. Existing Development and Zoning: Review the height, bulk, and scale of neighboring buildings as well as the scale of development anticipated by zoning for the area to determine an appropriate complement and/or transition.

CS2-D-2. Existing Site Features: Use changes in topography, site shape, and vegetation or structures to help make a successful fit with adjacent properties.

CS2-D-3. Zone Transitions: For projects located at the edge of different zones, provide an appropriate transition or complement to the adjacent zone(s). Projects should create a step in perceived height, bulk and scale between the anticipated development potential of the adjacent zone and the proposed development.

CS2-D-4. Massing Choices: Strive for a successful transition between zones where a project abuts a less intense zone.

CS2-D-5. Respect for Adjacent Sites: Respect adjacent properties with design and site planning to minimize disrupting the privacy of residents in adjacent buildings.

Central Area Supplemental Guidance:

CS2-1 Transition and Delineation of Zones

CS2-1-a. Provide Privacy Layering and Scale: Where denser zones transition to lower density residential zones, provide privacy layering and scale for ground related entrances, porches, and stoops on façades facing the less dense residential zone.

CS2-1-b. Transition using Massing and Articulation: In addition to building height, use building massing and articulation to transition to single-family scaled fabric. Other acceptable methods include setbacks, building footprint size and placement on the site, building width, façade modulation, and roof line articulation.

CS2-1-c. Relate to Human Scale: The use of appropriately scaled residential elements, such as bay windows and balconies, on larger buildings next to single-family zones are encouraged to better relate to the human scale. This is especially important for buildings four stories and lower.

CS2-1-d. Reduce Building Mass Using Passageways: Along with smaller building massing, the use of breezeways, portals, and through-block connections help to lessen the mass of the overall building, and add to the existing network of pedestrian pathways.

CS3 Architectural Context and Character: Contribute to the architectural character of the neighborhood.

CS3-A Emphasizing Positive Neighborhood Attributes

CS3-A-1. Fitting Old and New Together: Create compatibility between new projects, and existing architectural context, including historic and modern designs, through building articulation, scale and proportion, roof forms, detailing, fenestration, and/or the use of complementary materials.

CS3-A-2. Contemporary Design: Explore how contemporary designs can contribute to the development of attractive new forms and architectural styles; as expressed through use of new materials or other means.

CS3-A-3. Established Neighborhoods: In existing neighborhoods with a well-defined architectural character, site and design new structures to complement or be compatible with the architectural style and siting patterns of neighborhood buildings.

CS3-A-4. Evolving Neighborhoods: In neighborhoods where architectural character is evolving or otherwise in transition, explore ways for new development to establish a positive and desirable context for others to build upon in the future.

CS3-B Local History and Culture

CS3-B-1. Placemaking: Explore the history of the site and neighborhood as a potential placemaking opportunity. Look for historical and cultural significance, using neighborhood groups and archives as resources.

CS3-B-2. Historical/Cultural References: Reuse existing structures on the site where feasible as a means of incorporating historical or cultural elements into the new project.

Central Area Supplemental Guidance:

CS3-1 Neighborhood Context

CS3-1-a. Retain Neighborhood Character: Retain and encourage the extension of existing positive attributes of the surrounding neighborhood character.

CS3-1-b. Continue Existing Neighborhood Fabric: Where appropriate, encourage the preservation, rehabilitation, adaptive reuse, and/or addition to existing structures as a way to continue the existing neighborhood fabric.

CS3-1-c. Include High Ceilings at Ground Level: Include high ceilings in ground floor spaces of new structures consistent with older character structures in the vicinity. Floor to ceiling heights of at least 15 feet with clerestory windows are encouraged for commercial ground floors.

PUBLIC LIFE

PL1 Connectivity: Complement and contribute to the network of open spaces around the site and the connections among them.

PL1-A Network of Open Spaces

PL1-A-1. Enhancing Open Space: Design the building and open spaces to positively contribute to a broader network of open spaces throughout the neighborhood.

PL1-A-2. Adding to Public Life: Seek opportunities to foster human interaction through an increase in the size and quality of project-related open space available for public life.

PL1-B Walkways and Connections

PL1-B-1. Pedestrian Infrastructure: Connect on-site pedestrian walkways with existing public and private pedestrian infrastructure, thereby supporting pedestrian connections within and outside the project.

PL1-B-2. Pedestrian Volumes: Provide ample space for pedestrian flow and circulation, particularly in areas where there is already heavy pedestrian traffic or where the project is expected to add or attract pedestrians to the area.

PL1-B-3. Pedestrian Amenities: Opportunities for creating lively, pedestrian oriented open spaces to enliven the area and attract interest and interaction with the site and building should be considered.

PL1-C Outdoor Uses and Activities

PL1-C-1. Selecting Activity Areas: Concentrate activity areas in places with sunny exposure, views across spaces, and in direct line with pedestrian routes.

PL1-C-2. Informal Community Uses: In addition to places for walking and sitting, consider including space for informal community use such as performances, farmer’s markets, kiosks and community bulletin boards, cafes, or street vending.

PL1-C-3. Year-Round Activity: Where possible, include features in open spaces for activities beyond daylight hours and throughout the seasons of the year, especially in neighborhood centers where active open space will contribute vibrancy, economic health, and public safety.

Central Area Supplemental Guidance:

PL1-1 Accessible Open Space

PL1-1-a. Safety & Connectivity: Provide safe and well connected open spaces. Utilize walkways and linkages to visually and physically connect pedestrian paths with neighboring projects, shared space and public spaces such as streets. Use linkages to create and contribute to an active and well-connected open space network.

PL1-1-b. Neighborhood Nodes & Business Corridors: Larger projects around important neighborhood nodes should create generous recessed entries, corner plazas, and more usable open space adjoining the streets. Projects along dense business corridors should maintain a continuous street wall definition contributing to the area’s urban feel.

PL1-1-c. Transparent Indoor Community Spaces: Incorporate transparent and open indoor community meeting spaces at the ground level of larger projects. Avoid having any window coverings or window film that permanently obscure views into or out of the space.

PL1-2 Connection Back to the Community

PL1-2-a. Multi-Purpose Gathering Spaces: Provide cultural and place-specific open spaces that can be used for a variety of uses including social gathering, festivals, and other larger celebrations.

PL1-2-b. Weather Protection: When providing open gathering spaces for the community, include weather protection to ensure the space can remain active all year long.

PL1-2-c. Lighting, Art and Special Features: Enhance gathering places with lighting, art and features, so that the scale of the art and special features are commensurate with the scale of the new development.

PL1-2-d. Common & Accessible Open Spaces: Ensure exclusive rooftop, private, or gated open spaces are not the only form of open space provided for the project. Prioritize common, accessible, ground level open space at the building street fronts and/or with courtyards that are not restricted or hidden from street views.

PL1-2-e. Hardscapes: Not all open spaces need to be landscaped; hardscapes are encouraged when sized and designed to encourage active usage. At these locations, building edges should be inviting while creating well defined open spaces for common use. These spaces are especially important close to prominent intersections, streets, and Cultural Placemaker locations. In areas where it is not feasible to be open to physical pedestrian access, visual openness should be provided.

PL1-2-f. Rooftop Vegetation: When providing vegetation at the roof level, consider urban agriculture instead of a passive green roof to provide residents access to fresh produce.

PL1-3 Livability for Families and Elderly

PL1-3-a. Safe Play Areas: Provide safe areas for children to play where they can be seen. Incorporate seating areas nearby for parents, guardians, and other community members to congregate.

PL1-3-b. Rooftop Gathering Spaces: Consider utilizing building rooftops as an opportunity for family gathering and gardening.

PL1-3-c. Preserve Alleys for Access and Use: Where applicable, preserve alleys for pedestrian access and service use. Provide adequate lighting, transparency and entrances to ensure active usage.

PL1-3-d. Multi-Generational Gathering Spaces: Provide multi-generational community gathering spaces for young and old to recreate and converse together.

PL2 Walkability: Create a safe and comfortable walking environment that is easy to navigate and well-connected to existing pedestrian walkways and features.

PL2-A Accessibility

PL2-A-1. Access for All: Provide access for people of all abilities in a manner that is fully integrated into the project design. Design entries and other primary access points such that all visitors can be greeted and welcomed through the front door.

PL2-A-2. Access Challenges: Add features to assist pedestrians in navigating sloped sites, long blocks, or other challenges.

PL2-B Safety and Security

PL2-B-1. Eyes on the Street: Create a safe environment by providing lines of sight and encouraging natural surveillance.

PL2-B-2. Lighting for Safety: Provide lighting at sufficient lumen intensities and scales, including pathway illumination, pedestrian and entry lighting, and/or security lights.

PL2-B-3. Street-Level Transparency: Ensure transparency of street-level uses (for uses such as nonresidential uses or residential lobbies), where appropriate, by keeping views open into spaces behind walls or plantings, at corners, or along narrow passageways.

PL2-C Weather Protection

PL2-C-1. Locations and Coverage: Overhead weather protection is encouraged and should be located at or near uses that generate pedestrian activity such as entries, retail uses, and transit stops.

PL2-C-2. Design Integration: Integrate weather protection, gutters and downspouts into the design of the structure as a whole, and ensure that it also relates well to neighboring buildings in design, coverage, or other features.

PL2-C-3. People-Friendly Spaces: Create an artful and people-friendly space beneath building.

PL2-D Wayfinding

PL2-D-1. Design as Wayfinding: Use design features as a means of wayfinding wherever possible.

PL3 Street-Level Interaction: Encourage human interaction and activity at the street-level with clear connections to building entries and edges.

PL3-A Entries

PL3-A-1. Design Objectives: Design primary entries to be obvious, identifiable, and distinctive with clear lines of sight and lobbies visually connected to the street.

PL3-A-2. Common Entries: Multi-story residential buildings need to provide privacy and security for residents but also be welcoming and identifiable to visitors.

PL3-A-3. Individual Entries: Ground-related housing should be scaled and detailed appropriately to provide for a more intimate type of entry.

PL3-A-4. Ensemble of Elements: Design the entry as a collection of coordinated elements including the door(s), overhead features, ground surface, landscaping, lighting, and other features.

PL3-B Residential Edges

PL3-B-1. Security and Privacy: Provide security and privacy for residential buildings through the use of a buffer or semi-private space between the development and the street or neighboring buildings.

PL3-B-2. Ground-Level Residential: Privacy and security issues are particularly important in buildings with ground-level housing, both at entries and where windows are located overlooking the street.

PL3-B-3. Buildings with Live/Work Uses: Maintain active and transparent facades in the design of live/work residences. Design the first floor so it can be adapted to other commercial use as needed in the future.

PL3-B-4. Interaction: Provide opportunities for interaction among residents and neighbors.

PL3-C Retail Edges

PL3-C-1. Porous Edge: Engage passersby with opportunities to interact visually with the building interior using glazing and transparency. Create multiple entries where possible and make a physical and visual connection between people on the sidewalk and retail activities in the building.

PL3-C-2. Visibility: Maximize visibility into the building interior and merchandise displays. Consider fully operational glazed wall-sized doors that can be completely opened to the street, increased height in lobbies, and/or special lighting for displays.

PL3-C-3. Ancillary Activities: Allow space for activities such as sidewalk vending, seating, and restaurant dining to occur. Consider setting structures back from the street or incorporating space in the project design into which retail uses can extend.

Central Area Supplemental Guidance:

PL3-1 Frontages

PL3-1-a. Design Elements: Encourage color, material, and signage variation in storefront design.

PL3-1-b. Emulate Pedestrian-Oriented Context: Design ground floor frontages in commercial and mixed-use areas that emulate or improve upon the surrounding pedestrian-oriented context, while acknowledging the pedestrian patterns that exist.

PL3-1-c. Promote Transparency: Promote transparency and “eyes on the street.” No reflective or obscure glass should be used. Discourage retailers from putting display cases or window film up against windows to maintain transparency into commercial spaces.

PL3-1-d. Step Storefronts Along the Grade: Avoid grade separations at retail. Storefronts should step along with the grade (ex: 30’ max length of any floor level on a sloping frontage) with a focus on accessibility.

PL3-1-e. Frequent Entrances and Expressed Breaks: In pedestrian-oriented commercial areas, provide frequent entrances and expressed breaks along storefronts through columns or pilasters at regular intervals of 25 to 30 feet, to accommodate and encourage smaller retailers and community-oriented businesses.

PL3-1-f. Live/Work Spaces: Live/work spaces should be designed to activate street frontage, maintain transparent windows, and arrange the interior to place work space at the street windows.

PL3-1-g. Couple Entries: At residential projects, provide coupled entries where possible to foster a sense of community and visual interest in building entryways. Provide generous porches at these entries to encourage sitting and watching the street.

PL3-1-h. Exterior Access at Ground Level: Provide exterior access to ground floor residential units. This interior/exterior connection should occur frequently with entrances placed at a regular interval.

PL3-2 Streetscape Treatment

PL3-2-a. Emphasize Building Relationship to the Street: Emphasize the relationship between buildings and their entrances to the street, pedestrians, and neighboring buildings both adjacent and across the street. Provide special treatment through paving or building materials to highlight each business’s presence along the street.

PL3-2-b. Recessed Business Entries: Provide recessed business entries to encourage a slower pedestrian pace where people have sheltered space to stop and gather.

PL3-2-c. Overhead Weather Protection: To protect pedestrians along the sidewalk, provide awnings or overhead weather protection at all non-residential frontages, neighborhood nodes, and on west-facing facades with a minimum depth of 6’. Larger commercial projects should have deeper coverage, with a minimum depth of 8’ at all street frontages, especially street corners.

PL3-2-d. Pedestrian Environment: Encourage a quality pedestrian environment that provides safe, comfortable routes for pedestrians that reflect the existing character of the building fabric.

PL3-2-e. Activate the Planter Zone: Encourage activation of the planter zone to include community gardens, as well as street trees and pedestrian furniture (with SDOT concurrence).

PL3-2-f. Limit Solid Barriers and Blank Walls: Limit the placement of solid barriers or blank walls next to the sidewalk. Consider using landscape buffers instead.

PL3-2-g. Voluntary Spaces: Provide voluntary space abutting the sidewalk right-of-way for businesses to utilize (ex: cafes, produce markets, street markets, fish vendors, buskers, pop-up shops, etc.).

PL3-2-h. Complete Streets: Encourage a safe, comfortable environment for pedestrians with components of complete streets (ex: wide planter zones, wide sidewalks, and/or building setbacks to allow for usable porches, stoops, and outdoor seating).

PL3-2-i. Porches and Stoops: Porches and stoops are the life of the street. Encourage human activity by providing opportunities for neighbors to connect, walk, and talk together on the sidewalk.

PL3-2-j. Buffer Private Outdoor Spaces: To facilitate usable stoops and patios, and to encourage pedestrian-to-resident interaction, buffer private outdoor spaces from the public sidewalk with low walls, planters and landscape layering that defines the private space yet allows for face to face conversations. Tall 'privacy walls' or fences are not acceptable.

PL3-2-k. Raise Private Stoeps Above Sidewalk Grade: If floor levels and site grading allows, the private stoop at residential units should be raised above sidewalk grade, using 30" as an average height, with universal access to the unit included elsewhere.

PL3-2-l. Discourage Recessed Residential Patios: Residential patio levels recessed more than 18" below the adjacent sidewalk grades are discouraged and should be used discerningly, as they can hinder interaction, and may create safety and maintenance issues.

PL4 Active Transportation: Incorporate design features that facilitate active forms of transportation such as walking, bicycling, and use of transit.

PL4-A Entry Locations and Relationships

PL4-A-1. Serving all Modes of Travel: Provide safe and convenient access points for all modes of travel.

PL4-A-2. Connections to All Modes: Site the primary entry in a location that logically relates to building uses and clearly connects all major points of access.

PL4-B Planning Ahead for Bicyclists

PL4-B-1. Early Planning: Consider existing and future bicycle traffic to and through the site early in the process so that access and connections are integrated into the project along with other modes of travel.

PL4-B-2. Bike Facilities: Facilities such as bike racks and storage, bike share stations, shower facilities and lockers for bicyclists should be located to maximize convenience, security, and safety.

PL4-B-3. Bike Connections: Facilitate connections to bicycle trails and infrastructure around and beyond the project.

PL4-C Planning Ahead For Transit

PL4-C-1. Influence on Project Design: Identify how a transit stop (planned or built) adjacent to or near the site may influence project design, provide opportunities for placemaking.

PL4-C-2. On-site Transit Stops: If a transit stop is located onsite, design project-related pedestrian improvements and amenities so that they complement any amenities provided for transit riders.

PL4-C-3. Transit Connections: Where no transit stops are on or adjacent to the site, identify where the nearest transit stops and pedestrian routes are and include design features and connections within the project design as appropriate.

DESIGN CONCEPT

DC1 Project Uses and Activities: Optimize the arrangement of uses and activities on site.

DC1-A Arrangement of Interior Uses

DC1-A-1. Visibility: Locate uses and services frequently used by the public in visible or prominent areas, such as at entries or along the street front.

DC1-A-2. Gathering Places: Maximize the use of any interior or exterior gathering spaces.

DC1-A-3. Flexibility: Build in flexibility so the building can adapt over time to evolving needs, such as the ability to change residential space to commercial space as needed.

DC1-A-4. Views and Connections: Locate interior uses and activities to take advantage of views and physical connections to exterior spaces and uses.

DC1-B Vehicular Access and Circulation

DC1-B-1. Access Location and Design: Choose locations for vehicular access, service uses, and delivery areas that minimize conflict between vehicles and non-motorists wherever possible. Emphasize use of the sidewalk for pedestrians, and create safe and attractive conditions for pedestrians, bicyclists, and drivers.

DC1-B-2. Facilities for Alternative Transportation: Locate facilities for alternative transportation in prominent locations that are convenient and readily accessible to expected users.

DC1-C Parking and Service Uses

DC1-C-1. Below-Grade Parking: Locate parking below grade wherever possible. Where a surface parking lot is the only alternative, locate the parking in rear or side yards, or on lower or less visible portions of the site.

DC1-C-2. Visual Impacts: Reduce the visual impacts of parking lots, parking structures, entrances, and related signs and equipment as much as possible.

DC1-C-3. Multiple Uses: Design parking areas to serve multiple uses such as children's play space, outdoor gathering areas, sports courts, woonerf, or common space in multifamily projects.

DC1-C-4. Service Uses: Locate and design service entries, loading docks, and trash receptacles away from pedestrian areas or to a less visible portion of the site to reduce possible impacts of these facilities on building aesthetics and pedestrian circulation.

DC2 Architectural Concept: Develop an architectural concept that will result in a unified and functional design that fits well on the site and within its surroundings.

DC2-A Massing

DC2-A-1. Site Characteristics and Uses: Arrange the mass of the building taking into consideration the characteristics of the site and the proposed uses of the building and its open space.

DC2-A-2. Reducing Perceived Mass: Use secondary architectural elements to reduce the perceived mass of larger projects.

DC2-B Architectural and Facade Composition

DC2-B-1. Façade Composition: Design all building facades—including alleys and visible roofs— considering the composition and architectural expression of the building as a whole. Ensure that all facades are attractive and well-proportioned.

DC2-B-2. Blank Walls: Avoid large blank walls along visible façades wherever possible. Where expanses of blank walls, retaining walls, or garage facades are unavoidable, include uses or design treatments at the street level that have human scale and are designed for pedestrians.

DC2-C Secondary Architectural Features

DC2-C-1. Visual Depth and Interest: Add depth to facades where appropriate by incorporating balconies, canopies, awnings, decks, or other secondary elements into the façade design. Add detailing at the street level in order to create interest for the pedestrian and encourage active street life and window shopping (in retail areas).

DC2-C-2. Dual Purpose Elements: Consider architectural features that can be dual purpose— adding depth, texture, and scale as well as serving other project functions.

DC2-C-3. Fit With Neighboring Buildings: Use design elements to achieve a successful fit between a building and its neighbors.

DC2-D Scale and Texture

DC2-D-1. Human Scale: Incorporate architectural features, elements, and details that are of human scale into the building facades, entries, retaining walls, courtyards, and exterior spaces in a manner that is consistent with the overall architectural concept

DC2-D-2. Texture: Design the character of the building, as expressed in the form, scale, and materials, to strive for a fine-grained scale, or “texture,” particularly at the street level and other areas where pedestrians predominate.

DC2-E Form and Function

DC2-E-1. Legibility and Flexibility: Strive for a balance between building use legibility and flexibility. Design buildings such that their primary functions and uses can be readily determined from the exterior, making the building easy to access and understand. At the same time, design flexibility into the building so that it may remain useful over time even as specific programmatic needs evolve.

Central Area Supplemental Guidance:

DC2-1 Building Layout and Massing

DC2-1-a. Clarify Concepts: Project concepts should be intelligible and clear. Clarity makes knowledge of the design accessible, thus a larger portion of the community will be able to participate in the planning and design process.

DC2-1-b. Engage the Ground Plane: Building design should relate to the earth, using building forms and massing that engage the ground plane, rather than 'float above'. Ground level transparency should still occur on major pedestrian and commercial streets.

DC2-1-c. Encourage Smaller and Varied Building Forms: Smaller and varied building forms are encouraged. Larger building forms should divide their mass up so that it does not appear as one, monolithic building. These breaks in massing and differentiation should take cues from the surrounding fabric. Vertical and horizontal datums and patterns can help provide a guide for how to articulate and break down the overall massing. Modulated façades for large buildings keep the building inviting and consistent with the finer-grain fabric found in the Central Area neighborhood. As such, projects should use 50' – 75' massing widths as a guide for modulation.

DC2-1-d. Relate Scale and Form to the Adjacent Public Realm: Appropriately scale buildings so that they relate to the scale and form of the adjacent public realm (i.e. the width of the streets and/or affronting open spaces and adjacent smaller scale zones).

DC2-1-e. Façade Impacts: Consider all sides of the building and the impacts each façade has on its immediate neighboring context. If building on a slope, consider the project's roofscape as well.

DC2-1-f. Consider Climate: Consider how each façade may respond to climate conditions such as solar shading and prevailing winds.

DC2-1-g. Upper Floor Setbacks: Consider upper floor setbacks along secondary retail zones. In these less dense areas, tall does not always mean urban. Walkable urban places can be achieved at a smaller scale with buildings that have visual texture through their retail frontage, pedestrian scaled signage, tile details, and accented knee walls, as demonstrated by the businesses along Union St, west of 23rd Avenue.

DC2-1-h. Encourage Family-Sized, Ground-Level units: Where compatible with the surrounding streetscape, family sized, ground related apartment units (2 and 3 bedrooms) with usable adjacent open spaces are encouraged.

DC2-1-i. Cluster Small Businesses: Encourage clusters of small and local businesses together.

1. Reduce the scale of commercial façades so that they are conducive to small business tenants.
2. Include commercial spaces with smaller footprints to promote and accommodate local establishments at street level.
3. Set the maximum length of street frontage for individual businesses to be consistent with the existing business character of the area.
4. Where there is not a strong existing character for the area, follow guidance provided in frontage section (PL3-I).

DC3 Open Space Concept: Integrate open space design with the building design so that they complement each other.

DC3-A Building-Open Space Relationship

DC3-A-1. Interior/Exterior Fit: Develop an open space concept in conjunction with the architectural concept to ensure that interior and exterior spaces relate well to each other and support the functions of the development.

DC3-B Open Space Uses and Activities

DC3-B-1. Meeting User Needs: Plan the size, uses, activities, and features of each open space to meet the needs of expected users, ensuring each space has a purpose and function.

DC3-B-2. Matching Uses to Conditions: Respond to changing environmental conditions such as seasonal and daily light and weather shifts through open space design and/or programming of open space activities.

DC3-B-3. Connections to Other Open Space: Site and design project-related open spaces to connect with, or enhance, the uses and activities of other nearby public open space where appropriate.

DC3-B-4. Multifamily Open Space: Design common and private open spaces in multifamily projects for use by all residents to encourage physical activity and social interaction.

DC3-C Design

DC3-C-1. Reinforce Existing Open Space: Where a strong open space concept exists in the neighborhood, reinforce existing character and patterns of street tree planting, buffers or treatment of topographic changes. Where no strong patterns exist, initiate a strong open space concept that other projects can build upon in the future.

DC3-C-2. Amenities/Features: Create attractive outdoor spaces suited to the uses envisioned for the project.

DC3-C-3. Support Natural Areas: Create an open space design that retains and enhances onsite natural areas and connects to natural areas that may exist off-site and may provide habitat for wildlife.

Central Area Supplemental Guidance:

DC3-1 Common Open Spaces

DC3-1-a. Visible and Accessible Common Courtyards: Where possible, provide common courtyards and yards that are publicly visible and accessible. These spaces should be activated and layered, so that there is a graduation from private outdoor space, to the fully shared realm.

DC3-1-b. Delineate Between Shared and Private Spaces: Encourage courtyard housing and bungalow courts which use landscaping as the delineation between shared and private spaces, instead of fencing.

DC3-1-c. Extend the Public Realm: Provide generous common, open space, including shared courtyards and plazas that serve as extensions of the adjacent public realm.

DC4 Exterior Elements and Finishes: Use appropriate and high quality elements and finishes for the building and its open spaces.

DC4-A Exterior Elements and Finishes

DC4-A-1. Exterior Finish Materials: Building exteriors should be constructed of durable and maintainable materials that are attractive even when viewed up close. Materials that have texture, pattern, or lend themselves to a high quality of detailing are encouraged.

DC4-A-2. Climate Appropriateness: Select durable and attractive materials that will age well in Seattle's climate, taking special care to detail corners, edges, and transitions.

DC4-B Signage

DC4-B-1. Scale and Character: Add interest to the streetscape with exterior signs and attachments that are appropriate in scale and character to the project and its environs.

DC4-B-2. Coordination with Project Design: Develop a signage plan within the context of architectural and open space concepts, and coordinate the details with façade design, lighting, and other project features to complement the project as a whole, in addition to the surrounding context.

DC4-C Lighting

DC4-C-1. Functions: Use lighting both to increase site safety in all locations used by pedestrians and to highlight architectural or landscape details and features such as entries, signs, canopies, plantings, and art.

DC4-C-2. Avoiding Glare: Design project lighting based upon the uses on and off site, taking care to provide illumination to serve building needs while avoiding off-site night glare and light pollution.

DC4-D Trees, Landscape, and Hardscape Materials

DC4-D-1. Choice of Plant Materials: Reinforce the overall architectural and open space design concepts through the selection of landscape materials.

DC4-D-2. Hardscape Materials: Use exterior courtyards, plazas, and other hard surfaced areas as an opportunity to add color, texture, and/or pattern and enliven public areas through the use of distinctive and durable paving materials. Use permeable materials wherever possible.

DC4-D-3. Long Range Planning: Select plants that upon maturity will be of appropriate size, scale, and shape to contribute to the site as intended.

DC4-D-4. Place Making: Create a landscape design that helps define spaces with significant elements such as trees.

DC4-E Project Assembly and Lifespan

DC4-E-1. Deconstruction: When possible, design the project so that it may be deconstructed at the end of its useful lifetime, with connections and assembly techniques that will allow reuse of materials.

Central Area Supplemental Guidance:

DC4-1 Screening

DC4-1-a. Artistic Opportunity: When screening or fencing is used, it should be designed as an artistic opportunity.

DC4-1-b. Allow for Views: Design screening height, porosity, and materials to allow for views in and out of the site, and visual interaction with the public realm.

DC4-2 Building Materials

DC4-2-a. Reinforce Local Cultural References: Consider vibrant and bold uses of color, materials, texture, and light to reinforce local cultural references.

DC4-2-b. Variation and High-Quality Materials: Encourage variation in building materials and employ high quality materials.

DC4-2-c. Reuse Building Materials: Salvage building materials from the site when possible. If reusable materials, such as brick, are removed from demolished buildings, use them in the new development as visible building components.

DC4-3 Building Details and Elements

DC4-3-a. Natural Ventilation: Provide operable windows in a way that promotes natural ventilation.

DC4-3-b. Reflect Human Scale and Craftmanship: Incorporate building materials and details that reflect human scale and the craftsmanship of the building process (ex: use of brick or wood for exterior cladding).

DC4-3-c. Add Human Scale and Façade Texture: Incorporate elements such as bay windows, columns, and deep awnings which add human scale and façade texture.

DC4-3-d. Exhibit Rhythm and Transparency: Façades should exhibit a rhythm of fenestration, and transparency of the inside program out to the public realm.

Central Area Supplemental Guidance:

A.1-1 History and Heritage

A.1-1-a. Express African and Black American Presence: Provide design features to express the African and Black American presence within the neighborhood. Create 'pockets of culture' to represent both the Black American identity within the Central Area, as well as other heritages that have had a large impact on the Central Area's past.

A.1-1-b. Include Visual Arts in the Design Concept: Consider including visual arts as an integral part of the design concept along main street building façades, within highly trafficked pedestrian areas, and within open spaces.

A.1-1-c. Cover Blank Walls with Art: Use any resulting blank walls and surfaces for the visible expression of art that references the history, heritage, and culture of the community.

A.1-1-d. Interpretive Storytelling: Include interpretive opportunities (through visual art, signage, markers, etc.) that tell the story of the neighborhood's history in engaging ways.

A.1-1-e. Reflect Racial, Economical and Multi-Generational Character: Encourage the building design to reflect the racial, economical, and multi-generational character of the community.

A.1-1-f. Support the Black Veteran Community: Developments are encouraged to provide housing and/or amenities for the Black Veteran community.

A.1-1-g. Local Activities and Interests: Provide amenities appropriate to the activities and interests of the local community, such as basketball hoops, chess boards, tot lots and other family oriented activities.

A.1-1-h. Encourage Bicycle Use and Parking: Bicycle use and parking should be encouraged to promote a healthy and active neighborhood and to support local businesses. Bicycle racks should be plentiful, and either be from the Seattle Department of Transportation's bike parking program or be an approved rack of similar "inverted U" or "staple" style. The bicycle racks may also be an opportunity for placemaking, such as having a uniform color for bike racks within the Central District or having distinctive place-names designed into the racks.

A.1-2 For 23rd and Union Character Area

A.1-2-a. Community Characteristics: Community characteristics that are unique to this area include:

1. A cohesive neighborhood grain with historic character that establishes the area as a destination for the surrounding community.
2. An established, pedestrian-scaled neighborhood-commercial area, with a mix of both commercial and residential uses, grounded by locally-owned businesses and institutions.
3. Hub of the African and Black American community.
4. Diverse range of shops, restaurants, entertainment, and places of worship. Specific buildings to note are the Central Cinema (1411 21st Ave) and Katy's Cafe (2000 E Union St).

A.1-2-b. Provide Accessible Open Space and Community Gathering Opportunities: In this area it is especially important to provide additional accessible open space and community gathering opportunities, for example plazas adjacent to the public sidewalks.

A.1-3 For 23rd and Cherry Character Area

A.1-3-a. Community Characteristics: Community characteristics that are unique to this area include:

1. Smaller-scaled fabric with many culturally specific restaurants, as well as community and youth-centered resources.
2. Specific places to note are Garfield High School (400 23rd Ave), Garfield Community Center (2323 E Cherry St), Quincy Jones Performing Arts Center (400 23rd Ave), Medgar Evers Pool (500 23rd Ave), and Eritrean Community Center (2402 E Spruce St).

A.1-4 For 23rd and Jackson Character Area

A.1-4-a. Community Characteristics: Community characteristics that are unique to this area include:

1. Larger-scale, mixed-use commercial district with opportunities for startups, and both large and small scaled businesses.
2. Both a local and regional destination due to its commercial developments, social services, community assets, and shops for daily household needs.
3. Specific places to note are the Pratt Fine Arts Center (1902 S Main St), Wood Technology Center (2310 S Lane St), Seattle Vocational Institute (2120 S Jackson St), Langston Hughes Performing Arts Institute (104 17th Ave S), and Douglass Truth Library (2300 E Yesler Way).

Central Area Supplemental Guidance:

A.2-1 Cultural Placemakers

A.2-1-a. Emphasize Cultural Placemakers: Emphasize Cultural Placemakers within the community. The Cultural Placemaker map identifies several key intersections in the Central Area that serve as cultural anchors for their surrounding areas. Projects at these corner locations should stimulate activities and create visual interest to enhance the Central Area's identity and a sense of arrival, such as:

1. Providing street furniture, public art, landscape elements, pedestrian lighting, mosaics, varied paving patterns, etc.
2. Creating façade enhancements at prominent building corners.

3. Creating a building layout and setbacks that provide opportunities for open space that expand the usable space beyond the width of the sidewalks.
4. Providing larger landscape buffers at placemakers along heavier trafficked streets.

RECOMMENDATIONS

At the conclusion of the RECOMMENDATION meeting, the Board recommended approval of the project with no conditions.

The recommendation summarized above was based on the design review packet dated Thursday, February 06, 2020, and the materials shown and verbally described by the applicant at the Thursday, February 06, 2020 Design Recommendation meeting. After considering the site and context, hearing public comment, reconsidering the previously identified design priorities and reviewing the materials, the four Design Review Board members recommended APPROVAL of the subject design and departures with no conditions.



**FINAL RECOMMENDATION OF THE
CENTRAL AERA DESIGN REVIEW BOARD**

Record Number: 3034186-LU

Address: 2012 24th Avenue South

Applicant: Megan McKay, Johnston Architects

Date of Meeting: Thursday, February 06, 2020

Board Members Present: Sharon Khosla, Chair
Kenny Pleasant
Lauren Powers (substitute)
May So (substitute)

Board Members Absent: Azzurra Cox
Dennis Comer
Jeffrey Floor

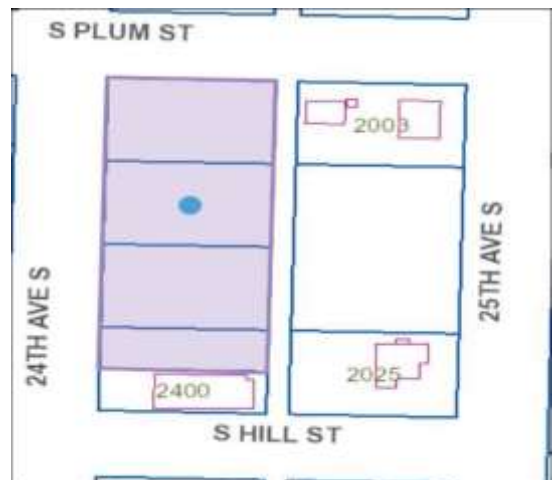
SDCI Staff Present: Lisa Rutzick, Design Review Manager
Greg Johnson, Senior Land Use Planner

SITE & VICINITY

Site Zone: Commercial 1 [C1-75 (M1)]

Nearby Zones: (North) Neighborhood Commercial 3 [NC3-75 (M1)]
(South) NC3-75 (M)
(East) C1-75 (M1)
(West) C1-75 (M1)

Lot Area: West: 31,500 SF



Current Development:

The meeting was conducted for two adjacent projects that are divided by an unimproved alley right-of-way and are therefore considered two separate development sites. The west site is (#3034186-LU) is compiled of 4 existing tax parcels and is currently undeveloped. The east site (#3033433-LU) is compiled of 3 existing tax parcels. There are two existing single family residences located at the northeast and southeast corners of the site. The west site contains 3 existing Exceptional Trees; an Austrian Black Pine (24.1-inch), a Dwarf Alberta Spruce (10.2-inch), and a Western Yew (14.7-inch). The two sites slope approximately 33-feet downward from the northeast corner of the east site to the southwest corner of the west site.

Surrounding Development and Neighborhood Character:

The sites are located in the Mt. Baker Hub Urban Village. The sites are located within a commercial zone. The vicinity is developed with a mix a new townhouse construction that is contemporary in design, few existing single family structures, light industrial, and institutional uses and community services including the Lighthouse Center for the Blind, American Red Cross, Treehouse, churches, and the Northwest African American Museum. The majority of these structures are lowrise, approximately 1-3 stories in height.

The Rainier Ave S corridor is located 2 blocks to the west and provides a variety of commercial uses. The sites are served by transit along S Plum St, Rainier Ave S and Martin Luther King Junior Way S. Martin Luther King Junior Memorial Park, Seattle Children's Play Garden, Sam Smith Park and Bradner Gardens Park provide recreational opportunities within a half mile of the sites.

Access:

There is no existing vehicular access connecting the adjacent rights of way to the site. Vehicular access is proposed to occur from the alley. The alley will be improved as part of the scope of this development. Pedestrian access is proposed to occur from each street frontage; 24th Ave S to the west, S Plum St to the north, 25th Ave S to the east, and S Hill St to the south.

Environmentally Critical Areas:

There are two Steep Slope Erosion Hazard Areas located on the west property line of #3034186-LU and the south property line of #3033433-LU. There is a Liquefaction Prone Area located at the southwest corner of #3034186-LU.

PROJECT DESCRIPTION

3034186-LU, 2012 24th Avenue S. (West Site): Land Use Application to allow 5, 3-story townhouse buildings (28 units total) with 2 live-work units. Parking for 26 vehicles proposed. Early Design Guidance review conducted under 3033655-EG.

The design packet includes information presented at the meeting, and is available online by entering the record number at this website:

<http://www.seattle.gov/DPD/aboutus/news/events/DesignReview/SearchPastReviews/default.aspx>

Any recording of the Board meeting is available in the project file. This meeting report summarizes the meeting and is not a meeting transcript.

The packet is also available to view in the file, by contacting the Public Resource Center at SDCI:

Mailing Public Resource Center
Address: 700 Fifth Ave., Suite 2000
P.O. Box 34019
Seattle, WA 98124-4019

Email: PRC@seattle.gov

EARLY DESIGN GUIDANCE April 18, 2019

PUBLIC COMMENT

The following public comments were offered at this meeting:

- Preferred Option C as the breaks in the mass will allow for natural light, which will improve visibility around the site.
- Concerned about increased traffic and parking impacts in the vicinity.

SDCI Staff also summarized design related comments received in writing prior to the meeting:

- Concerned about the lack of ADA accessibility in units and throughout the site design.
- Would like to see communal indoor and outdoor areas, communal gardens, entryways that encourage resident interaction, and safe play areas for children.
- Noted there are several large evergreen trees on site and no plan to protect them.

One purpose of the design review process is for the Board and City to receive comments from the public that help to identify feedback and concerns about the site and design concept, identify applicable Seattle Design Guidelines and Neighborhood Design Guidelines of highest priority to the site and explore conceptual design, siting alternatives and eventual architectural design. Concerns with off-street parking, traffic and construction impacts are reviewed as part of the environmental review conducted by SDCI and are not part of this review.

All public comments submitted in writing for this project can be viewed using the following link and entering the record numbers: <http://web6.seattle.gov/dpd/edms/>

PRIORITIES & BOARD RECOMMENDATIONS

After visiting the site, considering the analysis of the site and context provided by the proponents, and hearing public comment, the Design Review Board members provided the following siting and design guidance.

1. Massing & Composition

- a. The Board unanimously supported Option C, the applicant's preferred massing options, for each project. The Board, however, provided strong guidance for further development and continued community engagement, as discussed herein. (CS3, DC2, DC3)

- b. The Board was concerned that the boxy architectural language appeared too algorithmic, was relentless, and needed to be broken up. The Board directed further modulation of the facades and roof form as it relates to individual units, differentiation between the various structures onsite, and variation in landscaping and materiality. The Board specifically prioritized Central Area Design Guideline DC2-1-c, Encourage Smaller and Varied Building Forms, with an emphasis on varied rather than small forms. Ultimately, the design should draw people into the site and down the alley. (DC2-1-c, DC4-3)
- c. The Board generally supported the design inspiration images provided on page 15 of the EDG packet, but did not support the façade study. The Board was concerned that the colored doors alone do not appear to be a sincere response to local heritage. The Board noted that the response should be less about surface treatment and more relevant to the neighborhood, such as incorporating stoops and activating the street frontages. (DC4-2, DC4-3)
- d. The Board specifically prioritized citywide Design Guideline DC2-B-1, Façade Composition, and Central Area Design Guidelines DC4-2, Building Materials, and DC4-3, Building Details and Elements. (DC2-B-1, DC4-2, DC4-3)

2. Response to Context & Community

- a. The Board was disappointed by the lack of comments received in response to early public outreach and directed further engagement with local neighborhood organizations. The Board noted that this near full block site is located at the southern gateway to the Central Area, on the way to the Northwest African American Museum, and therefore should reflect a local and culturally relevant design influence. The Board specifically prioritized Central Area Design Guideline CS3-1, Neighborhood Context. (CS3-1, A.1-1)
- b. The Board noted that the Central Area is an Arts and Culture Hub and recommended engaging a local artist early in the design process. The Board encouraged the interspersing of art throughout the site, including the mosaic art pieces, as described on page 14 of the EDG packet, or other sculptural pieces. (PL1-2-c, A.1-1-b)
- c. The Board directed the applicant to study incorporating live/work uses at the corners of the site or adjacent to the courtyard spaces to spill-out and activate the public realm. The Board noted that the growth of residential development and existing community services would benefit from additional social infrastructure. The Board specifically prioritized Central Area Design Guideline PL3-1-f, Live/Work Spaces. (PL3-1-f)
- d. The Board encouraged providing housing for a variety of incomes and noted that the mix townhouse sizes should be evenly dispersed throughout the site. (A.1-1-e)

3. Pedestrian Circulation & Open Space

- a. The Board discussed the importance of placemaking at the site. The Board directed the applicant to conduct a thorough study of how the landscape and open space plan works as a complete system, creates a network of places within and around the site, and activates the street frontages. The Board specifically prioritized Central Area Design Guidelines PL1-1, Accessible Open Space; PL1-2, Connection Back to the Community; and DC3-1, Common Open Space. (PL1-1, PL1-2, DC4-D-4)

- b. The Board noted that there is heavy east-west pedestrian traffic in the vicinity and would like the public to feel like they can move through the site. The Board recommended maintaining a porous site and did not support the inclusion of gates at pedestrian access points. (PL1-1-a, PL2, DC3-1-a)
- c. The Board recommended incorporating pockets of pedestrian amenities around the perimeter of the site to promote social interaction, engage the street frontages, and activate the site. The Board noted that the treatment of S Plum St. and the northeast corner is particularly important due to heavy pedestrian volumes and proximity to the Light House Center for the Blind. The Board specifically prioritized Central Area Design Guideline PL3-2-e, Activate the Planter Zone. (PL3-2-e)
- d. In agreement with public comment, the Board was concerned about the lack of safe play spaces for children onsite and specifically prioritized Central Area Design Guideline PL1-3, Livability for Families and Elderly. The Board encouraged the applicant to consider exchanging parking spaces or units for additional open space onsite. Ultimately, the design should incorporate a greater amount of useable common open space at grade. (PL1-3, DC3-B, DC3-1)
- e. The Board strongly recommended shared stoops, rather than private individual stoops, as it promotes interaction between neighbors. The Board specifically prioritized Central Area Design Guidelines PL3-1-g, Couple Entries; PL3-1-h, Exterior Access at Ground Level; and PL3-2-l, Porches and Stoops. (PL3-1-g, PL3-1-h, PL3-2-l)
- f. The Board did not support the abundance of private roof decks as they fail to promote social interaction and encouraged eliminating and/or combining roof decks into shared spaces. The Board specifically prioritized Central Area Design Guideline PL1-2-d, Common and Accessible Open Spaces, which states, *“Ensure exclusive rooftop, private, or gated open spaces are not the only form of open space provided for the project.”* (PL1-2-d)
- g. The Board acknowledged the accessibility challenge created by site topography. In response to public comment, the Board directed increasing site accessibility at the northern half of the site and common courtyard spaces. (PL2-A)

2. Landscape & Exceptional Trees

- a. The Board noted that elements of water and bioretention should be used to provide variation and visual interest along the alley. (CS1-E-1)
- b. The Board supported the retention of the Austrian Black Pine Exceptional Tree. (CS1-D-1, DC4-D-4)
- c. The Board supported the removal of the Western Yew Exceptional Tree and the relocation of the Dwarf Alberta Spruce Exceptional Tree for the design-based rationale provided on page 26 of the EDG packet. The Board noted that the relocation of the Dwarf Alberta Spruce contributed well to the site design. (PL1-A-1, DC3-1, CS1-B, CS3-C-3)

DEVELOPMENT STANDARD DEPARTURES

At the time of the Early Design Guidance meeting, no departures were requested.

RECOMMENDATION February 6, 2020

PUBLIC COMMENT

The following public comments were offered at this meeting:

- Supported the way the buildings engage the street and fit into the sloping topography.
- Supported the introduction of live/work buildings along South Plum Street.
- Supported the variation in the building facades with application of materials.
- Supported the incorporation of required powerline setbacks into the design without obviously being powerline setbacks.
- Supported saving the existing tree.
- Supported placing building frontage on all four sides of the block.
- Supported varied landscaping.
- Preferred for greater stoop setback from street frontages.
- Concerned with ambiguous definition of public versus private spaces within the site.
- Concerned by the relentless material application that could use additional variety of materials and colors.
- Supported the design of the community spaces related to the patrons of The Lighthouse for the Blind, specifically in the incorporation of sculpture and braille into artwork and the intent for fragrant gardens to encourage the use of non-visual senses.
- Supported possible retail uses in the proposed live/work buildings that can be in proximity to The Lighthouse for the Blind.

SDCI staff also summarized design related comments received in writing prior to the meeting:

- Noted the only open spaces were for vehicle circulation; none were suitable for community interaction or children.
- Stated the south and west facing parts of the block would be ideal for a P-Patch, garden, or communal space.
- Questioned if any of the units would be fully ADA accessible.

One purpose of the design review process is for the Board and City to receive comments from the public that help to identify feedback and concerns about the site and design concept, identify applicable Seattle Design Guidelines and Neighborhood Design Guidelines of highest priority to the site and explore conceptual design, siting alternatives and eventual architectural design.

All public comments submitted in writing for this project can be viewed using the following link and entering the record number-LU: <http://web6.seattle.gov/dpd/edms/>

PRIORITIES & BOARD RECOMMENDATIONS

After visiting the site, considering the analysis of the site and context provided by the proponents, and hearing public comment, the Design Review Board members provided the following recommendations.

1. Street Frontage

- a. The Board noted the improved relationship of the porches and entries to the street frontage since the EDG meeting. (*Central Area* PL3-1-g. Couple Entries, *Central Area* PL3-1-h. Exterior Access at Ground Level, *Central Area* PL3-2-l. Porches and Stoops)
- b. The Board supported the proposed variation of unit types as an appropriate response to EDG guidance to provide a varied street frontage and façade modulation (*Central Area* DC2-1-c. Encourage Smaller and Varied Building Forms, *Central Area* DC4-3. Building Details and Elements).
- c. The Board supported the proposed integration of landscape and hardscape along the street frontages with a variety of street trees and the alignment of special landscaping and hardscaping aligned with site entrances and courtyards (*Central Area* PL3-2-e. Activate the Planter Zone).
- d. Noting the similar appearance of the of the residential and live/work units, the Board recommended strengthening the commercial appearance of the live/work units to provide visual differentiation from the residential units. The Board recommended the following changes to achieve this differentiation, but declined to recommend a condition. (PL3-1-a. Storefront Variation, DC4-A-1. Exterior Finish Materials):
 - i. Removal of the wood material from the ground level in favor of a material that is slightly differentiated from the upper level metal panel. The Board suggested utilizing the wood as a soffit material (*Central Area* PL3-1. Frontages).
 - ii. Application of storefront windows at the ground level instead of vinyl windows. The Board supported the use of full-height windows at the ground-level (PL1-B-3. Pedestrian Amenities, DC4-A-1. Exterior Finish Materials).

2. Interior Courtyards:

- a. The Board identified the shifts in landscape planter height along the interior courtyard as a successful method for reducing the scale of the interior space (*Central Area* DC3-1 Common Open Spaces).

3. Building Details:

- a. The Board supported the proposed façade design as a successful response to EDG guidance (*Central Area* DC2-1-c. Smaller and Varied Building Forms, *Central Area* DC4-3. Building Details and Elements).
- b. The Board identified the stepping of side gable forms visible in renderings on packet page 12 as an appropriate method for allowing the site topography to inform the building design (CS2-B-1. Site Characteristics, *Central Area* DC2-1. Building Layout and Massing).
- c. The Board expressed concern over the roof transitions, especially the transitions between flat and gable roofs, and encouraged the applicant to develop a consistent

language to deal with awkward transition elements such as hand rails and triangular portions of exterior walls. The Board declined to recommend this as a condition. (DC2-B-1. Façade Composition).

- d. The Board identified the lack of through-wall building vents on the façade elevation drawings, and encouraged the alignment of exterior vents to ensure consistency with the design concept (guidelines), but did not recommend a condition.
- e. Citing public comment recommending greater variation in exterior color and materiality throughout the project to simulate the variety of building materials and colors present in the surrounding neighborhood, the Board recommended, but did not condition, employing techniques such as minor shifts in wood stain colors or entry/porch colors to add visual individuality among the proposed buildings (*Central Area CS3-1. Neighborhood Context, Central Area PL3-1. Frontages*).
- f. The Board suggested revising the gutter system at the ground level of the Live/Work units to reduce the length of horizontal laterals along the ground level weather protection (PL2-C-2. Design Integration).

4. Parking Area:

- a. The Board encouraged the applicant to reduce the visual expanse of the parking area through the visual differentiation between the alley right-of-way and the parking spaces or a similar form of visual transition that is integrated into the overall design. The Board declined to recommend this as a condition. (DC4-D-2. Hardscape Materials).

DEVELOPMENT STANDARD DEPARTURES

The Board's recommendation on the requested departure(s) will be based on the departure's potential to help the project better meet these design guidelines priorities and achieve a better overall project design than could be achieved without the departure(s). The Board's recommendation will be reserved until the final Board meeting.

At the time of the **FINAL** Recommendation meeting the following departures were requested:

1. **Floor Height/Setback (SMC 23.47A.008.D.2):** The Code requires the floor of a dwelling unit located along the street-level to have a minimum height of 4 feet above or 4 feet below sidewalk grade or have a minimum 10 foot setback from the sidewalk. The applicant requested departures for floor heights between 1 foot, 6 inches and 4 feet above grade and setbacks from sidewalk between 6 feet and 10 feet.

The Board unanimously approved the departure in all proposed instances, stating that the departure allows increased width of interior courtyards, which addresses guidelines related to open space (*Central Area DC3-1. Common Open Spaces, DC3 Open Spaces*). The Board also noted that the proposed heights of porches needing departures are generally more consistent with the recommended residential stoop height of 30 inches within the Central Area Design Guidelines (PL3-2-k). The Board stated that the proposed landscaping also helps to integrate the porches within the street frontage.

DESIGN REVIEW GUIDELINES

The Seattle Design Guidelines and Neighborhood Design Guidelines recognized by the Board as Priority Guidelines are identified above. All guidelines remain applicable and are summarized below. For the full text please visit the [Design Review website](#).

CONTEXT & SITE

CS1 Natural Systems and Site Features: Use natural systems/features of the site and its surroundings as a starting point for project design.

CS1-A Energy Use

CS1-A-1. Energy Choices: At the earliest phase of project development, examine how energy choices may influence building form, siting, and orientation, and factor in the findings when making siting and design decisions.

CS1-B Sunlight and Natural Ventilation

CS1-B-1. Sun and Wind: Take advantage of solar exposure and natural ventilation. Use local wind patterns and solar gain to reduce the need for mechanical ventilation and heating where possible.

CS1-B-2. Daylight and Shading: Maximize daylight for interior and exterior spaces and minimize shading on adjacent sites through the placement and/or design of structures on site.

CS1-B-3. Managing Solar Gain: Manage direct sunlight falling on south and west facing facades through shading devices and existing or newly planted trees.

CS1-C Topography

CS1-C-1. Land Form: Use natural topography and desirable landforms to inform project design.

CS1-C-2. Elevation Changes: Use the existing site topography when locating structures and open spaces on the site.

CS1-D Plants and Habitat

CS1-D-1. On-Site Features: Incorporate on-site natural habitats and landscape elements into project design and connect those features to existing networks of open spaces and natural habitats wherever possible. Consider relocating significant trees and vegetation if retention is not feasible.

CS1-D-2. Off-Site Features: Provide opportunities through design to connect to off-site habitats such as riparian corridors or existing urban forest corridors. Promote continuous habitat, where possible, and increase interconnected corridors of urban forest and habitat where possible.

CS1-E Water

CS1-E-1. Natural Water Features: If the site includes any natural water features, consider ways to incorporate them into project design, where feasible.

CS1-E-2. Adding Interest with Project Drainage: Use project drainage systems as opportunities to add interest to the site through water-related design elements.

Central Area Supplemental Guidance:

CS1-1 Local Topography

CS1-1-a. Respond to Local Topography: Respond to local topography with terraces, stoops, stepping facades, or similar approaches. Use appropriately scaled rockeries, stairs, and landscaping to transition between the sidewalk, building façade, and entrances in keeping with local topographic conditions, and existing neighboring approaches.

CS1-1-b. Step Fencing and Screening: If fencing or screening is included in the design, it should step along with the topography.

CS1-2 Connection to Nature

CS1-2-a. Impact on Solar Access: Be sensitive to the project's impact on solar access to adjacent streets, sidewalks, and buildings. Where possible, consider setting taller buildings back at their upper floors, or pushing buildings back from the street and providing wider sidewalks so sunlight can reach pedestrian level spaces and neighboring properties. Ensure sunlight reaches building entrances whenever possible.

CS1-2-b. Provide Vegetation: Provide vegetated spaces throughout the project. Vertical green walls are encouraged in addition to landscape beds.

CS1-2-c. Gardens and Farming Opportunities: Incorporate edible gardens and urban farming opportunities within the design, both at grade, and on the roof for larger buildings.

CS1-2-d. Unify with Landscaping: Unify streets through street trees and landscaping.

- a. Consider tree species as a unifying feature to provide identifiable character to a street or project.
- b. Incorporate an irrigation plan for the trees and other landscaping proposed to ensure maintainability of the plants, or include low-maintenance, drought-resistant species.

CS1-2-e. Protect Sidewalks: Create protected sidewalks by utilizing planter strips with lush landscaping, to help create a "room" between the street and the building.

CS2 Urban Pattern and Form: Strengthen the most desirable forms, characteristics, and patterns of the streets, block faces, and open spaces in the surrounding area.

CS2-A Location in the City and Neighborhood

CS2-A-1. Sense of Place: Emphasize attributes that give a distinctive sense of place. Design the building and open spaces to enhance areas where a strong identity already exists, and create a sense of place where the physical context is less established.

CS2-A-2. Architectural Presence: Evaluate the degree of visibility or architectural presence that is appropriate or desired given the context, and design accordingly.

CS2-B Adjacent Sites, Streets, and Open Spaces

CS2-B-1. Site Characteristics: Allow characteristics of sites to inform the design, especially where the street grid and topography create unusually shaped lots that can add distinction to the building massing.

CS2-B-2. Connection to the Street: Identify opportunities for the project to make a strong connection to the street and public realm.

CS2-B-3. Character of Open Space: Contribute to the character and proportion of surrounding open spaces.

CS2-C Relationship to the Block

CS2-C-1. Corner Sites: Corner sites can serve as gateways or focal points; both require careful detailing at the first three floors due to their high visibility from two or more streets and long distances.

CS2-C-2. Mid-Block Sites: Look to the uses and scales of adjacent buildings for clues about how to design a mid-block building. Continue a strong street-edge and respond to datum lines of adjacent buildings at the first three floors.

CS2-C-3. Full Block Sites: Break up long facades of full-block buildings to avoid a monolithic presence. Provide detail and human scale at street-level, and include repeating elements to add variety and rhythm to the façade and overall building design.

CS2-D Height, Bulk, and Scale

CS2-D-1. Existing Development and Zoning: Review the height, bulk, and scale of neighboring buildings as well as the scale of development anticipated by zoning for the area to determine an appropriate complement and/or transition.

CS2-D-2. Existing Site Features: Use changes in topography, site shape, and vegetation or structures to help make a successful fit with adjacent properties.

CS2-D-3. Zone Transitions: For projects located at the edge of different zones, provide an appropriate transition or complement to the adjacent zone(s). Projects should create a step in perceived height, bulk and scale between the anticipated development potential of the adjacent zone and the proposed development.

CS2-D-4. Massing Choices: Strive for a successful transition between zones where a project abuts a less intense zone.

CS2-D-5. Respect for Adjacent Sites: Respect adjacent properties with design and site planning to minimize disrupting the privacy of residents in adjacent buildings.

Central Area Supplemental Guidance:

CS2-1 Transition and Delineation of Zones

CS2-1-a. Provide Privacy Layering and Scale: Where denser zones transition to lower density residential zones, provide privacy layering and scale for ground related entrances, porches, and stoops on façades facing the less dense residential zone.

CS2-1-b. Transition using Massing and Articulation: In addition to building height, use building massing and articulation to transition to single-family scaled fabric. Other acceptable methods include setbacks, building footprint size and placement on the site, building width, façade modulation, and roof line articulation.

CS2-1-c. Relate to Human Scale: The use of appropriately scaled residential elements, such as bay windows and balconies, on larger buildings next to single-family zones are encouraged to better relate to the human scale. This is especially important for buildings four stories and lower.

CS2-1-d. Reduce Building Mass Using Passageways: Along with smaller building massing, the use of breezeways, portals, and through-block connections help to lessen the mass of the overall building, and add to the existing network of pedestrian pathways.

CS3 Architectural Context and Character: Contribute to the architectural character of the neighborhood.

CS3-A Emphasizing Positive Neighborhood Attributes

CS3-A-1. Fitting Old and New Together: Create compatibility between new projects, and existing architectural context, including historic and modern designs, through building articulation, scale and proportion, roof forms, detailing, fenestration, and/or the use of complementary materials.

CS3-A-2. Contemporary Design: Explore how contemporary designs can contribute to the development of attractive new forms and architectural styles; as expressed through use of new materials or other means.

CS3-A-3. Established Neighborhoods: In existing neighborhoods with a well-defined architectural character, site and design new structures to complement or be compatible with the architectural style and siting patterns of neighborhood buildings.

CS3-A-4. Evolving Neighborhoods: In neighborhoods where architectural character is evolving or otherwise in transition, explore ways for new development to establish a positive and desirable context for others to build upon in the future.

CS3-B Local History and Culture

CS3-B-1. Placemaking: Explore the history of the site and neighborhood as a potential placemaking opportunity. Look for historical and cultural significance, using neighborhood groups and archives as resources.

CS3-B-2. Historical/Cultural References: Reuse existing structures on the site where feasible as a means of incorporating historical or cultural elements into the new project.

Central Area Supplemental Guidance:

CS3-1 Neighborhood Context

CS3-1-a. Retain Neighborhood Character: Retain and encourage the extension of existing positive attributes of the surrounding neighborhood character.

CS3-1-b. Continue Existing Neighborhood Fabric: Where appropriate, encourage the preservation, rehabilitation, adaptive reuse, and/or addition to existing structures as a way to continue the existing neighborhood fabric.

CS3-1-c. Include High Ceilings at Ground Level: Include high ceilings in ground floor spaces of new structures consistent with older character structures in the vicinity. Floor to ceiling heights of at least 15 feet with clerestory windows are encouraged for commercial ground floors.

PUBLIC LIFE

PL1 Connectivity: Complement and contribute to the network of open spaces around the site and the connections among them.

PL1-A Network of Open Spaces

PL1-A-1. Enhancing Open Space: Design the building and open spaces to positively contribute to a broader network of open spaces throughout the neighborhood.

PL1-A-2. Adding to Public Life: Seek opportunities to foster human interaction through an increase in the size and quality of project-related open space available for public life.

PL1-B Walkways and Connections

PL1-B-1. Pedestrian Infrastructure: Connect on-site pedestrian walkways with existing public and private pedestrian infrastructure, thereby supporting pedestrian connections within and outside the project.

PL1-B-2. Pedestrian Volumes: Provide ample space for pedestrian flow and circulation, particularly in areas where there is already heavy pedestrian traffic or where the project is expected to add or attract pedestrians to the area.

PL1-B-3. Pedestrian Amenities: Opportunities for creating lively, pedestrian oriented open spaces to enliven the area and attract interest and interaction with the site and building should be considered.

PL1-C Outdoor Uses and Activities

PL1-C-1. Selecting Activity Areas: Concentrate activity areas in places with sunny exposure, views across spaces, and in direct line with pedestrian routes.

PL1-C-2. Informal Community Uses: In addition to places for walking and sitting, consider including space for informal community use such as performances, farmer's markets, kiosks and community bulletin boards, cafes, or street vending.

PL1-C-3. Year-Round Activity: Where possible, include features in open spaces for activities beyond daylight hours and throughout the seasons of the year, especially in neighborhood centers where active open space will contribute vibrancy, economic health, and public safety.

Central Area Supplemental Guidance:

PL1-1 Accessible Open Space

PL1-1-a. Safety & Connectivity: Provide safe and well connected open spaces. Utilize walkways and linkages to visually and physically connect pedestrian paths with neighboring projects, shared space and public spaces such as streets. Use linkages to create and contribute to an active and well-connected open space network.

PL1-1-b. Neighborhood Nodes & Business Corridors: Larger projects around important neighborhood nodes should create generous recessed entries, corner plazas, and more usable open space adjoining the streets. Projects along dense business corridors should maintain a continuous street wall definition contributing to the area's urban feel.

PL1-1-c. Transparent Indoor Community Spaces: Incorporate transparent and open indoor community meeting spaces at the ground level of larger projects. Avoid having any window coverings or window film that permanently obscure views into or out of the space.

PL1-2 Connection Back to the Community

PL1-2-a. Multi-Purpose Gathering Spaces: Provide cultural and place-specific open spaces that can be used for a variety of uses including social gathering, festivals, and other larger celebrations.

PL1-2-b. Weather Protection: When providing open gathering spaces for the community, include weather protection to ensure the space can remain active all year long.

PL1-2-c. Lighting, Art and Special Features: Enhance gathering places with lighting, art and features, so that the scale of the art and special features are commensurate with the scale of the new development.

PL1-2-d. Common & Accessible Open Spaces: Ensure exclusive rooftop, private, or gated open spaces are not the only form of open space provided for the project. Prioritize common, accessible, ground level open space at the building street fronts and/or with courtyards that are not restricted or hidden from street views.

PL1-2-e. Hardscapes: Not all open spaces need to be landscaped; hardscapes are encouraged when sized and designed to encourage active usage. At these locations, building edges should be inviting while creating well defined open spaces for common use. These spaces are especially important close to prominent intersections, streets, and Cultural Placemaker locations. In areas where it is not feasible to be open to physical pedestrian access, visual openness should be provided.

PL1-2-f. Rooftop Vegetation: When providing vegetation at the roof level, consider urban agriculture instead of a passive green roof to provide residents access to fresh produce.

PL1-3 Livability for Families and Elderly

PL1-3-a. Safe Play Areas: Provide safe areas for children to play where they can be seen. Incorporate seating areas nearby for parents, guardians, and other community members to congregate.

PL1-3-b. Rooftop Gathering Spaces: Consider utilizing building rooftops as an opportunity for family gathering and gardening.

PL1-3-c. Preserve Alleys for Access and Use: Where applicable, preserve alleys for pedestrian access and service use. Provide adequate lighting, transparency and entrances to ensure active usage.

PL1-3-d. Multi-Generational Gathering Spaces: Provide multi-generational community gathering spaces for young and old to recreate and converse together.

PL2 Walkability: Create a safe and comfortable walking environment that is easy to navigate and well-connected to existing pedestrian walkways and features.

PL2-A Accessibility

PL2-A-1. Access for All: Provide access for people of all abilities in a manner that is fully integrated into the project design. Design entries and other primary access points such that all visitors can be greeted and welcomed through the front door.

PL2-A-2. Access Challenges: Add features to assist pedestrians in navigating sloped sites, long blocks, or other challenges.

PL2-B Safety and Security

PL2-B-1. Eyes on the Street: Create a safe environment by providing lines of sight and encouraging natural surveillance.

PL2-B-2. Lighting for Safety: Provide lighting at sufficient lumen intensities and scales, including pathway illumination, pedestrian and entry lighting, and/or security lights.

PL2-B-3. Street-Level Transparency: Ensure transparency of street-level uses (for uses such as nonresidential uses or residential lobbies), where appropriate, by keeping views open into spaces behind walls or plantings, at corners, or along narrow passageways.

PL2-C Weather Protection

PL2-C-1. Locations and Coverage: Overhead weather protection is encouraged and should be located at or near uses that generate pedestrian activity such as entries, retail uses, and transit stops.

PL2-C-2. Design Integration: Integrate weather protection, gutters and downspouts into the design of the structure as a whole, and ensure that it also relates well to neighboring buildings in design, coverage, or other features.

PL2-C-3. People-Friendly Spaces: Create an artful and people-friendly space beneath building.

PL2-D Wayfinding

PL2-D-1. Design as Wayfinding: Use design features as a means of wayfinding wherever possible.

PL3 Street-Level Interaction: Encourage human interaction and activity at the street-level with clear connections to building entries and edges.

PL3-A Entries

PL3-A-1. Design Objectives: Design primary entries to be obvious, identifiable, and distinctive with clear lines of sight and lobbies visually connected to the street.

PL3-A-2. Common Entries: Multi-story residential buildings need to provide privacy and security for residents but also be welcoming and identifiable to visitors.

PL3-A-3. Individual Entries: Ground-related housing should be scaled and detailed appropriately to provide for a more intimate type of entry.

PL3-A-4. Ensemble of Elements: Design the entry as a collection of coordinated elements including the door(s), overhead features, ground surface, landscaping, lighting, and other features.

PL3-B Residential Edges

PL3-B-1. Security and Privacy: Provide security and privacy for residential buildings through the use of a buffer or semi-private space between the development and the street or neighboring buildings.

PL3-B-2. Ground-Level Residential: Privacy and security issues are particularly important in buildings with ground-level housing, both at entries and where windows are located overlooking the street.

PL3-B-3. Buildings with Live/Work Uses: Maintain active and transparent facades in the design of live/work residences. Design the first floor so it can be adapted to other commercial use as needed in the future.

PL3-B-4. Interaction: Provide opportunities for interaction among residents and neighbors.

PL3-C Retail Edges

PL3-C-1. Porous Edge: Engage passersby with opportunities to interact visually with the building interior using glazing and transparency. Create multiple entries where possible and make a physical and visual connection between people on the sidewalk and retail activities in the building.

PL3-C-2. Visibility: Maximize visibility into the building interior and merchandise displays. Consider fully operational glazed wall-sized doors that can be completely opened to the street, increased height in lobbies, and/or special lighting for displays.

PL3-C-3. Ancillary Activities: Allow space for activities such as sidewalk vending, seating, and restaurant dining to occur. Consider setting structures back from the street or incorporating space in the project design into which retail uses can extend.

Central Area Supplemental Guidance:

PL3-1 Frontages

PL3-1-a. Design Elements: Encourage color, material, and signage variation in storefront design.

PL3-1-b. Emulate Pedestrian-Oriented Context: Design ground floor frontages in commercial and mixed-use areas that emulate or improve upon the surrounding pedestrian-oriented context, while acknowledging the pedestrian patterns that exist.

PL3-1-c. Promote Transparency: Promote transparency and “eyes on the street.” No reflective or obscure glass should be used. Discourage retailers from putting display cases or window film up against windows to maintain transparency into commercial spaces.

PL3-1-d. Step Storefronts Along the Grade: Avoid grade separations at retail. Storefronts should step along with the grade (ex: 30’ max length of any floor level on a sloping frontage) with a focus on accessibility.

PL3-1-e. Frequent Entrances and Expressed Breaks: In pedestrian-oriented commercial areas, provide frequent entrances and expressed breaks along storefronts through columns or pilasters at regular intervals of 25 to 30 feet, to accommodate and encourage smaller retailers and community-oriented businesses.

PL3-1-f. Live/Work Spaces: Live/work spaces should be designed to activate street frontage, maintain transparent windows, and arrange the interior to place work space at the street windows.

PL3-1-g. Couple Entries: At residential projects, provide coupled entries where possible to foster a sense of community and visual interest in building entryways. Provide generous porches at these entries to encourage sitting and watching the street.

PL3-1-h. Exterior Access at Ground Level: Provide exterior access to ground floor residential units. This interior/exterior connection should occur frequently with entrances placed at a regular interval.

PL3-2 Streetscape Treatment

PL3-2-a. Emphasize Building Relationship to the Street: Emphasize the relationship between buildings and their entrances to the street, pedestrians, and neighboring buildings both adjacent and across the street. Provide special treatment through paving or building materials to highlight each business’s presence along the street.

PL3-2-b. Recessed Business Entries: Provide recessed business entries to encourage a slower pedestrian pace where people have sheltered space to stop and gather.

PL3-2-c. Overhead Weather Protection: To protect pedestrians along the sidewalk, provide awnings or overhead weather protection at all non-residential frontages, neighborhood nodes, and on west-facing facades with a minimum depth of 6’. Larger

commercial projects should have deeper coverage, with a minimum depth of 8' at all street frontages, especially street corners.

PL3-2-d. Pedestrian Environment: Encourage a quality pedestrian environment that provides safe, comfortable routes for pedestrians that reflect the existing character of the building fabric.

PL3-2-e. Activate the Planter Zone: Encourage activation of the planter zone to include community gardens, as well as street trees and pedestrian furniture (with SDOT concurrence).

PL3-2-f. Limit Solid Barriers and Blank Walls: Limit the placement of solid barriers or blank walls next to the sidewalk. Consider using landscape buffers instead.

PL3-2-g. Voluntary Spaces: Provide voluntary space abutting the sidewalk right-of-way for businesses to utilize (ex: cafes, produce markets, street markets, fish vendors, buskers, pop-up shops, etc.).

PL3-2-h. Complete Streets: Encourage a safe, comfortable environment for pedestrians with components of complete streets (ex: wide planter zones, wide sidewalks, and/or building setbacks to allow for usable porches, stoops, and outdoor seating).

PL3-2-i. Porches and Stoops: Porches and stoops are the life of the street. Encourage human activity by providing opportunities for neighbors to connect, walk, and talk together on the sidewalk.

PL3-2-j. Buffer Private Outdoor Spaces: To facilitate usable stoops and patios, and to encourage pedestrian-to-resident interaction, buffer private outdoor spaces from the public sidewalk with low walls, planters and landscape layering that defines the private space yet allows for face to face conversations. Tall 'privacy walls' or fences are not acceptable.

PL3-2-k. Raise Private Stoops Above Sidewalk Grade: If floor levels and site grading allows, the private stoop at residential units should be raised above sidewalk grade, using 30" as an average height, with universal access to the unit included elsewhere.

PL3-2-l. Discourage Recessed Residential Patios: Residential patio levels recessed more than 18" below the adjacent sidewalk grades are discouraged and should be used discerningly, as they can hinder interaction, and may create safety and maintenance issues.

PL4 Active Transportation: Incorporate design features that facilitate active forms of transportation such as walking, bicycling, and use of transit.

PL4-A Entry Locations and Relationships

PL4-A-1. Serving all Modes of Travel: Provide safe and convenient access points for all modes of travel.

PL4-A-2. Connections to All Modes: Site the primary entry in a location that logically relates to building uses and clearly connects all major points of access.

PL4-B Planning Ahead for Bicyclists

PL4-B-1. Early Planning: Consider existing and future bicycle traffic to and through the site early in the process so that access and connections are integrated into the project along with other modes of travel.

PL4-B-2. Bike Facilities: Facilities such as bike racks and storage, bike share stations, shower facilities and lockers for bicyclists should be located to maximize convenience, security, and safety.

PL4-B-3. Bike Connections: Facilitate connections to bicycle trails and infrastructure around and beyond the project.

PL4-C Planning Ahead For Transit

PL4-C-1. Influence on Project Design: Identify how a transit stop (planned or built) adjacent to or near the site may influence project design, provide opportunities for placemaking.

PL4-C-2. On-site Transit Stops: If a transit stop is located onsite, design project-related pedestrian improvements and amenities so that they complement any amenities provided for transit riders.

PL4-C-3. Transit Connections: Where no transit stops are on or adjacent to the site, identify where the nearest transit stops and pedestrian routes are and include design features and connections within the project design as appropriate.

DESIGN CONCEPT

DC1 Project Uses and Activities: Optimize the arrangement of uses and activities on site.

DC1-A Arrangement of Interior Uses

DC1-A-1. Visibility: Locate uses and services frequently used by the public in visible or prominent areas, such as at entries or along the street front.

DC1-A-2. Gathering Places: Maximize the use of any interior or exterior gathering spaces.

DC1-A-3. Flexibility: Build in flexibility so the building can adapt over time to evolving needs, such as the ability to change residential space to commercial space as needed.

DC1-A-4. Views and Connections: Locate interior uses and activities to take advantage of views and physical connections to exterior spaces and uses.

DC1-B Vehicular Access and Circulation

DC1-B-1. Access Location and Design: Choose locations for vehicular access, service uses, and delivery areas that minimize conflict between vehicles and non-motorists wherever possible. Emphasize use of the sidewalk for pedestrians, and create safe and attractive conditions for pedestrians, bicyclists, and drivers.

DC1-B-2. Facilities for Alternative Transportation: Locate facilities for alternative transportation in prominent locations that are convenient and readily accessible to expected users.

DC1-C Parking and Service Uses

DC1-C-1. Below-Grade Parking: Locate parking below grade wherever possible. Where a surface parking lot is the only alternative, locate the parking in rear or side yards, or on lower or less visible portions of the site.

DC1-C-2. Visual Impacts: Reduce the visual impacts of parking lots, parking structures, entrances, and related signs and equipment as much as possible.

DC1-C-3. Multiple Uses: Design parking areas to serve multiple uses such as children’s play space, outdoor gathering areas, sports courts, woonerf, or common space in multifamily projects.

DC1-C-4. Service Uses: Locate and design service entries, loading docks, and trash receptacles away from pedestrian areas or to a less visible portion of the site to reduce possible impacts of these facilities on building aesthetics and pedestrian circulation.

DC2 Architectural Concept: Develop an architectural concept that will result in a unified and functional design that fits well on the site and within its surroundings.

DC2-A Massing

DC2-A-1. Site Characteristics and Uses: Arrange the mass of the building taking into consideration the characteristics of the site and the proposed uses of the building and its open space.

DC2-A-2. Reducing Perceived Mass: Use secondary architectural elements to reduce the perceived mass of larger projects.

DC2-B Architectural and Facade Composition

DC2-B-1. Façade Composition: Design all building facades—including alleys and visible roofs— considering the composition and architectural expression of the building as a whole. Ensure that all facades are attractive and well-proportioned.

DC2-B-2. Blank Walls: Avoid large blank walls along visible façades wherever possible. Where expanses of blank walls, retaining walls, or garage facades are unavoidable, include uses or design treatments at the street level that have human scale and are designed for pedestrians.

DC2-C Secondary Architectural Features

DC2-C-1. Visual Depth and Interest: Add depth to facades where appropriate by incorporating balconies, canopies, awnings, decks, or other secondary elements into the façade design. Add detailing at the street level in order to create interest for the pedestrian and encourage active street life and window shopping (in retail areas).

DC2-C-2. Dual Purpose Elements: Consider architectural features that can be dual purpose— adding depth, texture, and scale as well as serving other project functions.

DC2-C-3. Fit With Neighboring Buildings: Use design elements to achieve a successful fit between a building and its neighbors.

DC2-D Scale and Texture

DC2-D-1. Human Scale: Incorporate architectural features, elements, and details that are of human scale into the building facades, entries, retaining walls, courtyards, and exterior spaces in a manner that is consistent with the overall architectural concept

DC2-D-2. Texture: Design the character of the building, as expressed in the form, scale, and materials, to strive for a fine-grained scale, or “texture,” particularly at the street level and other areas where pedestrians predominate.

DC2-E Form and Function

DC2-E-1. Legibility and Flexibility: Strive for a balance between building use legibility and flexibility. Design buildings such that their primary functions and uses can be readily determined from the exterior, making the building easy to access and understand. At

the same time, design flexibility into the building so that it may remain useful over time even as specific programmatic needs evolve.

Central Area Supplemental Guidance:

DC2-1 Building Layout and Massing

DC2-1-a. Clarify Concepts: Project concepts should be intelligible and clear. Clarity makes knowledge of the design accessible, thus a larger portion of the community will be able to participate in the planning and design process.

DC2-1-b. Engage the Ground Plane: Building design should relate to the earth, using building forms and massing that engage the ground plane, rather than 'float above'. Ground level transparency should still occur on major pedestrian and commercial streets.

DC2-1-c. Encourage Smaller and Varied Building Forms: Smaller and varied building forms are encouraged. Larger building forms should divide their mass up so that it does not appear as one, monolithic building. These breaks in massing and differentiation should take cues from the surrounding fabric. Vertical and horizontal datums and patterns can help provide a guide for how to articulate and break down the overall massing. Modulated façades for large buildings keep the building inviting and consistent with the finer-grain fabric found in the Central Area neighborhood. As such, projects should use 50' – 75' massing widths as a guide for modulation.

DC2-1-d. Relate Scale and Form to the Adjacent Public Realm: Appropriately scale buildings so that they relate to the scale and form of the adjacent public realm (i.e. the width of the streets and/or affronting open spaces and adjacent smaller scale zones).

DC2-1-e. Façade Impacts: Consider all sides of the building and the impacts each façade has on its immediate neighboring context. If building on a slope, consider the project's roofscape as well.

DC2-1-f. Consider Climate: Consider how each façade may respond to climate conditions such as solar shading and prevailing winds.

DC2-1-g. Upper Floor Setbacks: Consider upper floor setbacks along secondary retail zones. In these less dense areas, tall does not always mean urban. Walkable urban places can be achieved at a smaller scale with buildings that have visual texture through their retail frontage, pedestrian scaled signage, tile details, and accented knee walls, as demonstrated by the businesses along Union St, west of 23rd Avenue.

DC2-1-h. Encourage Family-Sized, Ground-Level units: Where compatible with the surrounding streetscape, family sized, ground related apartment units (2 and 3 bedrooms) with usable adjacent open spaces are encouraged.

DC2-1-i. Cluster Small Businesses: Encourage clusters of small and local businesses together.

1. Reduce the scale of commercial façades so that they are conducive to small business tenants.
2. Include commercial spaces with smaller footprints to promote and accommodate local establishments at street level.
3. Set the maximum length of street frontage for individual businesses to be consistent with the existing business character of the area.

4. Where there is not a strong existing character for the area, follow guidance provided in frontage section (PL3-I).

DC3 Open Space Concept: Integrate open space design with the building design so that they complement each other.

DC3-A Building-Open Space Relationship

DC3-A-1. Interior/Exterior Fit: Develop an open space concept in conjunction with the architectural concept to ensure that interior and exterior spaces relate well to each other and support the functions of the development.

DC3-B Open Space Uses and Activities

DC3-B-1. Meeting User Needs: Plan the size, uses, activities, and features of each open space to meet the needs of expected users, ensuring each space has a purpose and function.

DC3-B-2. Matching Uses to Conditions: Respond to changing environmental conditions such as seasonal and daily light and weather shifts through open space design and/or programming of open space activities.

DC3-B-3. Connections to Other Open Space: Site and design project-related open spaces to connect with, or enhance, the uses and activities of other nearby public open space where appropriate.

DC3-B-4. Multifamily Open Space: Design common and private open spaces in multifamily projects for use by all residents to encourage physical activity and social interaction.

DC3-C Design

DC3-C-1. Reinforce Existing Open Space: Where a strong open space concept exists in the neighborhood, reinforce existing character and patterns of street tree planting, buffers or treatment of topographic changes. Where no strong patterns exist, initiate a strong open space concept that other projects can build upon in the future.

DC3-C-2. Amenities/Features: Create attractive outdoor spaces suited to the uses envisioned for the project.

DC3-C-3. Support Natural Areas: Create an open space design that retains and enhances onsite natural areas and connects to natural areas that may exist off-site and may provide habitat for wildlife.

Central Area Supplemental Guidance:

DC3-1 Common Open Spaces

DC3-1-a. Visible and Accessible Common Courtyards: Where possible, provide common courtyards and yards that are publicly visible and accessible. These spaces should be activated and layered, so that there is a graduation from private outdoor space, to the fully shared realm.

DC3-1-b. Delineate Between Shared and Private Spaces: Encourage courtyard housing and bungalow courts which use landscaping as the delineation between shared and private spaces, instead of fencing.

DC3-1-c. Extend the Public Realm: Provide generous common, open space, including shared courtyards and plazas that serve as extensions of the adjacent public realm.

DC4 Exterior Elements and Finishes: Use appropriate and high quality elements and finishes for the building and its open spaces.

DC4-A Exterior Elements and Finishes

DC4-A-1. Exterior Finish Materials: Building exteriors should be constructed of durable and maintainable materials that are attractive even when viewed up close. Materials that have texture, pattern, or lend themselves to a high quality of detailing are encouraged.

DC4-A-2. Climate Appropriateness: Select durable and attractive materials that will age well in Seattle’s climate, taking special care to detail corners, edges, and transitions.

DC4-B Signage

DC4-B-1. Scale and Character: Add interest to the streetscape with exterior signs and attachments that are appropriate in scale and character to the project and its environs.

DC4-B-2. Coordination with Project Design: Develop a signage plan within the context of architectural and open space concepts, and coordinate the details with façade design, lighting, and other project features to complement the project as a whole, in addition to the surrounding context.

DC4-C Lighting

DC4-C-1. Functions: Use lighting both to increase site safety in all locations used by pedestrians and to highlight architectural or landscape details and features such as entries, signs, canopies, plantings, and art.

DC4-C-2. Avoiding Glare: Design project lighting based upon the uses on and off site, taking care to provide illumination to serve building needs while avoiding off-site night glare and light pollution.

DC4-D Trees, Landscape, and Hardscape Materials

DC4-D-1. Choice of Plant Materials: Reinforce the overall architectural and open space design concepts through the selection of landscape materials.

DC4-D-2. Hardscape Materials: Use exterior courtyards, plazas, and other hard surfaced areas as an opportunity to add color, texture, and/or pattern and enliven public areas through the use of distinctive and durable paving materials. Use permeable materials wherever possible.

DC4-D-3. Long Range Planning: Select plants that upon maturity will be of appropriate size, scale, and shape to contribute to the site as intended.

DC4-D-4. Place Making: Create a landscape design that helps define spaces with significant elements such as trees.

DC4-E Project Assembly and Lifespan

DC4-E-1. Deconstruction: When possible, design the project so that it may be deconstructed at the end of its useful lifetime, with connections and assembly techniques that will allow reuse of materials.

Central Area Supplemental Guidance:

DC4-1 Screening

DC4-1-a. Artistic Opportunity: When screening or fencing is used, it should be designed as an artistic opportunity.

DC4-1-b. Allow for Views: Design screening height, porosity, and materials to allow for views in and out of the site, and visual interaction with the public realm.

DC4-2 Building Materials

DC4-2-a. Reinforce Local Cultural References: Consider vibrant and bold uses of color, materials, texture, and light to reinforce local cultural references.

DC4-2-b. Variation and High-Quality Materials: Encourage variation in building materials and employ high quality materials.

DC4-2-c. Reuse Building Materials: Salvage building materials from the site when possible. If reusable materials, such as brick, are removed from demolished buildings, use them in the new development as visible building components.

DC4-3 Building Details and Elements

DC4-3-a. Natural Ventilation: Provide operable windows in a way that promotes natural ventilation.

DC4-3-b. Reflect Human Scale and Craftmanship: Incorporate building materials and details that reflect human scale and the craftsmanship of the building process (ex: use of brick or wood for exterior cladding).

DC4-3-c. Add Human Scale and Façade Texture: Incorporate elements such as bay windows, columns, and deep awnings which add human scale and façade texture.

DC4-3-d. Exhibit Rhythm and Transparency: Façades should exhibit a rhythm of fenestration, and transparency of the inside program out to the public realm.

Central Area Supplemental Guidance:

A.1-1 History and Heritage

A.1-1-a. Express African and Black American Presence: Provide design features to express the African and Black American presence within the neighborhood. Create 'pockets of culture' to represent both the Black American identity within the Central Area, as well as other heritages that have had a large impact on the Central Area's past.

A.1-1-b. Include Visual Arts in the Design Concept: Consider including visual arts as an integral part of the design concept along main street building façades, within highly trafficked pedestrian areas, and within open spaces.

A.1-1-c. Cover Blank Walls with Art: Use any resulting blank walls and surfaces for the visible expression of art that references the history, heritage, and culture of the community.

A.1-1-d. Interpretive Storytelling: Include interpretive opportunities (through visual art, signage, markers, etc.) that tell the story of the neighborhood's history in engaging ways.

A.1-1-e. Reflect Racial, Economical and Multi-Generational Character: Encourage the building design to reflect the racial, economical, and multi-generational character of the community.

A.1-1-f. Support the Black Veteran Community: Developments are encouraged to provide housing and/or amenities for the Black Veteran community.

A.1-1-g. Local Activities and Interests: Provide amenities appropriate to the activities and interests of the local community, such as basketball hoops, chess boards, tot lots and other family oriented activities.

A.1-1-h. Encourage Bicycle Use and Parking: Bicycle use and parking should be encouraged to promote a healthy and active neighborhood and to support local businesses. Bicycle racks should be plentiful, and either be from the Seattle Department of Transportation's bike parking program or be an approved rack of similar "inverted U" or "staple" style. The bicycle racks may also be an opportunity for placemaking, such as having a uniform color for bike racks within the Central District or having distinctive place-names designed into the racks.

A.1-2 For 23rd and Union Character Area

A.1-2-a. Community Characteristics: Community characteristics that are unique to this area include:

1. A cohesive neighborhood grain with historic character that establishes the area as a destination for the surrounding community.
2. An established, pedestrian-scaled neighborhood-commercial area, with a mix of both commercial and residential uses, grounded by locally-owned businesses and institutions.
3. Hub of the African and Black American community.
4. Diverse range of shops, restaurants, entertainment, and places of worship. Specific buildings to note are the Central Cinema (1411 21st Ave) and Katy's Cafe (2000 E Union St).

A.1-2-b. Provide Accessible Open Space and Community Gathering Opportunities: In this area it is especially important to provide additional accessible open space and community gathering opportunities, for example plazas adjacent to the public sidewalks.

A.1-3 For 23rd and Cherry Character Area

A.1-3-a. Community Characteristics: Community characteristics that are unique to this area include:

1. Smaller-scaled fabric with many culturally specific restaurants, as well as community and youth-centered resources.
2. Specific places to note are Garfield High School (400 23rd Ave), Garfield Community Center (2323 E Cherry St), Quincy Jones Performing Arts Center (400 23rd Ave), Medgar Evers Pool (500 23rd Ave), and Eritrean Community Center (2402 E Spruce St).

A.1-4 For 23rd and Jackson Character Area

A.1-4-a. Community Characteristics: Community characteristics that are unique to this area include:

1. Larger-scale, mixed-use commercial district with opportunities for startups, and both large and small scaled businesses.
2. Both a local and regional destination due to its commercial developments, social services, community assets, and shops for daily household needs.
3. Specific places to note are the Pratt Fine Arts Center (1902 S Main St), Wood Technology Center (2310 S Lane St), Seattle Vocational Institute (2120 S Jackson St), Langston Hughes Performing Arts Institute (104 17th Ave S), and Douglass Truth Library (2300 E Yesler Way).

Central Area Supplemental Guidance:

A.2-1 Cultural Placemakers

A.2-1-a. Emphasize Cultural Placemakers: Emphasize Cultural Placemakers within the community. The Cultural Placemaker map identifies several key intersections in the Central Area that serve as cultural anchors for their surrounding areas. Projects at these corner locations should stimulate activities and create visual interest to enhance the Central Area's identity and a sense of arrival, such as:

1. Providing street furniture, public art, landscape elements, pedestrian lighting, mosaics, varied paving patterns, etc.
2. Creating façade enhancements at prominent building corners.
3. Creating a building layout and setbacks that provide opportunities for open space that expand the usable space beyond the width of the sidewalks.
4. Providing larger landscape buffers at placemakers along heavier trafficked streets.

RECOMMENDATIONS

At the conclusion of the RECOMMENDATION meeting, the Board recommended approval of the project with no conditions.

The recommendation summarized above was based on the design review packet dated Thursday, February 06, 2020, and the materials shown and verbally described by the applicant at the Thursday, February 06, 2020 Design Recommendation meeting. After considering the site and context, hearing public comment, reconsidering the previously identified design priorities and reviewing the materials, the four Design Review Board members recommended APPROVAL of the subject design and departures with no conditions.