



City of Seattle

Department of Construction and Inspections
Nathan Torgelson, Director

DESIGN
REVIEW

EARLY DESIGN GUIDANCE OF THE WEST DESIGN REVIEW BOARD

Project Number: 3026512

Address: 117 Yale Ave N

Applicant: Jeff Williams

Date of Meeting: Wednesday, November 01, 2017

Board Members Present: Christine Harrington (Chair)
Homero Nishiwaki
Patreese Martin
Stephen Porter
Brian Walters

SDCI Staff Present: Beth Hartwick, Senior Land Use Planner

SITE & VICINITY

Site Zone: SM-SLU 240/125-440

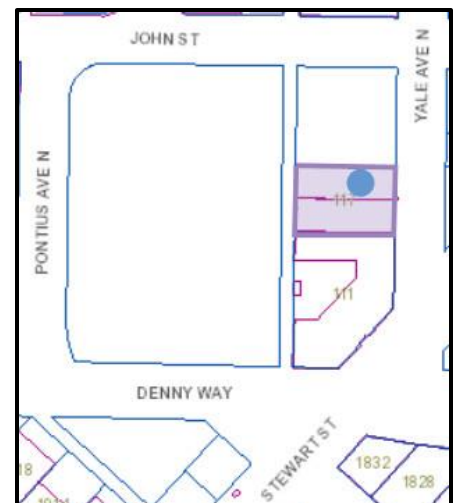
Nearby Zones: (North) SM-SLU/R 65/95
(South) DMC 240/290-440
(East) SM-SLU 240/125-440
(West) SM-SLU 240/125-440

Lot Area: 9,600 sq. ft.

Current Development: Two-story commercial structure built in 1927.

Access: The site has street frontage along Yale Ave N and an improved alley.

Environmentally Critical Areas: None



Surrounding Development and Neighborhood Character: The site is located two blocks west of I-5 at the southeast edge of South Lake Union in the Cascade neighborhood. Nearby residential and office development over the past ten years along with REI's flagship store located one block to the north, have added pedestrian/vehicle activity to the surrounding area.

The site directly to the south has a six story residential building with retail at grade that was constructed in 2000. Across the alley to the west, Seattle City Light is constructing a substation. The vacant parcel to the north has been acquired by City Light for construction of the substation. Across Yale Ave N. are two small surface parking lots.

PROJECT DESCRIPTION:

At the time of the EDG meeting, the proposal was for a 10-story hotel containing approx. 175 rooms. No parking will be provided.

The design packet includes information presented at the meeting, and is available online by entering the project number at this website:

<http://www.seattle.gov/DPD/aboutus/news/events/DesignReview/SearchPastReviews/default.aspx>

The packet is also available to view in the file, by contacting the Public Resource Center at SDCI:

Mailing Public Resource Center
Address: 700 Fifth Ave., Suite 2000
P.O. Box 34019
Seattle, WA 98124-4019

Email: PRC@seattle.gov

EARLY DESIGN GUIDANCE November 1, 2017

PUBLIC COMMENT

The following public comments were offered at this meeting:

- Encouraged a through block connection as part of the development.

One purpose of the design review process is for the Board and City to receive comments from the public that help to identify feedback and concerns about the site and design concept, identify applicable citywide and neighborhood design guidelines of highest priority to the site and explore conceptual design, siting alternatives and eventual architectural design.

All public comments submitted in writing for this project can be viewed using the following link and entering the project number: <http://web6.seattle.gov/dpd/edms/>

PRIORITIES & BOARD RECOMMENDATIONS

After visiting the site, considering the analysis of the site and context provided by the proponents, and hearing public comment, the Design Review Board members provided the following siting and design guidance.

1. **Massing:** The Board agreed that the design team should proceed with the preferred Option 3. In critique of the Yale St façade, they expressed that the symmetry as shown reinforced a perceived weight of the massing. The Board gave guidance that the massing should be broken down at the upper levels, with either modulation or articulation and through the use of materiality. The Board noted that as the alley side will be visible above the City Light substation, both the front and back facades are important. (CS2-B-1, DC2-B-1, DC2-C-2) The following guidance was given:
 - a. Simplify and break down the weight of the Yale St. façade with less symmetry, and either more modulation of 5' or greater, or articulation through the use of materiality. (DC2-B-1, DC4-A-1)
 - b. Design the alley façade with as much care as the Yale St. façade. (CS2-B-1)
 - c. Maintain the location of the roof top amenity features. (DC2-I-i, DC3-C-2)
 - d. Blank walls at the interior lot lines are acceptable, given current and potential future development on the adjacent sites. (DC2-B-2)

2. **Ground Level Design:** The Board felt strongly that pedestrian access into the ground level should occur from both Yale St and the alley, and that the north lightwell should not extend to the below grade level but should stop at the ground level, creating a "courtyard". This courtyard should provide the illusion of a through block connection and have a connection to and support the market function along Yale St. (CS2-B-2, PL3-C-1, DC3-A-1, DC3-B-1) The following guidance was given:
 - a. Provide a pedestrian entry into the ground level from the alley. (CS2-B-2, DC3-A-1)
 - b. Stop the north light well at the ground level. (DC3-A-1, DC3-B-1)
 - c. Explore a design with the courtyard area below the lightwell to be partially open and partially covered. (DC3-A-1, DC3-C-2)
 - d. Refine the circulation path through the structure to connect the two entries to the courtyard below the lightwell and the market space. (PL3-C-1, DC3-A-1)
 - e. Maintain the north corner market space along Yale St to provide a street presence as future development to the north is unknown. (CS2-B-2)
 - f. The canted entry façade along Yale St. is acceptable. (PL3-A-4)
 - g. The Board supported the reduced length of 25' at the loading zone. (DC1-B-1)

For the Recommendation Meeting:

- Provide a view from potential height of future surrounding development

DEVELOPMENT STANDARD DEPARTURES

The Board's recommendation on the requested departure(s) will be based on the departure's potential to help the project better meet these design guidelines priorities and achieve a better overall project design than could be achieved without the departure(s). The Board's recommendation will be reserved until the final Board meeting.

At the time of the Early Design Guidance no departures were requested.

DESIGN REVIEW GUIDELINES

The priority Citywide and Neighborhood guidelines identified as Priority Guidelines are summarized below, while all guidelines remain applicable. For the full text please visit the [Design Review website](#).

CONTEXT & SITE

CS1 Natural Systems and Site Features: Use natural systems/features of the site and its surroundings as a starting point for project design.

CS1-B Sunlight and Natural Ventilation

CS1-B-2. Daylight and Shading: Maximize daylight for interior and exterior spaces and minimize shading on adjacent sites through the placement and/or design of structures on site.

CS1-B-3. Managing Solar Gain: Manage direct sunlight falling on south and west facing facades through shading devices and existing or newly planted trees.

South Lake Union Supplemental Guidance:

CS1-I Responding To Site Characteristics

CS1-I-i. Sustainable Design: New development is encouraged to take advantage of site configuration to accomplish sustainability goals. The Board is generally willing to recommend departures from development standards if they are needed to achieve sustainable design. Refer to the Leadership in Energy and Environmental Design* (LEED) manual which provides additional information.

CS2 Urban Pattern and Form: Strengthen the most desirable forms, characteristics, and patterns of the streets, block faces, and open spaces in the surrounding area.

CS2-A Location in the City and Neighborhood

CS2-A-1. Sense of Place: Emphasize attributes that give a distinctive sense of place. Design the building and open spaces to enhance areas where a strong identity already exists, and create a sense of place where the physical context is less established.

CS2-B Adjacent Sites, Streets, and Open Spaces

CS2-B-1. Site Characteristics: Allow characteristics of sites to inform the design, especially where the street grid and topography create unusually shaped lots that can add distinction to the building massing.

CS2-B-2. Connection to the Street: Identify opportunities for the project to make a strong connection to the street and public realm.

CS2-B-3. Character of Open Space: Contribute to the character and proportion of surrounding open spaces.

CS2-C Relationship to the Block

CS2-C-2. Mid-Block Sites: Look to the uses and scales of adjacent buildings for clues about how to design a mid-block building. Continue a strong street-edge and respond to datum lines of adjacent buildings at the first three floors.

CS2-D Height, Bulk, and Scale

CS2-D-5. Respect for Adjacent Sites: Respect adjacent properties with design and site planning to minimize disrupting the privacy of residents in adjacent buildings.

CS3 Architectural Context and Character: Contribute to the architectural character of the neighborhood.

CS3-A Emphasizing Positive Neighborhood Attributes

CS3-A-1. Fitting Old and New Together: Create compatibility between new projects, and existing architectural context, including historic and modern designs, through building articulation, scale and proportion, roof forms, detailing, fenestration, and/or the use of complementary materials.

CS3-A-2. Contemporary Design: Explore how contemporary designs can contribute to the development of attractive new forms and architectural styles; as expressed through use of new materials or other means.

CS3-A-3. Established Neighborhoods: In existing neighborhoods with a well-defined architectural character, site and design new structures to complement or be compatible with the architectural style and siting patterns of neighborhood buildings.

CS3-A-4. Evolving Neighborhoods: In neighborhoods where architectural character is evolving or otherwise in transition, explore ways for new development to establish a positive and desirable context for others to build upon in the future.

CS3-B Local History and Culture

CS3-B-1. Placemaking: Explore the history of the site and neighborhood as a potential placemaking opportunity. Look for historical and cultural significance, using neighborhood groups and archives as resources.

CS3-B-2. Historical/Cultural References: Reuse existing structures on the site where feasible as a means of incorporating historical or cultural elements into the new project.

South Lake Union Supplemental Guidance:

CS3-I Height, Bulk, and Scale Compatibility

CS3-I-i. Facade Articulation: Articulate the building facades vertically or horizontally in intervals that relate to the existing structures or existing pattern of development in the vicinity.

CS3-I-ii. Reduce Visual Bulk: Consider using architectural features to reduce building scale such as:

- a. landscaping;
- b. trellis;
- c. complementary materials;
- d. detailing;
- e. accent trim.

CS3-II Architectural Context

CS3-II-i. Mix of Building Style: Support the existing fine-grained character of the neighborhood with a mix of building styles.

CS3-II-ii. Preservation: Re-use and preserve important buildings and landmarks when possible.

CS3-II-iii. Historic Signage: Expose historic signs and vintage advertising on buildings where possible.

CS3-II-iv. Historic Aesthetic: Respond to the history and character in the adjacent vicinity in terms of patterns, style, and scale. Encourage historic character to be revealed and reclaimed, for example through use of community artifacts, and historic materials, forms and textures.

CS3-II-v. Industrial Character: Respond to the working class, maritime, commercial and industrial character of the Waterfront and Westlake areas. Examples of elements to consider include:

- a. window detail patterns;
- b. open bay doors;
- c. sloped roofs.

CS3-II-vi. Cascade Character: Respond to the unique, grass roots, sustainable character of the Cascade neighborhood. Examples of elements to consider include:

- a. community artwork;
- b. edible gardens;
- c. water filtration systems that serve as pedestrian amenities;
- d. gutters that support greenery.

PUBLIC LIFE

PL1 Connectivity: Complement and contribute to the network of open spaces around the site and the connections among them.

PL1-A Network of Open Spaces

PL1-A-1. Enhancing Open Space: Design the building and open spaces to positively contribute to a broader network of open spaces throughout the neighborhood.

PL1-A-2. Adding to Public Life: Seek opportunities to foster human interaction through an increase in the size and quality of project-related open space available for public life.

PL1-B Walkways and Connections

PL1-B-1. Pedestrian Infrastructure: Connect on-site pedestrian walkways with existing public and private pedestrian infrastructure, thereby supporting pedestrian connections within and outside the project.

PL1-B-2. Pedestrian Volumes: Provide ample space for pedestrian flow and circulation, particularly in areas where there is already heavy pedestrian traffic or where the project is expected to add or attract pedestrians to the area.

PL1-B-3. Pedestrian Amenities: Opportunities for creating lively, pedestrian oriented open spaces to enliven the area and attract interest and interaction with the site and building should be considered.

PL1-C Outdoor Uses and Activities

PL1-C-1. Selecting Activity Areas: Concentrate activity areas in places with sunny exposure, views across spaces, and in direct line with pedestrian routes.

South Lake Union Supplemental Guidance:

PL1-I Human Activity

PL1-I-i. Open Connections: Keep neighborhood connections open, and discourage closed campuses.

PL1-I-ii. Pedestrian Network: Reinforce pedestrian connections both within the neighborhood and to other adjacent neighborhoods. Transportation infrastructure should be designed with adjacent sidewalks, as development occurs to enhance pedestrian connectivity.

PL1-I-iii. Lighting: Design for a network of safe and well-lit connections to encourage human activity and link existing high activity areas.

PL1-II Landscaping To Reinforce Design Continuity With Adjacent Sites

PL1-II-i. Spatial Hierarchy: Support the creation of a hierarchy of passive and active open space within South Lake Union. This may include pooling open space requirements onsite to create larger spaces.

PL1-III Pedestrian Open Spaces and Entrances

PL1-III-i. Public Realm Amenity: New developments are encouraged to work with the Design Review Board and interested citizens to provide features that enhance the public realm, i.e. the transition zone between private property and the public right of way. The Board is generally willing to consider a departure in open space requirements if the project proponent provides an acceptable plan for features such as:

- a. curb bulbs adjacent to active retail spaces where they are not interfering with primary corridors that are designated for high levels of traffic flow;
- b. pedestrian-oriented street lighting;
- c. street furniture.

PL2 Walkability: Create a safe and comfortable walking environment that is easy to navigate and well-connected to existing pedestrian walkways and features.

PL2-B Safety and Security

PL2-B-1. Eyes on the Street: Create a safe environment by providing lines of sight and encouraging natural surveillance.

PL2-B-2. Lighting for Safety: Provide lighting at sufficient lumen intensities and scales, including pathway illumination, pedestrian and entry lighting, and/or security lights.

PL2-B-3. Street-Level Transparency: Ensure transparency of street-level uses (for uses such as nonresidential uses or residential lobbies), where appropriate, by keeping views open into spaces behind walls or plantings, at corners, or along narrow passageways.

PL2-C Weather Protection

PL2-C-1. Locations and Coverage: Overhead weather protection is encouraged and should be located at or near uses that generate pedestrian activity such as entries, retail uses, and transit stops.

PL2-C-2. Design Integration: Integrate weather protection, gutters and downspouts into the design of the structure as a whole, and ensure that it also relates well to neighboring buildings in design, coverage, or other features.

PL2-C-3. People-Friendly Spaces: Create an artful and people-friendly space beneath building.

South Lake Union Supplemental Guidance:

PL2-I Streetscape Compatibility

PL2-I-i. Street Level Uses: Encourage provision of spaces for street level uses that vary in size, width, and depth. Encourage the use of awnings and weather protection along street fronts to enhance the pedestrian environment.

PL1-I-ii. Streetscape Amenities: Provide pedestrian-friendly streetscape amenities

- a. tree grates;
- b. benches;
- c. lighting.

PL1-I-iii. Sidewalk Retail: Where appropriate, configure retail space so that it can spill-out onto the sidewalk (retaining six feet for pedestrian movement, where the sidewalk is sufficiently wide).

PL2-II Personal Safety and Security

PL2-II-i. All-Day Activity: Enhance public safety throughout the neighborhood to foster 18-hour public activity. Methods to consider are:

- a. enhanced pedestrian and street lighting;
- b. well-designed public spaces that are defensively designed with clear sight lines and opportunities for eyes on the street.

PL3 Street-Level Interaction: Encourage human interaction and activity at the street-level with clear connections to building entries and edges.

PL3-A Entries

PL3-A-1. Design Objectives: Design primary entries to be obvious, identifiable, and distinctive with clear lines of sight and lobbies visually connected to the street.

PL3-A-2. Common Entries: Multi-story residential buildings need to provide privacy and security for residents but also be welcoming and identifiable to visitors.

PL3-A-3. Individual Entries: Ground-related housing should be scaled and detailed appropriately to provide for a more intimate type of entry.

PL3-A-4. Ensemble of Elements: Design the entry as a collection of coordinated elements including the door(s), overhead features, ground surface, landscaping, lighting, and other features.

PL3-C Retail Edges

PL3-C-1. Porous Edge: Engage passersby with opportunities to interact visually with the building interior using glazing and transparency. Create multiple entries where possible and make a physical and visual connection between people on the sidewalk and retail activities in the building.

PL3-C-2. Visibility: Maximize visibility into the building interior and merchandise displays. Consider fully operational glazed wall-sized doors that can be completely opened to the street, increased height in lobbies, and/or special lighting for displays.

PL3-C-3. Ancillary Activities: Allow space for activities such as sidewalk vending, seating, and restaurant dining to occur. Consider setting structures back from the street or incorporating space in the project design into which retail uses can extend.

South Lake Union Supplemental Guidance:

PL3-I Streetscape Compatibility

PL3-I-i. Retail Location: Where appropriate, consider a reduction in the required amount of commercial and retail space at the ground level, such as in transition zones between commercial and residential areas. Place retail in areas that are conducive to the use and will be successful.

PL3-II Human Activity

PL3-II-i. Public/Private Transition: Create graceful transitions at the streetscape level between the public and private uses.

PL3-II-ii. Active Facades: Design facades to encourage activity to spill out from business onto the sidewalk, and vice-versa.

PL3-II-iii. Coordinate Retail/Pedestrian Activity: Reinforce retail concentrations with compatible spaces that encourage pedestrian activity.

PL3-II-iv. Activity Clusters: Create businesses and community activity clusters through colocation of retail and pedestrian uses as well as other high pedestrian traffic opportunities.

DESIGN CONCEPT

DC1 Project Uses and Activities: Optimize the arrangement of uses and activities on site.

DC1-A Arrangement of Interior Uses

DC1-A-1. Visibility: Locate uses and services frequently used by the public in visible or prominent areas, such as at entries or along the street front.

DC1-A-2. Gathering Places: Maximize the use of any interior or exterior gathering spaces.

DC1-A-3. Flexibility: Build in flexibility so the building can adapt over time to evolving needs, such as the ability to change residential space to commercial space as needed.

DC1-A-4. Views and Connections: Locate interior uses and activities to take advantage of views and physical connections to exterior spaces and uses.

DC1-B Vehicular Access and Circulation

DC1-B-1. Access Location and Design: Choose locations for vehicular access, service uses, and delivery areas that minimize conflict between vehicles and non-motorists wherever possible. Emphasize use of the sidewalk for pedestrians, and create safe and attractive conditions for pedestrians, bicyclists, and drivers.

DC1-C Parking and Service Uses

DC1-C-4. Service Uses: Locate and design service entries, loading docks, and trash receptacles away from pedestrian areas or to a less visible portion of the site to reduce possible impacts of these facilities on building aesthetics and pedestrian circulation.

DC2 Architectural Concept: Develop an architectural concept that will result in a unified and functional design that fits well on the site and within its surroundings.

DC2-A Massing

DC2-A-2. Reducing Perceived Mass: Use secondary architectural elements to reduce the perceived mass of larger projects.

DC2-B Architectural and Facade Composition

DC2-B-1. Façade Composition: Design all building facades—including alleys and visible roofs— considering the composition and architectural expression of the building as a whole. Ensure that all facades are attractive and well-proportioned.

DC2-B-2. Blank Walls: Avoid large blank walls along visible façades wherever possible. Where expanses of blank walls, retaining walls, or garage facades are unavoidable, include uses or design treatments at the street level that have human scale and are designed for pedestrians.

DC2-C Secondary Architectural Features

DC2-C-1. Visual Depth and Interest: Add depth to facades where appropriate by incorporating balconies, canopies, awnings, decks, or other secondary elements into the façade design. Add detailing at the street level in order to create interest for the pedestrian and encourage active street life and window shopping (in retail areas).

DC2-C-2. Dual Purpose Elements: Consider architectural features that can be dual purpose— adding depth, texture, and scale as well as serving other project functions.

DC2-C-3. Fit With Neighboring Buildings: Use design elements to achieve a successful fit between a building and its neighbors.

DC2-D Scale and Texture

DC2-D-1. Human Scale: Incorporate architectural features, elements, and details that are of human scale into the building facades, entries, retaining walls, courtyards, and exterior spaces in a manner that is consistent with the overall architectural concept

DC2-D-2. Texture: Design the character of the building, as expressed in the form, scale, and materials, to strive for a fine-grained scale, or “texture,” particularly at the street level and other areas where pedestrians predominate.

DC2-E Form and Function

DC2-E-1. Legibility and Flexibility: Strive for a balance between building use legibility and flexibility. Design buildings such that their primary functions and uses can be readily determined from the exterior, making the building easy to access and understand. At the same time, design flexibility into the building so that it may remain useful over time even as specific programmatic needs evolve.

South Lake Union Supplemental Guidance:

DC2-I Architectural Concept and Consistency

DC2-I-i. Roofscape Design: Design the “fifth elevation” — the roofscape — in addition to the streetscape. As this area topographically is a valley, the roofs may be viewed from locations outside the neighborhood such as the freeway and Space Needle. Therefore, views from outside the area as well as from within the neighborhood should be considered, and roof-top elements should be organized to minimize view impacts from the freeway and elevated areas.

DC3 Open Space Concept: Integrate open space design with the building design so that they complement each other.

DC3-A Building-Open Space Relationship

DC3-A-1. Interior/Exterior Fit: Develop an open space concept in conjunction with the architectural concept to ensure that interior and exterior spaces relate well to each other and support the functions of the development.

DC3-B Open Space Uses and Activities

DC3-B-1. Meeting User Needs: Plan the size, uses, activities, and features of each open space to meet the needs of expected users, ensuring each space has a purpose and function.

DC3-B-2. Matching Uses to Conditions: Respond to changing environmental conditions such as seasonal and daily light and weather shifts through open space design and/or programming of open space activities.

DC3-B-3. Connections to Other Open Space: Site and design project-related open spaces to connect with, or enhance, the uses and activities of other nearby public open space where appropriate.

DC3-C Design

DC3-C-1. Reinforce Existing Open Space: Where a strong open space concept exists in the neighborhood, reinforce existing character and patterns of street tree planting, buffers or treatment of topographic changes. Where no strong patterns exist, initiate a strong open space concept that other projects can build upon in the future.

DC3-C-2. Amenities/Features: Create attractive outdoor spaces suited to the uses envisioned for the project.

DC3-C-3. Support Natural Areas: Create an open space design that retains and enhances onsite natural areas and connects to natural areas that may exist off-site and may provide habitat for wildlife.

South Lake Union Supplemental Guidance:

DC3-I Landscaping To Reinforce Design Continuity With Adjacent Sites

DC3-I-i. Sustainable Landscaping: Encourage landscaping that meets LEED criteria. This is a priority in the Cascade neighborhood.

DC3-I-ii. Native Vegetation: Where appropriate, install indigenous trees and plants to improve aesthetics, capture **water and create habitat**.

DC3-I-v. Lighting: Reference the City of Seattle Right Tree Book and the City Light Streetscape Light Standards Manual for appropriate landscaping and lighting options for the area.

DC3-II Landscaping To Enhance The Building and/or Site

DC3-II-i. Integrated Artwork: Consider integrating artwork into publicly accessible areas of a building and landscape that evokes a sense of place related to the previous uses of the area. Neighborhood themes may include service industries such as laundries, auto row, floral businesses, photography district, arts district, maritime, etc.

DC3-III Landscape Design To Address Special Site Conditions

DC3-III-i. View Orientation: Landscaping should be designed to take advantage of views to waterfront and downtown Seattle.

DC4 Exterior Elements and Finishes: Use appropriate and high quality elements and finishes for the building and its open spaces.

DC4-A Exterior Elements and Finishes

DC4-A-1. Exterior Finish Materials: Building exteriors should be constructed of durable and maintainable materials that are attractive even when viewed up close. Materials that have texture, pattern, or lend themselves to a high quality of detailing are encouraged.

DC4-A-2. Climate Appropriateness: Select durable and attractive materials that will age well in Seattle’s climate, taking special care to detail corners, edges, and transitions.

DC4-B Signage

DC4-B-1. Scale and Character: Add interest to the streetscape with exterior signs and attachments that are appropriate in scale and character to the project and its environs.

DC4-B-2. Coordination with Project Design: Develop a signage plan within the context of architectural and open space concepts, and coordinate the details with façade design, lighting, and other project features to complement the project as a whole, in addition to the surrounding context.

DC4-C Lighting

DC4-C-1. Functions: Use lighting both to increase site safety in all locations used by pedestrians and to highlight architectural or landscape details and features such as entries, signs, canopies, plantings, and art.

DC4-C-2. Avoiding Glare: Design project lighting based upon the uses on and off site, taking care to provide illumination to serve building needs while avoiding off-site night glare and light pollution.

DC4-D Trees, Landscape, and Hardscape Materials

DC4-D-1. Choice of Plant Materials: Reinforce the overall architectural and open space design concepts through the selection of landscape materials.

DC4-D-2. Hardscape Materials: Use exterior courtyards, plazas, and other hard surfaced areas as an opportunity to add color, texture, and/or pattern and enliven public areas through the use of distinctive and durable paving materials. Use permeable materials wherever possible.

DC4-D-3. Long Range Planning: Select plants that upon maturity will be of appropriate size, scale, and shape to contribute to the site as intended.

DC4-D-4. Place Making: Create a landscape design that helps define spaces with significant elements such as trees.

BOARD DIRECTION

At the conclusion of the EARLY DESIGN GUIDANCE meeting, the Board recommended moving forward to MUP application.