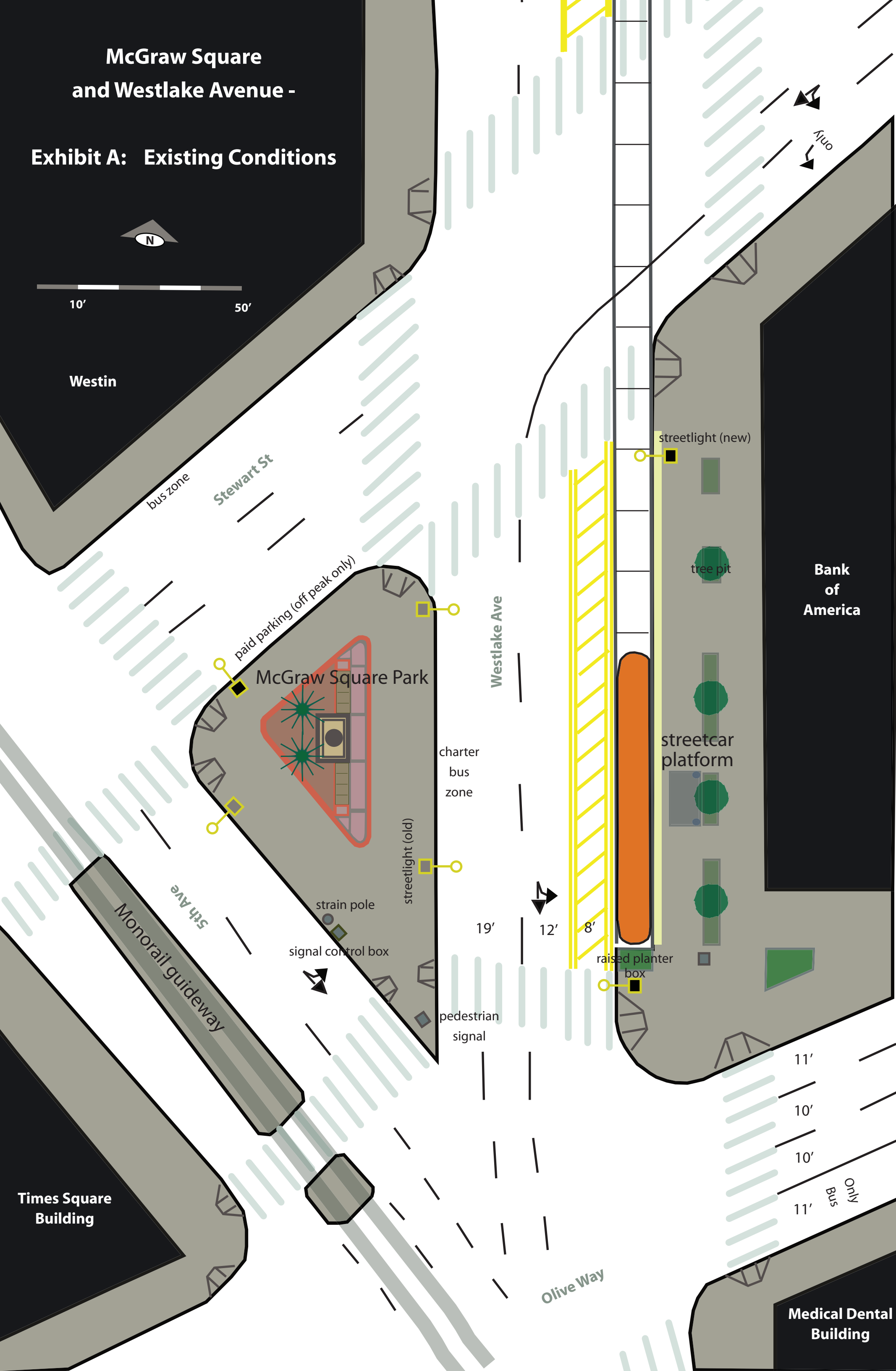


McGraw Square
and Westlake Avenue -

Exhibit A: Existing Conditions



"McGraw Streetcar Plaza at Westlake / Times Square"

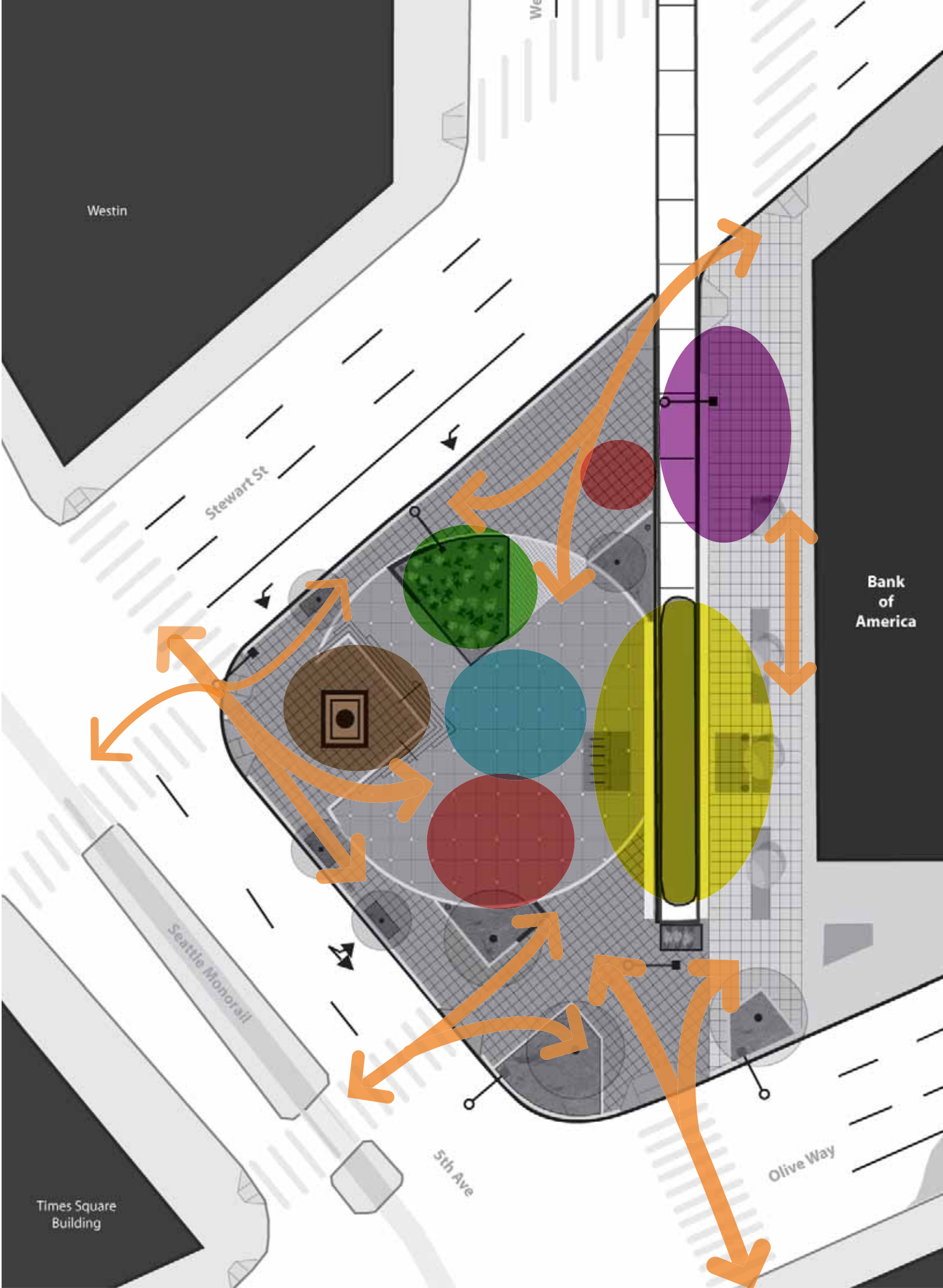
Exhibit B: Proposed Conditions

Key Elements

- 1 Dark concrete plaza surface
- 2 New steps with statue uplighting
- 3 Illuminated seat wall
- 4 Lowered raingarden with 6" curb
- 5 Granite paver detail
- 6 Utility/water connections for vending
- 7 Colored LED light tiles (inlaid)
- 8 Landscape bed with plantings*
- 9 4'x8' tree pit*
- 10 New streetcar platform; integrated shelter/covered bicycle parking

*Specific landscape plan to be determined closer to construction





Bicycle Parking

Plaza Raingarden

**Plaza Steps /
Historic Statue**

Artistic Lighting

**Streetcar
Platforms**

**Vending / Events
Programming**

Pedestrian Flows

“McGraw Streetcar Plaza at Times Square”

Proposed Program

- Site anchored by historic statue, streetcar, and large raingarden with larger trees at south edge
- Activation a high priority, including retail/ vending, transit amenities, and bicycle parking
- Flexible design that can easily absorb future facilities, complex pedestrian circulation

Plaza designed to accommodate future retail kiosk and stand-alone secure bicycle storage facility



As proposed, plaza allows space for mobile food vending and/or events programming (e.g. holiday gatherings, food markets)

Perspectives

*Looking south along
Fifth Avenue from
Westin Hotel*



*Looking down to plaza
from Seattle Monorail/
Times Square Building*



**Shown with potential future
secure bike parking facility on
east side of streetcar tracks*

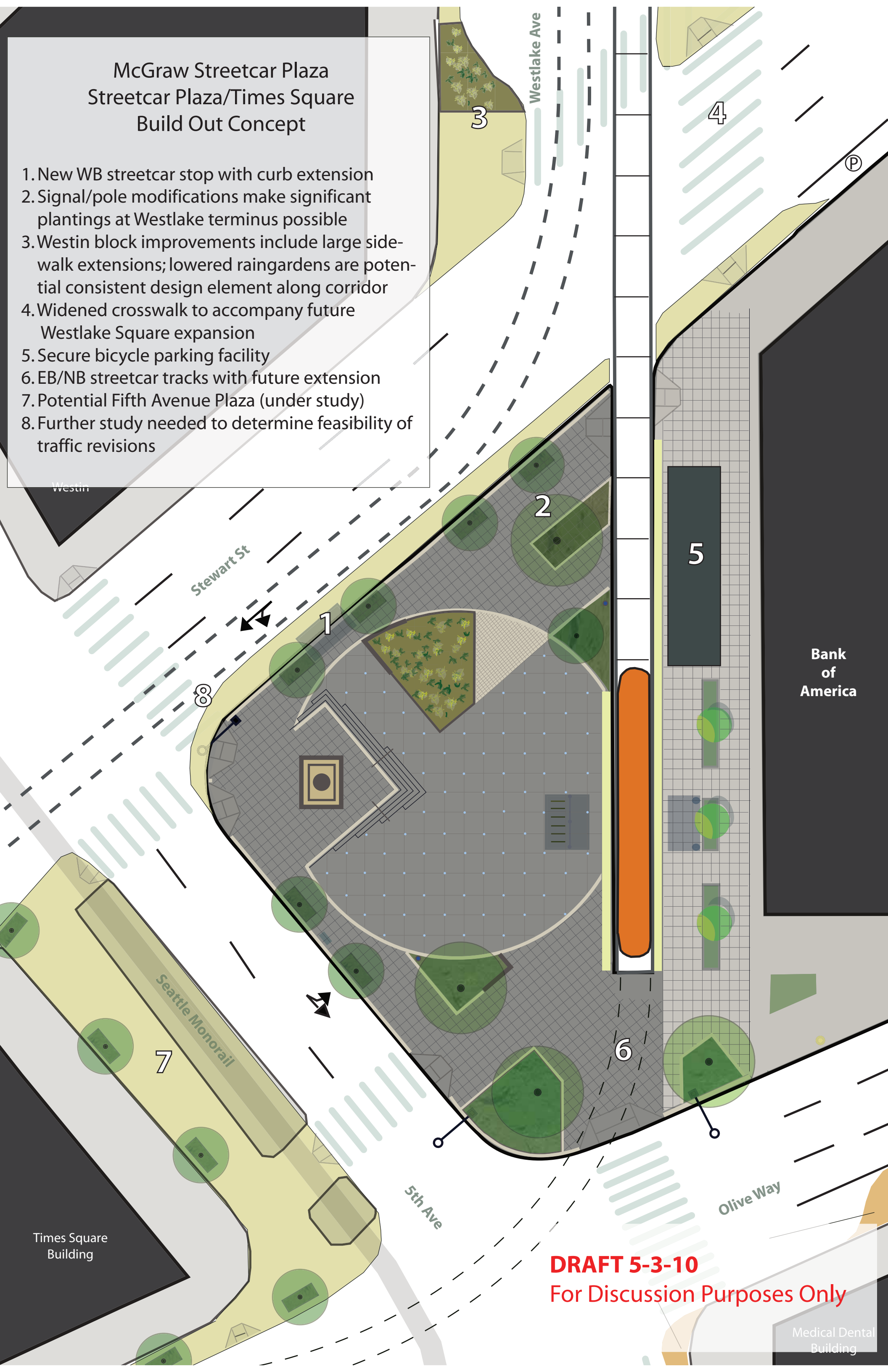
*Looking west along
Stewart Street*



** Shown with mobile food
vending activities*

McGraw Streetcar Plaza Streetcar Plaza/Times Square Build Out Concept

- 1. New WB streetcar stop with curb extension
- 2. Signal/pole modifications make significant plantings at Westlake terminus possible
- 3. Westin block improvements include large sidewalk extensions; lowered raingardens are potential consistent design element along corridor
- 4. Widened crosswalk to accompany future Westlake Square expansion
- 5. Secure bicycle parking facility
- 6. EB/NB streetcar tracks with future extension
- 7. Potential Fifth Avenue Plaza (under study)
- 8. Further study needed to determine feasibility of traffic revisions



DRAFT 5-3-10
For Discussion Purposes Only