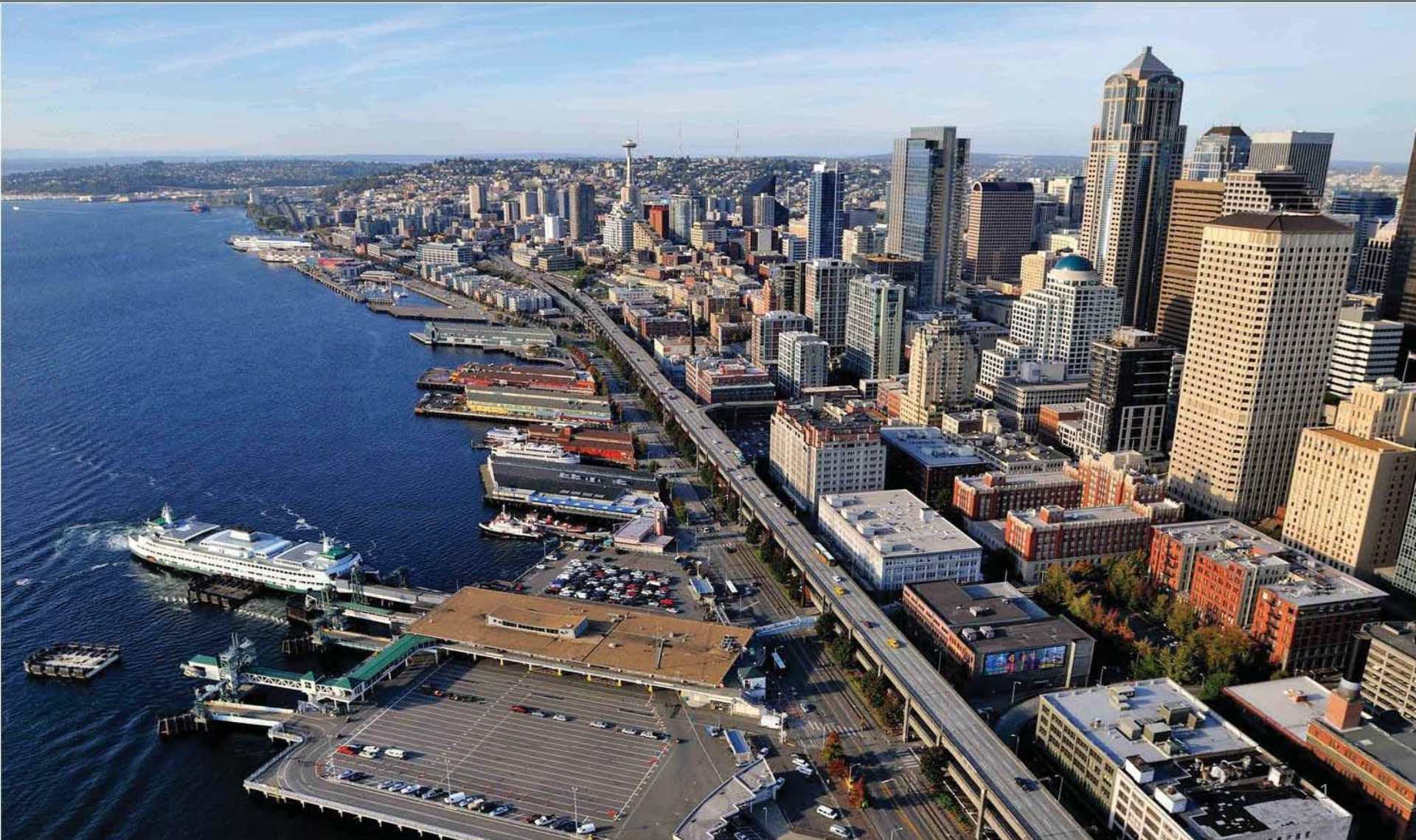


Waterfront
Seattle.org



Waterfront Seattle.org

WHAT MAKES A GREAT WATERFRONT?

Guiding Principles

- Create a waterfront for all.
- Put the shoreline and innovative, sustainable design at the forefront.
- Reconnect the city to its waterfront.
- Embrace and celebrate Seattle's past, present and future.
- Improve Access and Mobility (for people and goods).
- Create a bold vision that is adaptable over time.
- Develop consistent leadership—from concept to construction to operations.

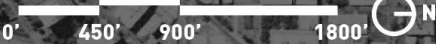
WATERFRONT SEATTLE PROJECT AREA

ELLIOTT BAY

LAKE UNION

James corner field operations

-  CORE PROJECT AREA
-  FRAMEWORK PLAN ELEMENTS



Sources: City of Seattle GIS, Google Maps

Framework Plan

- Goal: Establish long-range planning and design framework
- System of public spaces, green connections and related facilities that integrate the waterfront into the urban fabric of downtown
- Will identify potential projects on the waterfront and connections to the waterfront
- Includes access and public art strategies
- 18 – 21 month process

Concept Design

- Takes place in parallel with development of Framework plan
- Brings core project to approx. 10 percent design
- Ensures timely coordination with the Seawall project
- Allows development of construction cost estimates
- Prepares for environmental review and permitting
- Integrated design of all elements including public spaces, streets and utilities

2010 2011 2012 2013 2014 2015 2016 2017 2018 2019

WATERFRONT SEATTLE

FRAMEWORK PLAN & CONCEPTUAL DESIGN

POTENTIAL DESIGN AND CONSTRUCTION OF EARLY PROJECTS*

DESIGN ALASKAN WAY + ELLIOTT-WESTERN CONNECTION

DESIGN PUBLIC SPACES IN RIGHT OF WAY

PROPOSED SR99 TUNNEL OPENS

VIADUCT DEMOLITION

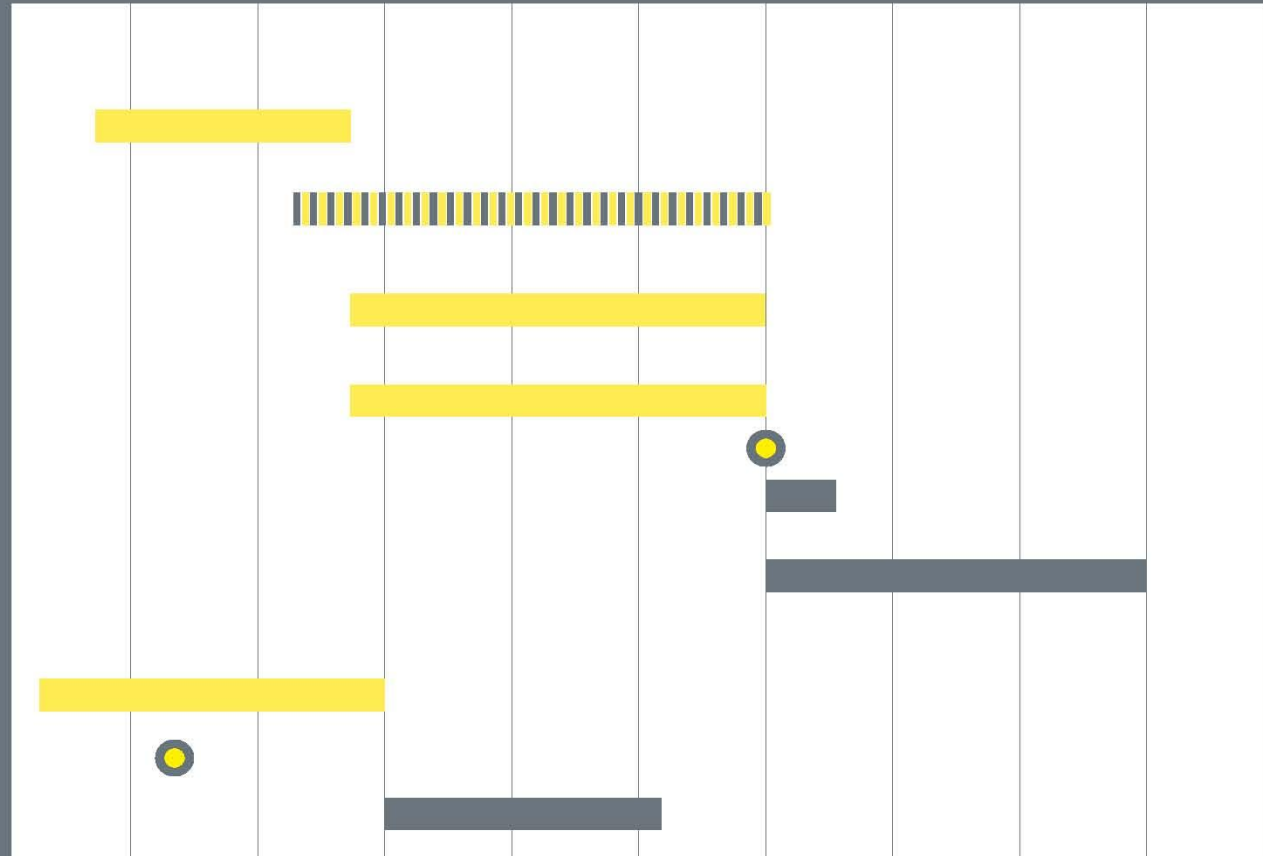
CONSTRUCT PUBLIC SPACES, STREETS AND UTILITIES

ELLIOTT BAY SEAWALL

DESIGN

PREFERRED ALTERNATIVE SELECTED

CONSTRUCTION



2010 2011 2012 2013 2014 2015 2016 2017 2018 2019

*EARLY PROJECTS COULD INCLUDE:
 Improved east-west pedestrian connections
 Railroad Way S. pedestrian street
 Pedestrian bridge at Vine St & hillclimb assist at Union St
 Waterfront Park, Pier 62/63

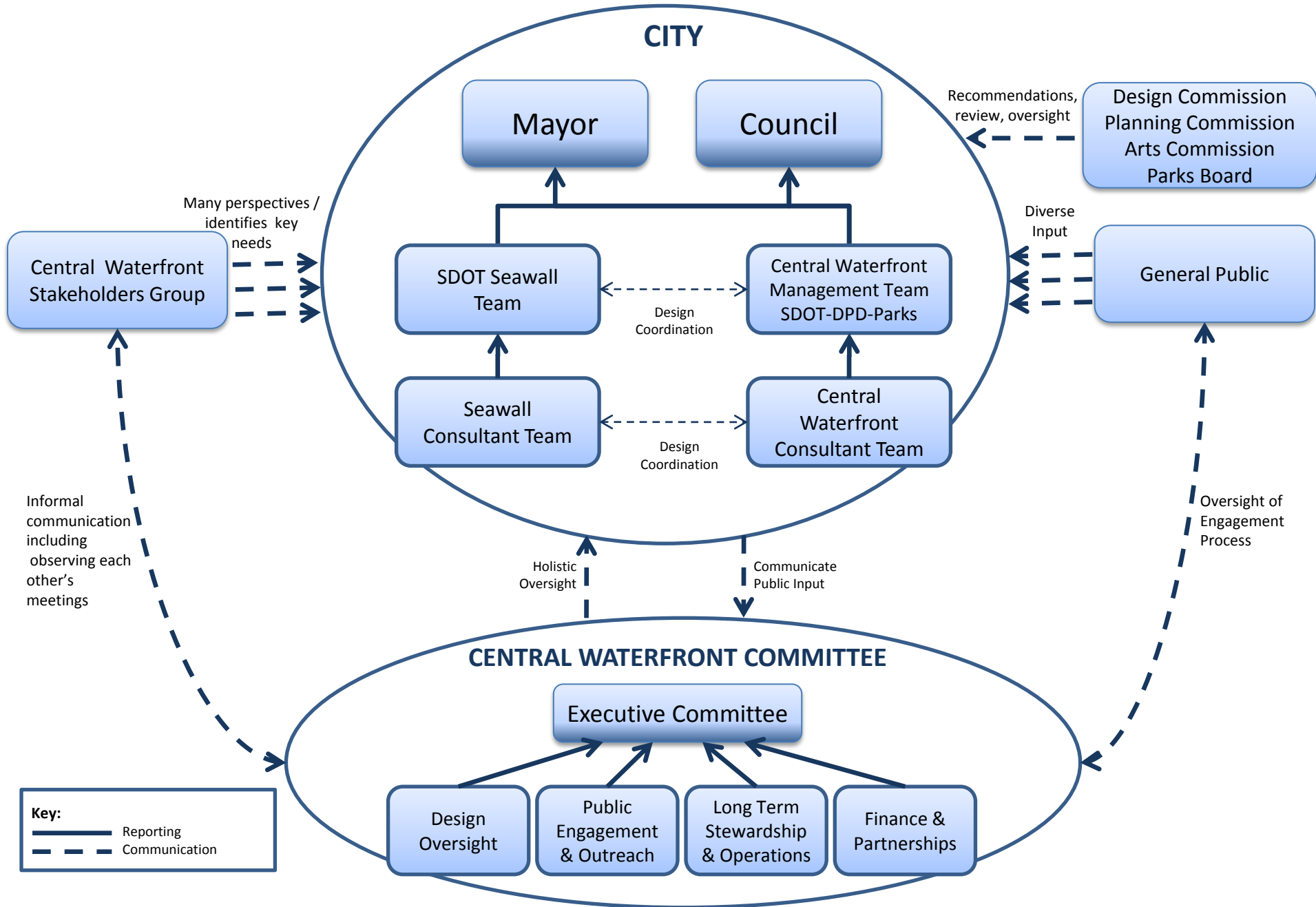
 = DESIGN

 = CONSTRUCTION

 = MILESTONE

 = POTENTIAL

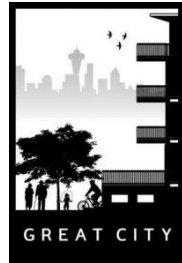
CENTRAL WATERFRONT AND SEAWALL ORGANIZATIONAL STRUCTURE



February 17 Event

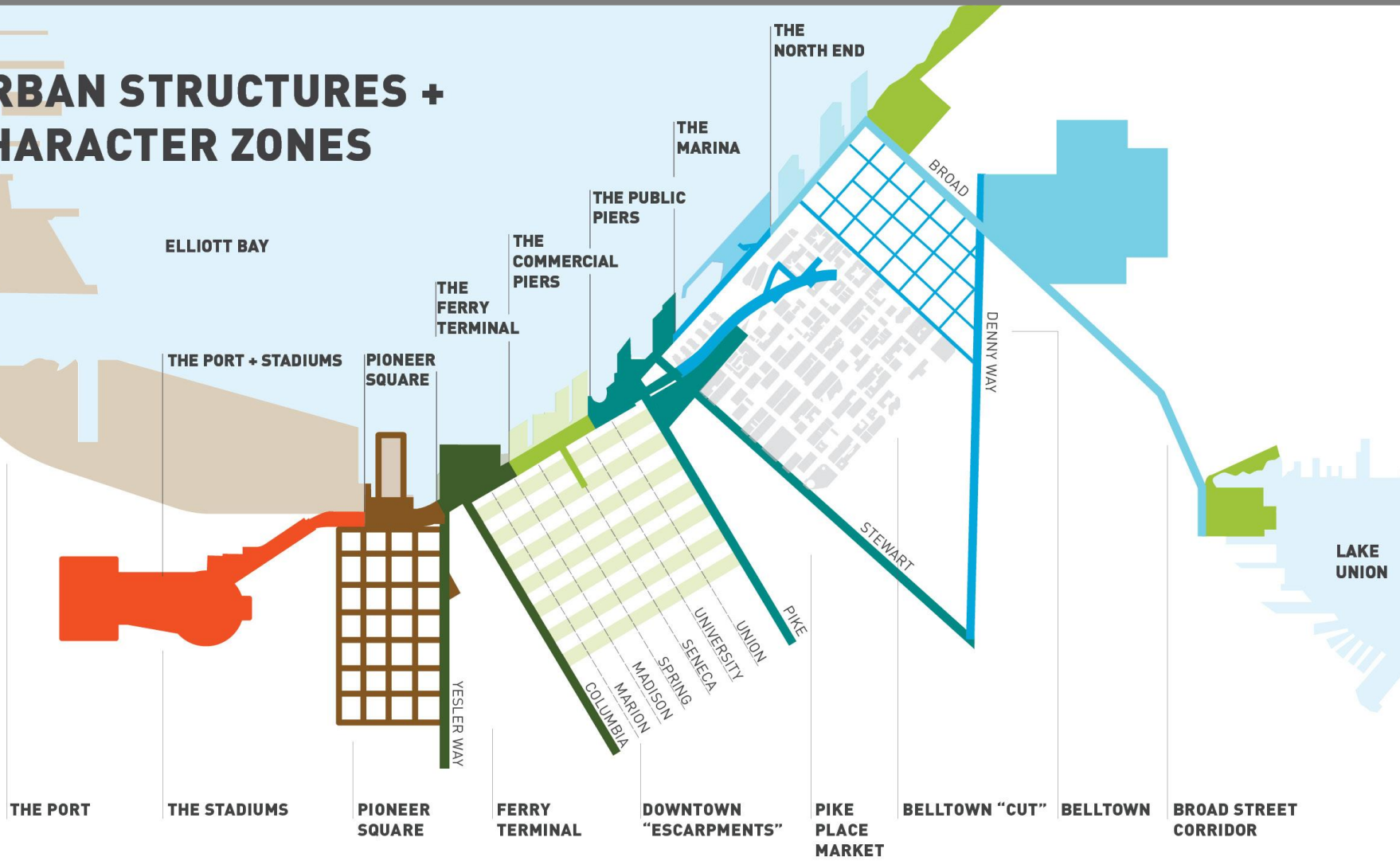


Waterfront Seattle.org



*Empowering Communities.
Changing Lives.*

URBAN STRUCTURES + CHARACTER ZONES



February 17 Event



Public Survey

More than 1200 participants to date

- What makes a great waterfront?
- Which if the following uses are most important to you? Least important to you?
- What are two main uses that would attract you?
- What would you most love to see? Be most disappointed to see?
- If we could do one thing to improve the waterfront now, what would that be?



What's Next?

- Continued close design coordination with the Seawall replacement team
- Preferred seawall alternative identified in April
- Design team develops first iterations of Framework Plan and identifies “big moves”
- Hold second public event in Late May 2011
- Summer event planning

New Alaskan Way surface street

- Urban street with signalized intersections and high quality pedestrian environment
- Connection to Elliott and Western Avenues with bridge crossing of railroad tracks
- Freight route to/from Ballard/Interbay
- Transit priority access to downtown from SR99 south
- Ferry terminal access

