

Times Square Building

Monorail guideway

McGraw Square and Westlake Avenue -

Exhibit A: Existing Conditions

Westin

10'

50'



5th Ave

McGraw Square Park

paid parking (off peak only)

bus zone

Stewart St

strain pole  
signal control box

streetlight (old)

pedestrian  
signal

charter bus zone

Westlake Ave

19'

12'

8'

Olive Way

raised planter  
box

streetcar platform

streetlight (new)

tree pit

11'

10'

10'

11'

Only  
Bus

MDB

Bank of America



Times Square Building

# "McGraw Streetcar Plaza at Westlake / Times Square"

## Exhibit B: Proposed Conditions

Westin

0' 10' 50'



Westlake Ave

Olive Way

5th Ave

Stewart St

ONLY

9

existing streetcar terminus

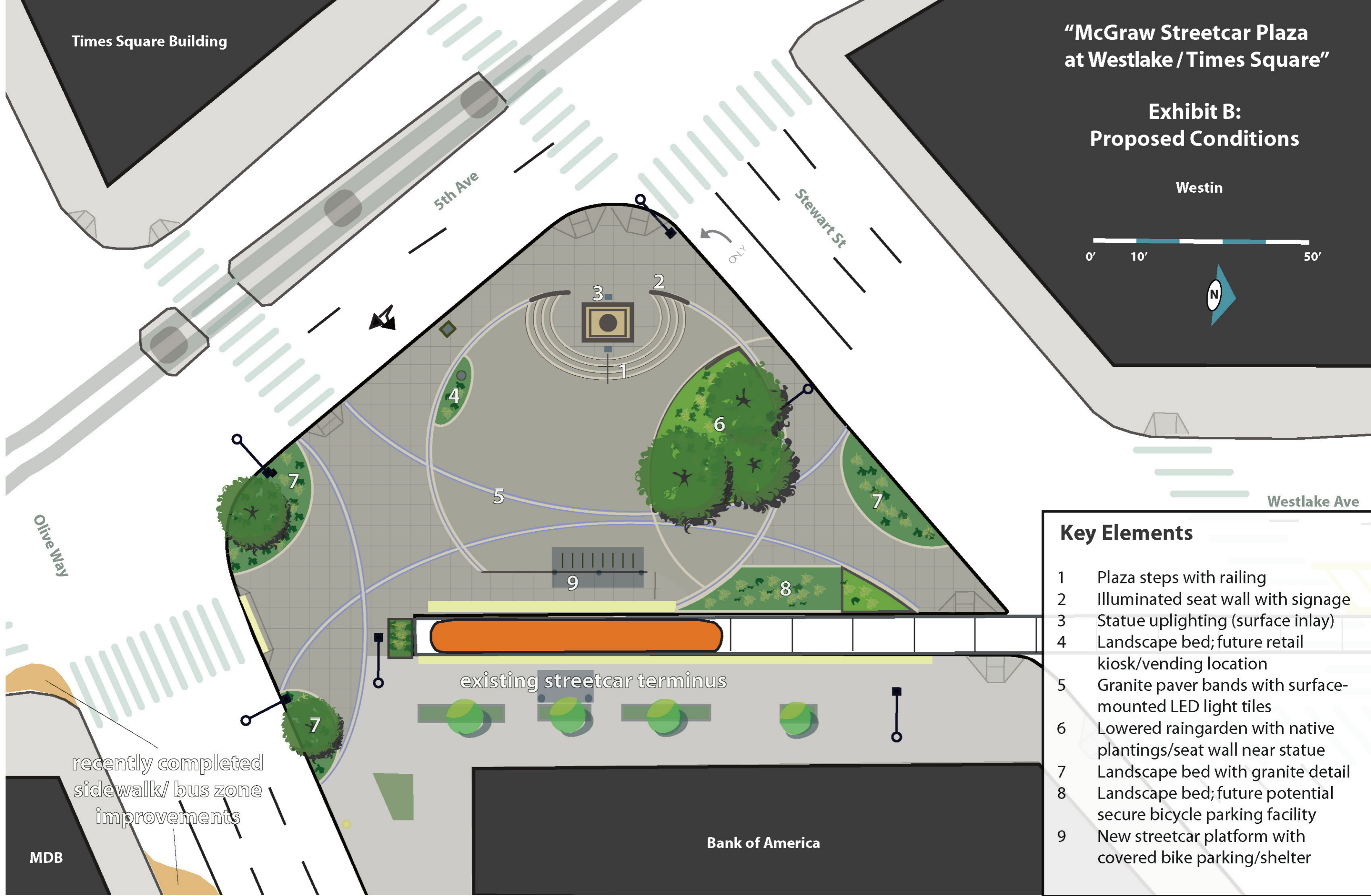
Bank of America

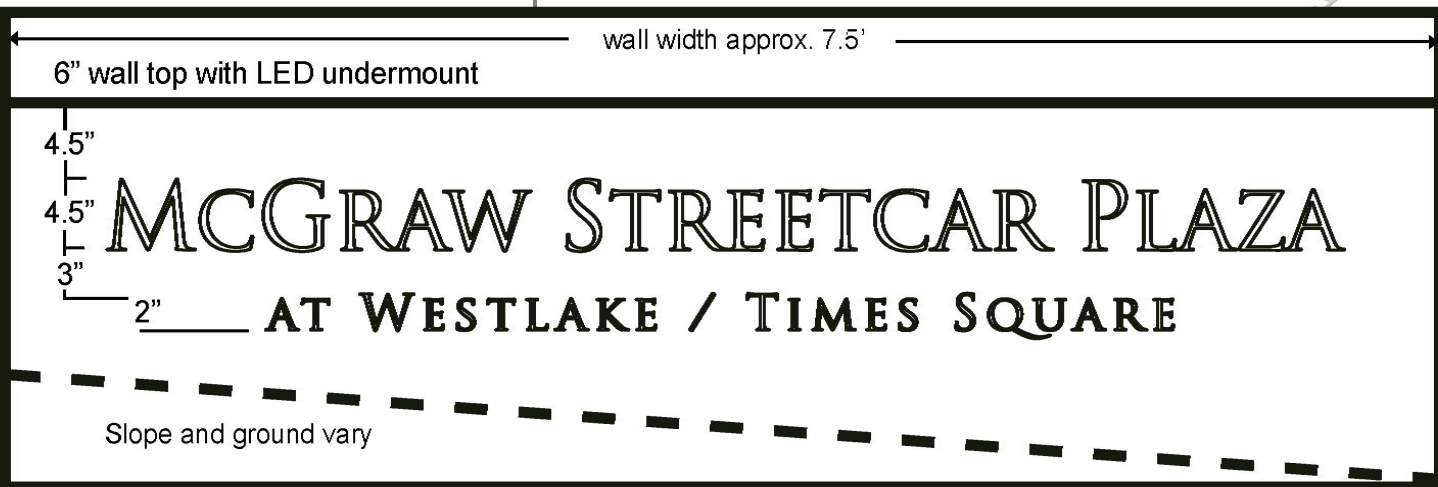
### Key Elements

- 1 Plaza steps with railing
- 2 Illuminated seat wall with signage
- 3 Statue uplighting (surface inlay)
- 4 Landscape bed; future retail kiosk/vending location
- 5 Granite paver bands with surface-mounted LED light tiles
- 6 Lowered raingarden with native plantings/seat wall near statue
- 7 Landscape bed with granite detail
- 8 Landscape bed; future potential secure bicycle parking facility
- 9 New streetcar platform with covered bike parking/shelter

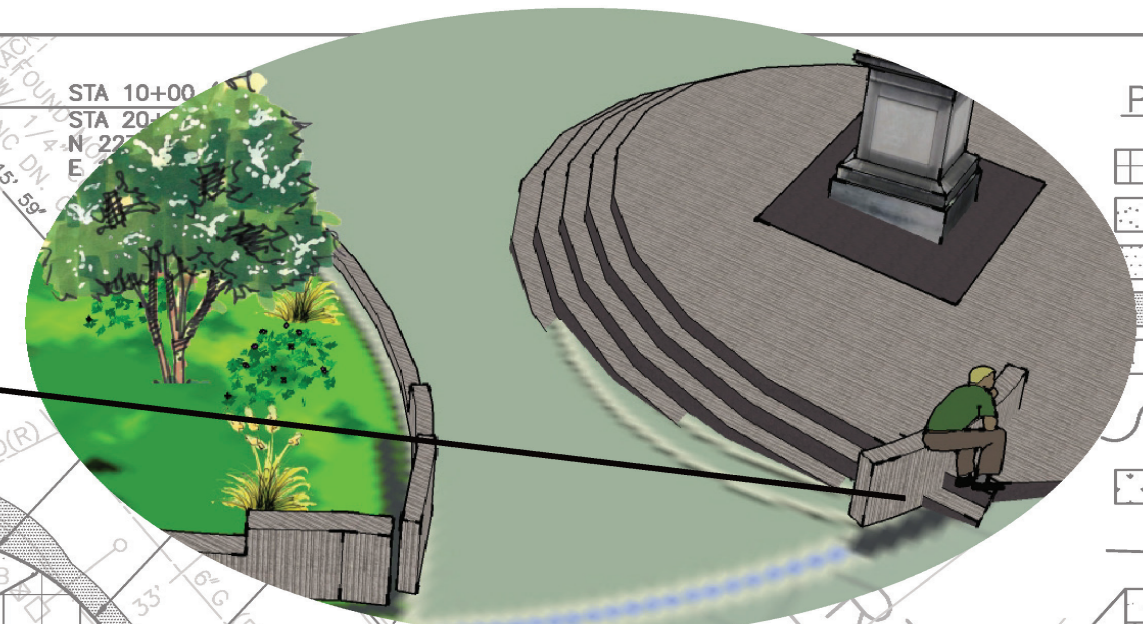
recently completed sidewalk/ bus zone improvements

MDB

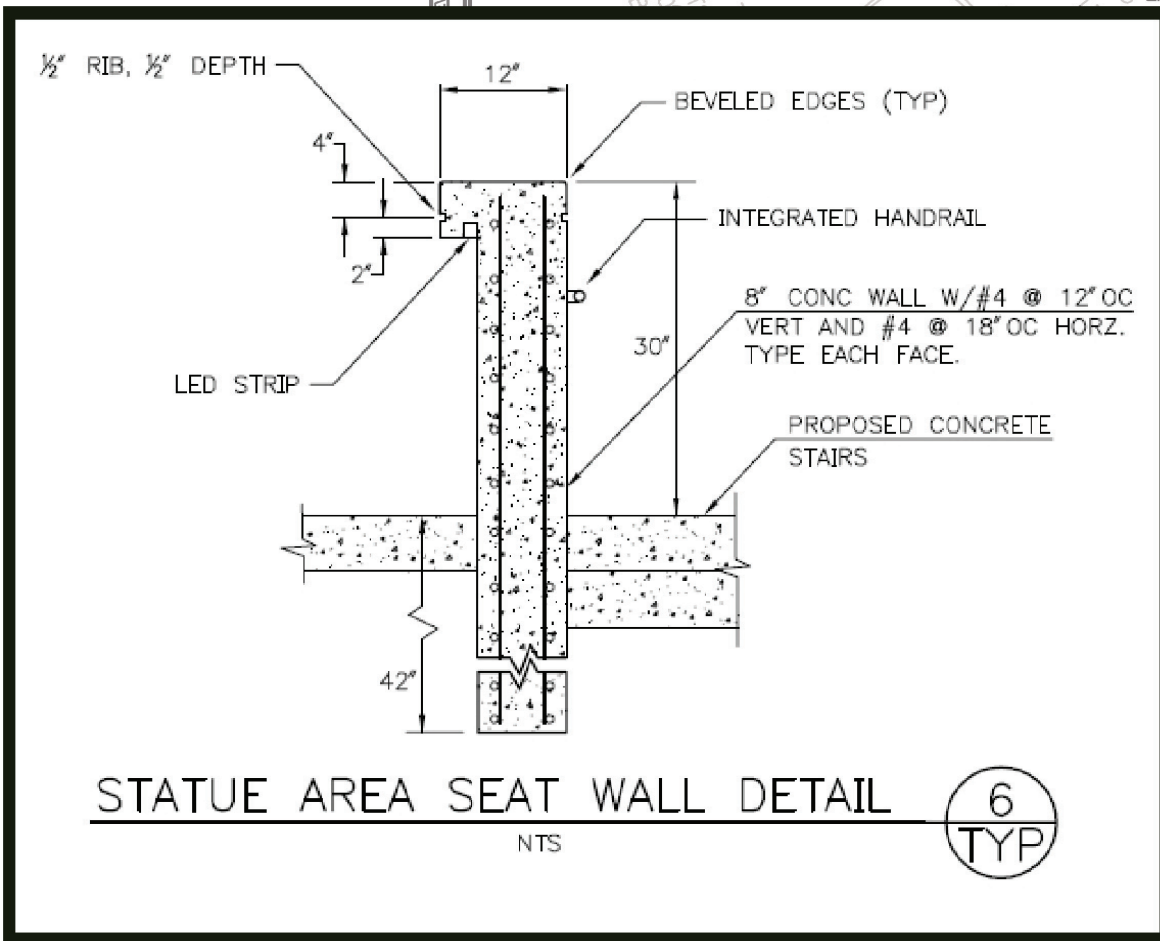




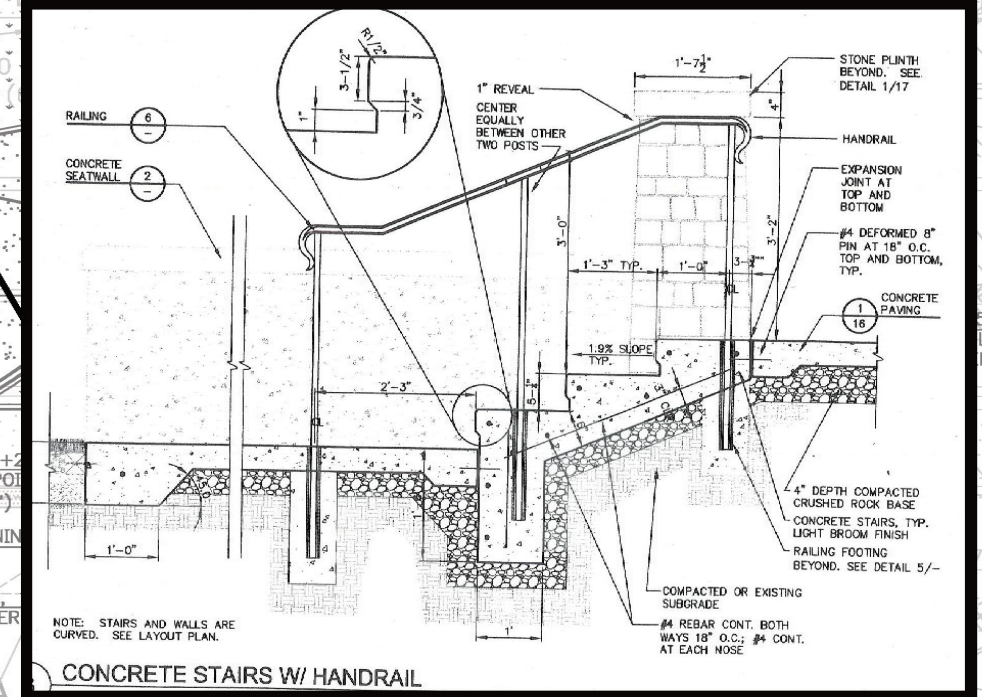
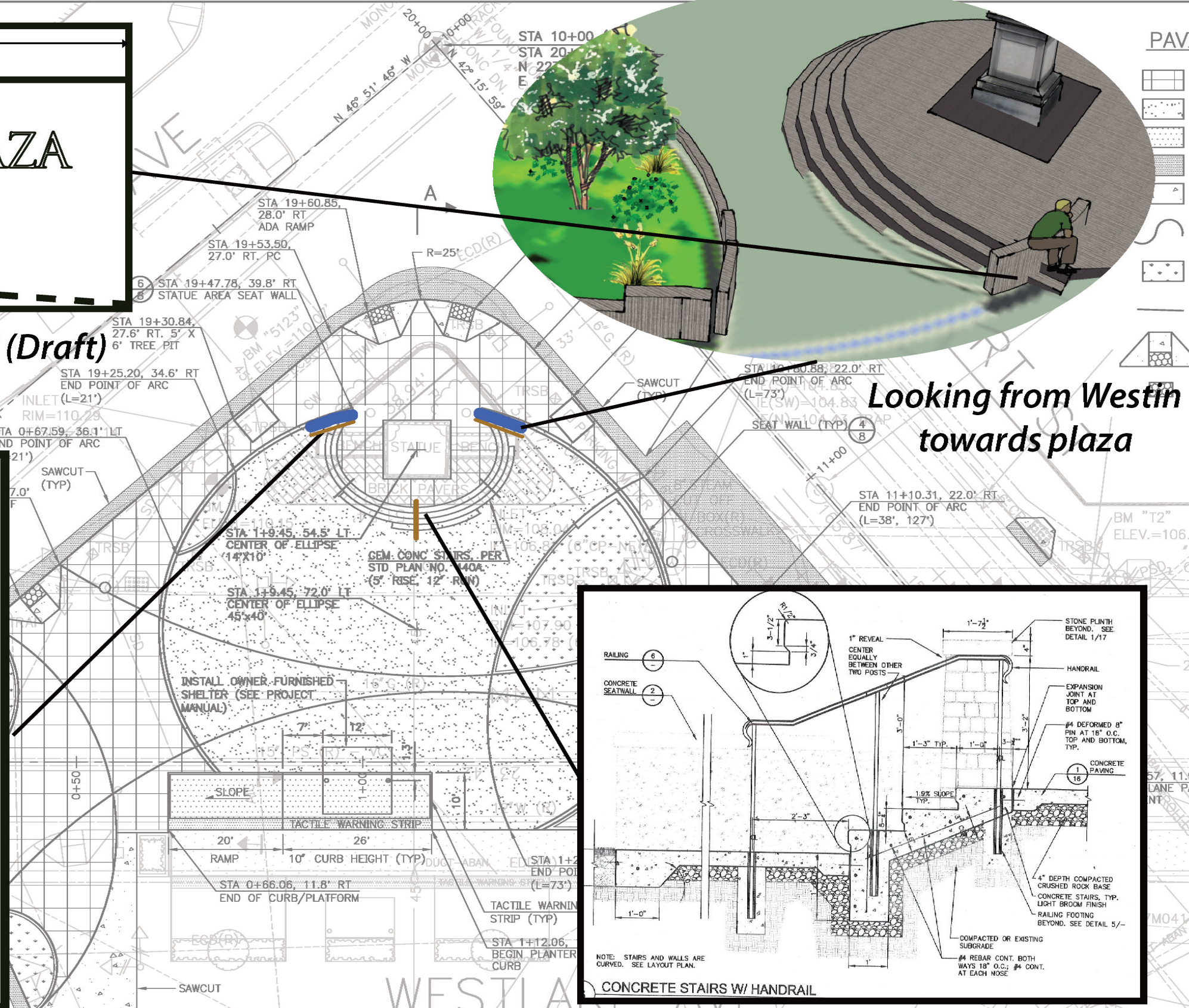
5th Ave and Stewart Ave side(s) - Naming Detail (Draft)



Looking from Westin towards plaza

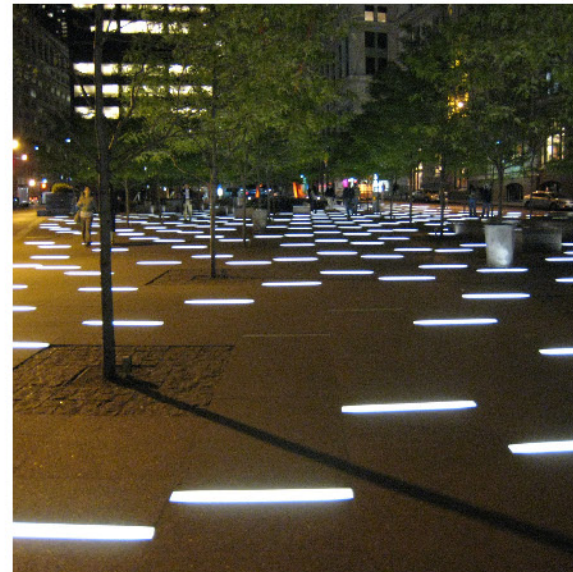
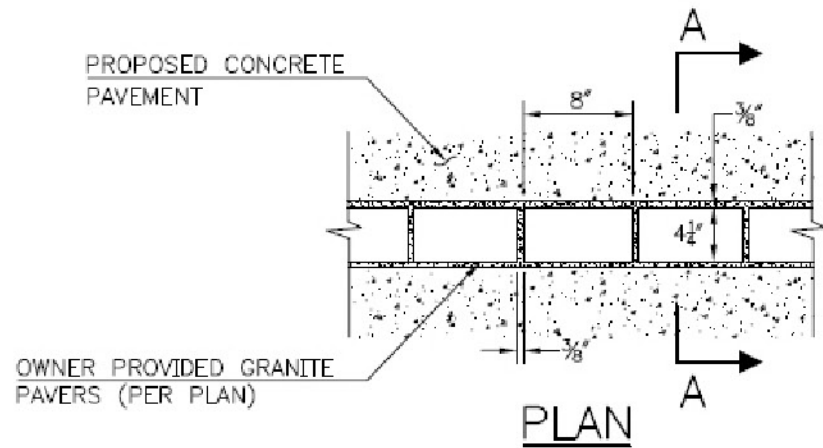


Seat Wall Section Detail



Railing Detail (from Cal Anderson Park)

circular "paver bands" with light tiles spaced every 4-5 feet

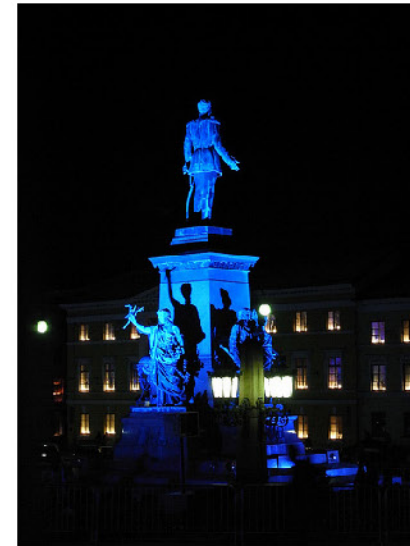


Salvaged 4x8" grey granite blocks



Matching 4x8" LED light tiles

statue uplighting



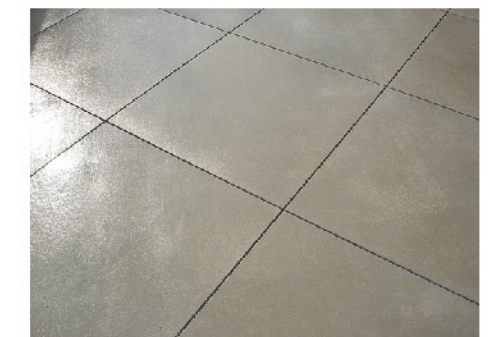
Beta-Calco walkover uplighting luminaire (x2)



concrete details

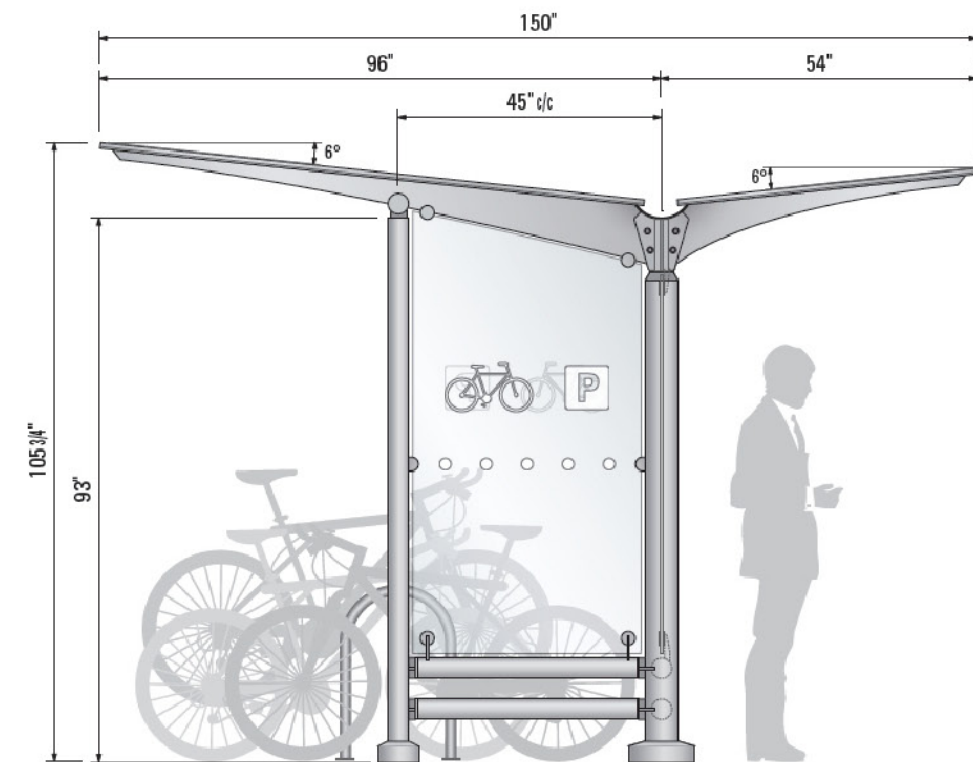


Dark colored concrete (1 1/2 lamp black)



4x4' saw cut score pattern

transit/bicycle parking shelter

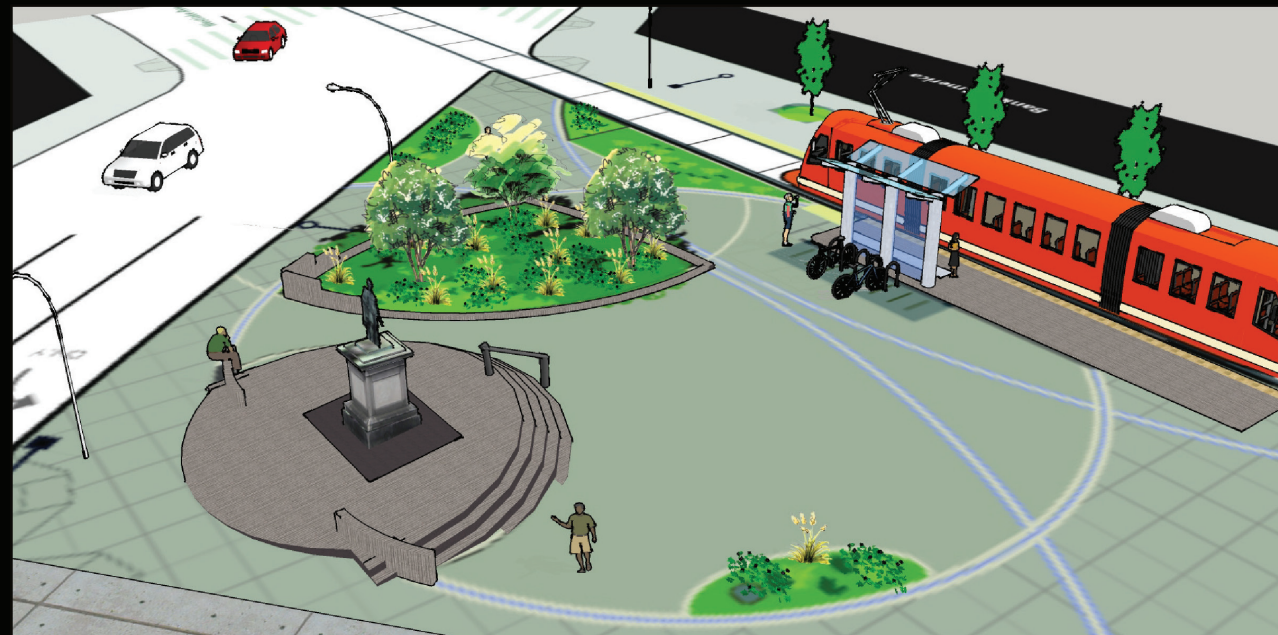




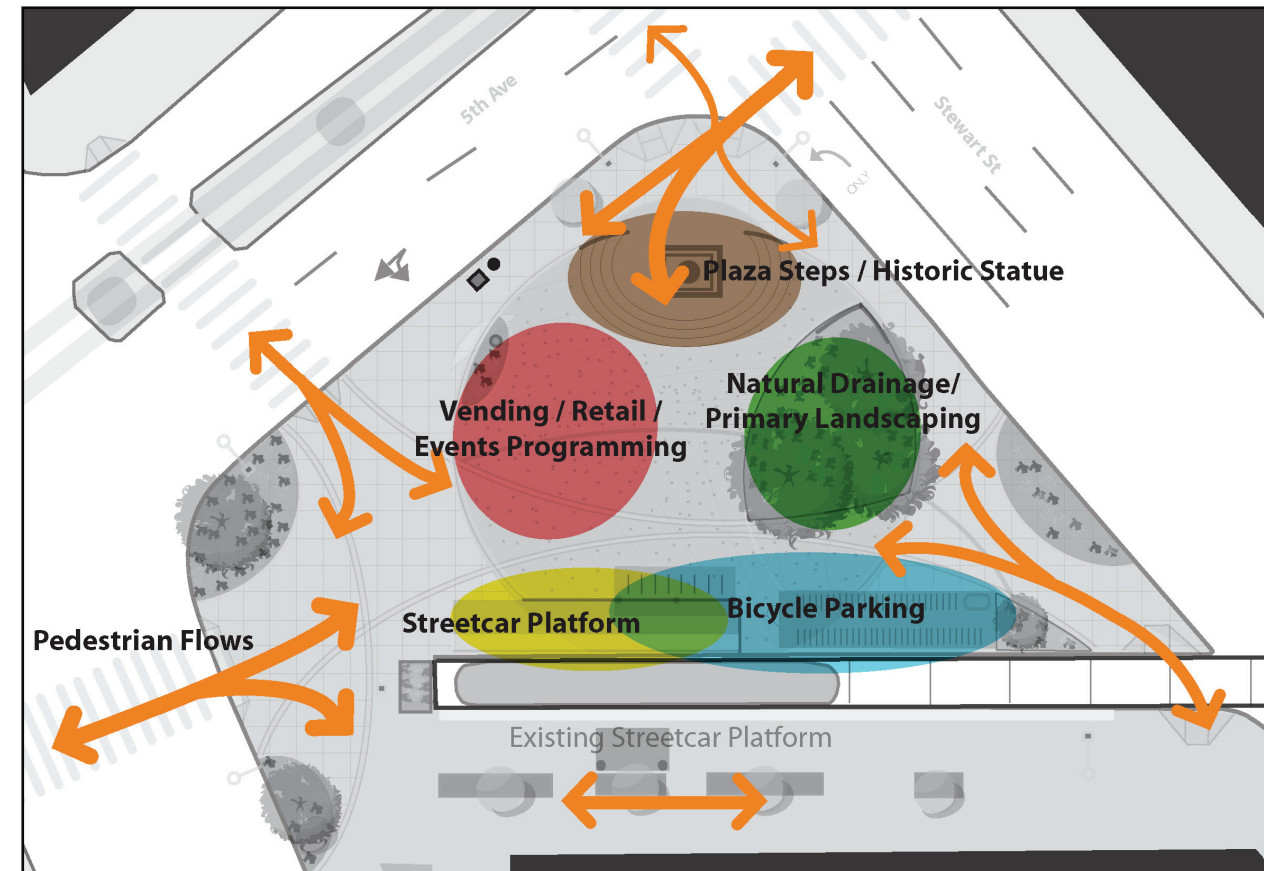
Looking northwest towards Westin Hotel



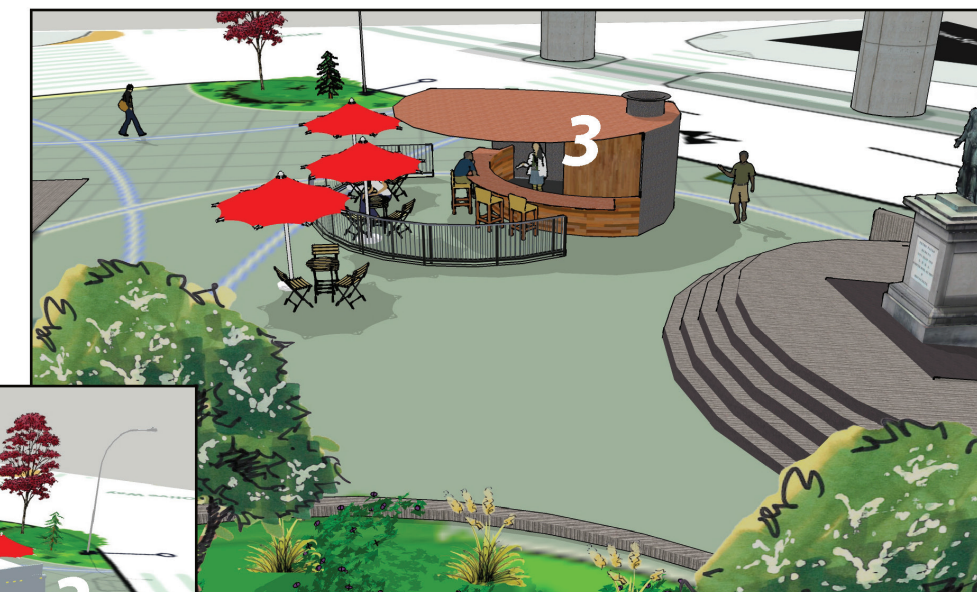
Street level looking southeast from Stewart St



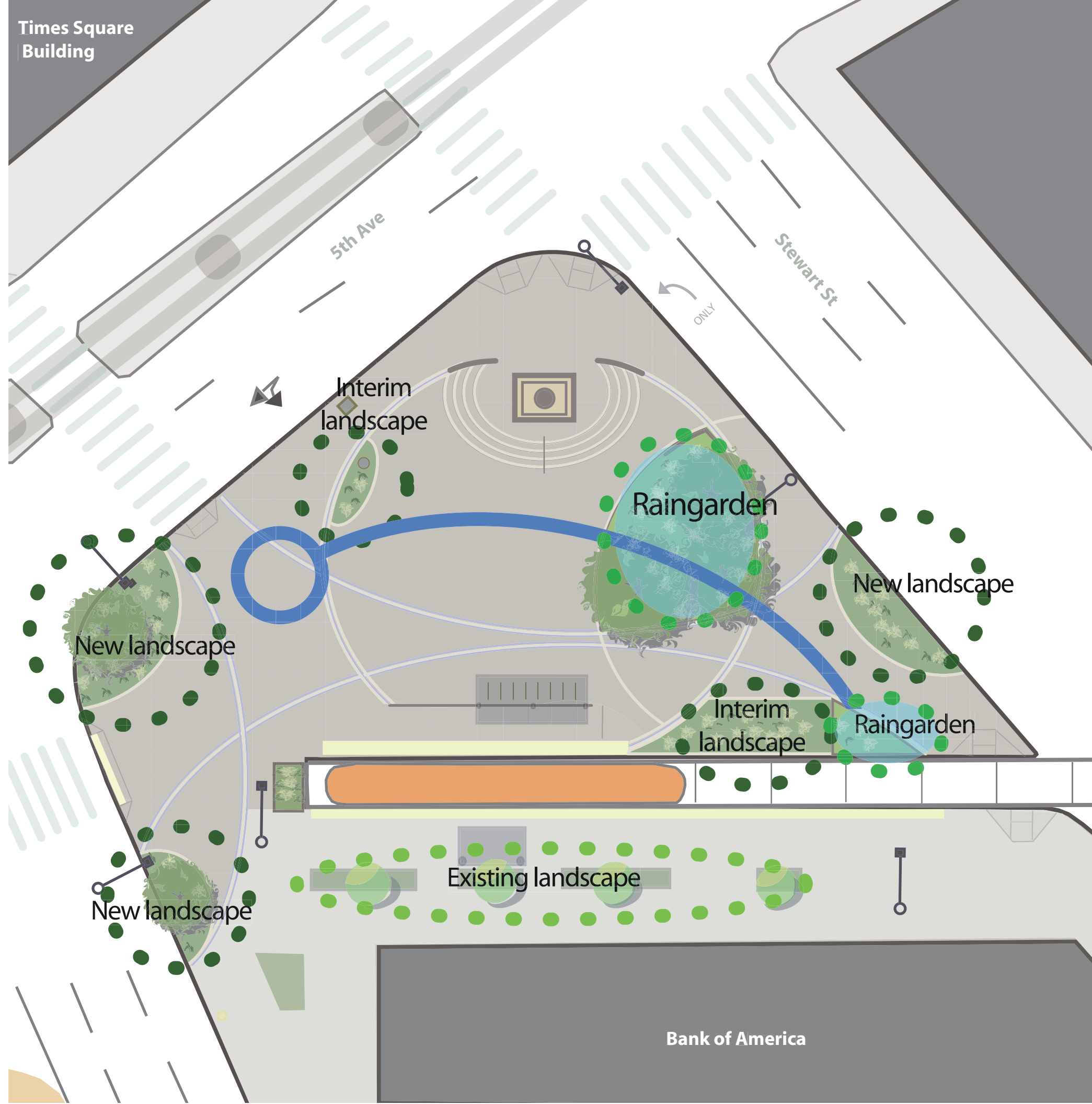
Looking down to plaza from Monorail/Times Square Building



Potential future plaza activities/changes include:



1. Secure bicycle parking facility
2. Mobile food vending in plaza; or
3. Commercial kiosk /cafe



# “McGraw Streetcar Plaza at Westlake / Times Square”

## Landscape & Water

- Native plants provide higher survivability
- Mix of evergreen and deciduous
- Provides year-round interest
- Store/infiltrate as much run-off as possible
- Use stormwater to irrigate the landscape

*Dogwood or other native flowering*



*Vine Maple - Acer circinatum, adds fall color*



*Deer /Sword Fern - iconic northwest shade lover*

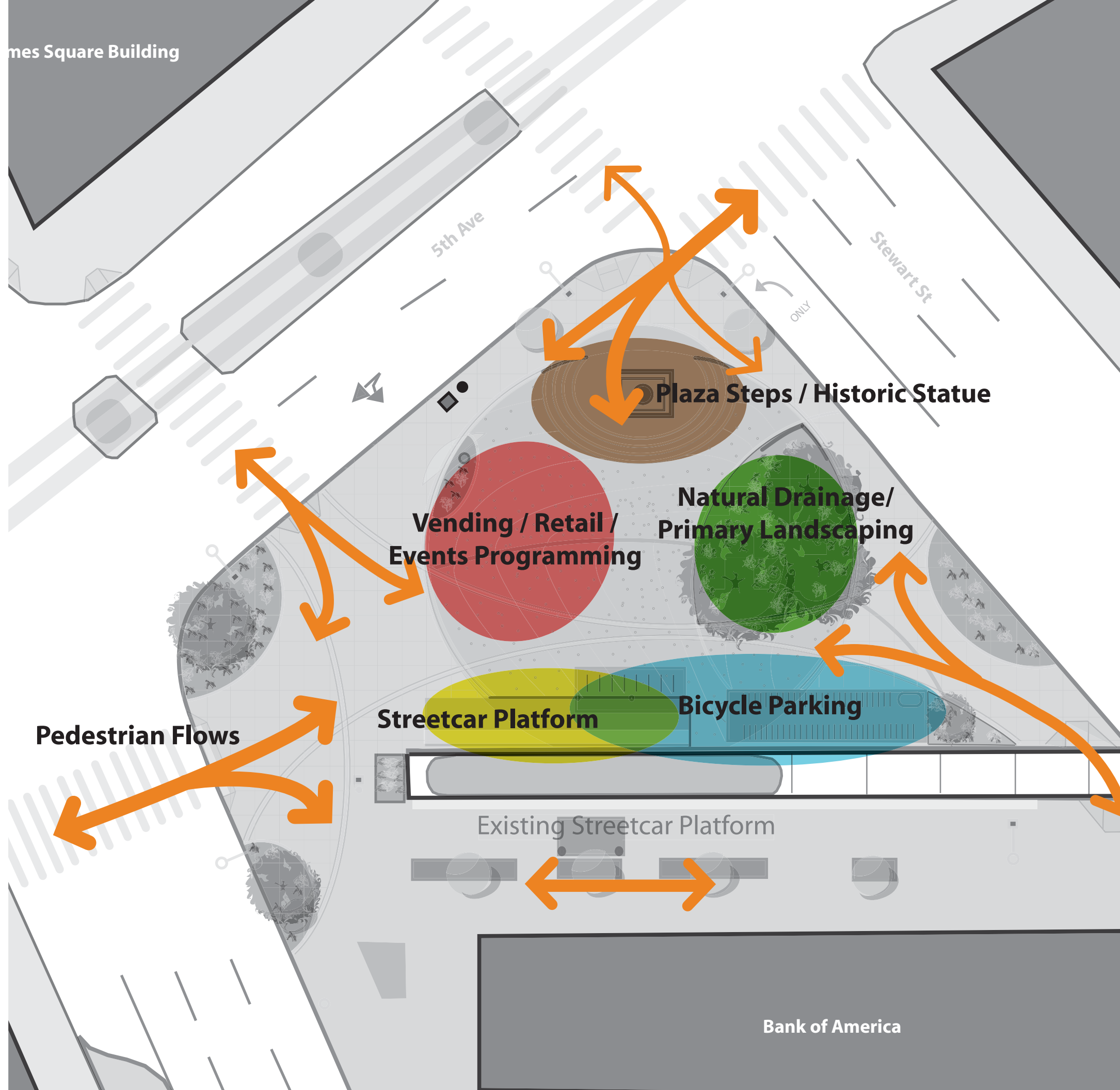


*Grasses and other raingarden appropriate plantings*



*Oregon Grape - delicate leafed evergreen shrub*





## "McGraw Streetcar Plaza at Times Square"

### Proposed Program

- Site anchored by historic statue, streetcar, and large raingarden
- Activation a high priority, including retail/vending, transit amenities, and bicycle parking
- Flexible design that can easily absorb future facilities, complex pedestrian circulation

*Plaza designed to accommodate future retail kiosk and stand-alone secure bicycle storage facility*



*As proposed, plaza allows space for mobile food vending and/or events programming (e.g. holiday gatherings, food markets)*