



WEST SEATTLE RESERVOIR PARK

CONCEPT ALTERNATIVES

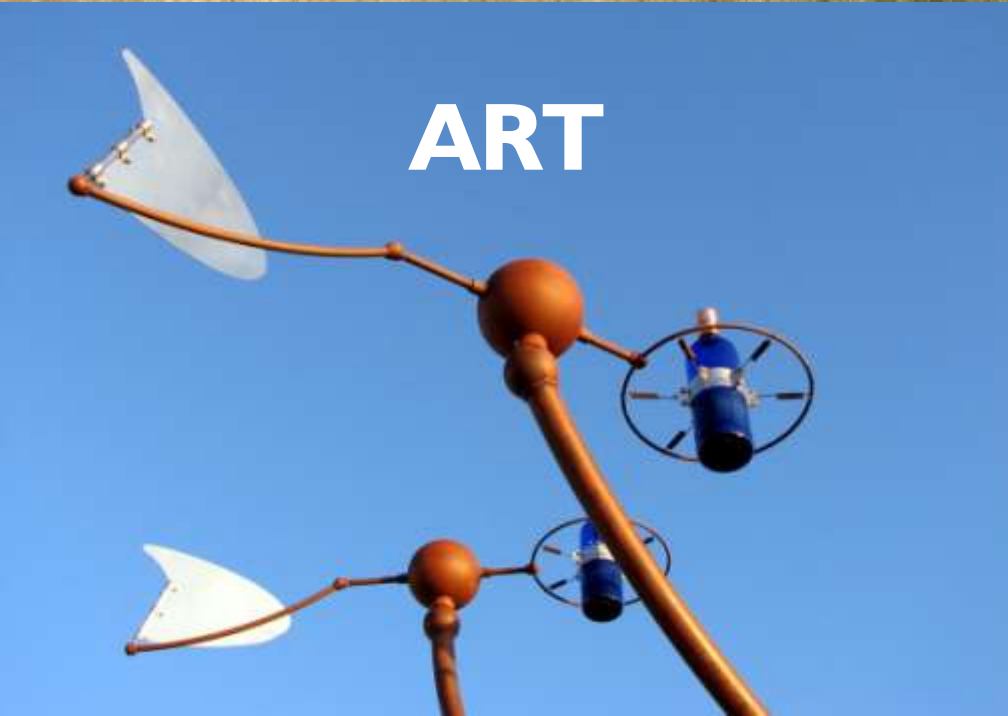
PREPARED BY
SiteWorkshop
LANDSCAPE ARCHITECTURE



DAVID BOYER

www.boyersculpture.com





ART



AGENDA

Concept Alternatives Review

10:15 – 10:30

Group Review Session

10:30 – 11:15

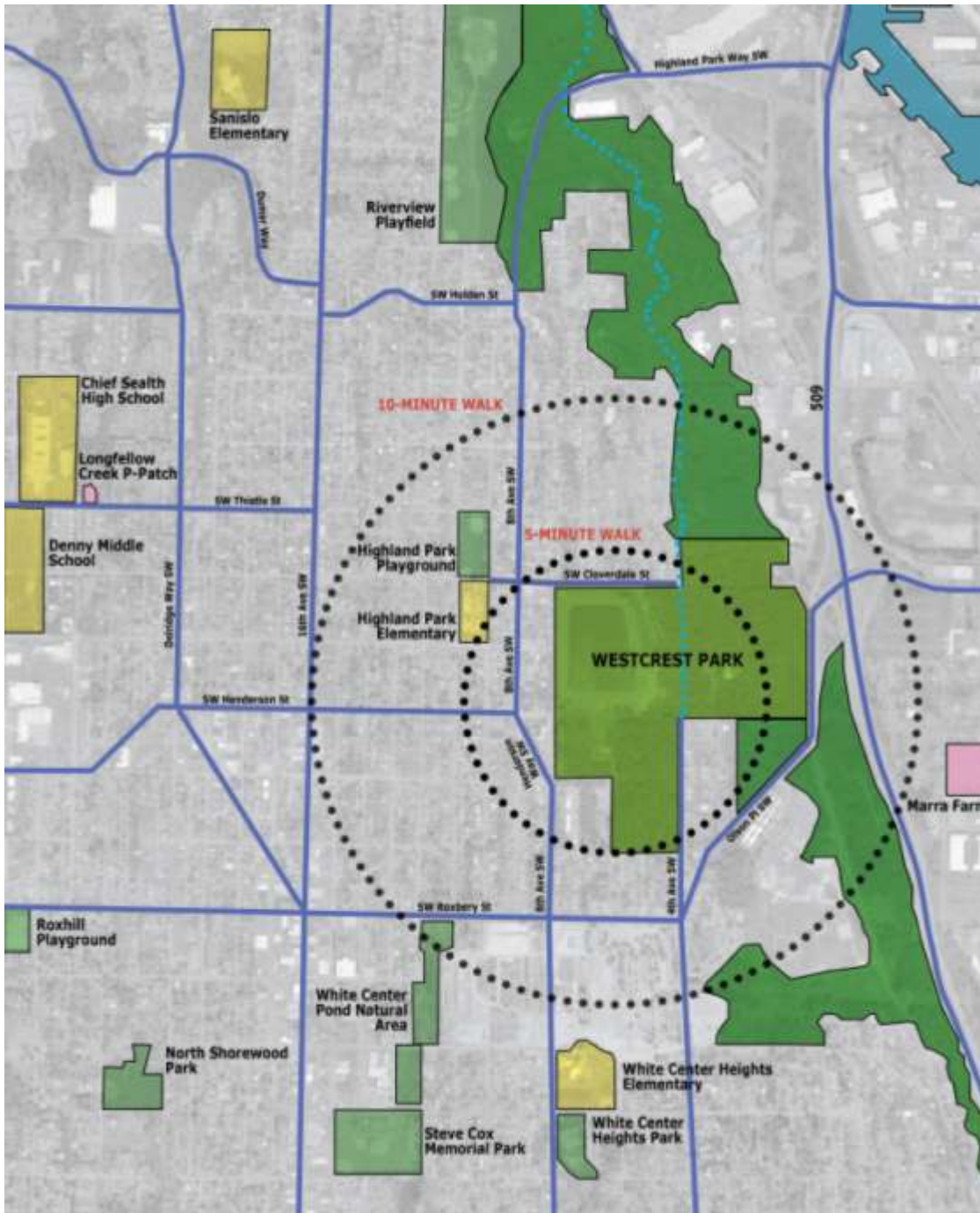
Group Report Back

11:15 – 11:45

Next Steps

11:45 – Noon

CONTEXT + ANALYSIS



NEIGHBORHOOD CONTEXT

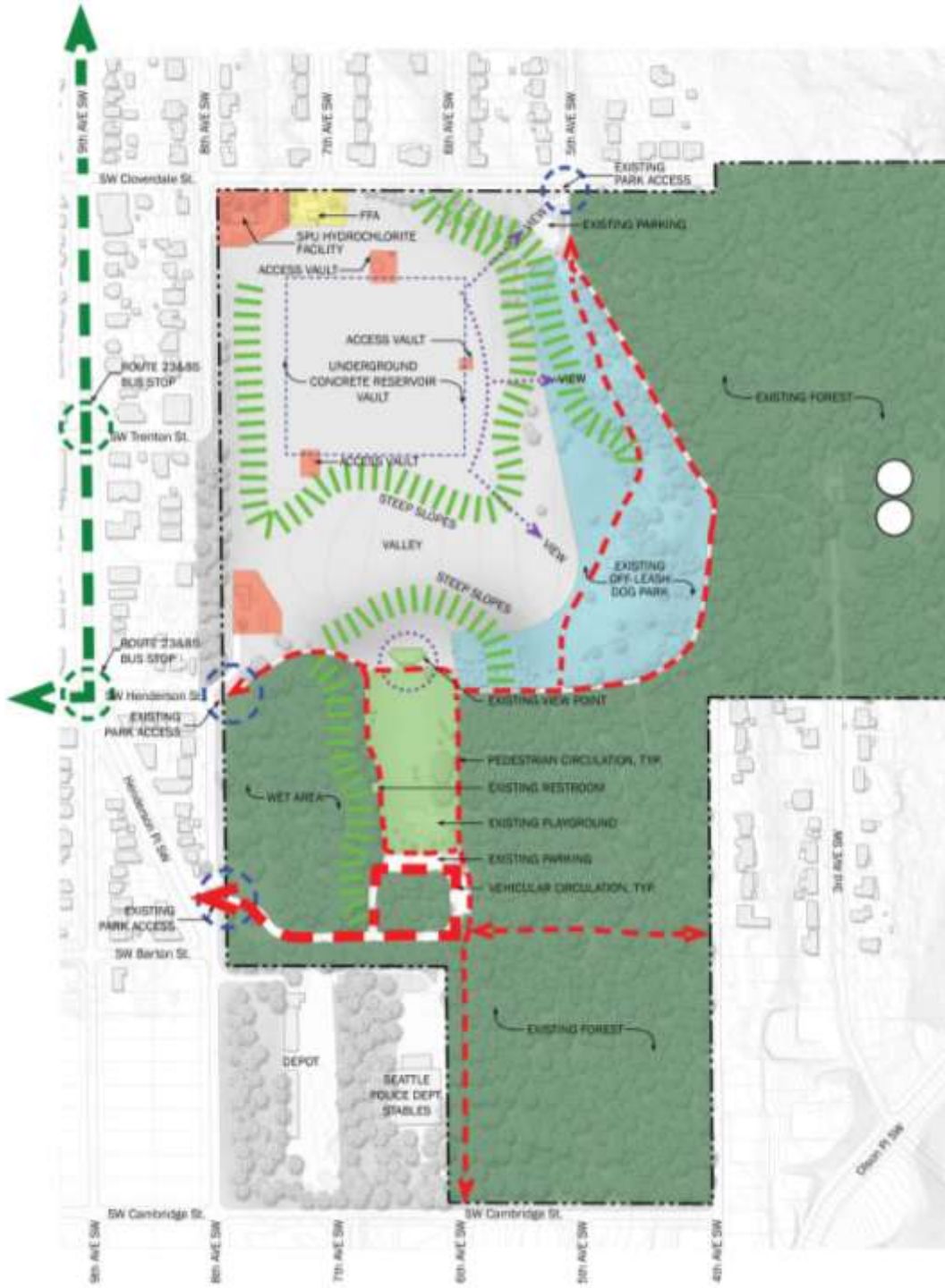


SITE AERIAL

EXISTING CONDITIONS



SITE ANALYSIS





STREET EDGES



PARK ELEMENTS



TOPOGRAPHY



VALLEY VIEWS



TERRITORIAL VIEWS

FOREST TRAILS



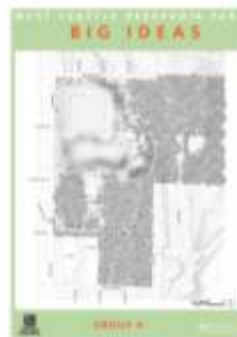
WETLAND

ART

OFF-LEASH AREA

FACILITIES

PUBLIC COMMENTS



Group #1

- Need more inside parking
- Open up 8th Avenue
- Walking trail improvements
- Bocce/croquette/skate park/art sculpture
- 8th Avenue & Coverdale sidewalk
- View points – city fireworks
- Amphitheater for plays/music
- View picnic areas
- Pea Patch
- Expand play area parking
- Disc golf

Group #2

Reservoir lid – multipurpose field with lots of open space
Kite festival space
Picnic/bocce/barbeque with a view
Stage area in valley – concerts/outdoor cinema/theater
Art concepts – murals/sculptures/totems
Expand play area parking lot
Evening and night lighting
Measured distance paths

Group #3

Coverdale dog park parking lot improvements and expansion
Increase in park parking opportunities
A look out as a center piece/art space
Disc golf activity keeps good use in park space
Better maintained trails
Dog park modification to integrate better with non dog park uses
Soccer fields
Expand playground
Improve safety

Group #4

Disc golf in valley if woods off limits
Swing sets on the view
Big play ground chutes and ladders castle
Volleyball
Exercise equipment in dog park
Spray ground
Tee boxes for disc golf as art/interpretive
Lighted walkways

Group #5

Parking...a big issue park wide. Dog park parking expanded
Expand/increase restrooms
Sports/multipurpose fields
Skate park or skate street course
Shelters/barbeque/picnic areas
Fountains and wading pools with art incorporated
Amphitheater...weigh costs with use
Disc golf...improves safety
Trail hierarchy. Renegade trails. Trail clarity. Clear signage

Group #6

Look at park as a whole
Improve sidewalks
Beginner disc golf
View tower
Benches/art/pea patch/bocce
Drainage issues
Parking is a problem
Blind intersections need traffic control
Involve Duwamish tribe in art

Group #7

Disc golf in park
Skate park near look out area
More parking at playground, parking island
Wiffle ball field
Trail lighting – solar powered
Drainage at valley

Group #8

Pea patch in open sunny area
Bocce ball
Incorporate natural setting
Interpret nature...nature walk
Expand dog park
Connections to Duwamish
Nature consortium in green belt
Restroom security
Disc golf

Group #9

Parking is #1 issue
Cloverdale dog park parking lot is too small
Community signage in park
Climbing wall like Camp Long
Multi-use area
Adequate restrooms
Park walking trail improvements
Amphitheater
Pea patch

Group #10

Climbing/restrooms great
Expand existing dog park and play area parking areas
Reservoir lid as athletic fields
Off leash kids area
Add parking for lid area
Pea patch at bottom of valley
Running trails/lighted walking trails
Watch light pollution for neighborhood
Skeet shooting
Increase pedestrian access on west side
Amphitheater
Disc golf
Art/public art/rotation of local art

Group #11

Parking and traffic control. Multiple parking spaces/solutions
Drainage issues
Keep water as theme...bird habitats
No amphitheater...not used enough
Pea patch adjacent to apartments
Views to Mt. Rainier
Path on ridgeline of reservoir
Harness wind in art
Unprogrammed open space
Touchable/functional art...not like the untouchable sculpture park

Group #12

Disc golf
Parking
Pavilion/picnic area
Exercise trail with views
Disc golf in woods and on edge of open space
Art in disc golf baskets...art targets like Sedro Woolley
Skate park
Pea patch
Open space...bocce ball/ultimate Frisbee

Group #13

Neighbors within one block
Athletic fields/ultimate Frisbee on lid...natural grass or synthetic
Parking is a big issue...at play area lot
Village green on the lid...structure on the lid?
Good fencing and adjacent complimentary activities at dog park
Central focus at look out
Pea patch north of play area
Disc golf in the woods
Art...well defined pedestrian access framed by art
Bathroom close to fields...improve bathrooms
Coordinate SPU fencing with dog park and future use
Dog park barbed wire fence will come down but dog park fencing will remain as part of SPU project parks is coordinating
Can pedestrians coexist with pedestrian non disc golf use?
More parking at dog park area to accommodate all dog park use
Parking associated with use
Good dog park fencing
Sidewalks are important around park. Create safe access
Mixed use fields
Manage traffic
Traffic impact analysis
SDOT/Bridging the Gap Levy...parks/neighbors, etc should contact SDOT
Be sensitive to green belt and environment/trees when proposing parking lots
SDOT invitation to next meeting

climbing wall exercise stations lighting
disc golf sidewalks skate element
swings art views bocce
open space Walking Trails
picnic areas parking
community gardens restroom improvements
gathering space signage
dog park improvements
playground improvements drainage



VIEW



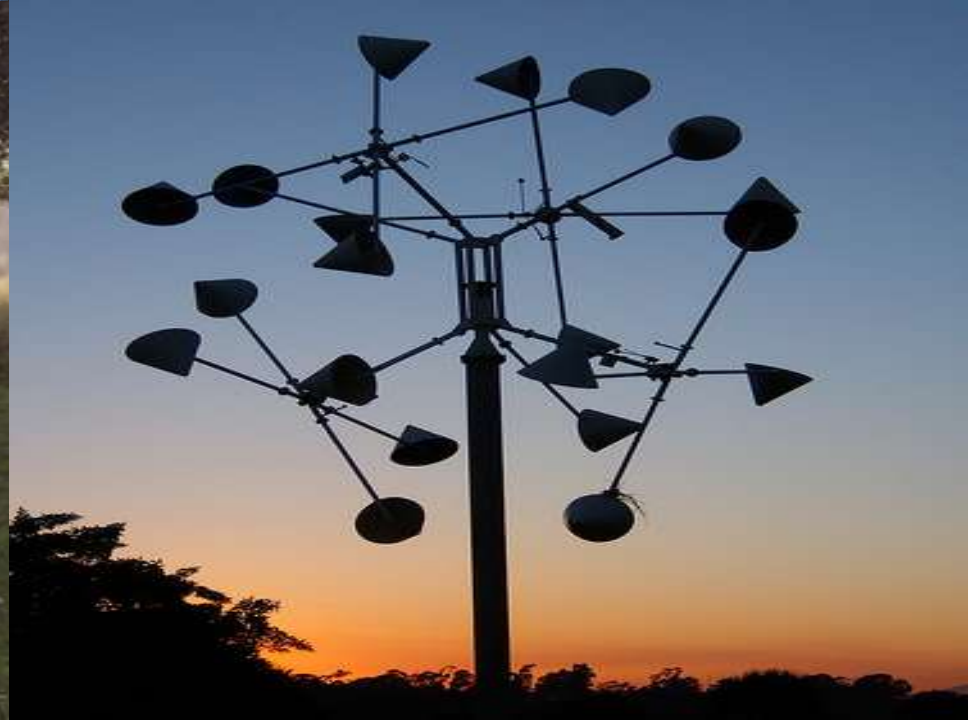




SIT



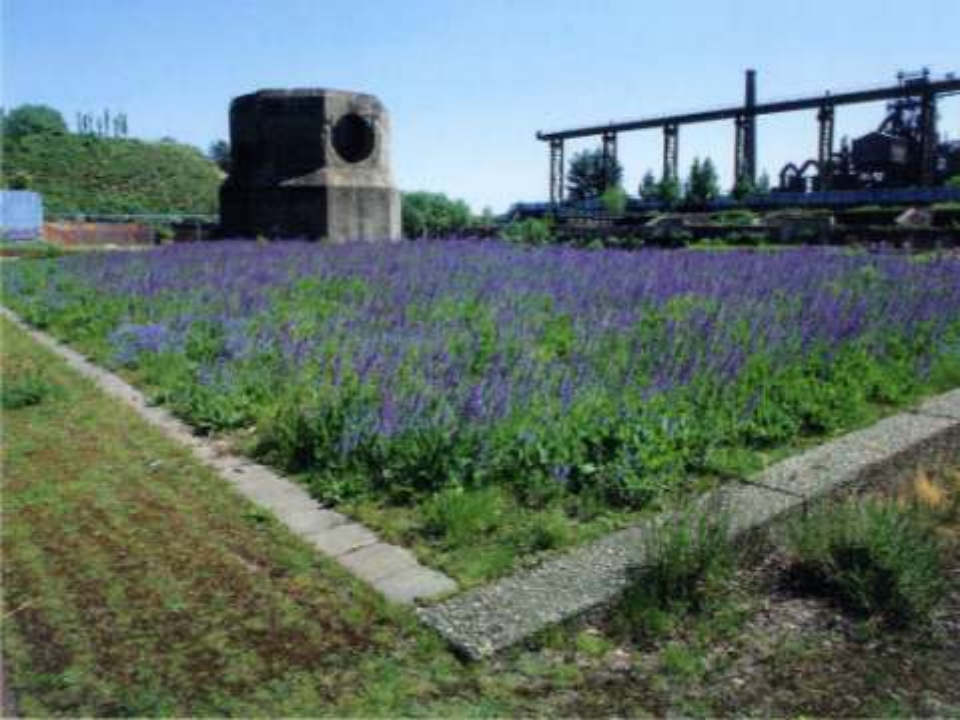








LID



GOALS

*Make the park **accessible**.*

*Make the park **safe**.*

*Make the park **whole**.*

*Create **walking** opportunities.*

*Capitalize on the **views**.*

*Provide **multi-generational** gathering spaces.*

*Provide **unprogrammed** open space.*

*Integrate **art** into the park.*

*Provide adequate **parking**.*

*Improve the **drainage**.*

CONCEPT ALTERNATIVES



CONCEPT #1

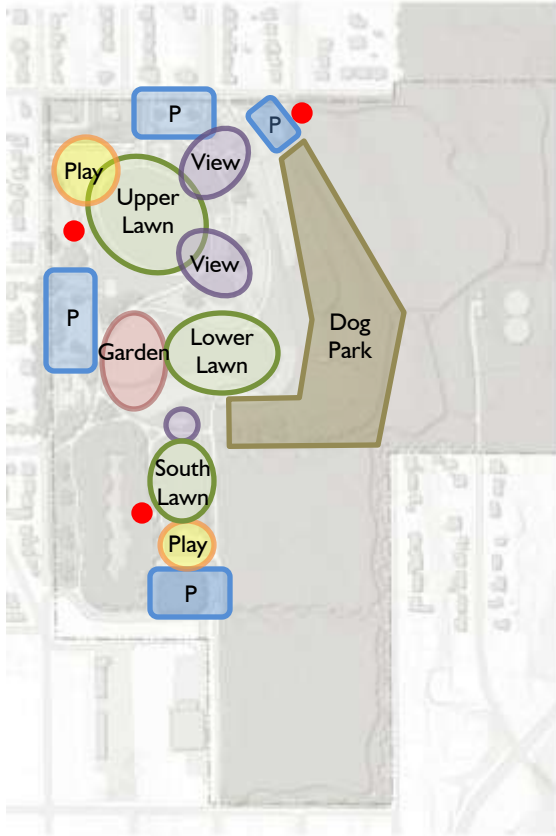


CONCEPT #2

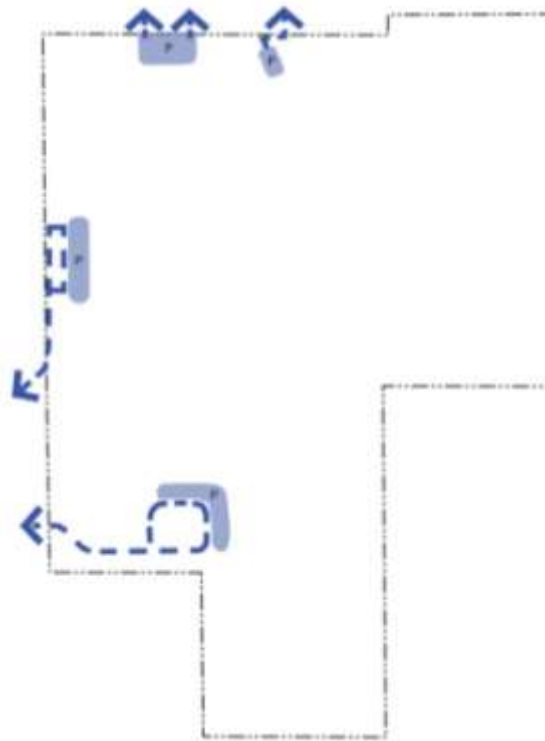


CONCEPT #3

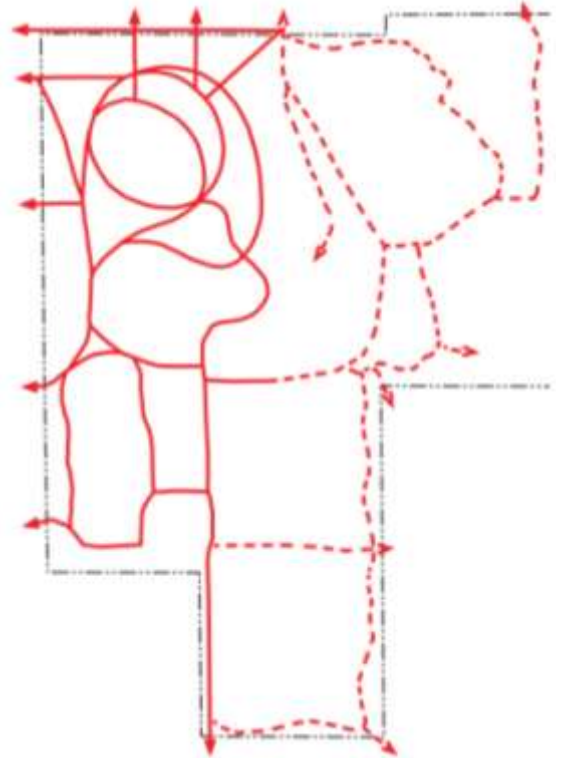
CONCEPT #1



PROGRAM
AREAS



VEHICULAR
CIRCULATION



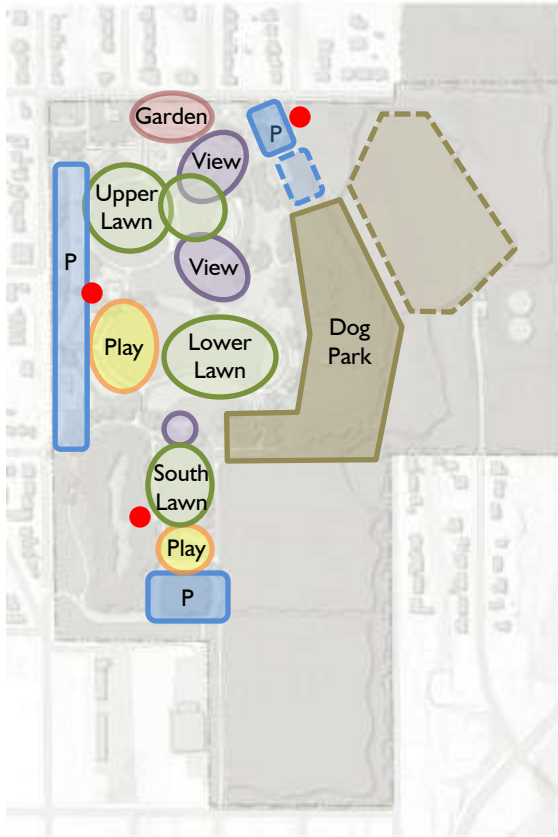
PEDESTRIAN
CIRCULATION

CONCEPT #1

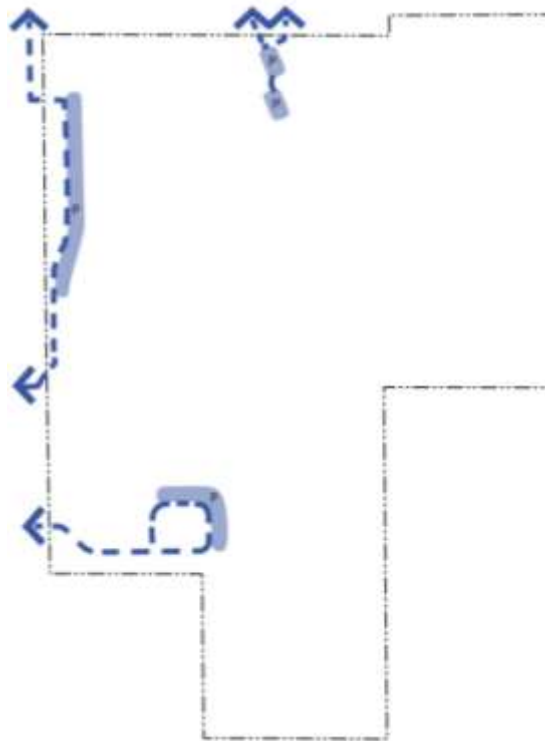
- 1 PARKING
- 2 PAVED PATH, TYP.
- 3 UNPAVED PATH, TYP.
- 4 GATHERING AREA/VIEWPOINT
- 5 COMMUNITY GARDENS
- 6 PLAY
- 7 DOG PARK
- 8 RESTROOMS
- 9 FOREST
- 10 RAIN GARDEN
- 11 GRASSES/PLANTING, TYP.
- 12 LAWN, TYP.



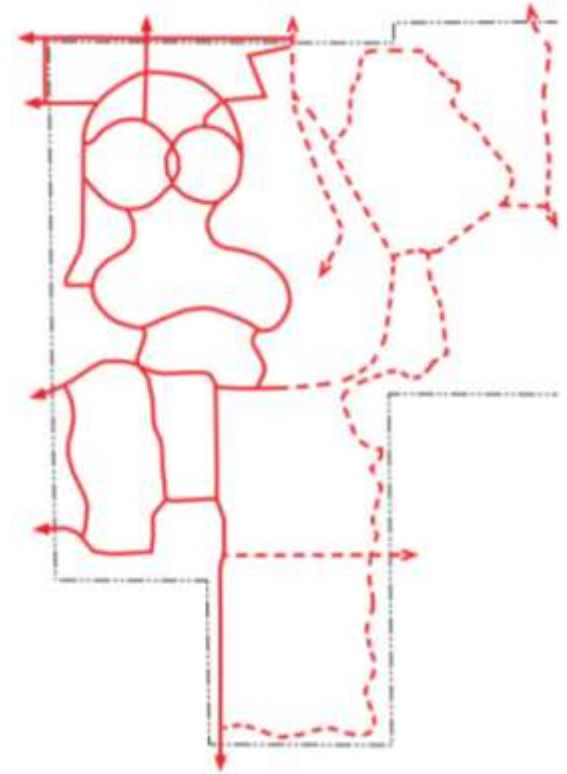
CONCEPT #2



PROGRAM
AREAS



VEHICULAR
CIRCULATION



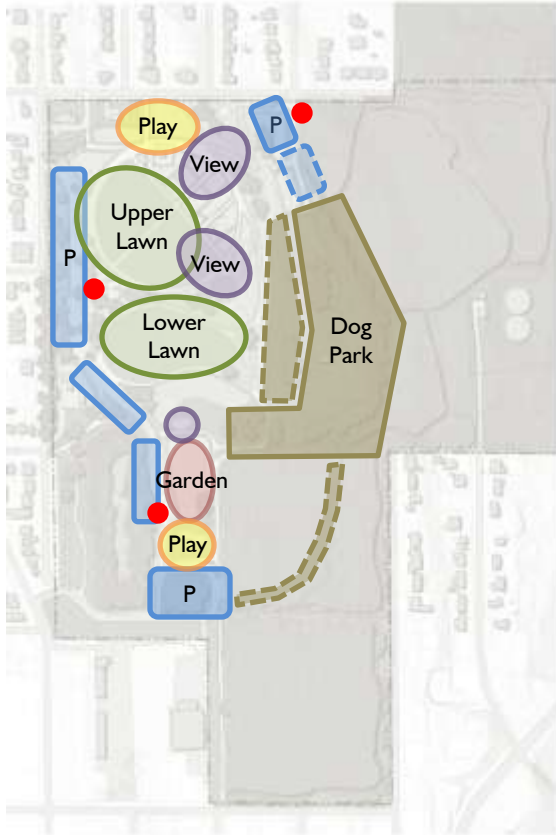
PEDESTRIAN
CIRCULATION

CONCEPT #2

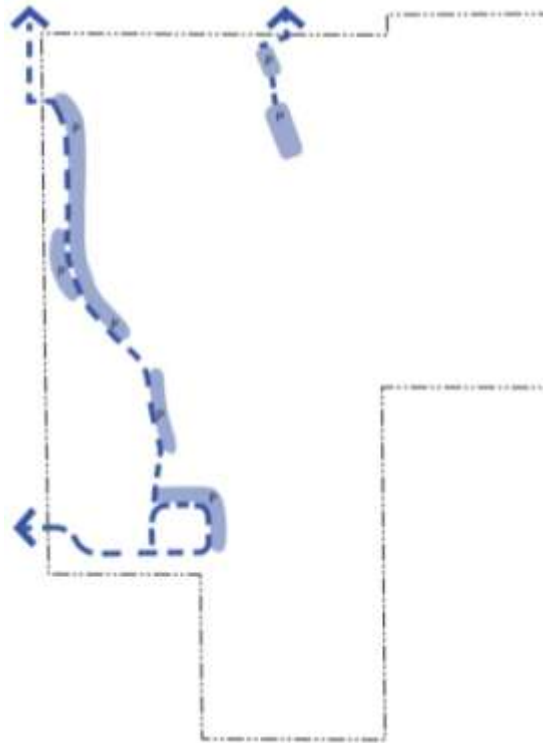
- 1 PARKING
- 2 PAVED PATH, TYP.
- 3 UNPAVED PATH, TYP.
- 4 GATHERING AREA/VIEWPOINT
- 5 COMMUNITY GARDENS
- 6 PLAY
- 7 DOG PARK
- 8 RESTROOMS
- 9 FOREST
- 10 RAIN GARDEN
- 11 GRASSES/PLANTING, TYP.
- 12 LAWN, TYP.



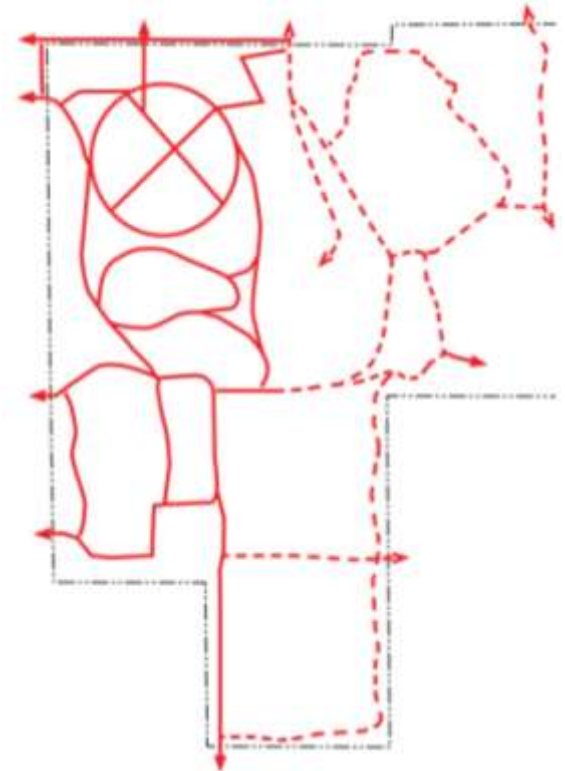
CONCEPT #3



PROGRAM
AREAS



VEHICULAR
CIRCULATION



PEDESTRIAN
CIRCULATION

CONCEPT #3

- 1 PARKING
- 2 PAVED PATH, TYP.
- 3 UNPAVED PATH, TYP.
- 4 GATHERING AREA/VIEWPOINT
- 5 COMMUNITY GARDENS
- 6 PLAY
- 7 DOG PARK
- 8 RESTROOMS
- 9 FOREST
- 10 RAIN GARDEN
- 11 GRASSES/PLANTING, TYP.
- 12 LAWN, TYP.





CONCEPT #1



CONCEPT #2



CONCEPT #3