

# Elliott Bay Seawall Project

*Waterfront Seawall Review Panel  
March 17, 2011*

# Briefing Outline and Project Area

- Process for developing alternatives
- Review of existing conditions
- Overview of seawall alternatives
- Next steps



# Preliminary Project Schedule



## Elliott Bay Seawall Project:



Seawall Alternatives Development

○ Preferred Seawall Alternative(s) selected



Seawall Design



Seawall Construction  
(S. Washington to Pine Street)

## Central Waterfront Project:



Design

Construction

## Proposed Bored Tunnel:



Design

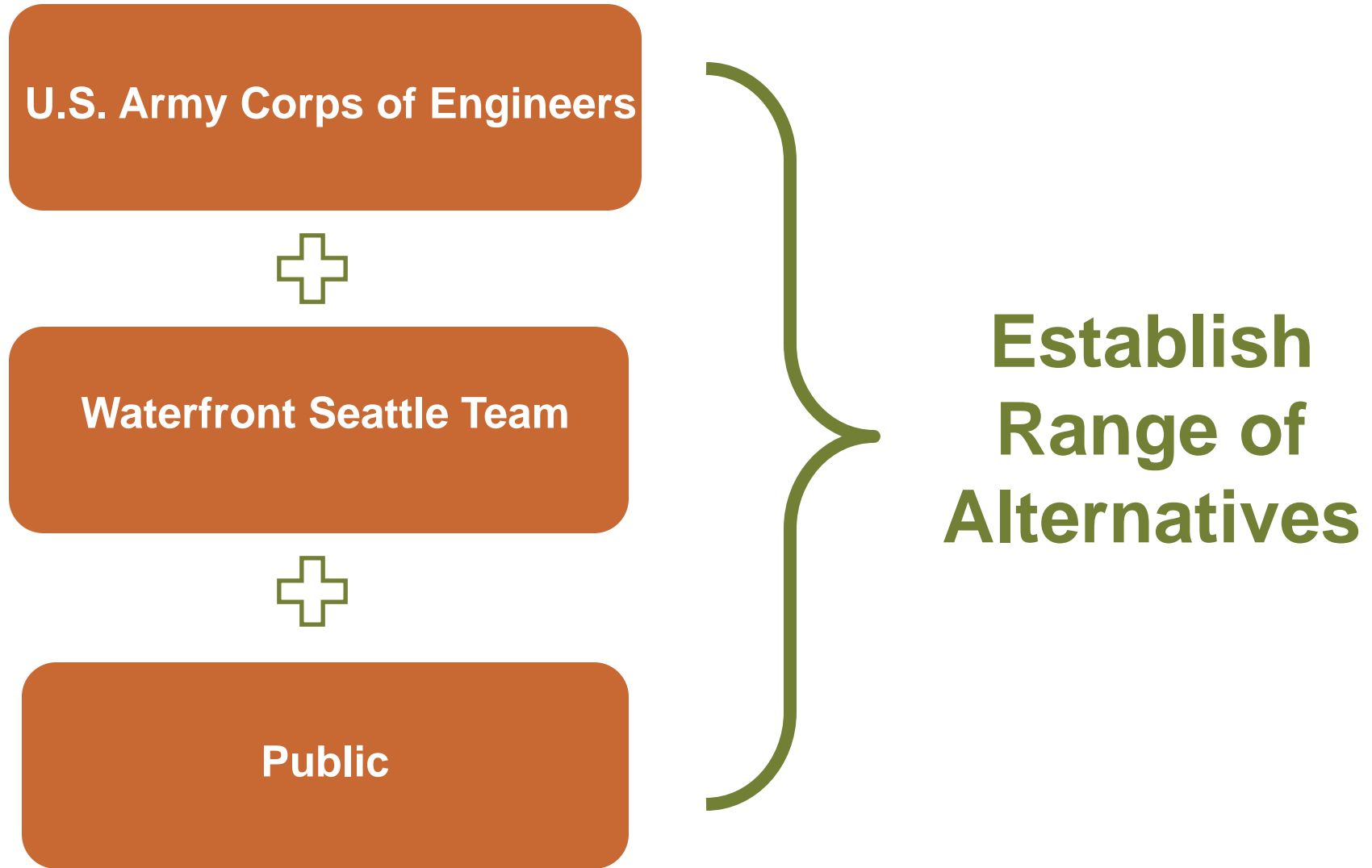
Construction

# Environmental Schedule

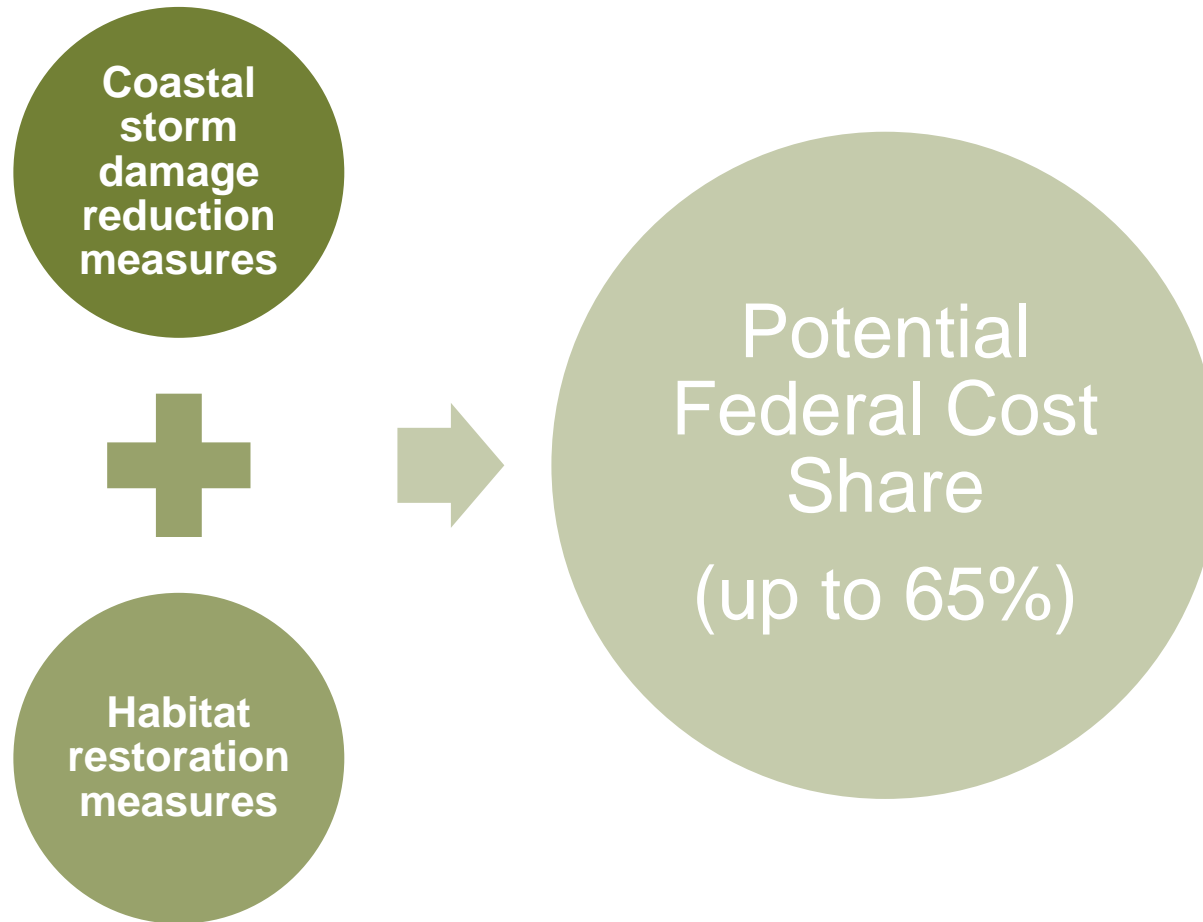
Spring (June) 2010	Winter (February) 2011	Spring 2011	Fall 2011	Winter 2012	<i>TBD*</i>	<i>TBD*</i>
Define project's Purpose and Need	<i>Establish range of alternatives for analysis</i>	<i>Write environmental discipline reports for alternatives</i>	<i>Summarize discipline reports into Draft EIS</i>	Publish Draft EIS	Publish Final EIS	Issue Record of Decision

*\*Pending schedule coordination with U.S. Army Corps of Engineers*

# Seawall Team Working in Parallel



# U.S. Army Corps Coordination





# Coordination with Waterfront Seattle

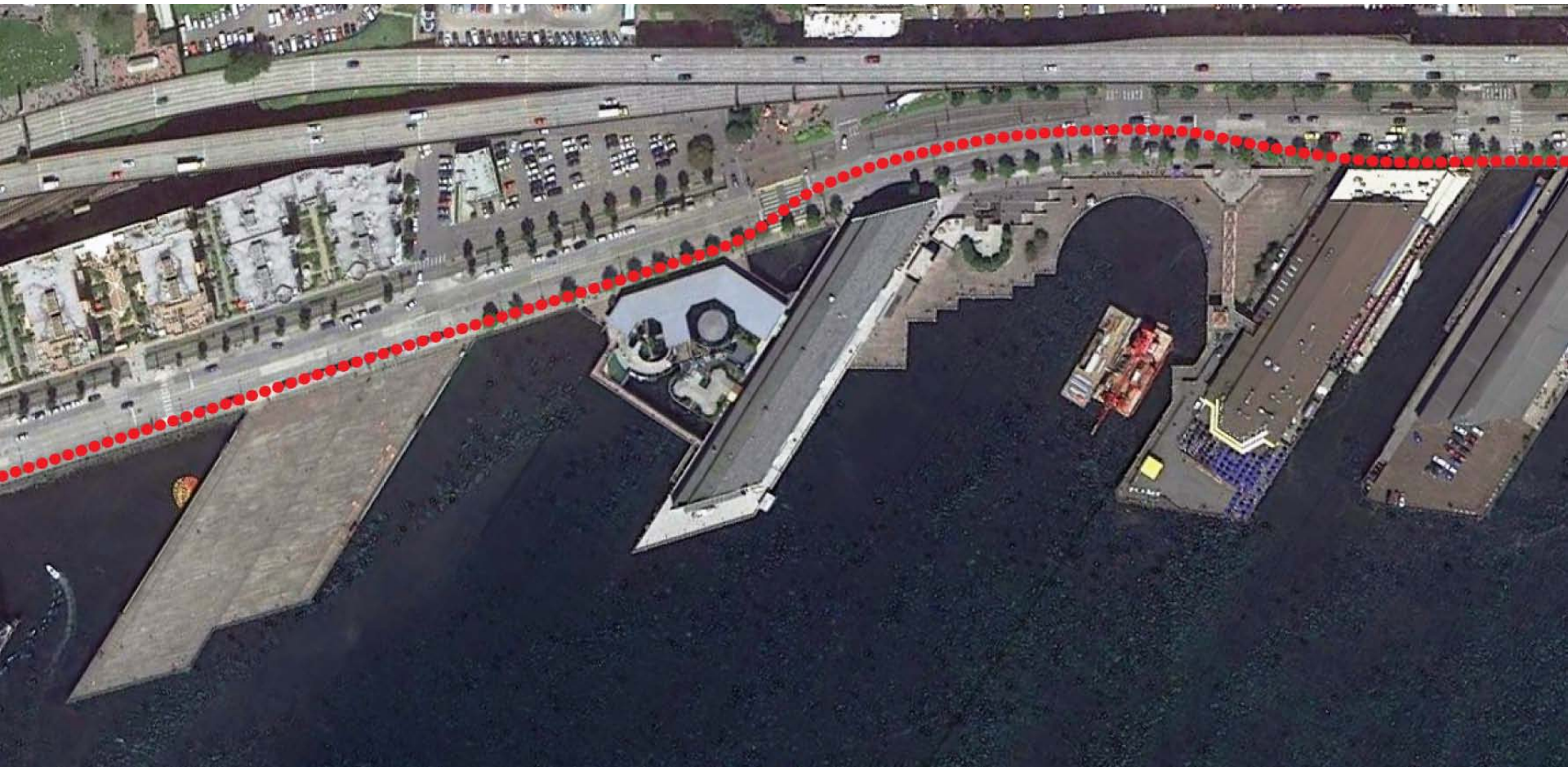


# Working with the Public

- For those most affected, *the project is well-known*
- *Seize the habitat opportunity* by using innovative and science-based enhancements
- Maintain a *responsible project budget*
- Create more *physical access to water* and public gathering space
- *Maintain transportation routes*, including continuous non-motorized pathways
- Consider *construction impacts to businesses* and tourism
- Preserve *historical and cultural significance*



# Shoreline Stabilization Systems: Flexibility





# Shoreline Stabilization: Potential Technologies

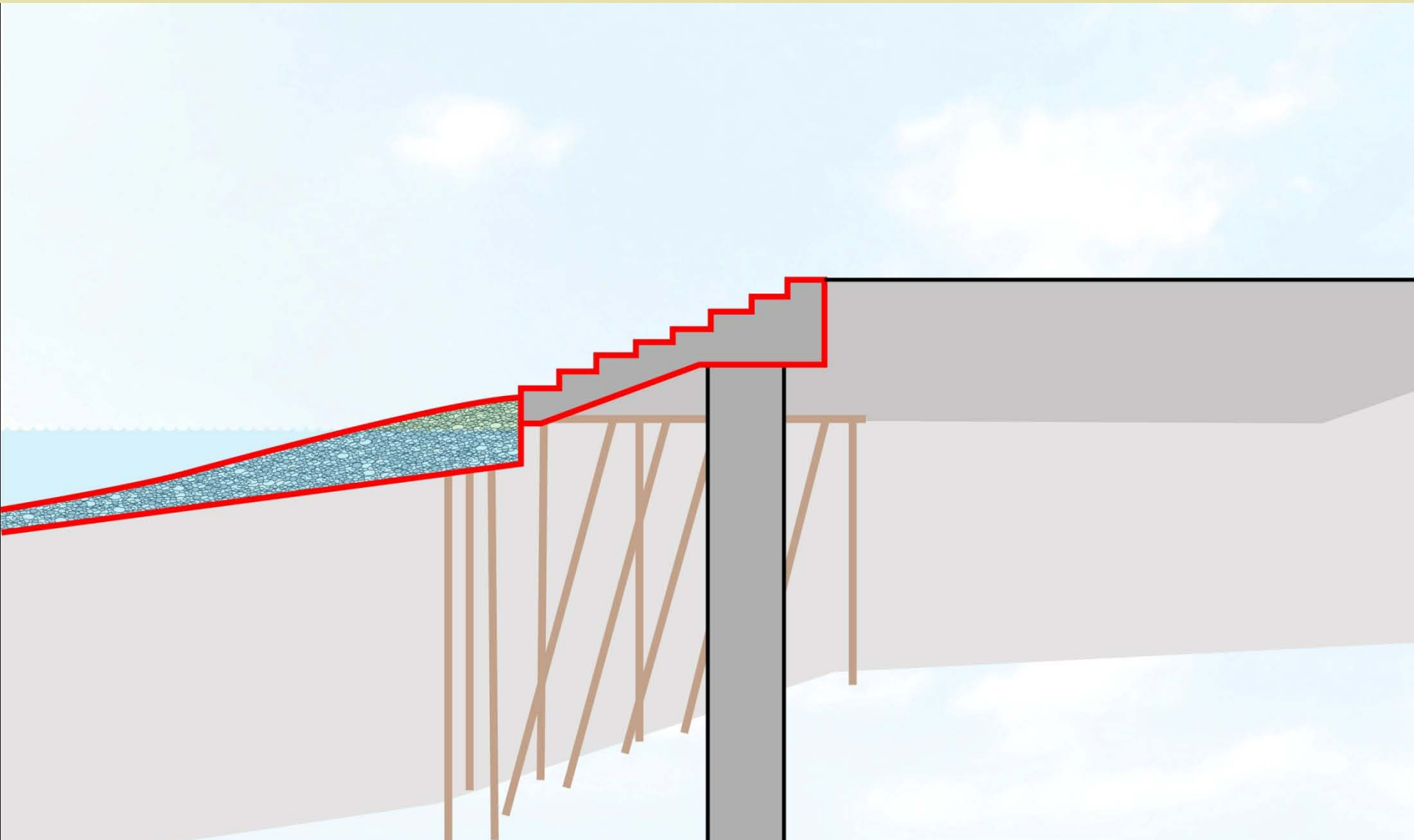
## Drilled Shaft



## Ground Improvement



# Seawall Face: Protection of Stabilization

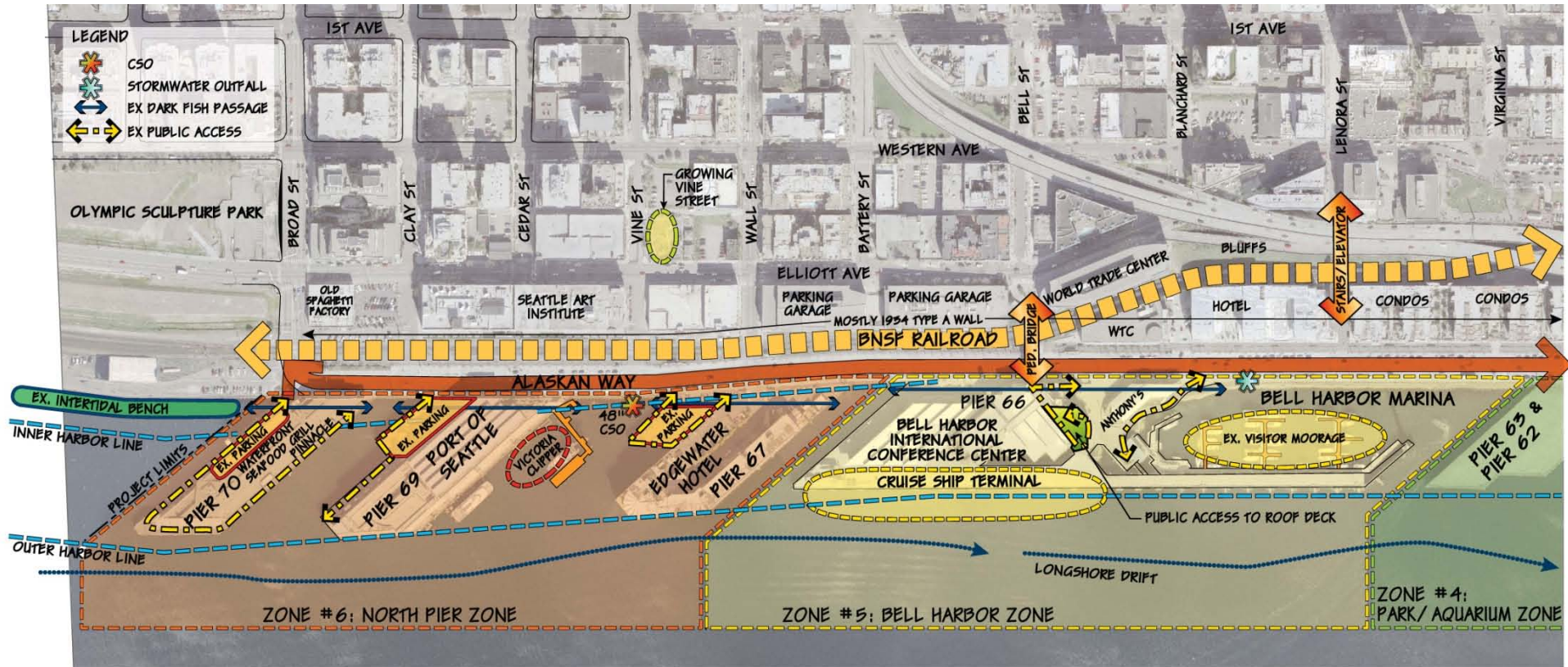




[illegible]

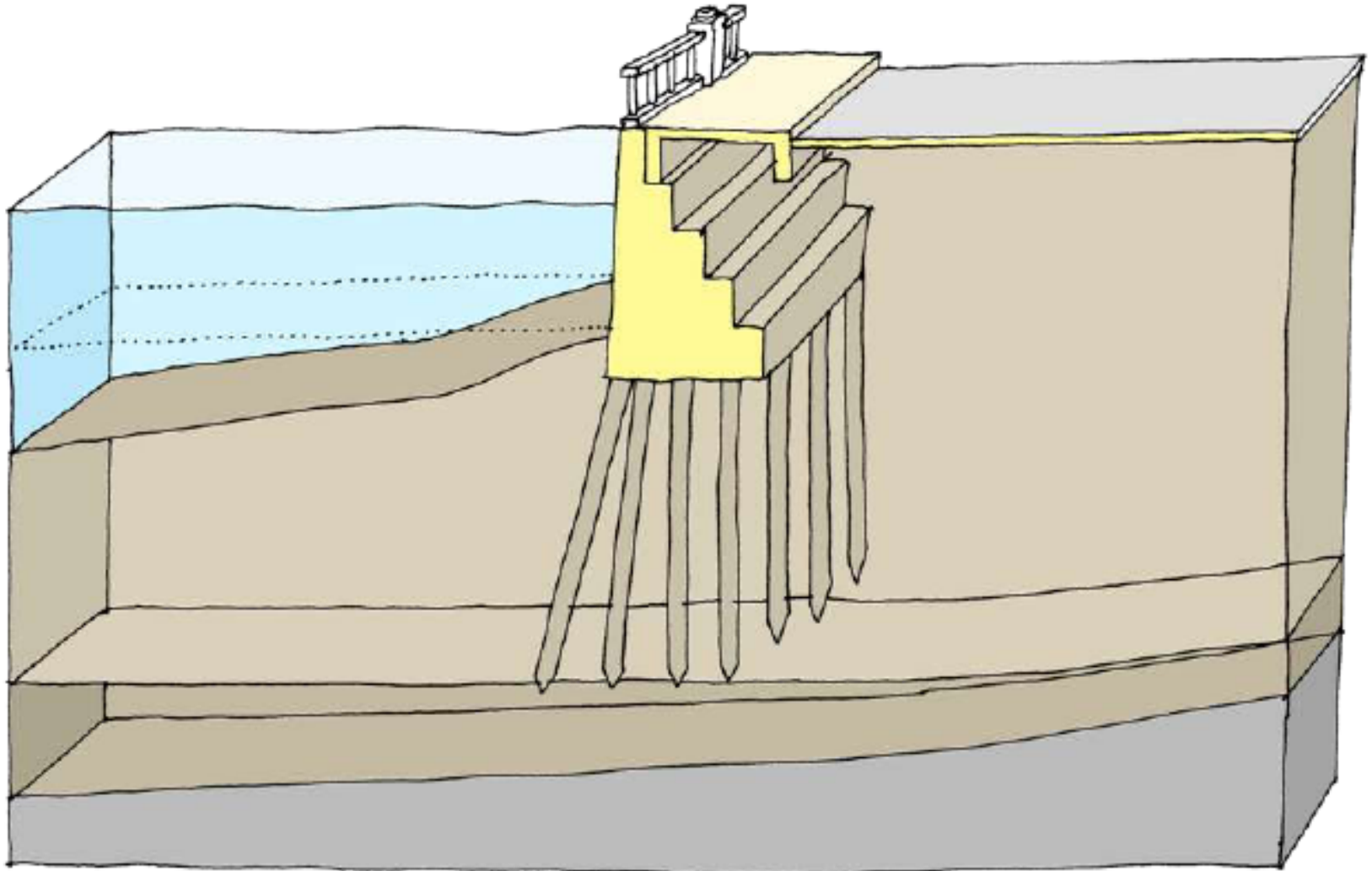


# Seawall Zones 5-6

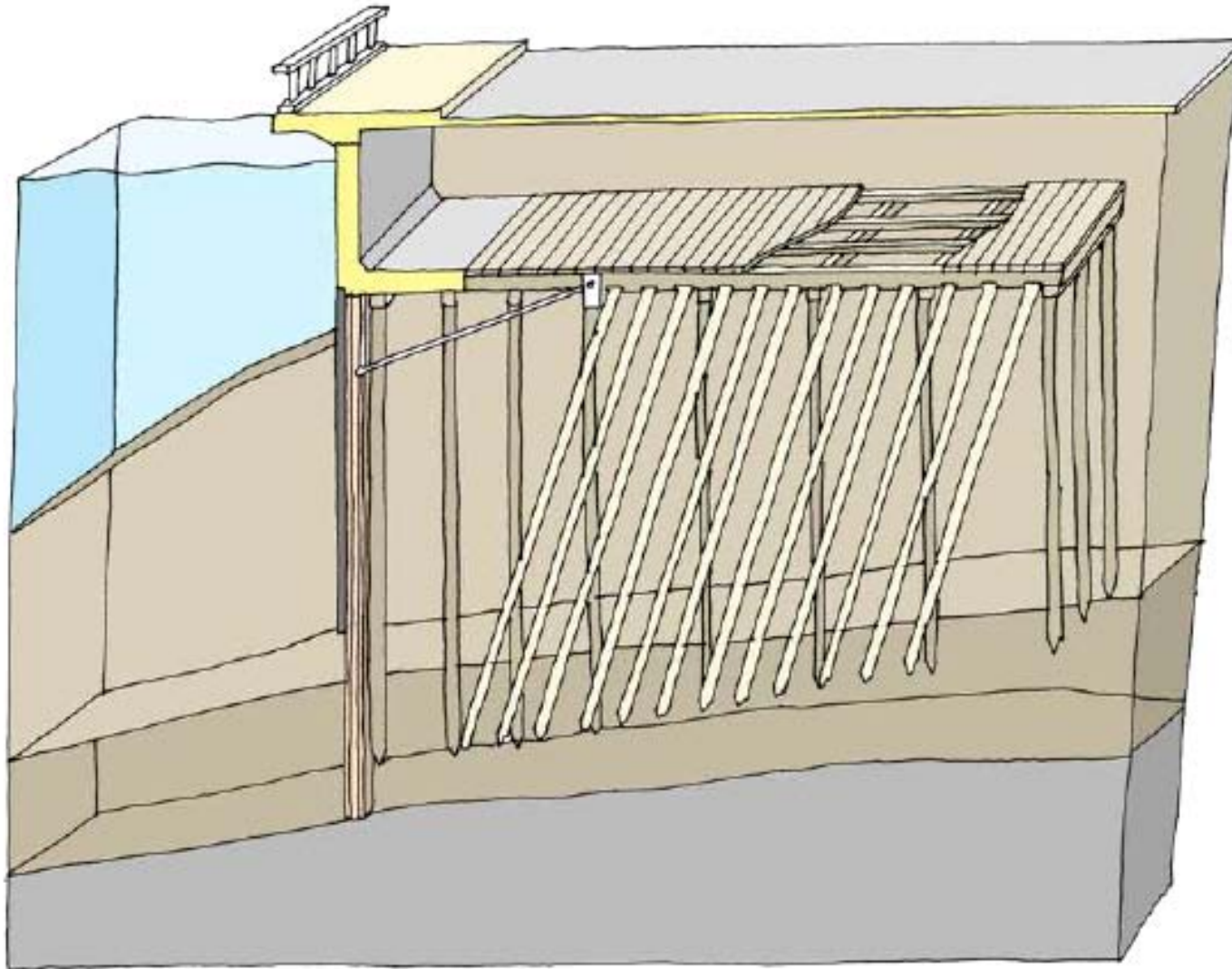




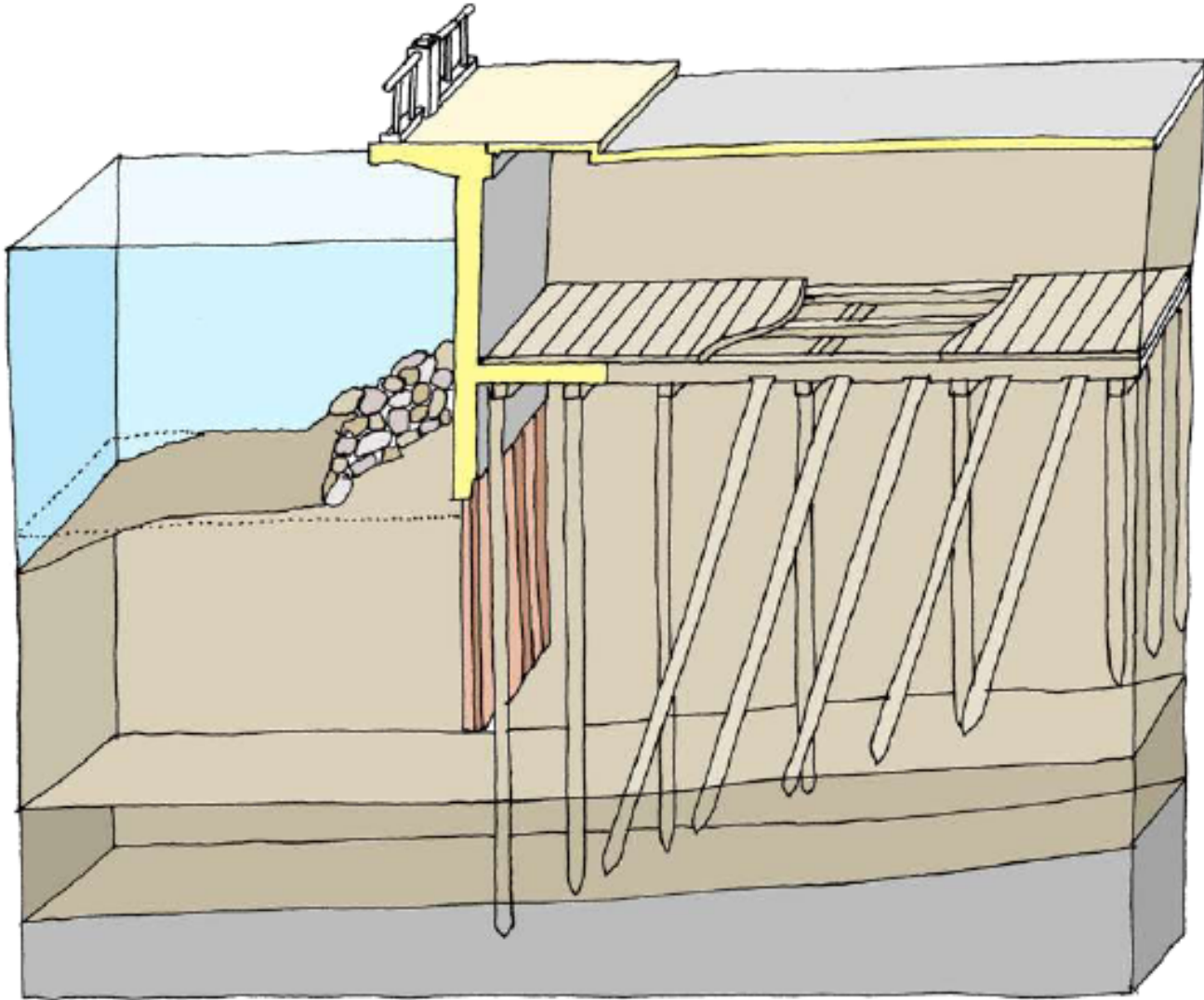
# Existing Seawall: Pioneer Square/Ferry Terminal



# Existing Seawall: Central Piers

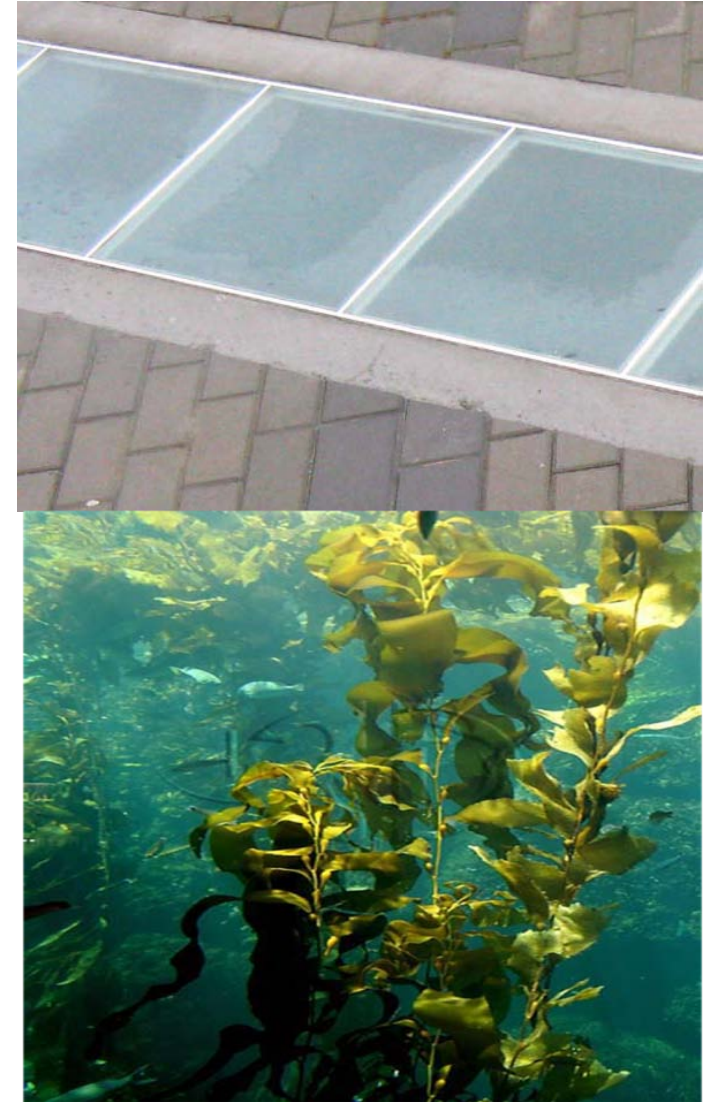


# Existing Seawall: Aquarium and Northward



# What is an Alternative?

- Wall location
- Habitat enhancement measures
- Sidewalk and railings
- Multi-use trail
- Restored roadway
- Potential early wins
- Flexibility for Waterfront Seattle





# Existing and Proposed Seawall Alignments





# Defining Alternatives

	Alternative	Zone 6 North Pier	Zone 5 Bell Harbor	Zone 4 Park/Aquarium	Zone 3 Commercial Piers	Zone 2 Ferry Terminal	Zone 1 Pioneer Square
Wall Location	Ex	0'	0'	0'	0'	0'	0'
	A	-9'	-9'	-9'	+3'	-15'	0'
	B	-9'	-9'	-75'	-30'	-15'	-15'
Nearshore Habitat	Aquatic	Ex	Minimal habitat	Habitat bench	Minimal habitat	Minimal habitat	<ul style="list-style-type: none"> <li>Minimal habitat</li> <li>Advantageous bathymetry</li> </ul>
		A	<ul style="list-style-type: none"> <li>Cobble reef</li> <li>Substrate enhancement</li> <li>Habitat bench</li> <li>Light penetrating surface</li> </ul>	<ul style="list-style-type: none"> <li>Habitat bench improvement</li> <li>Light penetrating surface</li> </ul>	<ul style="list-style-type: none"> <li>Cobble reef</li> <li>Substrate enhancement</li> <li>Habitat bench</li> <li>Light penetrating surface</li> </ul>	<ul style="list-style-type: none"> <li>Habitat bench</li> <li>Light penetrating surface</li> </ul>	<ul style="list-style-type: none"> <li>Cobble reef</li> <li>Substrate enhancement</li> </ul>
		B	Same as A	Same as A	Same as A with: <ul style="list-style-type: none"> <li>Natural light</li> <li>Intertidal zone</li> </ul>	Same as A	Same as A with: <ul style="list-style-type: none"> <li>Improved habitat</li> <li>Intertidal zone</li> <li>Light penetrating surface</li> </ul>
	Riparian	Ex	none	none	none	none	none
		A	Base planting	Base planting	Base planting	none	Base planting
		B	Additional planting opportunities	Additional planting opportunities	Additional planting opportunities	none	Additional planting opportunities
Restored Public Amenities	Ex	<ul style="list-style-type: none"> <li>Sidewalk</li> <li>Multi-use trail</li> </ul>	<ul style="list-style-type: none"> <li>Sidewalk</li> <li>Multi-use trail</li> <li>Public short-stay marina</li> </ul>	<ul style="list-style-type: none"> <li>Sidewalk</li> <li>Multi-use trail</li> <li>Waterfront Park</li> <li>Pier 62/63</li> </ul>	<ul style="list-style-type: none"> <li>Sidewalk</li> <li>Multi-use trail</li> </ul>	<ul style="list-style-type: none"> <li>Sidewalk</li> <li>Multi-use trail</li> <li>Public ferry terminal</li> </ul>	<ul style="list-style-type: none"> <li>Sidewalk</li> <li>Multi-use trail</li> <li>Washington St Boat Landing</li> </ul>
	A	<ul style="list-style-type: none"> <li>Restored sidewalk</li> <li>Multi-use trail</li> <li>Potential early wins</li> </ul>	<ul style="list-style-type: none"> <li>Restored sidewalk</li> <li>Restored multi-use trail</li> <li>Public short-stay marina</li> <li>Potential early wins</li> </ul>	<ul style="list-style-type: none"> <li>Restored sidewalk</li> <li>Restored multi-use trail</li> <li>Waterfront Park (existing)</li> <li>Pier 62/63 (existing)</li> <li>Potential early wins</li> </ul>	<ul style="list-style-type: none"> <li>Restored sidewalk</li> <li>Restored multi-use trail</li> <li>Potential early wins</li> </ul>	<ul style="list-style-type: none"> <li>Restored sidewalk</li> <li>Restored multi-use trail</li> <li>Public ferry terminal</li> <li>Potential early wins</li> </ul>	<ul style="list-style-type: none"> <li>Restored sidewalk</li> <li>Restored multi-use trail</li> <li>Restored Washington St Boat Landing</li> <li>Potential early wins</li> </ul>
	B	Same as A	Same as A	Same as A	Same as A	Same as A	Same as A

# Schedule of Briefings and Meetings

## March

## Activities

March 17	Seattle Design and Planning Commissions
March 22	Central Waterfront Stakeholders Meeting #3
March 22	Central Waterfront Finance and Partnerships Subcommittee
March 23	Central Waterfront Design Oversight Subcommittee

## April

## Activities

April 12	Central Waterfront Executive Committee
April 12	Central Waterfront Committee
April 14	Seattle Design and Planning Commissions
Late April	City Council Briefing (tentative)

# Contact Information

- **Email:** [seawall@seattle.gov](mailto:seawall@seattle.gov)
- **Website:**  
<http://www.seattle.gov/transportation/seawall.htm>
- **Phone:** Stephanie Brown, SDOT: 206-386-4635  
Jennifer Wieland, SDOT: 206-733-9970