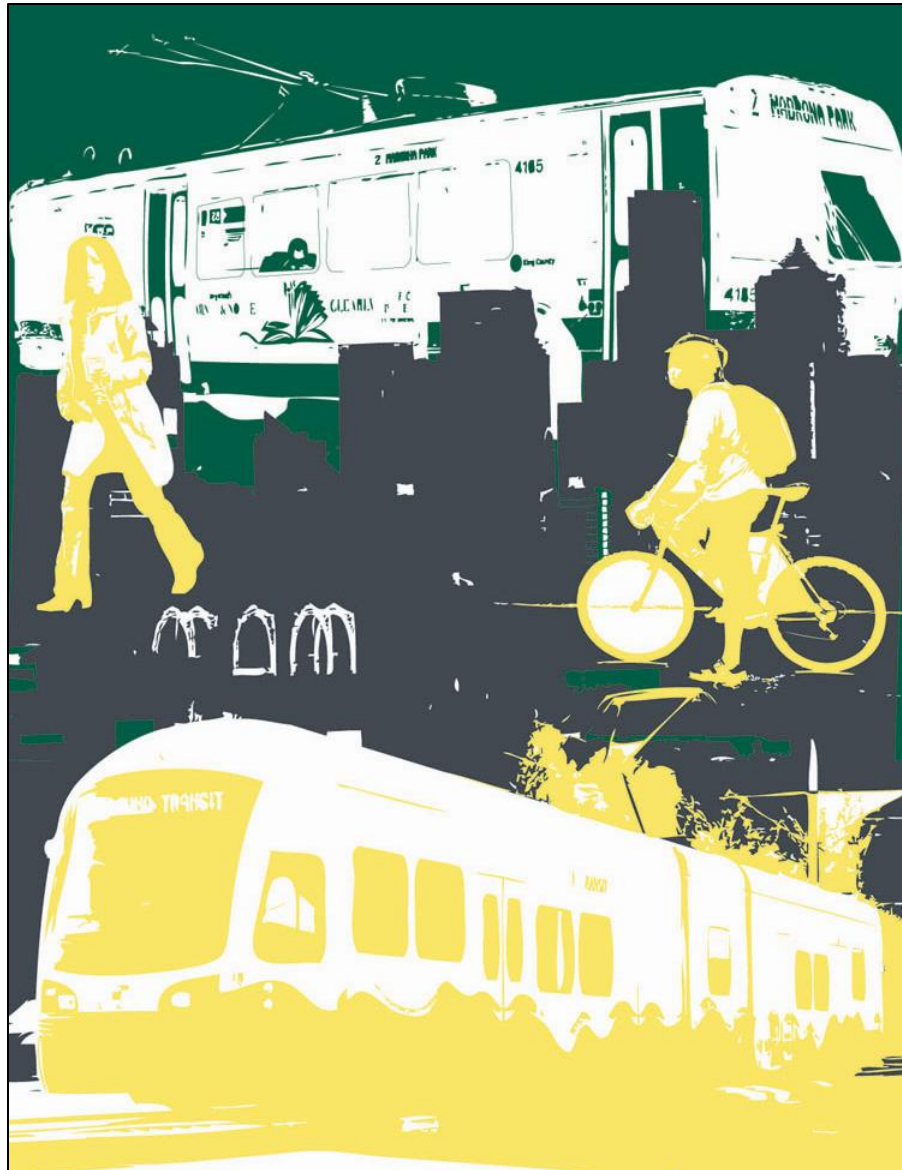


# Seattle Transit Master Plan



## Seattle Design Commission

*Briefing*

December 2, 2010

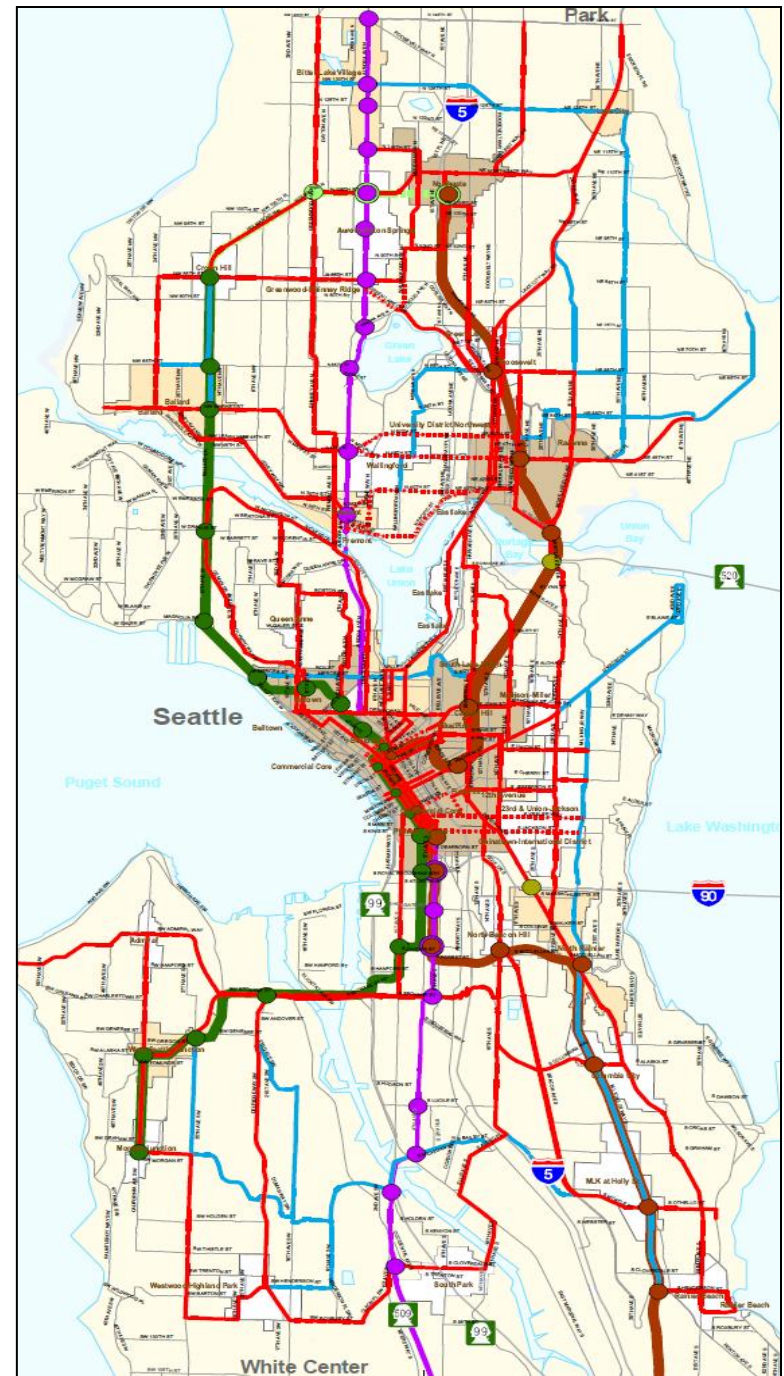
Tony Mazzella & Jennifer Wieland  
SDOT Policy and Planning



**WALK.**  
**BIKE.**  
**RIDE.**

# Seattle Transit Plan '05

- Framed transit vision for Seattle
- Established ability to negotiate with Metro
- Updated transit classifications
- Linked urban villages along key routes (UVTN)
- Estimated funding needed for additional service
- Set performance measures and goals



# Emerging Issues

- Update policy framework
- Document current conditions
- Prioritize network for investments
- Explore funding resources
- Address city's role in providing transit service



# Vision and Goals

- Make it easier and more desirable for people to take transit
- Respond to the needs of vulnerable populations
- Meet sustainability, growth management, and economic goals
- Create great places where modes connect
- Balance implementation with constraints



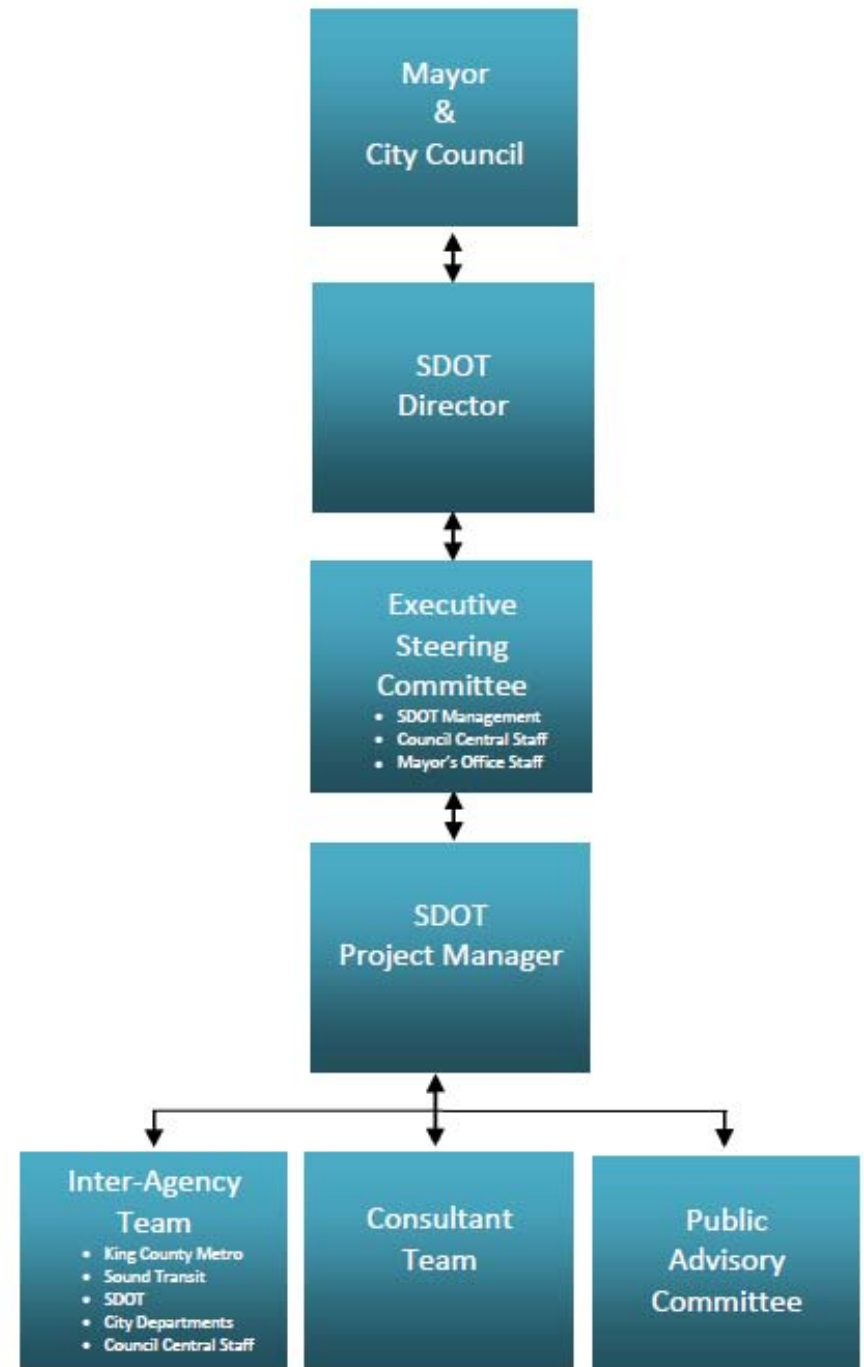
# TMP Work Plan

- Briefing Book
- Evaluation framework
- Corridor prioritization
- Modal assignment
- Funding scenarios
- Capital project lists
- Policy and programmatic actions
- Continuous public outreach

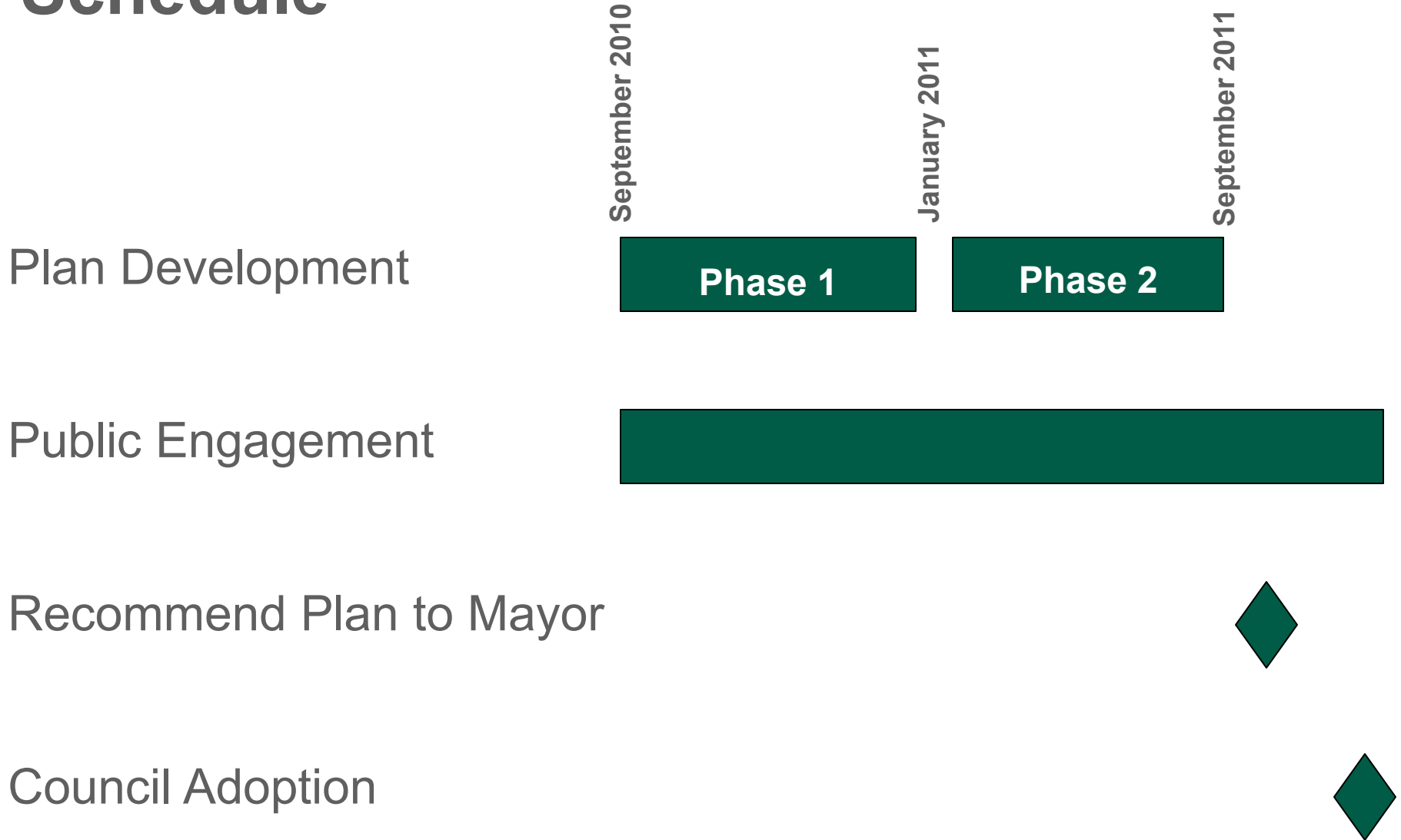


# Project Organization

- Consultant team led by Nelson\Nygaard
- Regular interactions with public and technical advisory teams
- Council and Mayoral engagement in and oversight of project



# Schedule

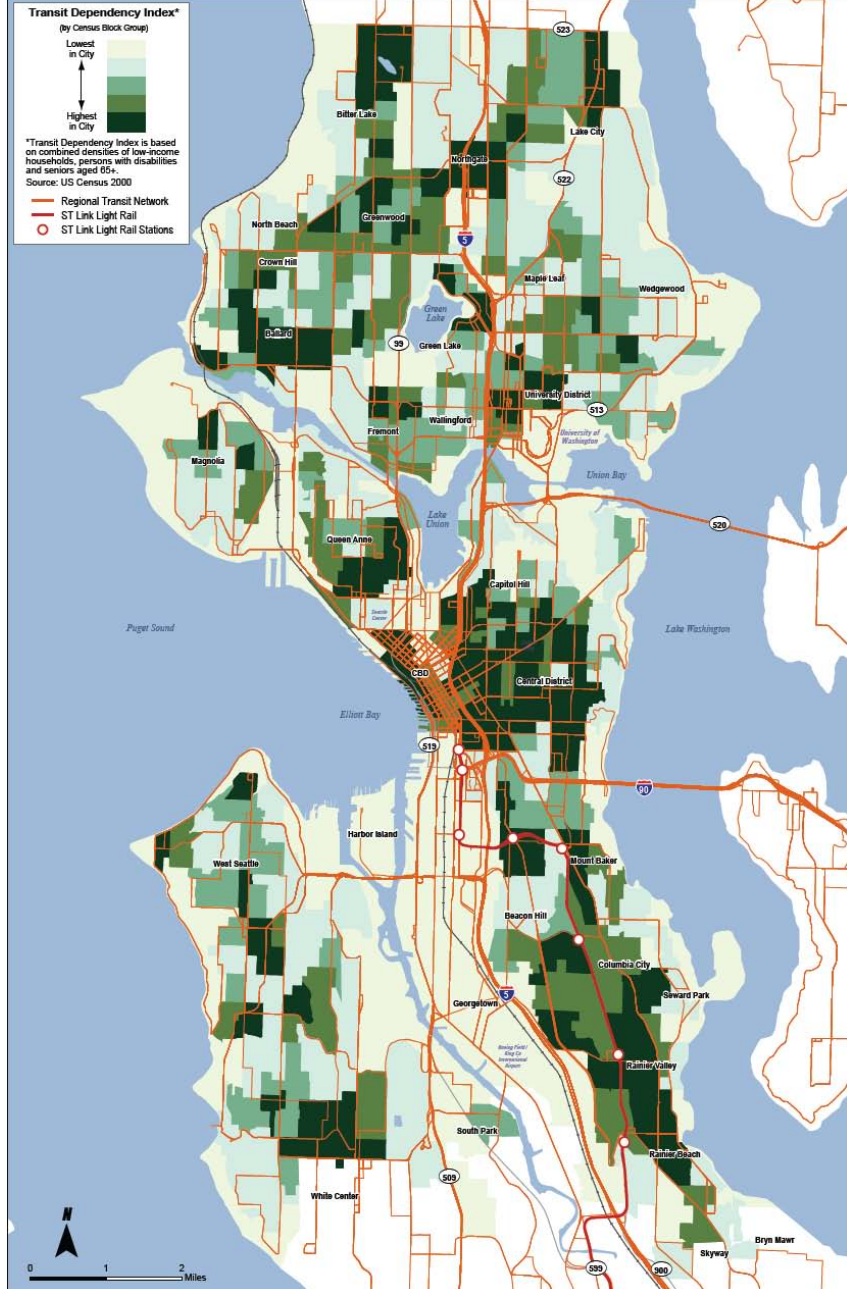
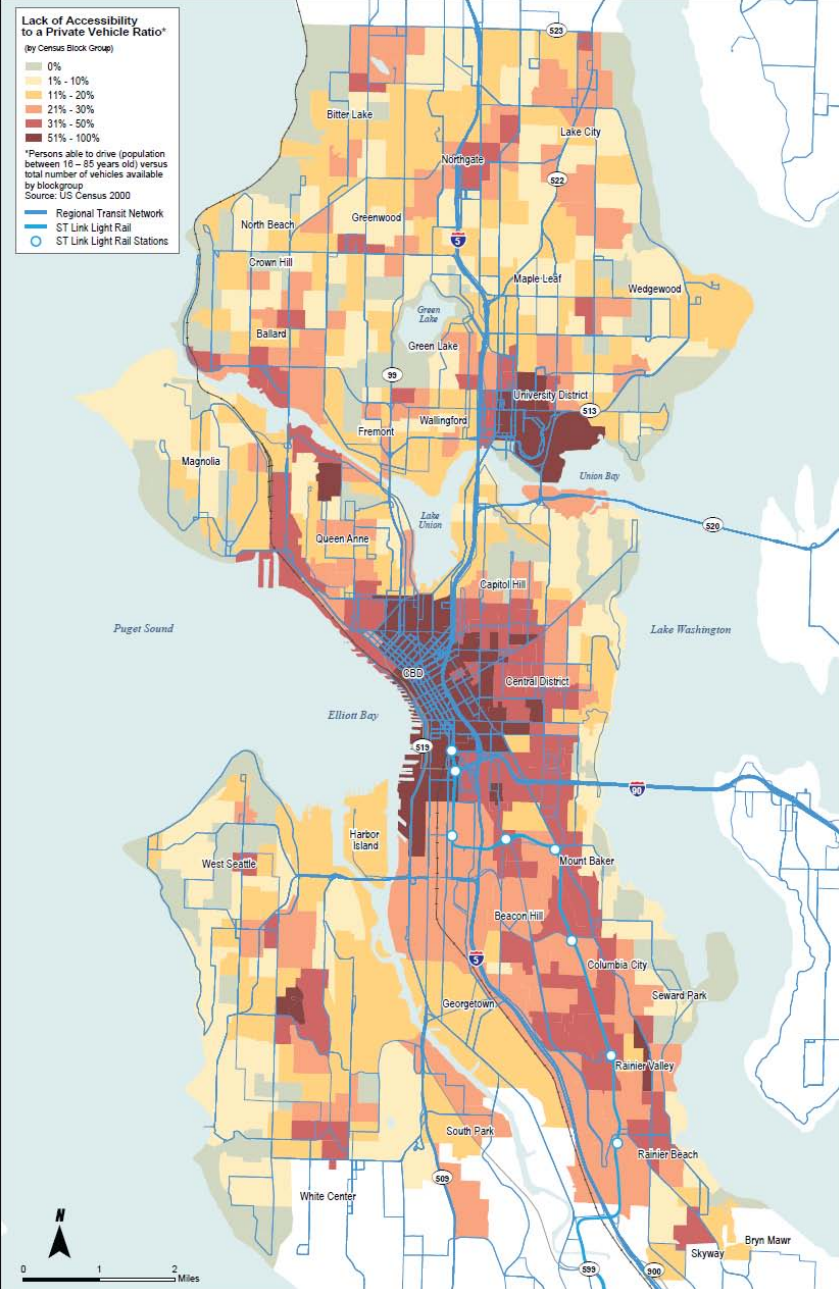




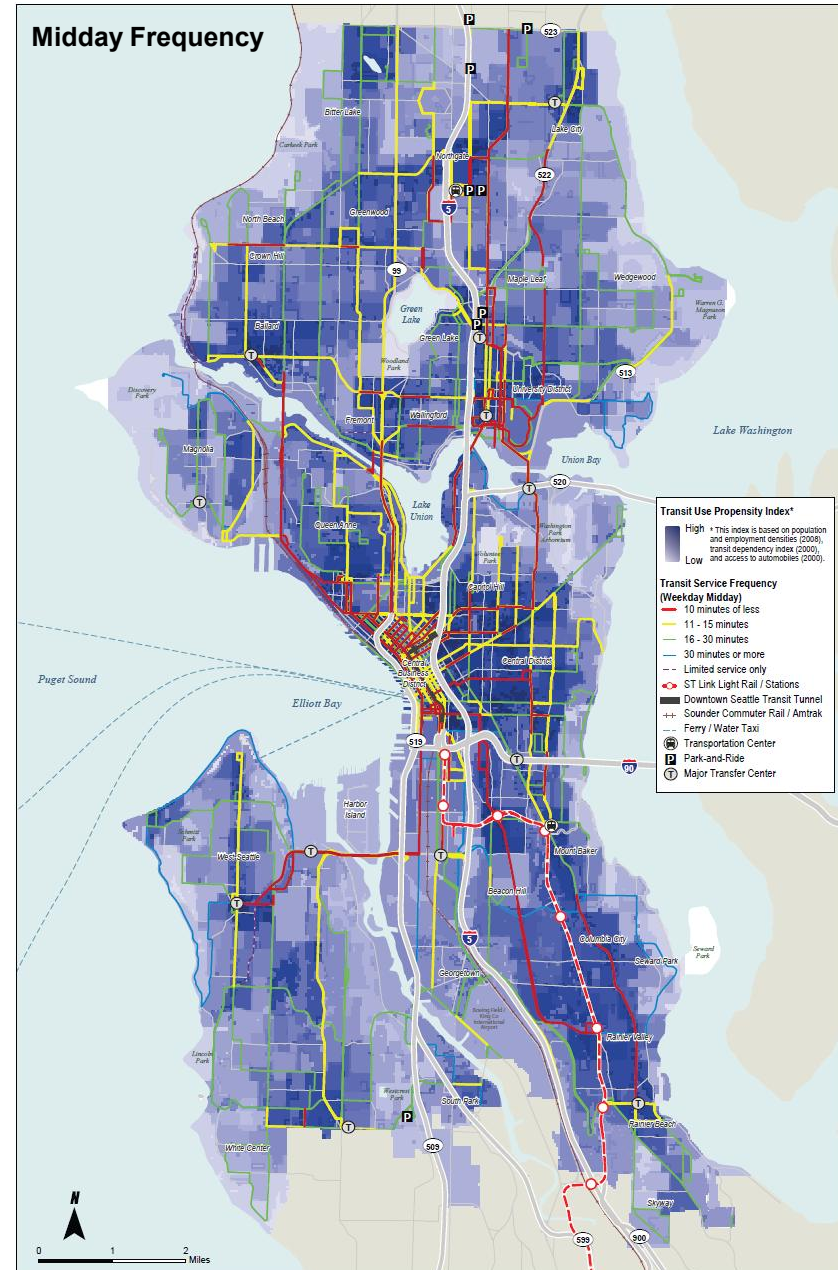
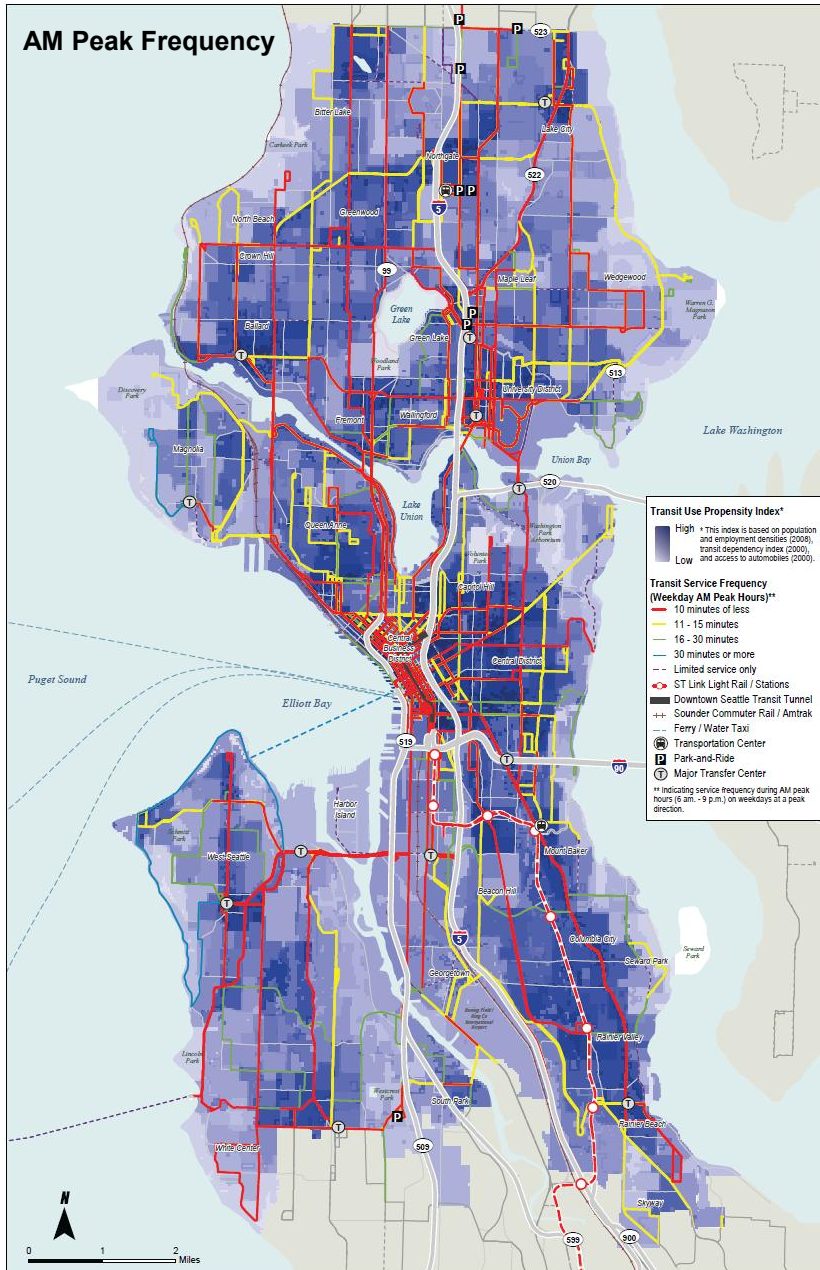
# Market Analysis



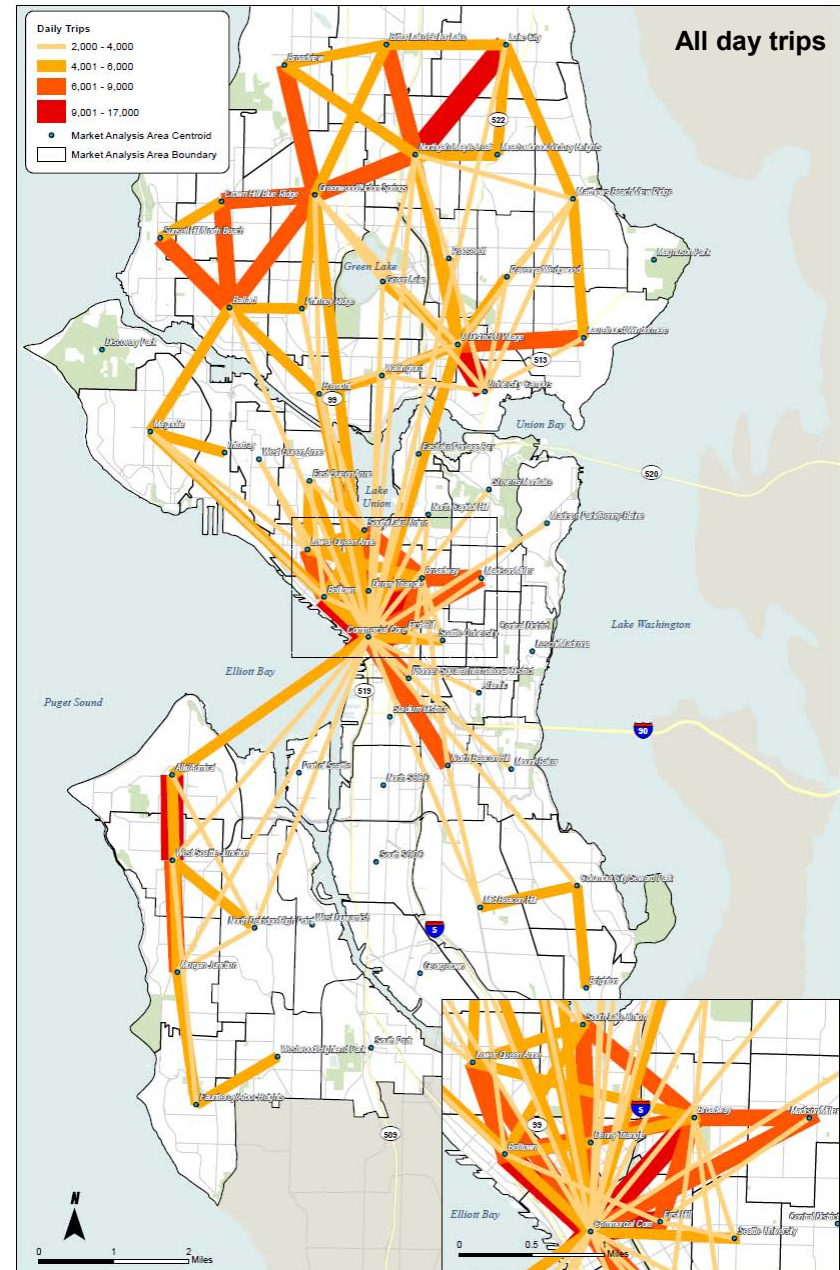
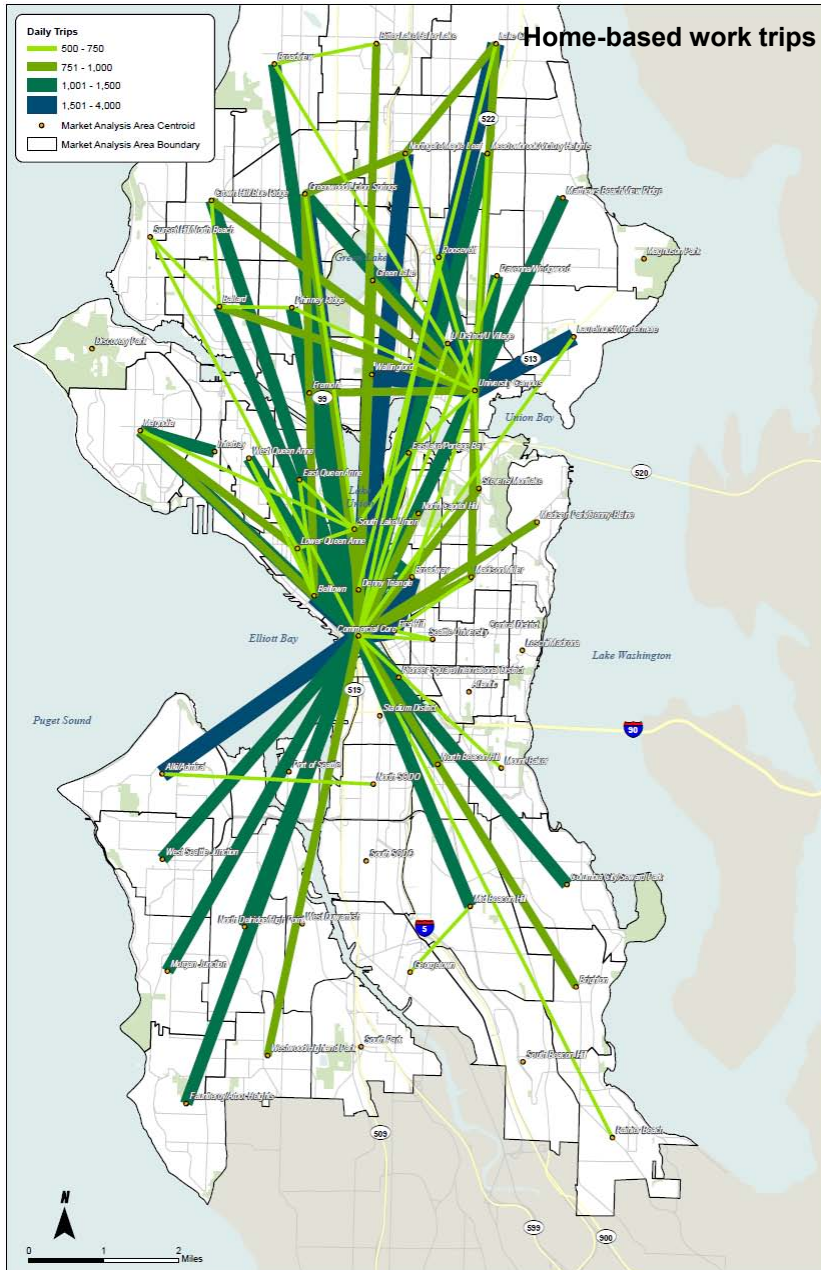
# Auto Accessibility and Transit Dependency

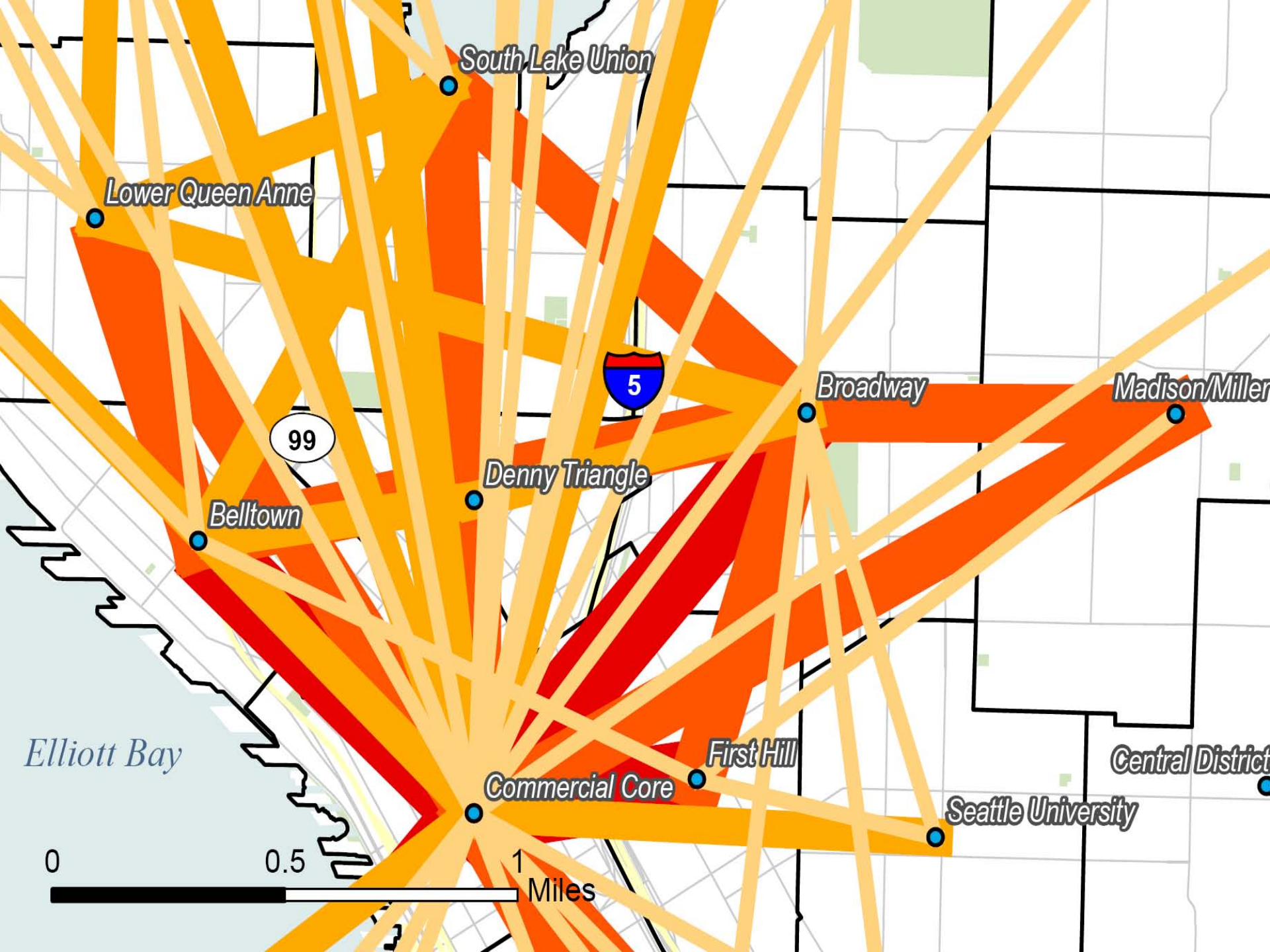


# Service Frequency vs. Transit Use Index



# Major OD Travel Demand in Seattle (2010)





# Technologies and Modes

NO STOPPING  
↔

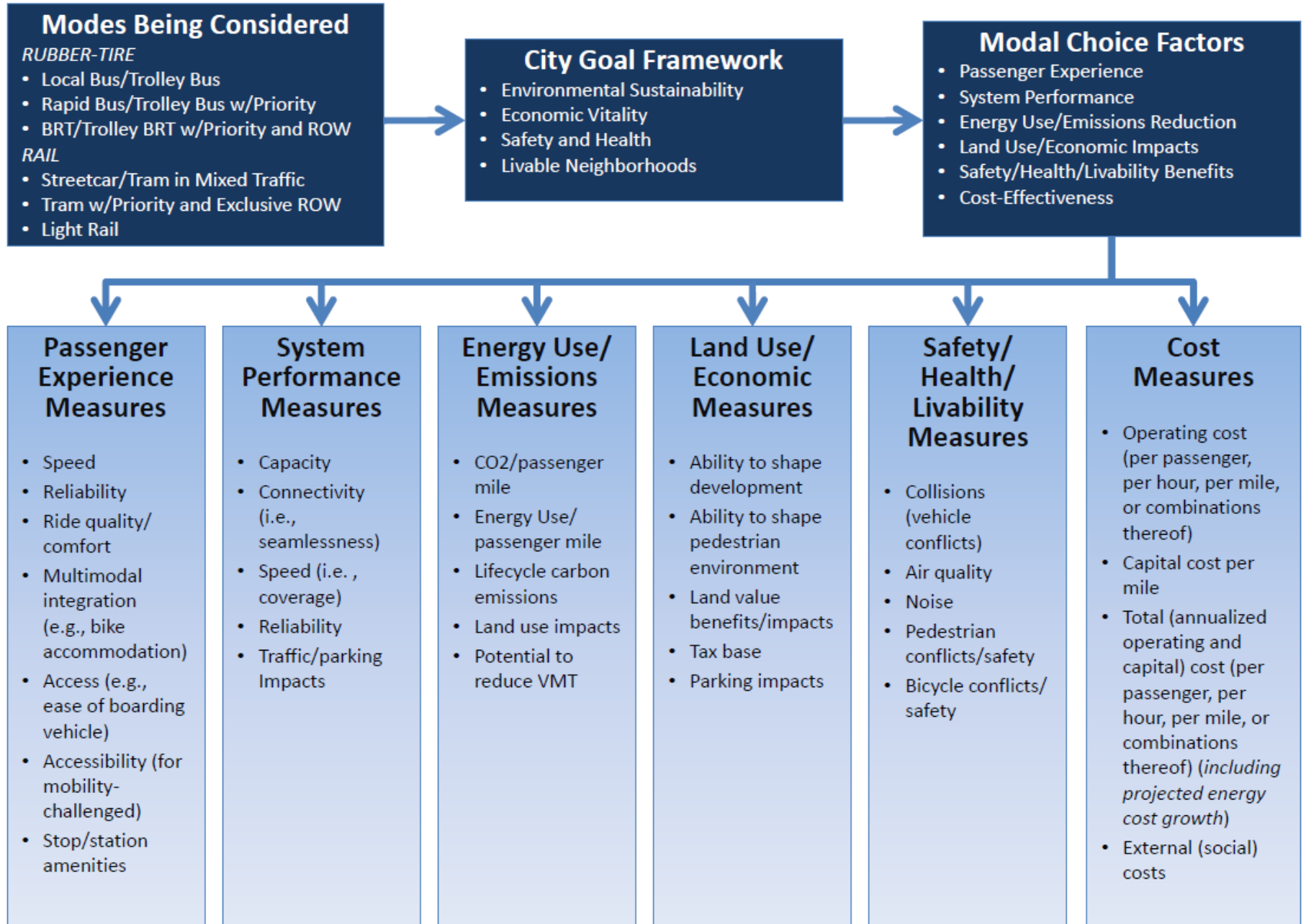
P  
PARKING

DO NOT  
DRIVE  
ON  
TRACKS



Paid Fare Zone  
Valid Fare Required  
Proceed to ticket  
machine ahead

# Framework for Urban Transit Mode Review



# Local Buses and Trolleys

- Operate in mixed traffic
- Frequent, curbside stops
- Limited signal priority
- Various fuel sources, including electric trolleys



# Express Bus

- Long-haul routes
- Peak hour connections
- Center-to-center or point-to-point trips
- Often uses freeways





# Rapid Bus

- Features to improve performance (e.g., ITS, vehicle characteristics)
- Segregated ROW (e.g., Bus Only lane)
- Real-time information
- Wide stop spacing



# Bus Rapid Transit

- Exclusive ROW (“busway”)
- ITS features
- Special design and branding
- Off-board payment



# Streetcar or Tram

- Mixed, with traffic or in separate ROW
- Closely spaced stops
- Passenger “comfort” features



# Light Rail

- Exclusive ROW
- Street level or grade separated
- ITS features
- Higher speed than streetcar / tram



# Commuter Rail

- Exclusive ROW (or shared with freight)
- High speed
- Limited stop





# Transit as Placemaking

# Downtown Circulation

- Connectivity between services
- Access to destinations
- Frequent (no schedule) service



# System Legibility

- Inter-modal connections
- Clear and relevant information





# Seattle's Designated Hubs



# Westlake Hub



# Westlake Hub



# King Street Station



# King Street Station



# Portland







PIONEER COURTHOUSE

AIDS WALK  
PORTLAND

AIDS WALK  
PORTLAND

Pioneer  
Courthouse  
SW 6th  
Northbound

310  
EXPON CENTER

MAX  
Pioneer  
Courthouse  
SW 6th  
Northbound



# Denver



# San Francisco

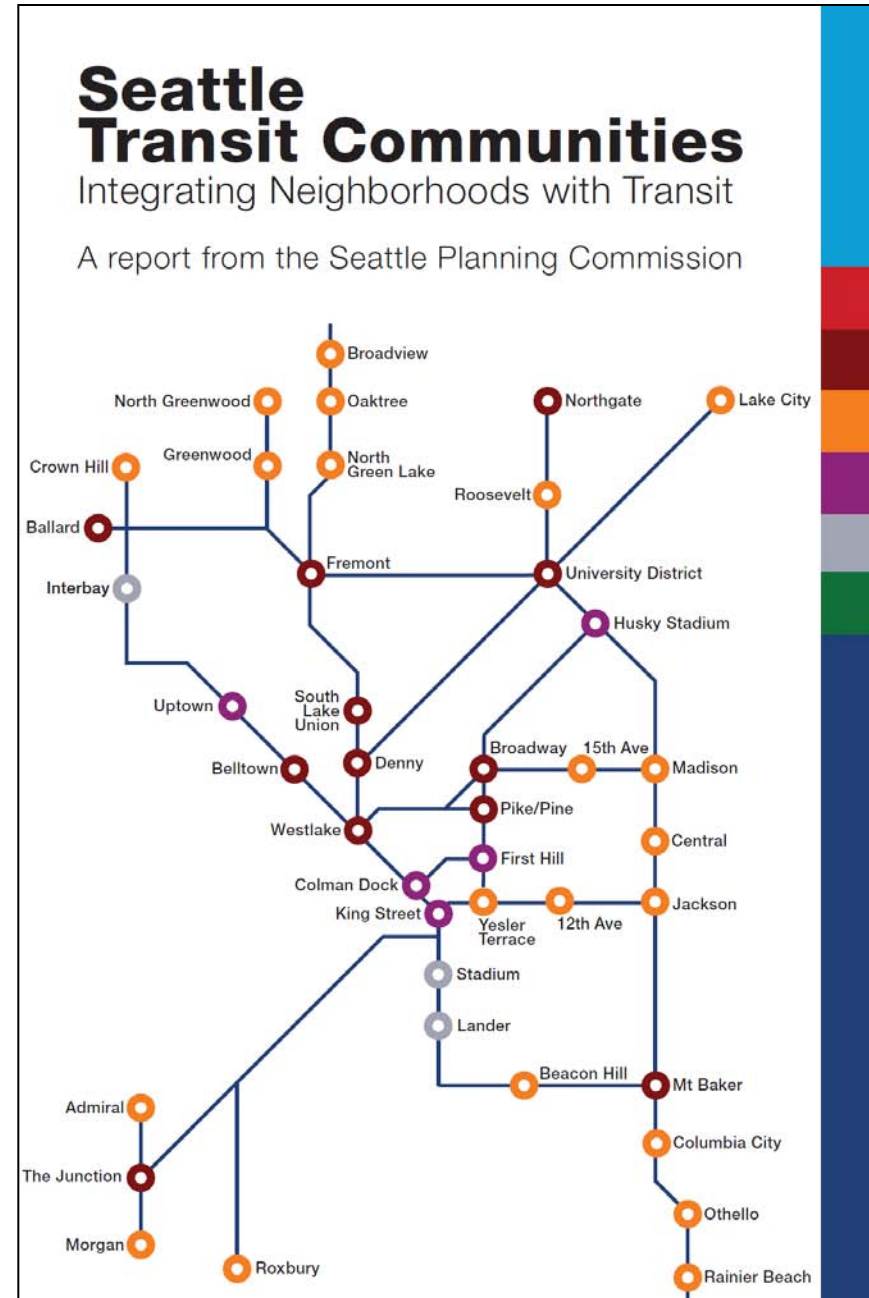






# Future Seattle Hubs

- Outside of center city
- Multi-modal interactions
- Transportation and land use connections

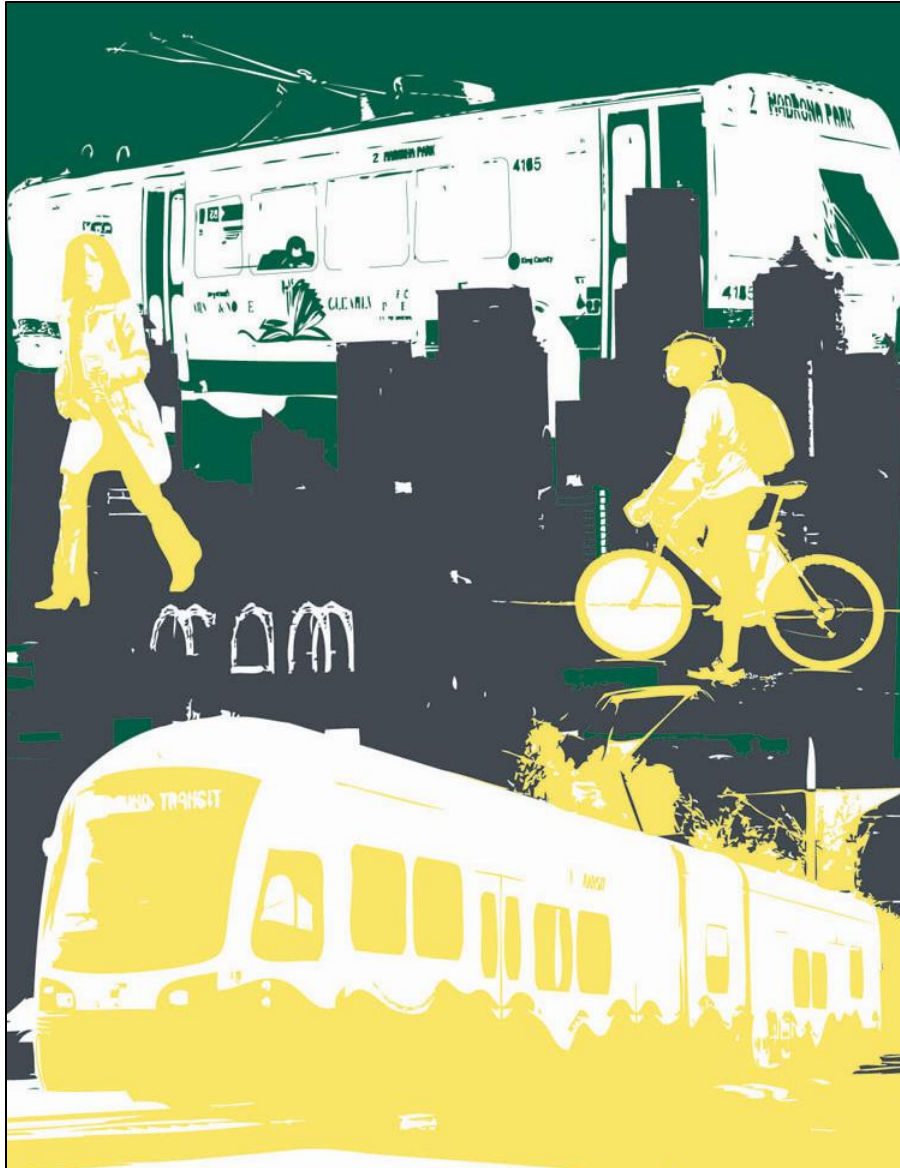


# Next Steps

- TMP web survey
- Ongoing outreach
- Advisory group coordination
- Briefing Book completion
- Contacts with elected officials



# Questions?



## Website:

<http://www.seattle.gov/transportation/transitmasterplan>

**Tony Mazzella**, 684-0811  
[tony.mazzella@seattle.gov](mailto:tony.mazzella@seattle.gov)

**Jennifer Wieland**, 733-9970  
[jennifer.wieland@seattle.gov](mailto:jennifer.wieland@seattle.gov)



**WALK.  
BIKE.  
RIDE.**