

SR 520 Bridge Replacement and HOV Program

Seattle Design Commission

Bruce McKean

KGM, Bridge Architect
Helix Design Group

John White, P.E.

WSDOT, Project Director

Teal Brogden

KGM, Lighting Designer
Horton Lees Brogden Lighting Design

David L. Dye, P.E.

Deputy Secretary

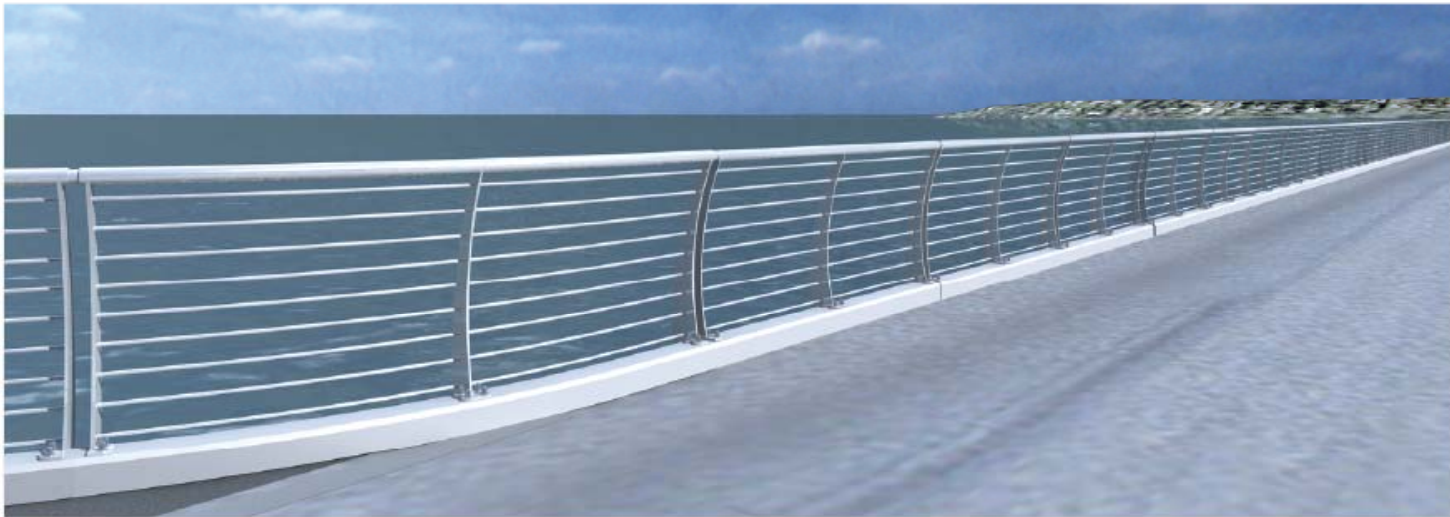
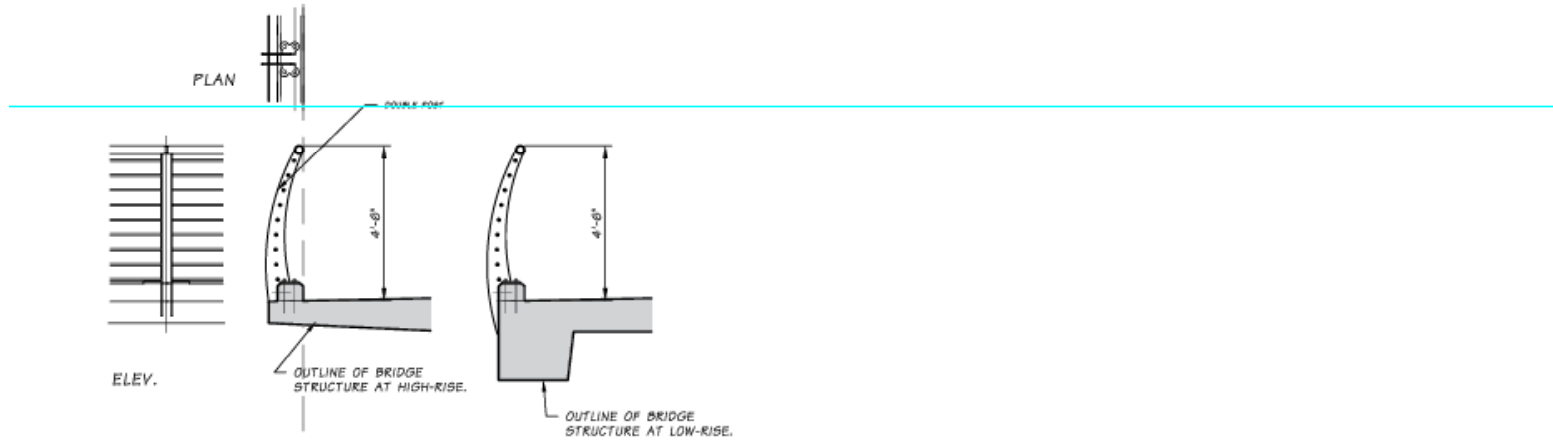
Paula Hammond

Secretary of Transportation

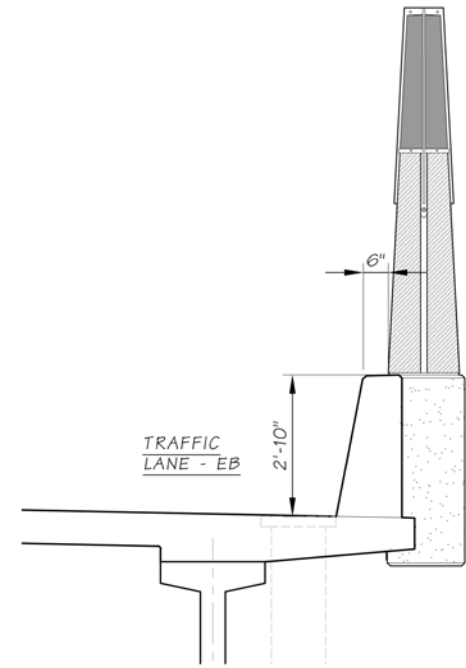
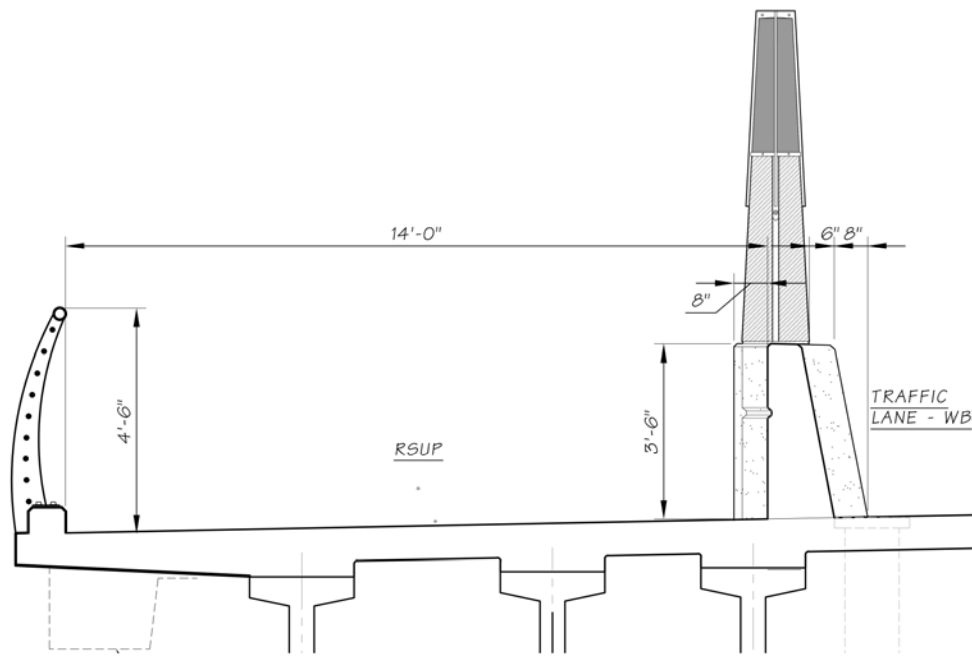
Julie Meredith, P.E.

SR 520 Program Director

RAILING



REGIONAL PATH



Illuminated Bridges- Classic



Illuminated Bridges- Classic and Contemporary



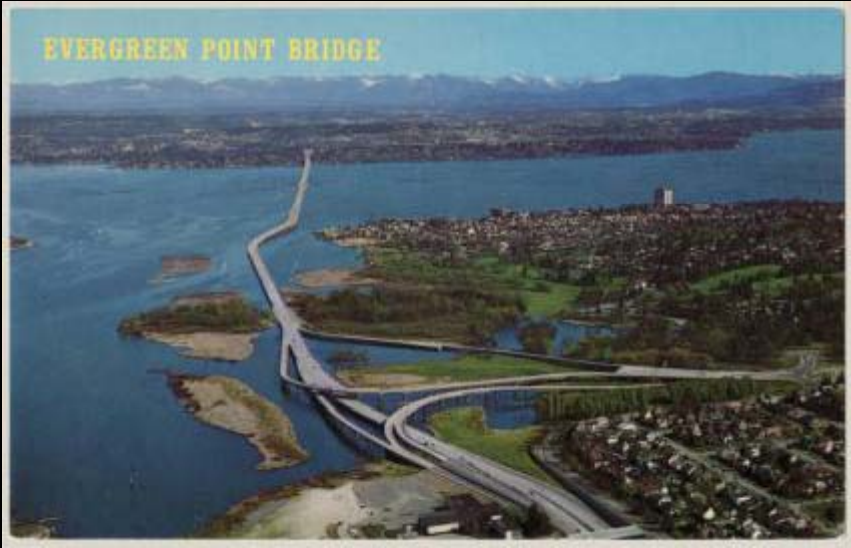
Illuminated Bridges- Contemporary



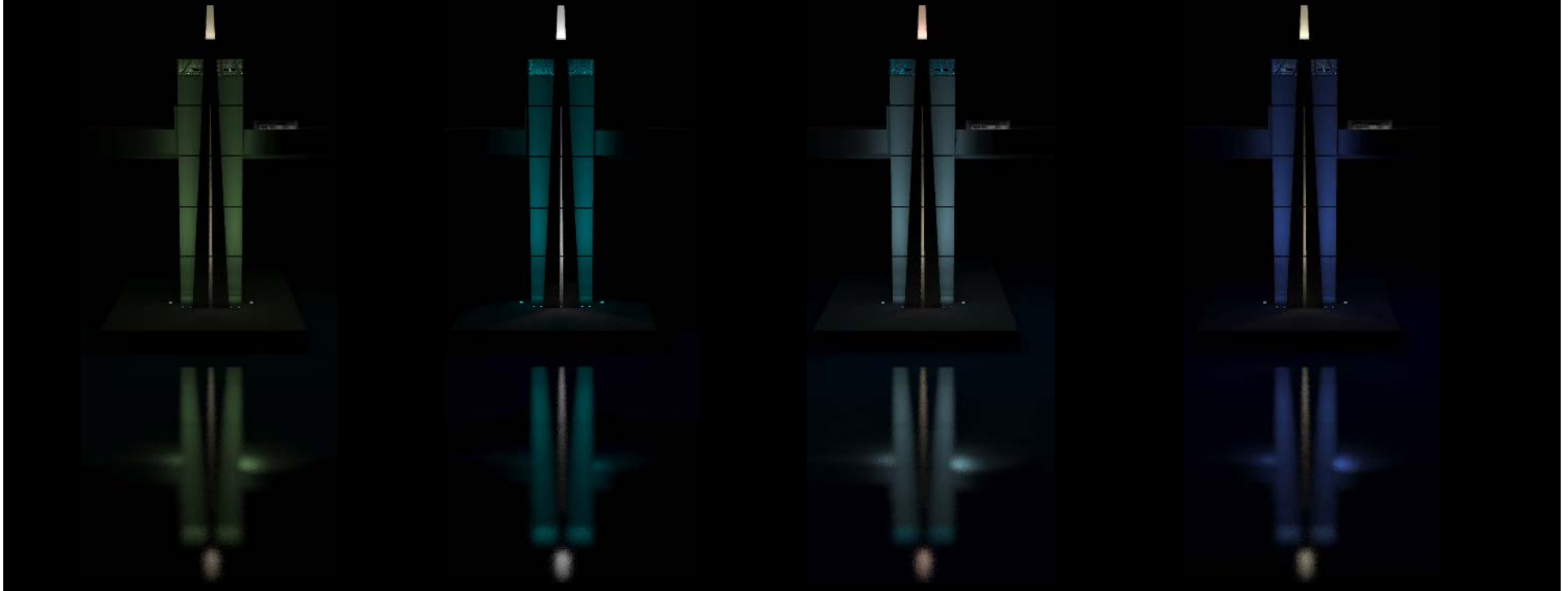
Illuminated Bridges- Other Examples



Color Inspiration – the Evergreen Point Bridge



Sentinel Color Options

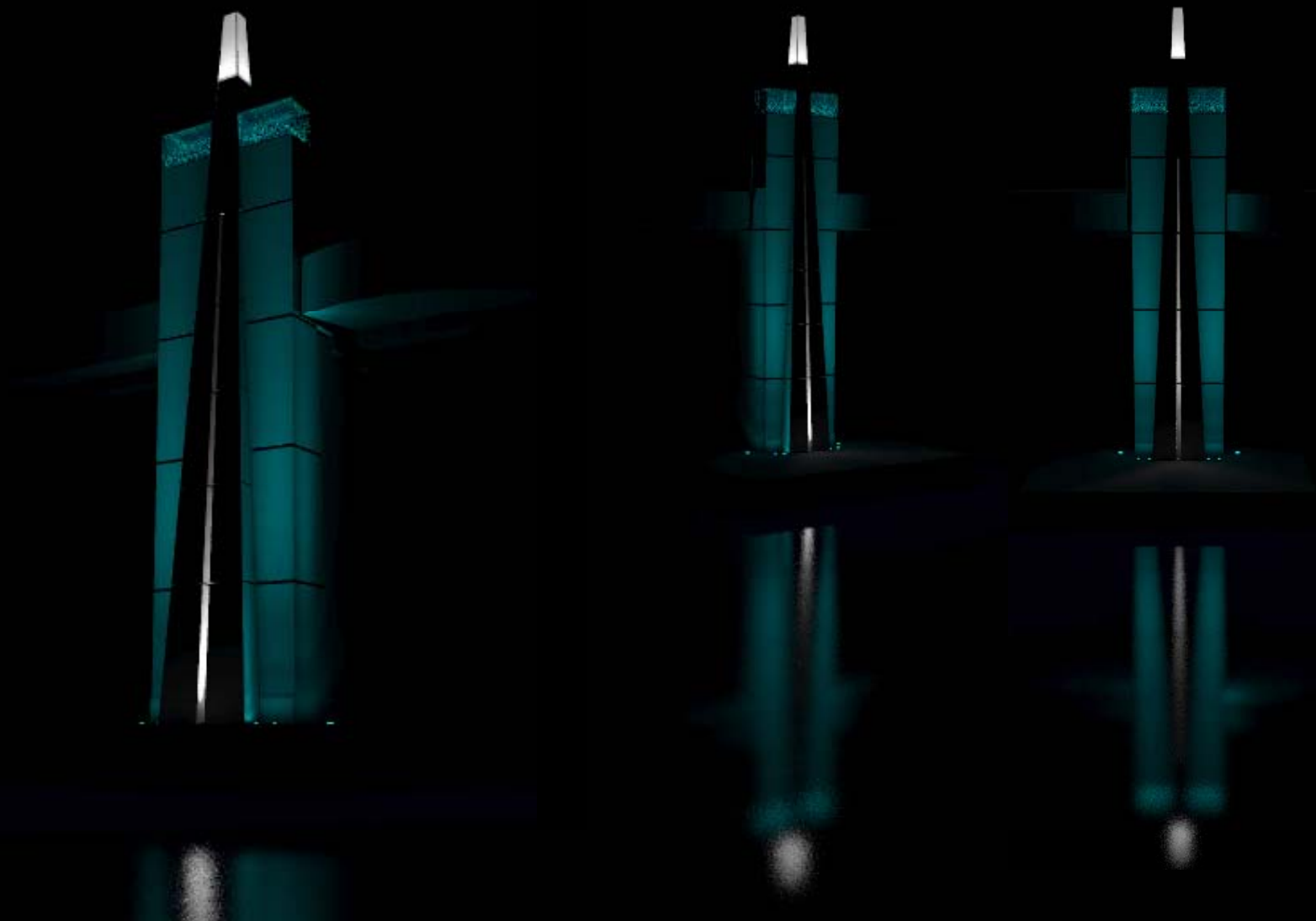


Integrity | Stewardship | Life-Balance | Curiosity | Artistry

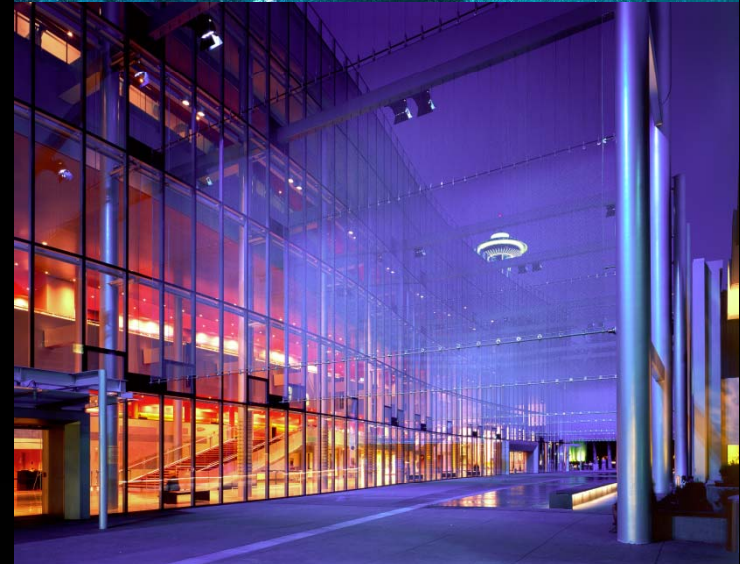
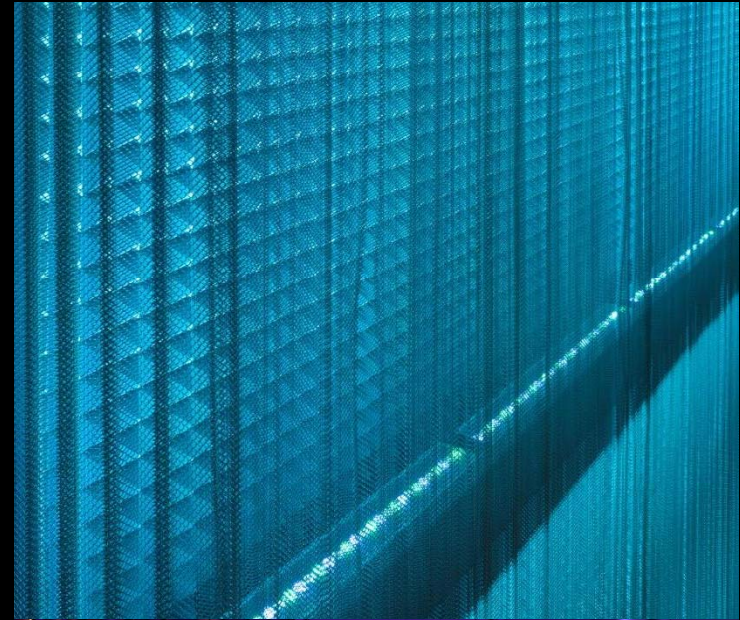
Horton Lees Brogden Lighting Design | New York | San Francisco | Los Angeles | Boston | 8580 Washington Blvd. Culver City CA 90232 | 310 837 0920 voice | 310 837 0902 fax | www.HLBlighting.com | 23 May 2012

520 Bridge Color Options

520 Bridge Preferred Color Option



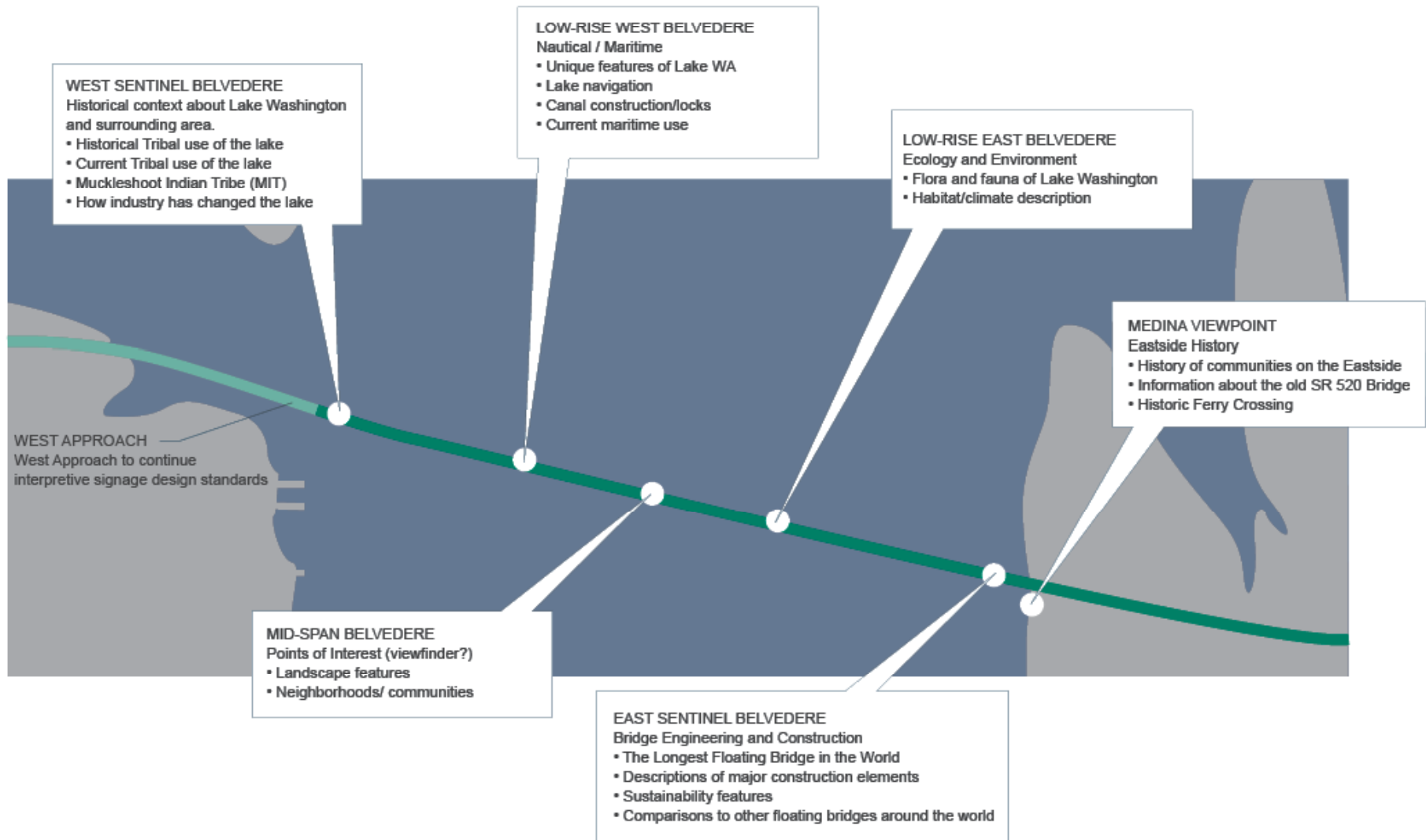
520 Bridge Preferred Color Option



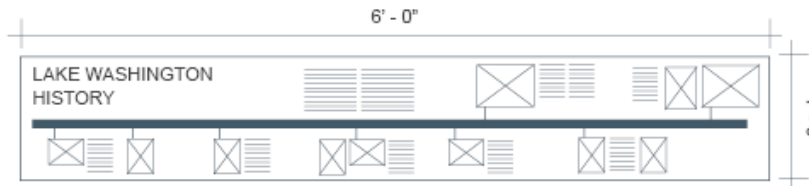
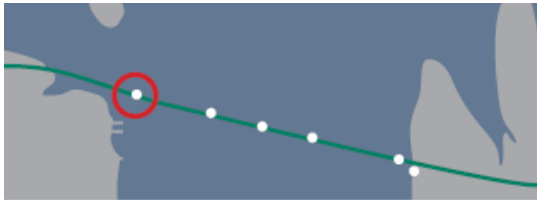
LAURELHURST VIEW



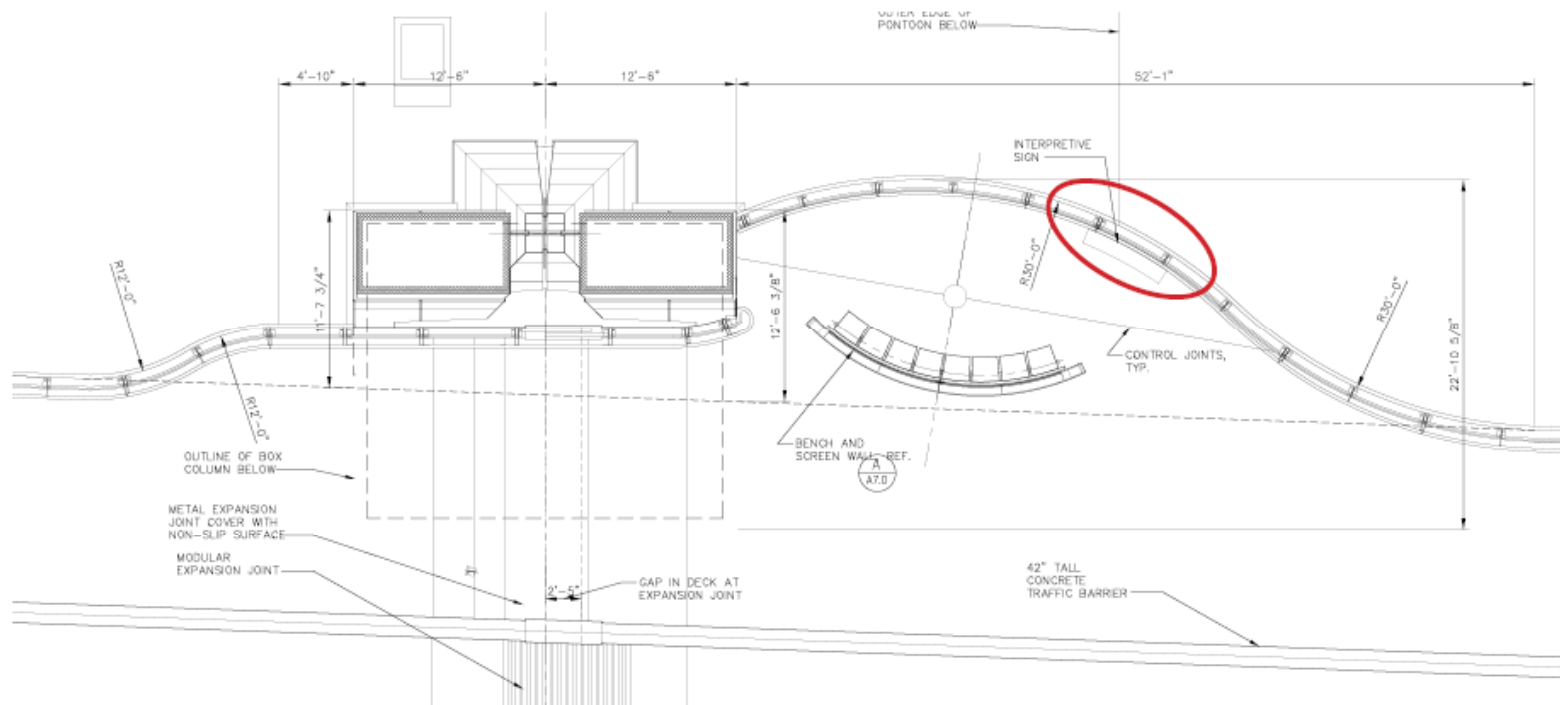
INTERPRETIVE SIGNAGE PLAN



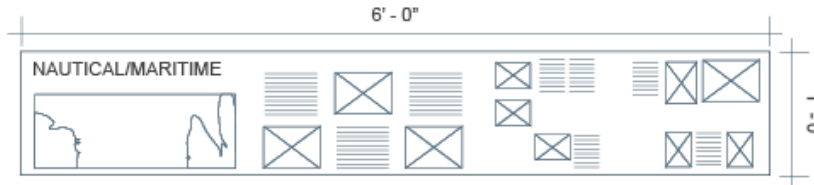
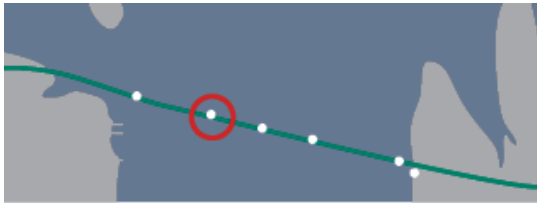
WEST SENTINEL BELVEDERE



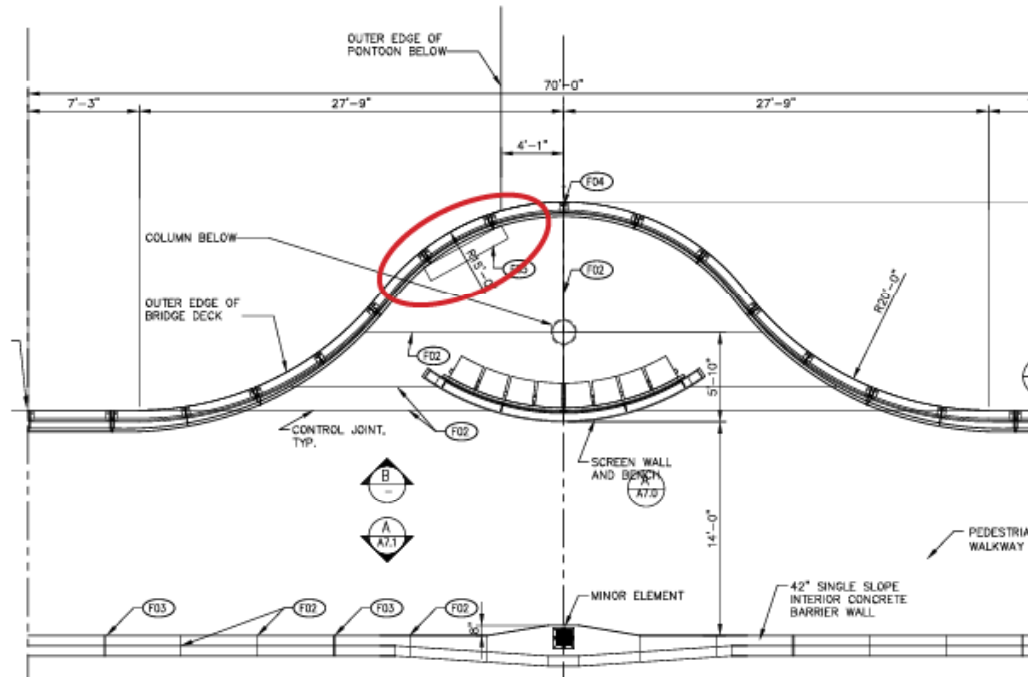
- Historical Tribal use of the lake
- Current Tribal use of the lake
- Muckleshoot Indian Tribe (MIT)
- How industry has changed the lake



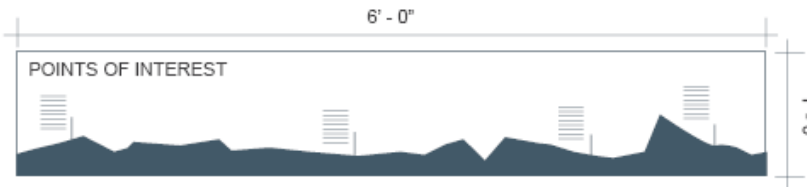
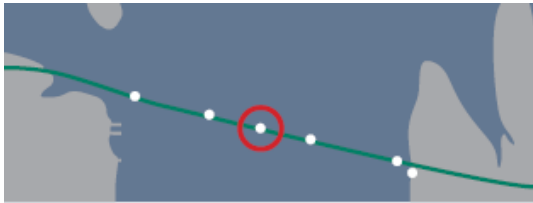
LOW-RISE WEST BELVEDERE



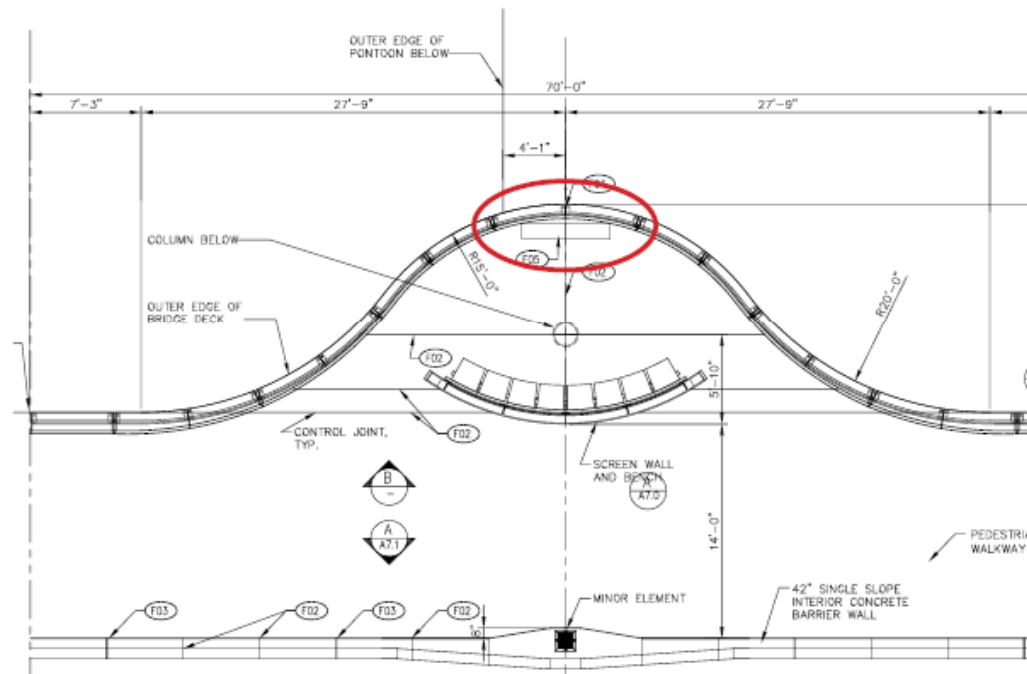
- Unique features of Lake WA
- Lake navigation
- Canal construction/locks
- Current maritime use



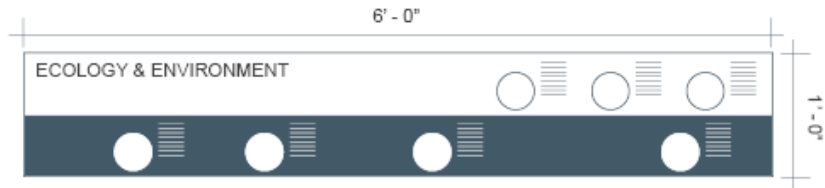
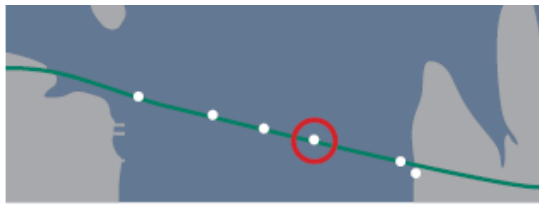
MID-SPAN BELVEDERE



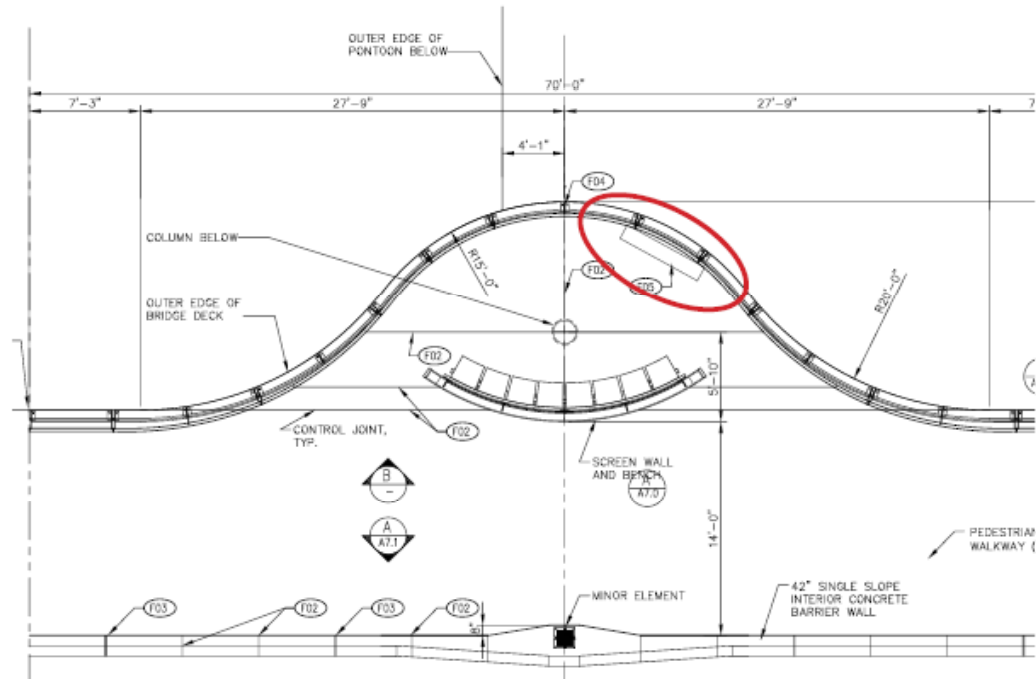
- Landscape features
- Neighborhoods & communities



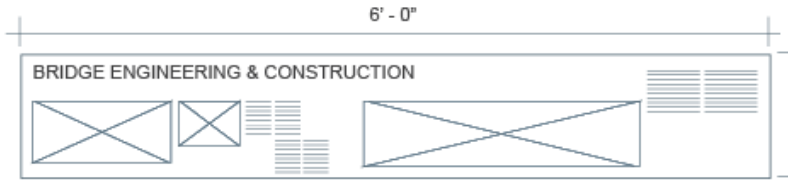
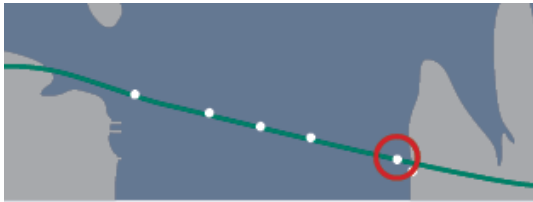
LOW-RISE EAST BELVEDERE



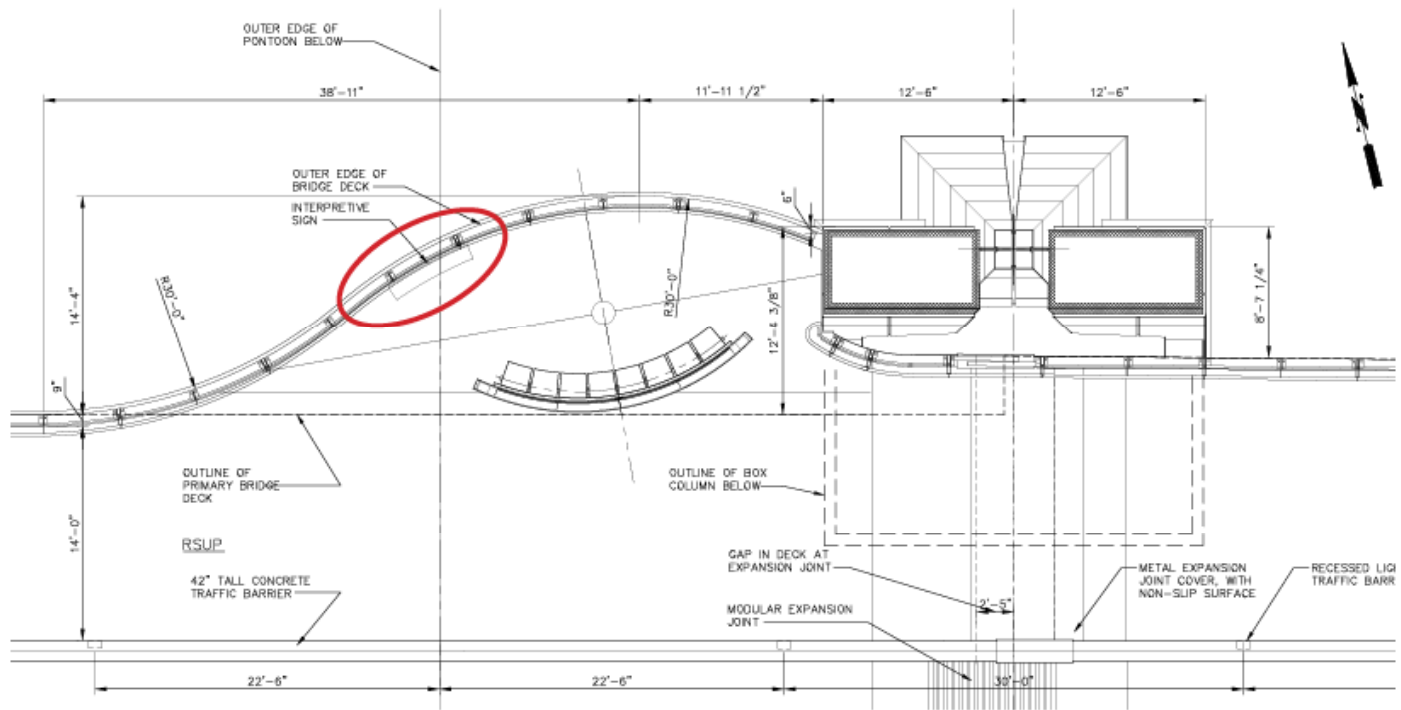
- Flora and fauna of Lake Washington
- Habitat/climate description



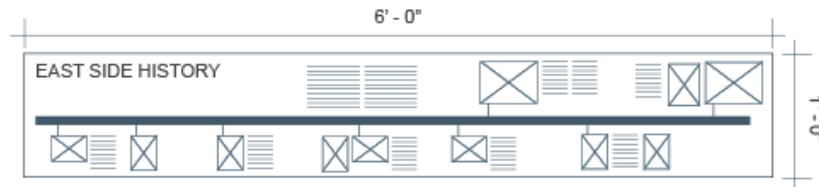
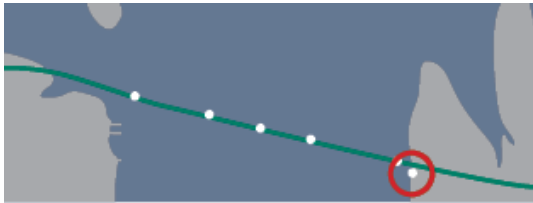
EAST SENTINEL BELVEDERE



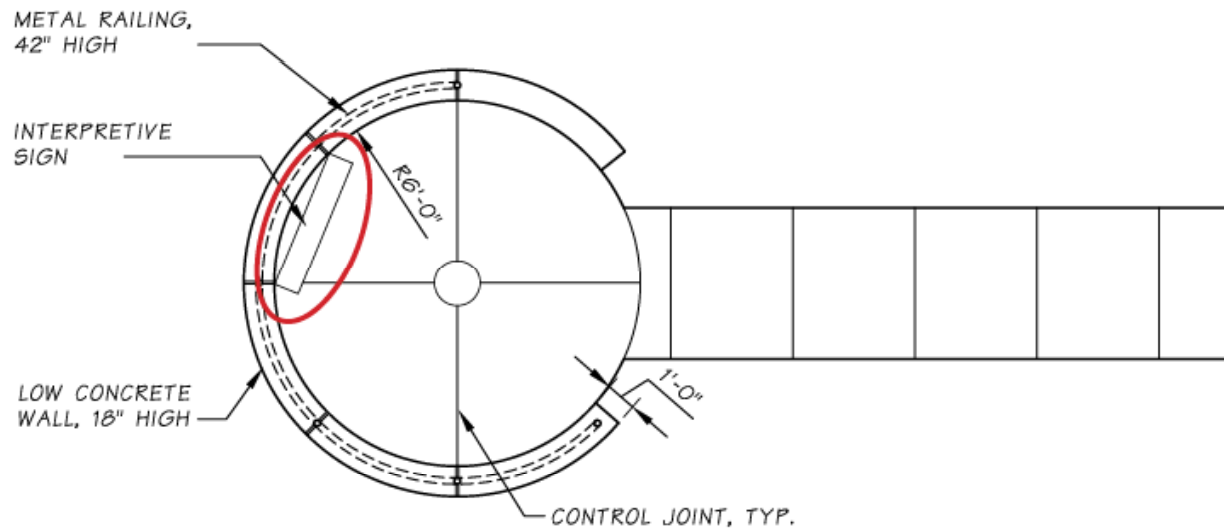
- The Longest Floating Bridge in the World
- Descriptions of major construction elements
- Sustainability features
- Comparisons to other floating bridges around the world



MEDINA VIEWPOINT



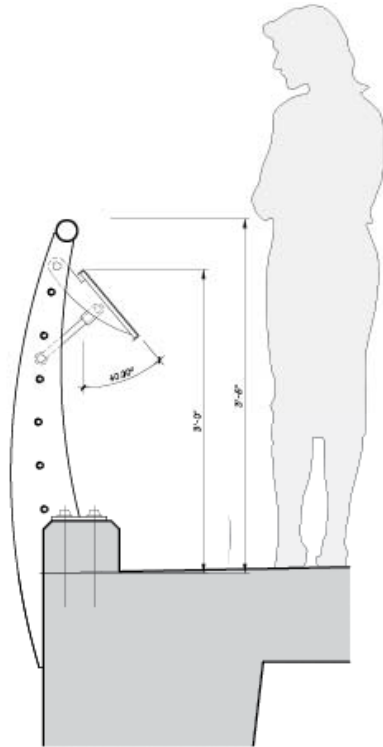
- History of communities on the Eastside
- Information about the old SR 520 Bridge
- Historic ferry crossing



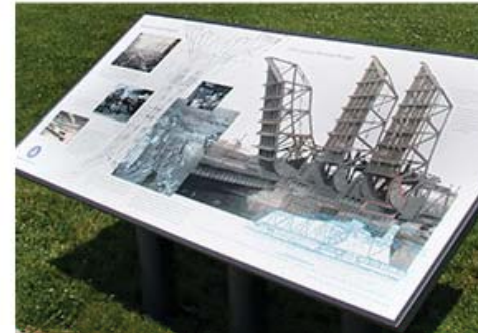
USER PERSPECTIVE



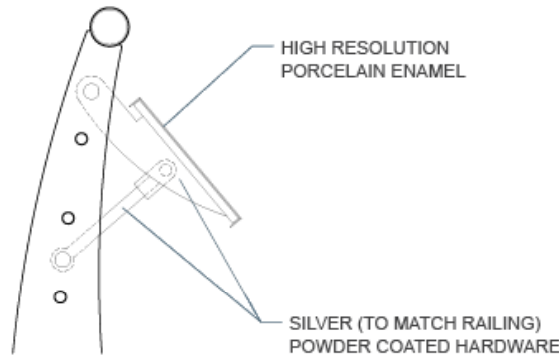
MATERIALS AND ATTACHMENTS



PORCELAIN ENAMEL SIGN
Newseum Museum,
Washington DC



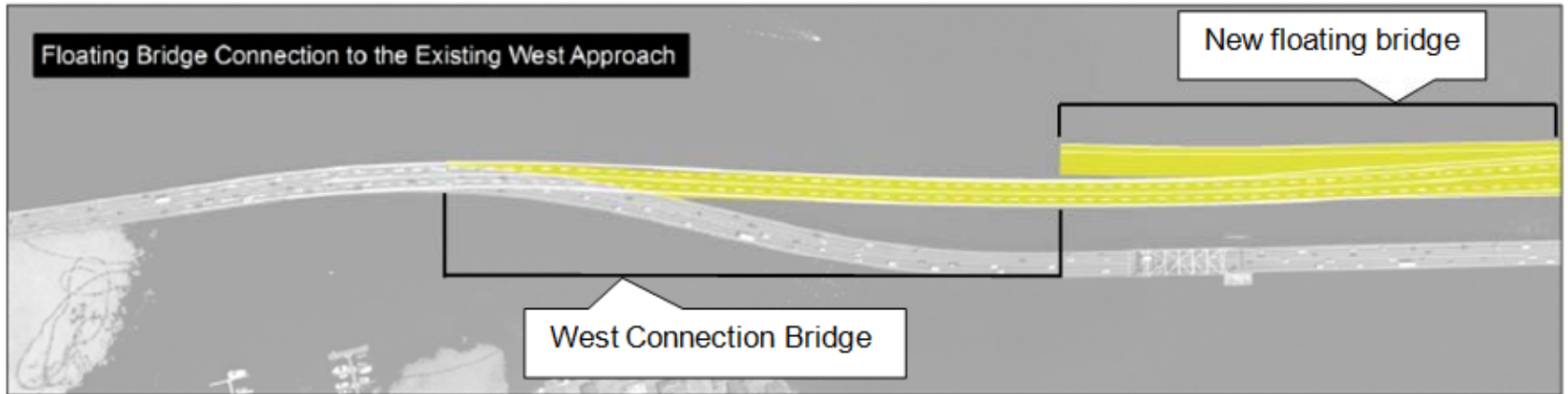
PORCELAIN ENAMEL SIGN
Central Artery Highway,
Boston, MA




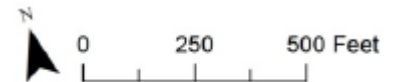
● Very Good ● Good ● Fair ● Poor

Sign Material	Scratch Resistance	Impact Resistance	Weather Resistance	Replacement Cost	Graphic Range	Required Maintenance
Porcelain enamel on steel	●	●	●	●	●	20+
Fiberglass embedded	●	●	●	●	●	10+
Baked enamel on metal (paint)	●	●	●	●	●	5+
Photoprocessed aluminum	●	●	●	●	●	10+
Silkscreened or painted aluminum	●	●	●	●	●	5+
Cast aluminum	●	●	●	●	●	20+
Cast bronze or brass	●	●	●	●	●	40+
Engraved or etched stainless steel	●	●	●	●	●	10+
Routed or sandblasted wood (painted)	●	●	●	●	●	5+
Engraved plastic	●	●	●	●	●	5+
Rearscreen printed plastic	●	●	●	●	●	5+
Applied vinyl	●	●	●	●	●	5+

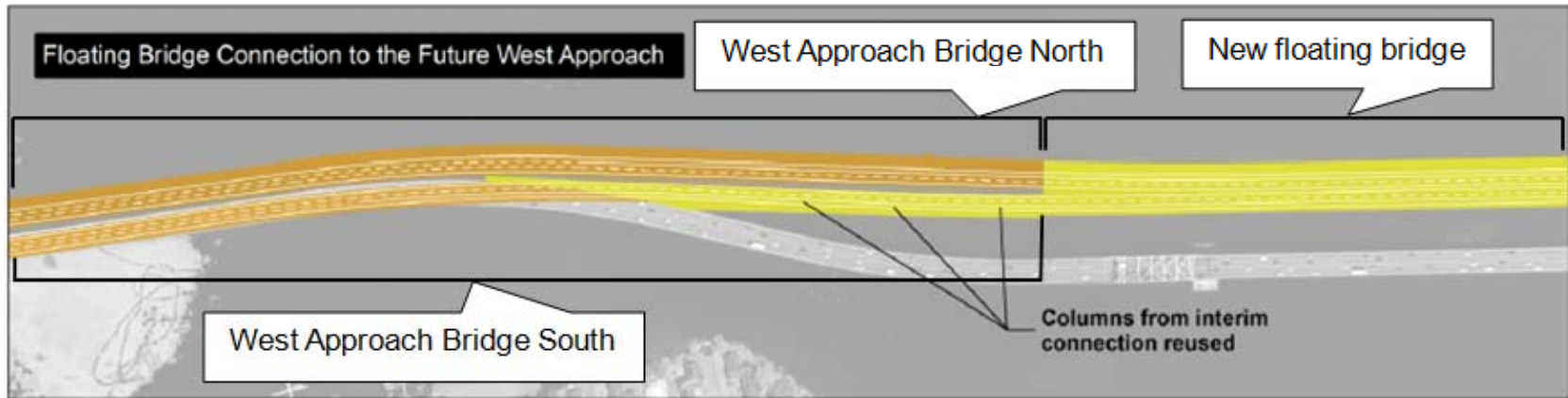
Program Construction Staging – Phase I



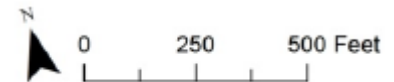
 Construction Phase 1



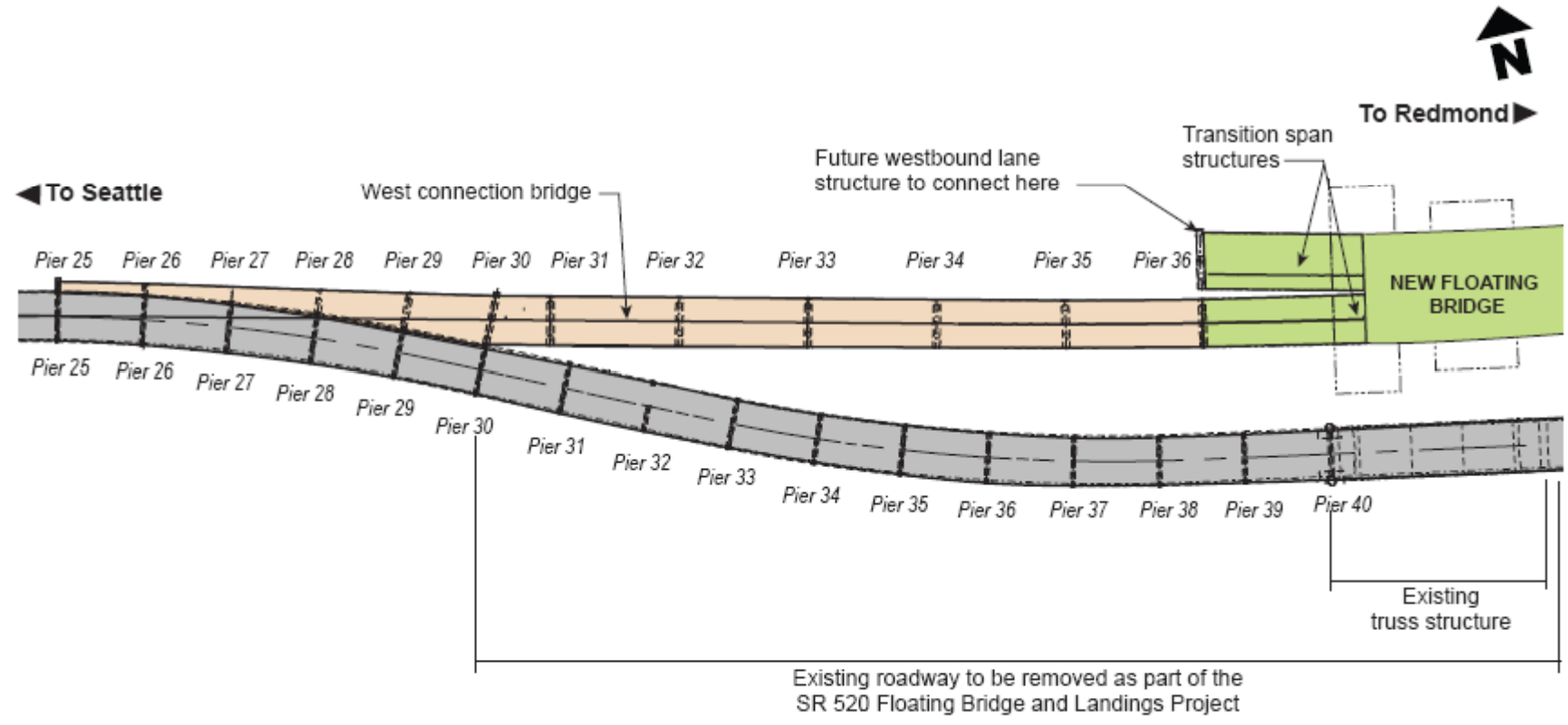
Program Construction Staging – Full Build



- Construction Phase 1
- Full Build



Program Construction Staging



Note: Approximate length of west connection bridge is 1,335 feet.

- LEGEND:**
- West connection bridge
 - Permanent bridge structures
 - Existing