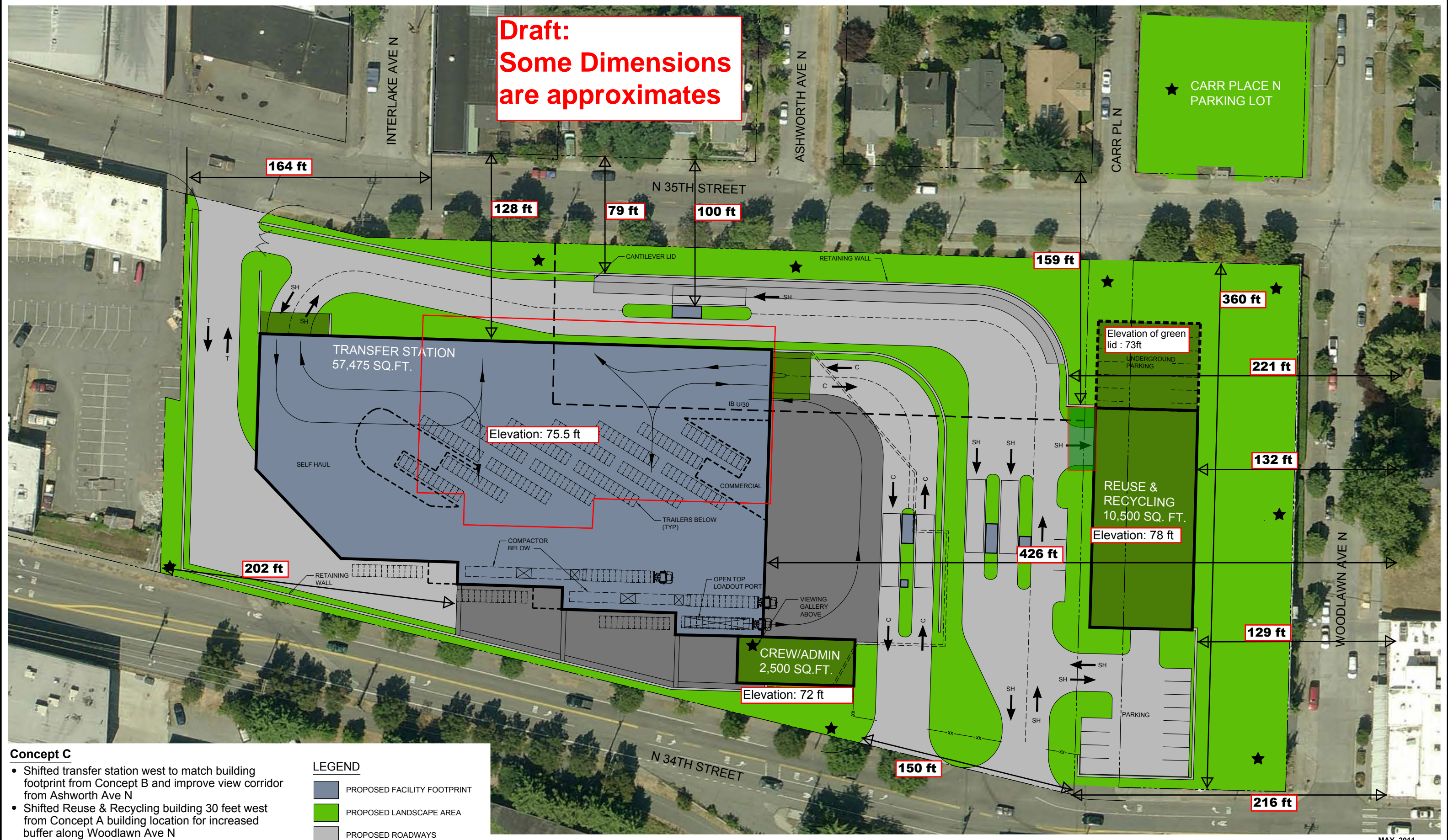


**Draft:
Some Dimensions
are approximates**

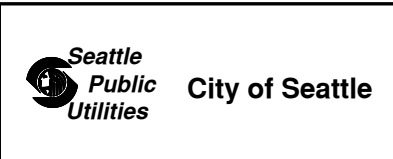
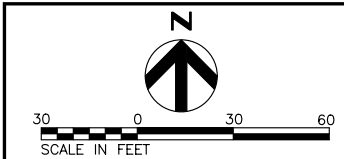


- Concept C**
- Shifted transfer station west to match building footprint from Concept B and improve view corridor from Ashworth Ave N
 - Shifted Reuse & Recycling building 30 feet west from Concept A building location for increased buffer along Woodlawn Ave N
 - Maintained separated commercial and self-haul traffic
 - Separated commercial and self-haul roads to reduce site access congestion on N 34th St.
 - Separated inbound/outbound self-haul scales based on queuing requirements

LEGEND

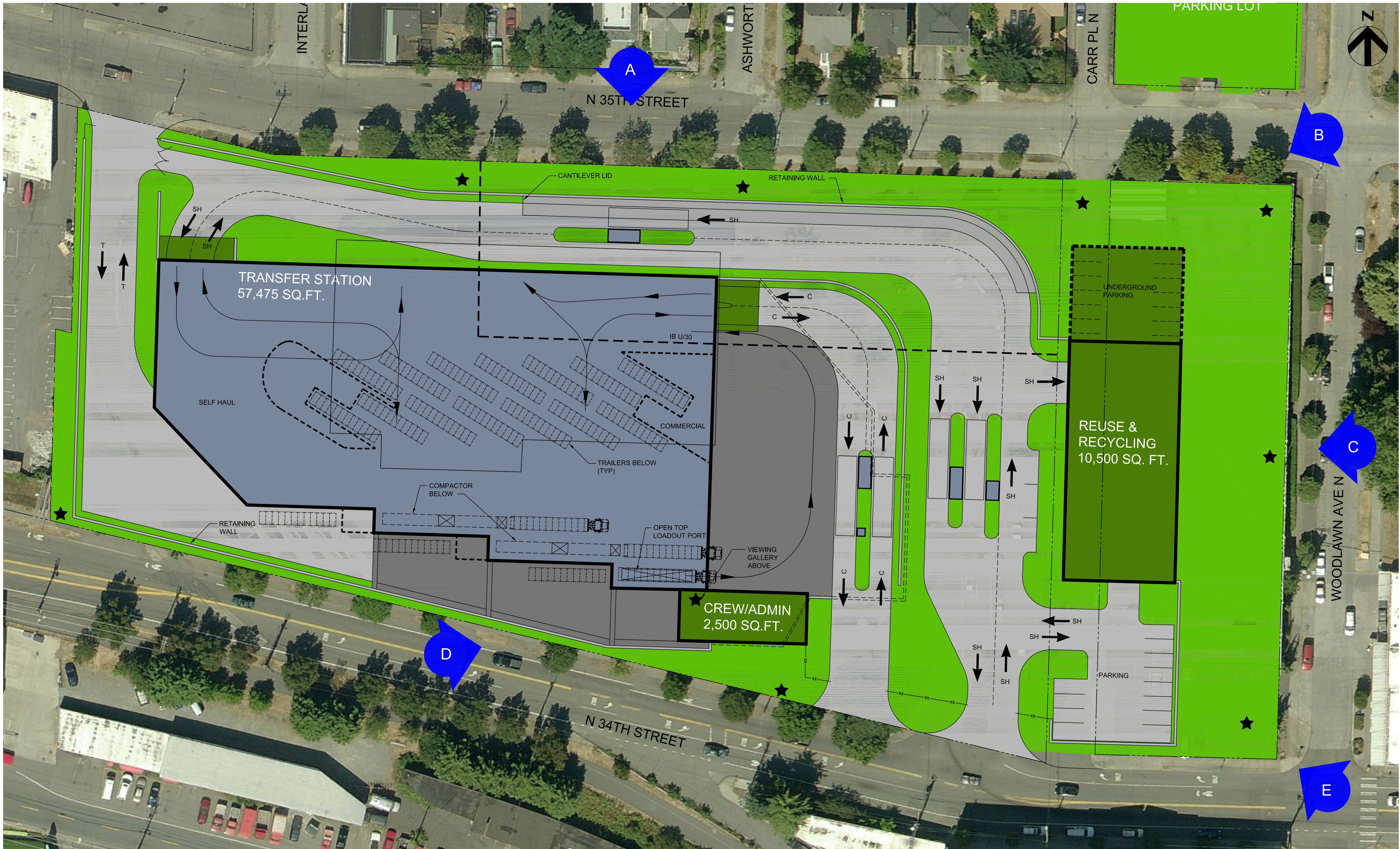
	PROPOSED FACILITY FOOTPRINT
	PROPOSED LANDSCAPE AREA
	PROPOSED ROADWAYS
	PROPOSED GREEN ROOF
	PROPOSED CANOPY
	EXISTING TRANSFER STATION FOOTPRINT

	INDUSTRIAL BUFFER
	POTENTIAL COMMUNITY AMENITY
	COMMERCIAL
	SELF HAUL
	TRAILERS



CONCEPT C

MAY, 2011



LEGEND
 VIEW POINT LOCATIONS

CONCEPT C
 SITE PLAN
 JUNE 2011

CONCEPT C VIEWS



VIEW A - NORTH



VIEW B - NORTH EAST



VIEW C - EAST



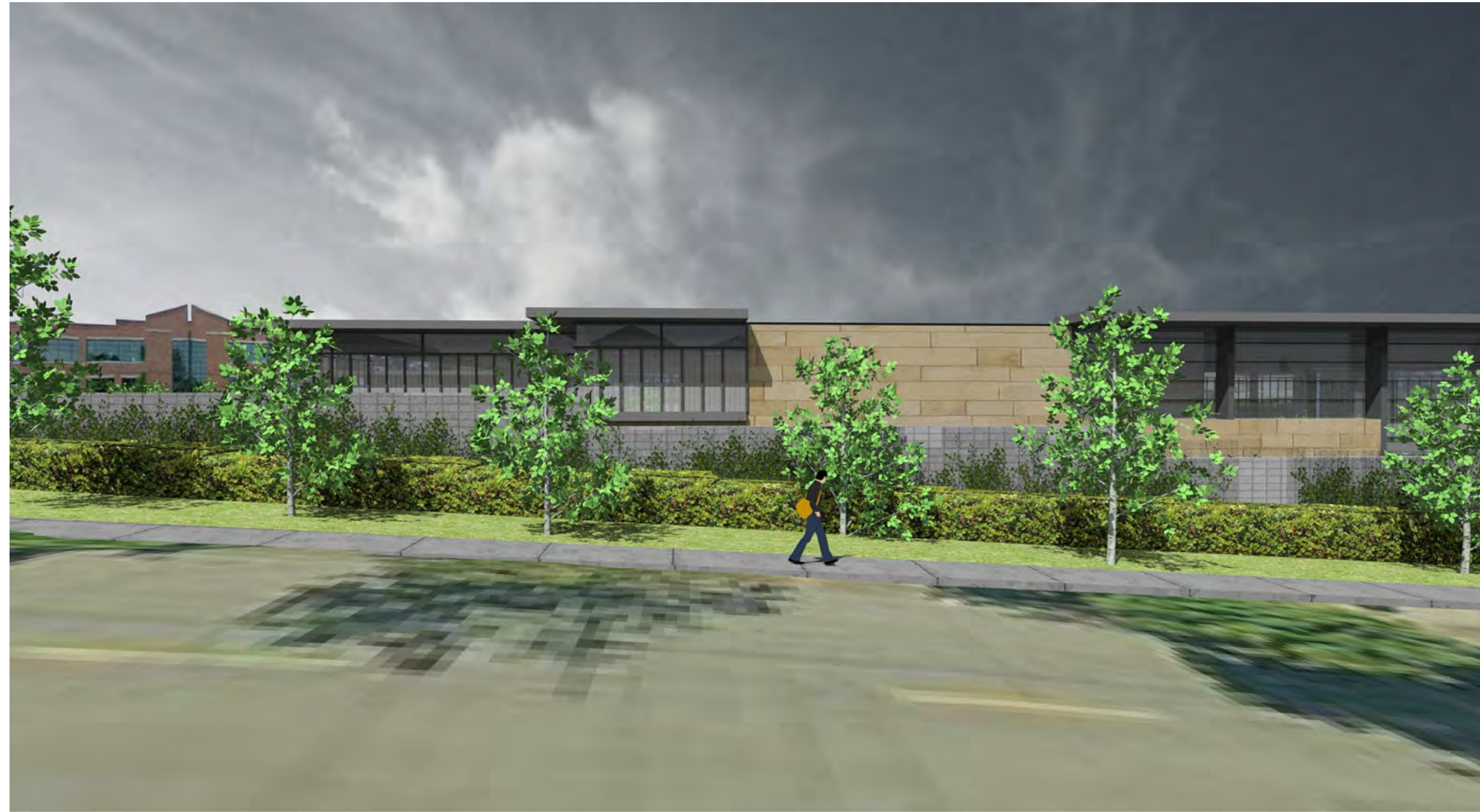
VIEW D - SOUTH WEST



VIEW E - SOUTH EAST

Architectural renderings for Workshop #4 are to provide representative views of the future North Transfer Station and are for discussion only.

CONCEPT C VIEWS



NORTH



NORTH EAST



EAST



SOUTH WEST



SOUTH EAST

Architectural renderings for Workshop #4 are to provide representative views of the future North Transfer Station and are for discussion only.

Columns

Exterior



Interior



Color Palette

Muted



Bold



Canopies/overhangs

Canopies

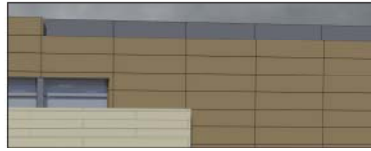


Overhangs



Finish

Smooth



Rough



Modulation

Horizontal



Vertical



Daylighting

Limited



Extensive



Metal exterior

Horizontal rib panels

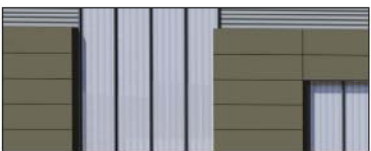


Wide flat panels



Horizontal/Vertical

Horizontal



Vertical

