

Midvale Stormwater Facility

Seattle Public Utilities

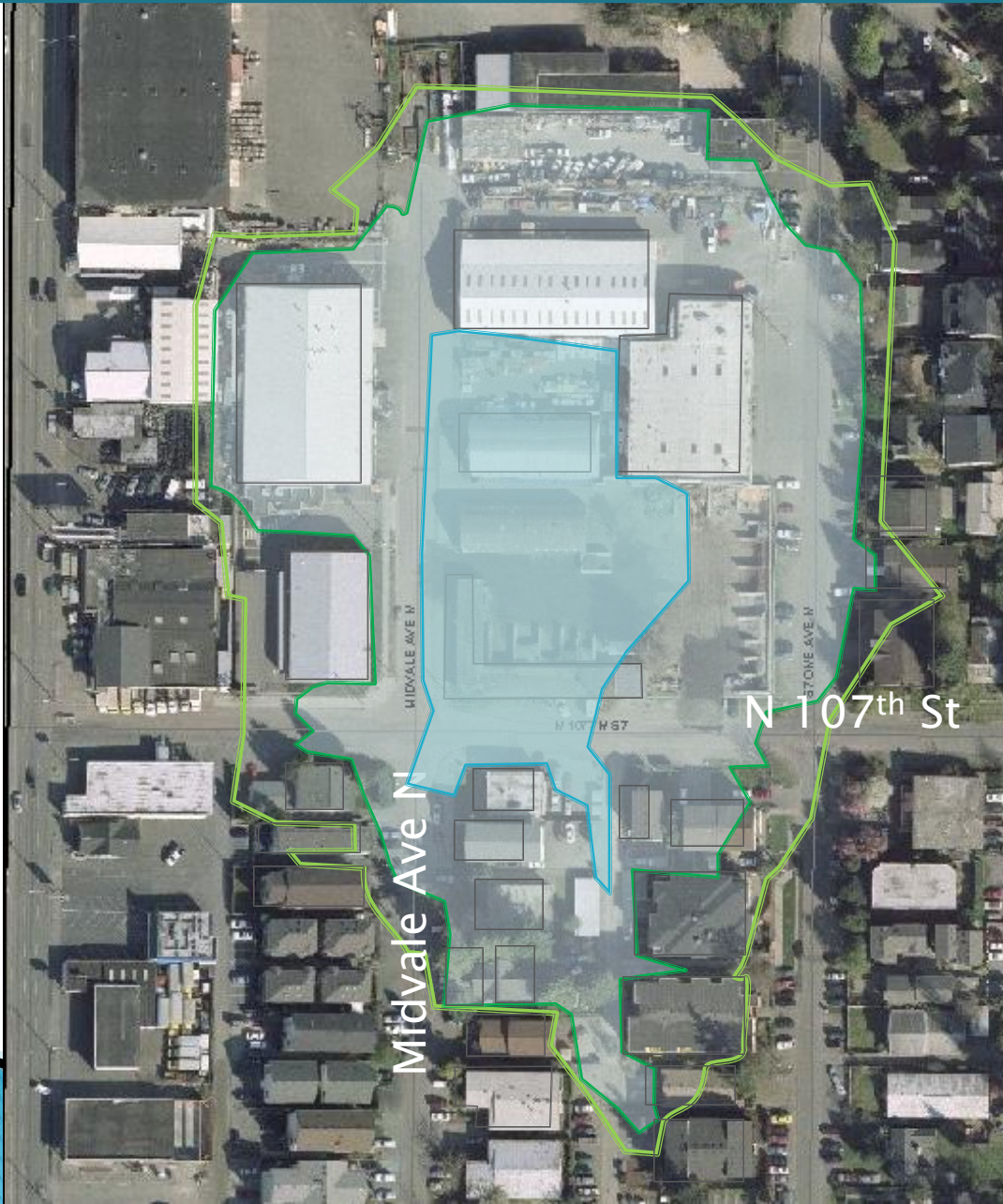
Design Commission Meeting #3

90% Design Review August 2011


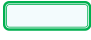

N 107th St & Midvale Ave N. Study Area



Existing Conditions - Flood Prediction Map



Storm

	10-yr
	50-yr
	Dec 07

December 2007 Flood Photos



N 107th St between Midvale Ave N
and Stone Ave N



SE corner of Midvale & N 107t St

December 2010 Flood Photos



Apartment building
almost flooded

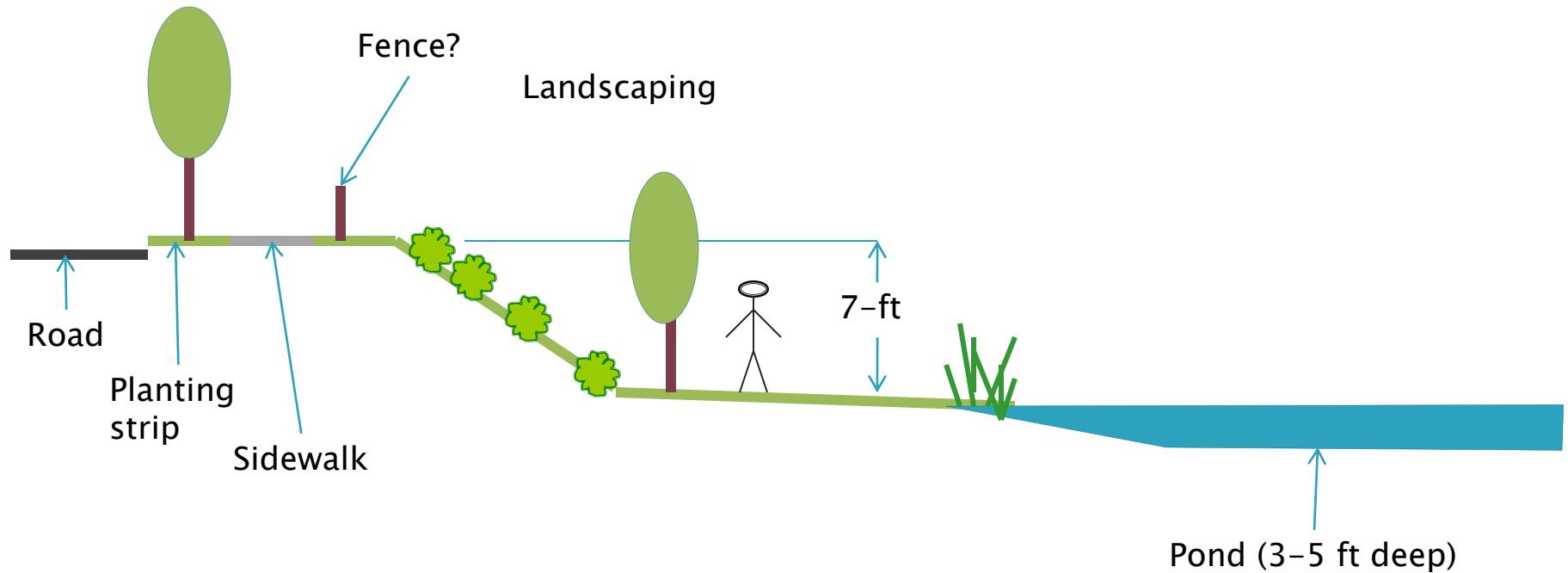


Residents filling sandbags &
Surcharging maintenance holes



Oak Lake - 1897

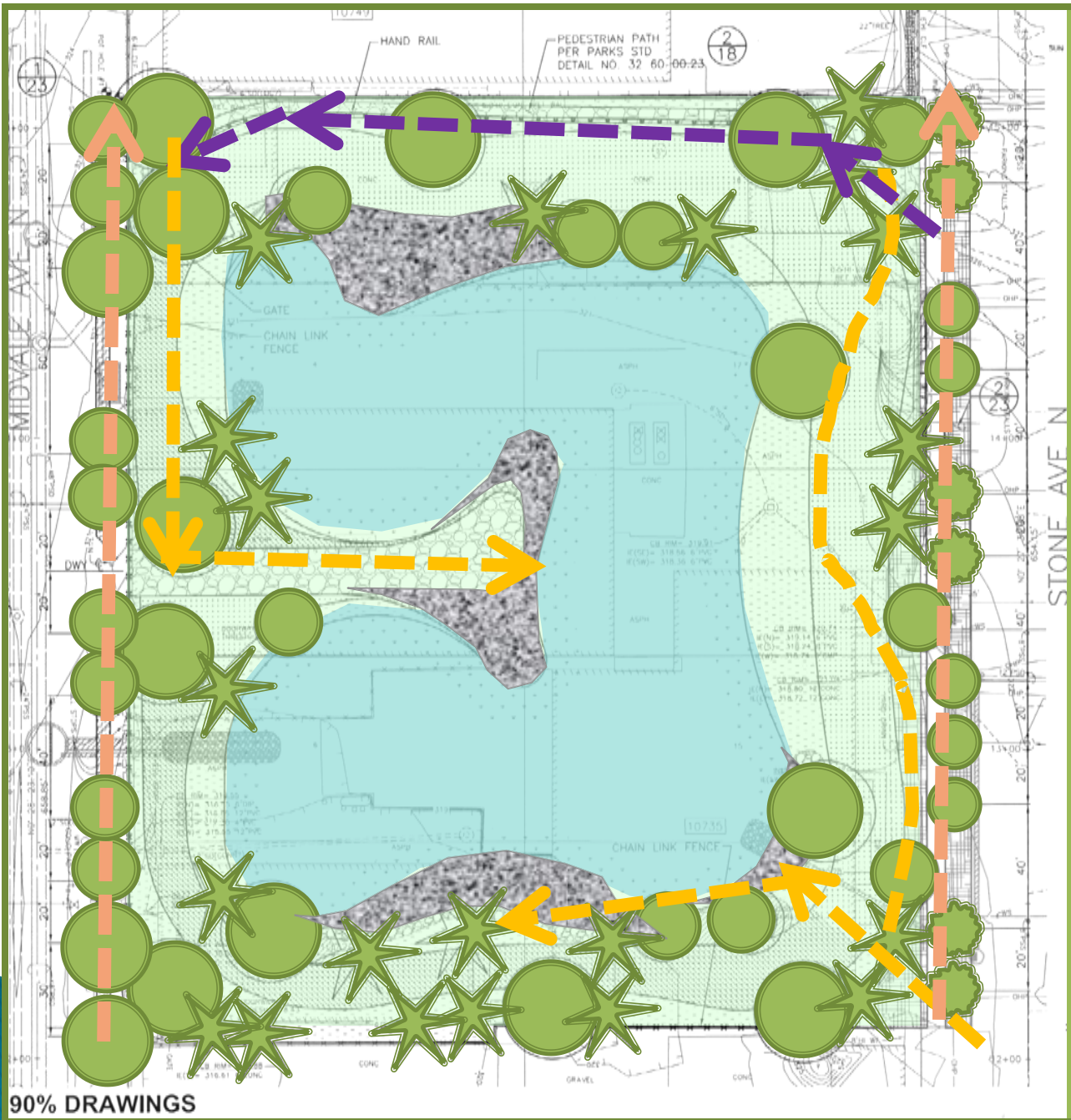
Cross-section



During very large storms, the facility can temporarily fill 7-ft deeper.

Pedestrian Flow

- Sidewalks
- Gravel Trail
- "Boot path"

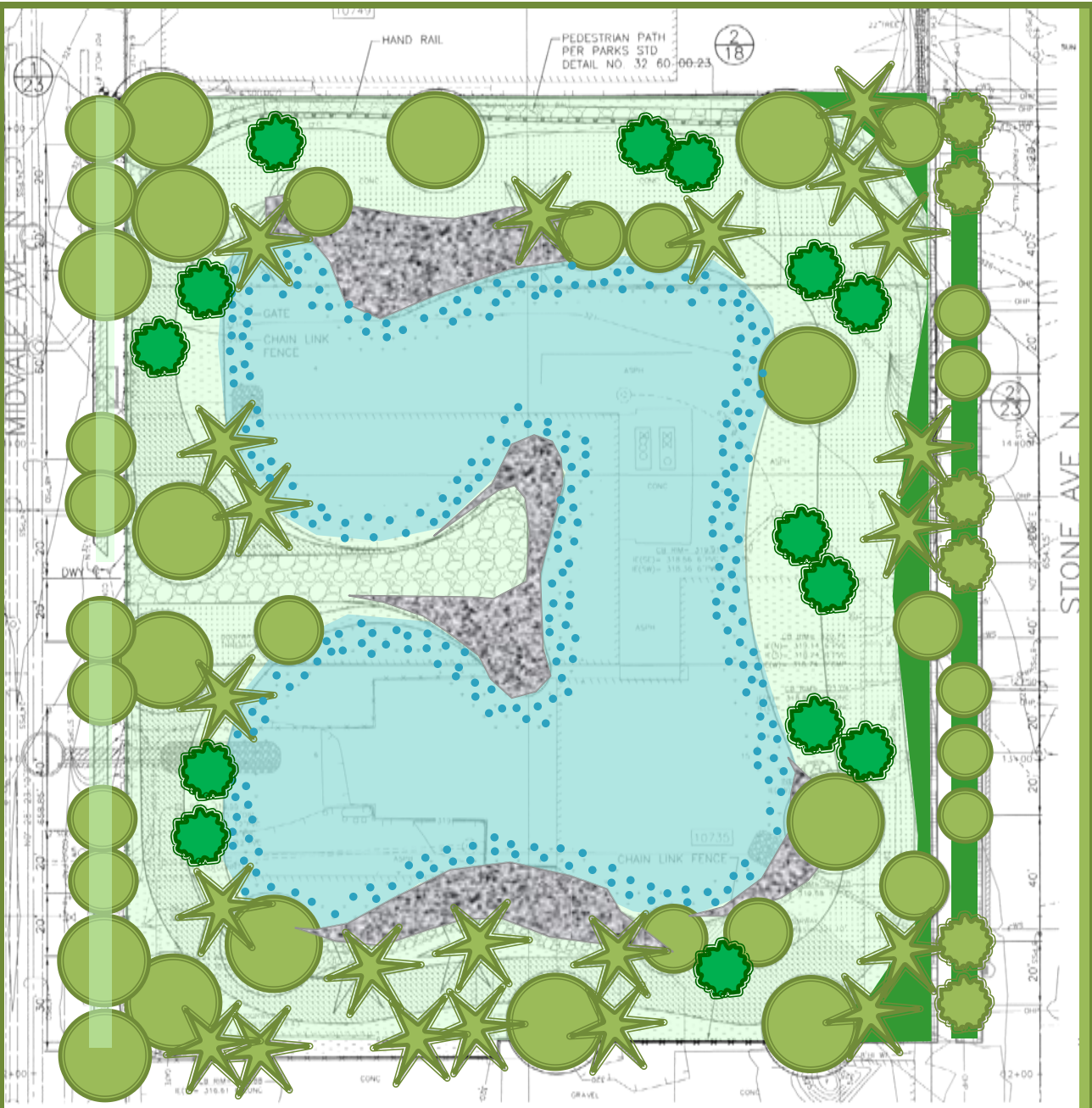








90% DRAWINGS



Proposed Stormwater Facility

Landscape



-  Trees
-  Mowed Grass
-  Wetland Plants
-  Low shrub groups
–dogwood, red currant, hydrangea, vine maple
-  Low vegetation
–salal, sword fern, kelsey dogwood, geranium, iris
-  River rock "beach"

Starlight Dogwood

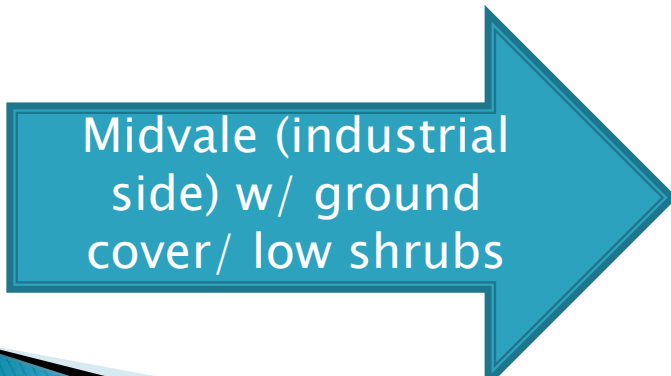


David's Maple



Stone Ave (residential side) w/ grass

Black Maple



Midvale (industrial side) w/ ground cover/ low shrubs

Italian Oak

Coast redwood



Western hemlock



Shore pine



Bald cypress



Tupelo



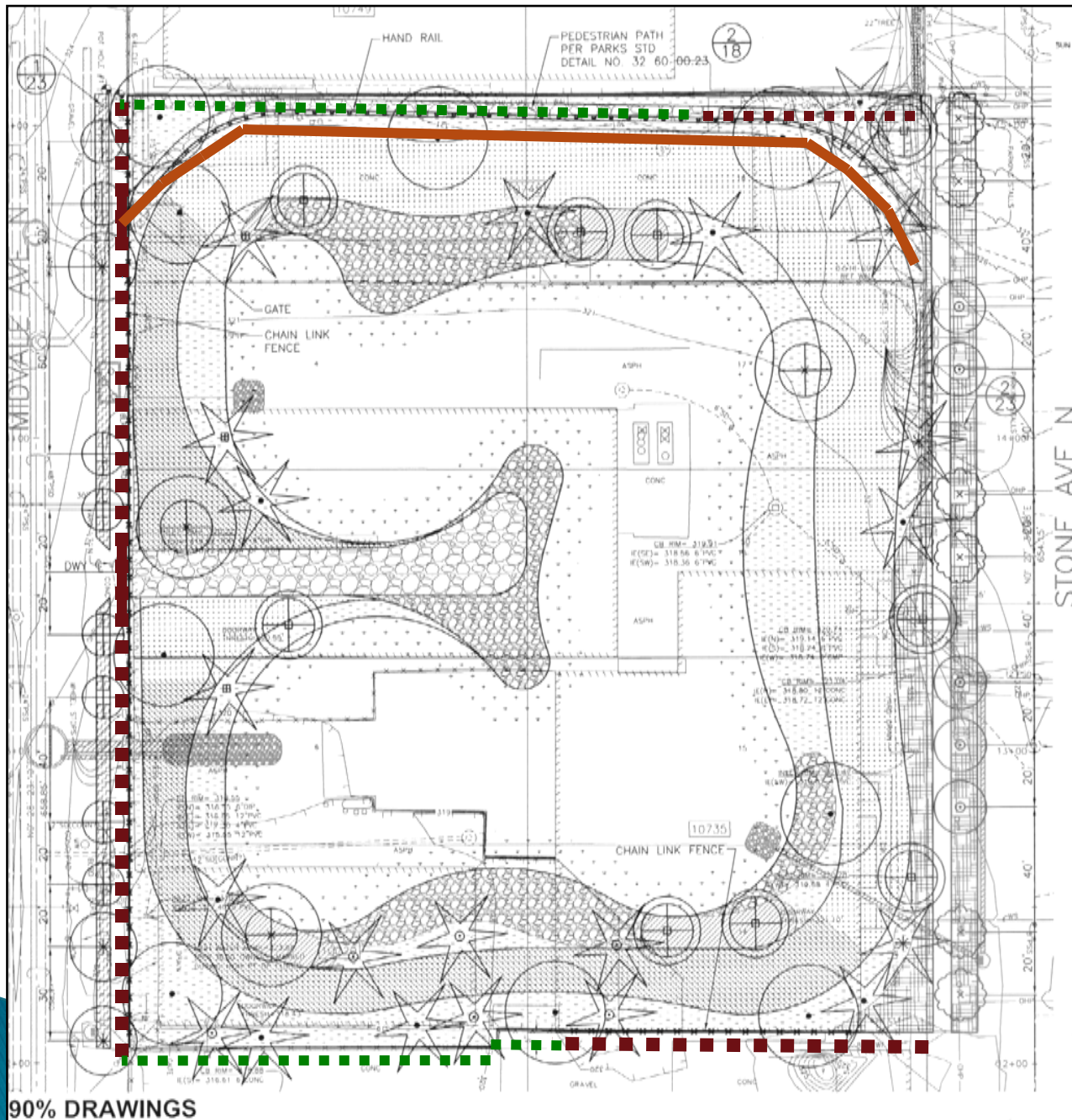
Oregon Ash



Sugar Maple



Fencing



- Proposed 6-ft black vinyl chain link fence
- Gates
- Proposed hand rail
- Existing chain link



Public space fence = black vinyl
chain link



01/01/2005



05/01/2011



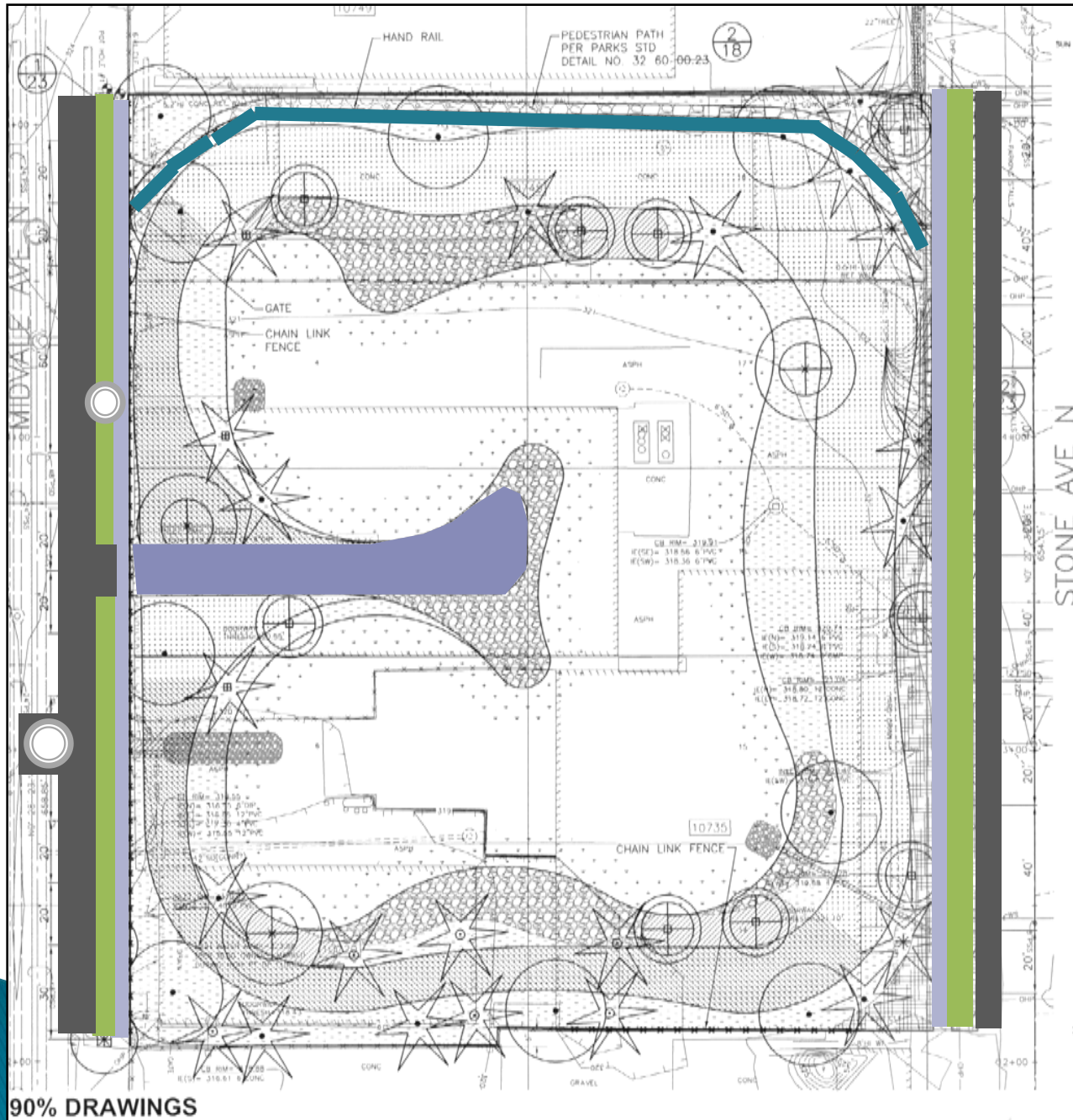
Hand rail options



01/01/2005

Roadway/ Walkway

- Proposed gravel path
- Proposed sidewalks
- Planting Strip
- New Pavement
- Grass-crete

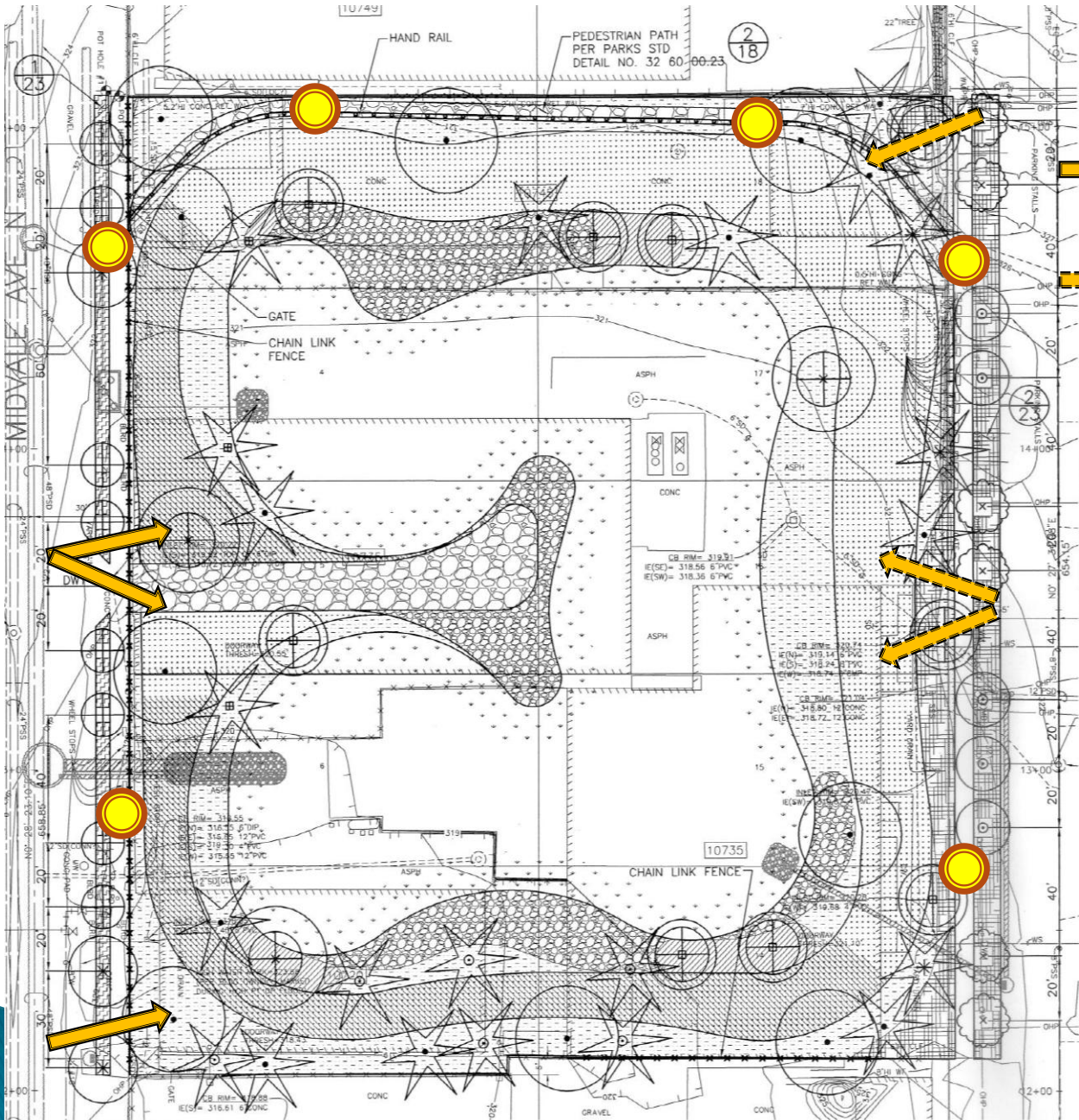


Lighting

Existing flood light

Proposed flood light

Proposed pedestrian light



Landscaping



It takes a year or so for the wetland plants to be firmly rooted and start to fill out.