

# Midvale Stormwater Facility

## Seattle Public Utilities

Design Commission Meeting #1  
August 2010



# N 107<sup>th</sup> St & Midvale Ave N. Study Area







**Oak Lake - 1897**

# December 2007 Flood Photos



N 107<sup>th</sup> St between Midvale Ave N  
and Stone Ave N



SE corner of Midvale & N 107t St



# December 2007 Flood Photos



Daylight basement apartments  
On Midvale south of N 107<sup>th</sup> St

Intersection of Midvale & N 107<sup>th</sup> St



# December 2007 Flood Photos



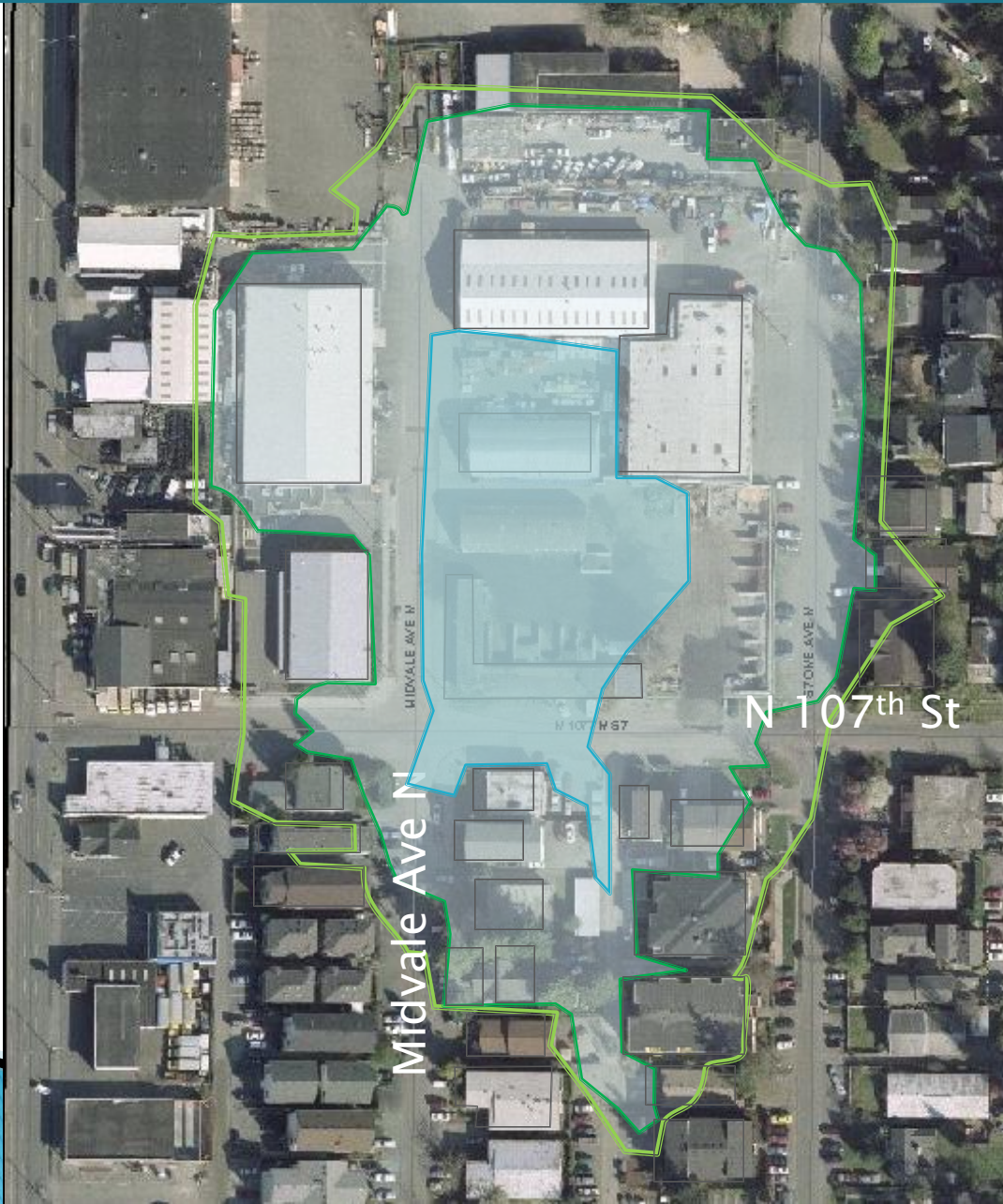
Condo parking garage off alley between Stone & Midvale south of N 107<sup>th</sup> St






Alley between Stone & Midvale South of N 107<sup>th</sup> St



# Existing Conditions - Flood Prediction Map



Storm	
	10-yr
	25-yr
	Dec 07



Ceme  
tery

Storage  
Facility

Mainten  
ance  
Yard

Proposed  
Stormwater  
Facility

Single  
Family

Handy  
Andy

Midvale  
Ave N

Top  
Soil

Stone  
Ave N

N  
107<sup>th</sup>  
St

Aurora  
Ave

Condo  
/ Apt

Condo  
/ Apt

Northgate  
Way



# Existing Building at Proposed Pond Site



# Existing Building at Proposed Pond Site





# Initial Concept for Midvale Stormwater Facility



- Flat area grass w/ shrubs
- Sloped area w/ shrubs

Function: 2-3x / decade, facility will fill with up to 7-ft of water.



# Ashworth Pond— existing detention pond located ½ mile north







# Ashworth Pond— existing detention pond located ½ mile north





# Initial Concept for Midvale Stormwater Facility



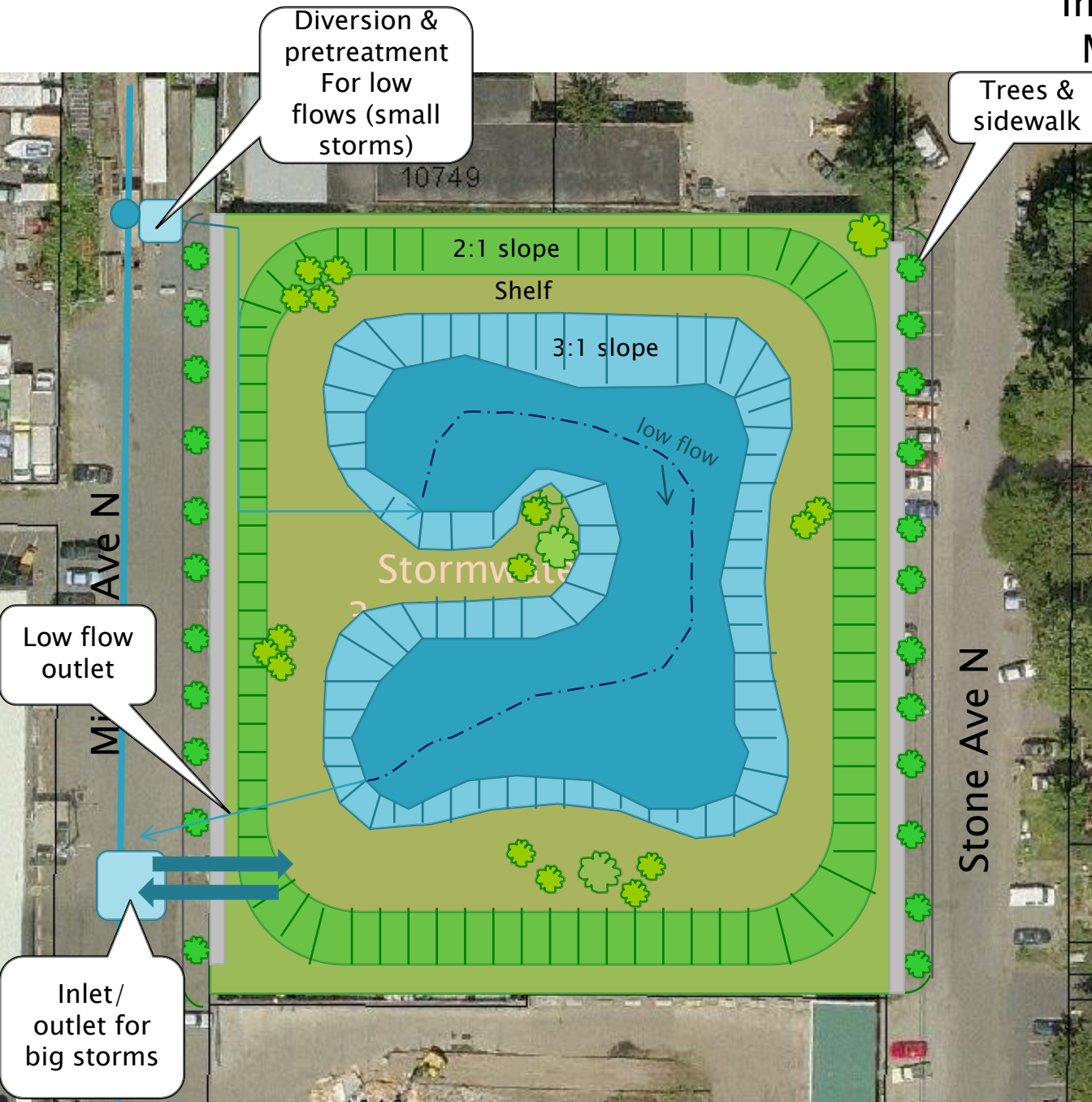
	Flat area grass w/ shrubs
	Sloped area w/ shrubs

Function: ~1-2x / decade, facility will fill with up to 7-ft of water.

Holds flood water up to the "25-year storm"



# Improved Concept for Midvale Stormwater Facility



Diversion & pretreatment  
For low flows (small storms)

Trees & sidewalk

- Flat area grass w/ shrubs
- Sloped area w/ shrubs
- Shallow water
- Deep water (3 ft)

Function: ~1-2x / decade, facility will fill with up to 7-ft of water.

Facility will provide water quality treatment for most storm events.







The stormwater pond could look something like this.

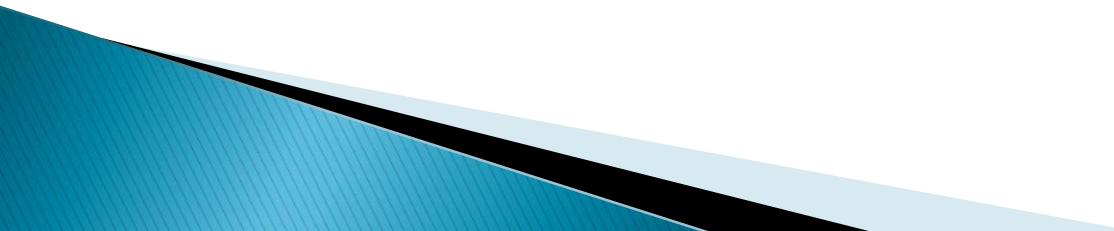




# Budget (Jan 2010)

Property	\$5M
Design	\$300K
Construction (SPU)	\$200K
Contractor	\$3M
Contingency	\$1M
<hr/>	
Total	\$9.8M

# Challenges

- ▶ Community view: Amenity or hazard?
  - ▶ Balance of detention and open space
  - ▶ Fencing
  - ▶ Adjacency to Aurora Ave and informal “transfer station”
- 





We don't want this look.





