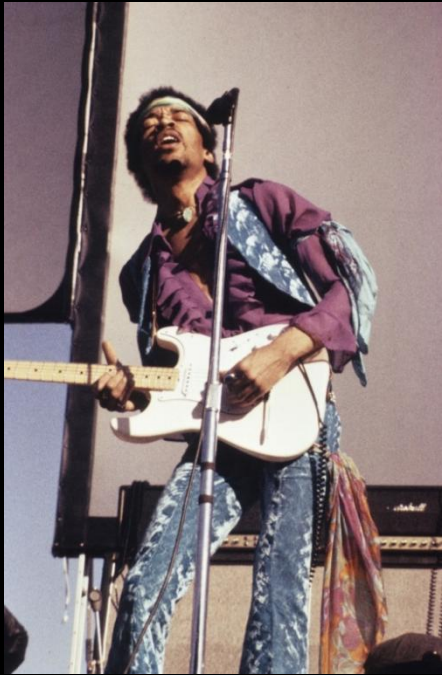


JIMI HENDRIX
PARK

Est. 2007



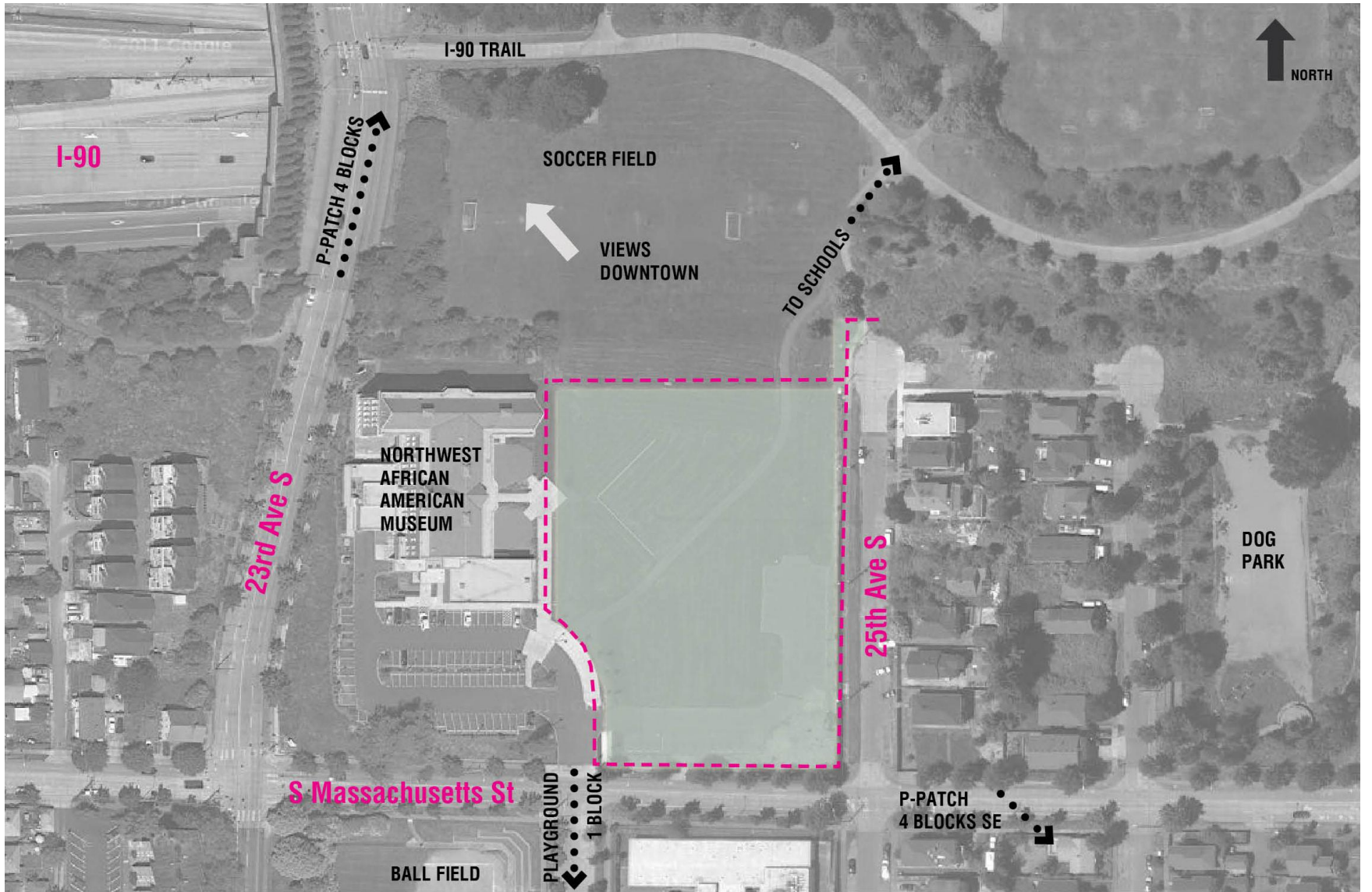
1942-1970





LOCAL CONTEXT MAP





I-90

I-90 TRAIL

P-PATCH
4 BLOCKS

SOCCER FIELD

VIEWS
DOWNTOWN

TO SCHOOLS

NORTHWEST
AFRICAN
AMERICAN
MUSEUM

23rd Ave S

25th Ave S

DOG
PARK

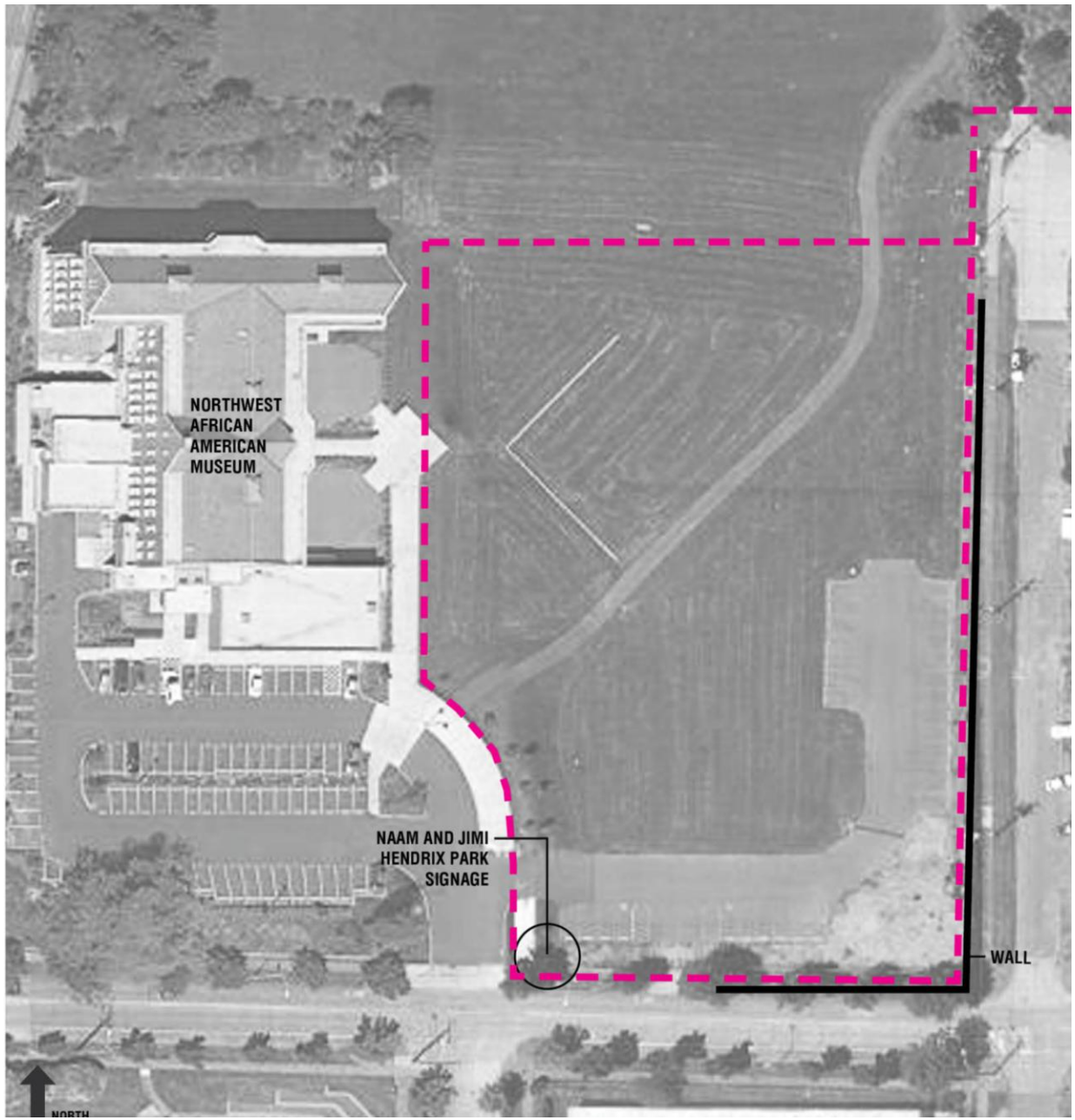
S Massachusetts St

BALL FIELD

PLAYGROUND
1 BLOCK

P-PATCH
4 BLOCKS SE





NORTHWEST
AFRICAN
AMERICAN
MUSEUM

NAAM AND JIMI
HENDRIX PARK
SIGNAGE

WALL





VIEW OF PARK FROM SOUTH (EXISTING PARKING LOT)



VIEW OF PARK FROM SOUTHEAST (MT. BAKER NEIGHBORHOOD)



NORTHWEST AFRICAN AMERICAN MUSEUM ENTRANCE





VIEW TO SOUTHEAST FROM NAAM ROOF



RETAINING WALL INHIBITS ACCESS FROM SOUTHEAST



PATH LOOKING NORTHEAST TO I-90 TRAIL



PATH LOOKING SOUTHWEST



VIEW TO MOUNT RAINIER



LITTLE WING OPTION



SPIRAL FLOWER OPTION



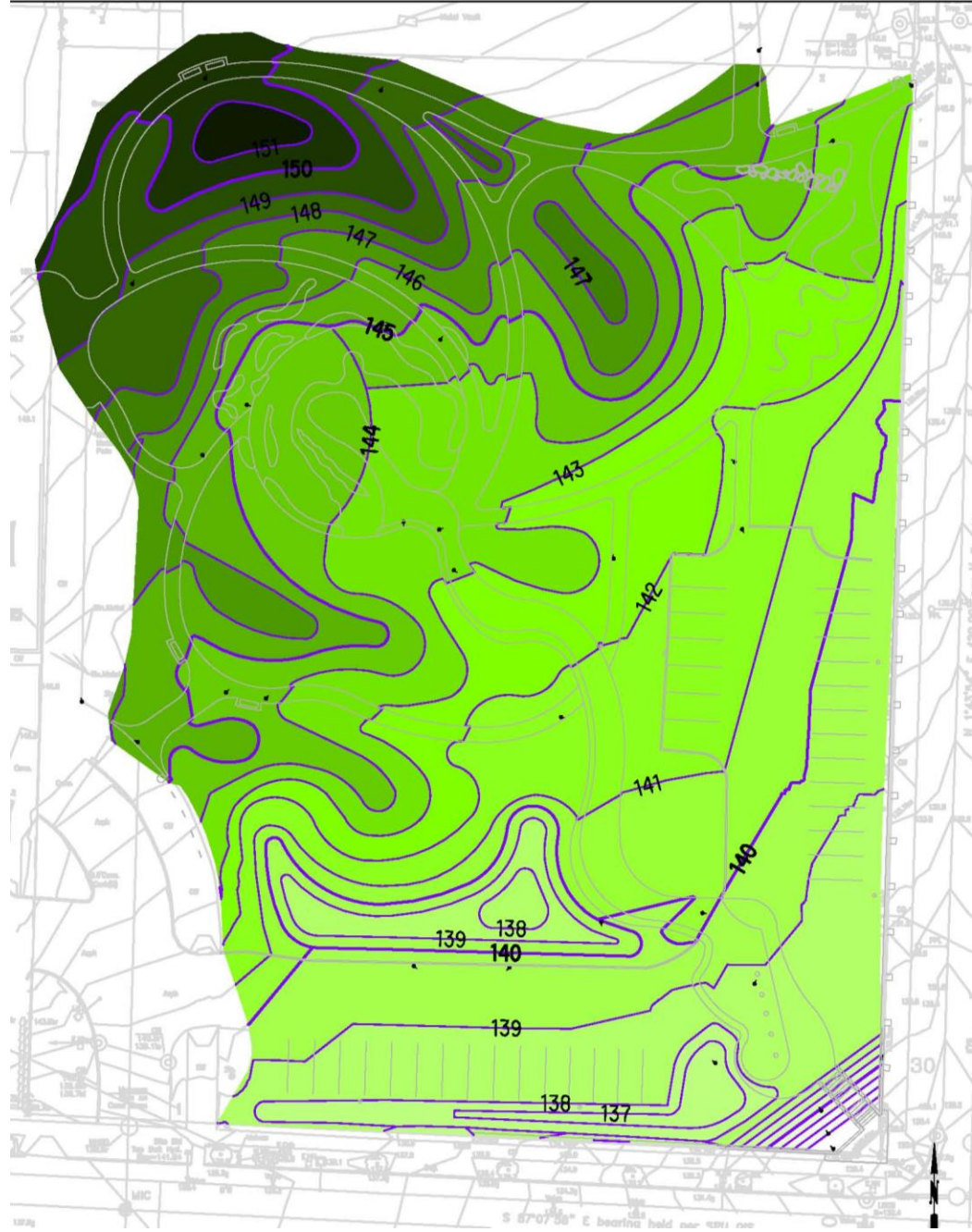
GUITAR OPTION



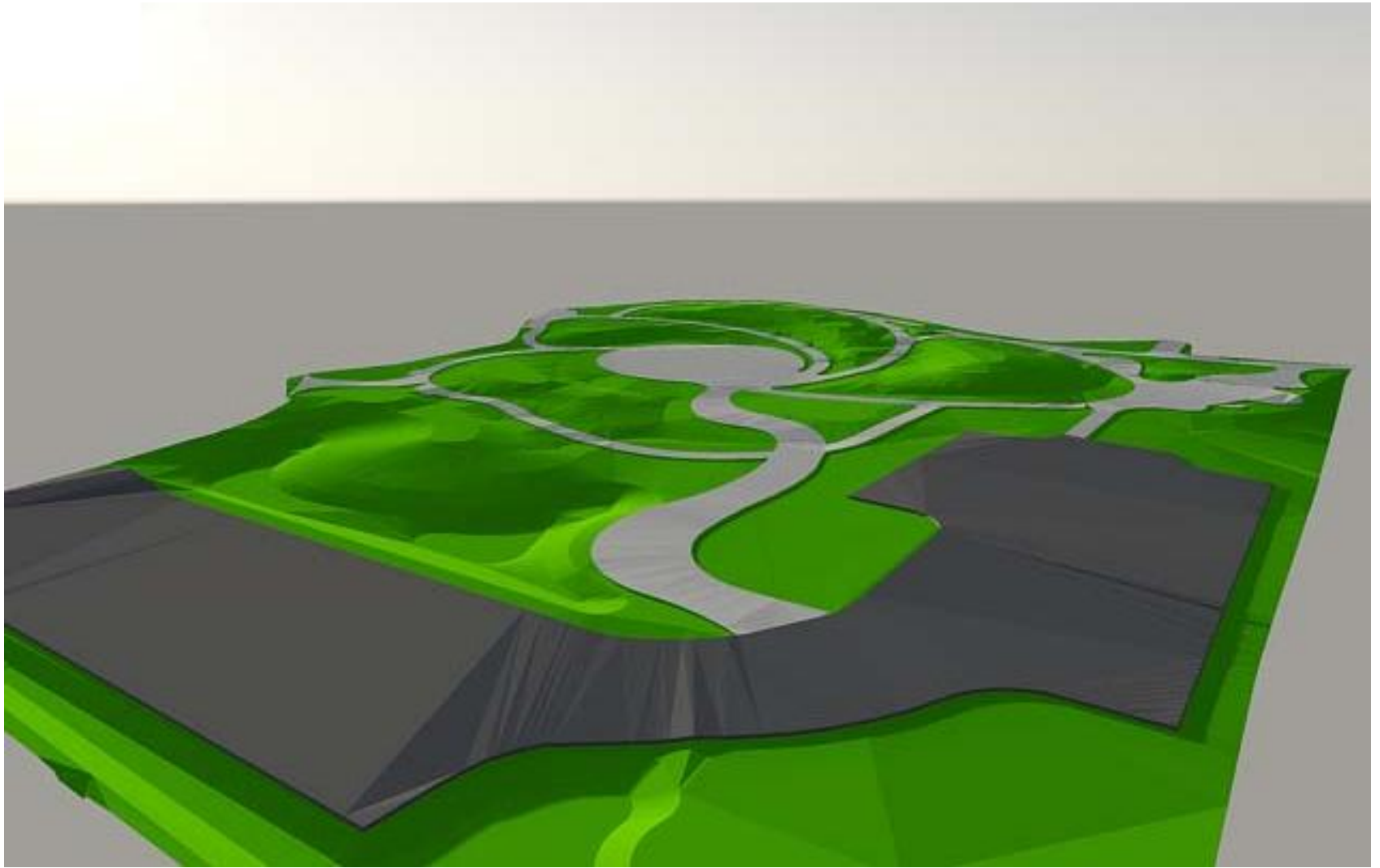
JIMI HENDRIX PARK



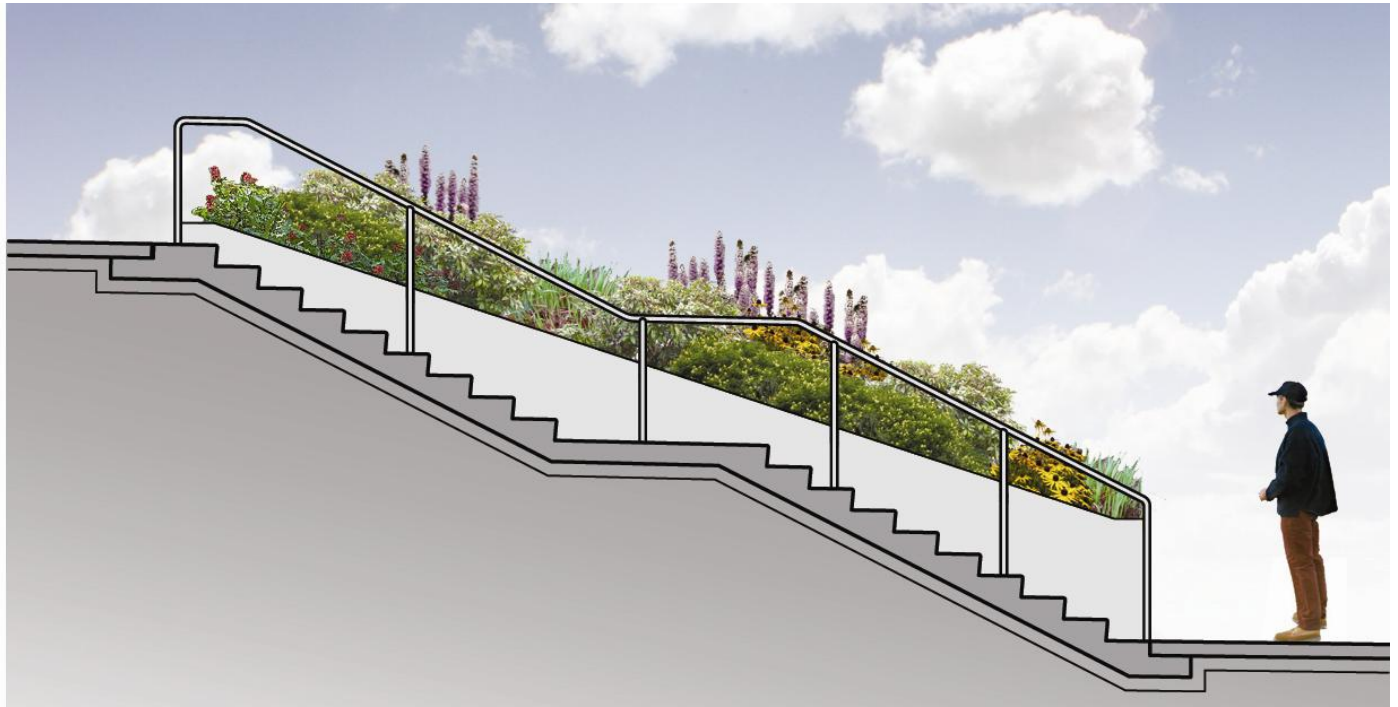
JIMI HENDRIX PARK



GRADING PLAN



VIEW FROM SOUTHEAST CORNER



THE GUITAR



Scirpus microcarpus -
Small Fruited Bullrush



Carex obnupta - Slough Sedge



Juncus effusus - Scouring Rush



Cornus s. 'Kelseyii' - Dwarf Red Twigg Dogwood



Douglas Spirea - Spiraea douglasii



Siberian Iris - Iris siberica

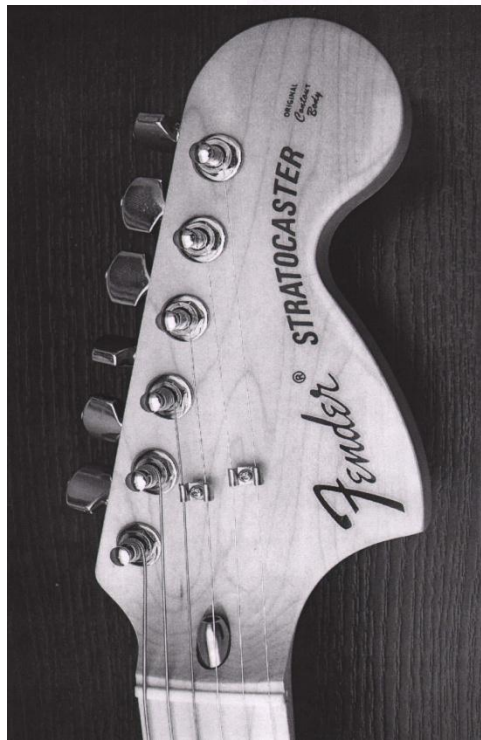


Purple Coneflower - Echinacea purpurea



Camassia quamash - Camas

STORMWATER GARDEN



THE GUITAR

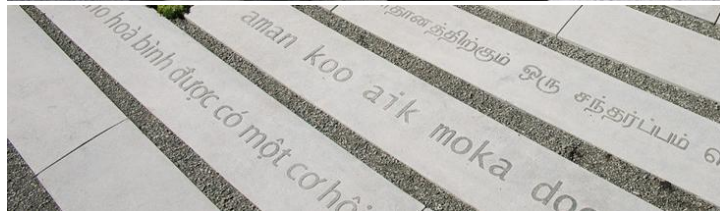


Jimi Hendrix Park
2280 JHP Timeline Path

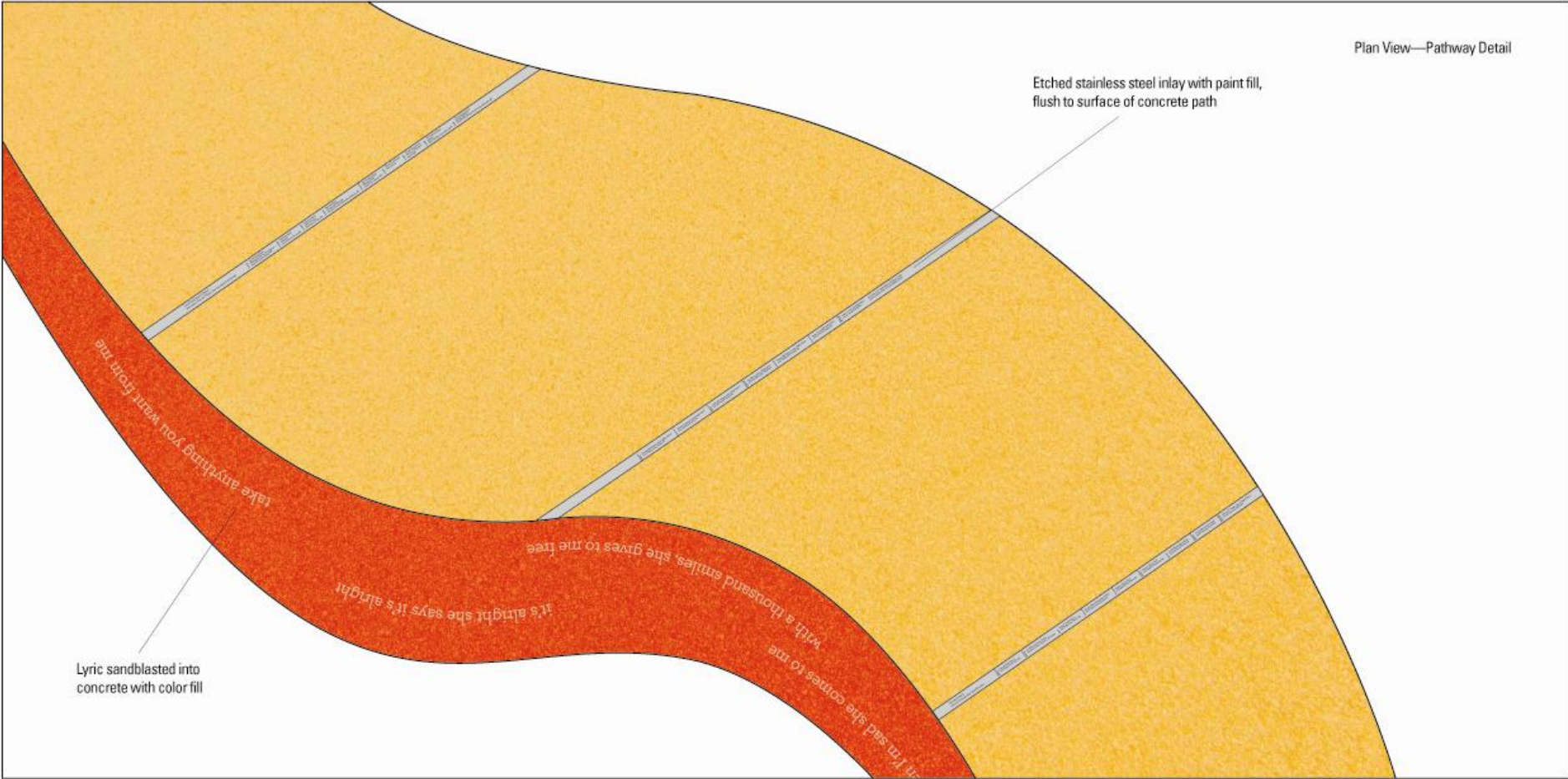
Plan View
1 of 4

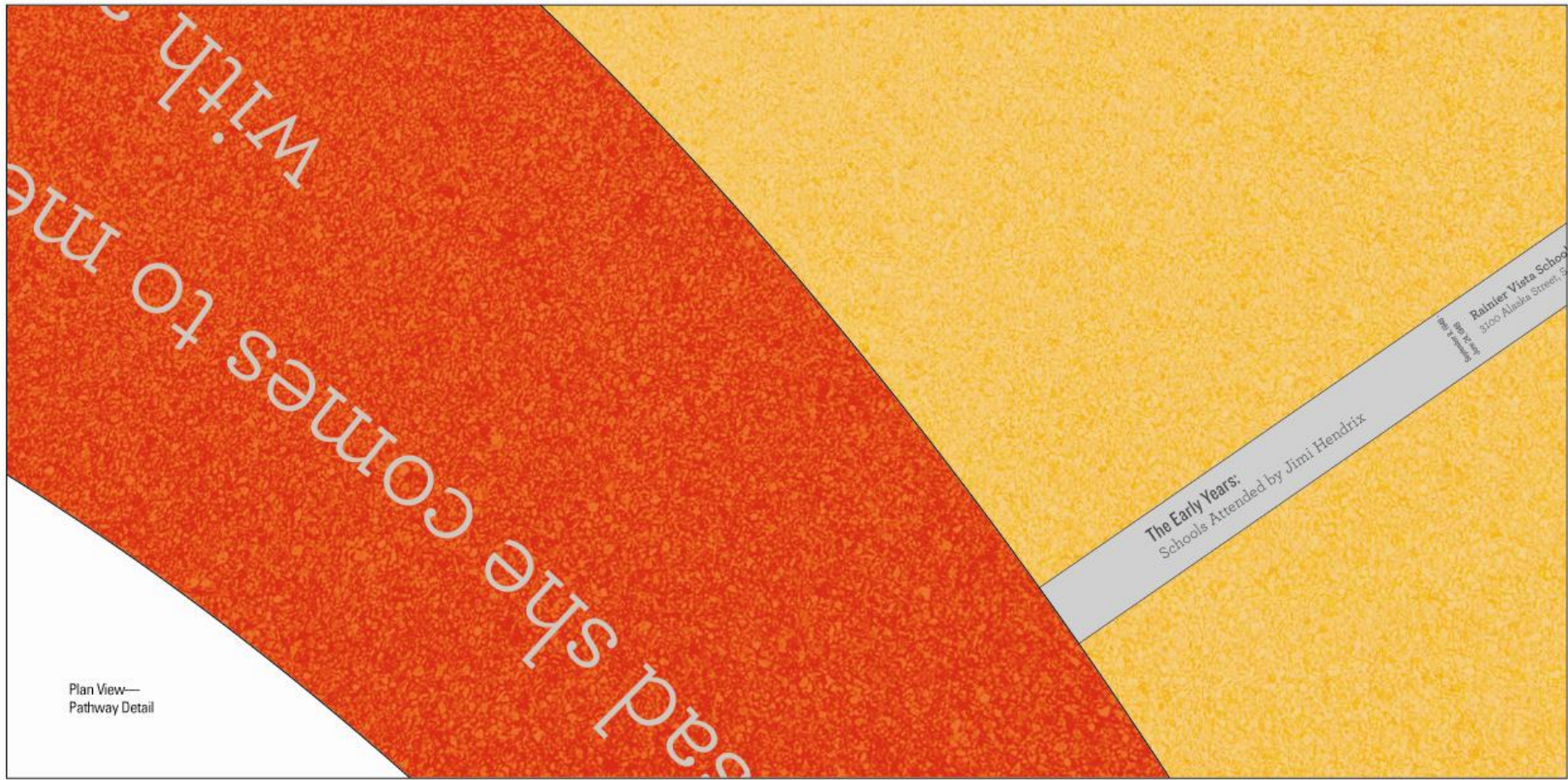
Concept Drawing
06/18/13

RMBVivid



TEXT IMBEDDED IN STEM OF GUITAR TIMELINE PATH





Plan View—
Pathway Detail

Etched Stainless Steel Inlays

11' 4 1/2"

The Early Years—
Schools Attended by Jimi Hendrix

<small>Hendrix 1966</small> Rainier Vista School 3100 Alaska Street, Seattle, WA	<small>Hendrix 1966</small> Sir Wilson Dawson Annex 910 Burnard Street, Vancouver, BC, Canada	<small>Hendrix 1966</small> Rainier Vista School 2300 Alaska Street, Seattle, WA	<small>Hendrix 1966</small> Horace Mann Elementary School 3400 E. Cleary Street, Seattle, WA	<small>Hendrix 1966</small> Rainier Vista School 2300 Alaska Street, Seattle, WA	<small>Hendrix 1966</small> Rainier Vista School 2300 Alaska Street, Seattle, WA	<small>Hendrix 1966</small> Leschi Elementary School 122 200th Avenue, Seattle, WA	<small>Hendrix 1966</small> Leschi Elementary School 122 200th Avenue, Seattle, WA	<small>Hendrix 1966</small> Edmond S. Meany Junior High School 201 110th Avenue E, Seattle, WA
--	---	--	--	--	--	--	--	--

Timeline Items: 16
Approximate Bars Needed: 2
Average Cap Height: 1/2"

Local Performance Dates—
Northwest Venues Where Jimi Hendrix Performed

<small>Hendrix 1966</small> The Rocking Kings Washington National Grand Army 3400 39th Avenue S, Renton, WA	<small>Hendrix 1966</small> Unknown Band Folk Hall 174 39th Street, Seattle, WA	<small>Hendrix 1966</small> Unknown Band Unknown Venue 120th Avenue, Seattle, WA	<small>Hendrix 1966</small> Various Bands Spanish Castle Ballroom Rogayia / Fred Dea Milnes Road, Midway, WA	<small>Hendrix 1966</small> The Rocking Kings Washington Hall 152 14th Street, Seattle, WA	<small>Hendrix 1966</small> The Rocking Kings Twinkl Terrace	<small>Hendrix 1966</small> The Rocking Kings "All Stars Engagement" Ballard, WA	<small>Hendrix 1966</small> The Rocking Kings Birkland 1200 E Madison Street, Seattle, WA	<small>Hendrix 1966</small> The Rocking Kings College Lake Park 1401 NE Woodlawn Drive, Woodinville, WA
--	--	---	---	---	--	---	--	--

Timeline Items: 22
Approximate Bars Needed: 2
Average Cap Height: 1/2"

Recording Studio Dates—
Studios Jimi Hendrix Recorded In

<small>Hendrix 1966</small> Sunday Sound Studio 2007 Duaneau Road, Hialeah, FL	<small>Hendrix 1966</small> Atlantic Studios 1500 York St. with Tony Bongioanni	<small>Hendrix 1966</small> Unknown Studio New York, NY with Don Cowie	<small>Hendrix 1966</small> Star Recording Studio 908 McKeown Avenue, Memphis, TN with Steve Cropper	<small>Hendrix 1966</small> Gold Star Studios 652 Santa Monica Blvd, Hollywood, CA with Russ Lee Brooks	<small>Hendrix 1966</small> Studio 76, Inc. 400 Broadway, New York, NY with Curtis Knight & The Squires	<small>Hendrix 1966</small> Abrams Studios New York, NY with Lonnie Youngblood	<small>Hendrix 1966</small> De Lane Las Music, Ltd. 102 Fitzroy, Camden, London, England for Jimi Hendrix Experience recording sessions	<small>Hendrix 1966</small> Regent Sound Studio (Studio A) 104-109 Tottenham Court Road, Camden, London
--	--	---	---	--	--	---	--	---

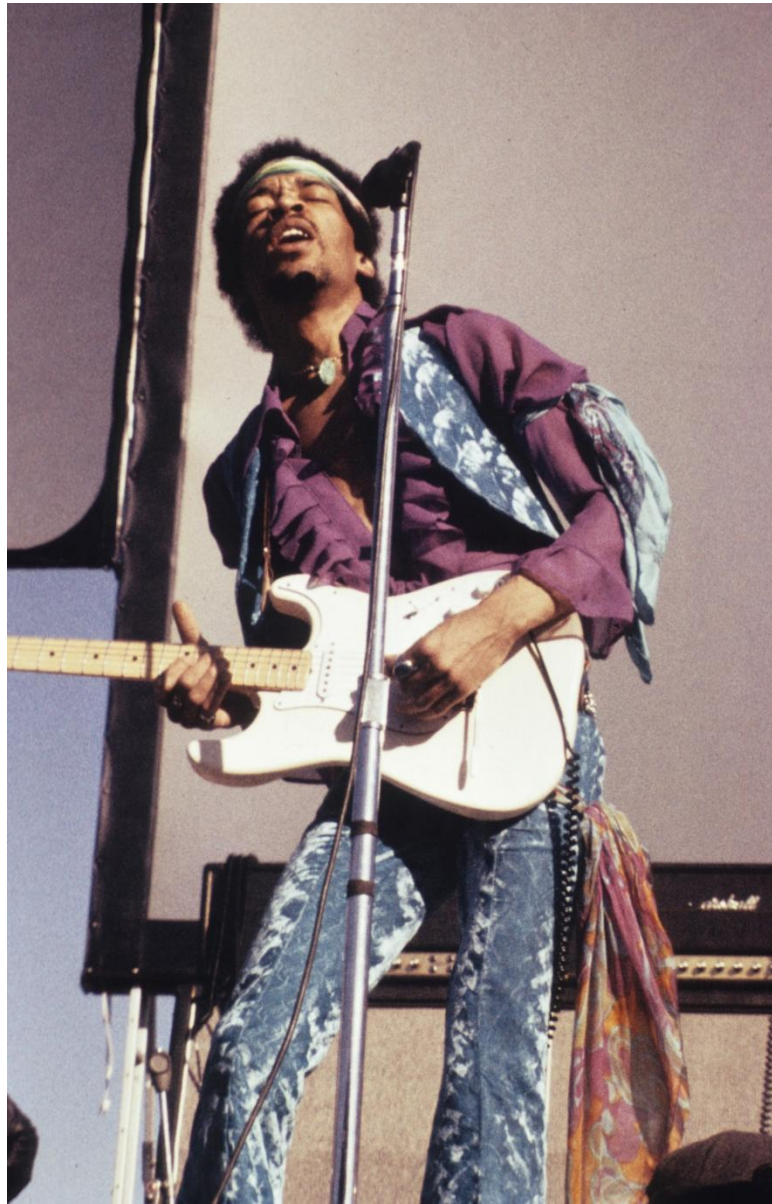
Timeline Items: 23
Approximate Bars Needed: 3
Average Cap Height: 1/2"

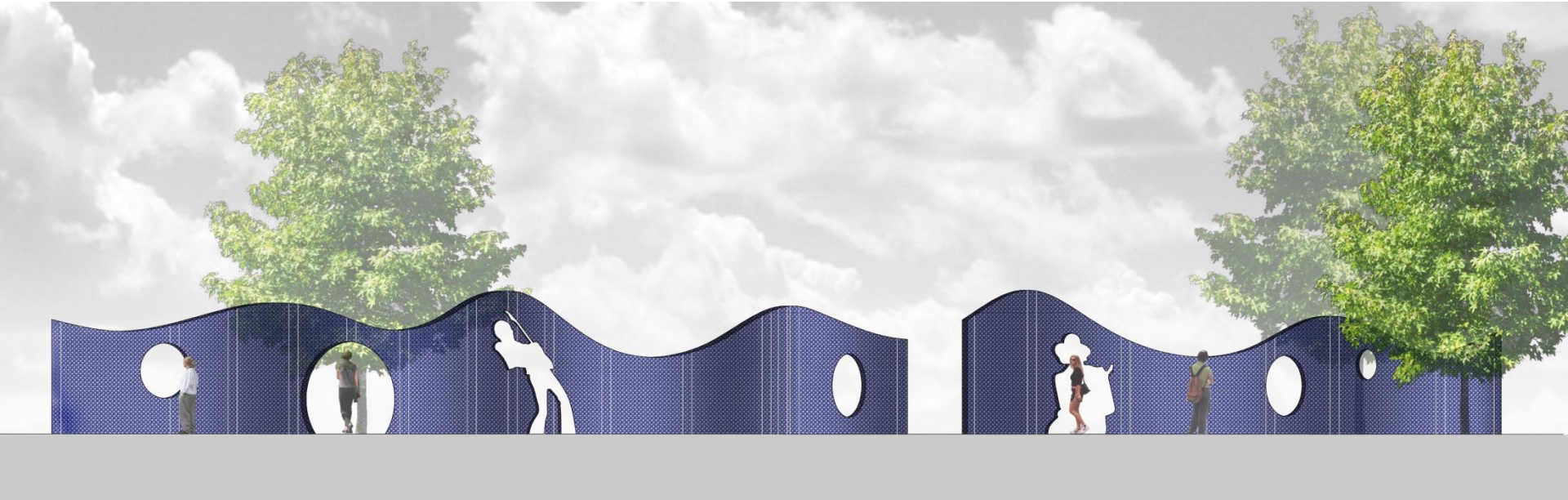
World-Wide Concert Dates—
Venues Jimi Hendrix Played Around the World

<small>Hendrix 1966</small> Spanish Castle Ballroom Rogayia / Fred Dea Milnes Road, Midway, WA	<small>Hendrix 1966</small> The Apollo Theater 253 West 125th Street, New York, NY	<small>Hendrix 1966</small> The Club Cheateh 52 Broadway, New York, NY	<small>Hendrix 1966</small> Cafe Wha? 100 MacDougal Street, New York, NY	<small>Hendrix 1966</small> Scotch of St. James 21 Mason's Yard London SW1	<small>Hendrix 1966</small> Novelty Cinema Evreux, France	<small>Hendrix 1966</small> L'Olympia Paris, France	<small>Hendrix 1966</small> Big Apple Club Munich, Germany	<small>Hendrix 1966</small> "Sweady Steady Go!" BBC Rediffusion Studios Kingway, City of Westminster, London, England
--	--	--	--	--	---	---	--	---

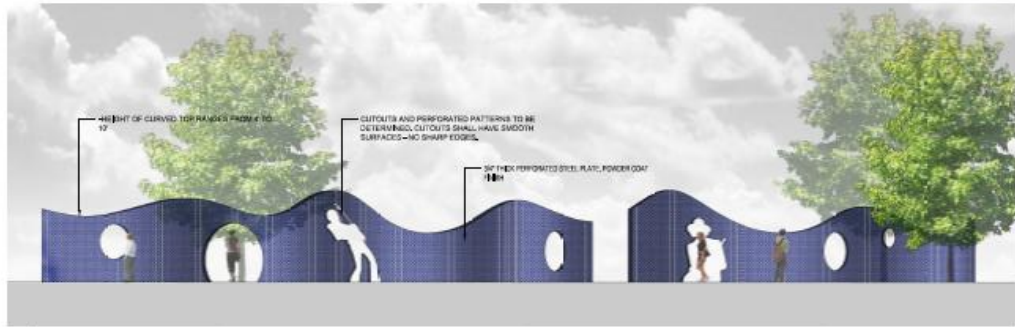
Timeline Items: 41
Approximate Bars Needed: 4
Average Cap Height: 1/2"

Jimi Hendrix Park 2280 JHP Timeline Path	Scale 1.5" = 1' Plan View 4 of 4	Concept Drawing 06/18/13	RMBVivid
---	-------------------------------------	-----------------------------	----------



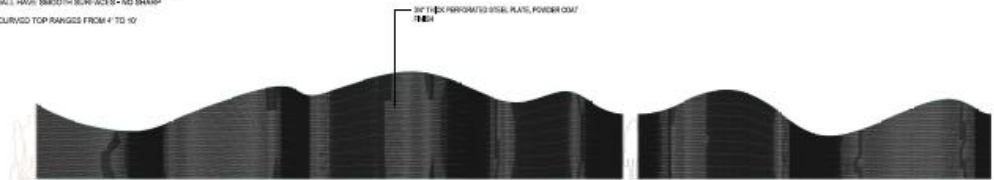


SOUND WALL FEATURE

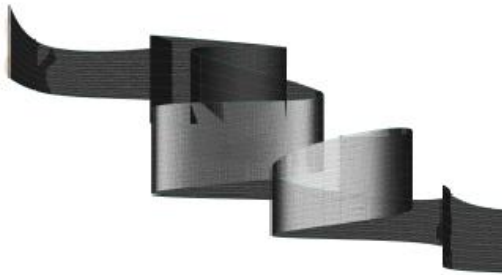


4 WAVE WALL ELEVATION
0.00'

NOTES:
 • CUTOUTS AND PERFORATED PATTERNS TO BE DETERMINED.
 • CUTOUTS SHALL HAVE SMOOTH SURFACES—NO SHARP EDGES.
 • HEIGHT OF CURVED TOP RANGES FROM 4' TO 10'



3 WAVE WALL ELEVATION
0.00'



2 WAVE WALL - PERSPECTIVE
0.00'



SOUND WAVE FEATURE



Arctostaphylos uva-ursi - Kinnikinnick



Liatris spicata - Spike Gayfeather



Achillea filipendulina - Yarrow



Rudbeckia hirta - Black-Eyed Susan



Penstemon



Fragaria - Wild Strawberry



Echinacea purpurea - Purple Coneflower



Spiraea japonica



Campanula "Bernice"



Myosotis - Forget-Me-Not



Dicentra - Bleeding Heart

BUTTERFLY GARDEN



Paulonia

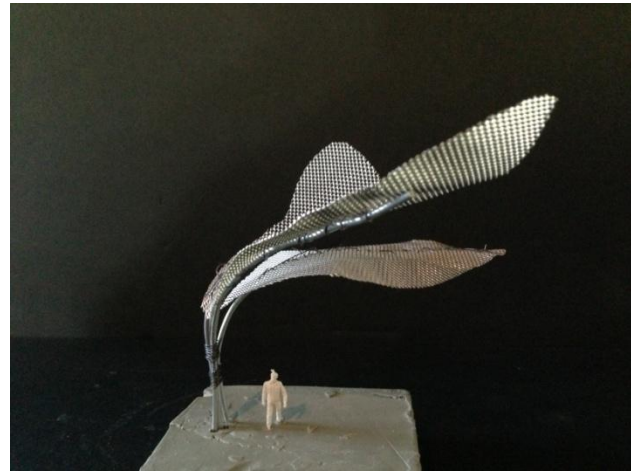
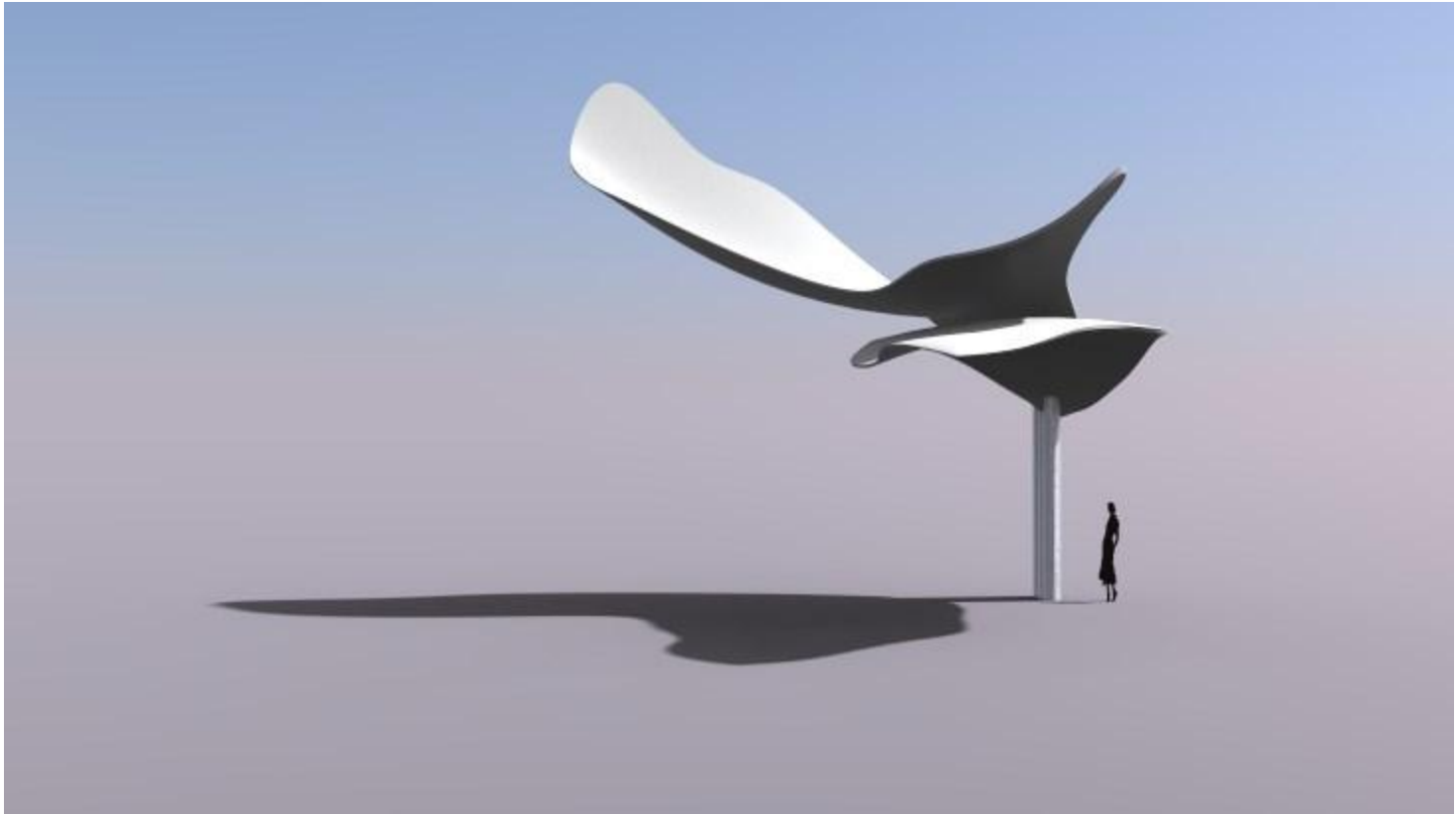


Betula jacquemontii - Jacquemonti Birch

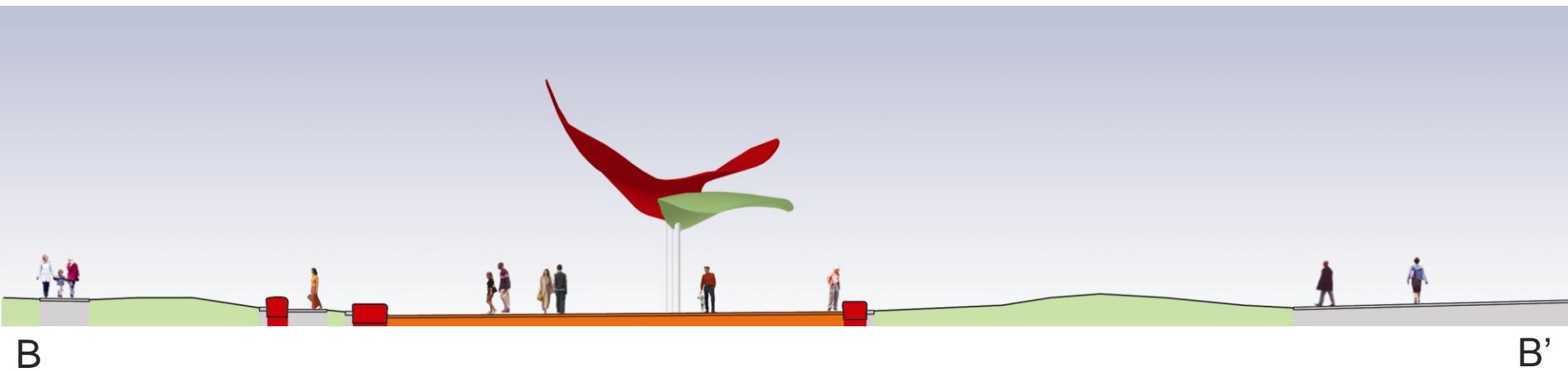
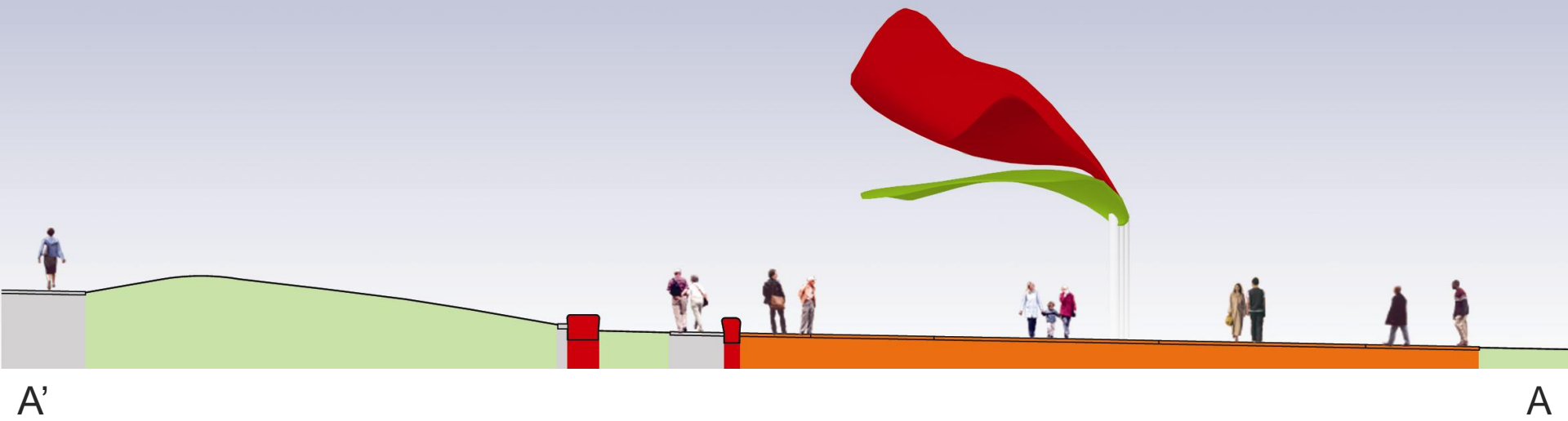
SITE TREES



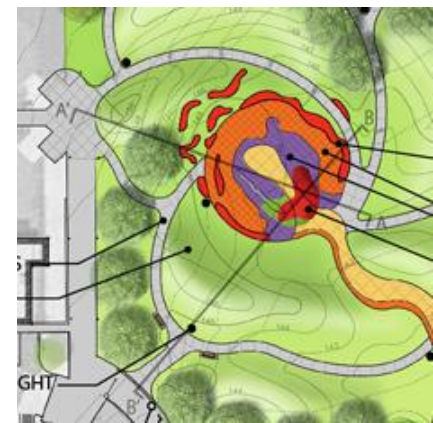




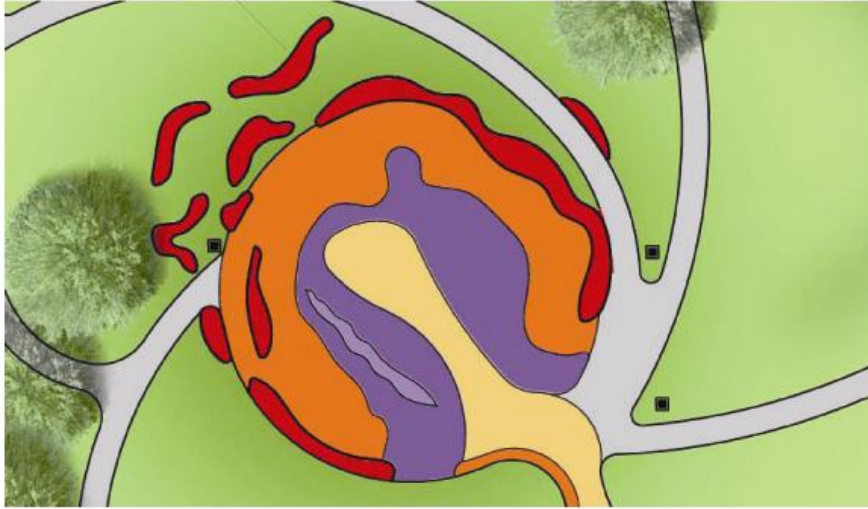
CANOPY



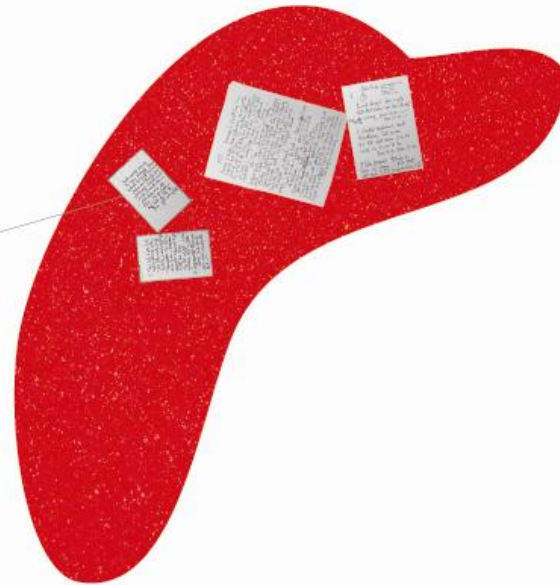
CENTRAL PLAZA



Plan View – Concrete Benches



Plan View – Concrete Bench Tops



Etched and filled stainless steel inlays
Flush to surface of concrete bench

Press
like
IZABELLA
NO. 1.
ROY TAN

ASTRO MAN and STRATO-WOMAN THE COSMIC LOVERS OF THE UNIVERSE and maybe

please understand what
I'm trying to say

I love the comics so It's easy
to say ---

I had a dream just the
other day

that I was ASTRO-Man

I'm Astro-man I'm flying higher than
that fagot Superman ...
no ever could --- ever would.

They call me ASTRO man ...
If you signal, I'll give you a hand ...
to Blow out what I can ...
in the rest of your Mind.

(then thrilling suspense tape music comes in
as narrator gives setup of
scene



Midnite lightning
flashing ... all around my horse ...
Love ... please --- Hold me, Hold me ...

~~books and dark~~
tell me why ... It's ~~hitting~~ ^{crashing} so close to
our trees and little scenes ---
Thunder ... ~~clashing~~ ... the church bells ^{turning} at 12 ~~to~~ ^{cheers}.

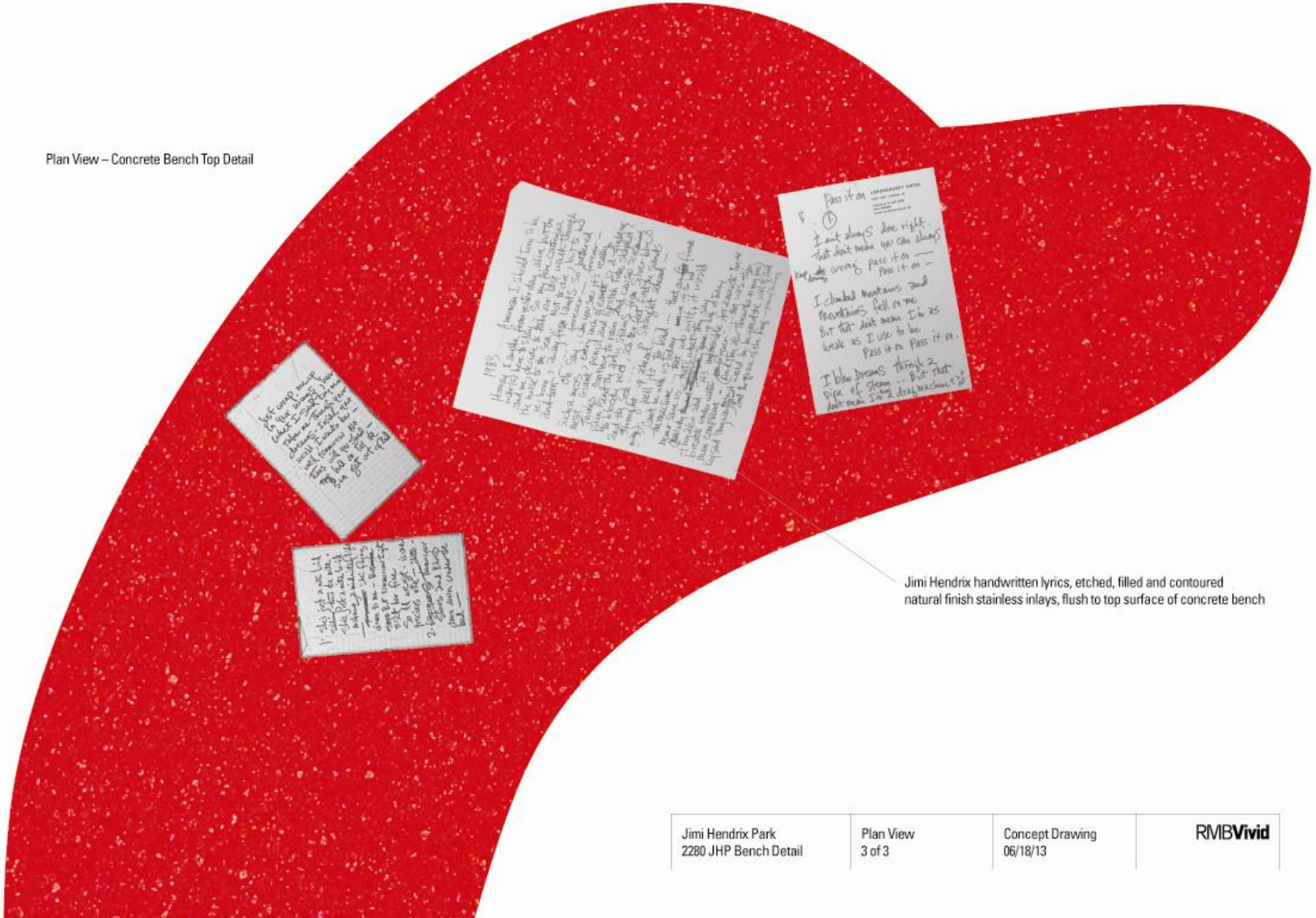
Blue light flashing ... Shadows leap in ^{lightning}
~~flashes~~ ... of nites - spent ... in the past
years of the Barn full of -
full of witches and ghosts of dreams.
and ~~the~~ Happy Queens.

Jimi Hendrix handwritten lyrics, etched, filled and contoured natural finish stainless inlays, flush to top surface of concrete bench



Plan View – Concrete Bench Top Detail

Plan View – Concrete Bench Top Detail



Jimi Hendrix handwritten lyrics, etched, filled and contoured natural finish stainless inlays, flush to top surface of concrete bench

Jimi Hendrix Park 2280 JHP Bench Detail	Plan View 3 of 3	Concept Drawing 06/18/13	RMBVivid
--	---------------------	-----------------------------	----------

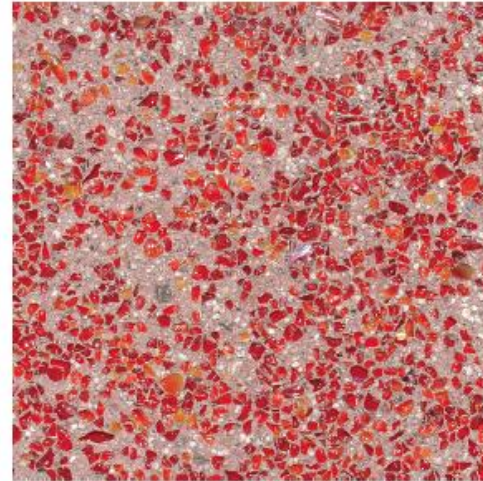
Specialty Paving

Product: Lithocrete

Description:

Poured in place concrete
Integral color
Surface seeded aggregates,
Saw-cut joints

Pricing: \$22 per square foot



Detail of Lithocrete paving with red glass



Lithocrete Paving with saw-cut joints

PROVIEW SUBMITTAL

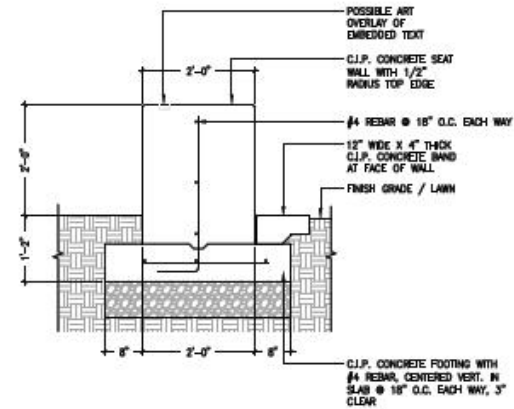
Site Furnishings

Concrete Seat Walls

Description:

- Cast-in-place concrete with reinforcing
- Saw-cut joints
- With possible art overlay of embedded text

Pricing: \$220 per lineal foot



seat wall detail

Lakeside Litter Receptacle

Manufacturer: Landscape Forms

Description:

- Side-opening, plain
- Powdercoat color "silver"
- Surface Mounted
- Unit is emptied by lifting trash bag from the top.

Pricing: \$970 ea.



select powdercoat color "silver" (not pictured)

PROVIEW SUBMITTAL

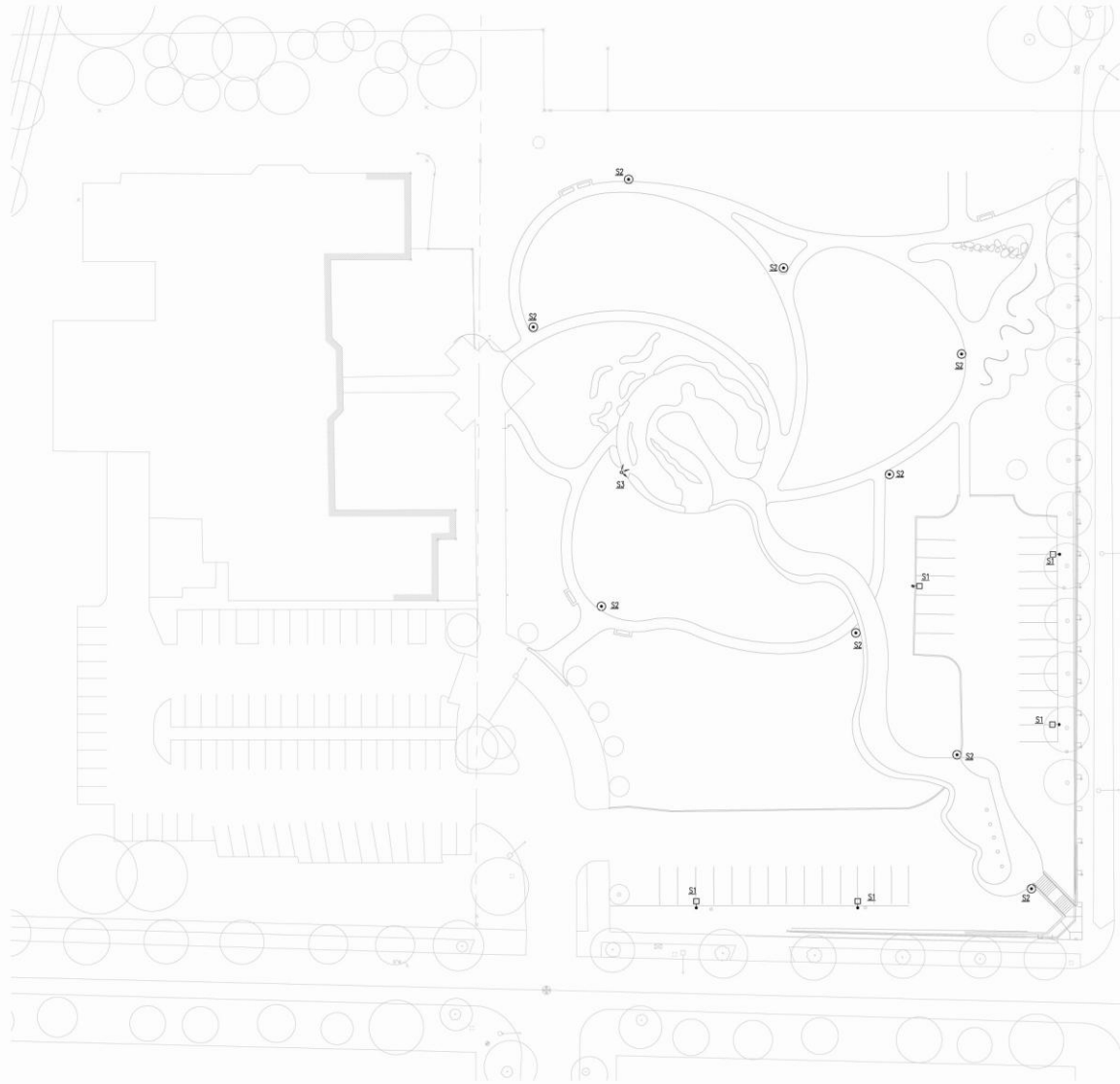


LANDSCAPE FORMS 'BOLA' BIKE RACK



FORMS+SURFACES 'KNIGHT' BENCH

PROVIEW SUBMITTAL



GENERAL NOTES:

- FOR ILLUMINATING ENGINEERS SOCIETY (IES) RP-20-88, PARKING AREAS SHOULD BE LIGHTED TO A 2 MIN WITH A 20:1 MAX TO MIN ILLUMINATION LEVEL.
- FOR IES RP-22-89 PEDESTRIAN WALKWAYS SHOULD BE LIT TO A MIN. AVERAGE OF .5fc.
- ALL LIGHTS TO BE EQUIPPED WITH INTEGRAL PHOTO SENSORS TO TURN LIGHTS OFF DURING DAYLIGHT HOURS.

LUMINAIRE SCHEDULE

- S1 POLE MOUNTED AREA LIGHT**
- SIZE: 18 INCH DIAMETER X 24 INCH LONG X 7 INCH HIGH
 - LAMP: LED ARRAY, 4000K, 70 CRI MIN 4837 LUMENS AT 59 WATTS MIN. MODULAR ARRAY FOR EASE OF REPLACEMENT
 - BALLAST: VOLTAGE AS REQUIRED, INTEGRAL ELECTRONIC POWER SUPPLY AND DRIVER
 - CONTROL: INTEGRAL PHOTO CELL TO TURN LIGHT OFF DURING DAYLIGHT HOURS. HOUSE SIDE SHIELD ON FIXTURES ADJACENT TO THE STREET TO PREVENT LIGHT SPILL BEYOND THE SITE.
 - POLE: 15 FOOT SQUARE ALUMINUM POLE.
 - OPTICS: TYPE W DISTRIBUTION WITH HOUSE SIDE SHIELD AS NOTED ABOVE
 - FINISH: POWDERCOAT STANDARD FINISH. COLOR TO BE SELECTED BY THE LANDSCAPE ARCHITECT
 - MANUFACTURER: LITHONIA OMEGA MW-LED, KM, OR APPROVED
- S2 POLE MOUNTED PEDESTRIAN LUMINAIRE**
- SIZE: 18 INCH DIAMETER X 7 INCH HIGH
 - LAMP: LED ARRAY, 4000K, 70 CRI MIN 4837 LUMENS AT 59 WATTS MIN. MODULAR ARRAY FOR EASE OF REPLACEMENT
 - BALLAST: VOLTAGE AS REQUIRED, INTEGRAL ELECTRONIC POWER SUPPLY AND DRIVER
 - CONTROL: INTEGRAL PHOTO CELL TO TURN LIGHT OFF DURING DAYLIGHT HOURS.
 - POLE: 12 FOOT ROUND ALUMINUM POLE.
 - OPTICS: TYPE V DISTRIBUTION WITH HOUSE SIDE SHIELD AS NOTED ABOVE
 - FINISH: POWDERCOAT STANDARD FINISH. COLOR TO BE SELECTED BY THE LANDSCAPE ARCHITECT
 - MANUFACTURER: LITHONIA OMEGA MW-LED, KM, OR APPROVED
- S3 POLE MOUNTED MULTI-HEADED AREA LUMINAIRE**
- LUMINAIRE SIZE: 7 INCH DA X 9 INCH DEEP X 12 INCH LONG.
 - LAMP: LED ARRAY, 5000K, 4400 LUMEN HIGH CRI, 23 DEGREE BEAM MODULAR ARRAY FOR EASE OF REPLACEMENT
 - BALLAST: VOLTAGE AS REQUIRED, INTEGRAL ELECTRONIC POWER SUPPLY AND DRIVER
 - CONTROL: INTEGRAL PHOTO CELL TO TURN LIGHT OFF DURING DAYLIGHT HOURS. LOCKABLE SWITCH AT POLE BASE FOR MANUAL OPERATION.
 - POLE: 30 FOOT SQUARE 4 INCH X 4 INCH ALUMINUM POLE.
 - OPTICS: 33 DEGREE BEAM WITH GLASS SHIELD SHOOT
 - FINISH: POWDERCOAT STANDARD FINISH. COLOR TO BE SELECTED BY THE LANDSCAPE ARCHITECT
 - MANUFACTURER: (SH) BEGA 7550 LED ON A SINGLE POLE. ALTERNATE MANUFACTURERS: LOMAN, SELUX, ERCO, LUMERE, OR APPROVED

>>>>CAUTION<<<<
CALL BEFORE YOU DIG!
 NOT LESS THAN TWO OR MORE THAN TEN BUSINESS DAYS PRIOR TO COMMENCING EXCAVATION OR DEMOLITION, SECURE THE SERVICES OF A COMMERCIAL UNDERGROUND UTILITIES LOCATION SERVICE TO IDENTIFY BELOW-GROUND IMPROVEMENTS THAT MAY NOT BE INDICATED ON THE DRAWINGS. FOR IRRIGATION SYSTEMS, CALL SEATTLE PAVED ILLUMINATING BRIG (206) 884-7870.
 >>>>800 424 5555<<<<

100% DESIGN DEVELOPMENT

3			
2			
1			
NO.	REVISION	AS BUILT	DATE

REVIEWED: _____ PARK ENGINEER _____ DATE _____

All work done in accordance with the City of Seattle Standard Park and Recreation Plans as shown on the same project sheets, and amendments to the Standard Plans.

PAE CONSULTING ENGINEERS, INC.
 800 3rd Ave, Suite 200 | Portland, OR 97204 | P: 503 228-2821
 425 Columbia St, Suite 1200 | Seattle, WA 98101 | P: 206 464-7800
 Project No: 11-001 www.pae-engineers.com

MURASE ASSOCIATES
 1015 1st Avenue, Suite 1000 | Seattle, WA 98101
 P: 206 464-4437 F: 206 464-7244
 www.murase.com



FRIENDS OF JIMI HENDRIX PARK

JIMI HENDRIX PARK

SITE PLAN - LIGHTING

DESIGNED: GCP/ZS	DATE: 31 JAN 2012
DRAWN: TON	CHECKED: SP
ORDINANCE NO.: E	SHEET: 22 of 23
CONTRACT NO.: E	E2.00A
SCALE: 1" = 20'	



Portland | San Francisco | Seattle
 Lumina.com

1 SITE PLAN - LIGHTING - OPTION A
 SCALE: 1" = 20'-0"

Date: 6/7/12 Time: 4:27pm File: P:\2011\11-001\01 - LUMINA\Drawings\DWG\11-001E2.00A.dwg User: jharris

LIGHTING PLAN

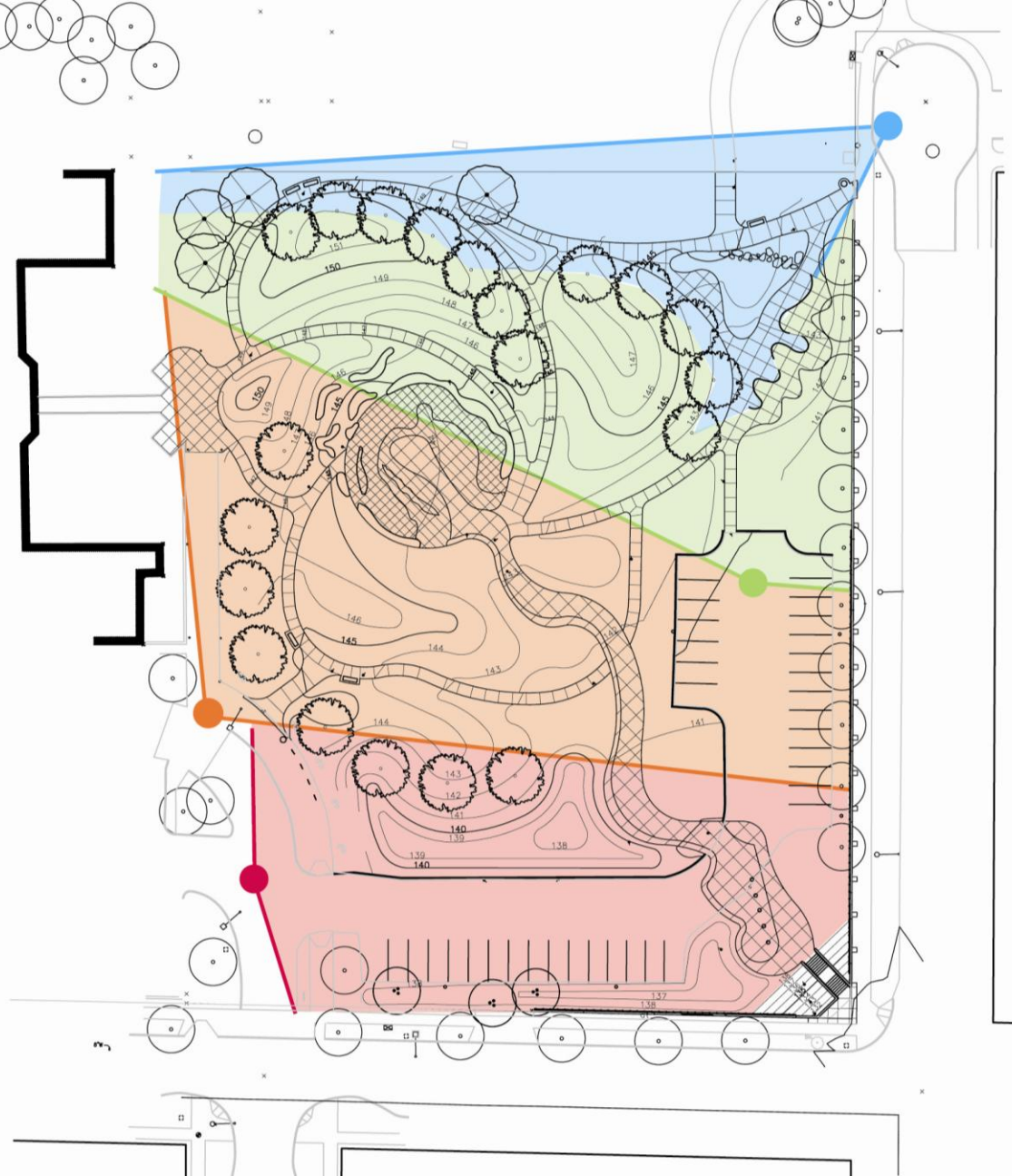


IN-GRADE FLOOD LIGHT BY BEGA



PEDESTRIAN HEIGHT POLE TOP
LUMINAIRE BY BEGA

LIGHTING



VIEW CORRIDOR STUDY



PROVIEW SUBMITTAL



PROVIEW SUBMITTAL

Trees

Botanical name: *Betula jacquemontii*, multi-trunk
Common name: Multi-trunked Himalayan Birch

Description:

Deciduous
White bark
Yellow fall color
Full sun
Ability to withstand saturated soils
Drought tolerant

Design intent:

Contrasting bark provides year-round interest



Birch trees in summer



Birch trees in winter

Shrubs

Botanical name: *Callicarpa bodonier*
Common name: Beautyberry bush

Description:

Medium to large deciduous shrub
Fall berries
Full sun
Attracts birds

Design intent:

Arching branches with distinctive purple berries
repeat purple theme into fall.



Unique purple berries

Botanical name: *Kerria japonica*
Common name: Kerria

Description:

Medium to large deciduous shrub
Shade to Full sun
Fast growing
Drought tolerant
Yellow spring blossoms

Design intent:

Provides intense and vivid spring color.



Yellow flowers in spring

Shrubs

Botanical name: *Viburnum davidii*
Common name: David Viburnum

Description:
Low evergreen shrub
Extremely hardy
Part to full sun
Attracts birds

Design intent:
Creates a hardy and evergreen carpet at the corner entry feature.



Fall fruit

Vines

Botanical name: *Parthenocissus tricuspidata*
Common name: Boston Ivy

Description:
Deciduous woody vine
Extremely hardy
Part to full sun
Excellent fall color

Design intent:
Cover existing concrete wall with vines to provide an inexpensive green element and to discourage graffiti.



Fall color

Rain Garden Plants

Botanical name: *Iris pseudacorus*
Common name: Yellow iris

Description:
Herbaceous perennial
Bright yellow flowers
Tolerates submersion
Bird habitat

Design intent:
Provides vertical structure and color in the rain garden plantings.



Long spring bloom

Botanical name: *Juncus effusus*
Common name: Soft rush

Description:
Evergreen grass
Clumping
Tolerates submersion
Easy care

Design intent:
Tough plant that crowds out weed and provides year long interest.



Soft rush tolerates poor soils

Rain Garden Plants

Botanical name: *Cornus kelseyii*
Common name: Dwarf red-twig dogwood

Description:

Compact deciduous shrub
Winter interest
Ability to withstand saturated soils
Full sun
Drought tolerant

Design intent:

Low, mounding habit crowds out weeds and provides exciting winter contrast.



Bright winter interest.

Botanical name: *Symphoricarpos albus*
Common name: Snowberry bush

Description:

Medium deciduous shrub
Winter white berries
Shade to Full sun
Fast growing
Drought tolerant
Bird habitat

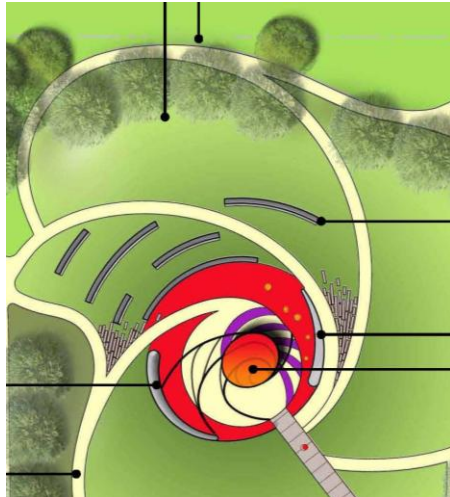
Design intent:

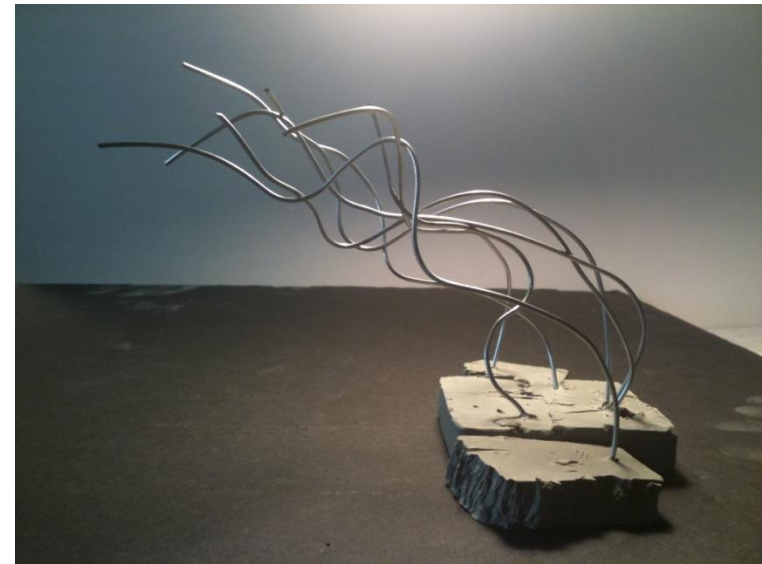
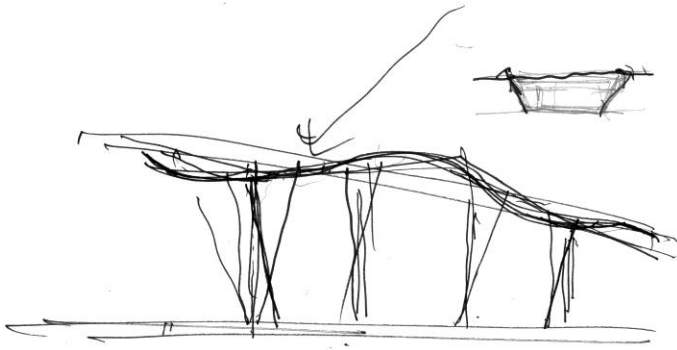
Contrasting open habit as counterpoint to dense plantings.

White berries in winter repeat white in adjacent Birch bark.

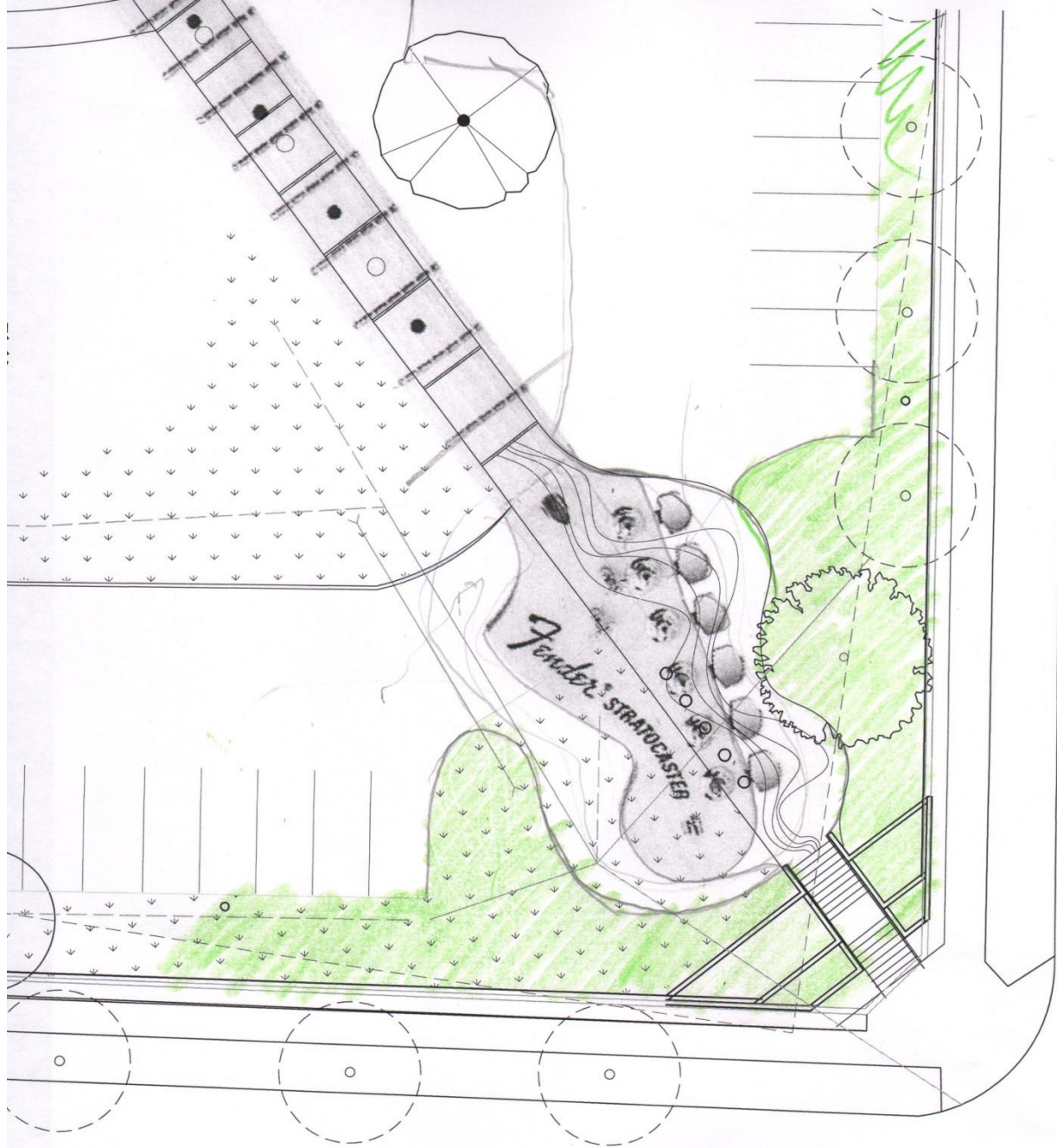


Delicate summer foliage.





CENTRAL CANOPY



1/16" = 1'





GUITAR



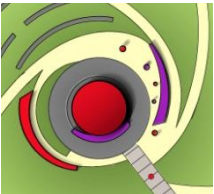
LITTLE WING



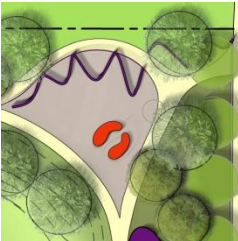
SPIRAL FLOWER



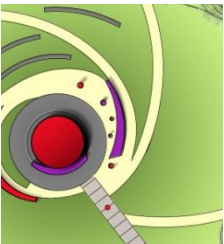
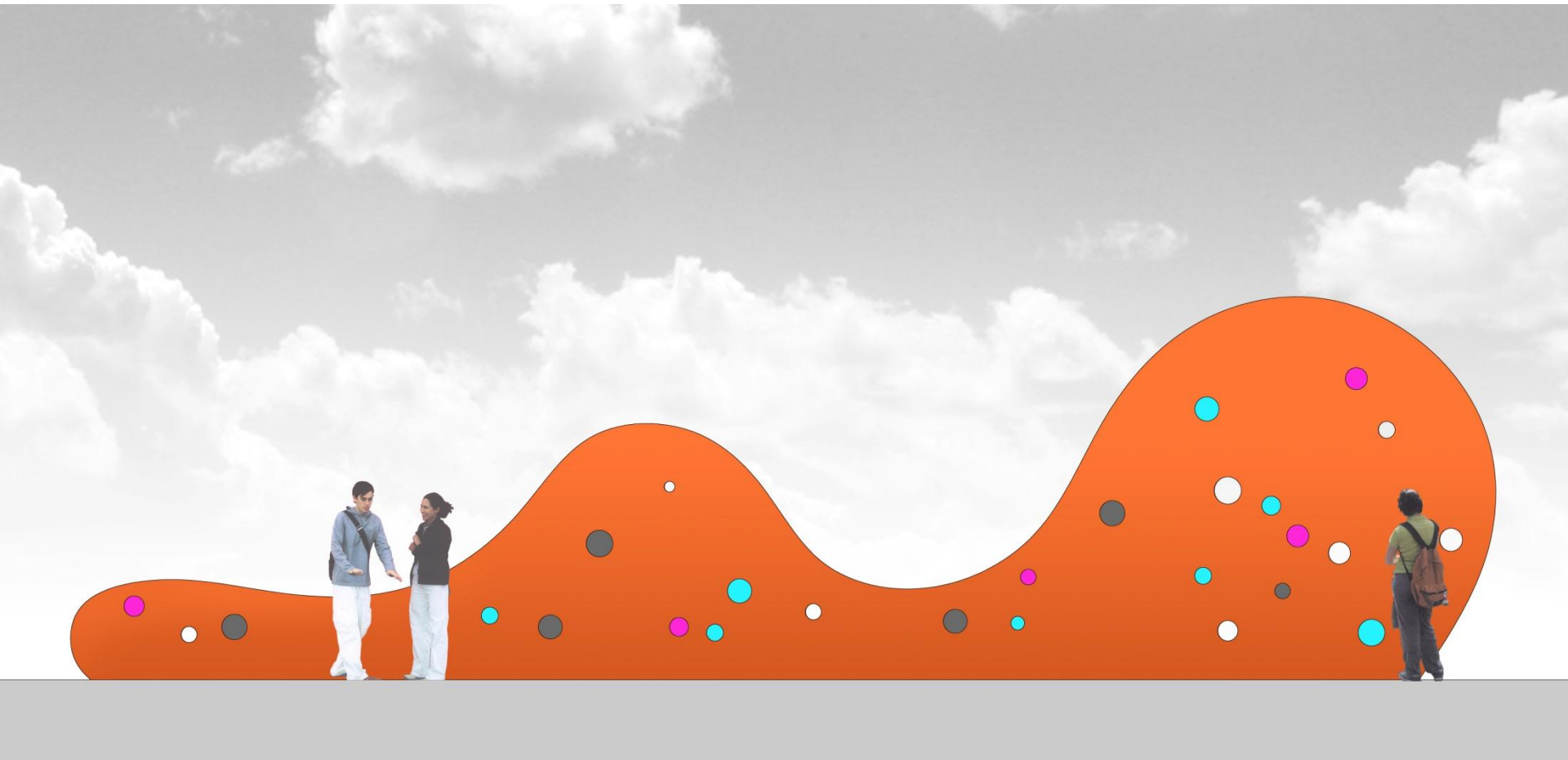
RAINWATER CANOPY



CENTRAL CANOPY



SCULPTURAL SEATING SHELTERS



WALL OF SOUND

Inspirational/Influential
 Global
Flamboyant
 Expanded-black-culture
 hero Bold New
 On-the-edge Energy
 Individual Exciting
 Open-mind
 Cool Expressive
 Isolated
 Best-of-the-best
 Blessed Ahead
 Performer
Innovative
 Celebration
 Color Dedication Poetic
 Love Freedom Stylish
 Legend True
 Pioneer
 Progressive
 Gentle
Music
 Spiritual
 Revolutionary Experimental
 Classic Talented
 Controversy
 Authentic
Artist/Painter
 Multi-generational
 Jazz
 Life Extraordinary
 Guitar Loud
 Handsome
Genius
 Sensitive Movement
 Trend-setter
 Adventurous
 Time
Exuberance
 Future
Creative









23RD AVENUE S.

SOCCER FIELD

I-90 TRAIL

NORTHWEST AFRICAN AMERICAN MUSEUM

BENCH

5' WIDE PATHS
LAWN

S. MASSACHUSETTS STREET

BERMS
PROPERTY LINE

SOUND WAVE WALL

SCULPTURAL SEATING SHELTERS

CONCRETE AND METAL SEATING

RAIN WATER CANOPY

WALL OF SOUND

CENTRAL CANOPY AND STAGE

INTERPRETIVE PILLARS

EXISTING PARKING

PICNIC SHELTER

BERM

INTERPRETIVE PATH WITH TIMELINE

EXISTING RETAINING WALL

EXISTING PARKING

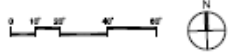
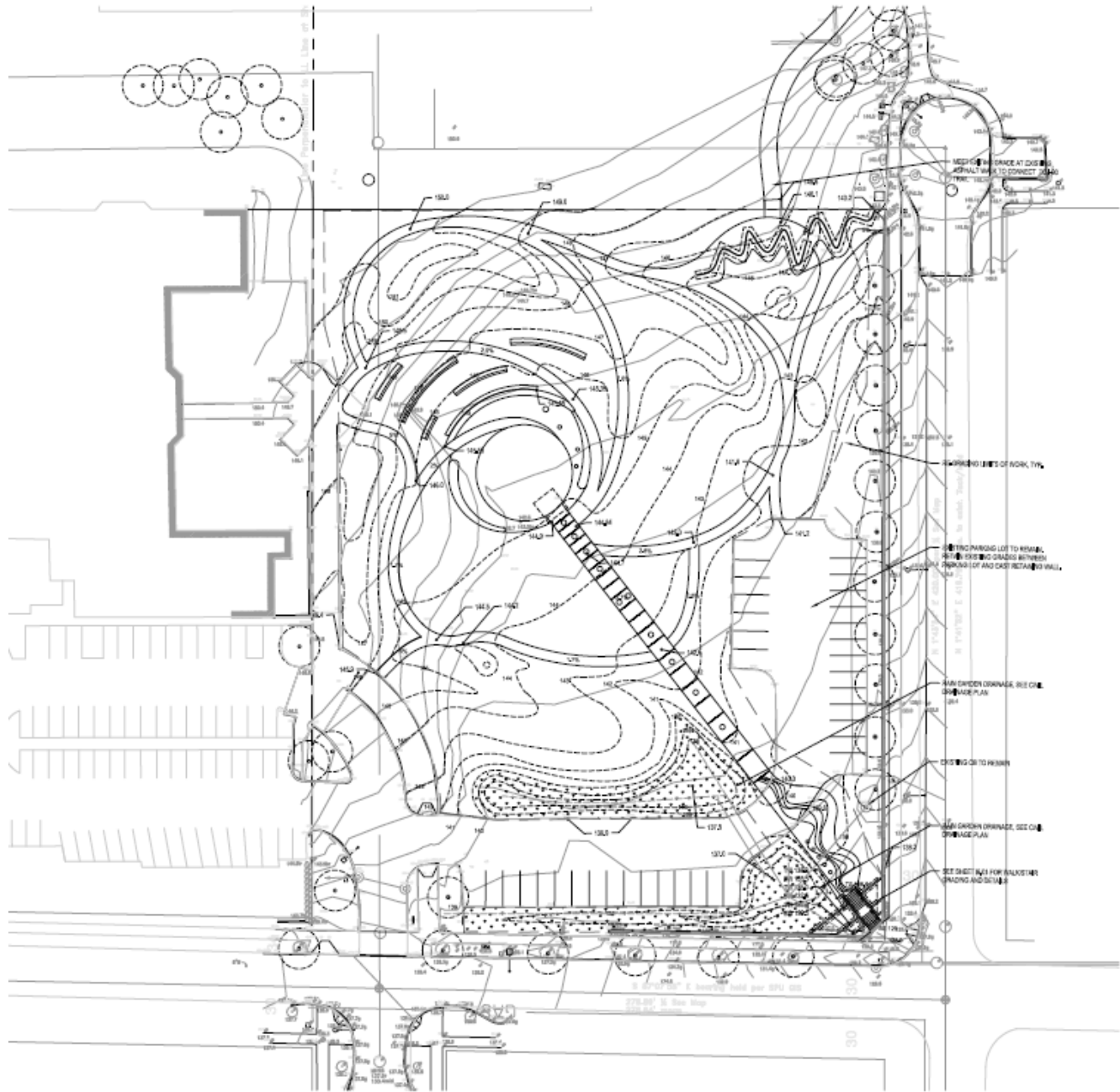
STOOLS

STAIRS

0' 10' 30' 60'

JIMI HENDRIX PARK









Trees

Botanical name: *Acer saccharum*

Common name: Sugar maple

Description:

Large deciduous tree

Red fall color

Full sun

Ability to withstand saturated soils

Drought tolerant

Design intent:

Nice shade tree with good fall color



Dense summer canopy



Fall color of the Sugar maple