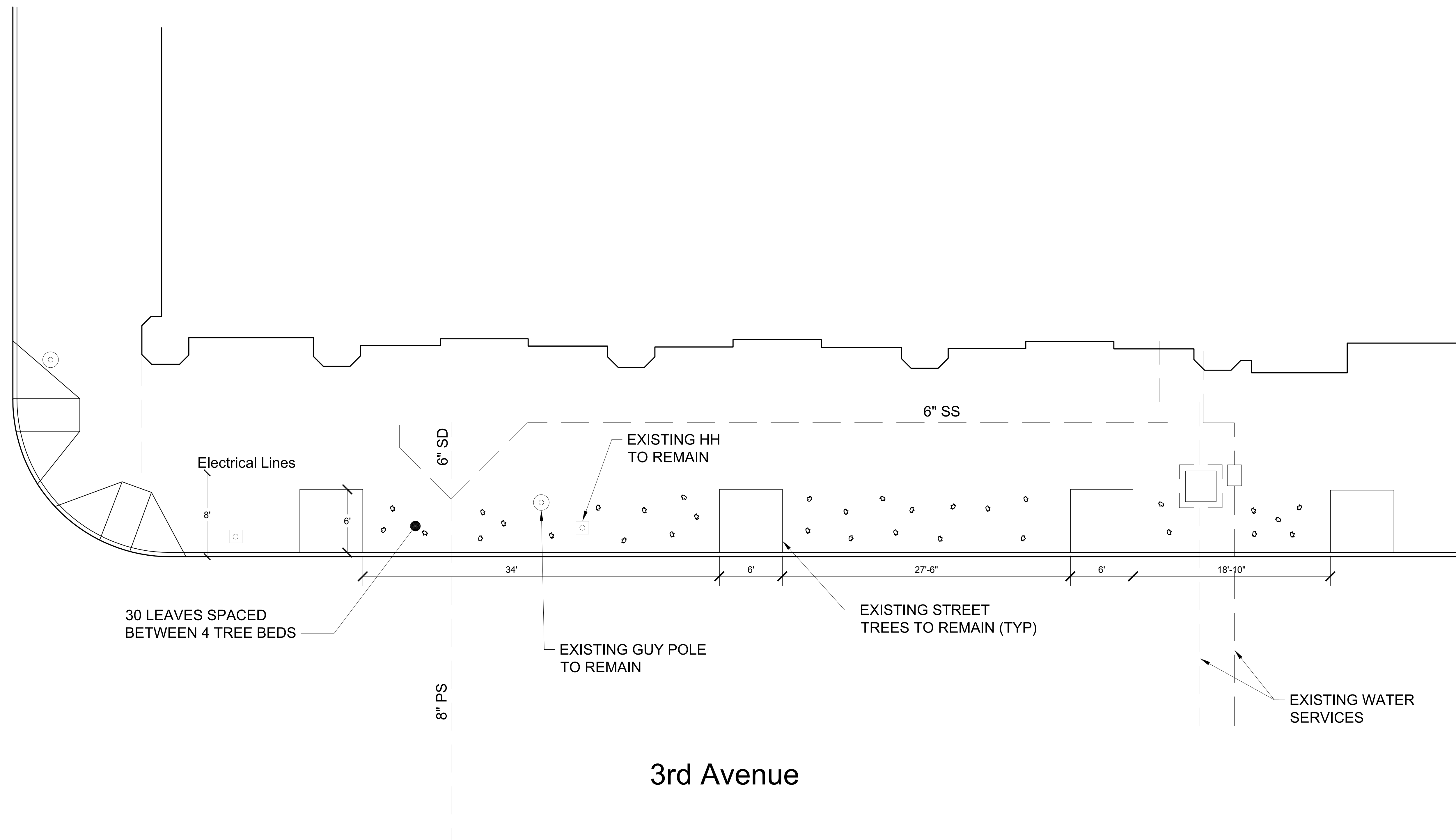
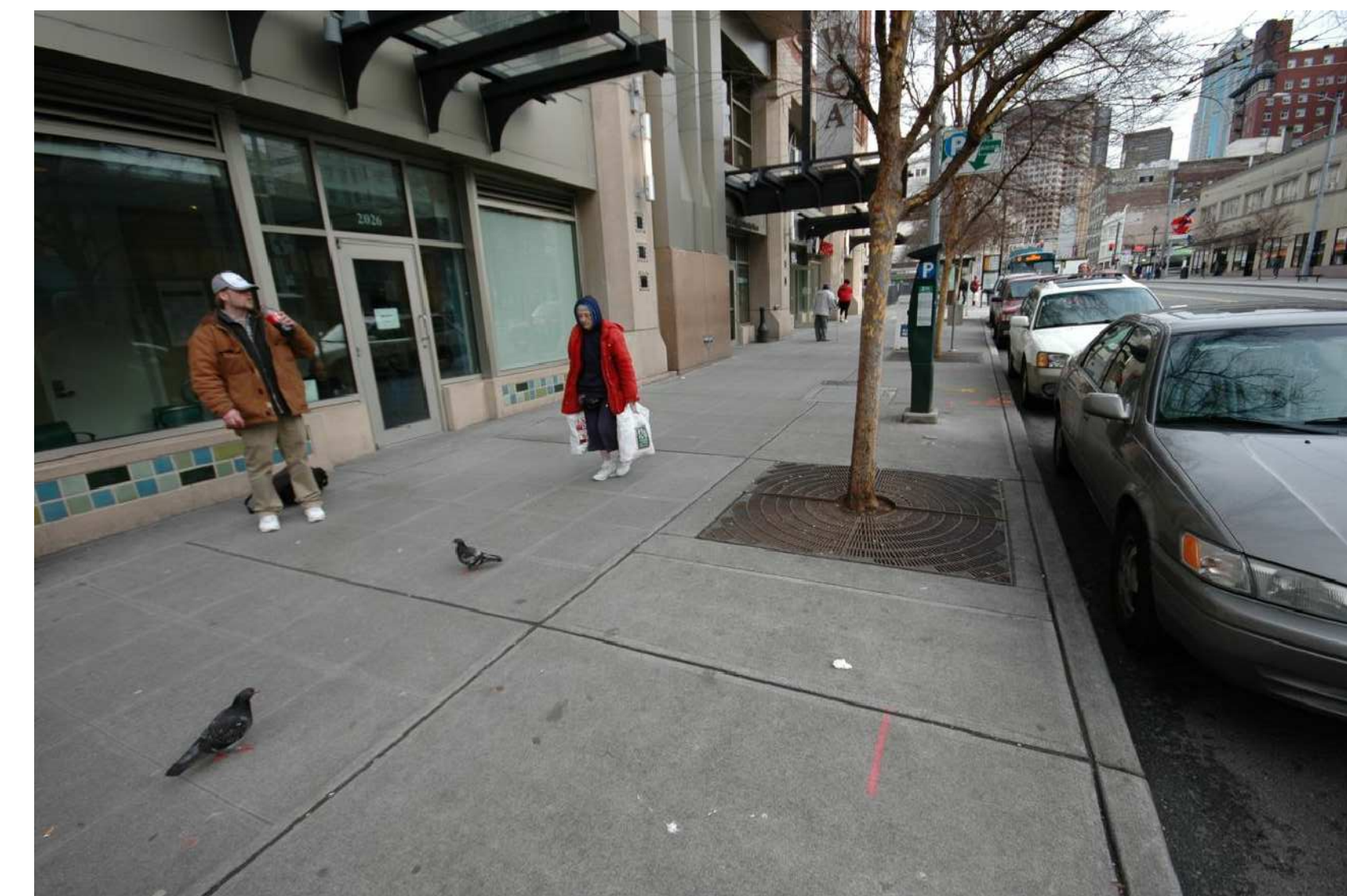
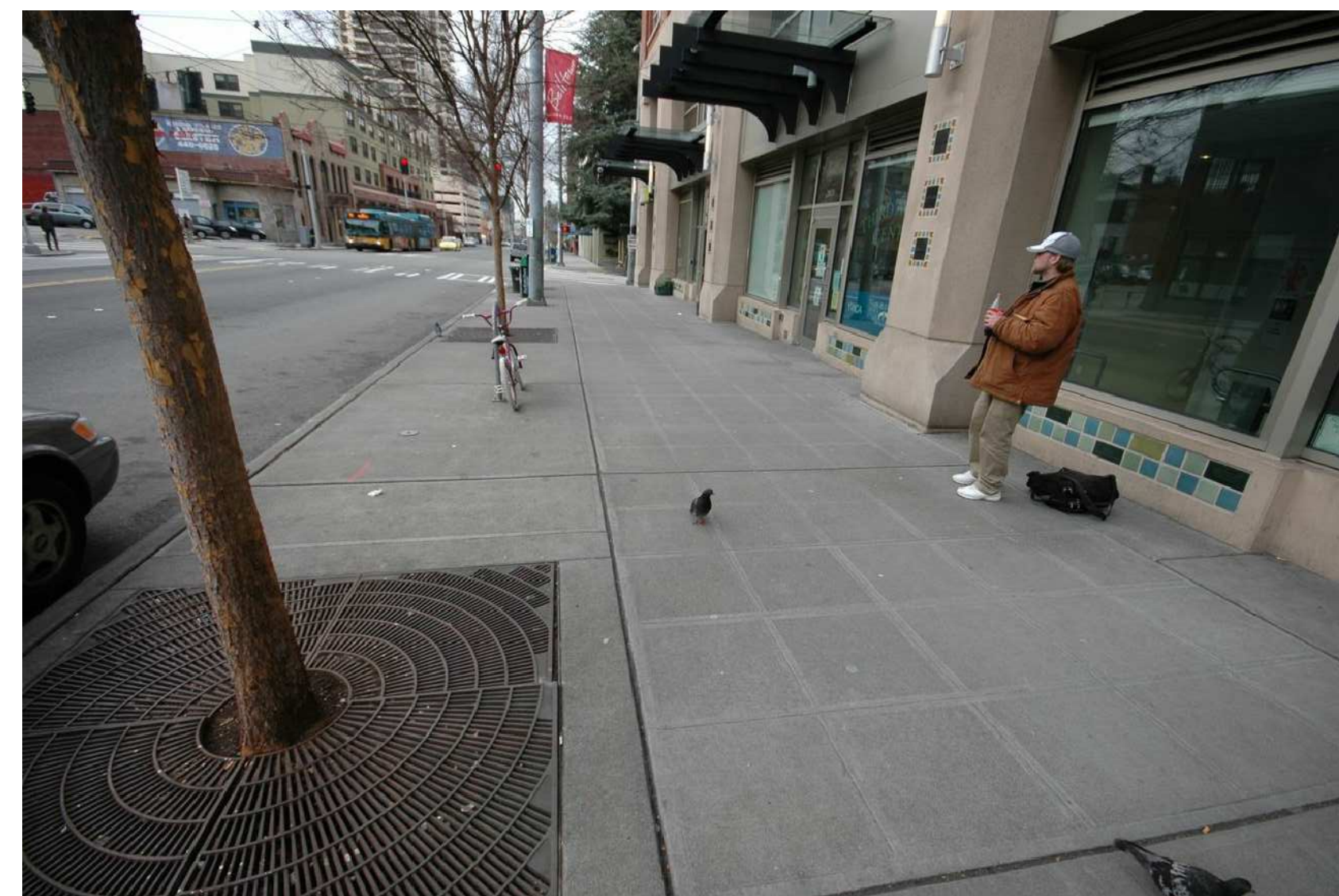
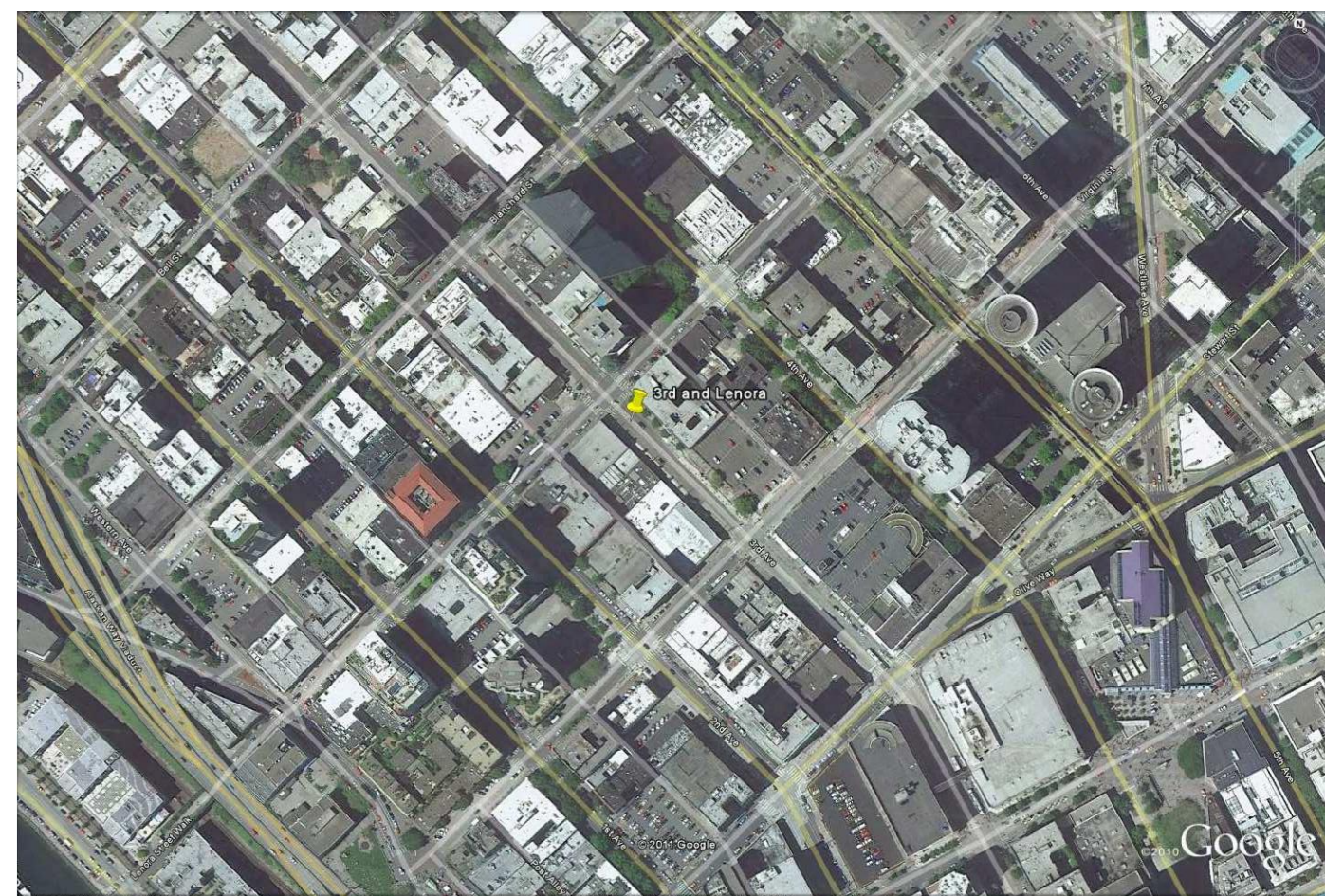


Lenora Street



3rd Avenue

1 3RD AND LENORA STREET SITE
Scale: 3/16" = 1'-0"



PROJECT TEAM:

ARTIST:

Clark Wiegman
1214 NW 121st
Seattle, Washington 98177
Ph: 206.669.6082

ARCHITECT:

KIM LOKAN architecture
3933 Burke Avenue North
Seattle, Washington 98103
Ph: 206.795.7962

LANDSCAPE ARCHITECT:

KAREN Kiest landscape Architects
101 West John Street, Suite 305
Seattle, Washington 98119
Ph: 206.323.6032

3		
2		
1		
NO.	REVISION	DATE

REVIEWED:	PARK ENGINEER	DATE
-----------	---------------	------

All work done in accordance with the City of Seattle Standard Plans and Specifications in effect on the date shown above, and supplemented by Special Provisions.



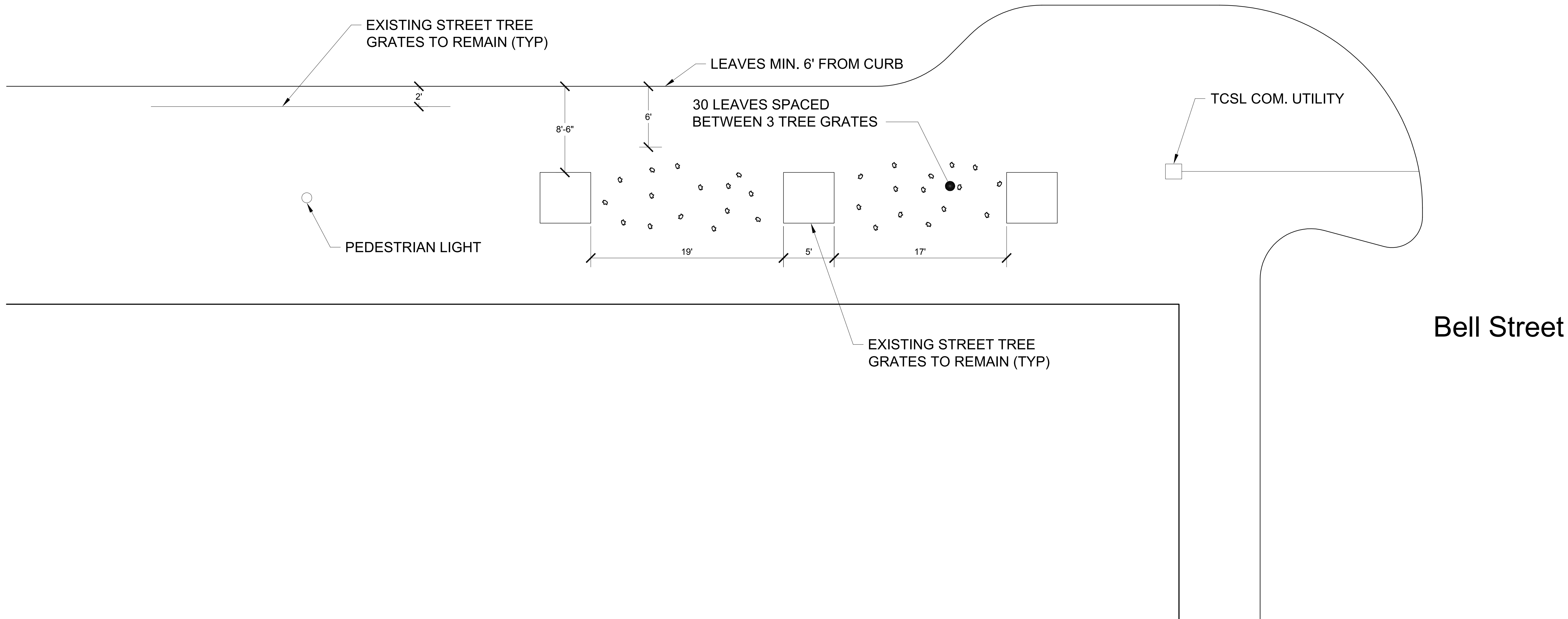
Angeline's & YMCA Opportunity Place (3rd & Lenora)

SIDEWALK LEAVES

SITE PLAN

DESIGNED	Clark Wiegman	DATE	3-30-2011
DRAWN	John Stout	SHEET	1 OF 5
CHECKED			
ORDINANCE NO.			P1.0
CONTRACT NO.			
SCALE			

2nd Avenue



PROJECT TEAM:

ARTIST:
 Clark Wiegman
 1214 NW 121st
 Seattle, Washington 98177
 Ph: 206.669.6082

ARCHITECT:
 KIM LOKAN architecture
 3933 Burke Avenue North
 Seattle, Washington 98103
 Ph: 206.795.7962

LANDSCAPE ARCHITECT:
 KAREN Kiest landscape Architects
 101 West John Street, Suite 305
 Seattle, Washington 98119
 Ph: 206.323.6032

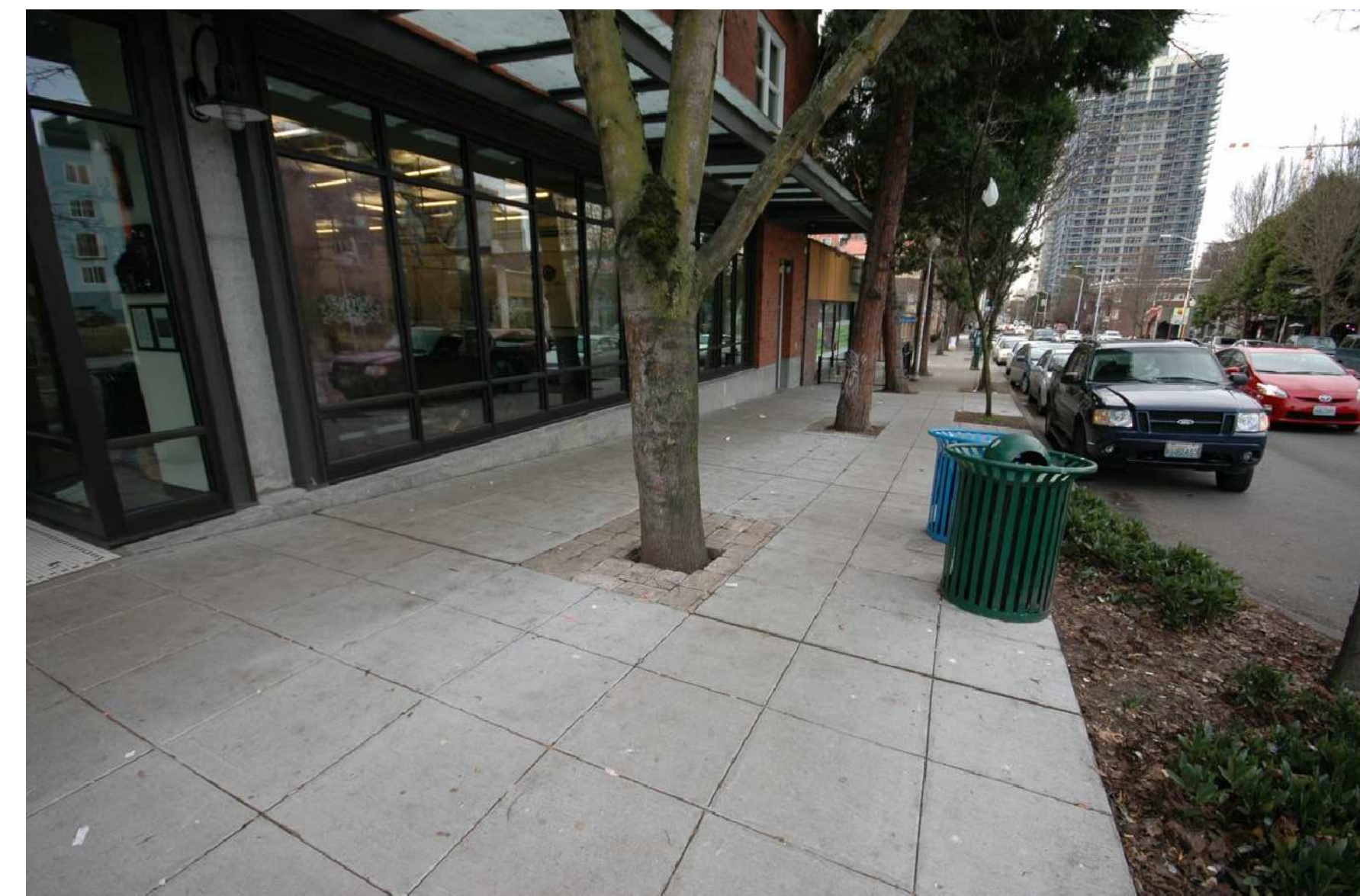
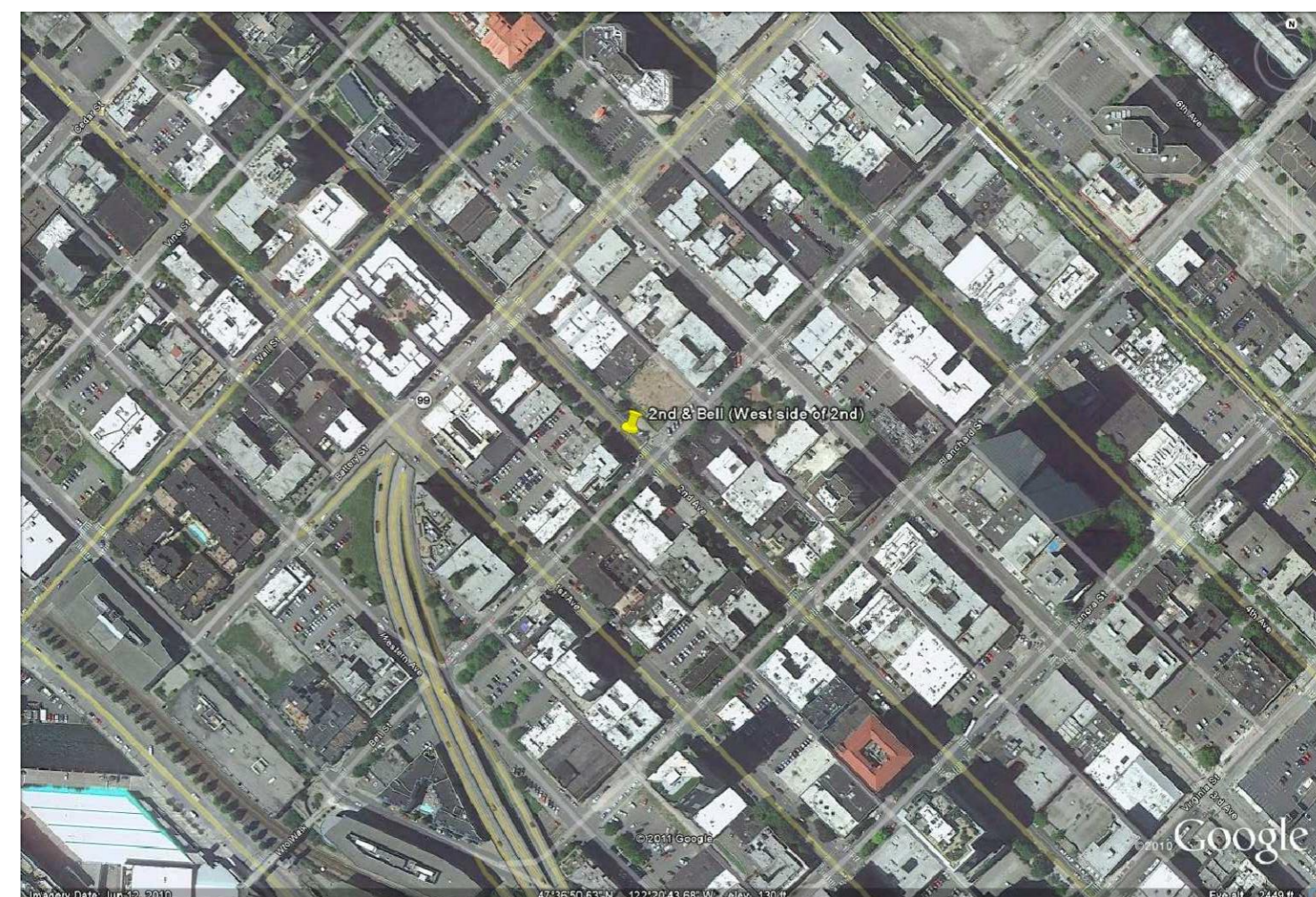
3		
2		
1		
NO.	REVISION	AS BUILT
		DATE

REVIEWED: _____
 PARK ENGINEER _____ DATE _____

All work done in accordance with the City of Seattle Standard Plans and Specifications in effect on the date shown above, and supplemented by Special Provisions.

1 2ND AND BELL STREET SITE

Scale: 3/16" = 1'-0"



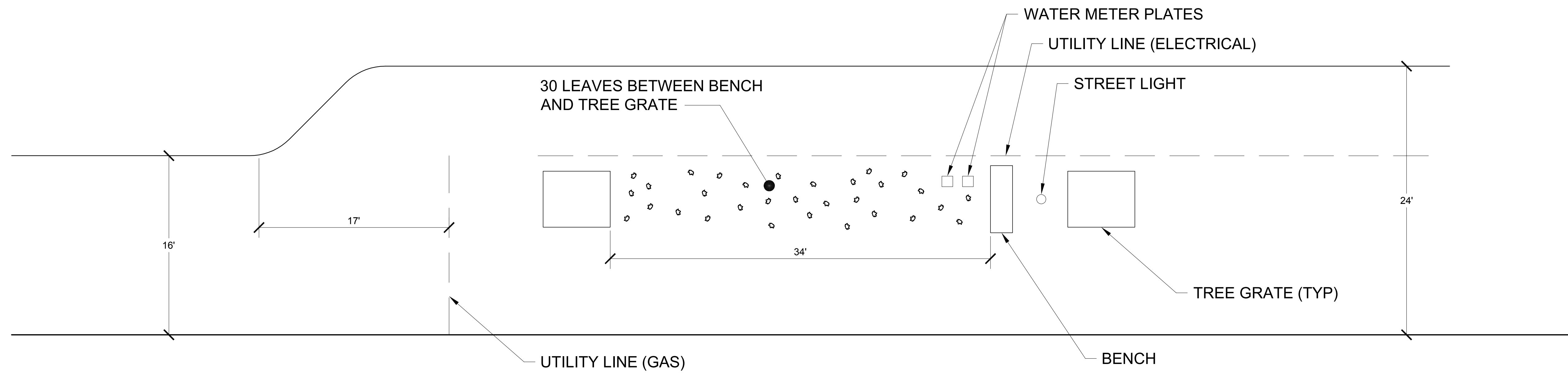
Noel House (2nd & Bell)

SIDEWALK LEAVES

SITE PLAN

DESIGNED	Clark Wiegman	DATE	3-30-2011
DRAWN	John Stout	SHEET	2 OF 5
CHECKED			
ORDINANCE NO.			P2.0
CONTRACT NO.			
SCALE			

3rd Avenue



PROJECT TEAM:

ARTIST:

Clark Wiegman
1214 NW 121st
Seattle, Washington 98177
Ph: 206.669.6082

ARCHITECT:

KIM LOKAN architecture
3933 Burke Avenue North
Seattle, Washington 98103
Ph: 206.795.7962

LANDSCAPE ARCHITECT:

KAREN KIEST landscape Architects
101 West John Street, Suite 305
Seattle, Washington 98119
Ph: 206.323.6032

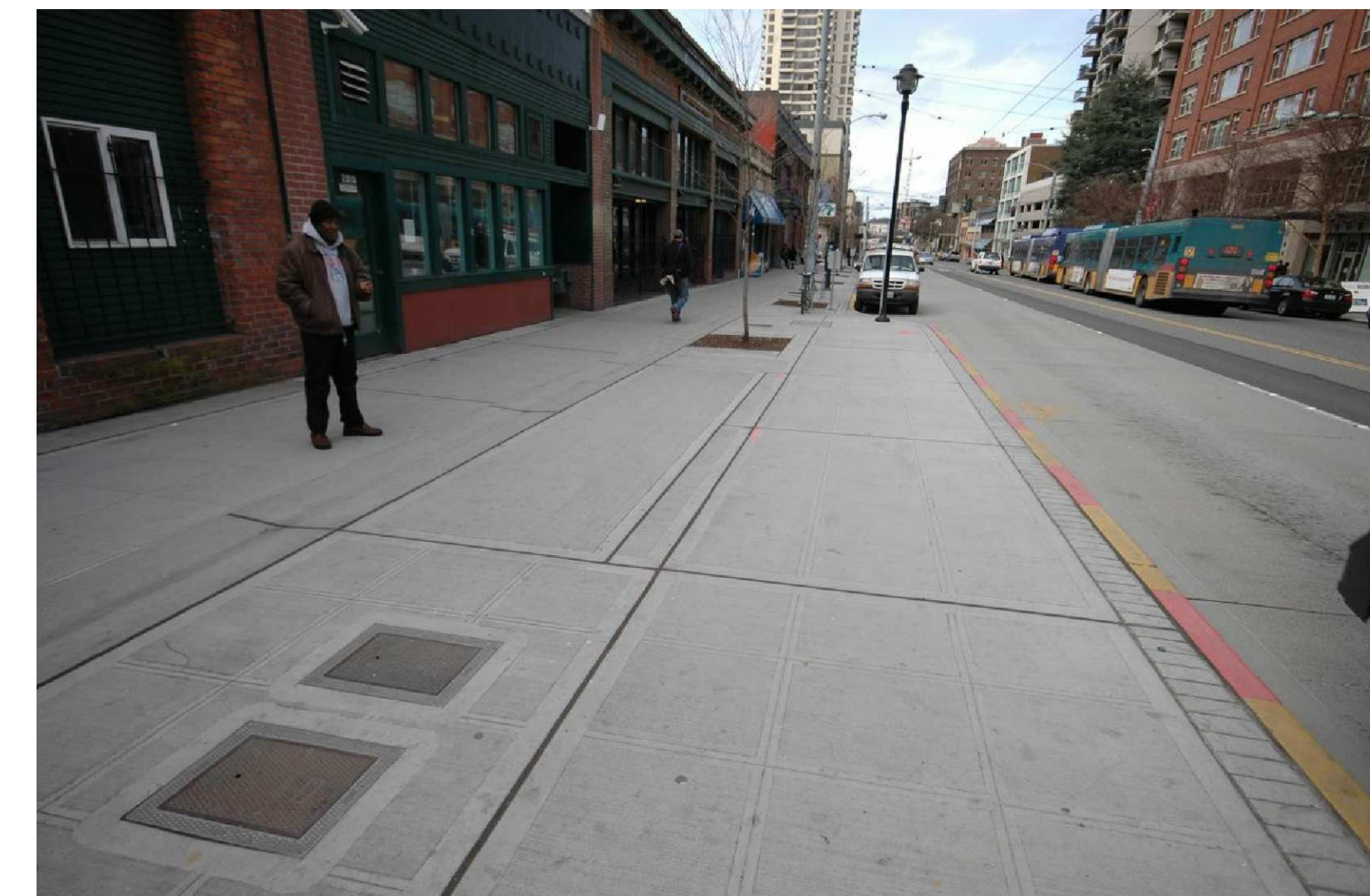
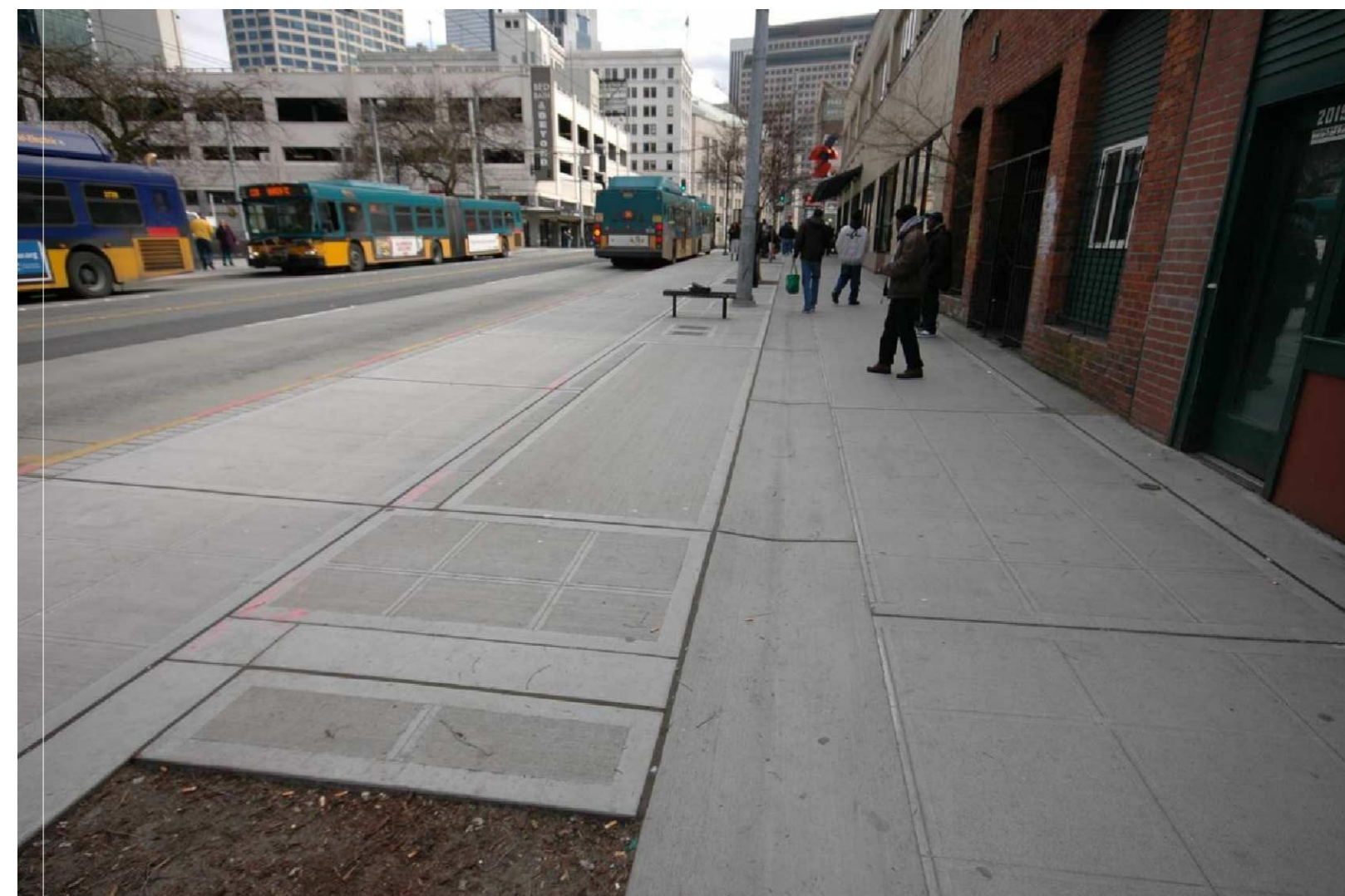
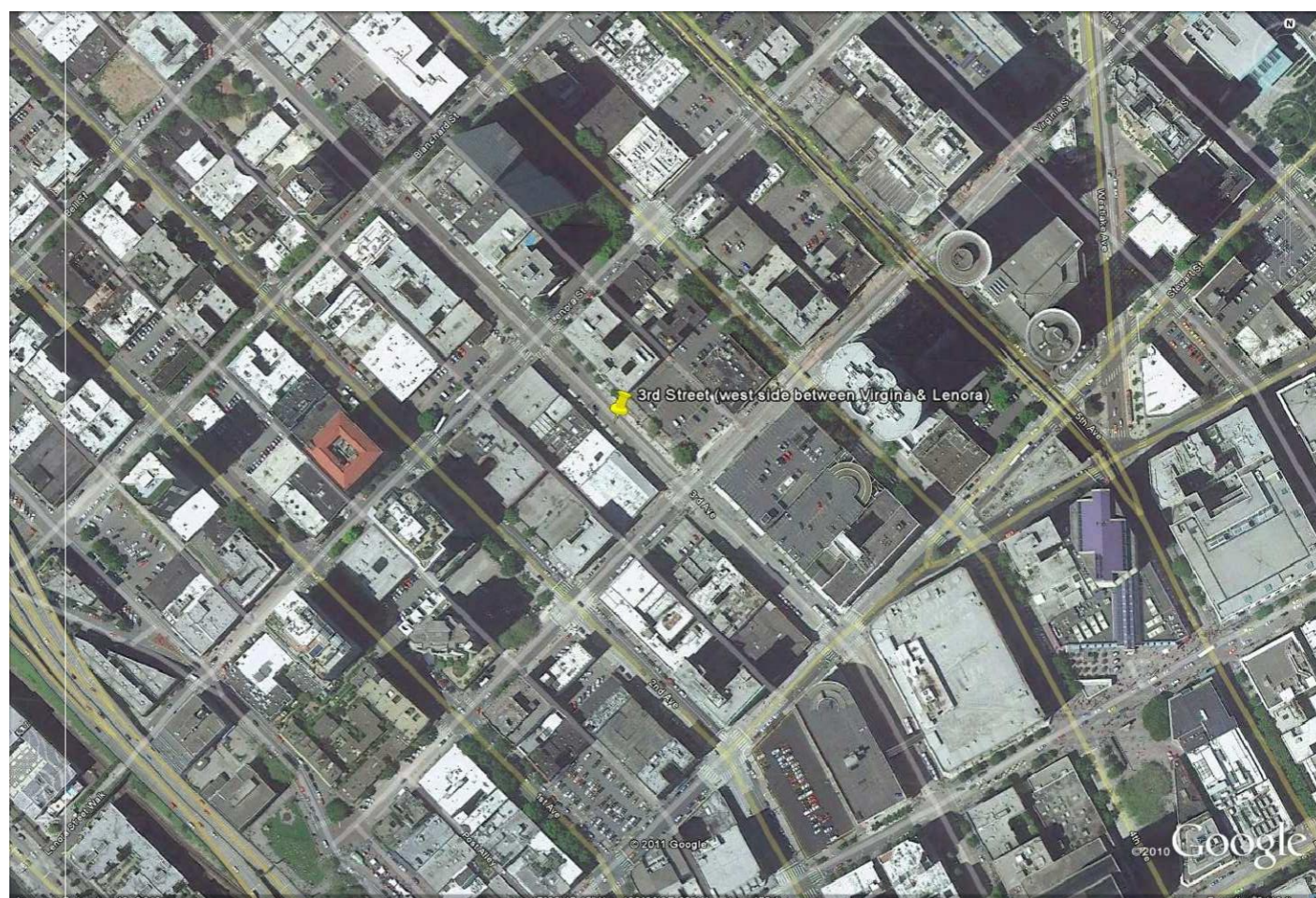
3		
2		
1		
NO.	REVISION	AS BUILT
		DATE

REVIEWED:	PARK ENGINEER	DATE
-----------	---------------	------

All work done in accordance with the City of Seattle Standard Plans and Specifications in effect on the date shown above, and supplemented by Special Provisions.

1 3RD AVENUE SITE

Scale: 3/16" = 1'-0"



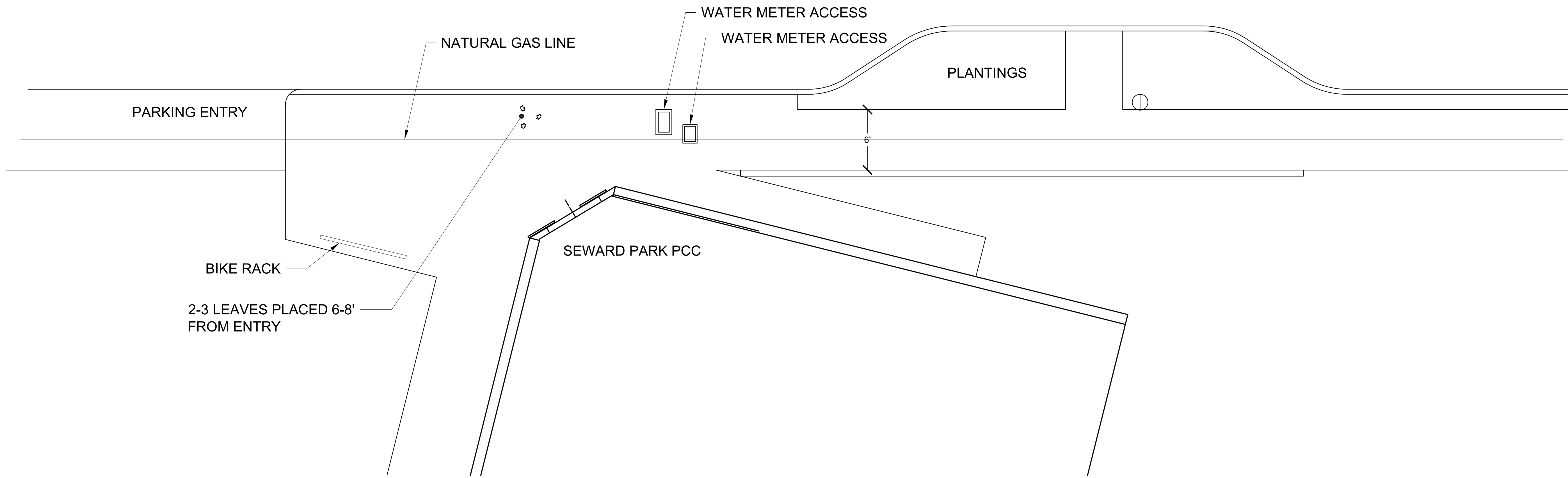
Compass Housing Alliance Family and Adult Service Center (3rd Ave)

SIDEWALK LEAVES

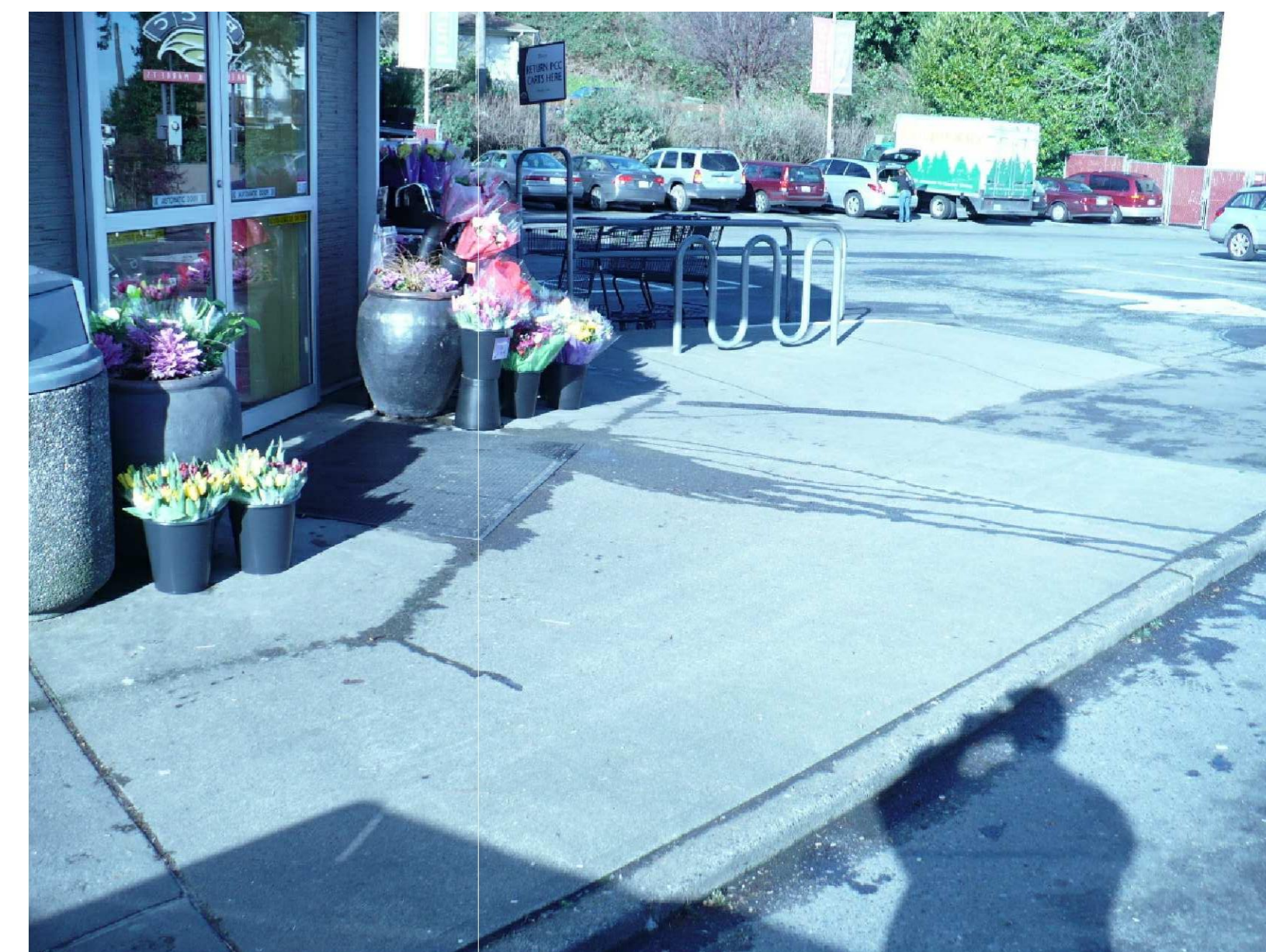
SITE PLAN

DESIGNED	Clark Wiegman	DATE	3-30-2011
DRAWN	John Stout	SHEET	3 OF 5
CHECKED			
ORDINANCE NO.			P3.0
CONTRACT NO.			
SCALE			

Wilson Avenue South



1 SEWARD PARK PCC SITE
Scale: 3/16" = 1'-0"



PROJECT TEAM:

ARTIST:

Clark Wiegman
1214 NW 121st
Seattle, Washington 98177
Ph: 206.669.6082

ARCHITECT:

KIM LOKAN architecture
3933 Burke Avenue North
Seattle, Washington 98103
Ph: 206.795.7962

LANDSCAPE ARCHITECT:

KAREN Kiest landscape Architects
101 West John Street, Suite 305
Seattle, Washington 98119
Ph: 206.323.6032

3		
2		
1		
NO.	REVISION	DATE

REVIEWED:	PARK ENGINEER	DATE
-----------	---------------	------

All work done in accordance with the City of Seattle Standard Plans and Specifications in effect on the date shown above, and supplemented by Special Provisions.

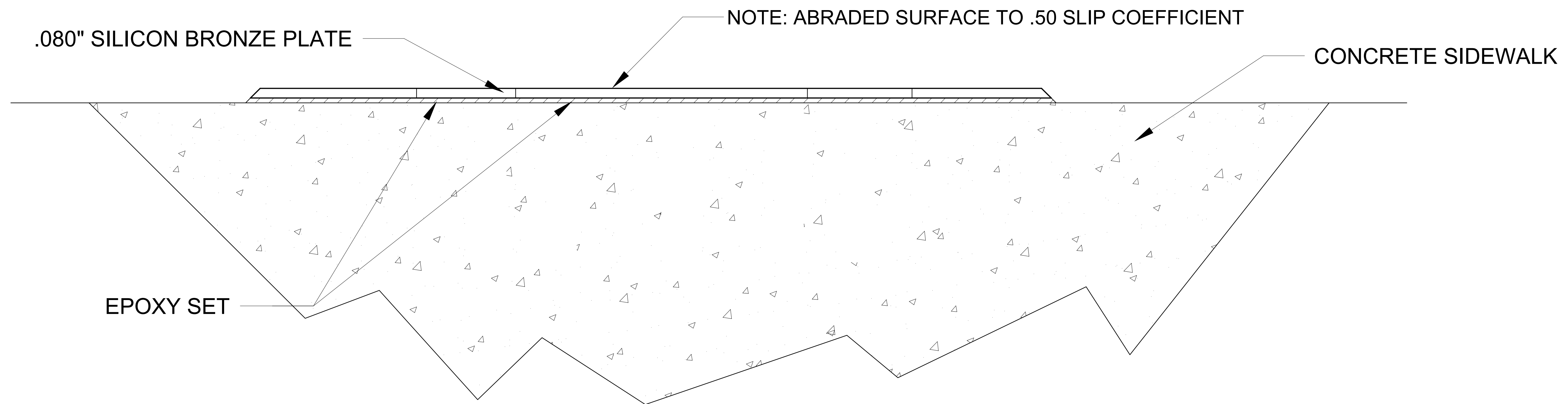
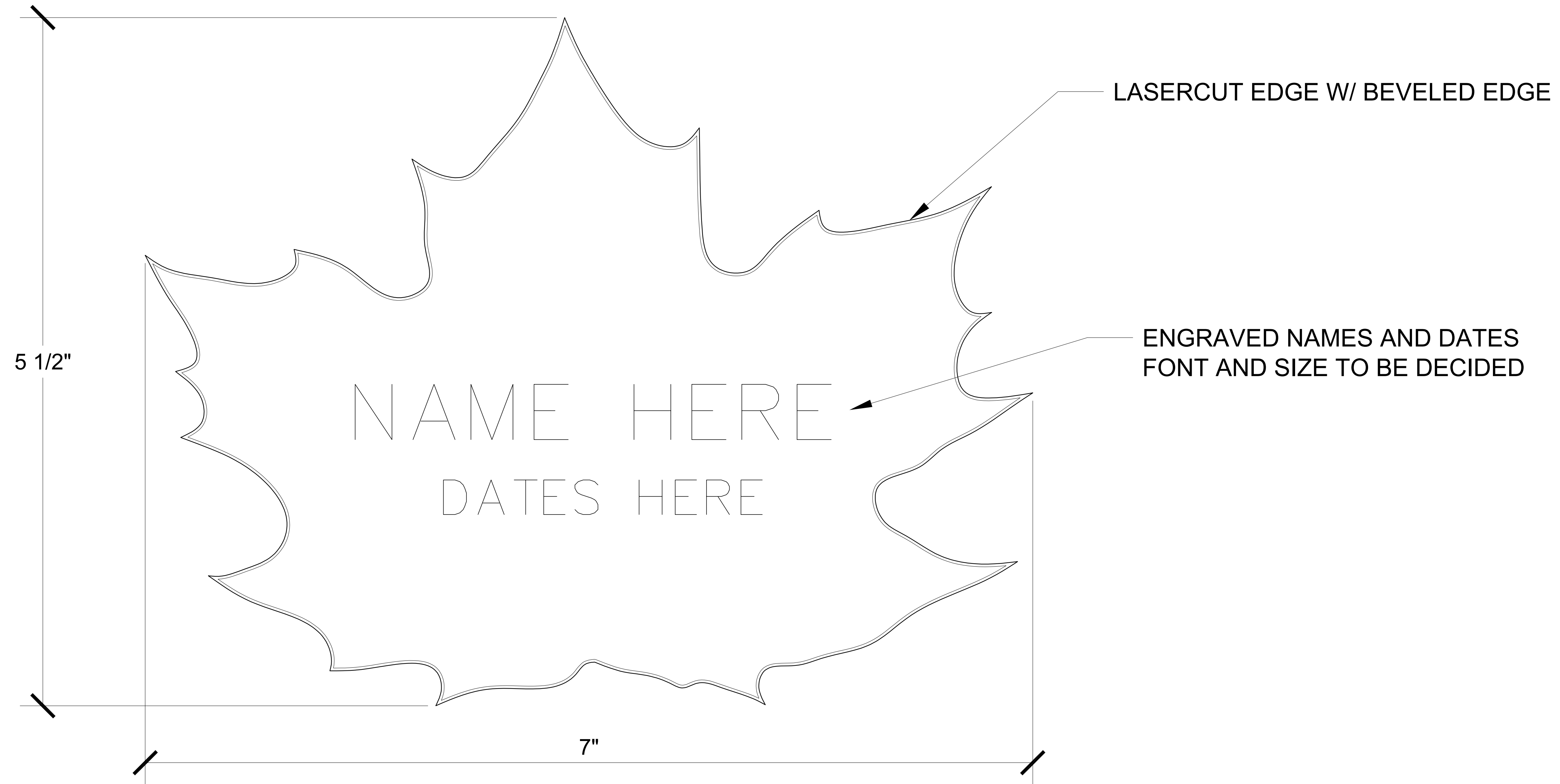


**Seward Park PCC
(Wilson Avenue South)**

SIDEWALK LEAVES

SITE PLAN

DESIGNED	Clark Wiegman	DATE	3-30-2011
DRAWN	John Stout	SHEET	4 OF 5
CHECKED			
ORDINANCE NO.		P4.0	
CONTRACT NO.			
SCALE			



PROJECT TEAM:

ARTIST:

Clark Wiegman
1214 NW 121st
Seattle, Washington 98177
Ph: 206.669.6082

ARCHITECT:

KIM LOKAN architecture
3933 Burke Avenue North
Seattle, Washington 98103
Ph: 206.795.7962

LANDSCAPE ARCHITECT:

KAREN KIEST landscape Architects
101 West John Street, Suite 305
Seattle, Washington 98119
Ph: 206.323.6032

3		
2		
1		
NO.	REVISION	DATE

REVIEWED:	PARK ENGINEER	DATE
-----------	---------------	------

All work done in accordance with the City of Seattle Standard Plans and Specifications in effect on the date shown above, and supplemented by Special Provisions.



SIDEWALK LEAVES

LEAF DETAIL

DESIGNED	Clark Wiegman	DATE	3-30-2011
DRAWN	John Stout	SHEET	5 OF 5
CHECKED			
ORDINANCE NO.		P5.0	
CONTRACT NO.			
SCALE			

1 SIDEWALK LEAF DETAIL AND SECTION

Scale: 2 : 1