

# Grange Insurance Association



Skybridge

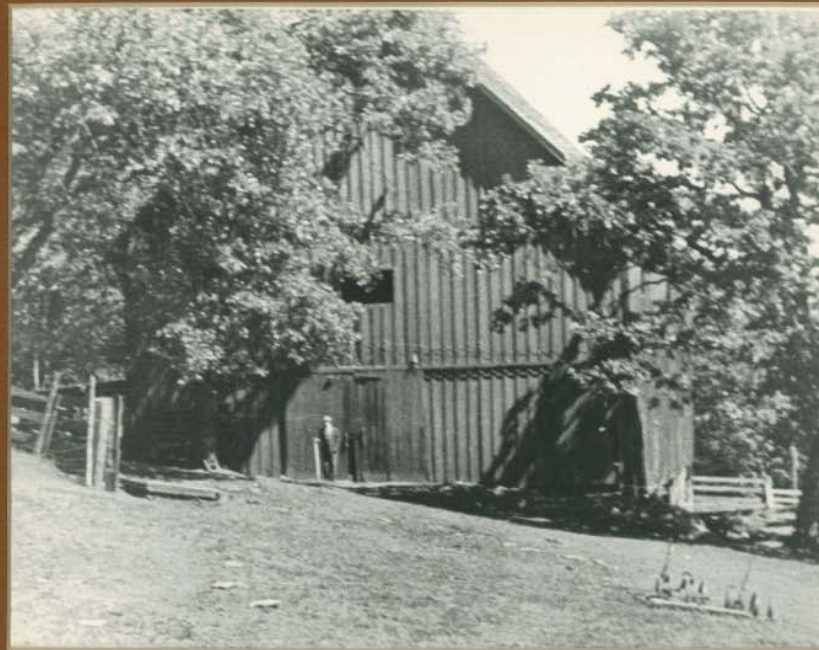
Design Commission Presentation

# GIA Aerial View



# GIA History

- Founded in 1894



# Kulien Building





# Western Avenue 1935



# 3<sup>rd</sup> Avenue Building 1954-1958



# 3<sup>rd</sup> Avenue Building after 1958





# GIA 3<sup>rd</sup> Ave Building 1982

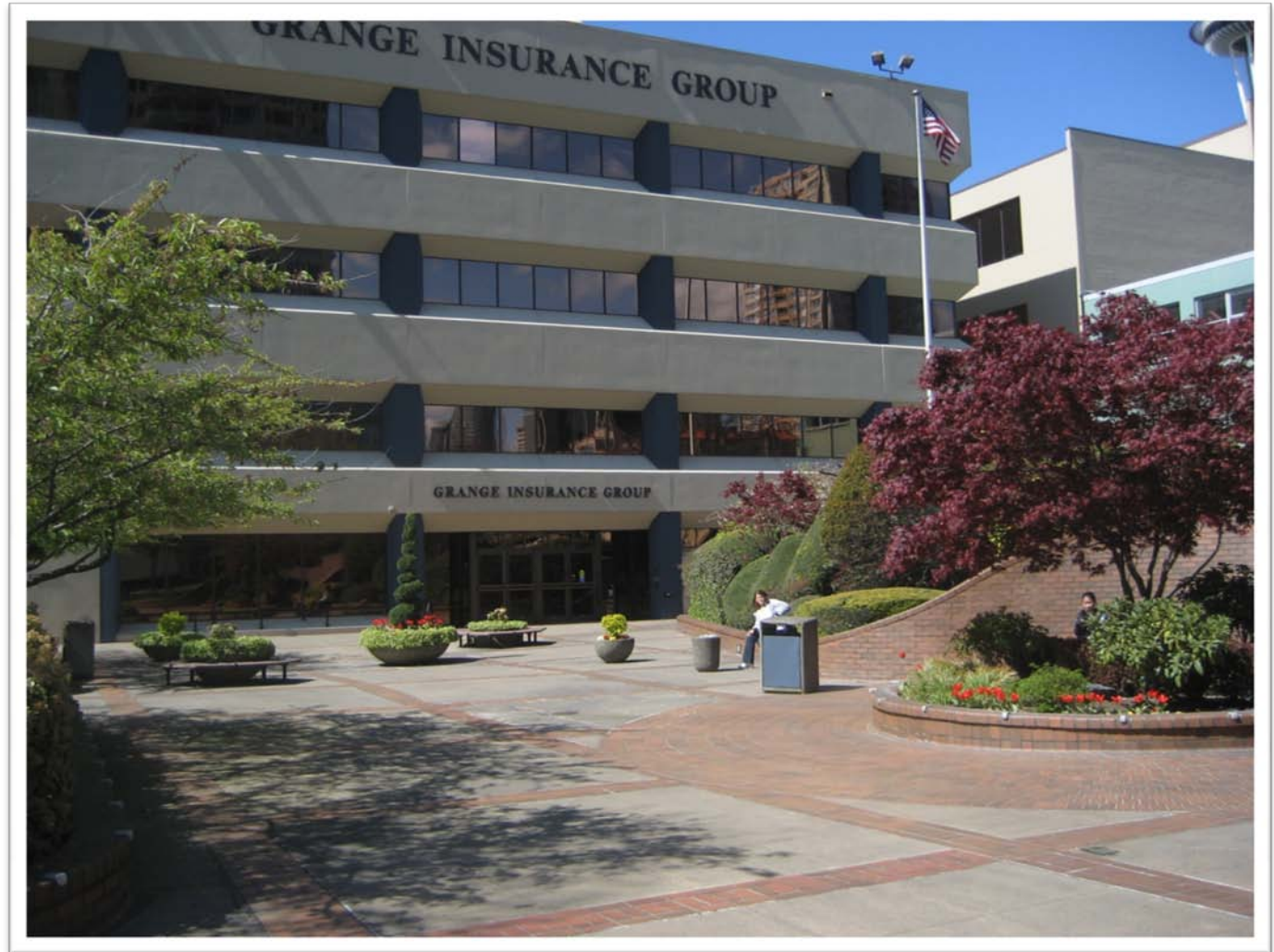




# 2717 3<sup>rd</sup> Avenue Building



# 200 Cedar Street Building



# Skybridge

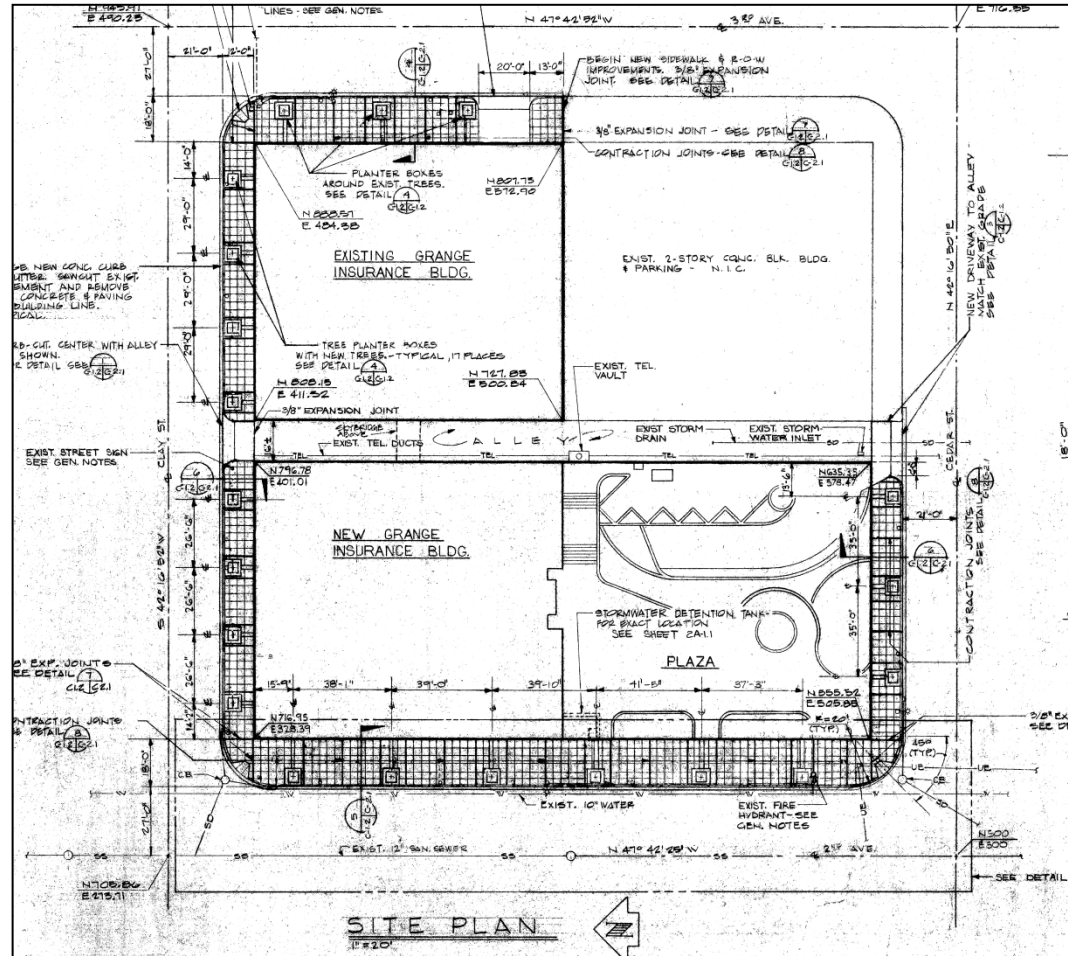


# Skybridge Function

- This skybridge is essential to the efficient operation of company. It allows for communication with all employees and aids the management of employees in two separate buildings.
- The skybridge also contains essential electrical and computer connections between the buildings including various safety alarms such as security, fire, and burglary.
- Most importantly, the skybridge provides employees a safe way to travel from building to building.
- Allows for safer vehicle travel through the alley reducing the potential for vehicle pedestrian accidents.
- It should be noted we have never had any problems with the skybridge. Vehicle traffic, fire, garbage, delivery trucks, and passenger vehicles pass through the alley without obstruction.
- The end of the alley coincides with the edge of our buildings.



# GIA Site Plan





# Plaza Size and Description

- The plaza area is approximately 7,575 sqft.
- The landscaping is mature with beautiful flowering cherries, fragrant Japanese Skimma, Rhododendrons, Japanese maples and more.
- There is a small curved lawn that serves as a nice place to sit in the summer.
- The plaza is professionally maintained along with the sidewalks surrounding the property.
- Colorful annuals are changed out with the seasons.

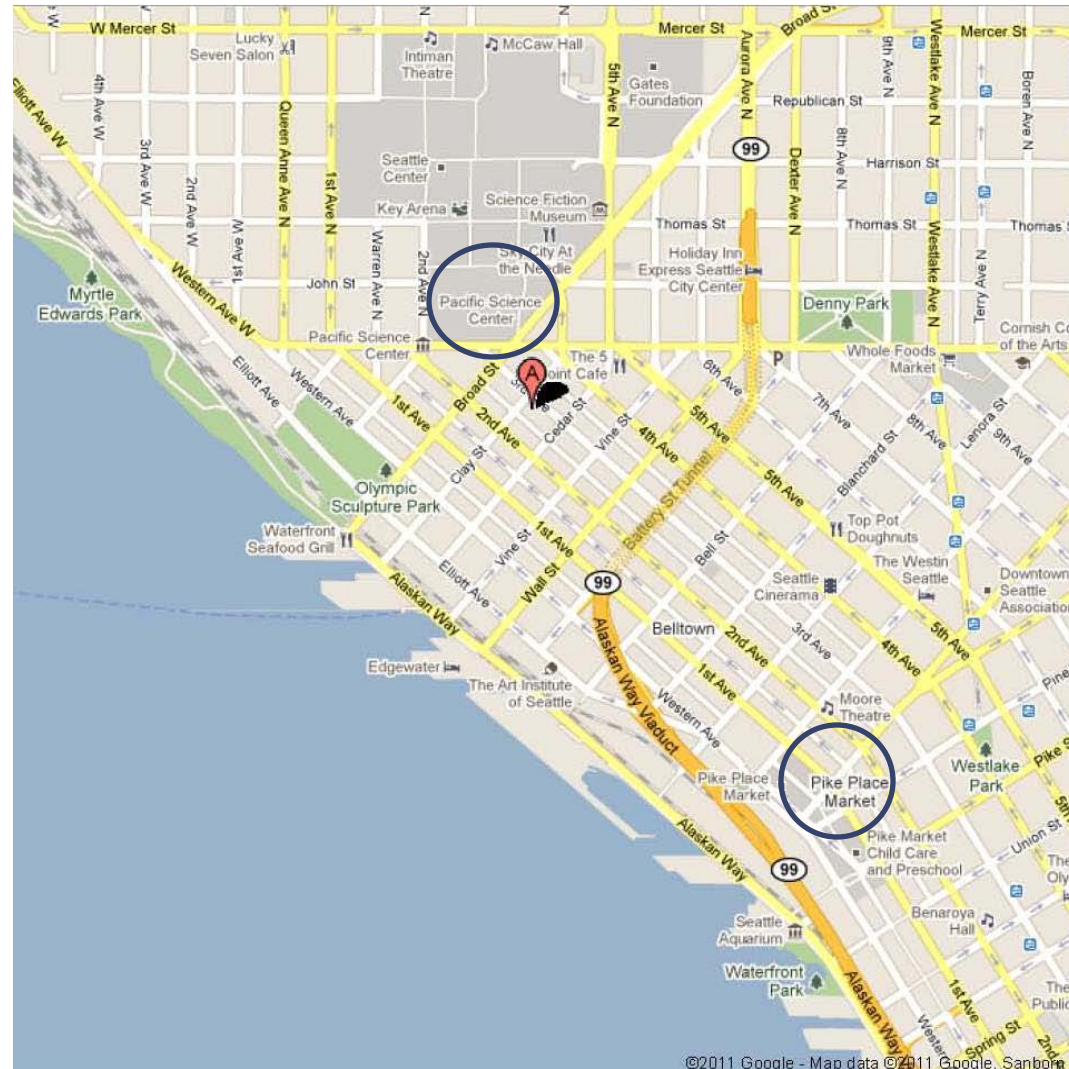


# Trees in bloom





# Proximity to Tourist Attractions



# Spring





# Cherry Trees

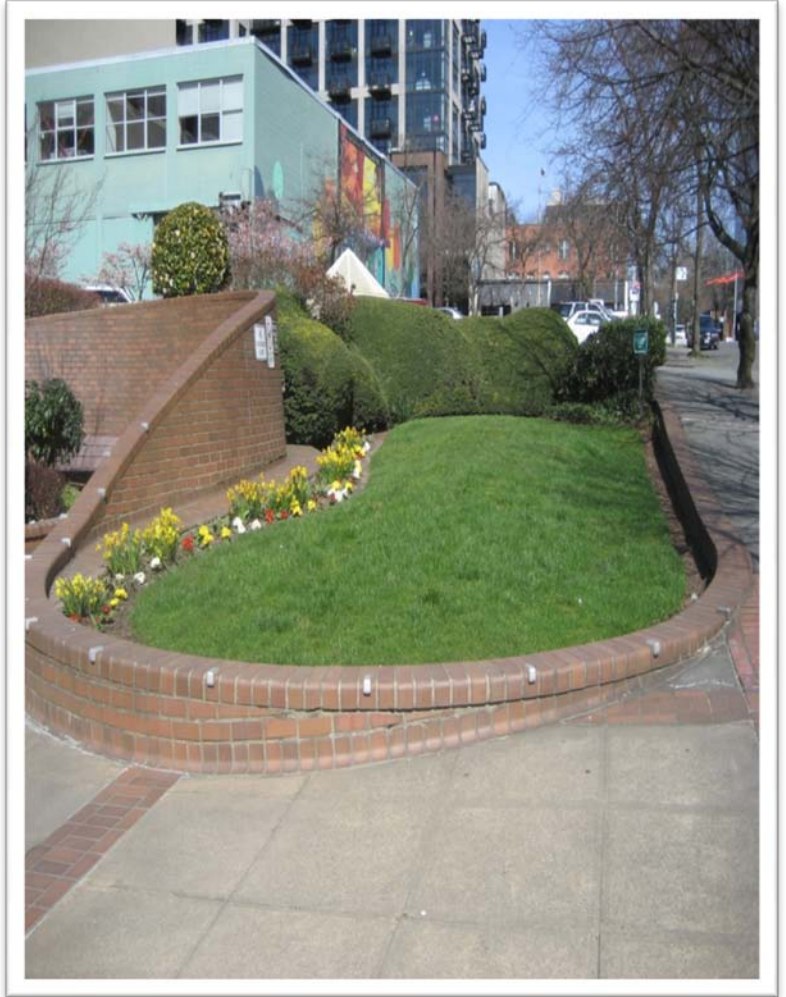


# The Plaza

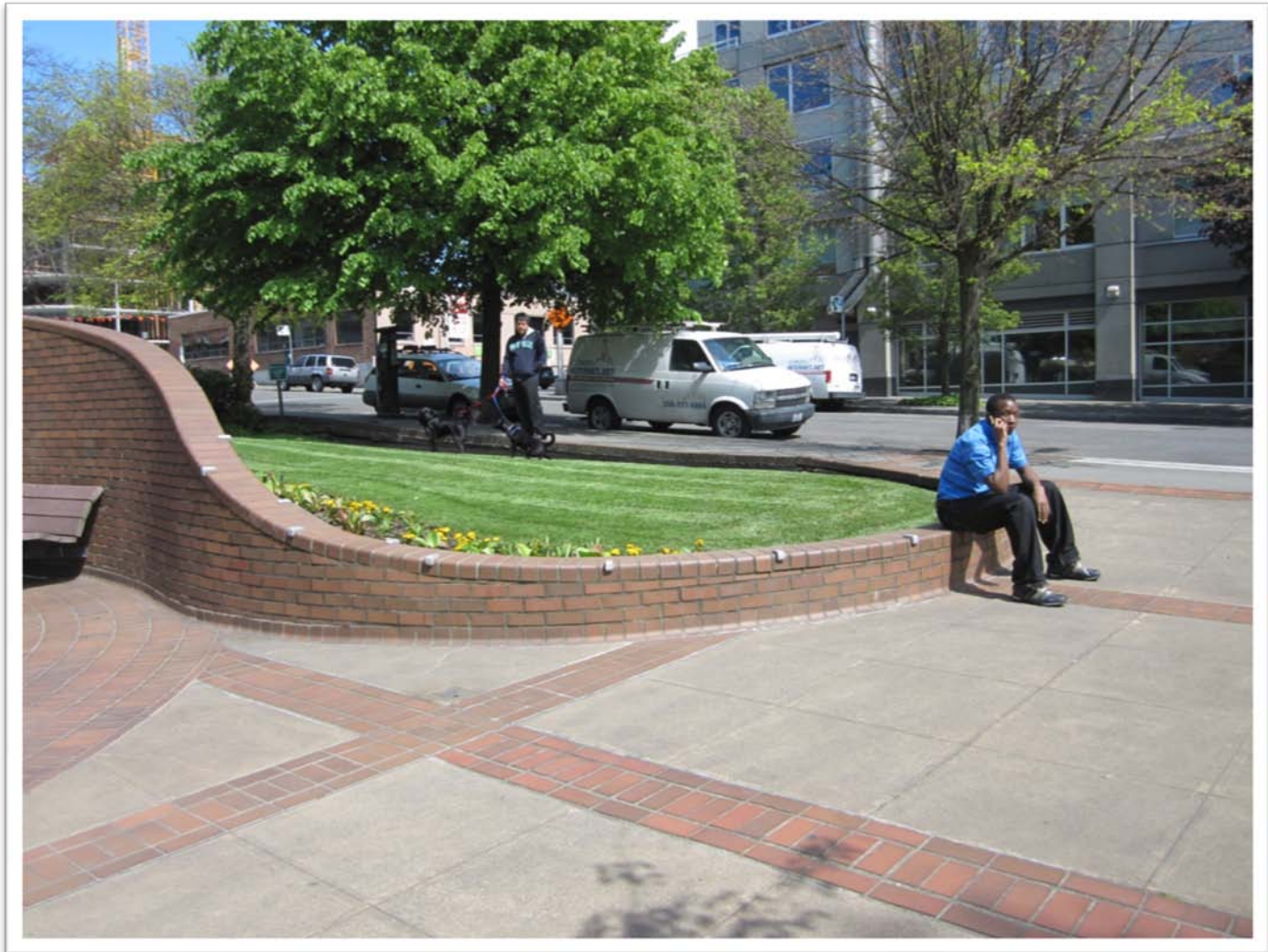




# The Plaza



# Public Visitors





# Tree Lined Sidewalks

- Trees along Clay and 2<sup>nd</sup> Avenue





# Security

- We provide lighting and cameras in the alley.
- Lighting on the roof of our building into the plaza area and small lighting along the steps and plaza brick wall.
- Morning Security guard and night patrols.
- These efforts are a benefit to GIA and are an ancillary benefit to the neighbors and pedestrians.

# Lighting in alley



# Lighting on Roof





# Lighting in Plaza



# Security Cameras

- Plaza (1)
- In Alley (3)
- Customer Parking Area (1)

# Camera Angles





# We Are Good Neighbors

People have been using the Plaza for 30 years

- Public use of plaza
- Security
- Cameras
- Lighting for Safety
- Maintained, looks nice
- Neighborhood support

# Belltown Business Association

## Members

- The Belltown Association is very involved in developing a vibrant, safe, clean, and an economically viable and attractive community.
- GIA supports the Association and has been a member of the Belltown Business Association since 2001.
- Our membership helps provide the 2011 walking guide.

# Contribute to enhancing Belltown throughout the years

- Belltown Business Association
- Seattle Founders Day Festival 2010
- The Big Climb
- New Horizon's Walk



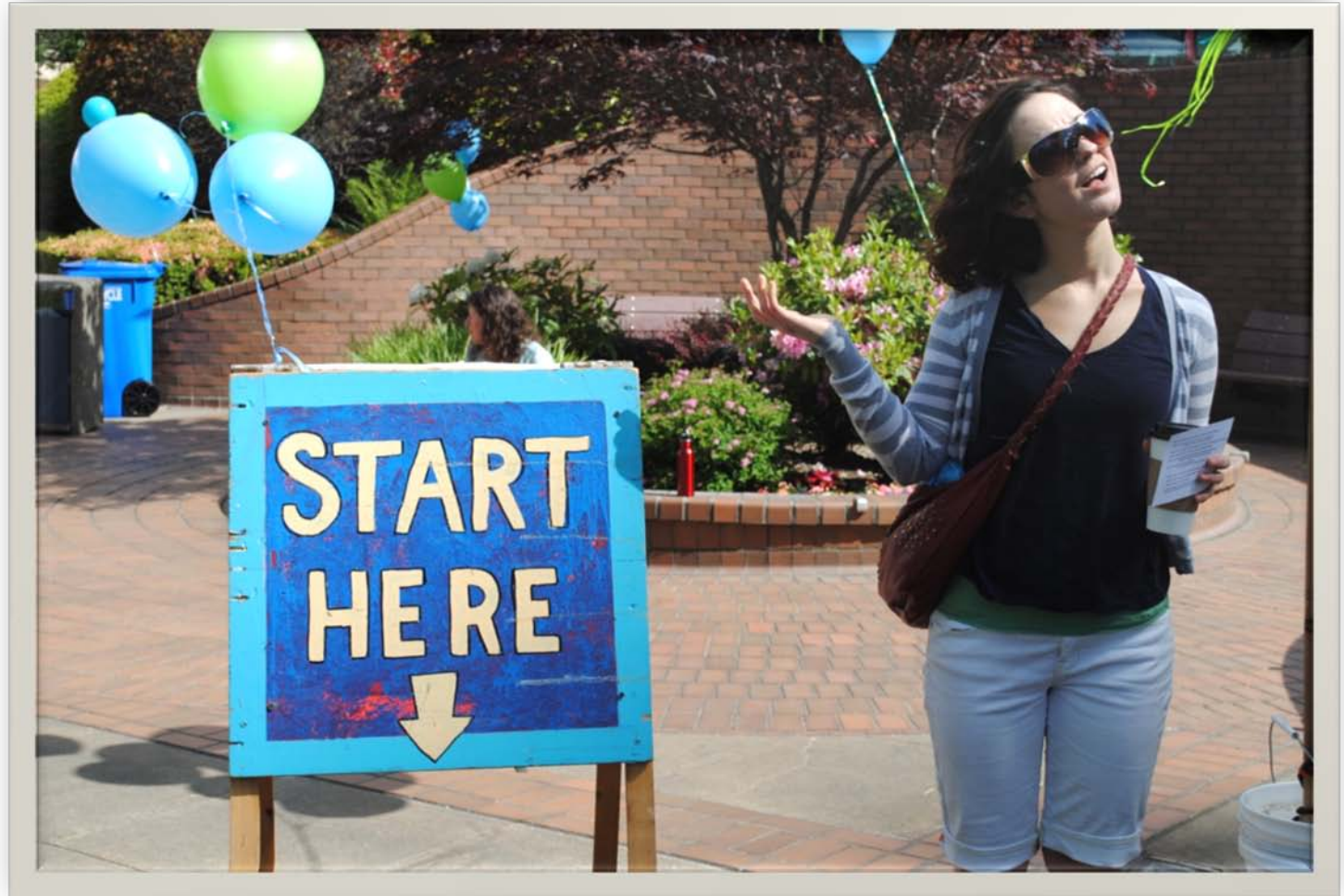


# New Horizon's Ministries

## Fund Raising Walk

- GIA supports our neighbors. New Horizon is directly next door
- Fund Raising Walk Gathering
- Use of Plaza for BBQ
- We even had a GIA team that participated in the event
- We encourage employees to participate in community events to get people out and walking. Susan G. Komen 3-day, The Big Climb, etc.

# Starting Point



# End point New Horizon's Ministries





# New Horizon's Ministries



# Thank You GIA



New Horizons Ministries is a multi-cultural organization whose mission is to be in relationship with homeless and street-involved young people, serving and loving in the way of Jesus, equipping them to leave street life.

This photo was taken by a youth as part of a nine month photojournalism class through our Life Discovery Program.

www.nhmin.org • 206.374.0866 • 1.866.NHM.KIDS

Hi Jennifer,  
Thank you so much for the generous partnership you & Truance Insurance have provided New Horizons for the upcoming WALK fundraiser! The use of the plaza is so helpful in pulling the event off - thank you so much!  
Carina Schubert  
New Horizons Development Mgr.

# Support of Local Businesses

- 200 Employees provide an economic benefit to the city.
- Rite Aid
- Arbor Deli
- Street Bean Coffee
- World Class Coffee
- CJ's Eatery
- Downtown department stores
- And many more...



We try to be good neighbors  
GIA a sponsor at the 1962 World's Fair



# Conclusion

- I 17 years in Washington, 90 years in Belton.
- Skybridge is important to our operation.
- We have been a good neighbor to our Seattle neighbors.
- Our presence has benefited the neighborhood.