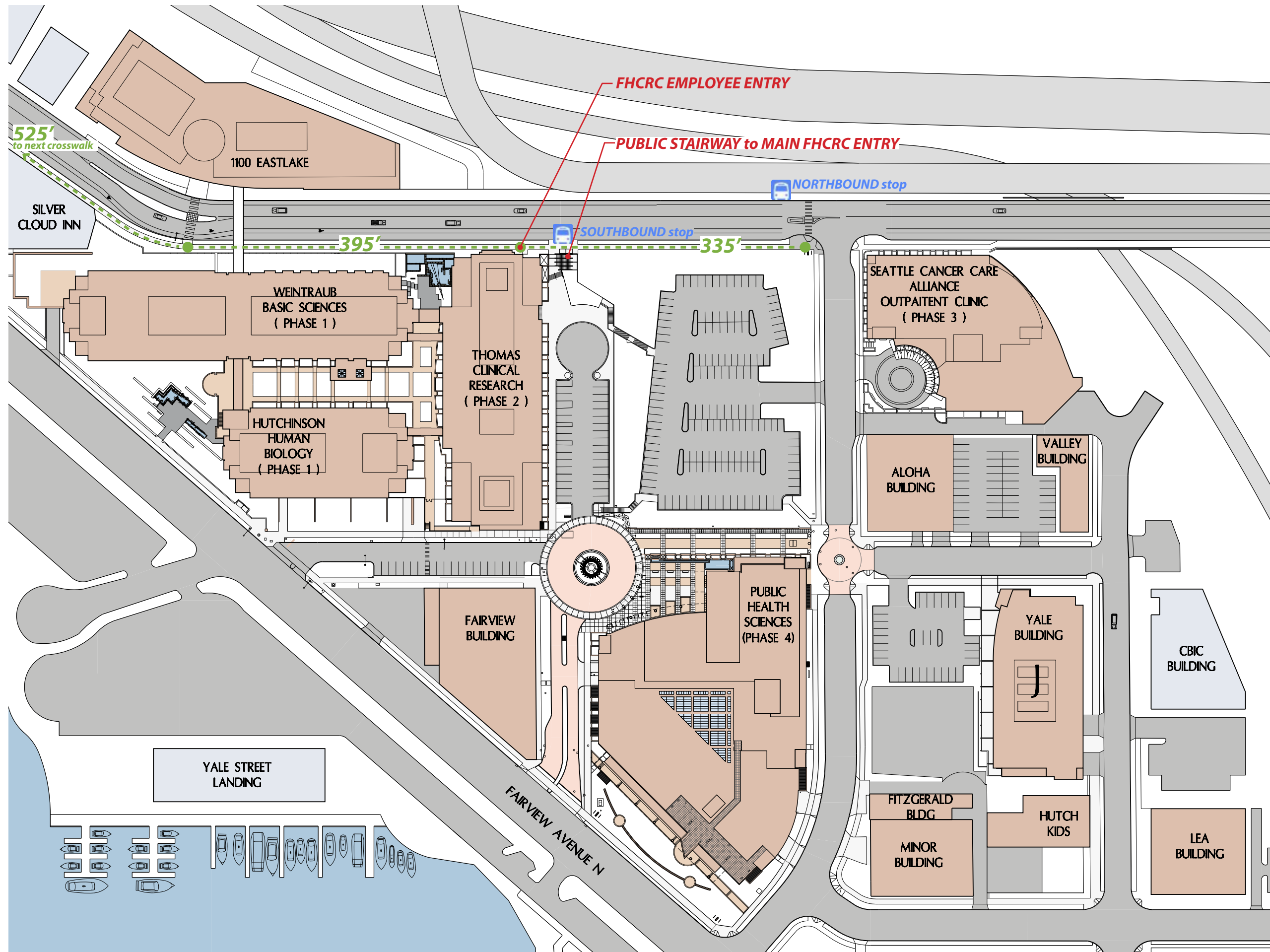


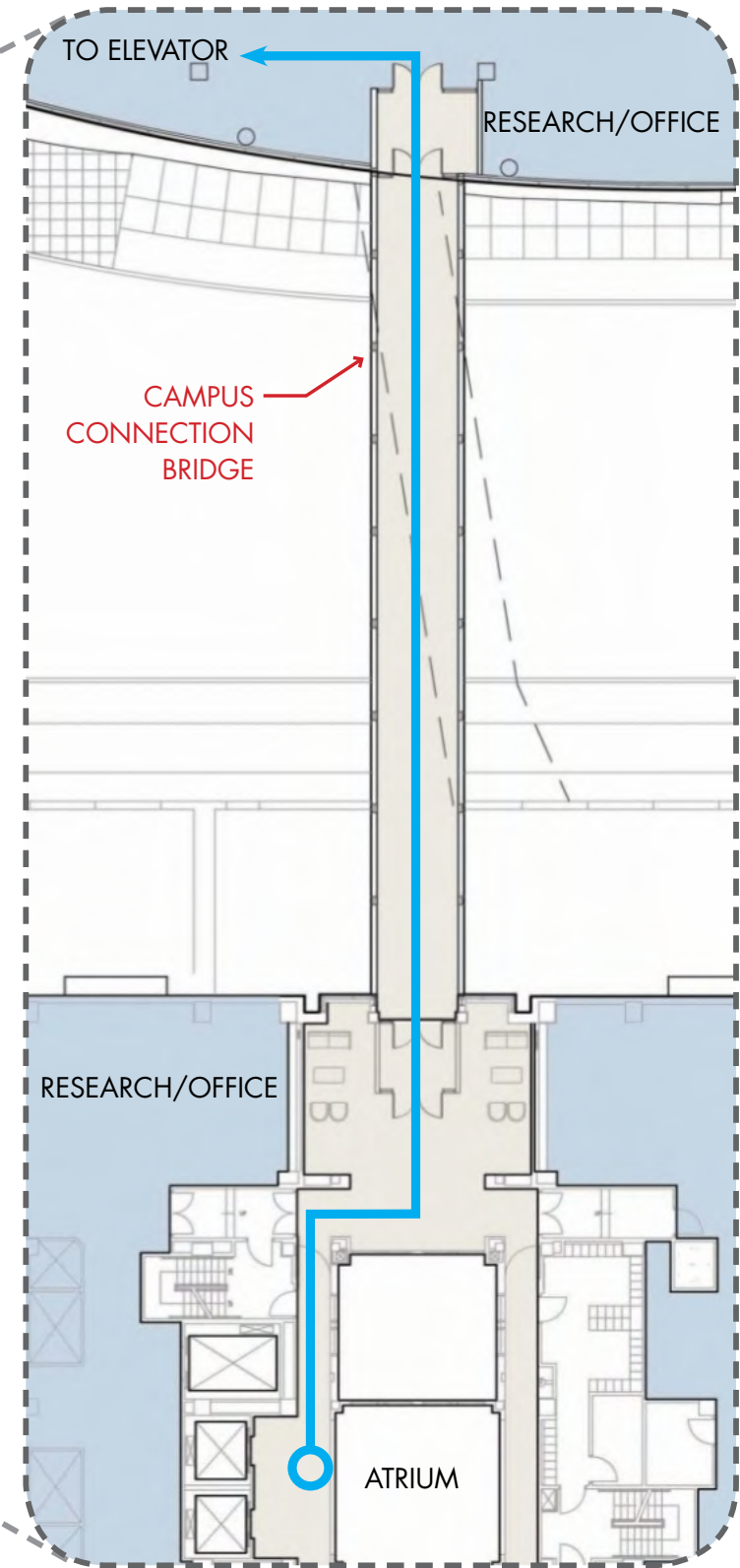
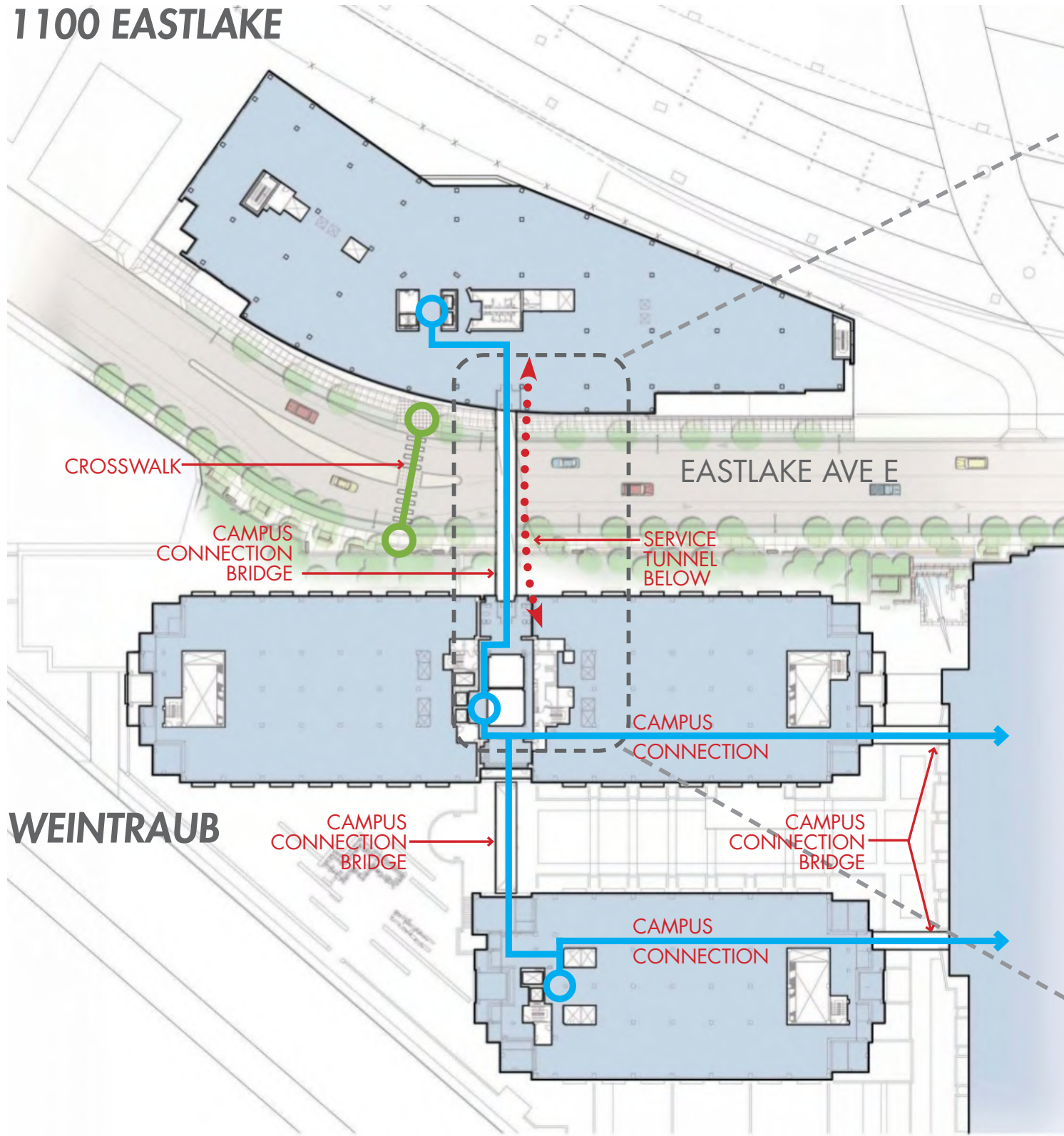
# Seattle Design Commission

---

03.15.2012





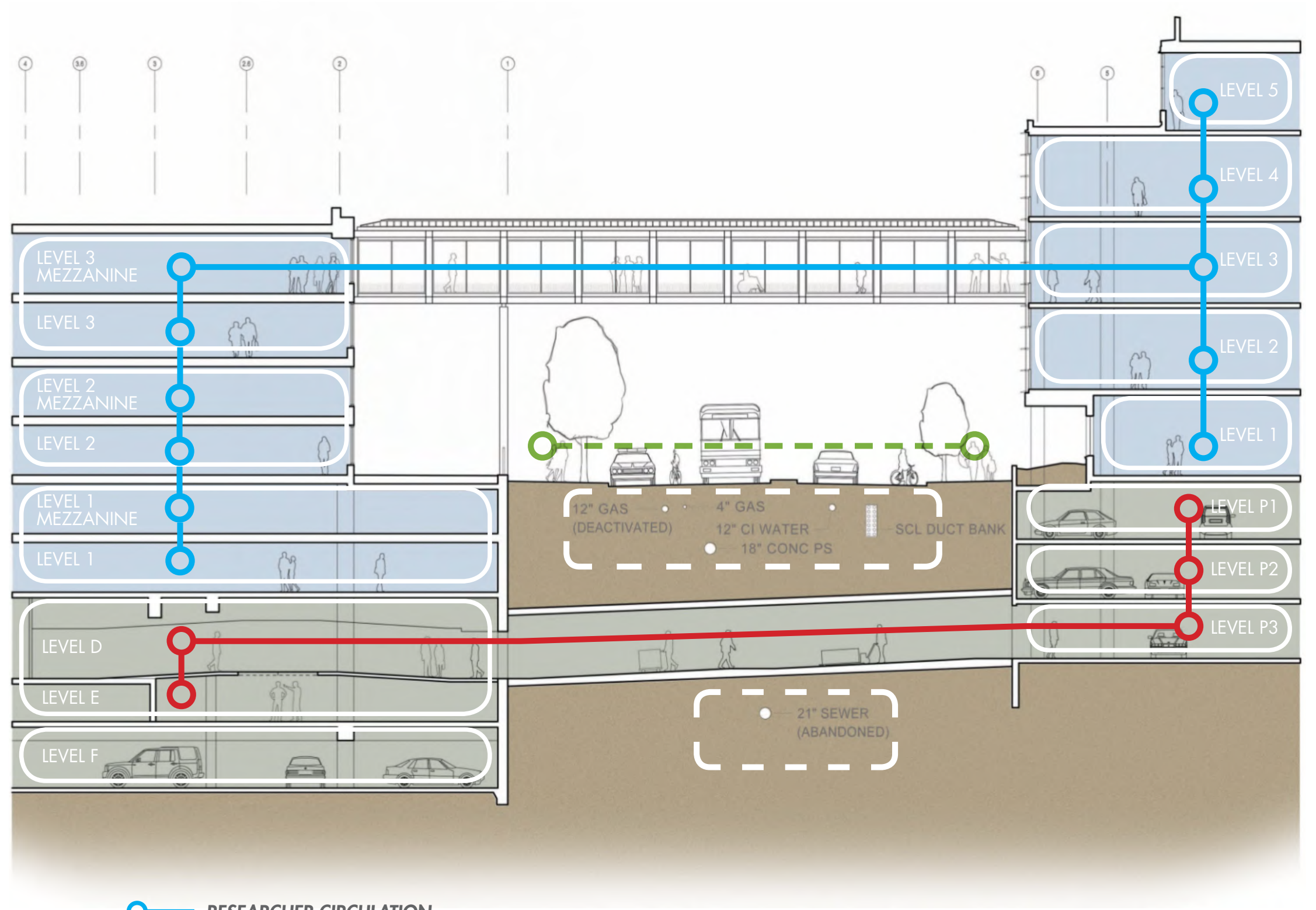


**SITE PLAN**

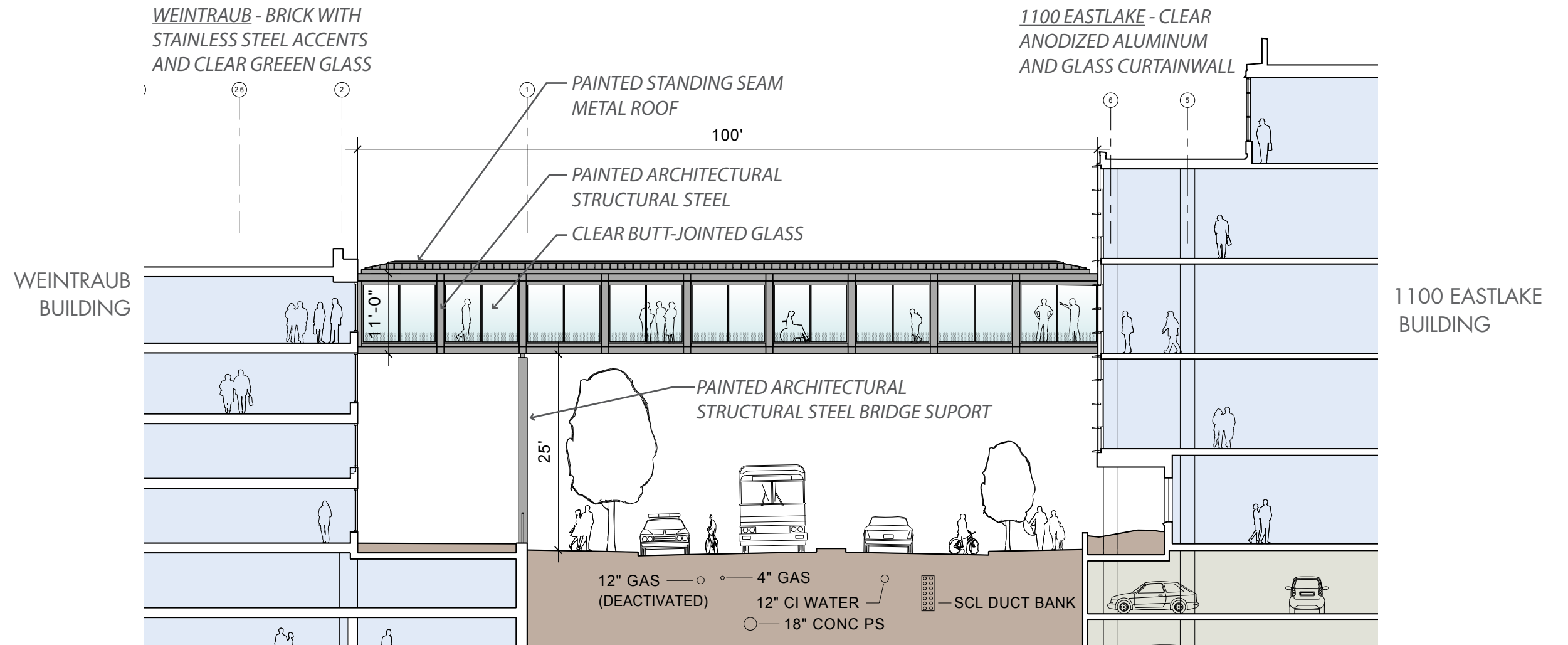
- — **RESEARCHER CIRCULATION**
- — **SERVICE CIRCULATION**
- — **CROSSWALK CIRCULATION**

**ENLARGED PLAN**

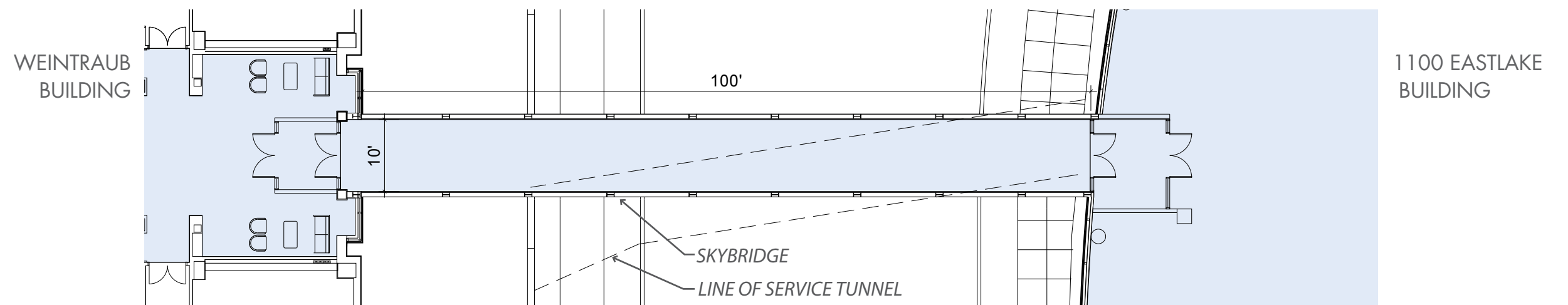
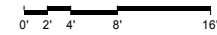




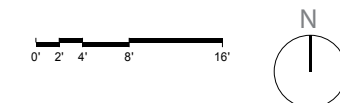
- — **RESEARCHER CIRCULATION**
- — **SERVICE CIRCULATION**
- — **CROSSWALK CIRCULATION**



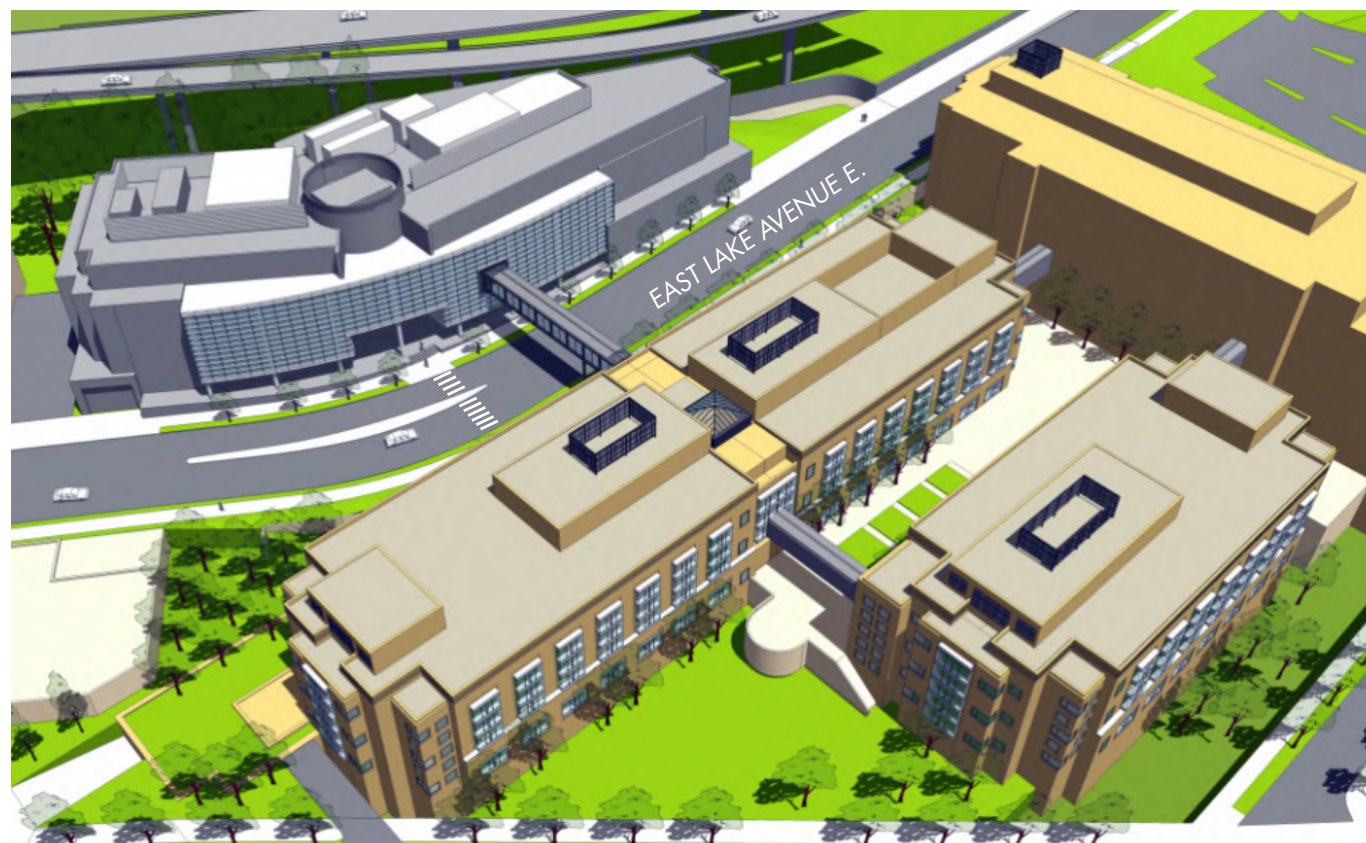
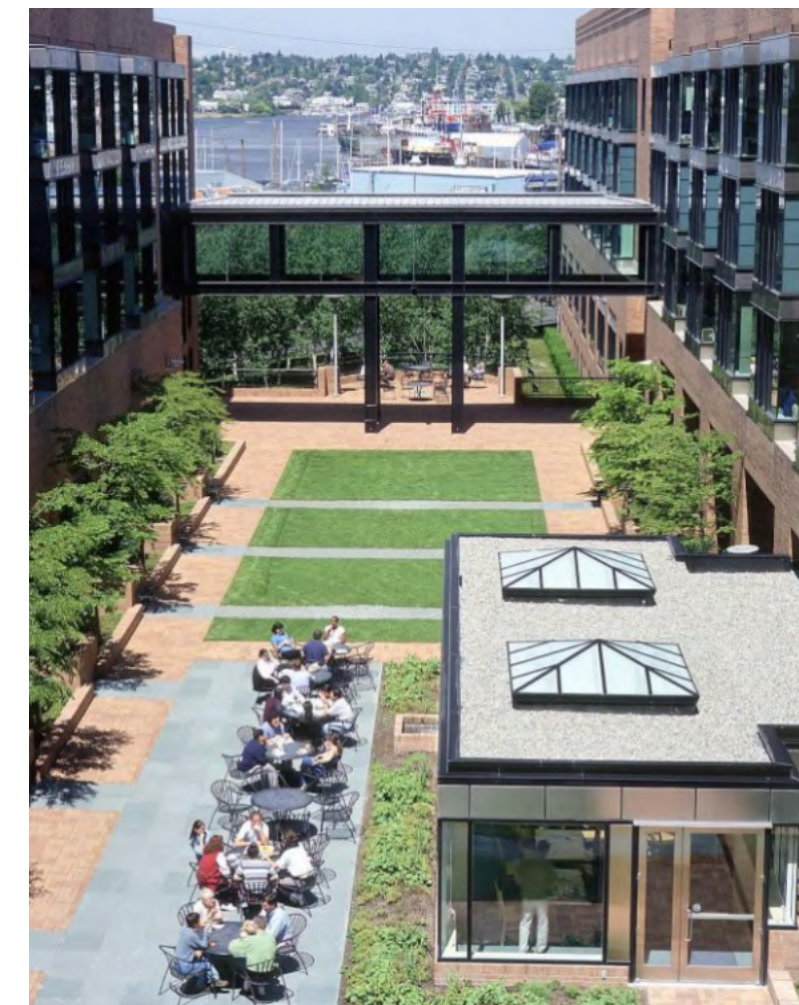
SKYBRIDGE ELEVATION FACING NORTH



SKYBRIDGE PLAN















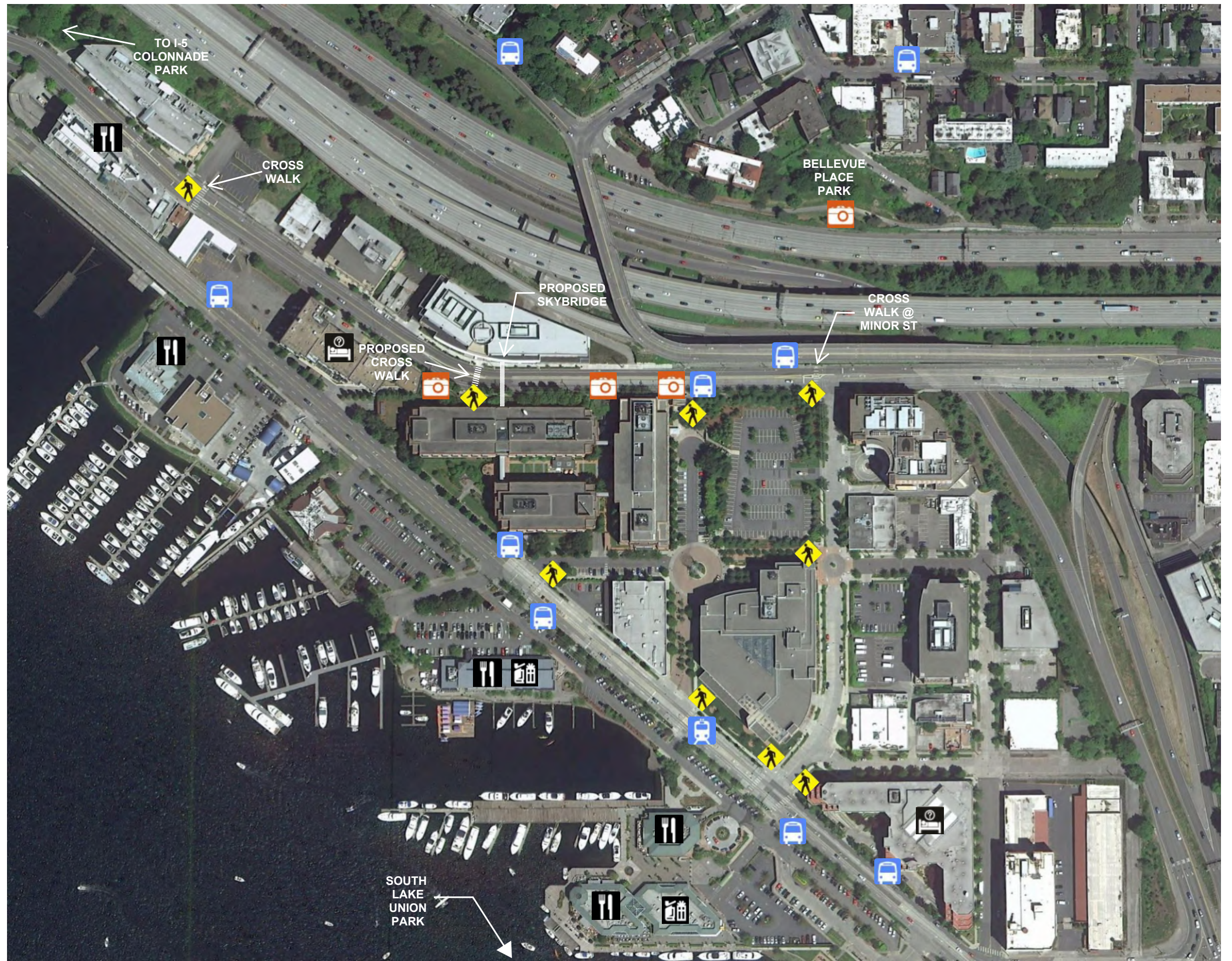




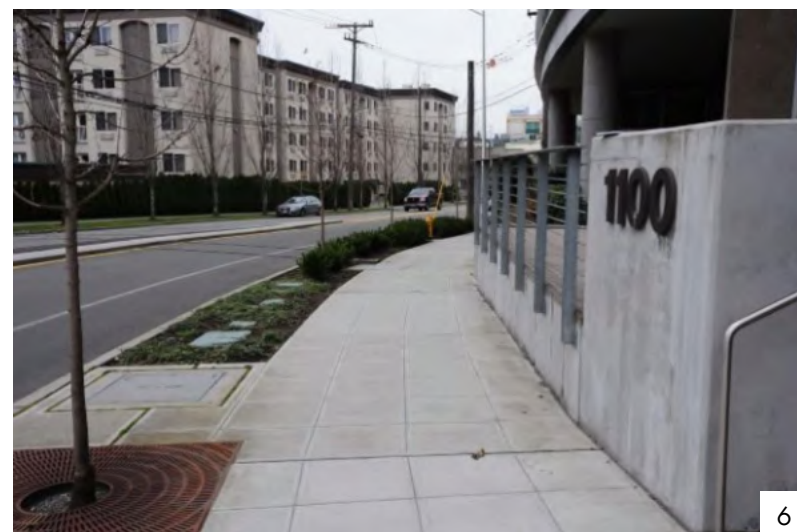






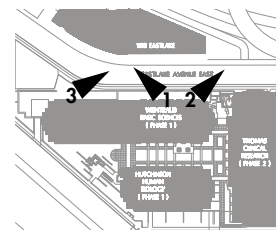






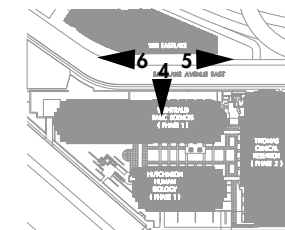
Images:

1. View of Eastlake Ave E looking North
2. View from Eastlake Ave E. at I5 Ramping
3. East Lake Avenue E. looking South.



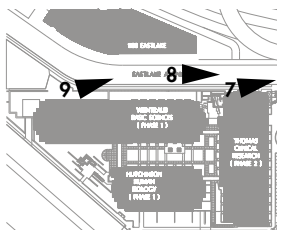
Images:

4. View Looking West at Weintraub Building
5. View Looking South at 1100 Building Entry
6. View Looking North at 1100 Building Entry



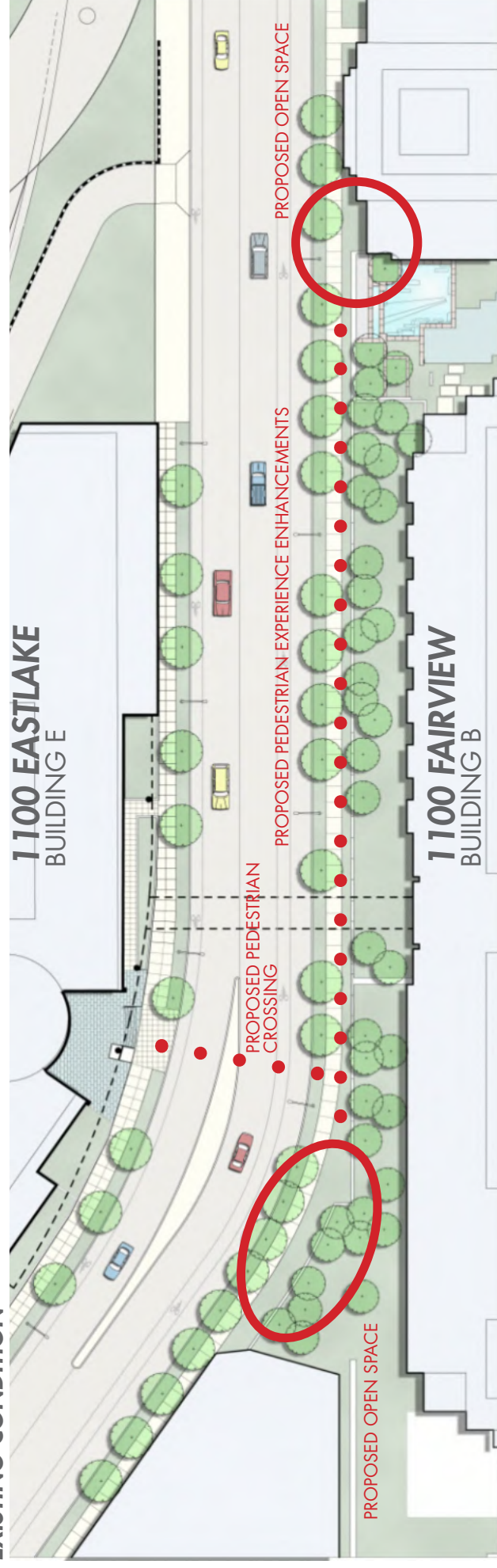
Images:

7. Eastlake Ave E. at I5 Ramping
8. Eastlake Ave. E. Looking South
9. East Lake Ave E. Looking South at 1100 Building





**EXISTING CONDITION**

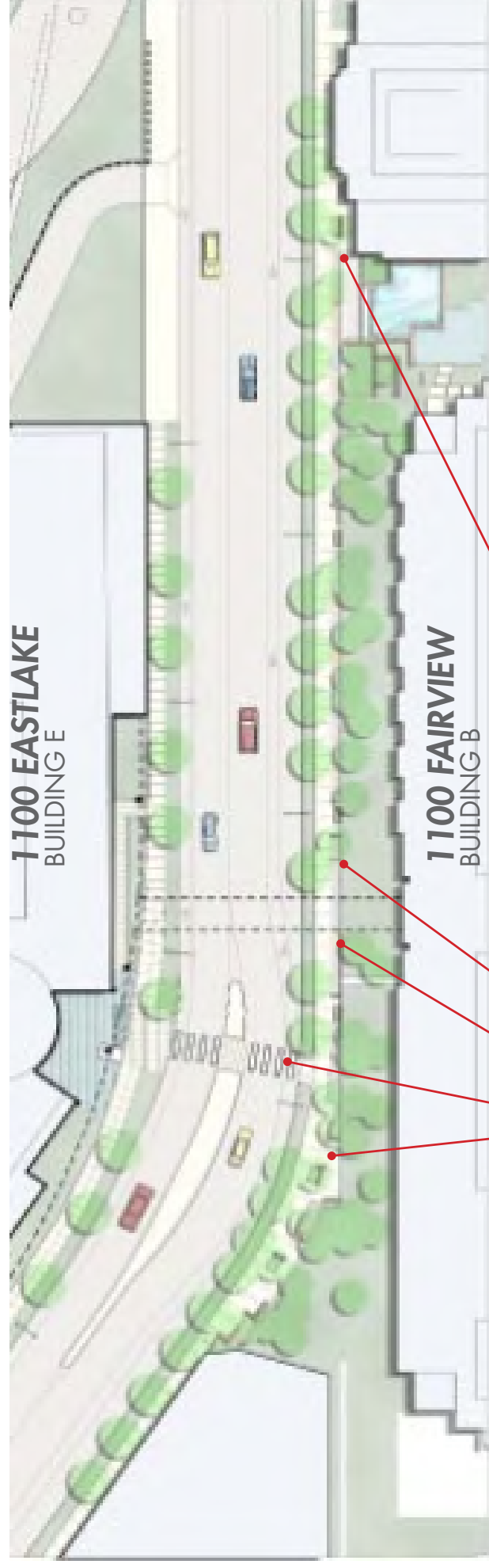


**Goals**

- PROVIDE USABLE PUBLIC OPEN SPACE.
- INTRODUCE TEXTURE AND FRAGRANCE TO THE STREETSCAPE.
- CONTINUE CAMPUS FAMILY OF STONE BENCHES AND FURNITURE ELEMENTS.
- CONSIDER POTENTIAL FOR INTEGRATED ART WORK.



**PROPOSED IMPROVEMENTS**



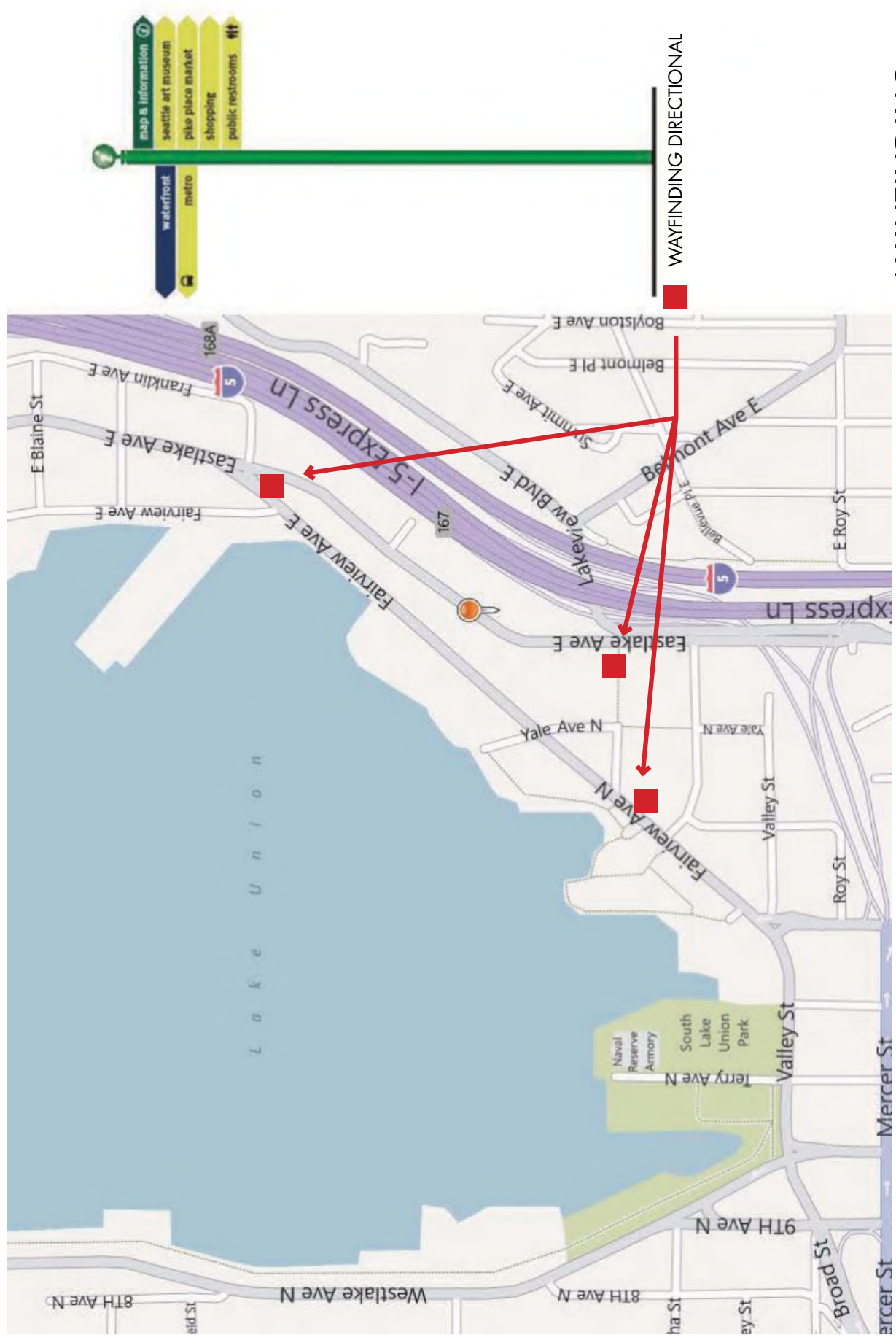
**Elements**

- ENHANCE SIDEWALK WITH STONE GARDEN SEATING, AND PASSIVE WATER FEATURE
- PEDESTRIAN CROSSWALK
- LINK SPACES ALONG FRONTAGE WITH SENSORY GARDEN AND SEATING
- REPLACE FENCELINE WITH GUARDRAIL TO DIMINISH SEPARATION BETWEEN PUBLIC AND PRIVATE REALM
- INVITE DISCOVERY AT WATERFALL OVERLOOK



**STREETSCAPE at EASTLAKE AVE E**

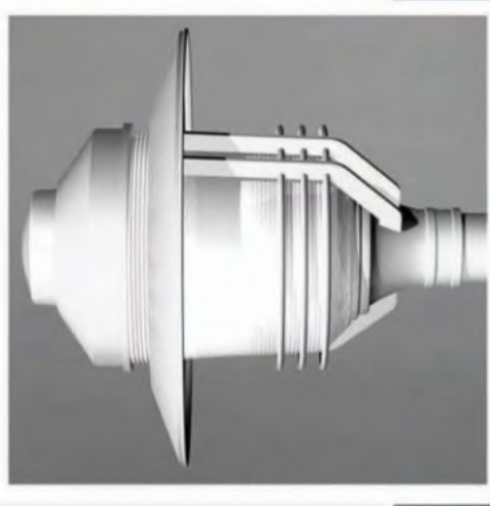




## WAYFINDING



A contribution to the Fairview and Fairview project to assist SDOT in installing the pedestrian safety lights



## LIGHTING at FAIRVIEW & FAIRVIEW