

SEATTLE FIRE STATION 6

Seattle Design Commission Pre-Design Review

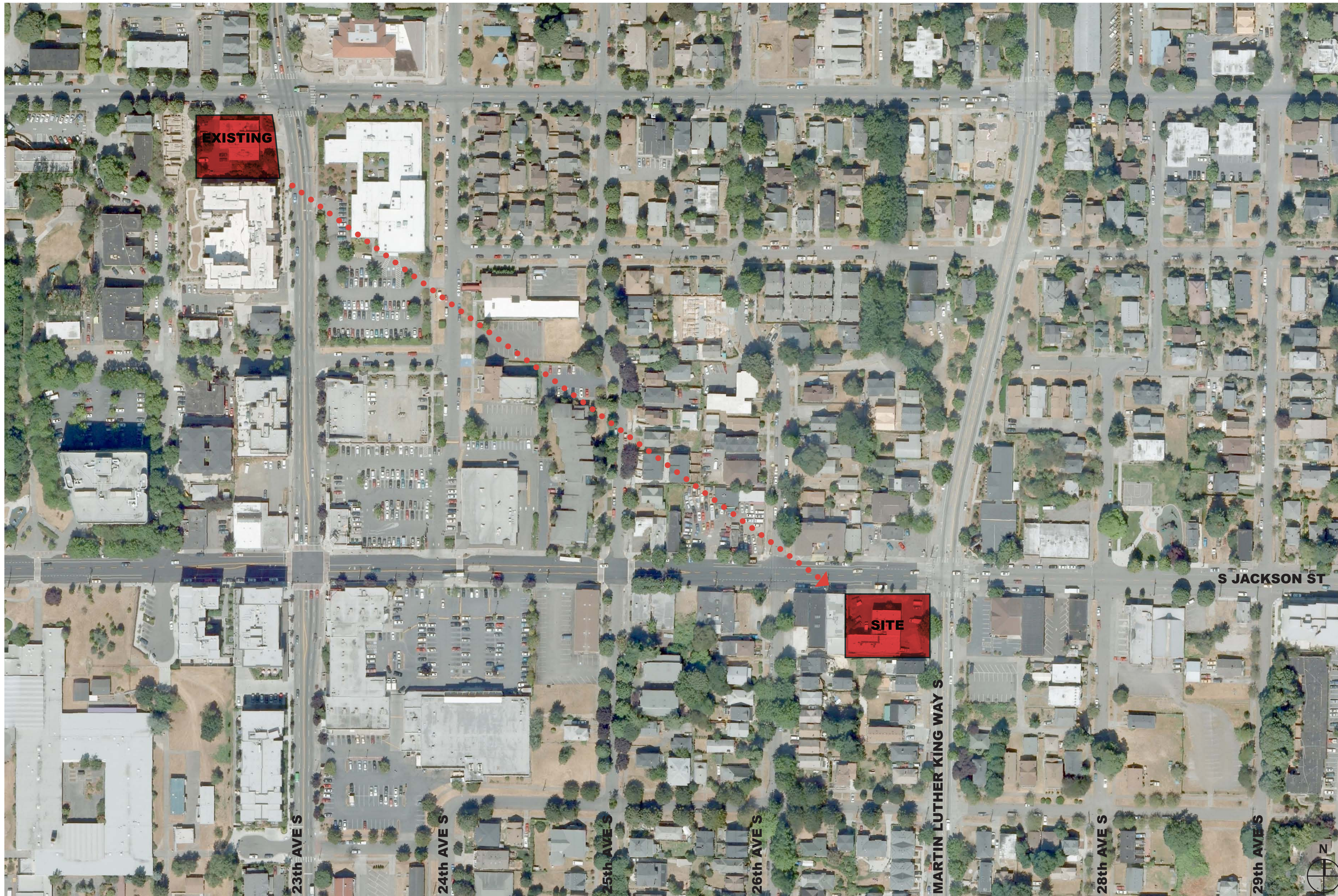
July 2, 2009

CITY OF SEATTLE

Project Manager, FFD/CPD: David L. Jackson
SFD Liason: Molly Douce
Public Art Project Manager: Jason Huff

DESIGN TEAM

Architect: Weinstein A|U
Landscape: Murase Associates
Structural: Swenson Say Faget
Civil: Magnusson Klemencic Associates
Mechanical: Stantec
Electrical: Travis Fitzmaurice
Sustainability: Paladino & Co.



PROJECT SCOPE

Relocation of Fire Station 6 from existing 7,000 SF (approx.) building on 23rd Avenue South & East Yesler Way to a new 11,400 SF (approx.) building on South Jackson Street & Martin Luther King Avenue South. New building will accommodate an engine truck and a ladder truck and eight on-duty personnel.

SITE INFORMATION

- Zoning: NC-40'
- 23rd & Union/Jackson Residential Village
- 15,400 SF
- Street Level Development Standards
- Green Factor

PROJECT DATE:
July 2, 2009

LOCATION:
Seattle, Washington



Seattle Fire Station 6

Seattle Design Commission: Pre-Design



EXISTING FIRE STATION 6

121 Stewart Street, Suite 200
Seattle, Washington 98101

Telephone 206 443 8606
Facsimile 206 443 1218

WEINSTEIN AU ARCHITECTS + URBAN DESIGNERS LLC

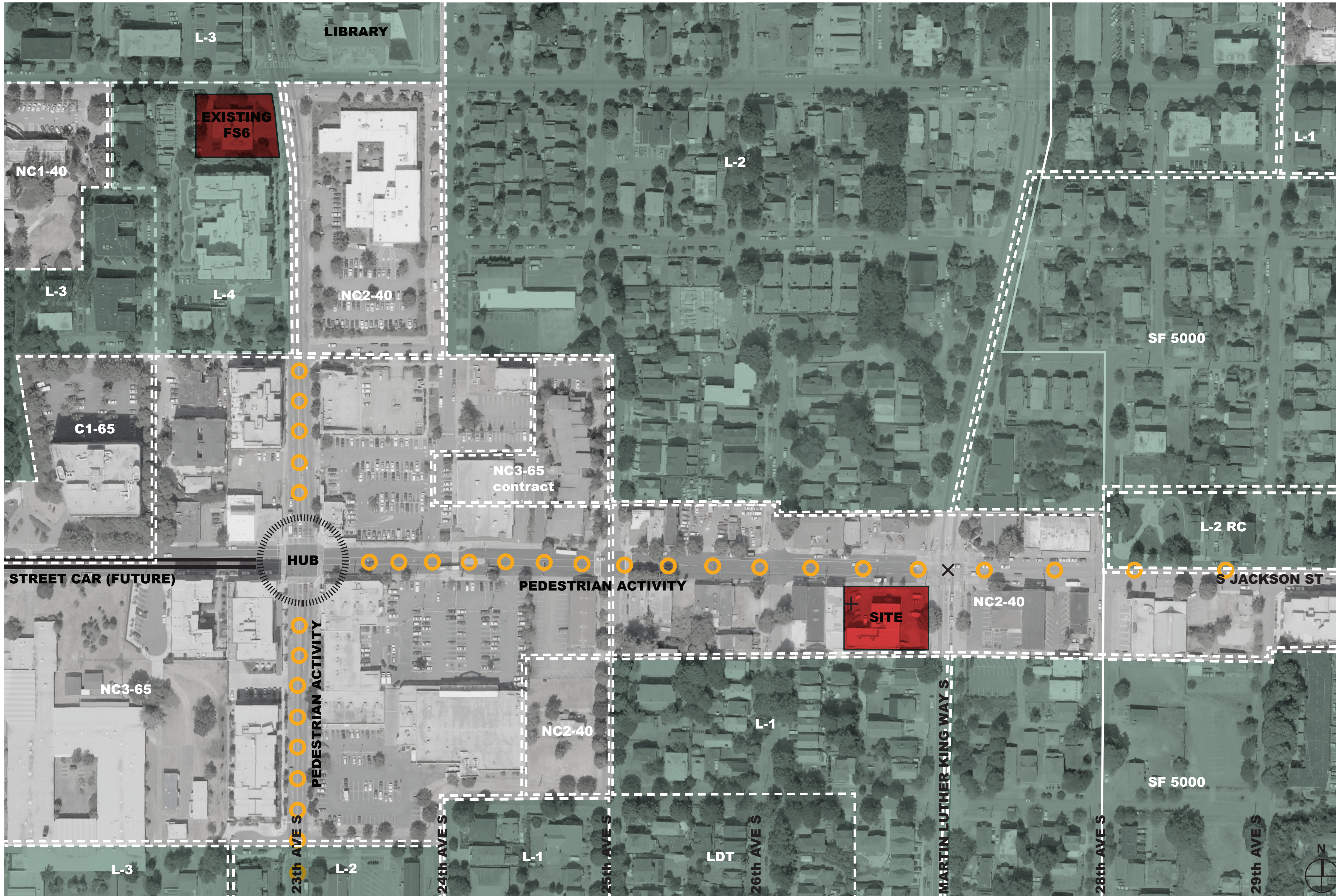


NEIGHBORHOOD II STATION PROGRAM

Core & Operations Support	SF	Administration Area	SF	Crew Area	SF	Equipment & Circulation	SF
GROUND FLOOR		GROUND FLOOR		GROUND OR UPPER FLOOR		GROUND OR UPPER FLOOR	
Apparatus Bay - Engine	1,340	Public Lobby	140	Beanery	496	Electrical Room	80
Apparatus Bay - Ladder	1,340	Station Office	315	Day Room	266	Communication Room	64
Hose Dryer & Storage Alcove	120	Officer's Quarters (Engine)	340	Physical Training	480	Mechanical Room	150
Report Desk/Dispatch Counter	24	Officer's Quarters (Ladder)	340			General Storage	130
Battery Changing Alcove	24	Accessible Restroom (unisex)	60	# of Singles	8		
Bunker Gear Cleaning Room	130	Janitor	36	Sleep Room - Single (126 sf)	756		
Bunker Gear Room	460			# of Doubles	1		
Maintenance Area	160			Sleep Room - Double (144 sf)	144		
Compressor	20			# of Toilet/Shower Rooms	4		
EMS Storage	110			Toilet/Shower Rooms (81 sf)	324		
Apparatus Equip Storage - Ladder	150			Laundry/Utility	90		
Apparatus Equip Storage - Engine	100			Janitor (second floor)	36		
Major Disaster Supply Storage	160						
Receiving Area	64						
Decon/Wash Alcove	175						
Apparatus Restroom (unisex)	60						
	4,437		1,231		2,592		424
(1,757 w/out apps bays)							
SUB-TOTAL							8,684
Circulation							1,823
Stairs							720
Elevator							156
TOTAL							11,383

PROJECT BUDGET

- To be determined through Pre-Design Phase
- Total Project Budget: \$10,400,000, per Levy
- Estimated Construction Budget: \$4,500,000
 - demolition of existing structure
 - new building construction
 - ROW improvements
 - site improvements



NEIGHBORHOOD

23rd & Union/Jackson Residential Village in Seattle's Central District. Mixed NC and L zones, and SF 500 zones.

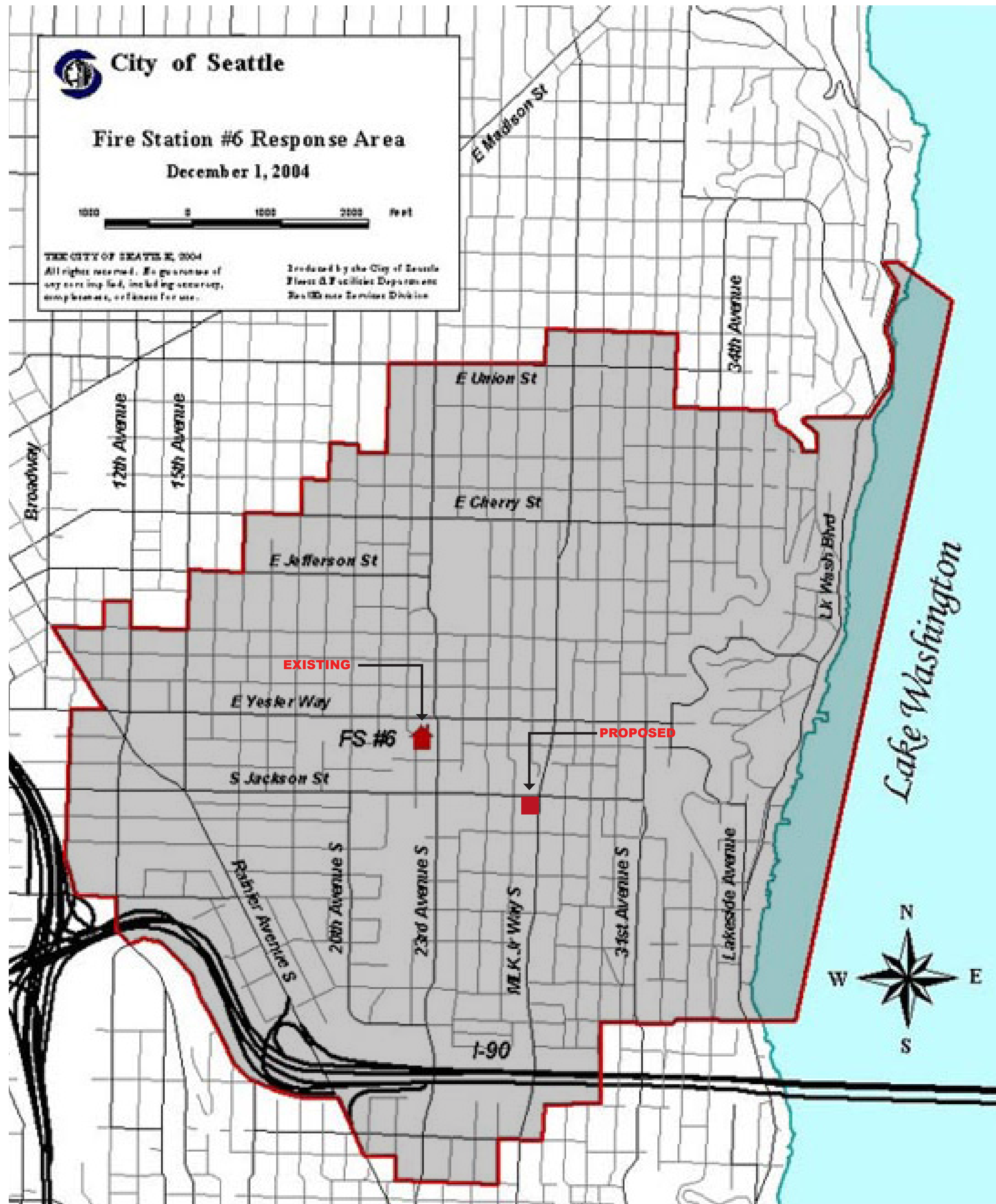
- NC2-40: 40' (Neighborhood Comm. 40')
- NC3-65: 65' (Neighborhood Comm. 65')
- C1-65: 65' (Commercial 1)
- L-1: 25' (Lowrise 1)
- L-2: 25' (Lowrise 2)
- L-3: 30' (Lowrise 3)
- L-4: 37' (Lowrise 4)
- LDT: 25' (Lowrise Duplex/Triplex)
- SF5000: (Single Family)

SITE INFORMATION

- Zoning: NC-40'
- 23rd & Union/Jackson Residential Village
- Street Level Development Standards
- Green Factor

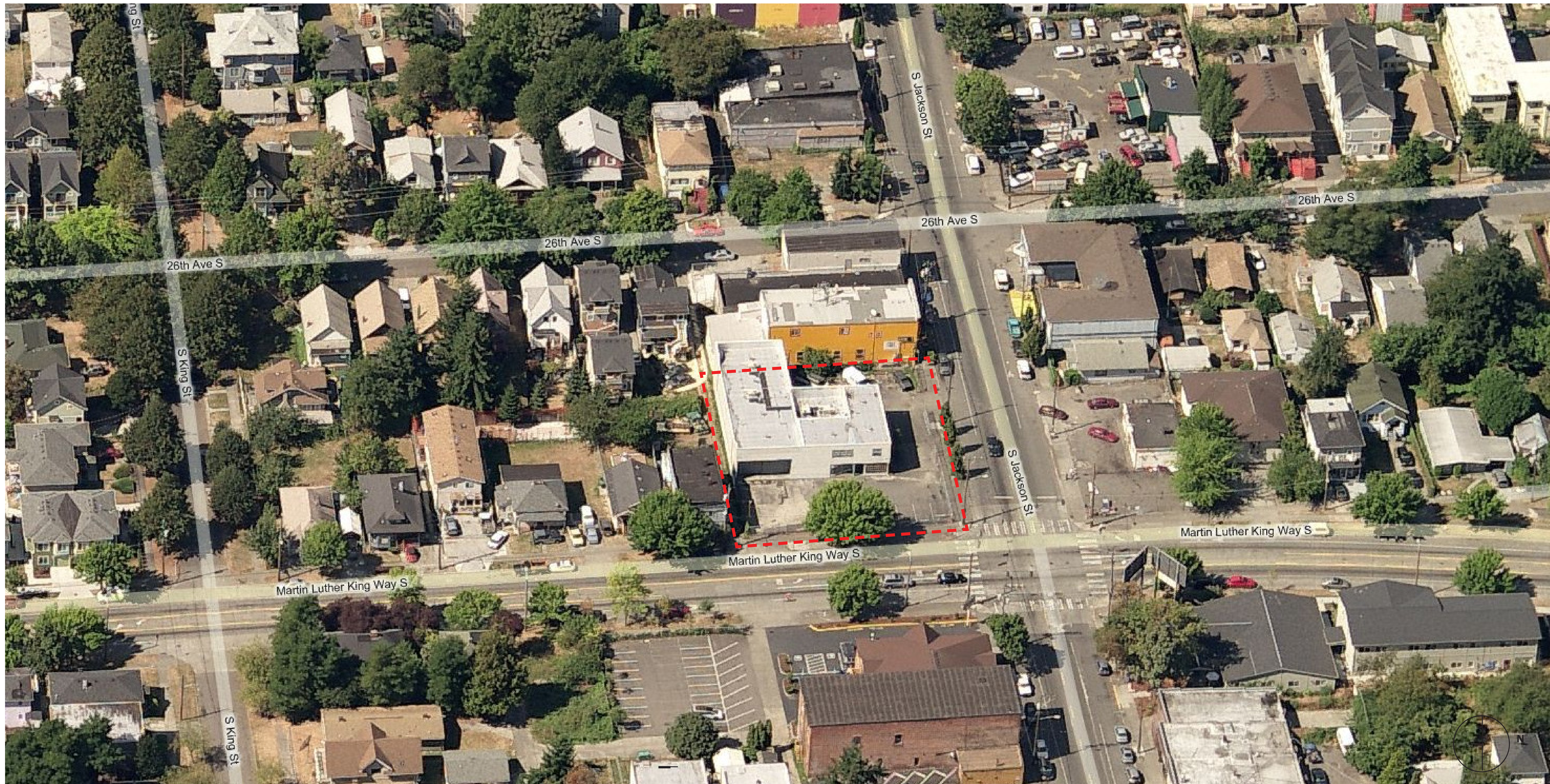
BUS SERVICE

- #14 (Downtown - Mount Baker)
- #8 (Seattle Center)
- #27 (Colman Park)
-



2008 EMERGENCY RESPONSE TOTALS for FS6

E6	2,656	7.28 times/day
L3	1,098	3.01 times/day



NEIGHBORHOOD AERIAL LOOKING WEST

121 Stewart Street, Suite 200
Seattle, Washington 98101

Telephone 206 443 8606
Facsimile 206 443 1218

WEINSTEIN **AU** ARCHITECTS + URBAN DESIGNERS LLC



Apartment to South of site, MLK looking South



Alley looking West



Alley looking East

NEIGHBORHOOD - IMMEDIATE CONTEXT

121 Stewart Street, Suite 200
Seattle, Washington 98101

Telephone 206 443 8606
Facsimile 206 443 1218



Panorama, facing site and looking Southwest



Church of God Evangelistic Center at SW corner of MLK & S Jackson



Panorama, standing on site and looking North

NEIGHBORHOOD - IMMEDIATE CONTEXT

121 Stewart Street, Suite 200
Seattle, Washington 98101

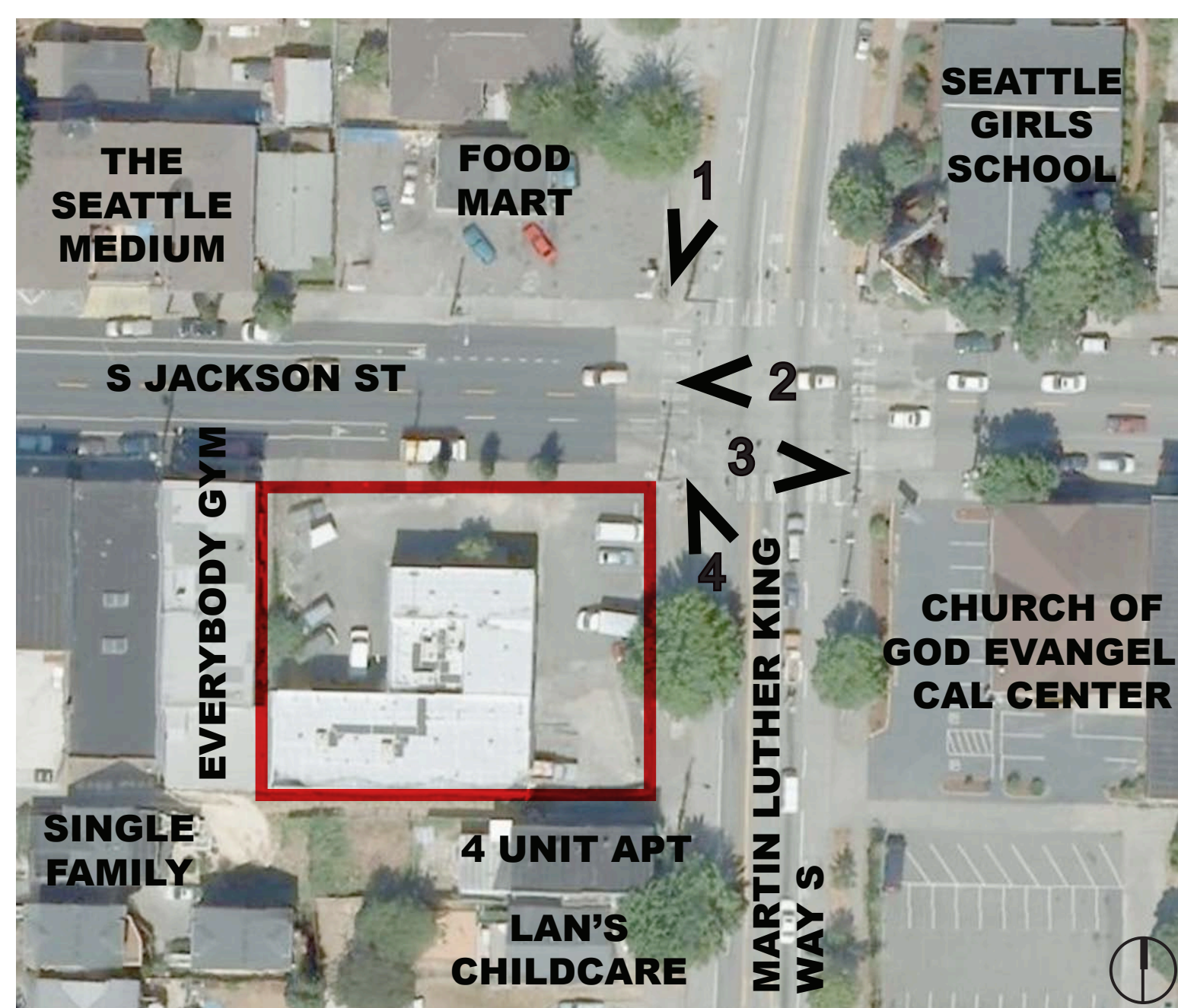
Telephone 206 443 8606
Facsimile 206 443 1218



looking North on MLK 1



2 looking East on Jackson



looking West on Jackson 3

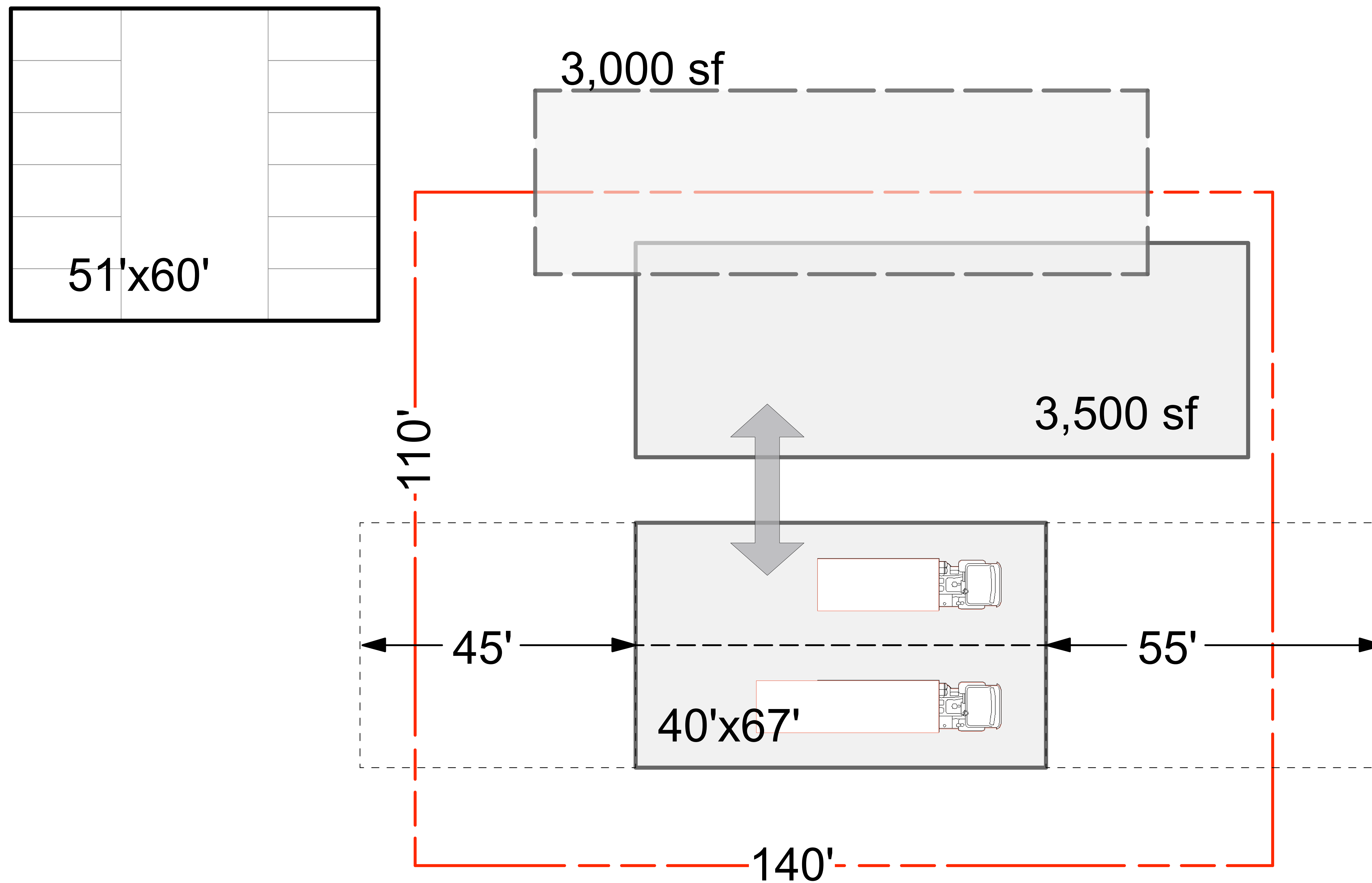


4 looking South on-MLK

SITE CONTEXT

121 Stewart Street, Suite 200
Seattle, Washington 98101

Telephone 206 443 8606
Facsimile 206 443 1218



- Exit to MLK Ave.S.
- Drive-through Apparatus Bays
- Parking for 12
- Alley
- Existing Structures

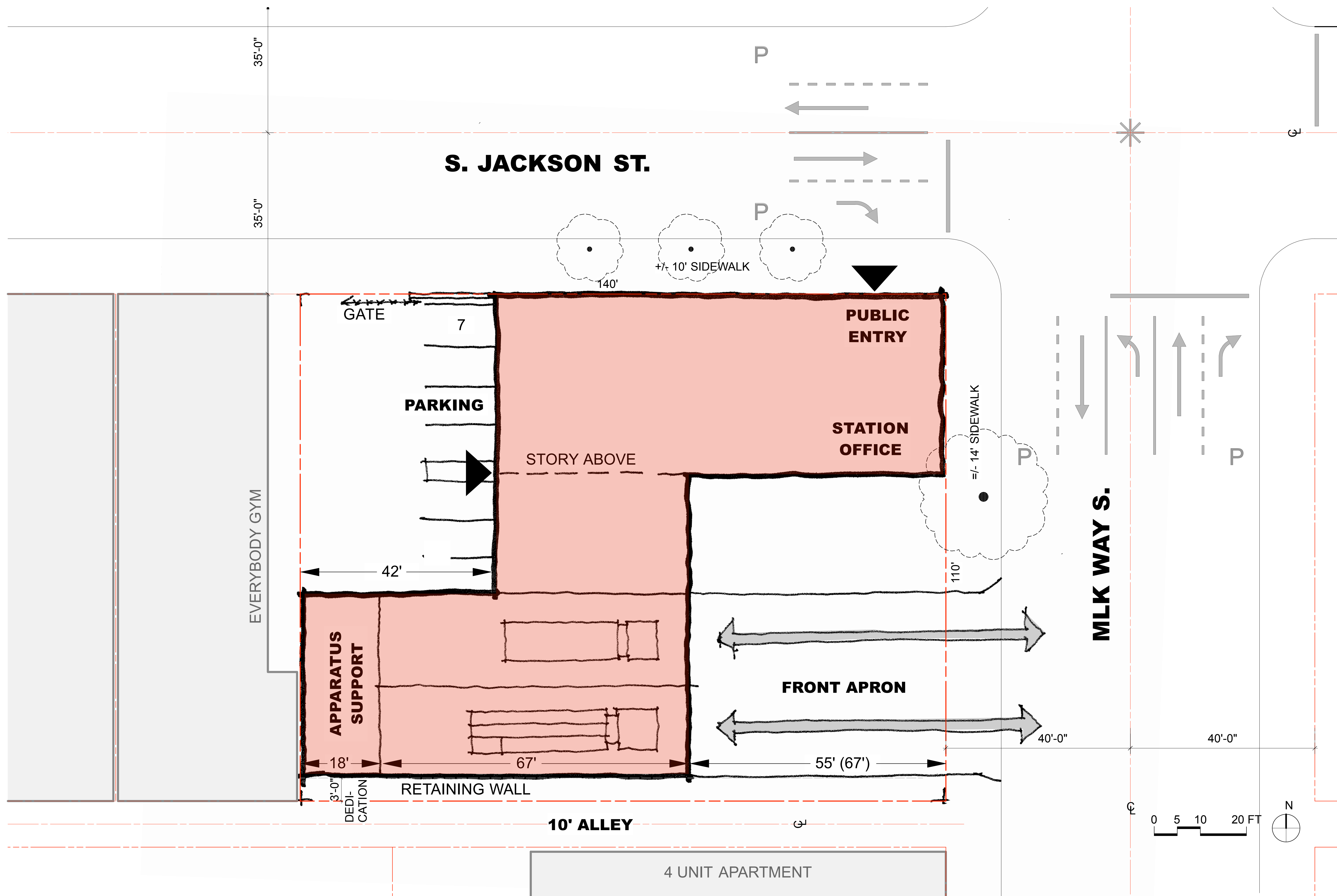


DIAGRAM 1 - BACK-IN

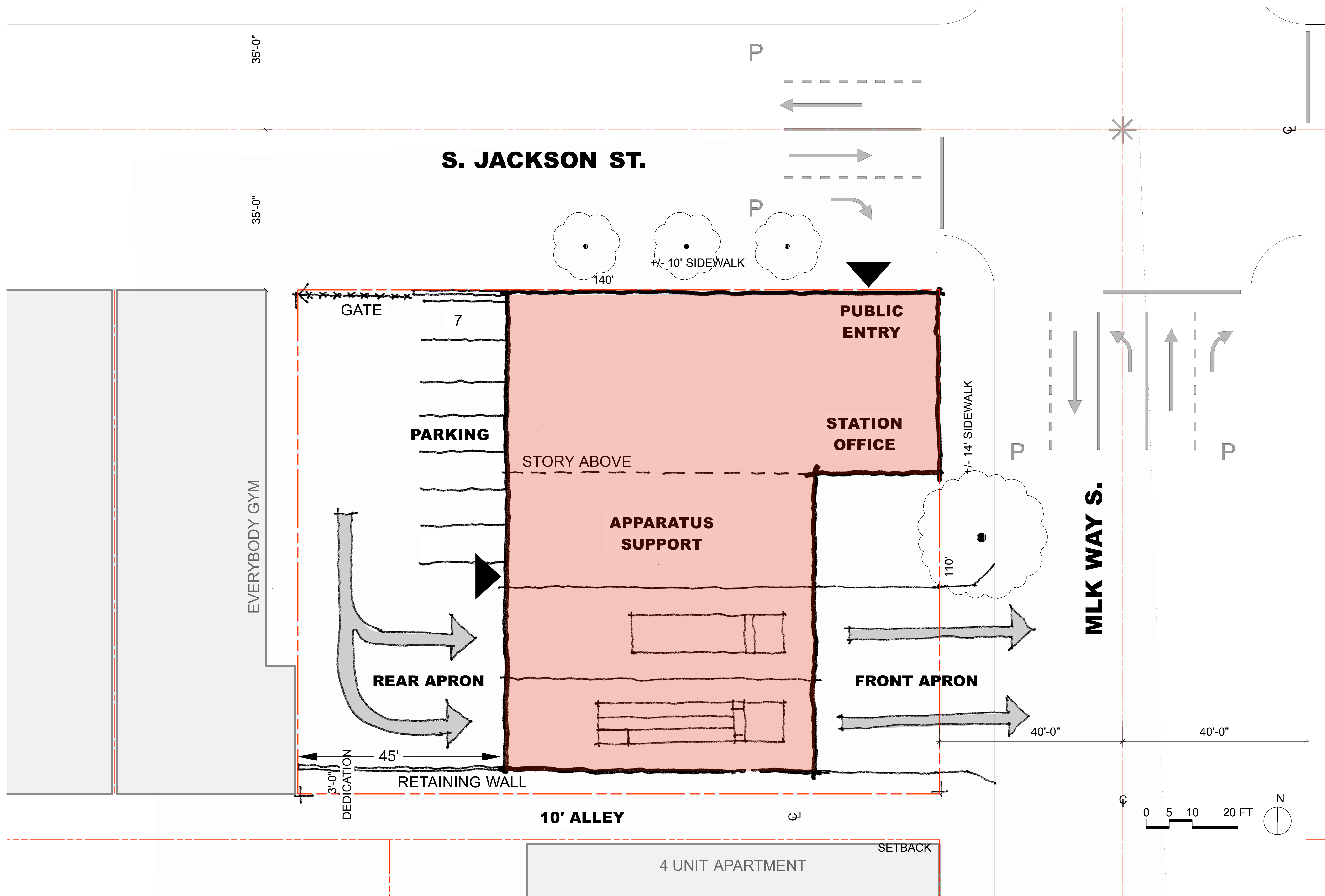


DIAGRAM 2 - DRIVE-THRU AT SOUTH OF SITE

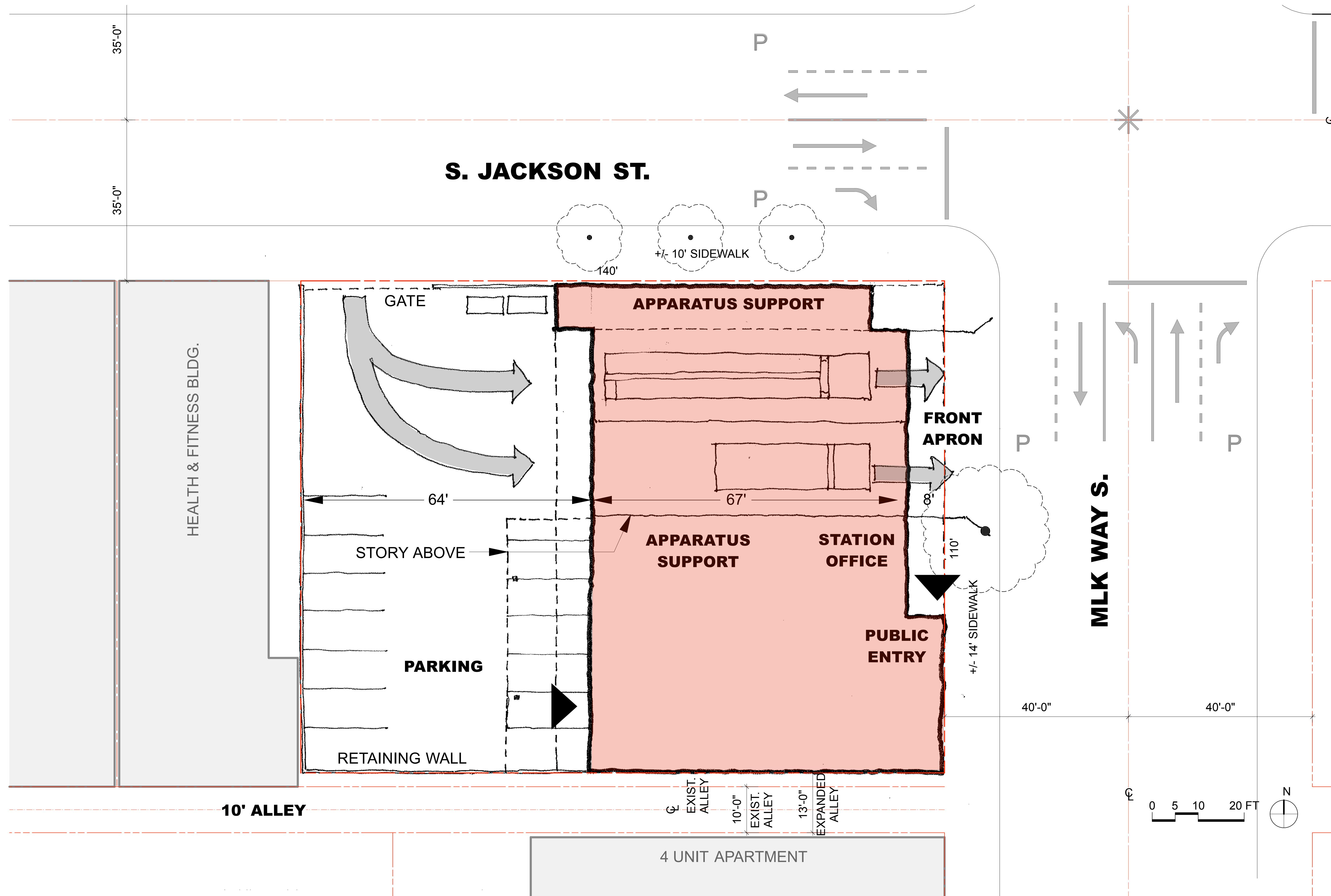
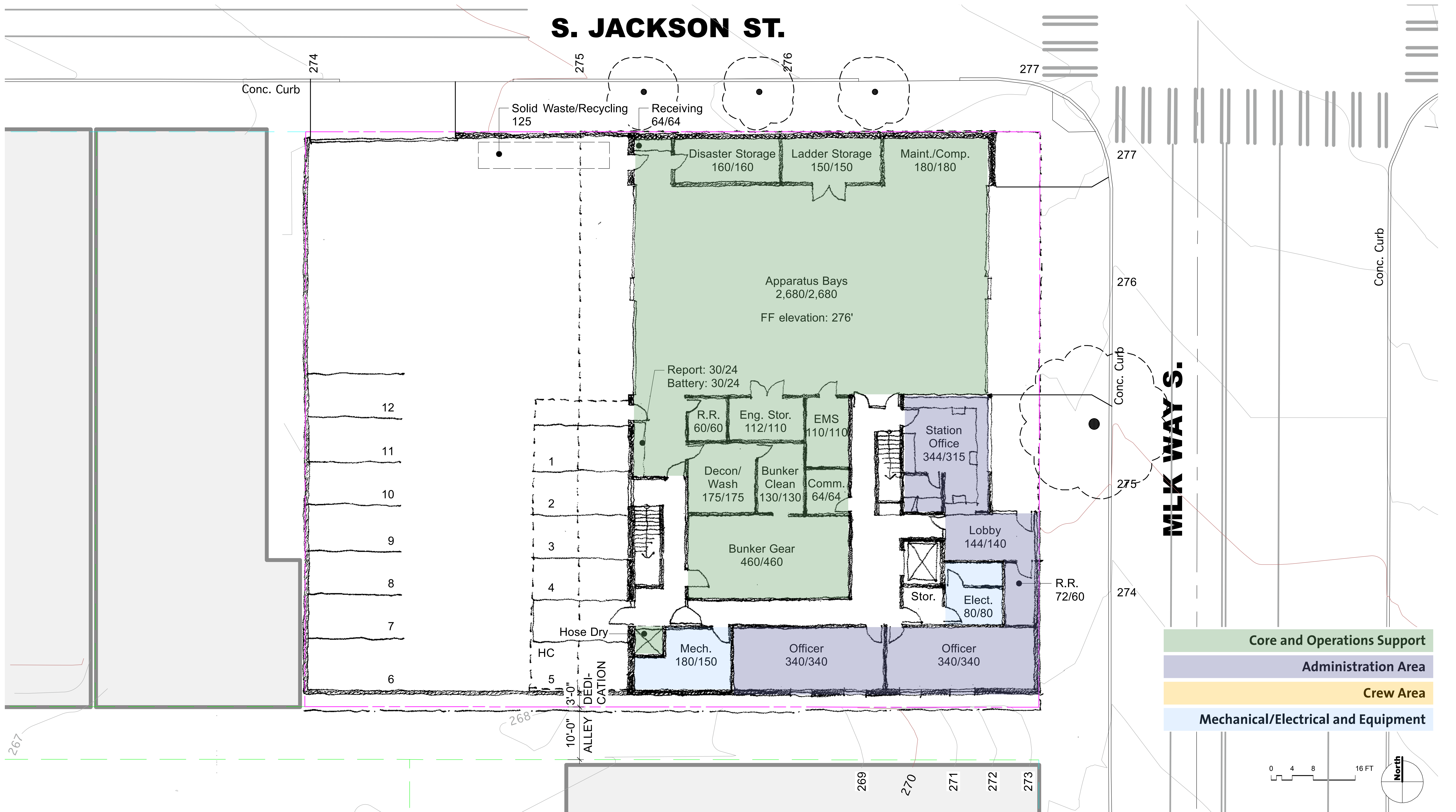
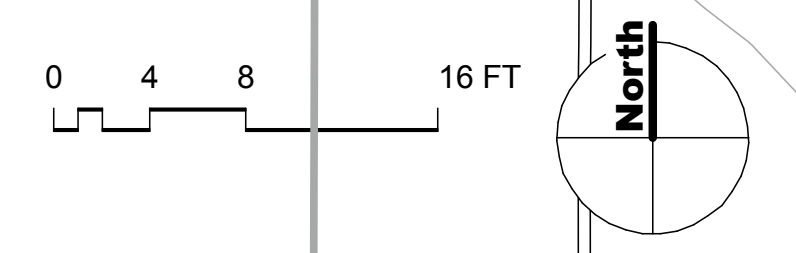


DIAGRAM 3 - DRIVE-THRU AT NORTH OF SITE



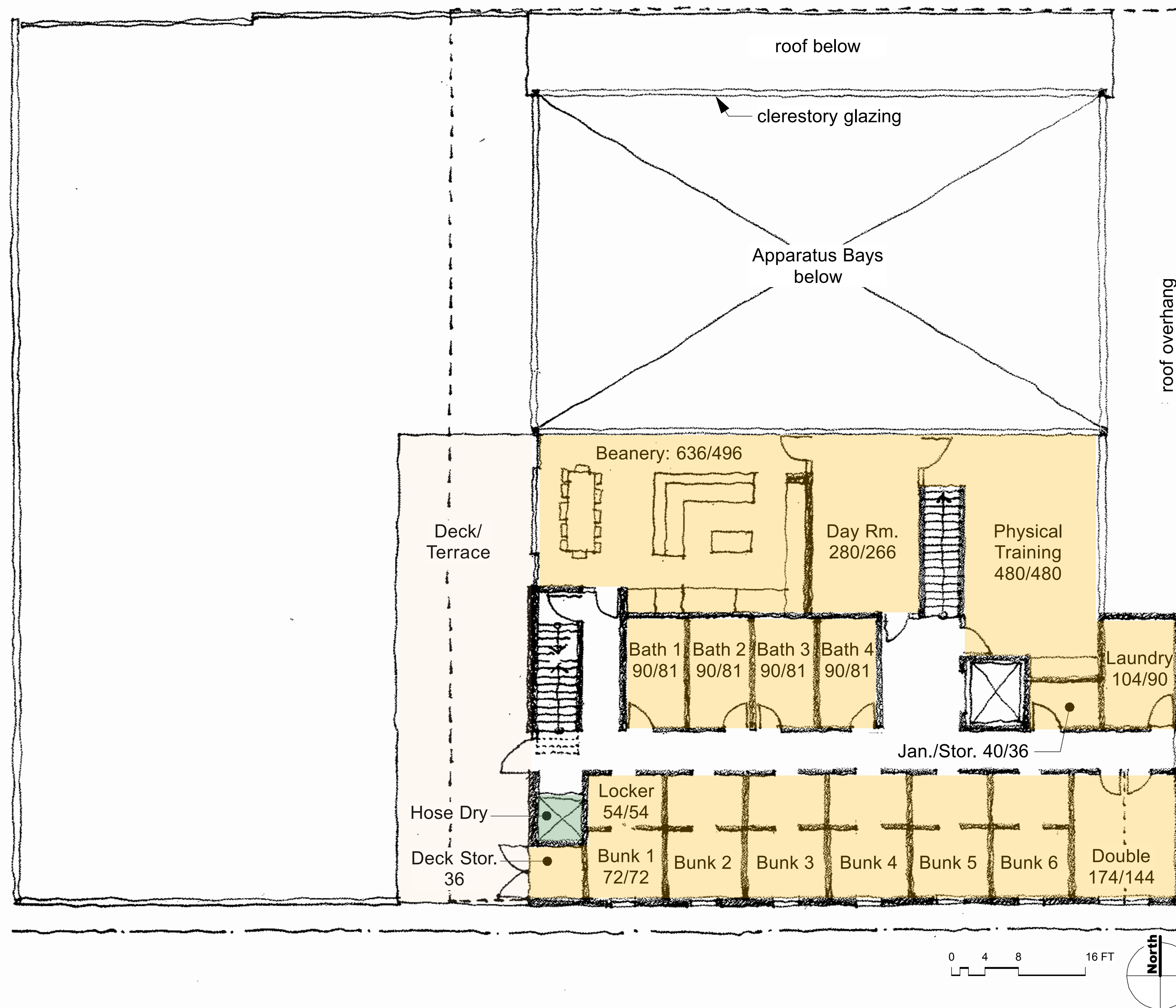
- Core and Operations Support
- Administration Area
- Crew Area
- Mechanical/Electrical and Equipment



LEVEL ONE STACKING DIAGRAM

121 Stewart Street, Suite 200
Seattle, Washington 98101

Telephone 206 443 8606
Facsimile 206 443 1218



- Core and Operations Support
- Administration Area
- Crew Area
- Mechanical/Electrical and Equipment

LEVEL TWO STACKING DIAGRAM