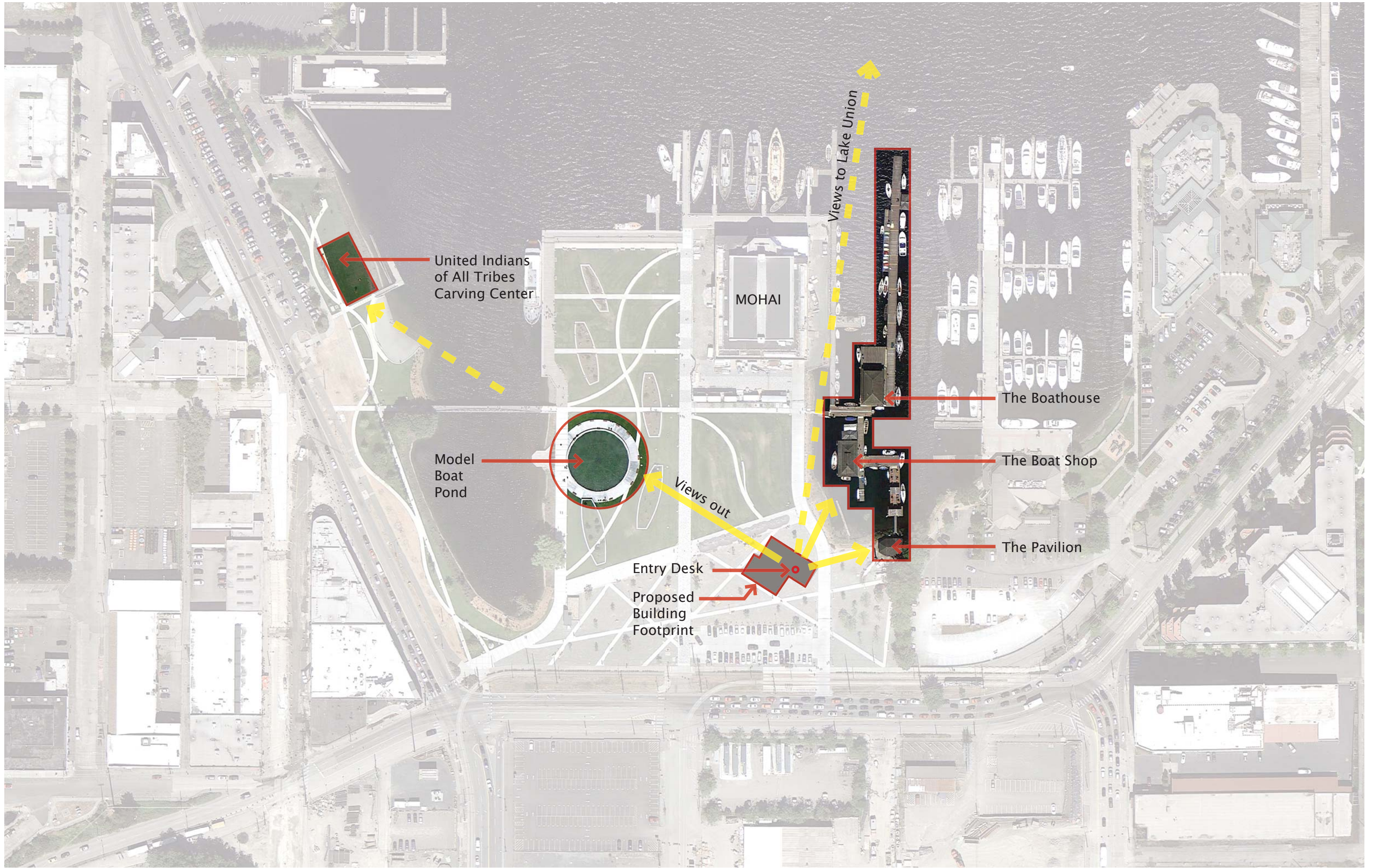
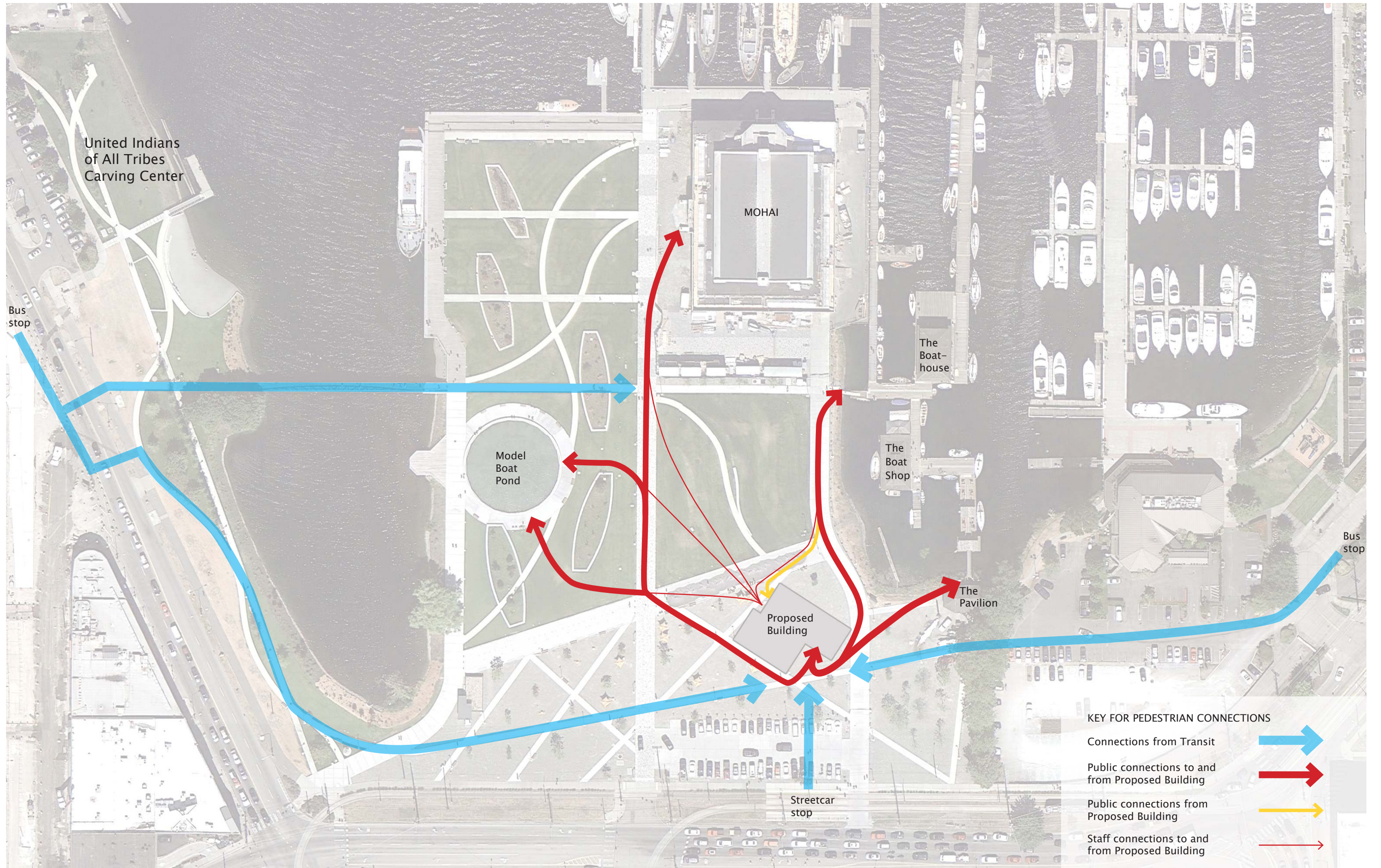


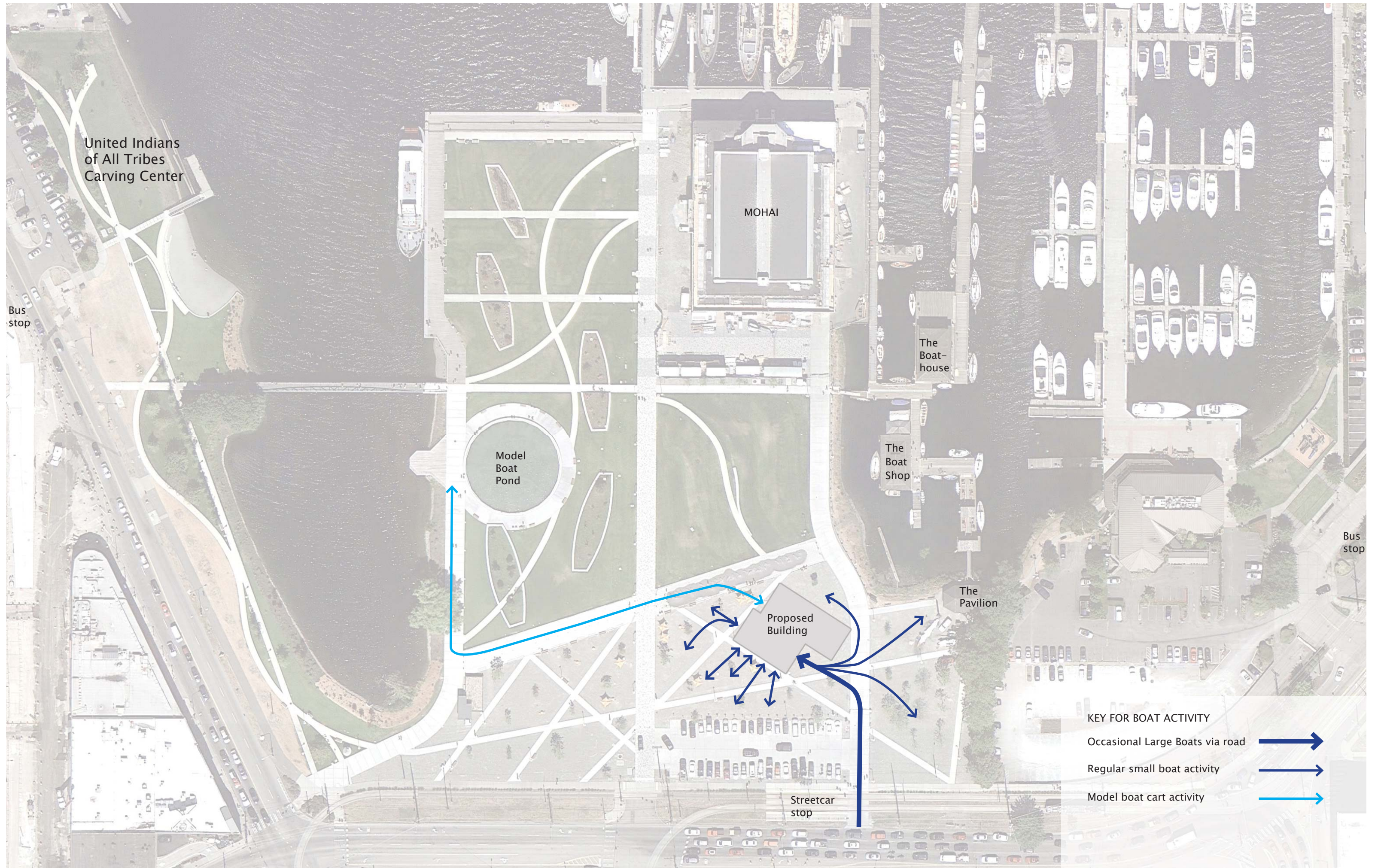


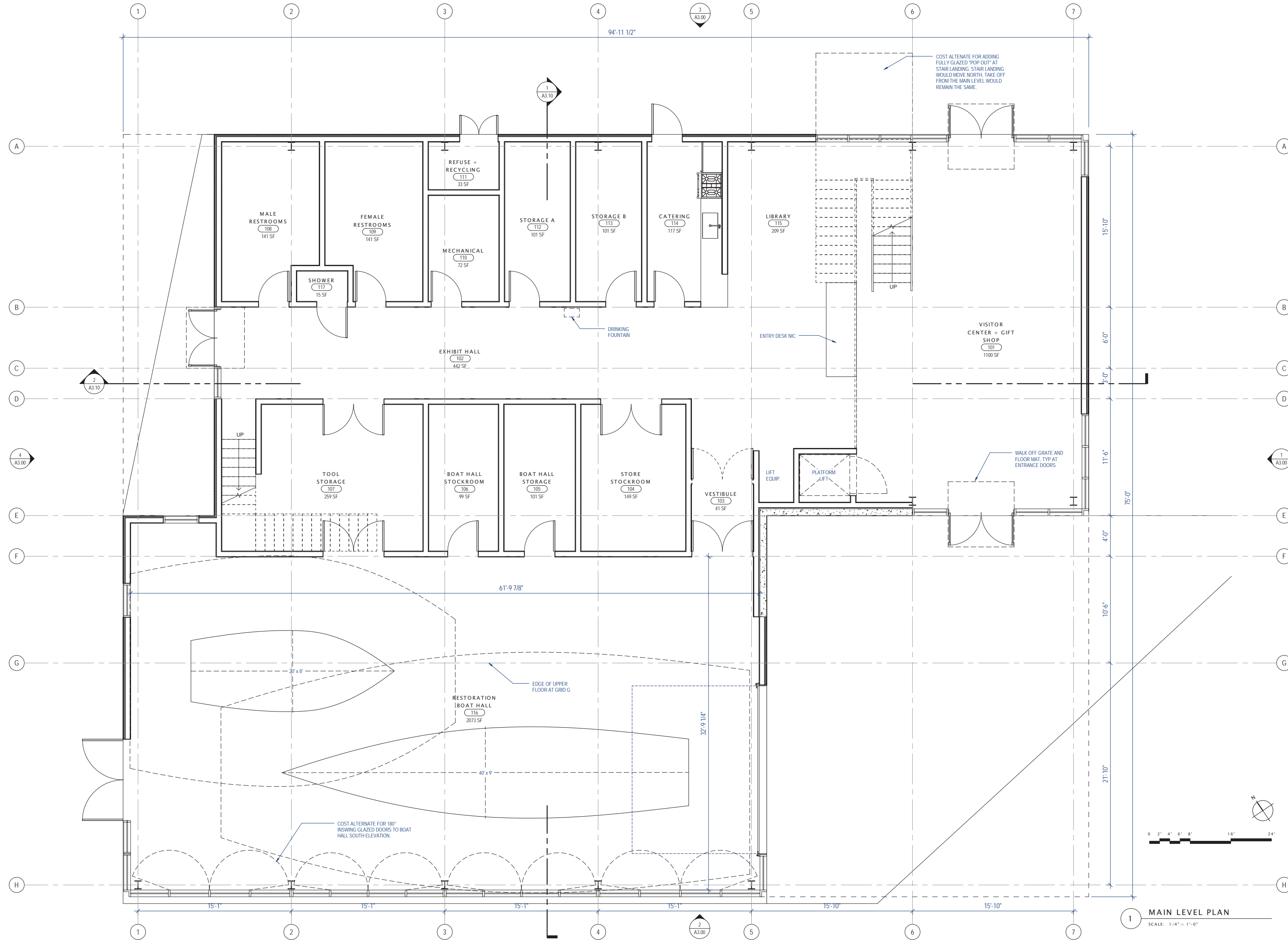
Image courtesy of PEMCO Webster & Stevens Collection, Museum of History & Industry











COST ALTERNATE FOR ADDING FULLY GLAZED "POP OUT" AT STAIR LANDING. STAIR LANDING WOULD MOVE NORTH. TAKE OFF FROM THE MAIN LEVEL WOULD REMAIN THE SAME.

DRINKING FOUNTAIN

ENTRY DESK NIC

VISITOR CENTER + GIFT SHOP (101) 1100 SF

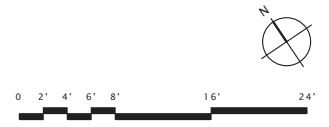
LIFT EQUIP.

PLATFORM LIFT

WALK OFF GRATE AND FLOOR MAT, TYP AT ENTRANCE DOORS

RESTORATION BOAT HALL (116) 2073 SF

COST ALTERNATE FOR 180" INSWING GLAZED DOORS TO BOAT HALL SOUTH ELEVATION.



MAIN LEVEL PLAN
SCALE: 1/4" = 1'-0"

OLSON KUNDIG ARCHITECTS
199 South Jackson Street, 6th Floor, Seattle, WA 98104 USA. T: +1 206 624 5870 F: +1 206 624 3720 www.olsonkundigarchitects.com

PROJECT:
THE CENTER FOR WOODEN BOATS
1010 VALLEY STREET, SEATTLE, WA 98109

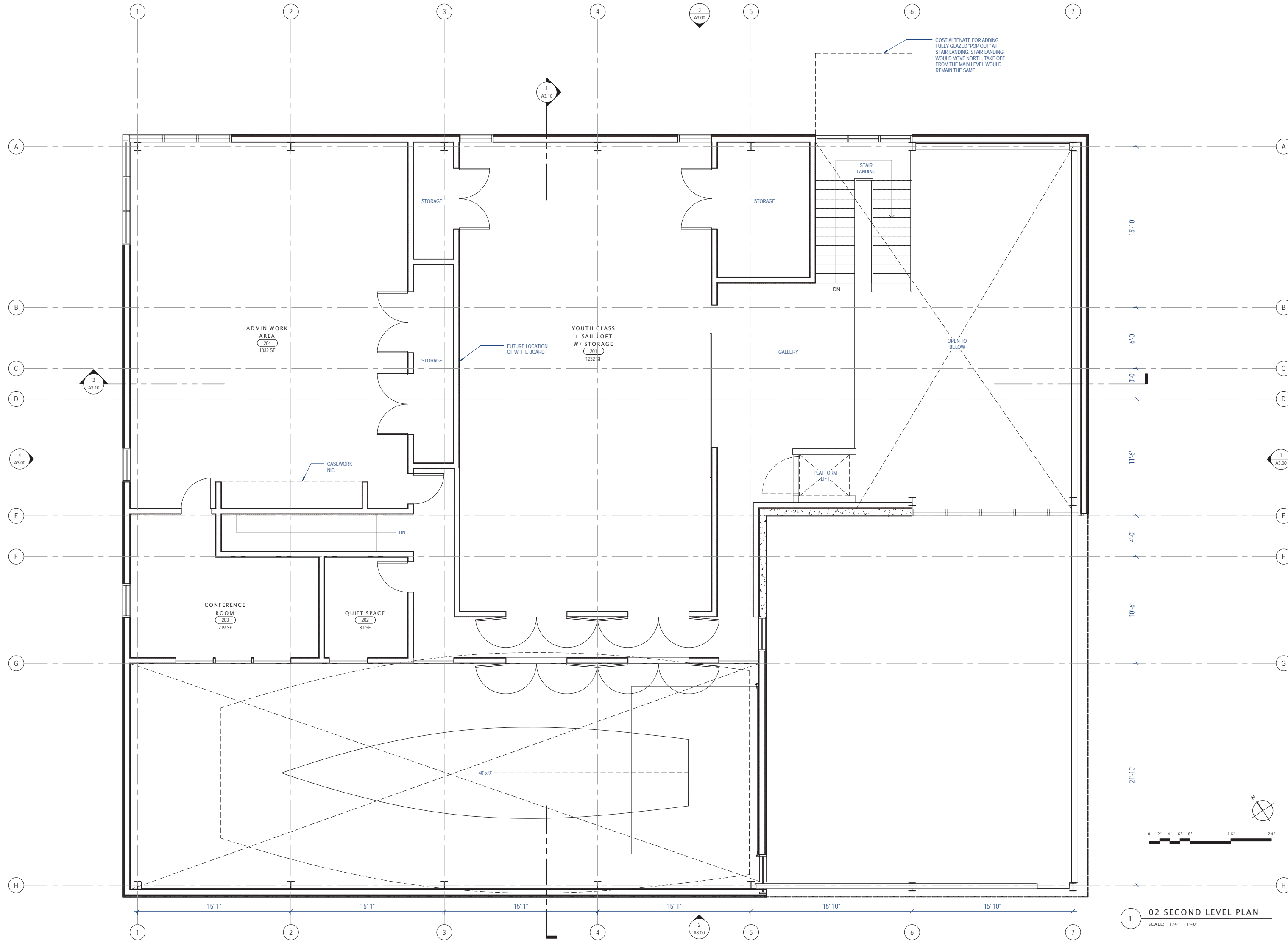
principal architect: TK
project manager: SR
drawn by: AM
Author
checked by:
job no.: 12061
date: 06-18-2013

revisions:
no. date by

NOT FOR CONSTRUCTION
70% SCHEMATIC DESIGN
REVISED PRICING SET
06-18-2013

MAIN LEVEL PLAN
A2.10

Client: Project 12061, 06/18/2013, Approved



COST ALTERNATE FOR ADDING FULLY GLAZED "POP OUT" AT STAIR LANDING. STAIR LANDING WOULD MOVE NORTH, TAKE OFF FROM THE MAIN LEVEL WOULD REMAIN THE SAME.

principal architect TK
 project manager SR
 drawn by AM
 checked by
 job no. 12061
 date 06-18-2013

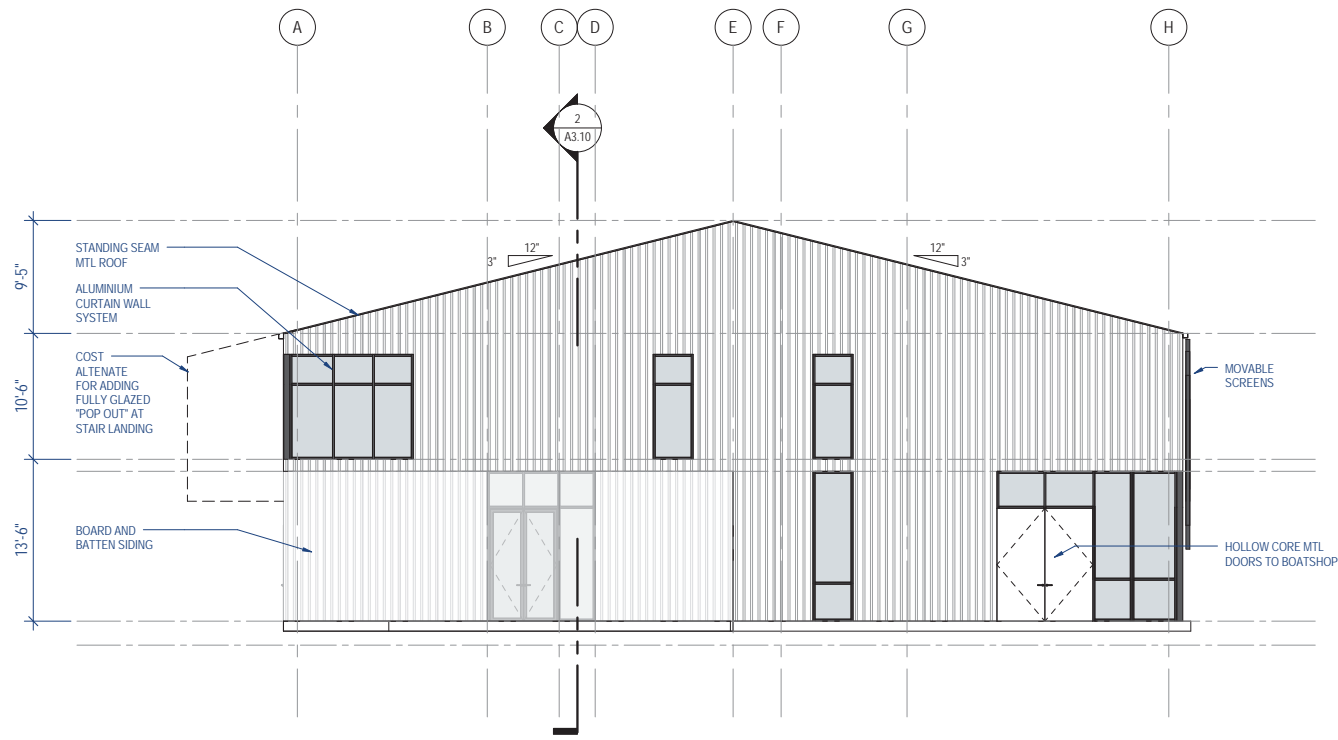
revisions:

 no. date by

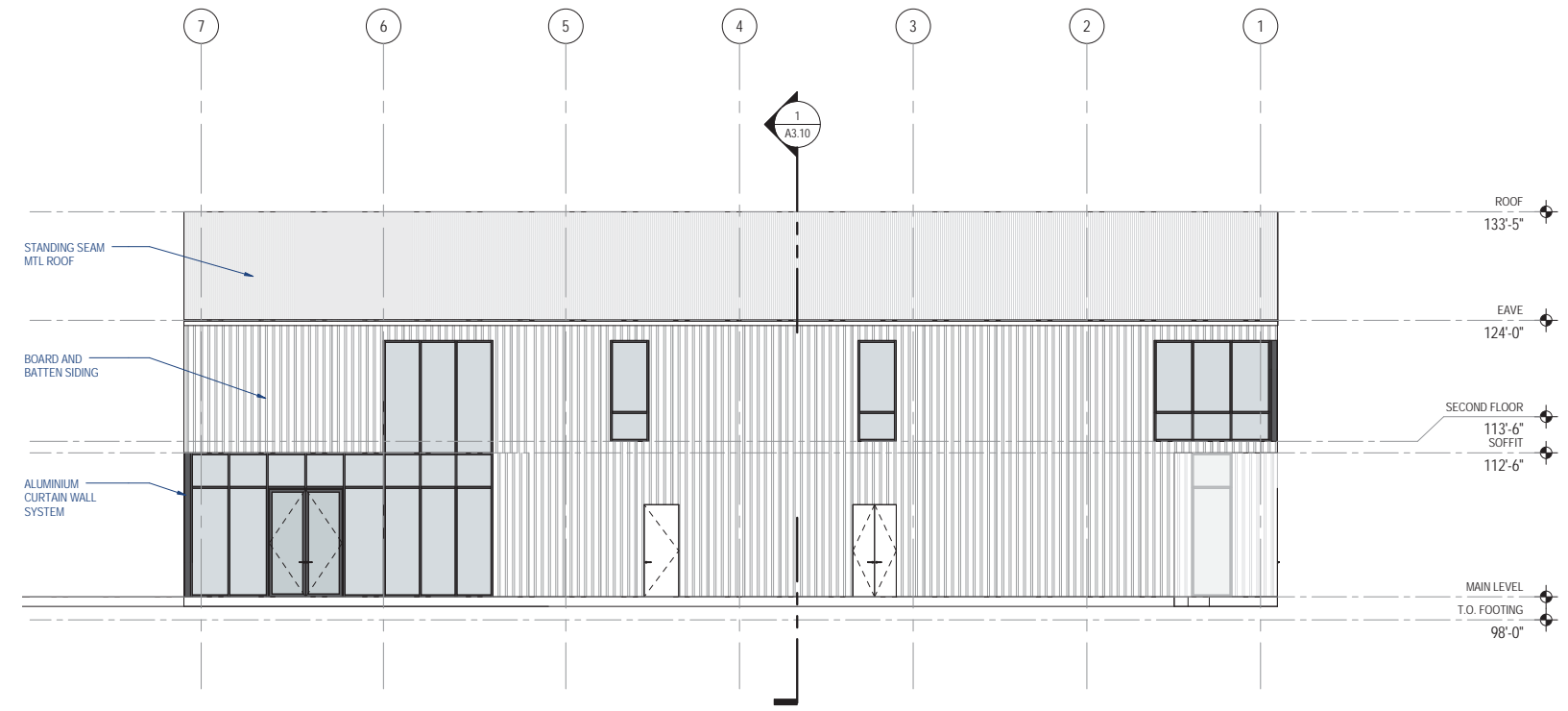
NOT FOR CONSTRUCTION
 70% SCHEMATIC DESIGN
 REVISED PRICING SET
 06-18-2013

02 SECOND LEVEL PLAN
 SCALE: 1/4" = 1'-0"

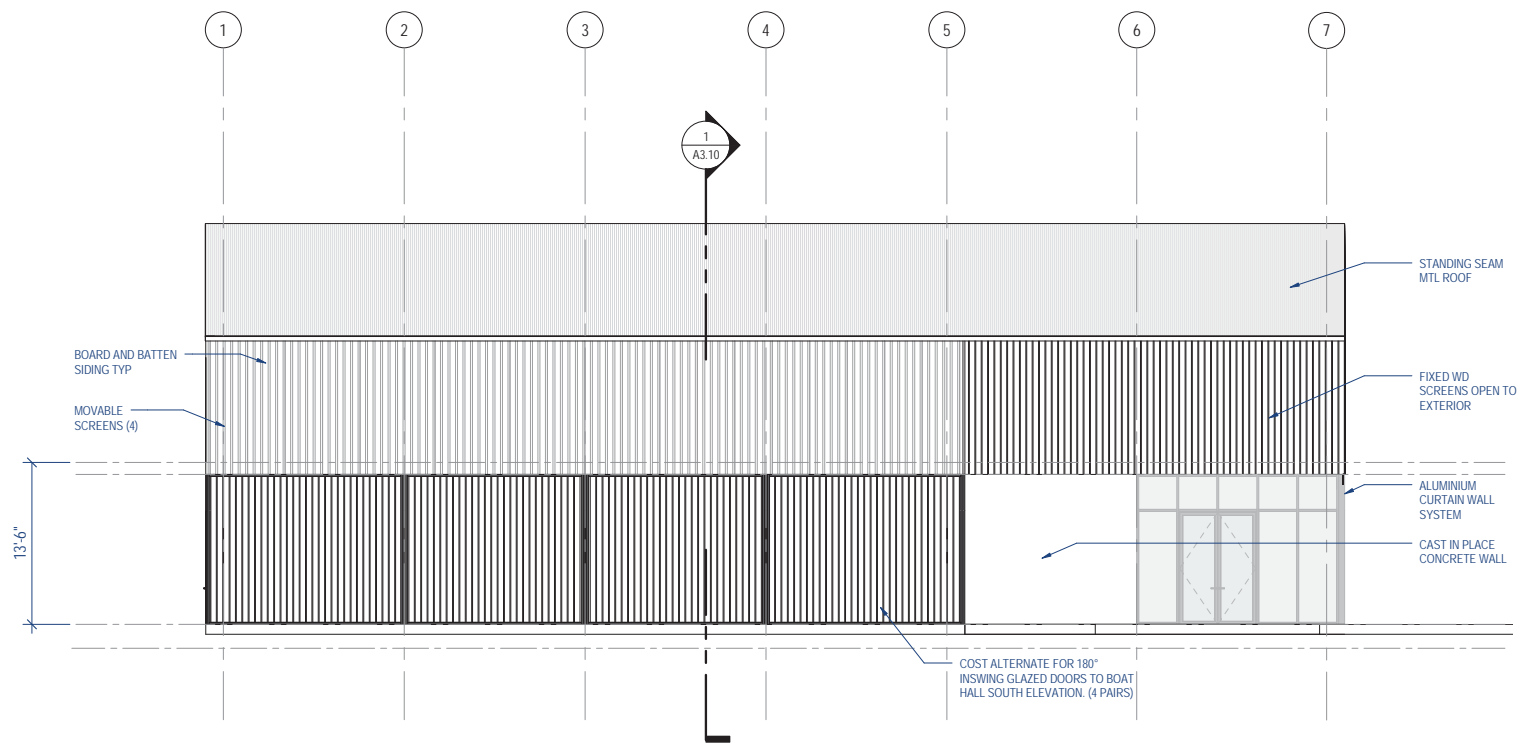
Client: Project 12061, 06/18/2013, Arch: 2013, Approval



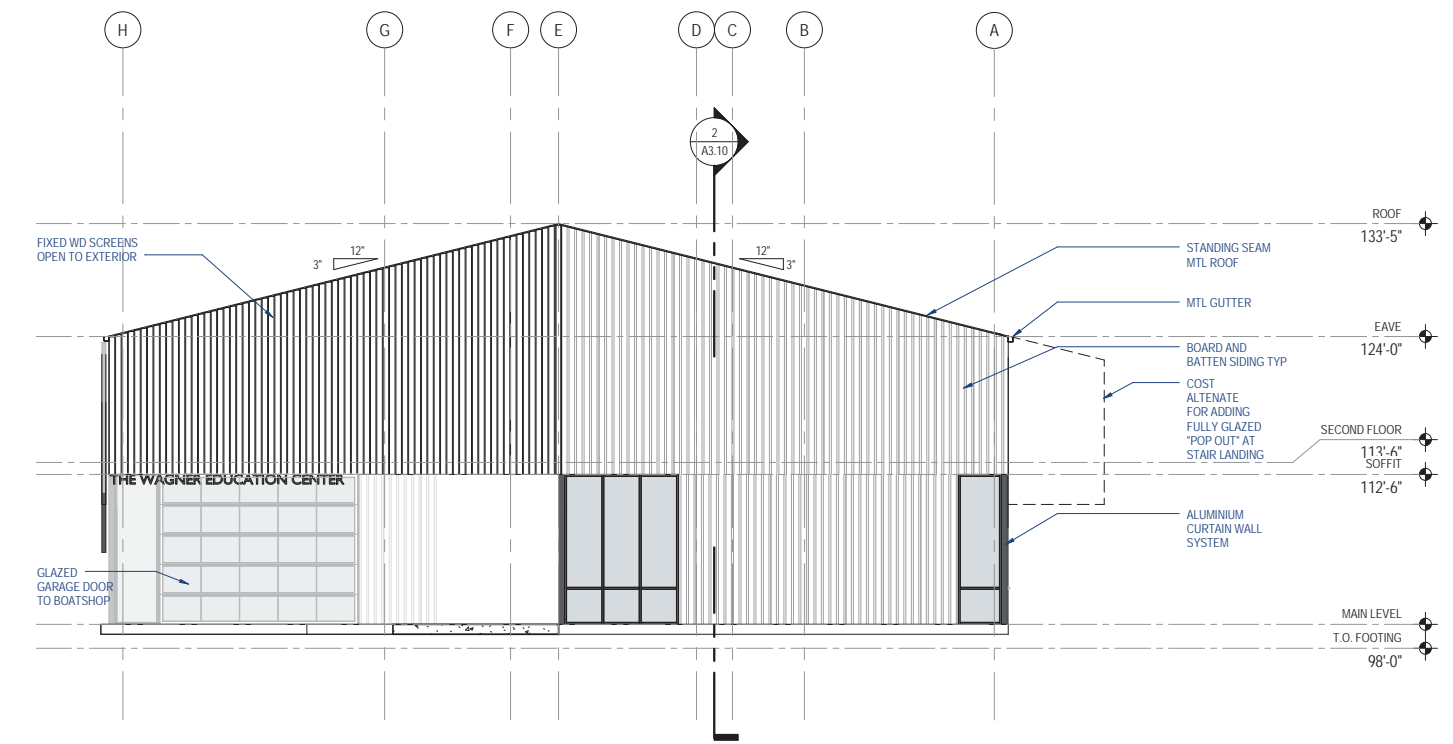
4 WEST ELEVATION
 SCALE: 1/8" = 1'-0"
 0 2' 4' 6' 8' 16' 24'



3 NORTH ELEVATION
 SCALE: 1/8" = 1'-0"
 0 2' 4' 6' 8' 16' 24'



2 SOUTH ELEVATION
 SCALE: 1/8" = 1'-0"
 0 2' 4' 6' 8' 16' 24'

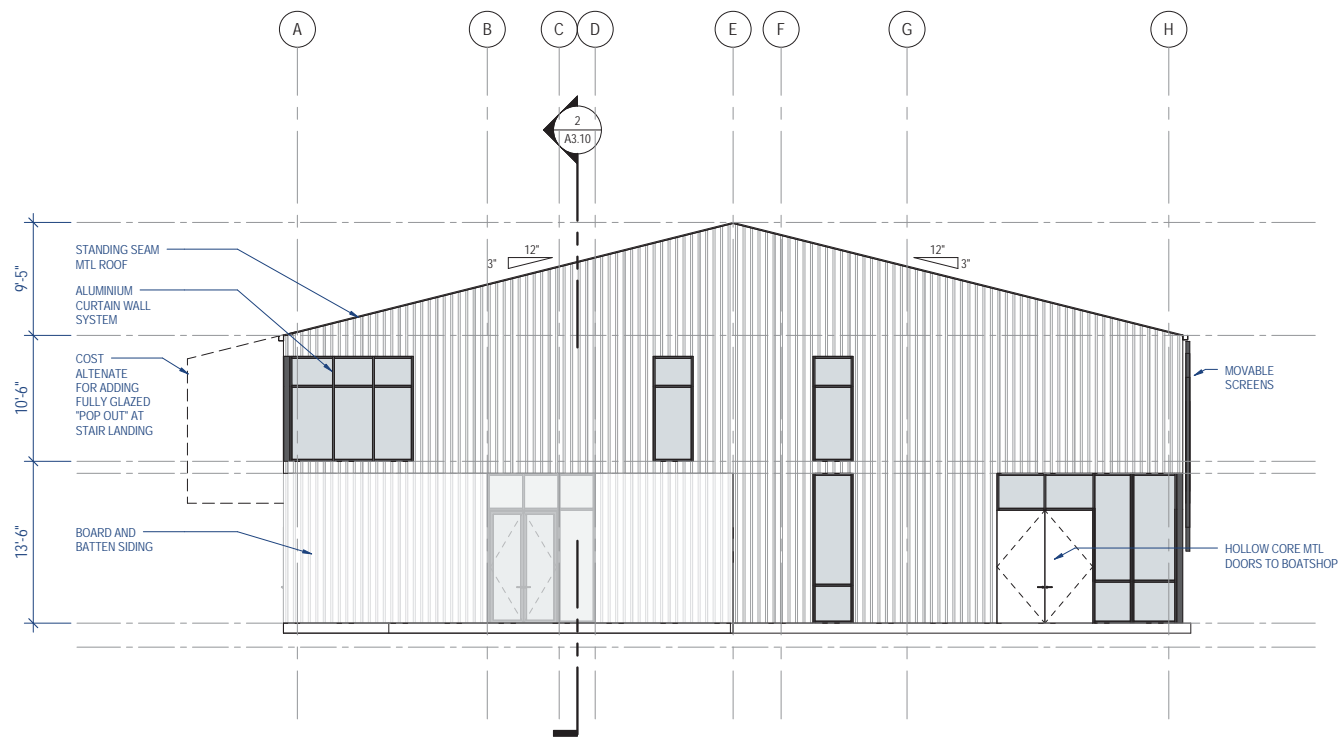


1 EAST ELEVATION
 SCALE: 1/8" = 1'-0"
 0 2' 4' 6' 8' 16' 24'

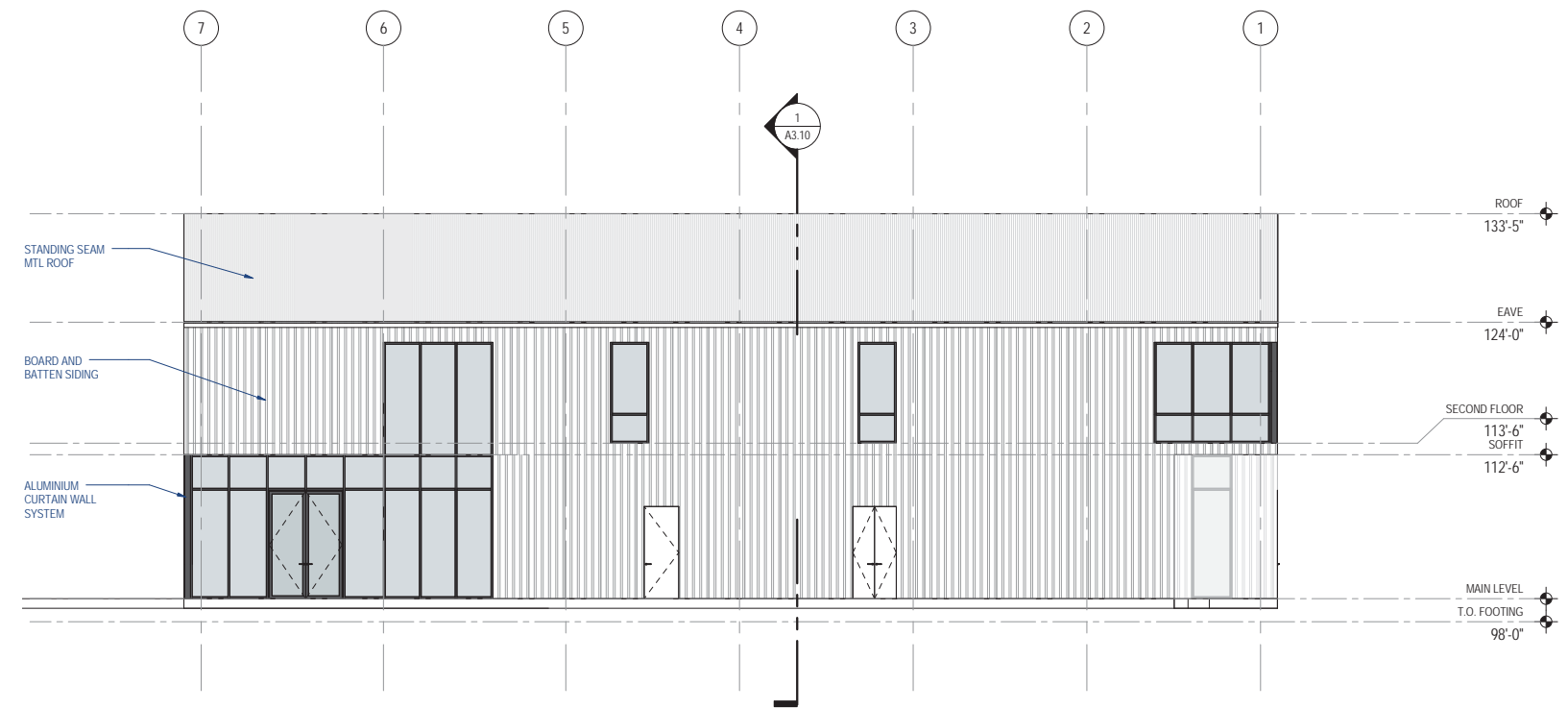
principal architect TK
 project manager SR
 drawn by AM
 checked by
 job no. 12061
 date 06-18-2013

revisions:
 no. date by

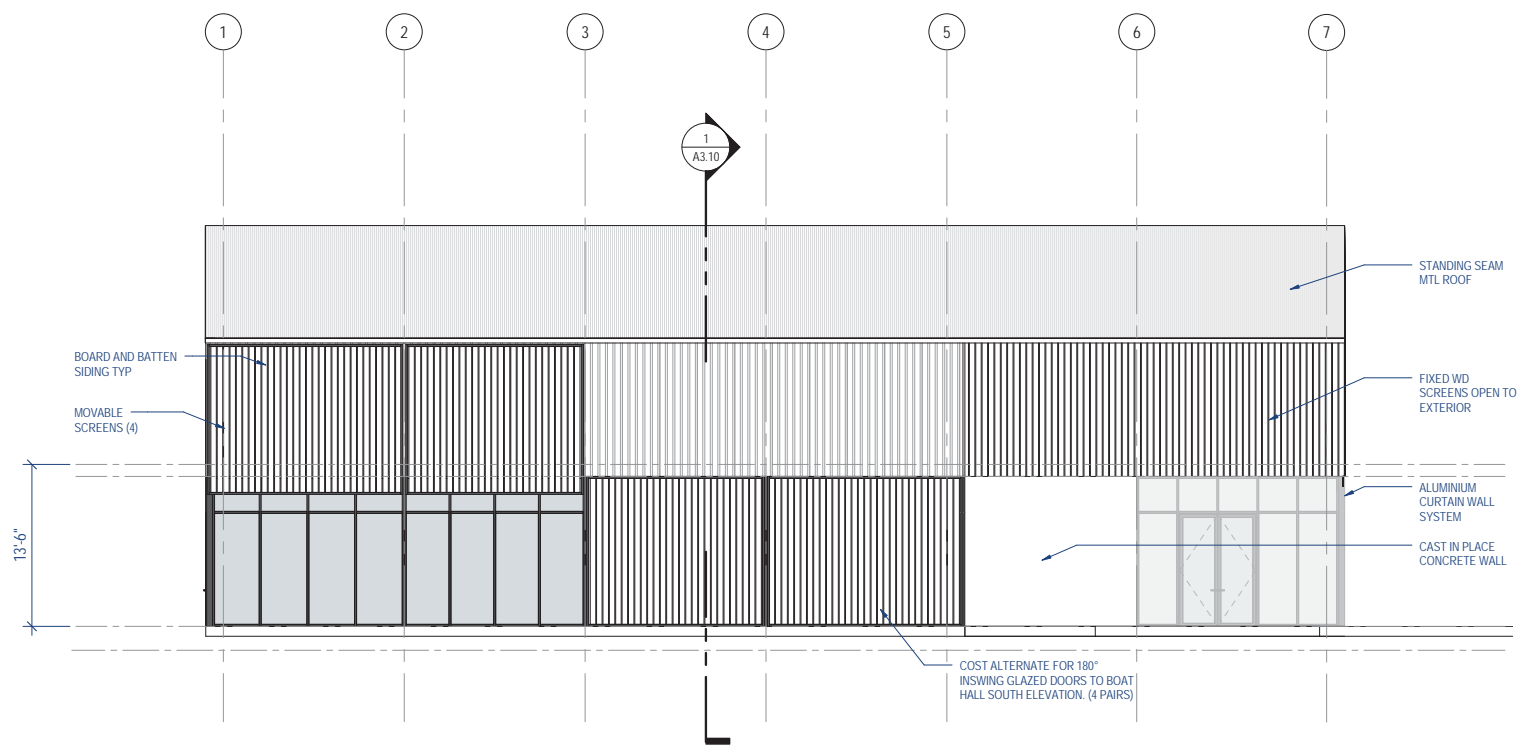
NOT FOR CONSTRUCTION
 70% SCHEMATIC DESIGN
 REVISED PRICING SET
 06-18-2013



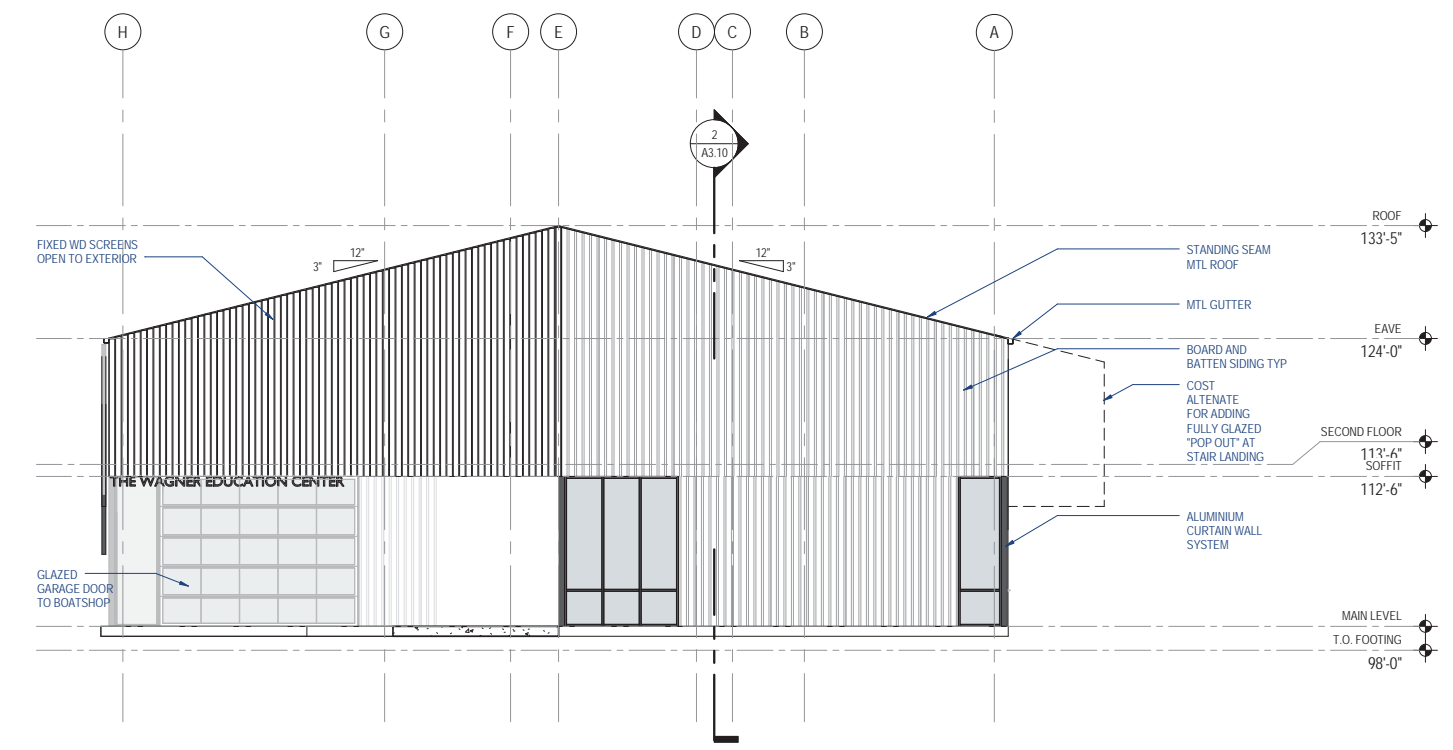
4 WEST ELEVATION
 SCALE: 1/8" = 1'-0"
 0 2' 4' 6' 8' 16' 24'



3 NORTH ELEVATION
 SCALE: 1/8" = 1'-0"
 0 2' 4' 6' 8' 16' 24'



2 SOUTH ELEVATION
 SCALE: 1/8" = 1'-0"
 0 2' 4' 6' 8' 16' 24'

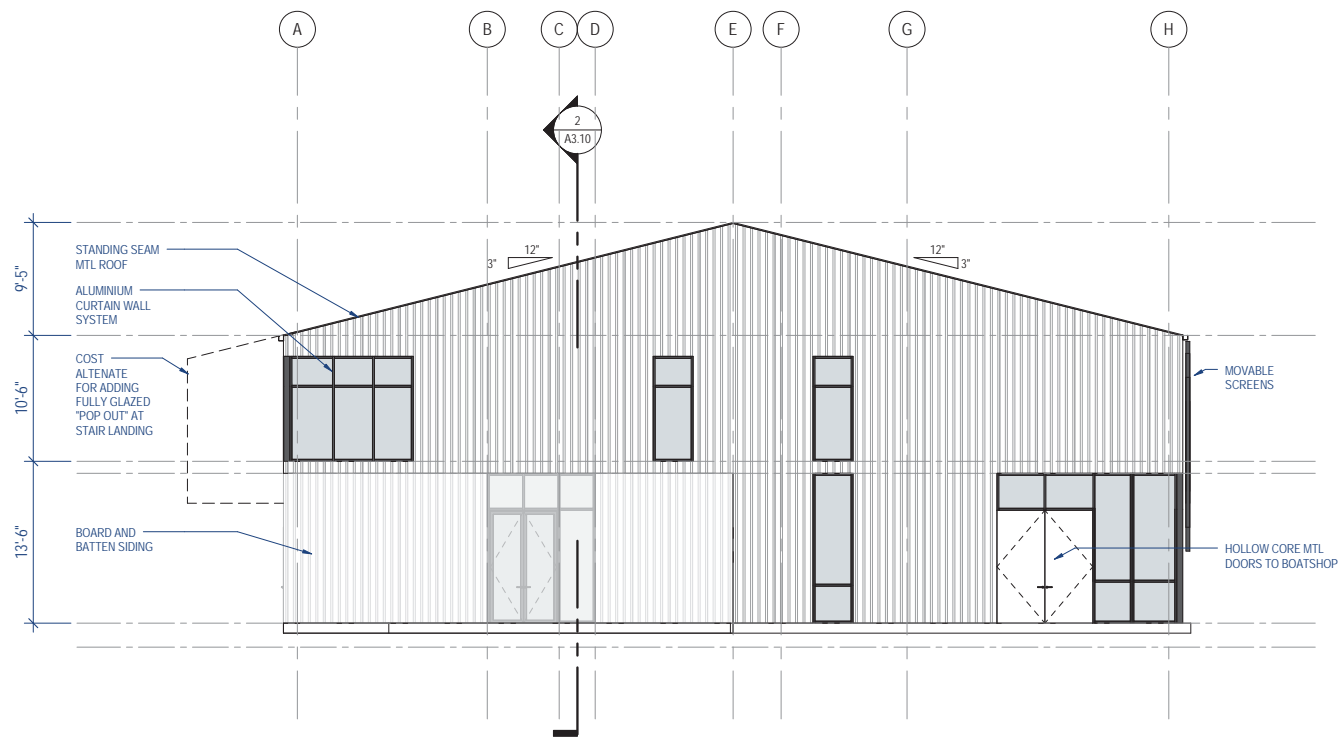


1 EAST ELEVATION
 SCALE: 1/8" = 1'-0"
 0 2' 4' 6' 8' 16' 24'

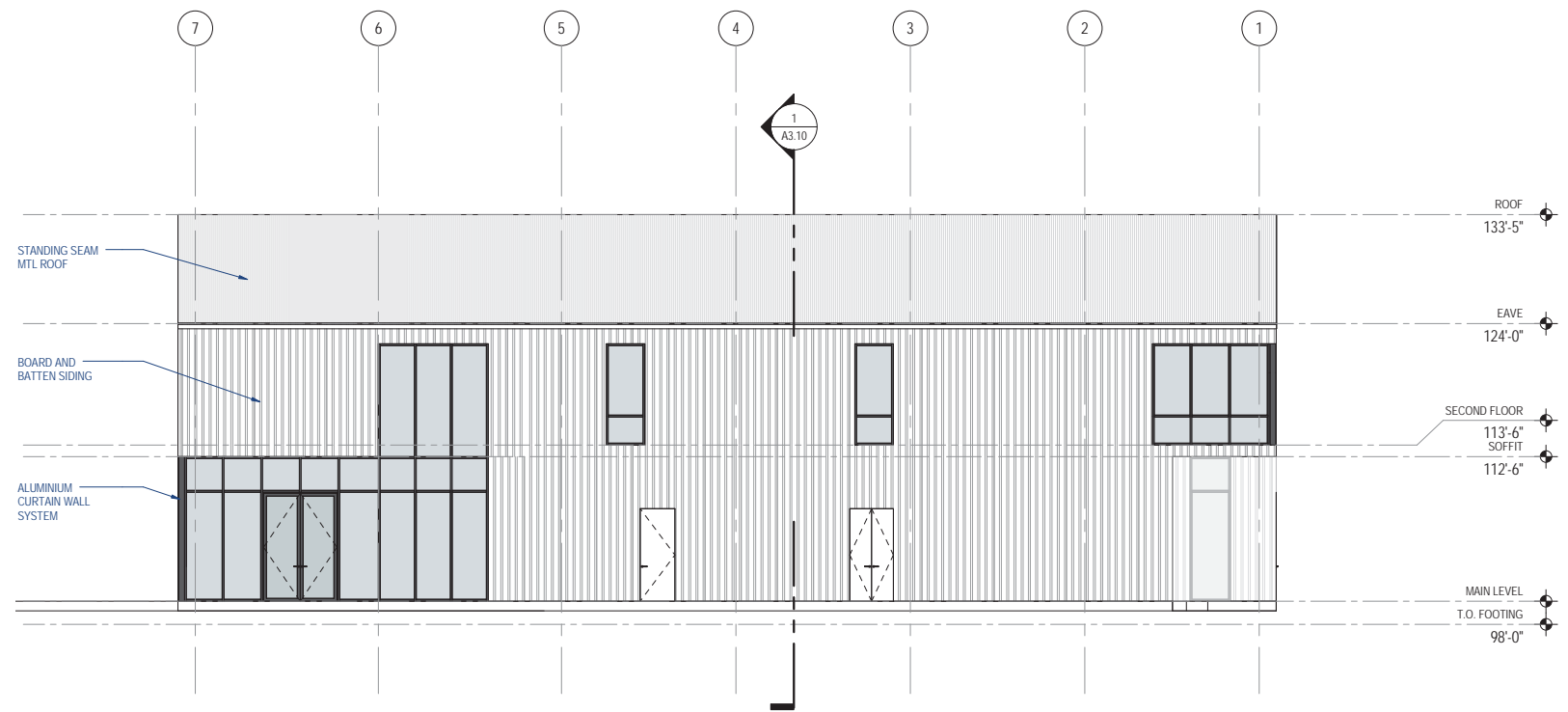
principal architect TK
 project manager SR
 drawn by AM
 checked by
 job no. 12061
 date 06-18-2013

revisions:
 no. date by

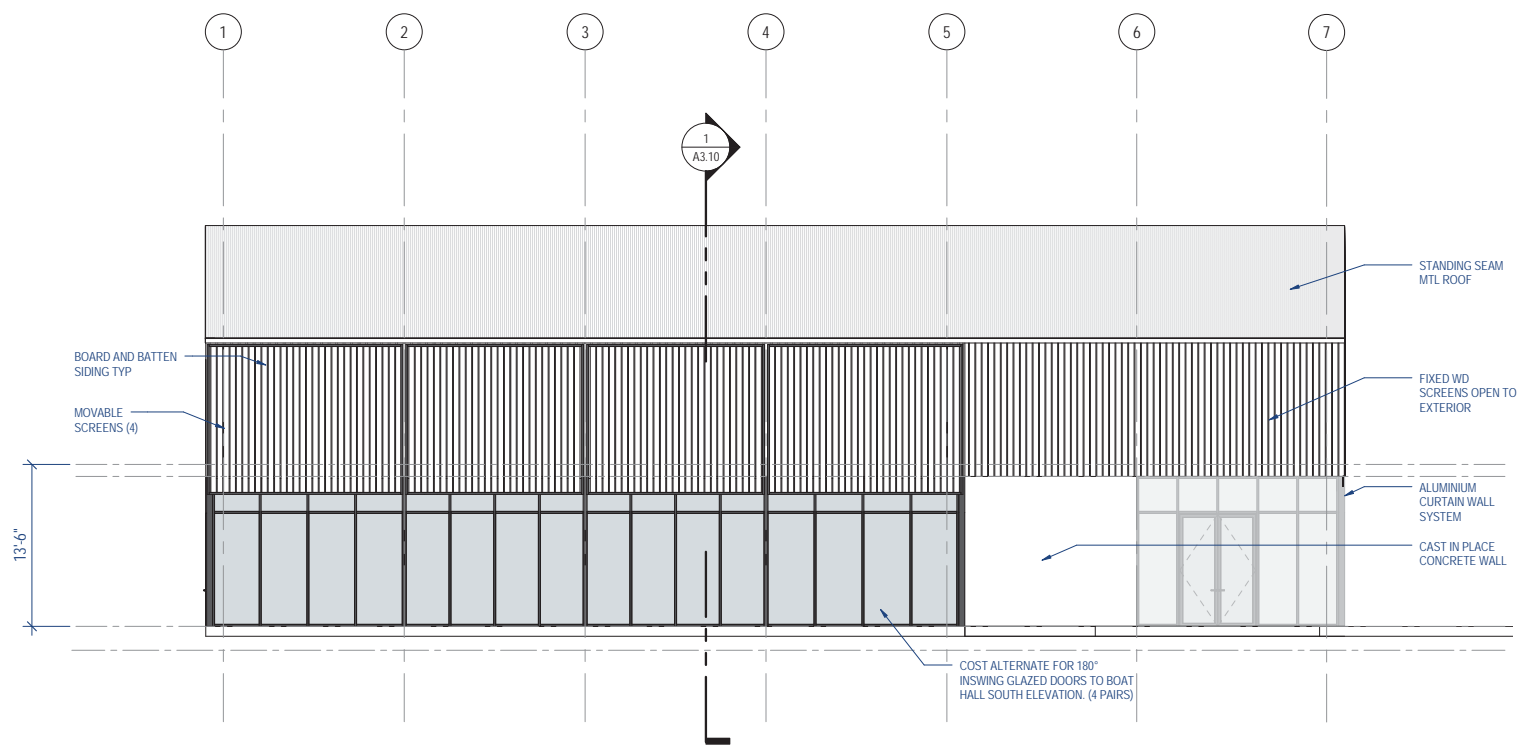
NOT FOR CONSTRUCTION
 70% SCHEMATIC DESIGN
 REVISED PRICING SET
 06-18-2013



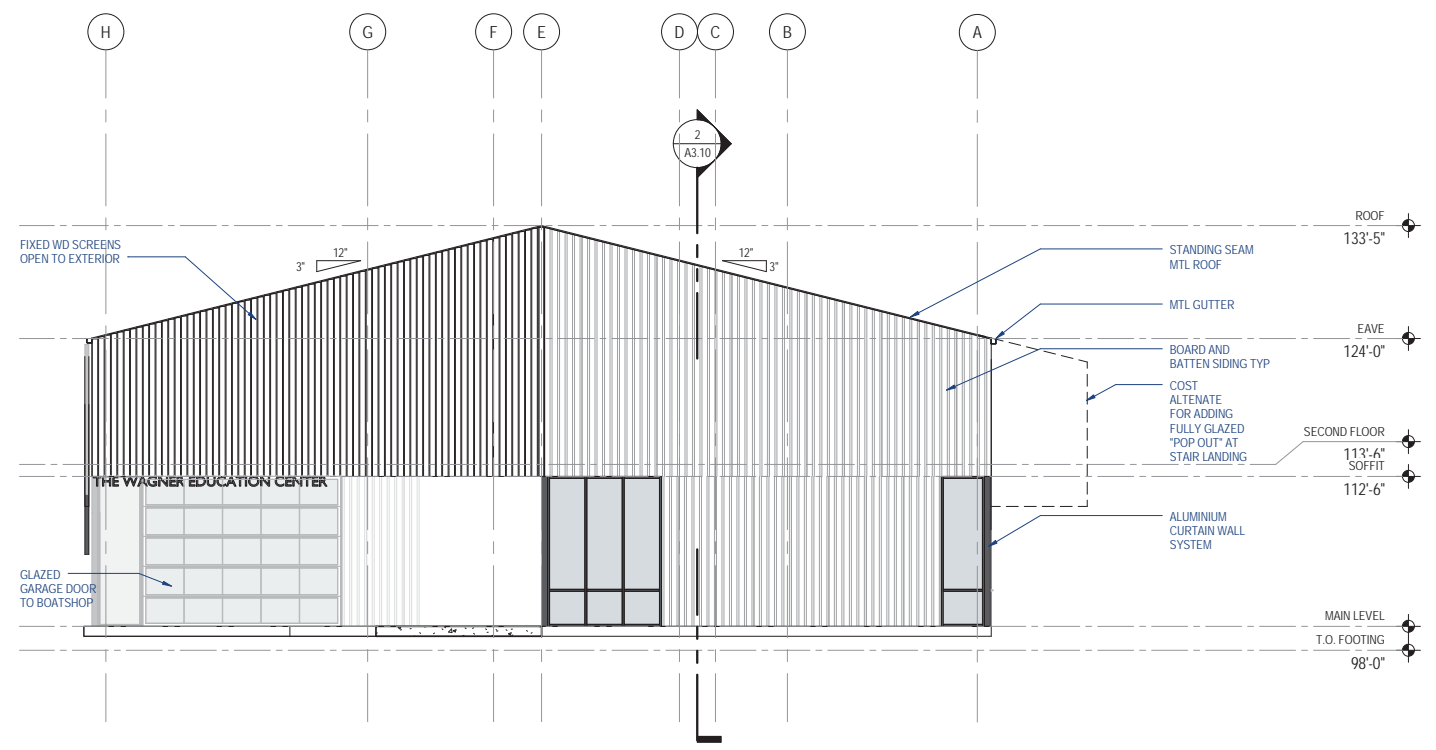
4 WEST ELEVATION
 SCALE: 1/8" = 1'-0"
 0 2' 4' 6' 8' 16' 24'



3 NORTH ELEVATION
 SCALE: 1/8" = 1'-0"
 0 2' 4' 6' 8' 16' 24'



2 SOUTH ELEVATION
 SCALE: 1/8" = 1'-0"
 0 2' 4' 6' 8' 16' 24'



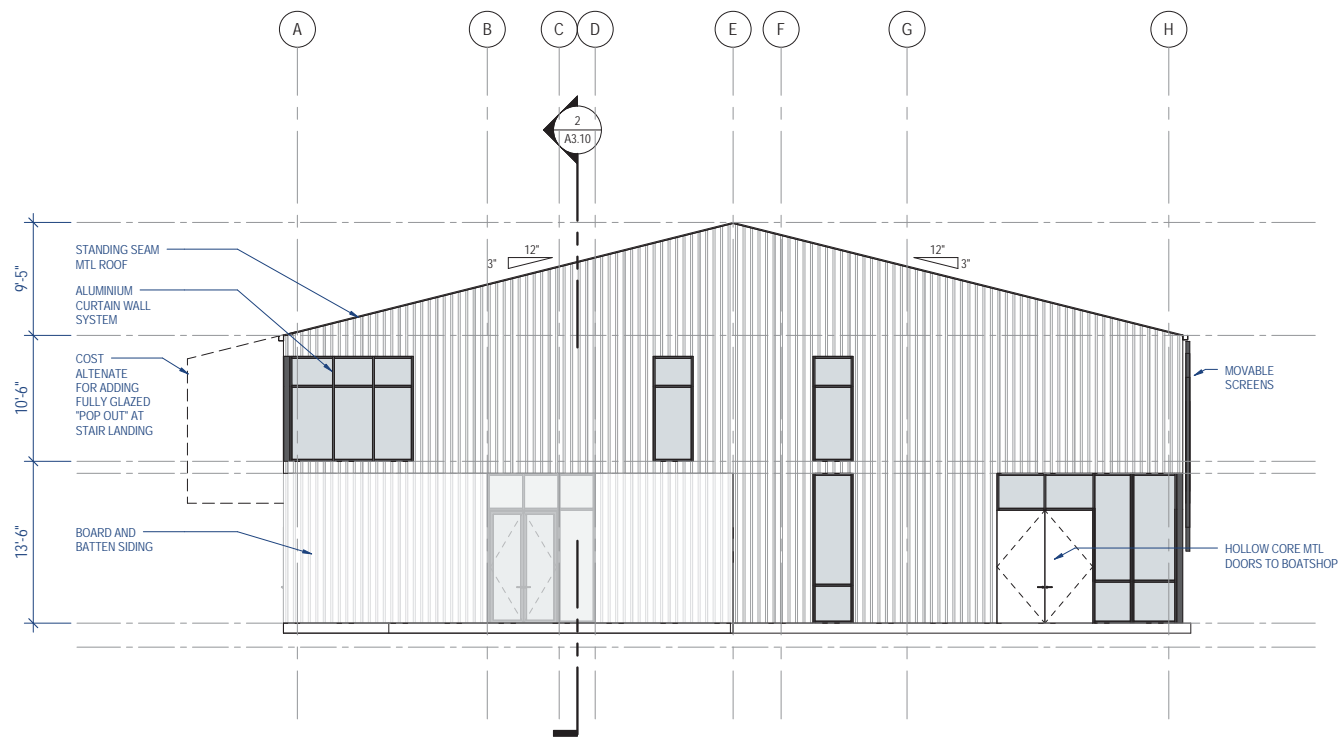
1 EAST ELEVATION
 SCALE: 1/8" = 1'-0"
 0 2' 4' 6' 8' 16' 24'

principal architect TK
 project manager SR
 drawn by AM
 checked by
 job no. 12061
 date 06-18-2013

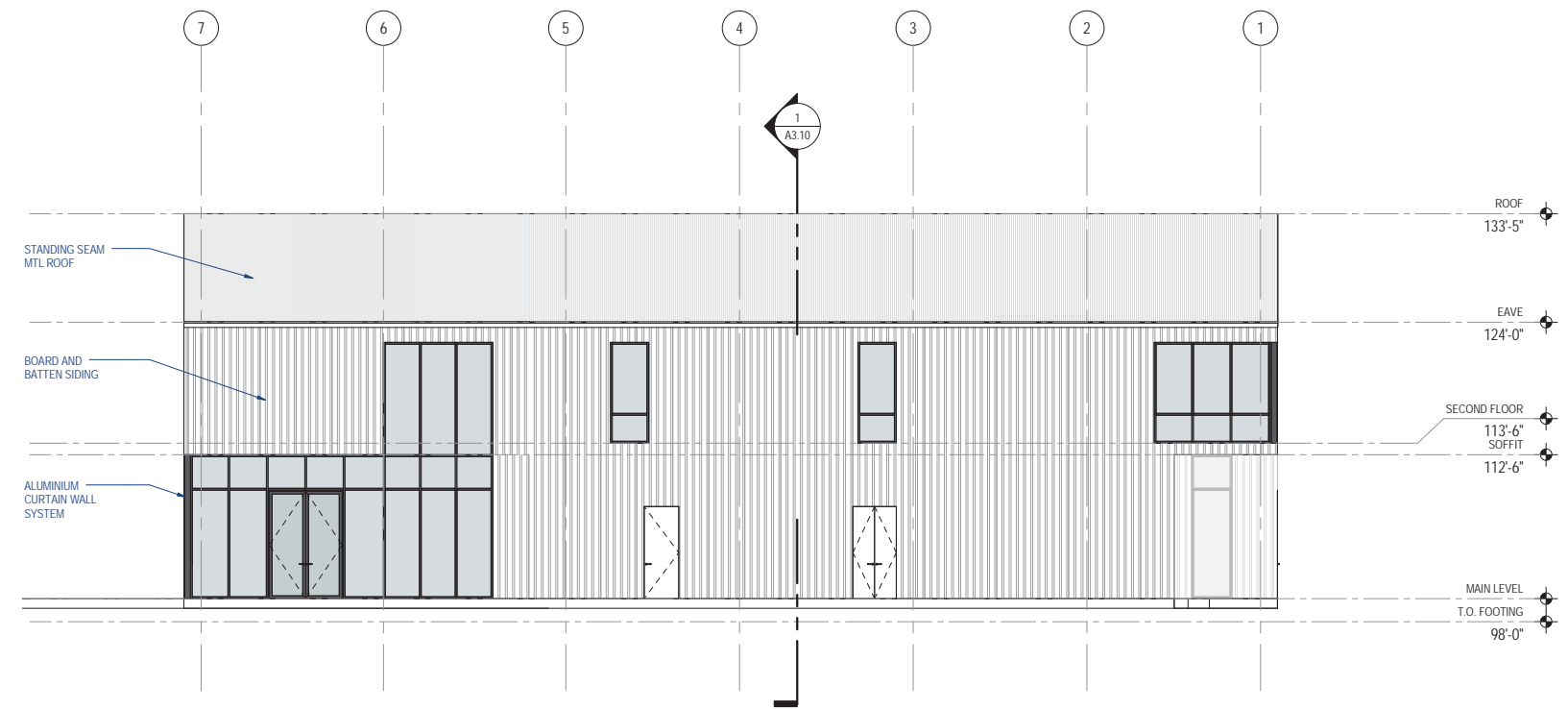
revisions:
 no. date by

NOT FOR CONSTRUCTION
 70% SCHEMATIC DESIGN
 REVISED PRICING SET
 06-18-2013

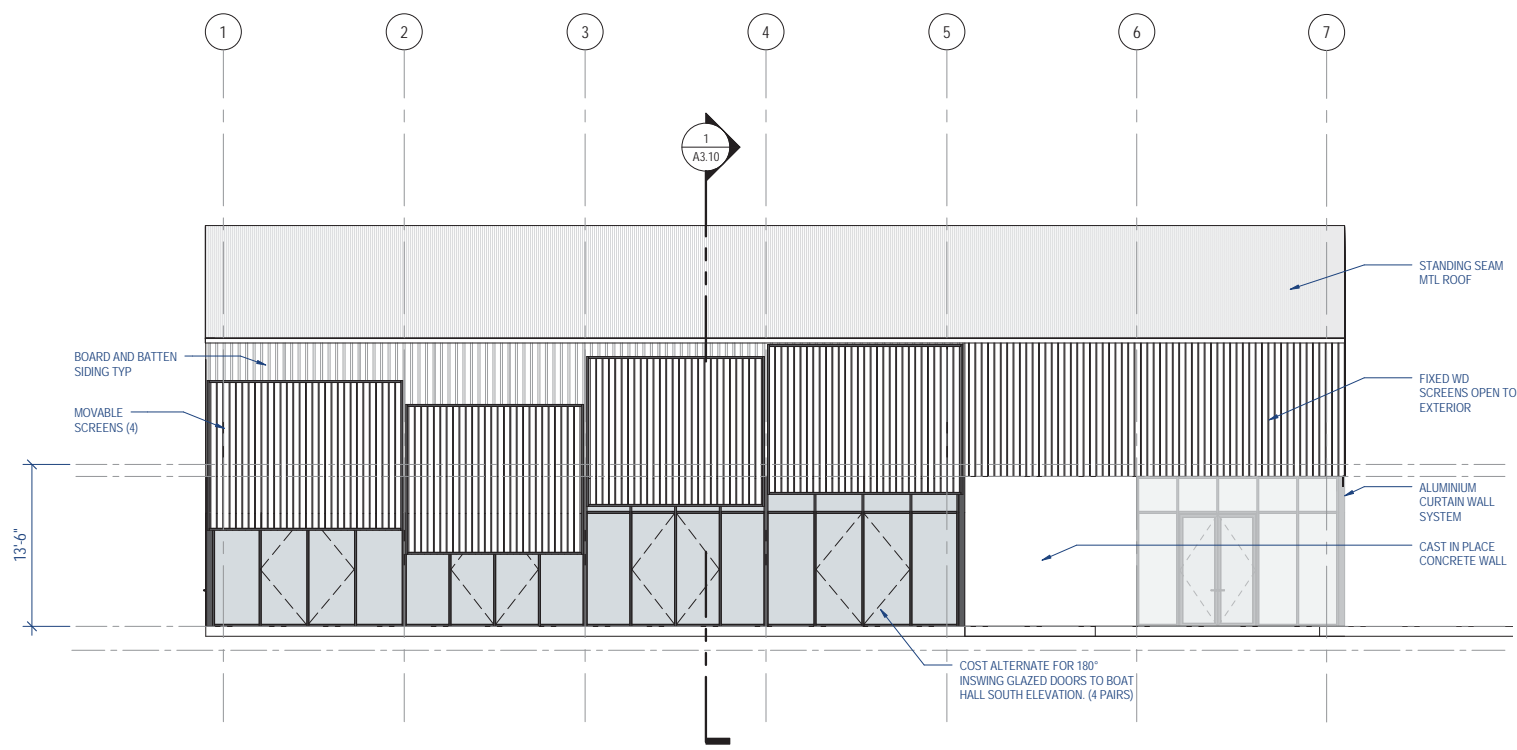
©2013 Olson Kundig Architects, Inc. All Rights Reserved.



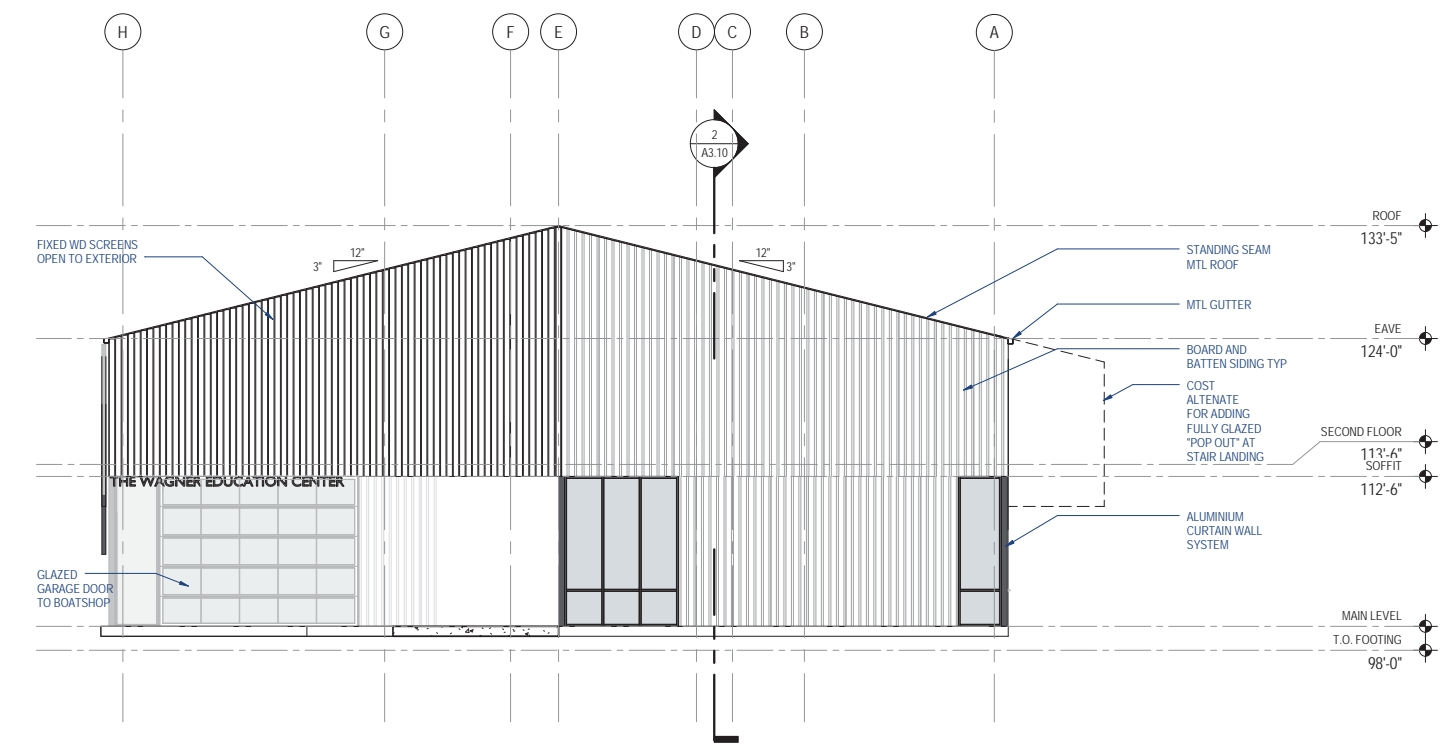
4 WEST ELEVATION
 SCALE: 1/8" = 1'-0"
 0 2' 4' 6' 8' 16' 24'



3 NORTH ELEVATION
 SCALE: 1/8" = 1'-0"
 0 2' 4' 6' 8' 16' 24'



2 SOUTH ELEVATION
 SCALE: 1/8" = 1'-0"
 0 2' 4' 6' 8' 16' 24'



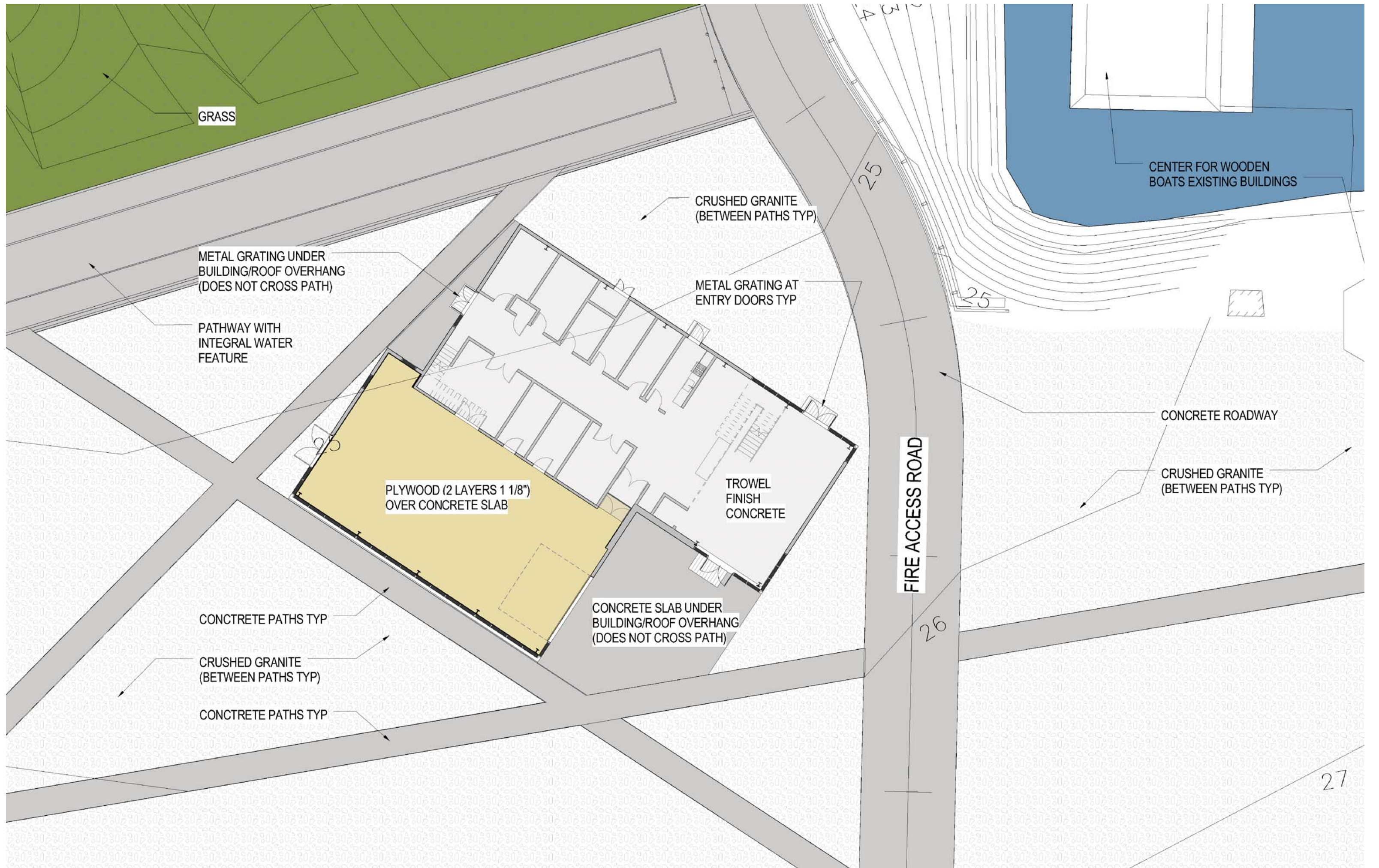
1 EAST ELEVATION
 SCALE: 1/8" = 1'-0"
 0 2' 4' 6' 8' 16' 24'

principal architect TK
 project manager SR
 drawn by AM
 checked by
 job no. 12061
 date 06-18-2013

revisions:
 no. date by

NOT FOR CONSTRUCTION
 70% SCHEMATIC DESIGN
 REVISED PRICING SET
 06-18-2013

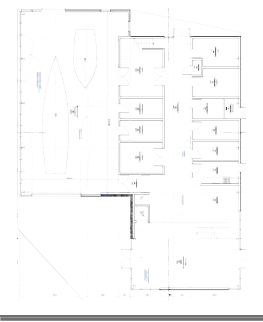
©2013 Olson Kundig Architects, Inc. All Rights Reserved.

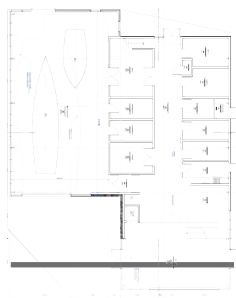


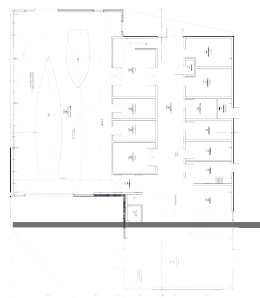


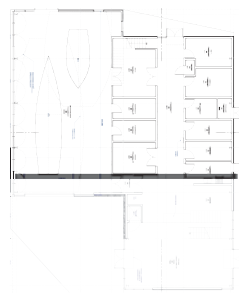
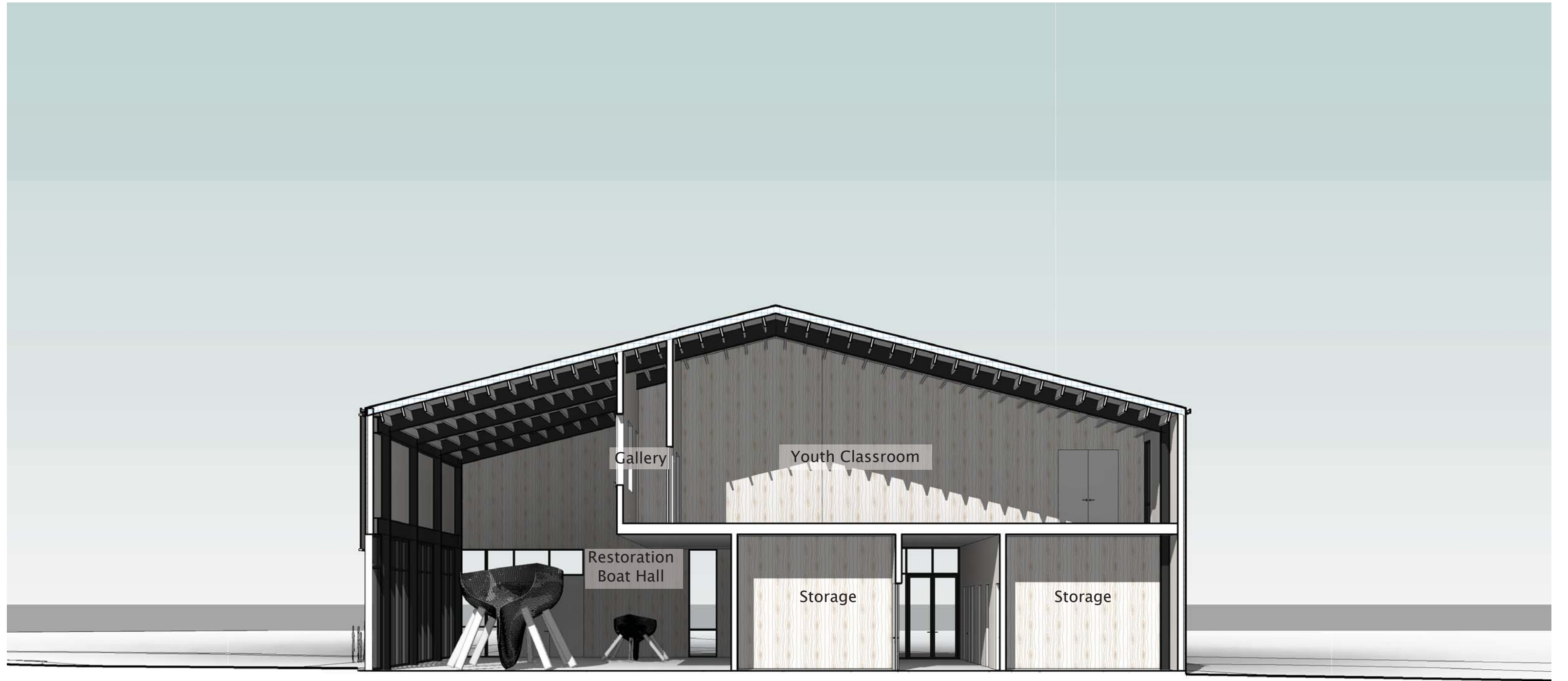


THE WAGNER EDUCATION CENTER











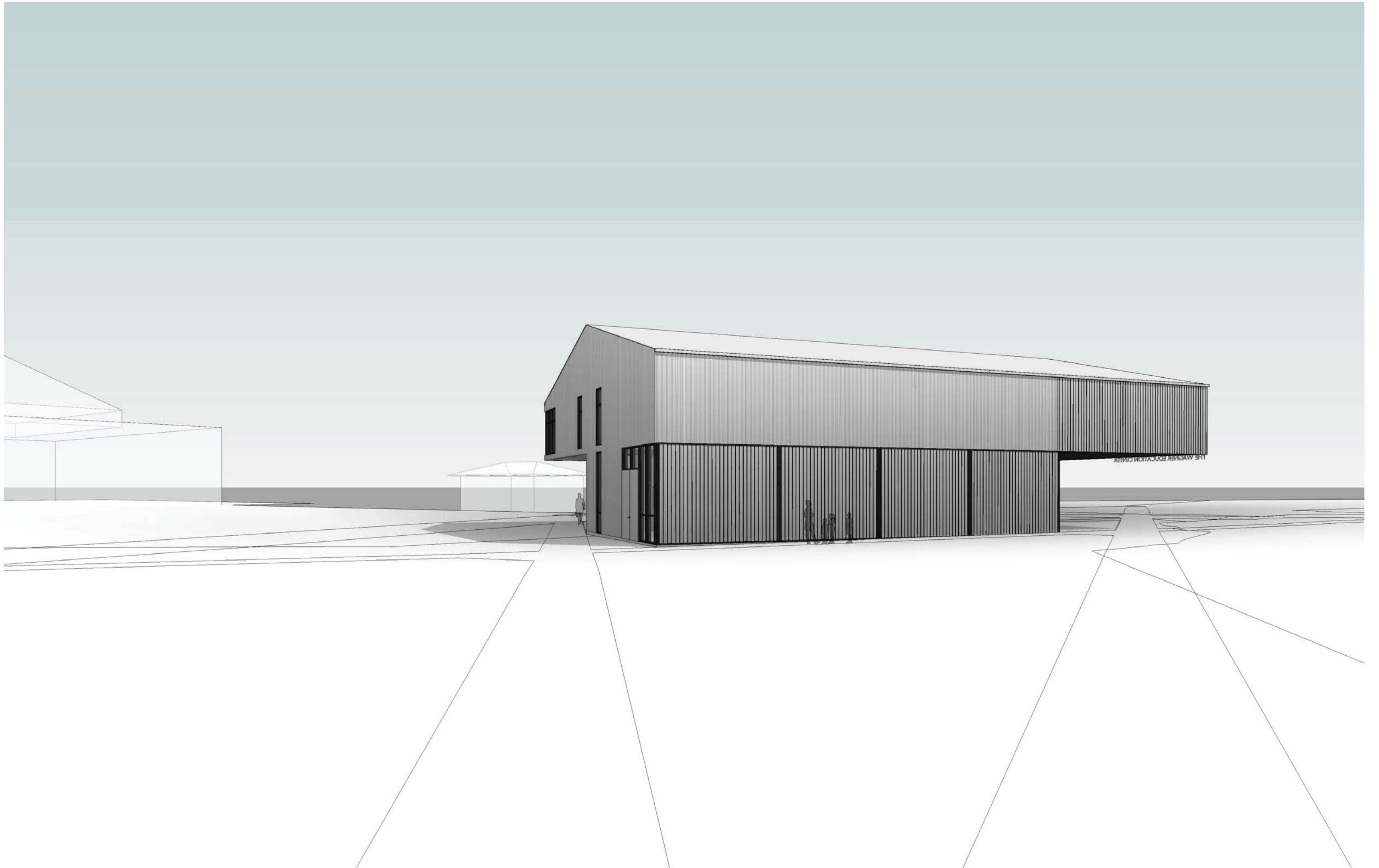




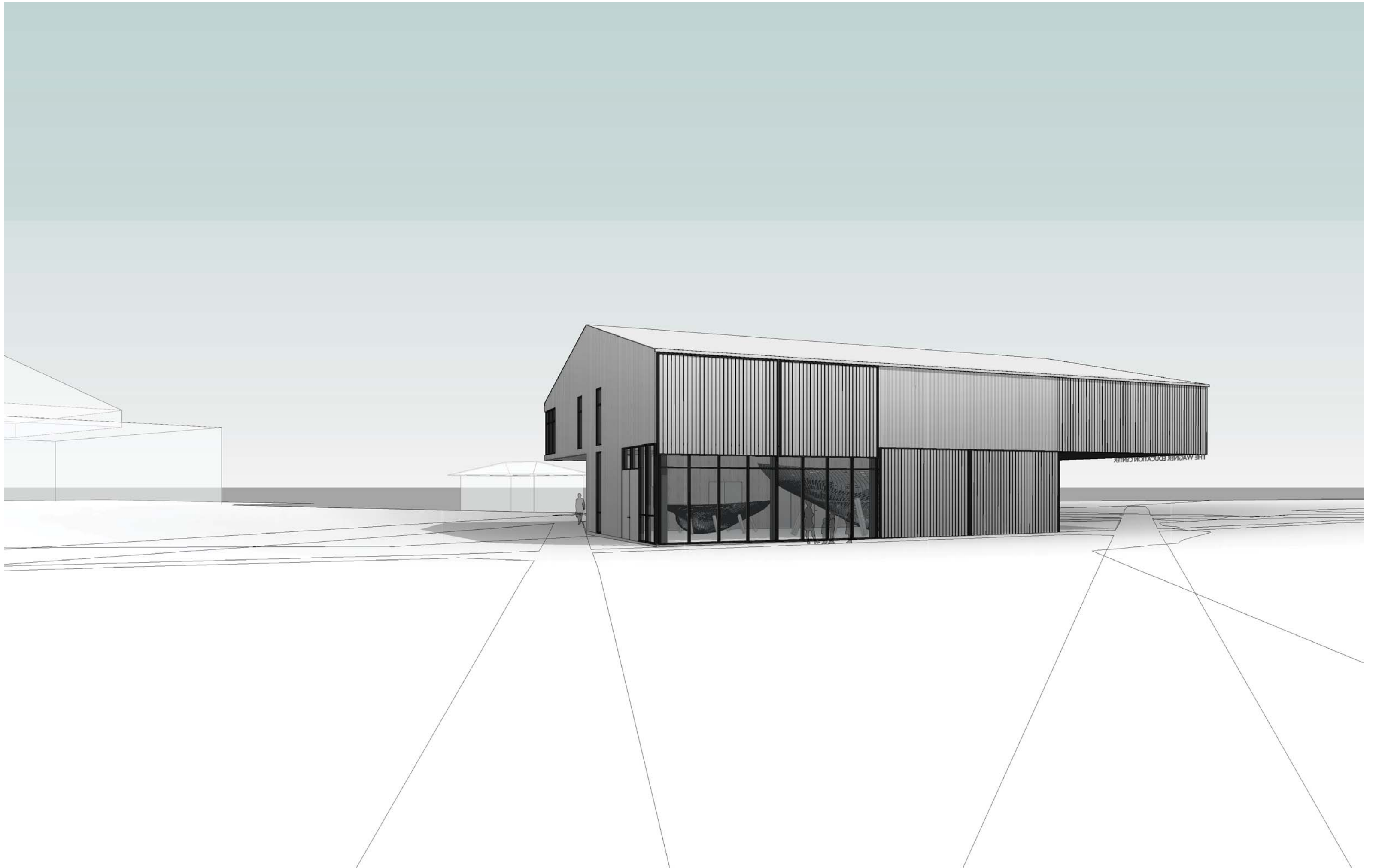
The Wagner Education Center / Center for Wooden Boats / South Lake Union / Seattle WA / View from the Southwest at 4 pm



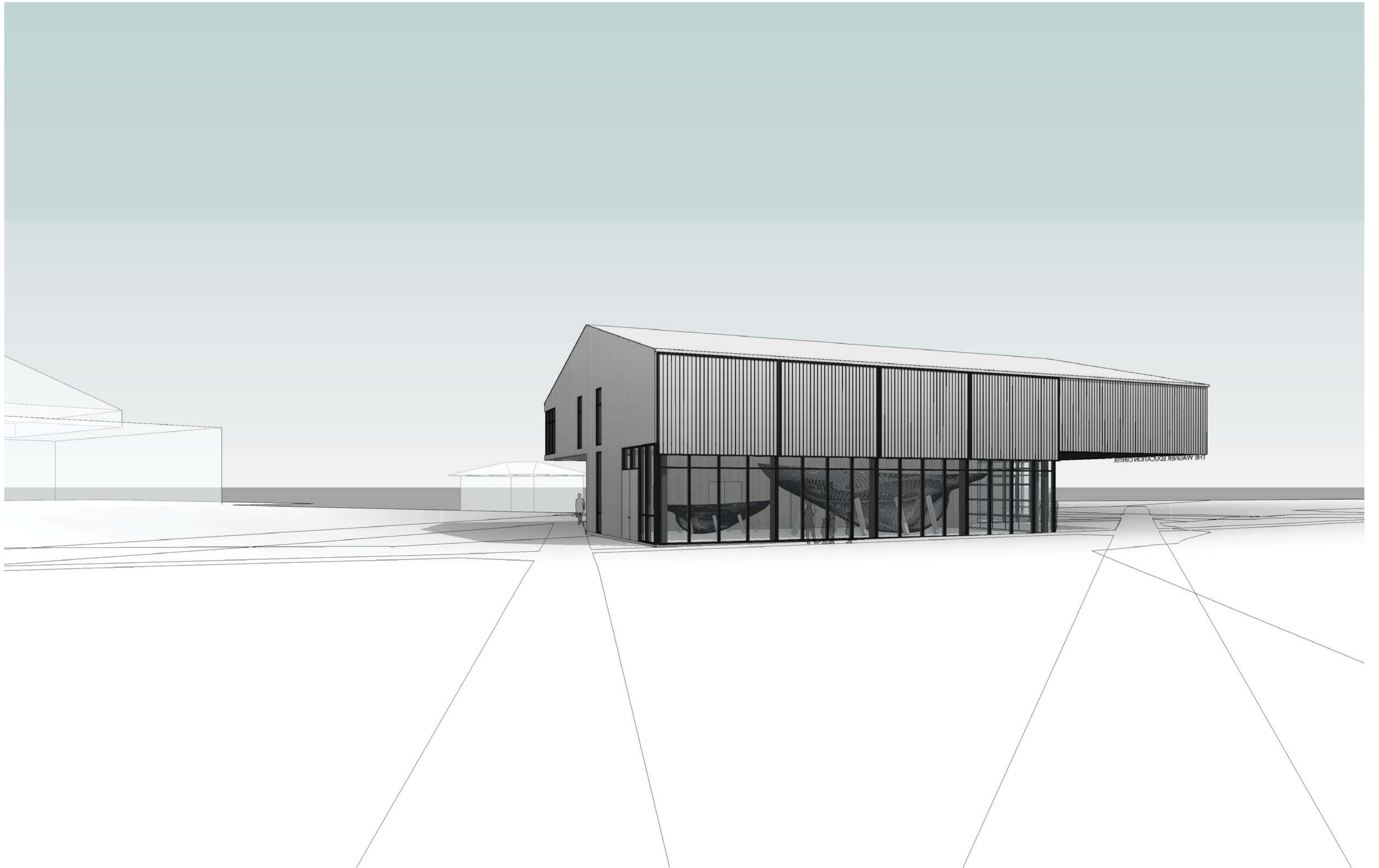
The Wagner Education Center / Center for Wooden Boats / South Lake Union / Seattle WA / View from the Southwest at 8 pm

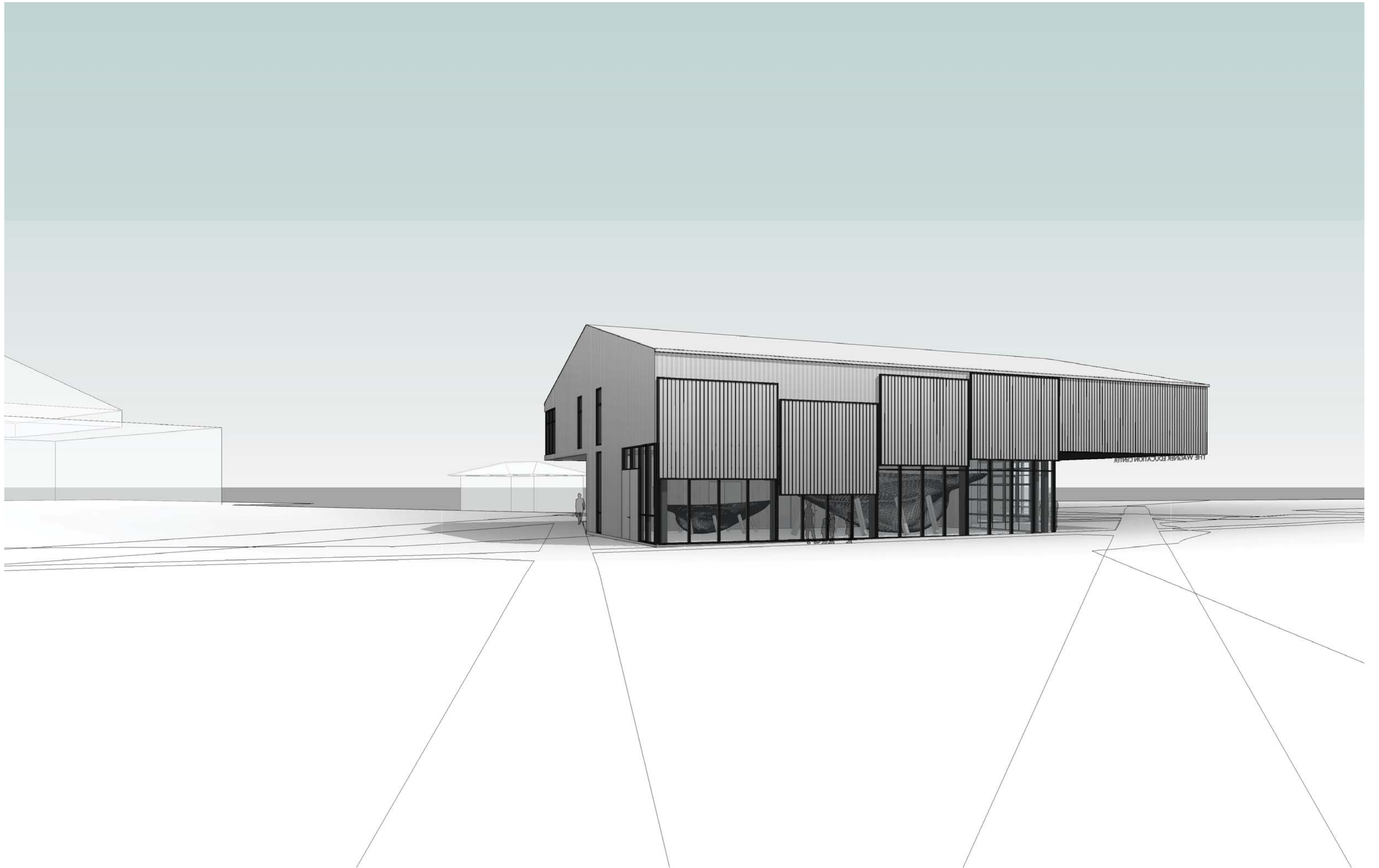


The Wagner Education Center / Center for Wooden Boats / South Lake Union / Seattle WA / View from the Southwest

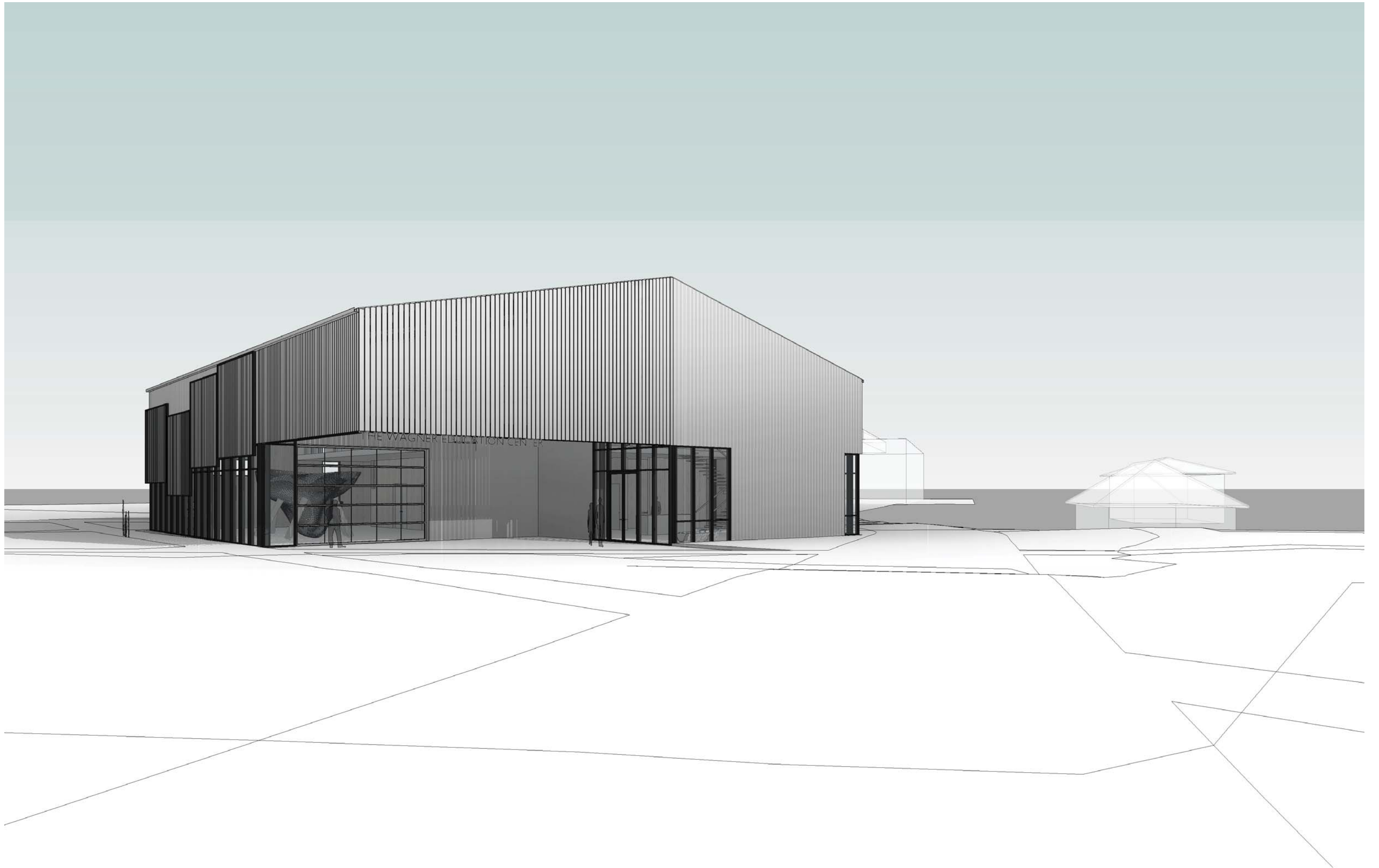


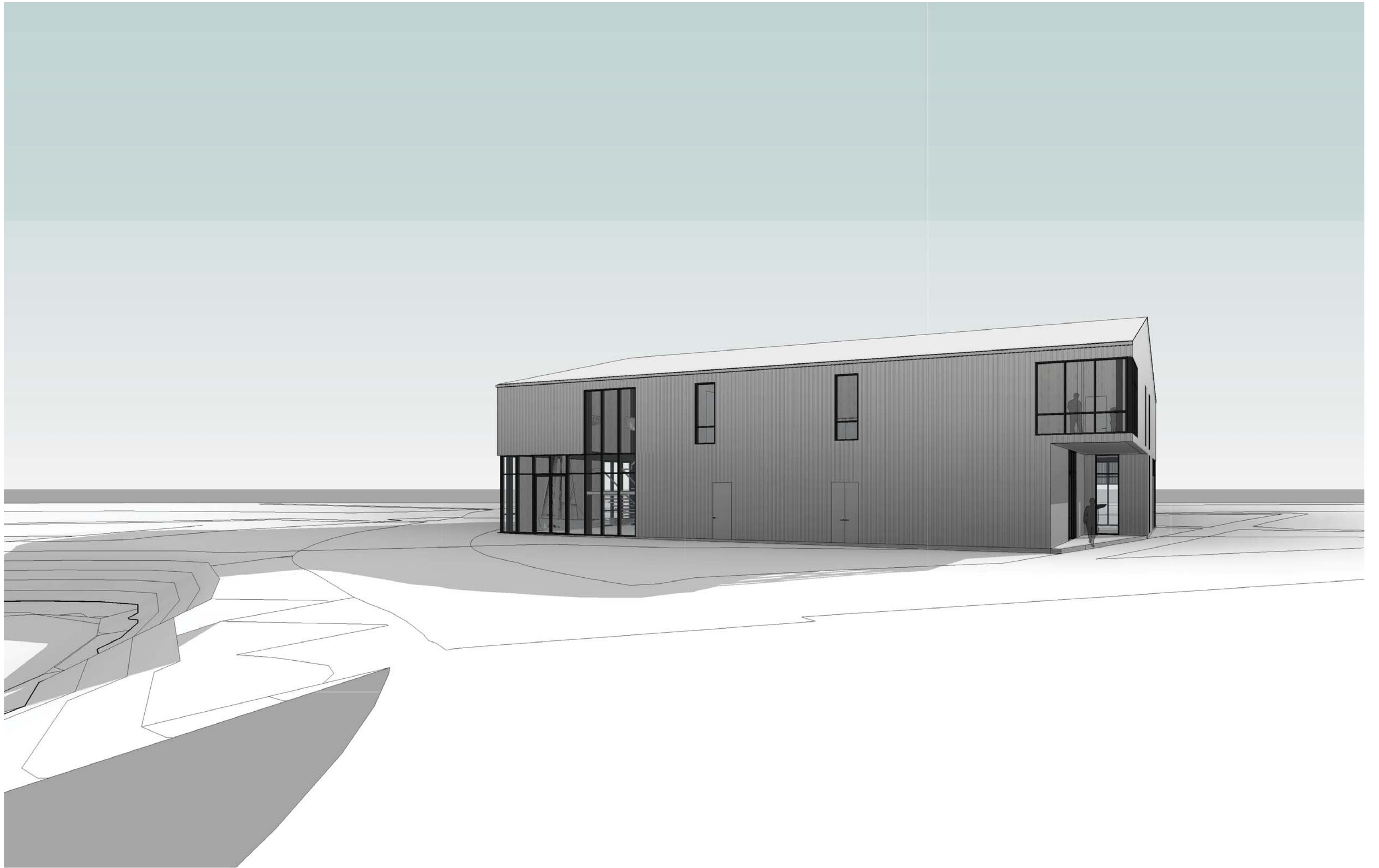
The Wagner Education Center / Center for Wooden Boats / South Lake Union / Seattle WA / View from the Southwest

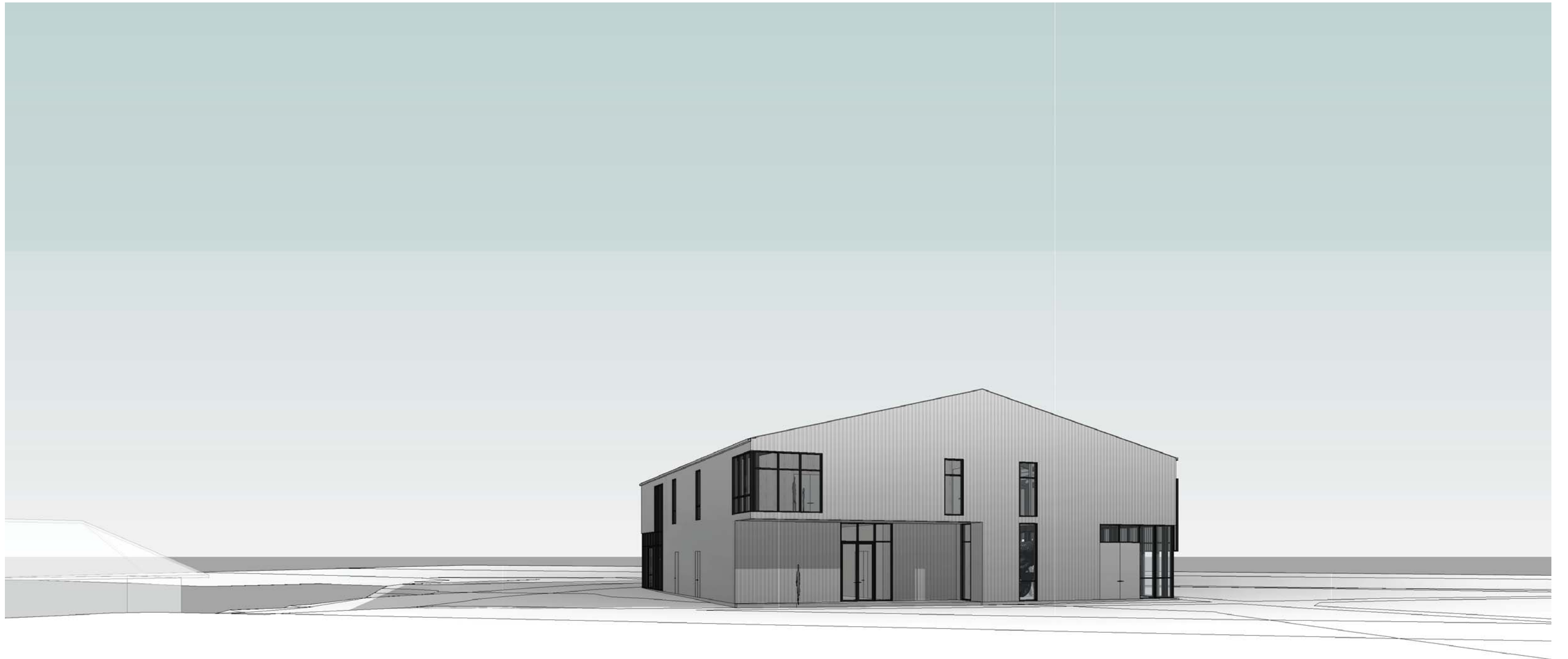




The Wagner Education Center / Center for Wooden Boats / South Lake Union / Seattle WA / View from the Southwest

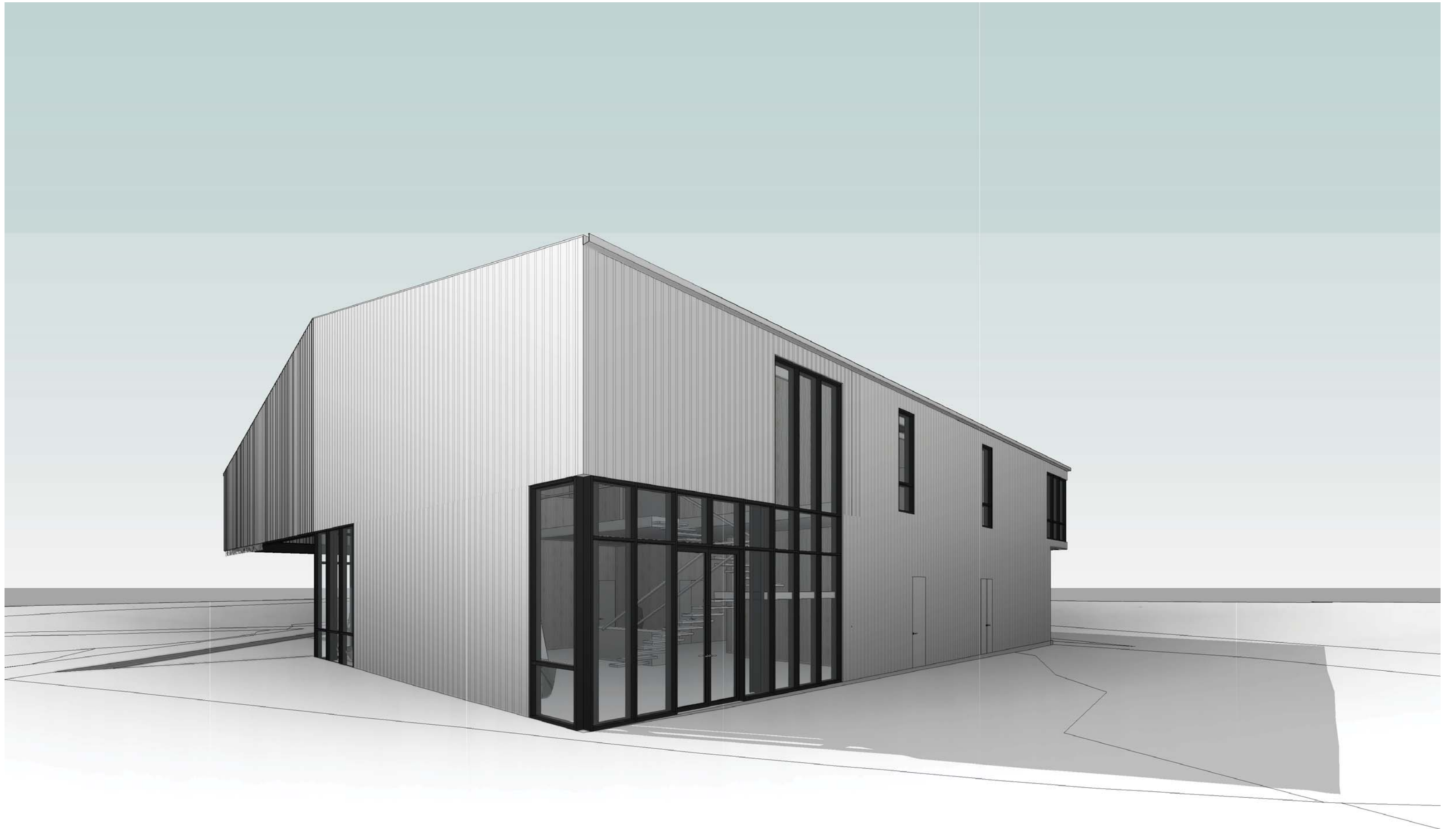








The Wagner Education Center / Center for Wooden Boats / South Lake Union / Seattle WA / View of Entry and Boatshop from under Canopy





Stephanie Bower, Architectural Illustration



Stephanie Bower, Architectural Illustration



The Wagner Education Center / Center for Wooden Boats / South Lake Union / Seattle WA / View from the Southwest at 12 pm



