

King County Department of Natural Resources and Parks,
Wastewater Treatment Division

Barton Pump Station Upgrade Project
8953 Fauntleroy Way SW

BACKGROUND & PURPOSE

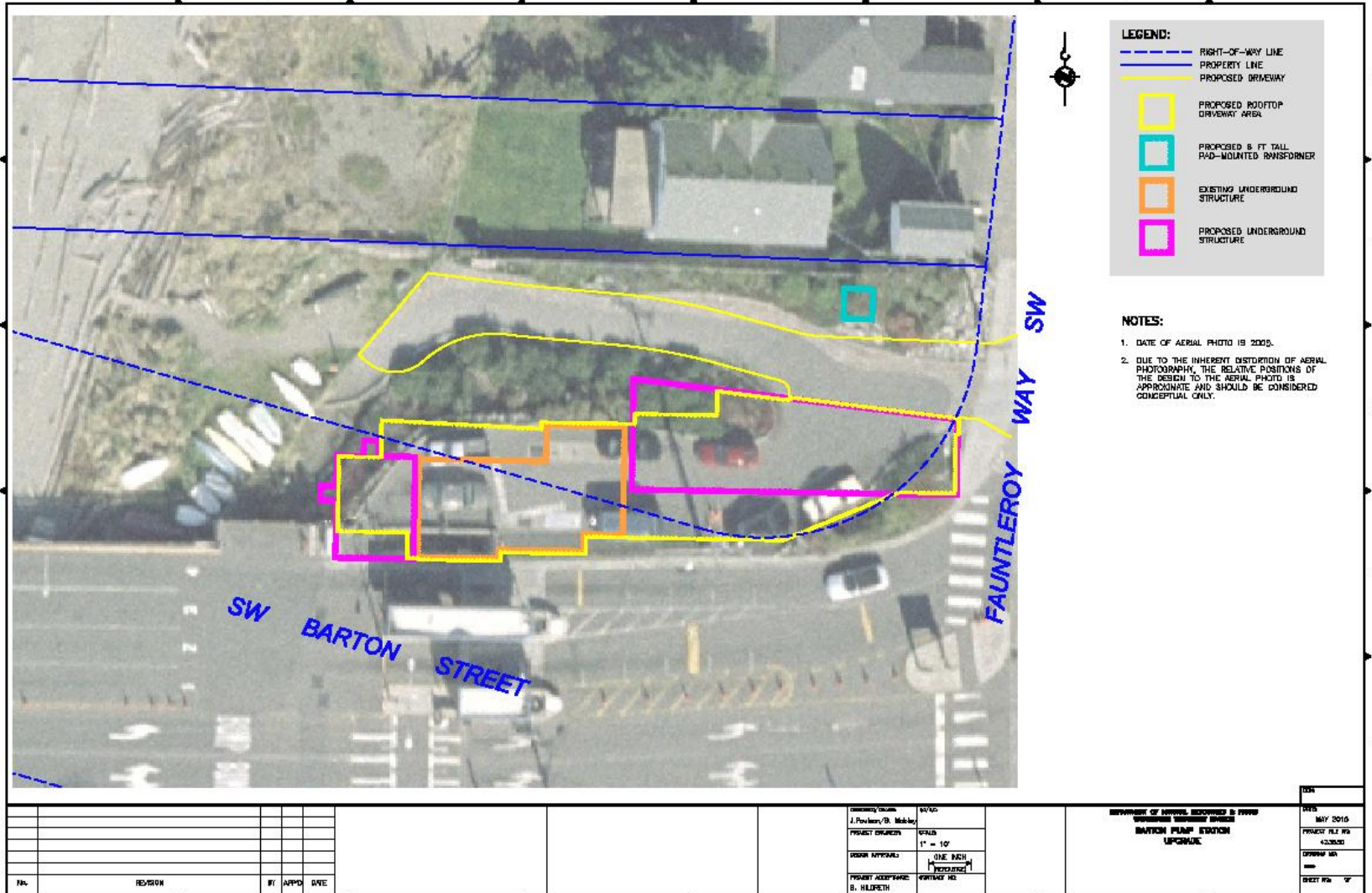
Barton Pump Station Upgrade Project

- The station is more than 50 years old, replacement parts are difficult to locate, it is difficult to maintain and there is a major risk of equipment failure.
- Washington State Dept. of Ecology requires no more than one discharge of untreated sewage per CSO outfall per year on average to comply with Clean Water Act mandates.
- Barton Pump Station experienced four overflow events in 2010.

Improvements will include:

- Back-up generator in the event of a power failure (required by Department of Ecology)
- Greater pumping capacity (from 26 mgd to 33 mgd) will reduce overflows;
- New odor control system to reduce wastewater-related odor;
- A complete upgrade of mechanical, electrical and HVAC systems, plus safety improvements to the station

Barton Pump Station: Existing & Proposed Footprint



				DESIGNER: J. PAVLICH / B. MCKEY		SCALE: 1" = 10'		DEPARTMENT OF PUBLIC WORKS & PARKS WATERWAYS SERVICES DIVISION BARTON PUMP STATION UPGRADE		DATE: MAY 2016
				PROJECT ENGINEER: J. PAVLICH		DRAWN BY: B. MCKEY				PROJECT FILE NO: 15-0303
				CHECKED BY: S. HILBERT		DATE: 05/11/16				DRAWING NO: 15-0303-01
										SHEET NO. OF 1 OF 1

Design Commission Workshop 7/14/2011

Recommendations/General Concepts

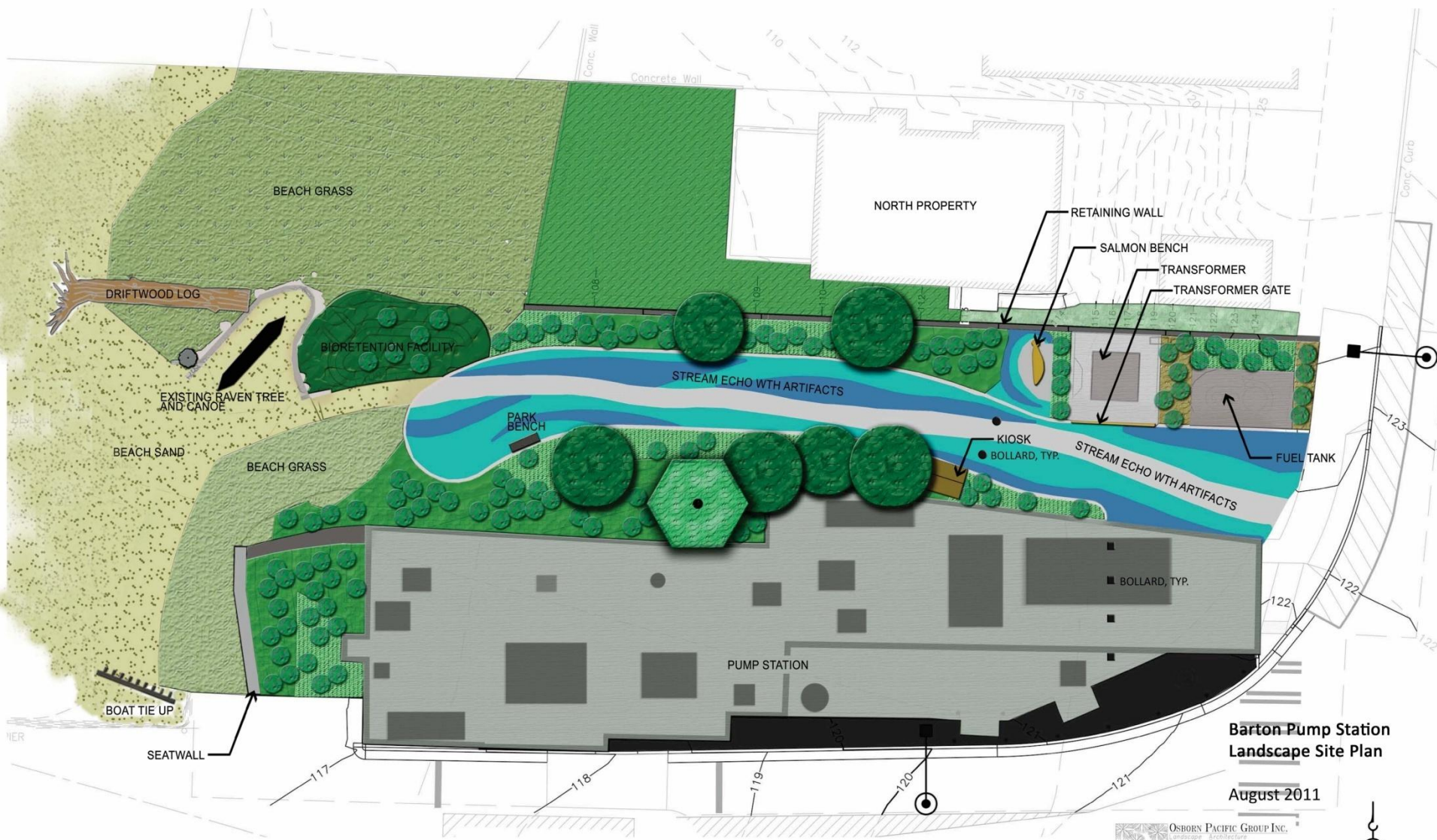
- *Integrate artwork and tie together elements of the design*

Examples:

- Extend stream echo artwork to full width and length of driveway;
- Fluid transition of stream echo into beach ;
- If possible, narrow driveway visually and use plantings to creep over edges;
- Re-examine fencing/railings to make them light, transparent, and simple;

SDC recommendations, cont.

- Move salmon home run from north fence to landscaped areas in front of the retaining wall
- Address the transition from the stream echo trail to the turn around/station roof
- Install bollards on roof of station to prevent vehicle access
- Improve integration of artwork within the site

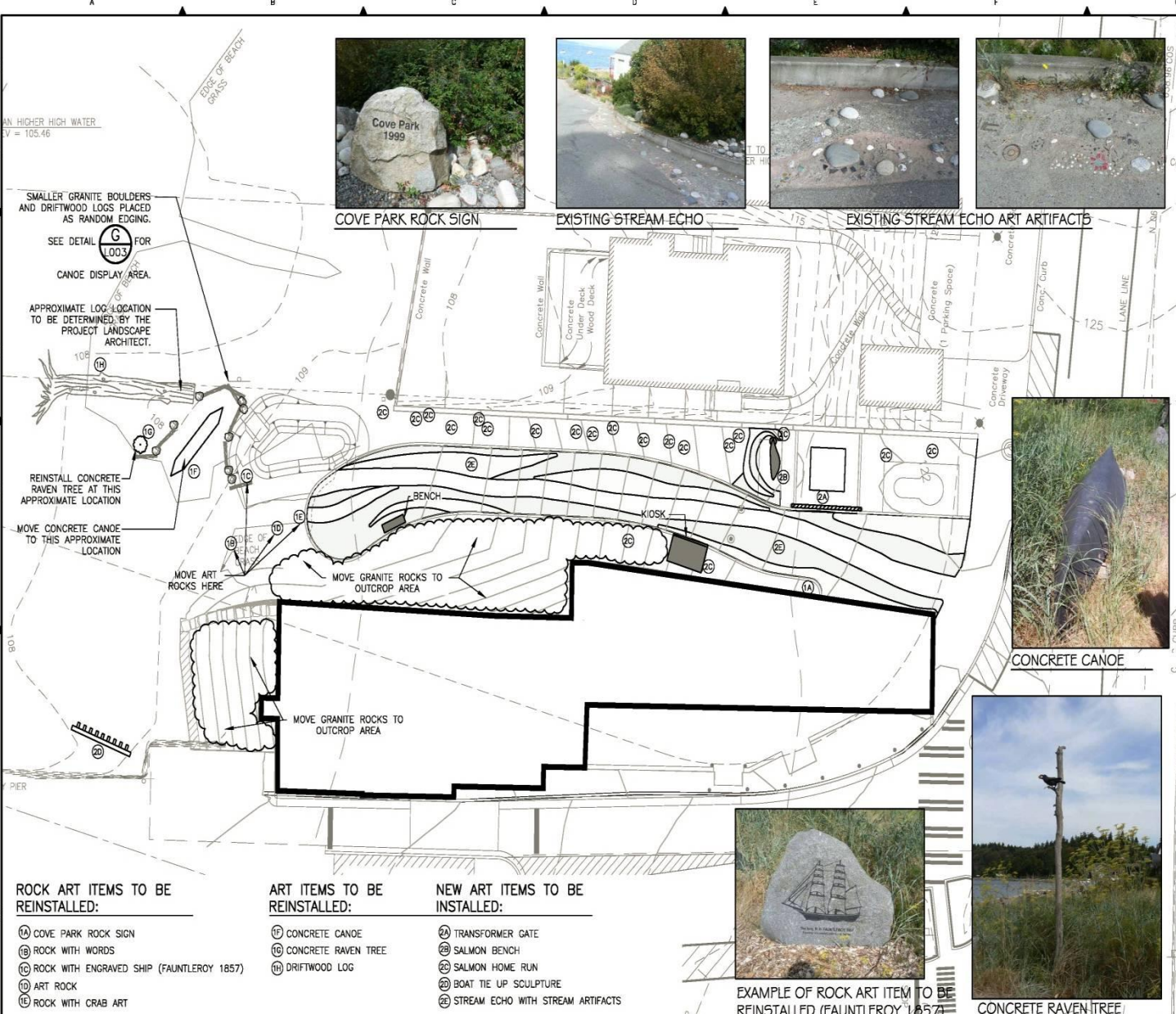


**Barton Pump Station
Landscape Site Plan**

August 2011

OSBORN PACIFIC GROUP INC.
 Landscape Architecture
 Recreation Planning
 Environmental Compliance
 2125 Western Avenue, Suite 502
 Seattle, Washington 98121
 206-284-8865 | opp@osbornpacific.com





- GENERAL NOTES**
- SEE SHEET L003 FOR LANDSCAPE SITE FURNISHING & DETAILS
 - SEE SHEET L101 FOR LANDSCAPE DEMOLITION AND ARTWORK SALVAGE PLAN
 - SEE SHEET L102 FOR LANDSCAPE PLANTING PLAN
 - REFER TO STRUCTURAL DRAWINGS FOR FURTHER NOTES REGARDING TRANSFORMER GATE, SALMON BENCH, SALMON HOME RUN AND BOAT TIE UP SCULPTURE ARTWORK AND INSTALLATION.
 - CONTRACTOR WILL NOTIFY PROJECT REPRESENTATIVE WHEN READY TO INSTALL STREAM ARTIFACTS NO LESS THAN 48 HOURS IN ADVANCE. PROJECT REPRESENTATIVE WILL SUPERVISE INSTALLATION OF STREAM ARTIFACTS IN STREAM ECHO.
 - STOCKPILED EXISTING LOG IN ART STORAGE AREA. REPLACE LOG AFTER ALL EARTHWORK AND MACHINE ACCESS IS COMPLETED AND PRIOR TO BEACH GRASS INSTALLATION. LOG LOCATION TO BE DETERMINED BY LANDSCAPE ARCHITECT.

HIGHER HIGH WATER
V = 105.46

SMALLER GRANITE BOULDERS AND DRIFTWOOD LOGS PLACED AS RANDOM EDGING.

SEE DETAIL (G) FOR CANOE DISPLAY AREA.

APPROXIMATE LOG LOCATION TO BE DETERMINED BY THE PROJECT LANDSCAPE ARCHITECT.

REINSTALL CONCRETE RAVEN TREE AT THIS APPROXIMATE LOCATION

MOVE CONCRETE CANOE TO THIS APPROXIMATE LOCATION

ROCK ART ITEMS TO BE REINSTALLED:

- (1A) COVE PARK ROCK SIGN
- (1B) ROCK WITH WORDS
- (1C) ROCK WITH ENGRAVED SHIP (FAUNTLEROY 1857)
- (1D) ART ROCK
- (1E) ROCK WITH CRAB ART

ART ITEMS TO BE REINSTALLED:

- (1F) CONCRETE CANOE
- (1G) SALMON BENCH
- (1H) DRIFTWOOD LOG

NEW ART ITEMS TO BE INSTALLED:

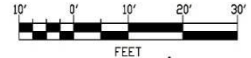
- (2A) TRANSFORMER GATE
- (2B) SALMON BENCH
- (2C) SALMON HOME RUN
- (2D) BOAT TIE UP SCULPTURE
- (2E) STREAM ECHO WITH STREAM ARTIFACTS



EXAMPLE OF ROCK ART ITEM TO BE REINSTALLED (FAUNTLEROY 1857)



CONCRETE RAVEN TREE



Call 2 Working Days Before You Dig!
1-800-424-5555

N:\Active Projects\2009\09020200 Barton Pump Station\CAD Documents\Asst\W\1104.dwg | Layout: L104_PAC
 PLOTTED: Jul 26, 2011 10:08:39am By: Brandon
 IMAGE: 100_8.002.092 2009-09-26 Barton art 002.dwg 2009-09-26 Barton art 002.dwg 2009-09-26 Barton art 002.dwg 2009-09-26 Barton art 002.dwg

OSBORN PACIFIC GROUP INC.
 Landscape Architecture
 Recreation Planning
 Environmental Compliance
 2125 Western Avenue, Suite 502
 Seattle, Washington 98121
 206-256-8985 opp@osbornpacific.com

NOT FOR CONSTRUCTION
 AUGUST 2011
 DESIGN REVIEW

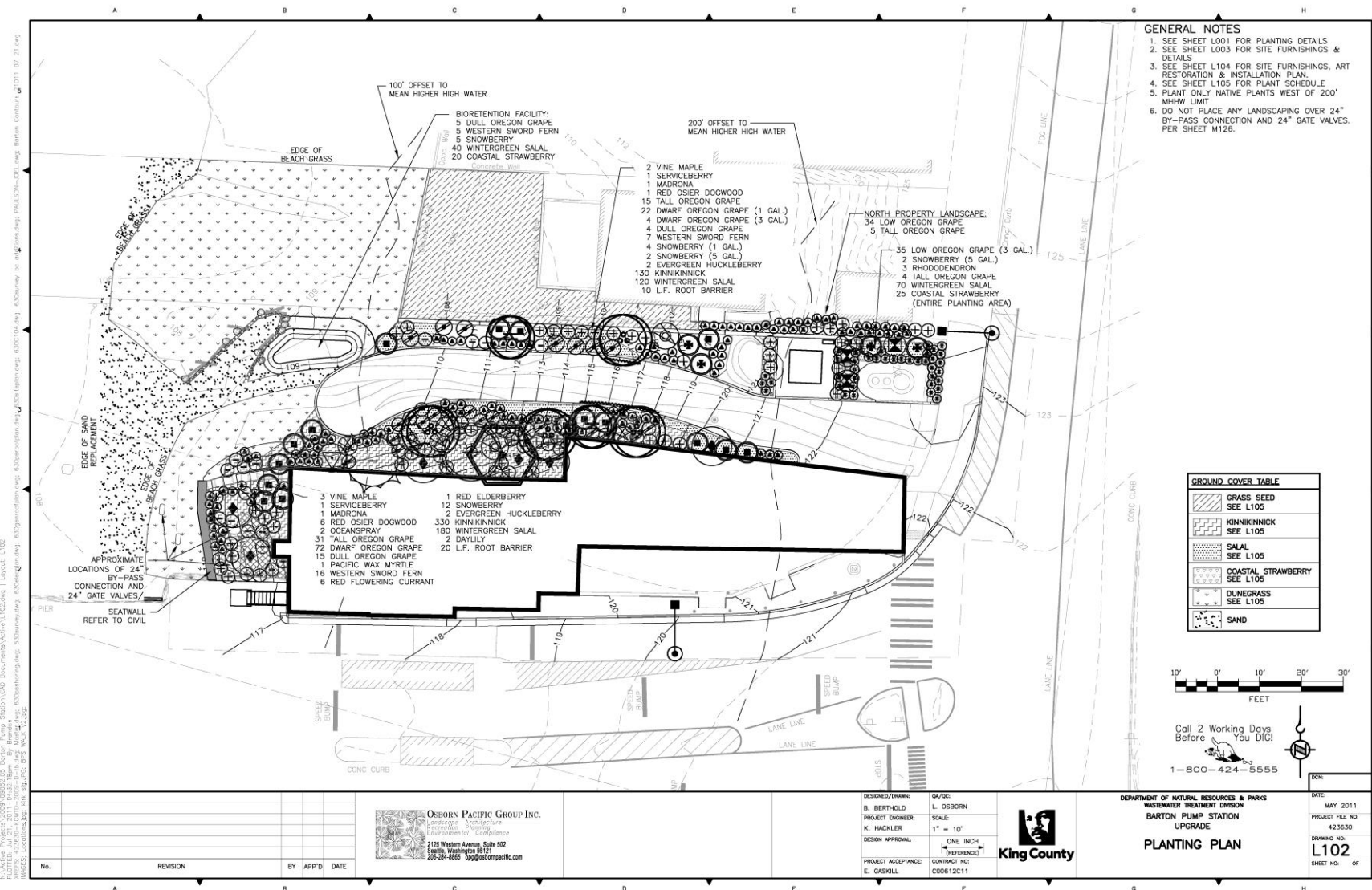
DESIGNED/DRAWN:
 S. BERTHOLD
 PROJECT ENGINEER:
 K. HACKLER
 DESIGN APPROVAL:
 PROJECT ACCEPTANCE:
 E. GASKILL

QA/QC:
 L. OSBORN
 SCALE:
 1" = 10'
 ONE INCH
 (REFERENCE)
 CONTRACT NO:
 C0612C11

DEPARTMENT OF NATURAL RESOURCES & PARKS
 WASTEWATER TREATMENT DIVISION
 BARTON PUMP STATION
 UPGRADE
King County
 SITE FURNISHINGS, ART
 RESTORATION & INSTALLATION PLAN

DATE:
 MAY 2011
 PROJECT FILE NO:
 423630
 DRAWING NO:
L104
 SHEET NO. OF

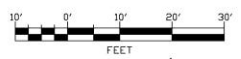




- GENERAL NOTES**
1. SEE SHEET L001 FOR PLANTING DETAILS
 2. SEE SHEET L003 FOR SITE FURNISHINGS & DETAILS
 3. SEE SHEET L104 FOR SITE FURNISHINGS, ART RESTORATION & INSTALLATION PLAN.
 4. SEE SHEET L105 FOR PLANT SCHEDULE
 5. PLANT ONLY NATIVE PLANTS WEST OF 200' MHHW LIMIT
 6. DO NOT PLACE ANY LANDSCAPING OVER 24" BY-PASS CONNECTION AND 24" GATE VALVES. PER SHEET M125.

GROUND COVER TABLE

	GRASS SEED SEE L105
	KINKINNICK SEE L105
	SALAL SEE L105
	COASTAL STRAWBERRY SEE L105
	DUNEGRASS SEE L105
	SAND



Call 2 Working Days
Before
You Dig!

1-800-424-5555

OSBORN PACIFIC GROUP INC.
 Landscape Architecture
 2105 Western Avenue, Suite 902
 Seattle, Washington 98121
 206-468-6900 osbornpacific.com

DESIGNED/DRAWN: B. BERTHOLD
 PROJECT ENGINEER: K. HACKLER
 DESIGN APPROVAL: [Signature]
 PROJECT ACCEPTANCE: E. GASKILL

DATE: L. OSBORN
 SCALE: 1" = 10'
 ONE INCH (REFERENCED)
 CONTRACT NO.: C00612C11



DEPARTMENT OF NATURAL RESOURCES & PARKS
 WASTEWATER TREATMENT DIVISION
 BARTON PUMP STATION
 UPGRADE
PLANTING PLAN

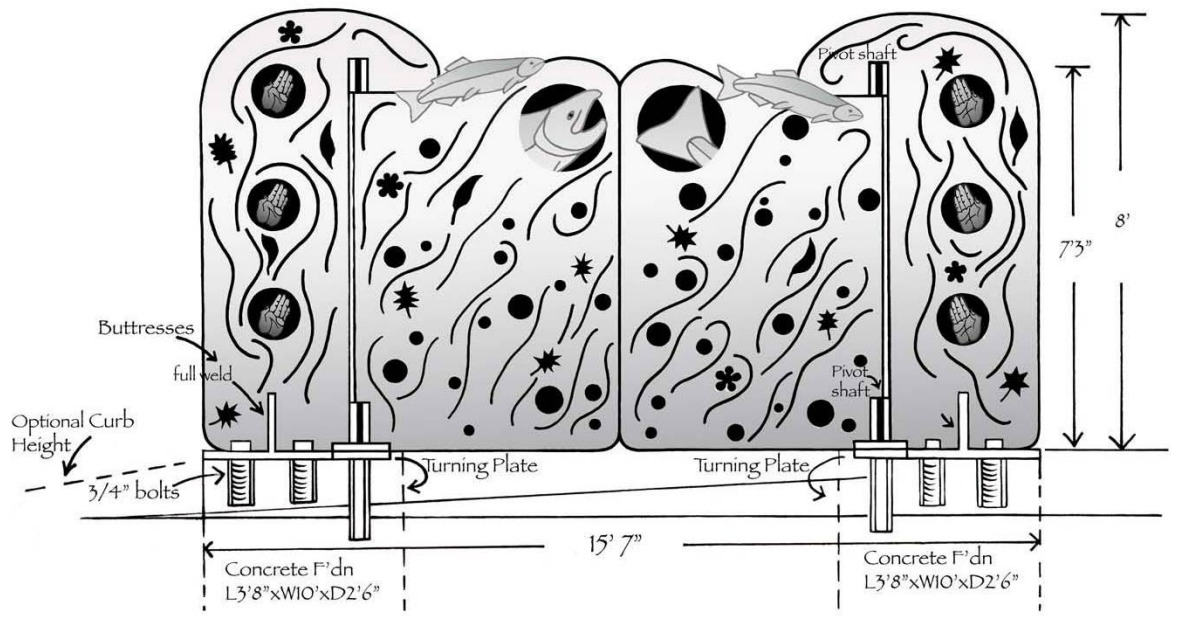
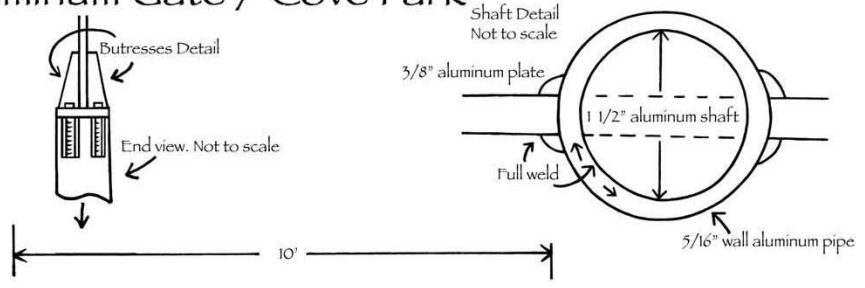
DATE: MAY 2011
 PROJECT FILE NO: 423630
 DRAWING NO: **L102**
 SHEET NO: 07

N:\Active Projects\2009\090522_02_Barton_Pump_Station\CAD Documents\Drawings\L102.dwg | Layer: L102
 PLOTTED: 11/21/2011 10:43:37 AM By: [Signature]
 WAZS2: [Signature]

No.	REVISION	BY	APP'D	DATE

Aluminum Gate / Cove Park

Tom Jay
July 24, 2011



Design for Barton Pump Station/Cove Park Boat Ramp Tie-up
Artist: Tom Jay June 2011



© Tom Jay 2011

Projected Overall Length: 13-feet

Material: 1/4" Corten Steel

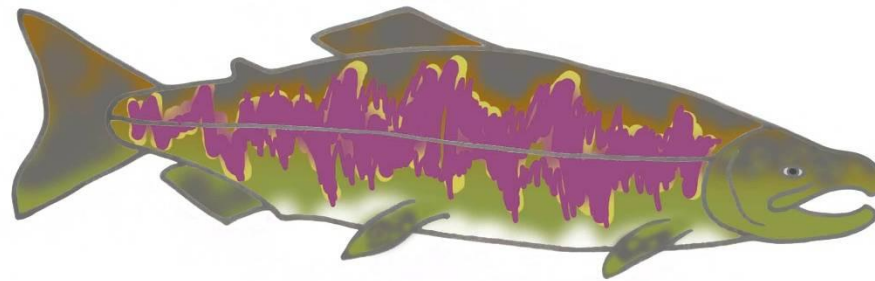


Tom Jay



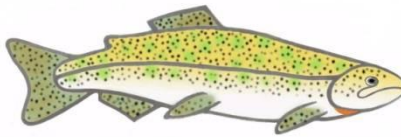
Male Chinook (King)

Tom Jay
"Salmon Home Run"
Colors for Cove Park
July 2011



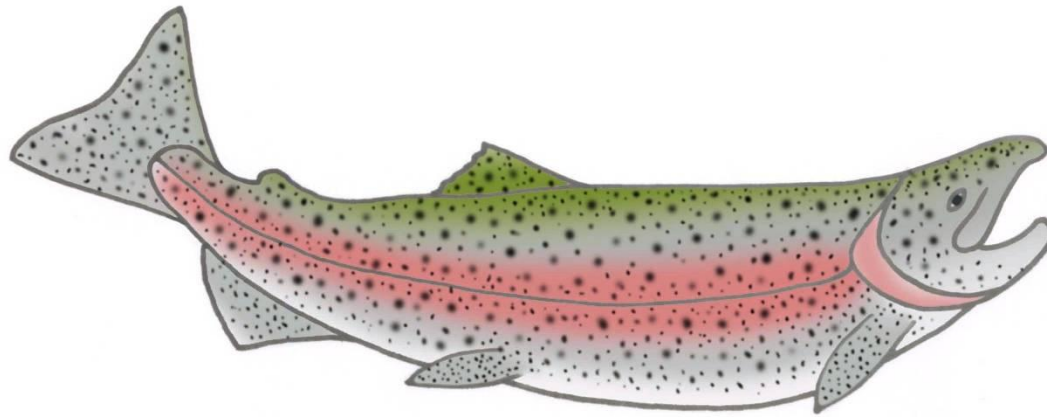
Tom Jay
"Salmon Home Run"
Colors for Cove Park
July 2011

Male Chum



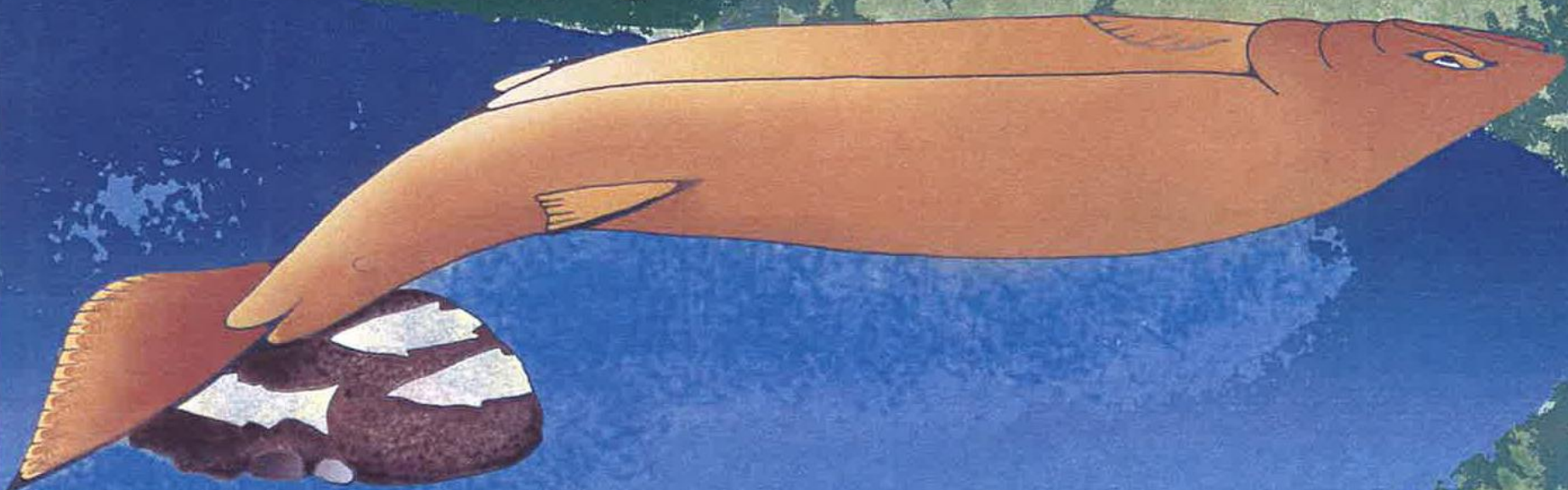
Tom Jay
"Salmon Home Run"
Colors for Cove Park
July 2011

Cutthroat



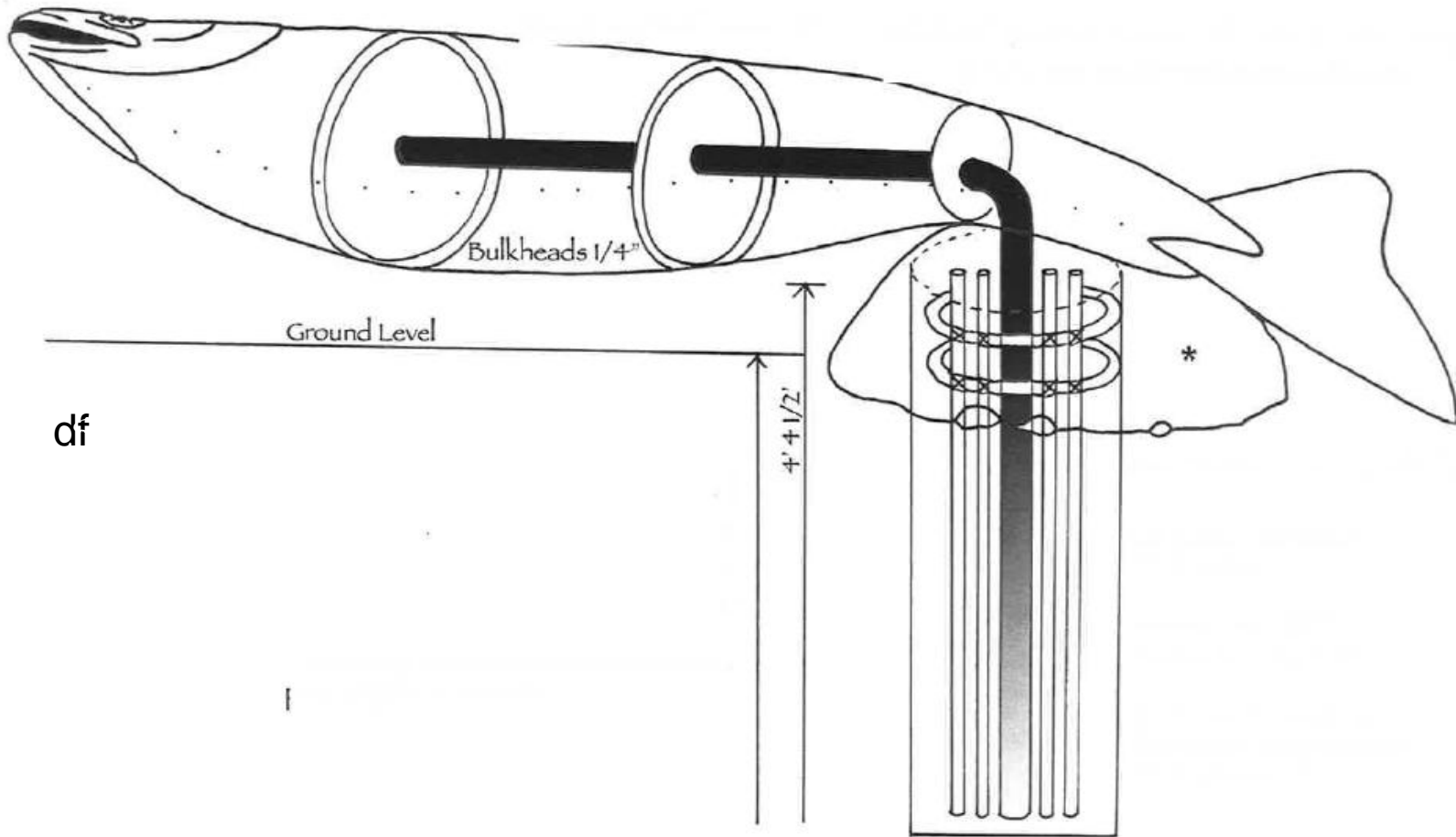
Tom Jay
"Salmon Home Run"
Colors for Cove Park
July 2011

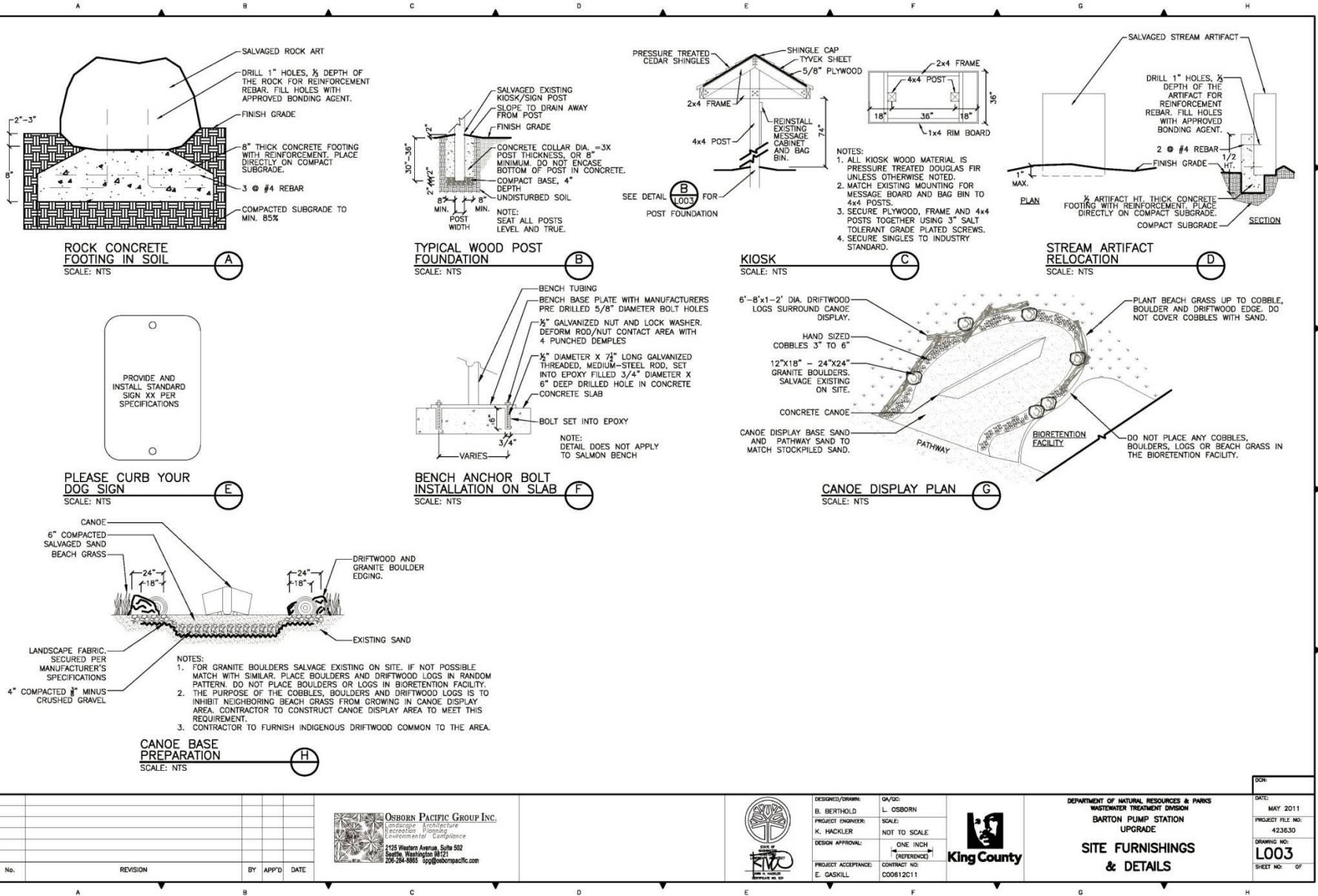
MaleSteelhead



Salmon Bench Cove Park / Barton Pump Station

© Tom Jay 2011





N:\Active Projects\2009\08020205 Barton Pump Station\CAD Documents\Active\L003.dwg | Layout: L003
 DATE: 4/23/11 10:01:10 AM
 USER: jbrandon
 IMAGE: ink, wpl, hpc

OSBORN PACIFIC GROUP INC.
 landscape architecture
 recreation planning
 environmental landscaping
 1125 Western Avenue, Suite 532
 Seattle, Washington 98121
 206-284-8885 info@osbornpacific.com

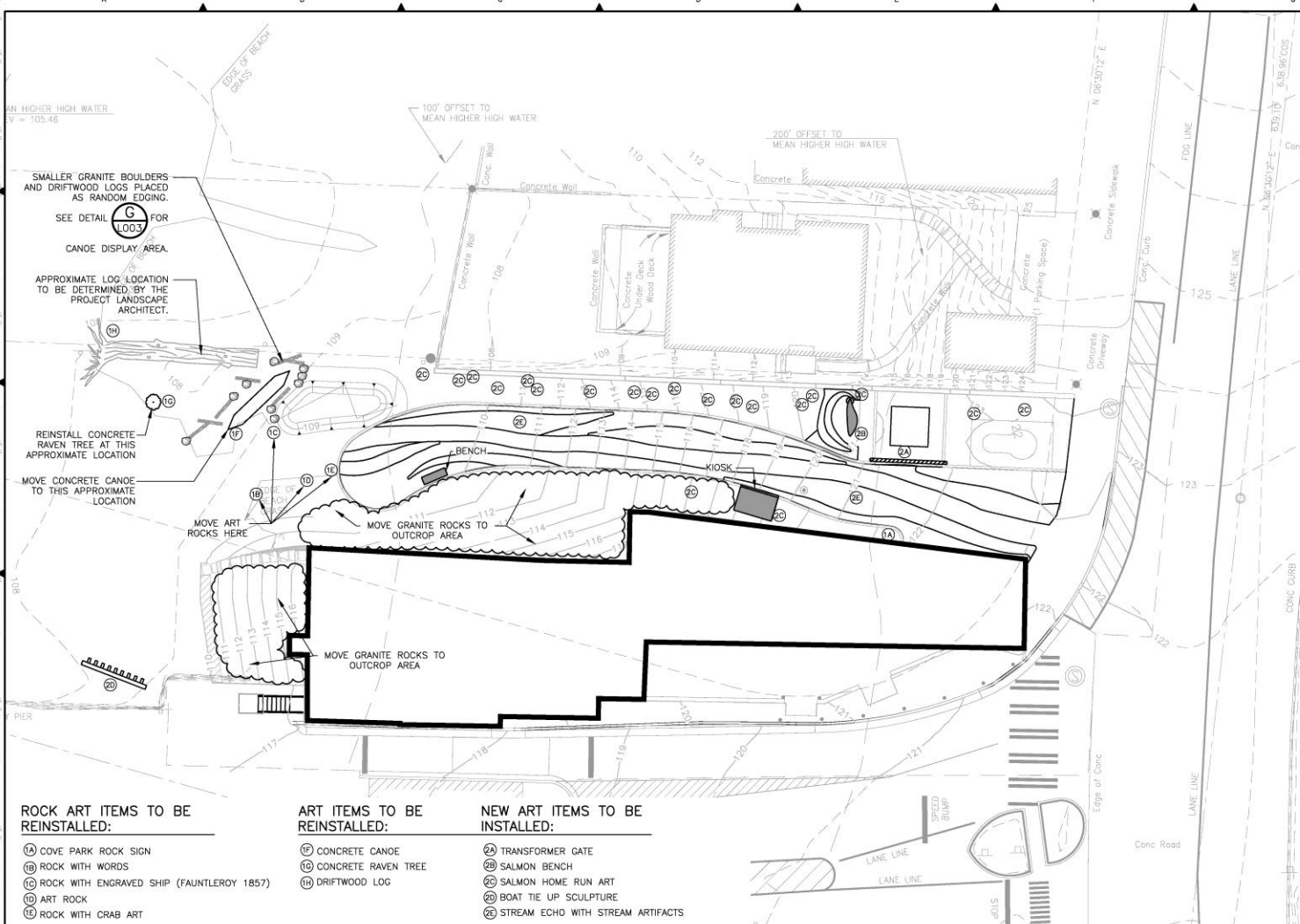


DESIGNED/OWNER: B. BERTHOLD
 PROJECT ENGINEER: K. HACKLER
 DESIGN APPROVAL: [Signature]
 PROJECT ACCEPTANCE: E. GASKILL
 DATE: L. OSBORN
 SCALE: NOT TO SCALE
 ONE INCH (REFERENCE)



DEPARTMENT OF NATURAL RESOURCES & PARKS
 WASTEWATER TREATMENT DIVISION
BARTON PUMP STATION UPGRADE
SITE FURNISHINGS & DETAILS
 DATE: MAY 2011
 PROJECT FILE NO: 423630
 DRAWING NO: L003
 SHEET NO: OF

No.	REVISION	BY	APP'D	DATE



- GENERAL NOTES**
1. SEE SHEET L003 FOR LANDSCAPE SITE FURNISHING & DETAILS.
 2. SEE SHEET L101 FOR LANDSCAPE DEMOLITION AND ARTWORK SALVAGE PLAN.
 3. SEE SHEET L102 FOR LANDSCAPE PLANTING PLAN.
 4. REFER TO STRUCTURAL DRAWINGS FOR FURTHER NOTES REGARDING TRANSFORMER GATE, SALMON BENCH, SALMON HOME RUN AND BOAT TIE UP SCULPTURE ARTWORK AND INSTALLATION.
 5. CONTRACTOR WILL NOTIFY PROJECT REPRESENTATIVE WHEN READY TO INSTALL STREAM ARTIFACTS NO LESS THAN 48 HOURS IN ADVANCE. PROJECT REPRESENTATIVE WILL SUPERVISE INSTALLATION OF STREAM ARTIFACTS IN STREAM ECHO.
 6. STOCKPILED EXISTING LOG IN ART STORAGE AREA. REPLACE LOG AFTER ALL EARTHWORK AND MACHINE ACCESS IS COMPLETED AND PRIOR TO BEACH GRASS INSTALLATION. LOG LOCATION TO BE DETERMINED BY LANDSCAPE ARCHITECT.

ROCK ART ITEMS TO BE REINSTALLED:

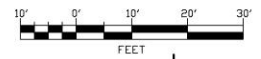
- (1A) COVE PARK ROCK SIGN
- (1B) ROCK WITH WORDS
- (1C) ROCK WITH ENGRAVED SHIP (FAUNTEROY 1857)
- (1D) ART ROCK
- (1E) ROCK WITH CRAB ART

ART ITEMS TO BE REINSTALLED:

- (1F) CONCRETE CANOE
- (1G) CONCRETE RAVEN TREE
- (1H) DRIFTWOOD LOG

NEW ART ITEMS TO BE INSTALLED:

- (2A) TRANSFORMER GATE
- (2B) SALMON BENCH
- (2C) SALMON HOME RUN ART
- (2D) BOAT TIE UP SCULPTURE
- (2E) STREAM ECHO WITH STREAM ARTIFACTS



Call 2 Working Days Before You DGI!

1-800-424-5555



H:\Active Projects\2009\0902\05 Barton Pump Station\AO Documents\A\104.dwg | Layout: L104
 05/11/2011 4:26:31 PM | User: greg | Plot: greg | Plot Device: greg | Plot Scale: 1.0000
 PLOT FILE: L:\Projects\2009\0902\05 Barton Pump Station\AO Documents\A\104.dwg | Plot: greg | Plot Device: greg | Plot Scale: 1.0000
 PLOT FILE: L:\Projects\2009\0902\05 Barton Pump Station\AO Documents\A\104.dwg | Plot: greg | Plot Device: greg | Plot Scale: 1.0000

No.	REVISION	BY	APP'D	DATE

OSBORN PACIFIC GROUP INC.
 Landscape Architecture
 Recreation Planning
 Environmental Development
 2125 Western Avenue, Suite 502
 Seattle, Washington 98121
 206-284-8865 greg@osbornpacific.com

DESIGNED/DRAWN: GA/OC
 B. BERTHOLD L. OSBORN
 PROJECT ENGINEER: K. HACKLER
 SCALE: 1" = 10'
 DESIGN APPROVAL: (ONE INCH REFERENCE)
 PROJECT ACCEPTANCE: E. GASKILL
 CONTRACT NO: C00612C11



DEPARTMENT OF NATURAL RESOURCES & PARKS
 WASTEWATER TREATMENT DIVISION
BARTON PUMP STATION UPGRADE
SITE FURNISHINGS, ART RESTORATION & INSTALLATION PLAN
 DATE: MAY 2011
 PROJECT FILE NO: 423630
 DRAWING NO: **L104**
 SHEET NO: OF

Access to Park Looking West



Car Entering Pump Station Driveway (Street-End Park Entrance on Right of Photo)



Westward Facing Wall of Underground Pump Station (Existing).
Photo is Looking South Toward Ferry Terminal.



King County-owned Residential Property (any disturbed areas containing beach grass will be revegetated)



Street-End Park Public Access (pavement) & Adjacent King County Property



Beach Area Fronting Pump Station (looking south toward ferry terminal)

