

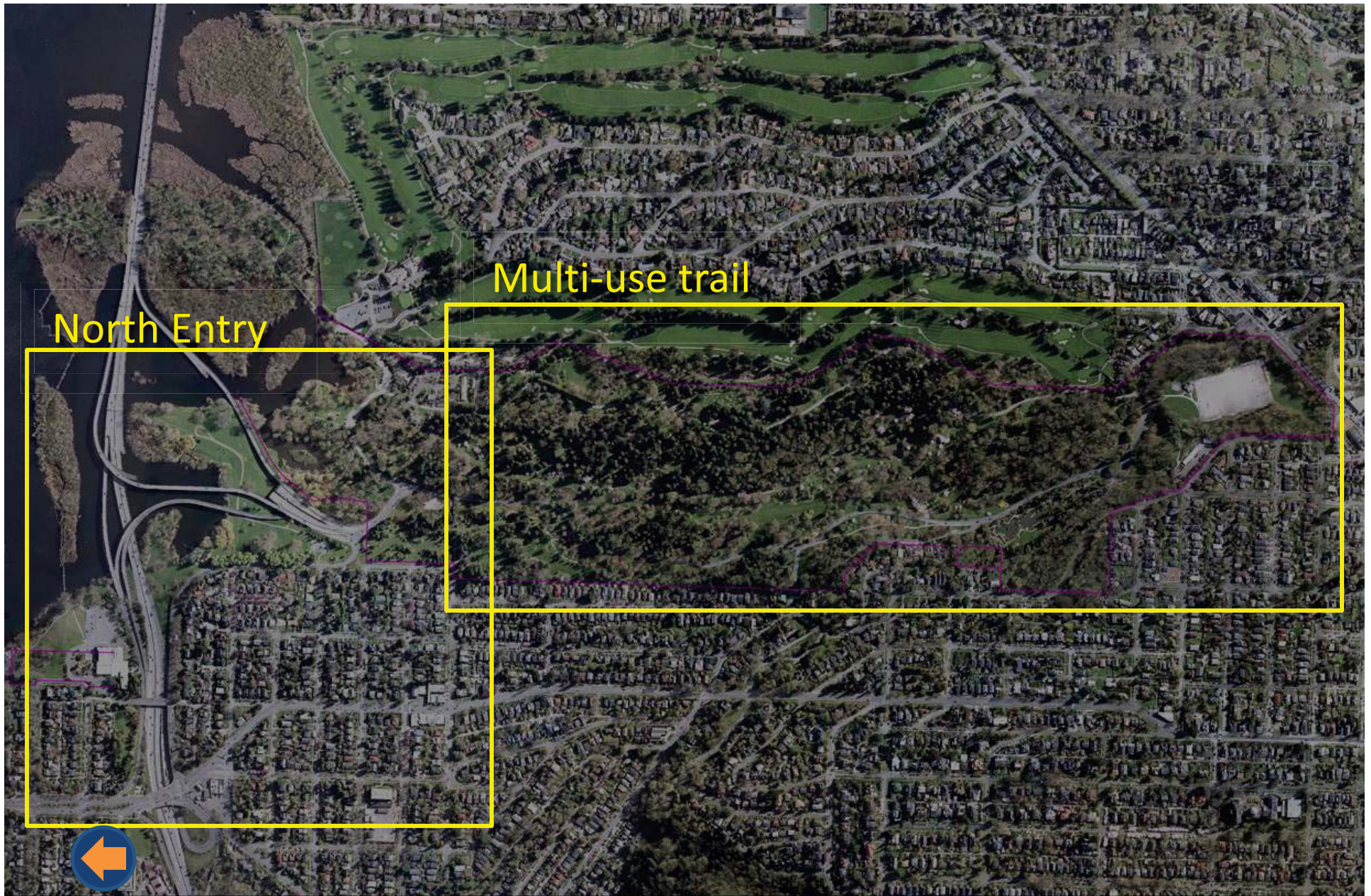


Washington Park Arboretum

North Entry

Multi-use Trail

General Site Overview



North Entry Options

presented at the public meeting 6.8.2011

Option A

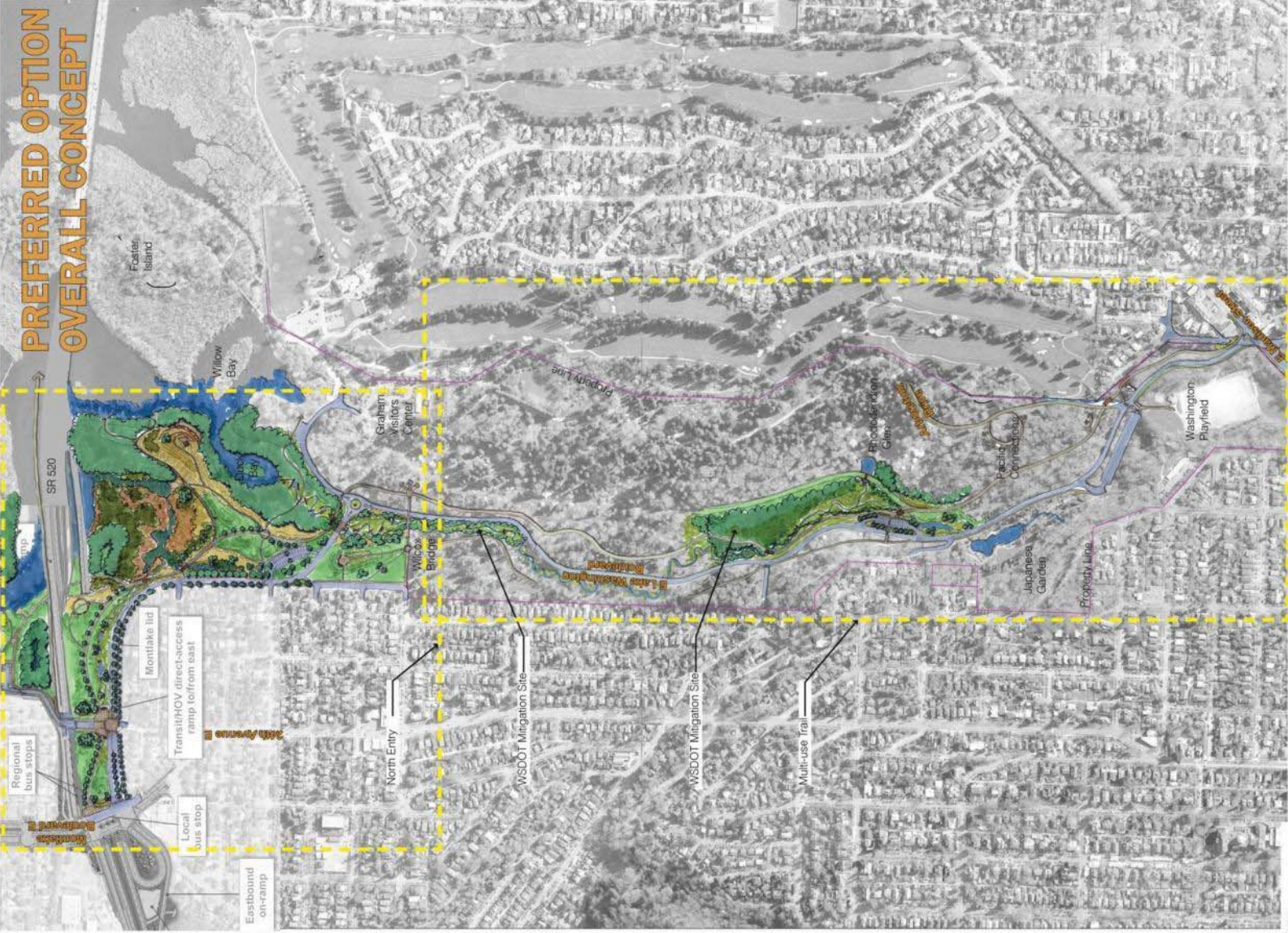
Option B

Option C



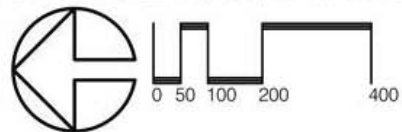
Preferred Alternative

submitted to WSDOT 6.10.2011



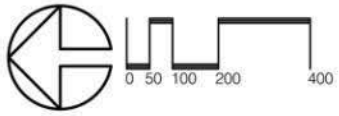


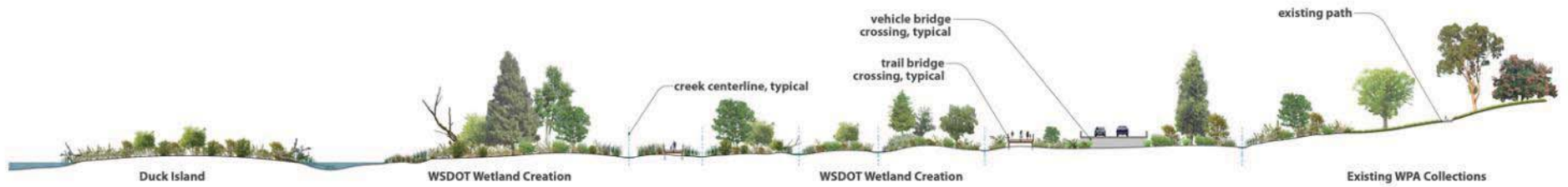






Enlargement A





Section 1

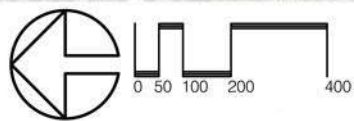


Section 2



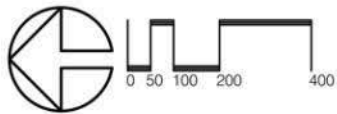


Continued from previous page

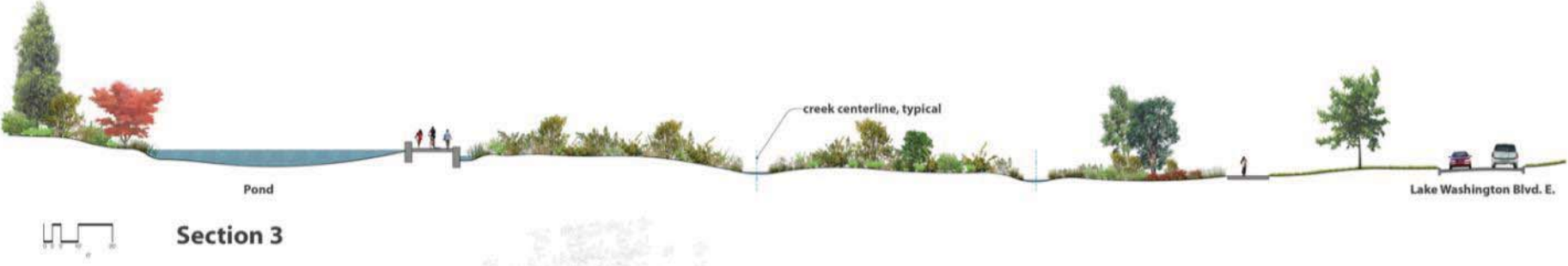




Enlargement B



Section 3



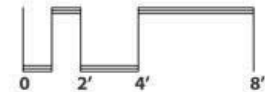
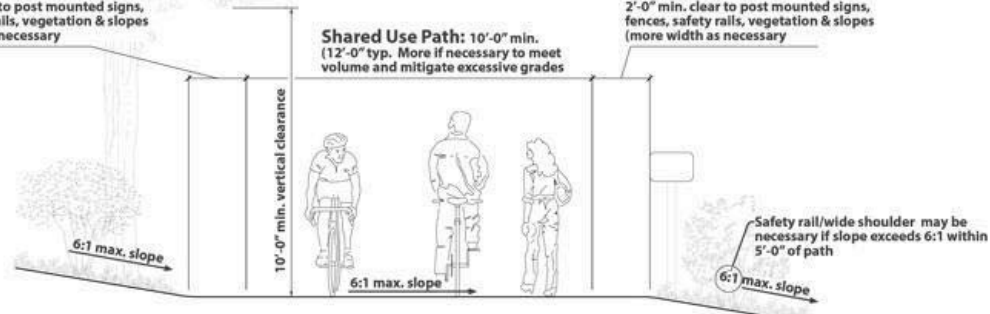
Typical Trail Section



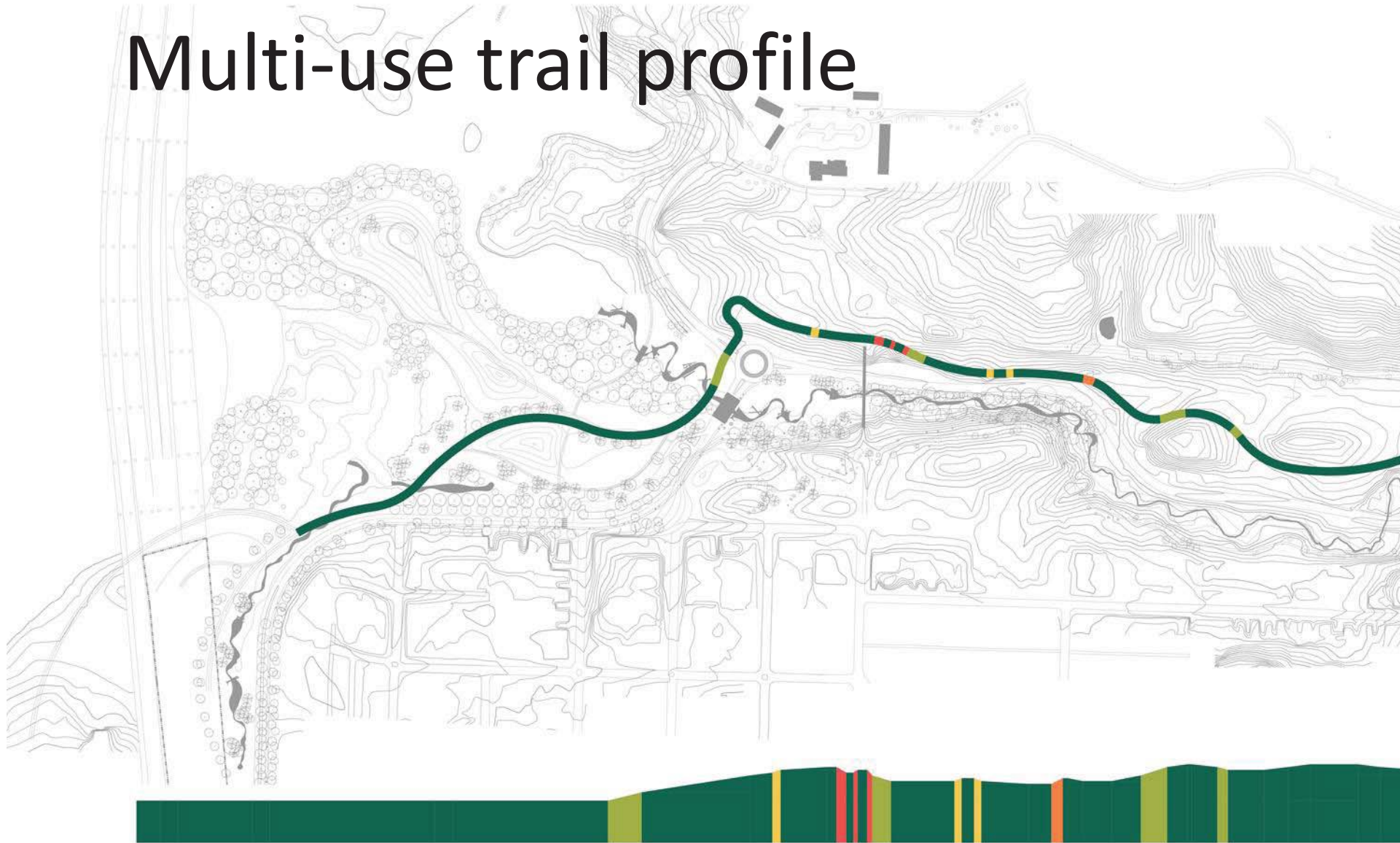
Arboretum Drive:
2'-0" min. clear to post mounted signs,
fences, safety rails, vegetation & slopes
(more width as necessary)

Shared Use Path: 10'-0" min.
(12'-0" typ. More if necessary to meet
volume and mitigate excessive grades)

Arboretum Drive:
2'-0" min. clear to post mounted signs,
fences, safety rails, vegetation & slopes
(more width as necessary)



Multi-use trail profile



SLOPE LEGEND

	PATH SLOPES 5% OR LESS
	PATH SLOPES 5% TO 8.33%
	PATH SLOPES 8.33% TO 10%
	PATH SLOPES 10% TO 12%
	PATH SLOPES 12.5% OR GREATER

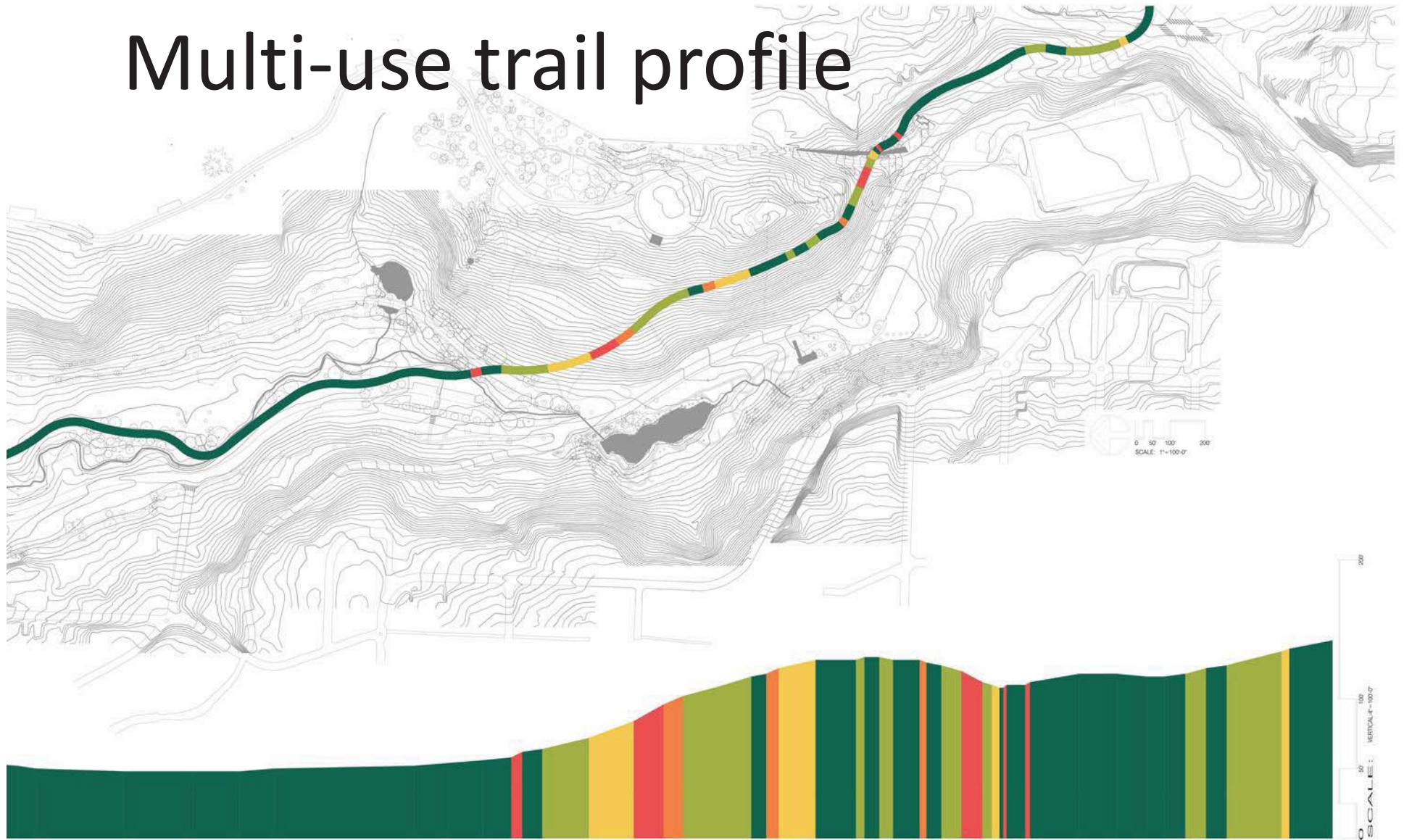
AASHTO SHARED USE PATH CRITERIA:

- ALLOWABLE FOR ANY DISTANCE. PATH SEGMENTS WITH SLOPE ≤5% CAN BE CONSIDERED TO BE RESTING INTERVALS
- ALLOWABLE FOR UP TO 200 LINEAL FEET OF PATH, MUST BE FOLLOWED BY A 'RESTING INTERVAL' OF AT LEAST 5 FEET IN LENGTH.
- ALLOWABLE FOR UP TO 30 LINEAL FEET OF PATH, MUST BE FOLLOWED BY A 'RESTING INTERVAL' OF AT LEAST 5 FEET IN LENGTH
- ALLOWABLE FOR UP TO 10 LINEAL FEET OF PATH, MUST BE FOLLOWED BY A 'RESTING INTERVAL' OF AT LEAST 5 FEET IN LENGTH
- NOT ALLOWABLE WITHIN AASHTO STANDARDS FOR SHARED USE PATH

-
-
- NO MORE THAN 30% OF THE TOTAL PATH LENGTH SHOULD HAVE A SLOPE EXCEEDING 8.33%
-

continued on next page

Multi-use trail profile



continued from previous page

THIS PORTION OF THE GRAPHIC REPRESENTS EXISTING
GRADE ALONG PROPOSED PATHWAY CENTERLINE

Next steps





Thank You for Attending!

Property of MSCUA, University of Washington Libraries. Photo Coll 700