

**Presentation to the  
Seattle Design Commission  
March 18, 2010**

North and South Portal Areas and the  
Tunnel Operations Buildings

Prepared by ROMA Design Group and NBBJ

# Agenda

January 21<sup>st</sup>

Bored Tunnel Realignment

Update of South & North Portal Alternatives

Goals & Objectives

February 18<sup>th</sup>

Response to Comments

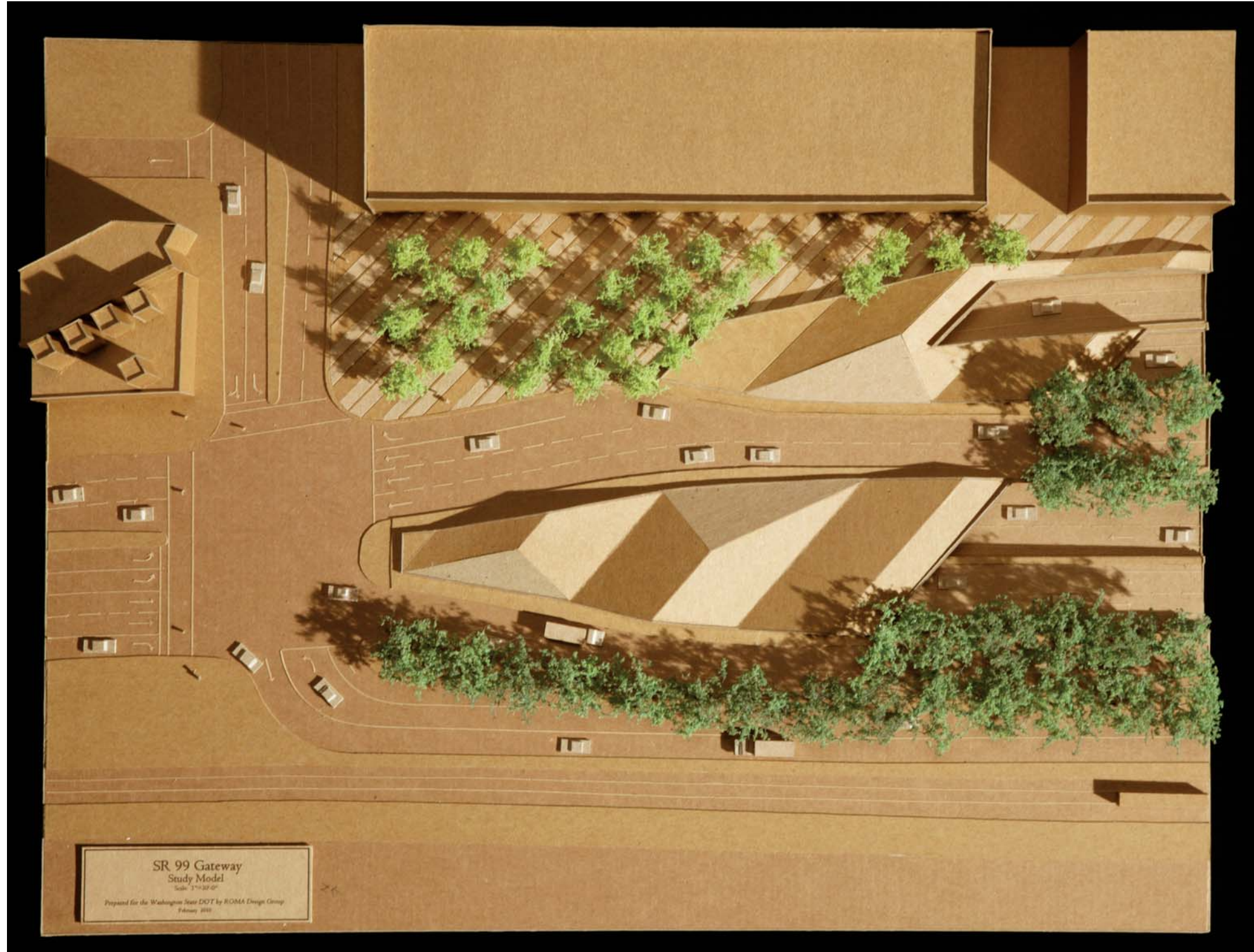
Focus on Tunnel Operations Building

March 18<sup>th</sup>

- South Portal Concepts
- Railroad Way South Concepts
- South Tunnel Operations Building
- North Tunnel Operations Building
- North Portal Concepts

April 15<sup>th</sup>

Components & Treatments



SOUTH PORTAL: OPTION D-1A

# Alaskan Way Viaduct Replacement Project

*Prepared for Washington State Department of Transportation and City of Seattle by ROMA Design Group*

MARCH 24, 2010

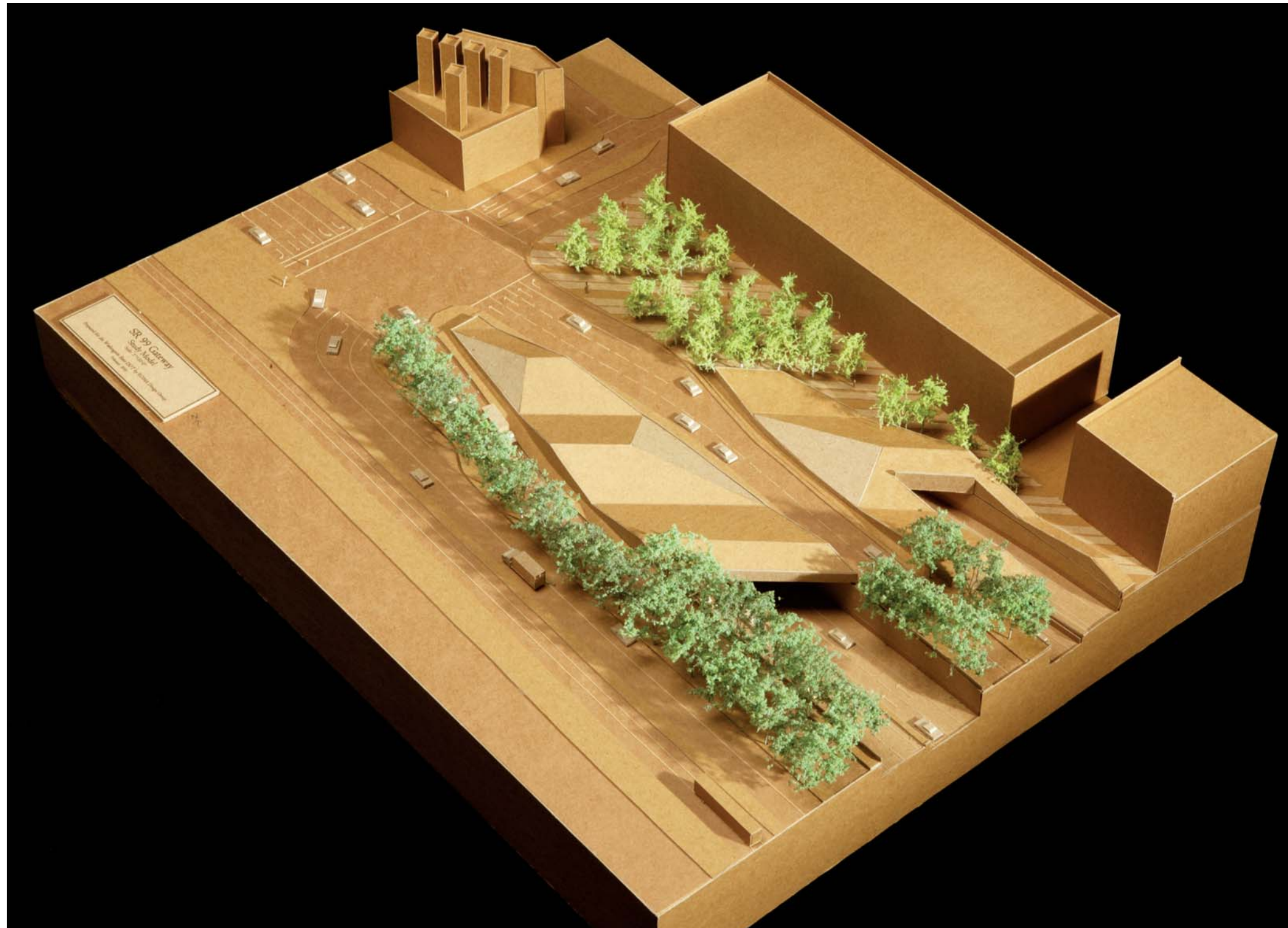


SOUTH PORTAL: VIEWS FROM NORTH AND SOUTH, RAILROAD WAY

# Alaskan Way Viaduct Replacement Project

*Prepared for Washington State Department of Transportation and City of Seattle by ROMA Design Group*

MARCH 24, 2010

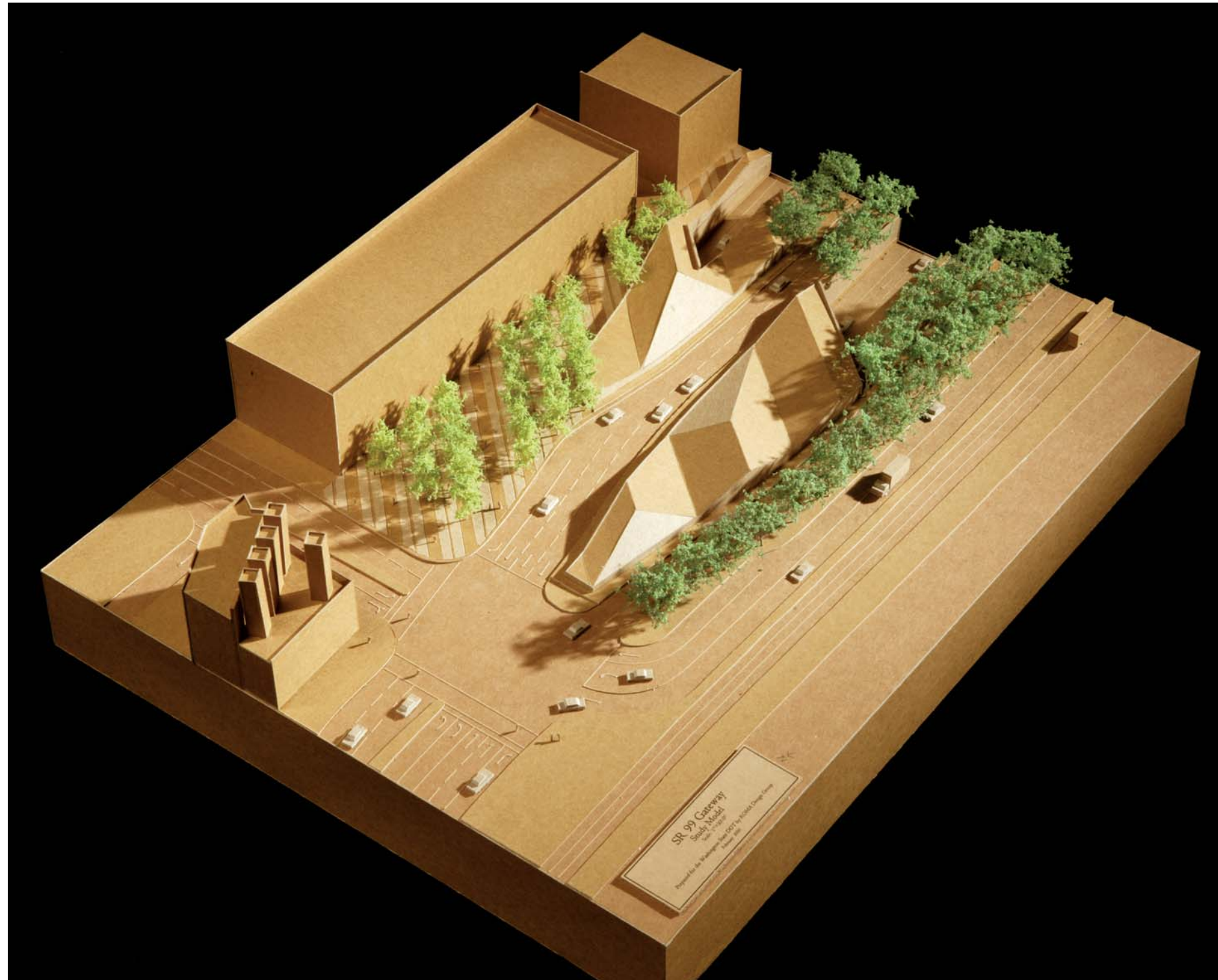


SOUTH PORTAL: VIEW FROM NORTHWEST, OPTION D-1A

# Alaskan Way Viaduct Replacement Project

*Prepared for Washington State Department of Transportation and City of Seattle by ROMA Design Group*

MARCH 24, 2010



SOUTH PORTAL: VIEW FROM SOUTHWEST, OPTION D-1A

# Alaskan Way Viaduct Replacement Project

*Prepared for Washington State Department of Transportation and City of Seattle by ROMA Design Group*

MARCH 24, 2010

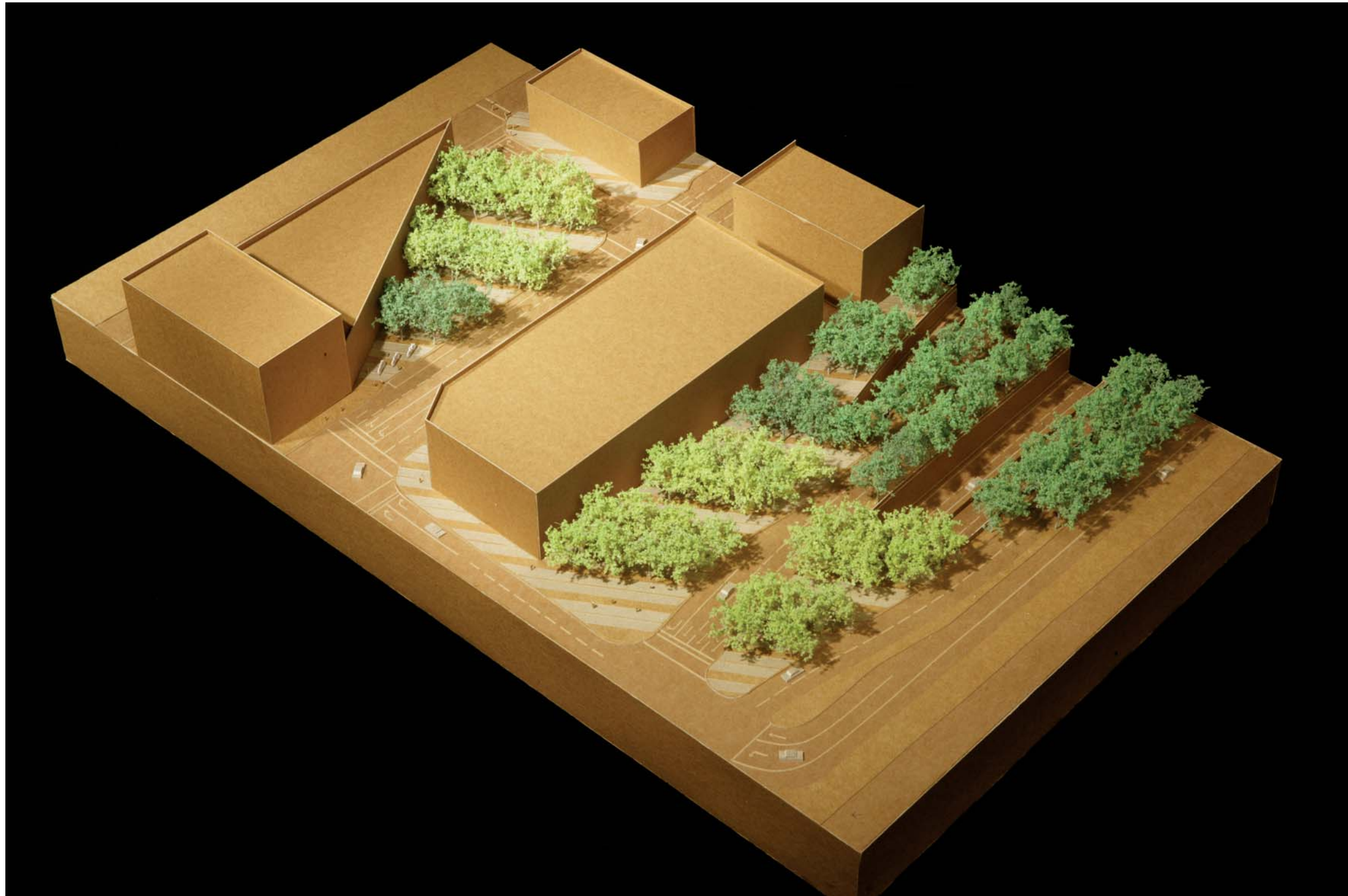


SOUTH PORTAL: VIEW FROM NORTHWEST, OPTION D-3

# Alaskan Way Viaduct Replacement Project

*Prepared for Washington State Department of Transportation and City of Seattle by ROMA Design Group*

MARCH 24, 2010



SOUTH PORTAL: VIEW FROM SOUTHWEST, OPTION D-3

# Alaskan Way Viaduct Replacement Project

*Prepared for Washington State Department of Transportation and City of Seattle by ROMA Design Group*

MARCH 24, 2010





SOUTH PORTAL: RAILROAD WAY

# Alaskan Way Viaduct Replacement Project

*Prepared for Washington State Department of Transportation and City of Seattle by ROMA Design Group*

MARCH 24, 2010



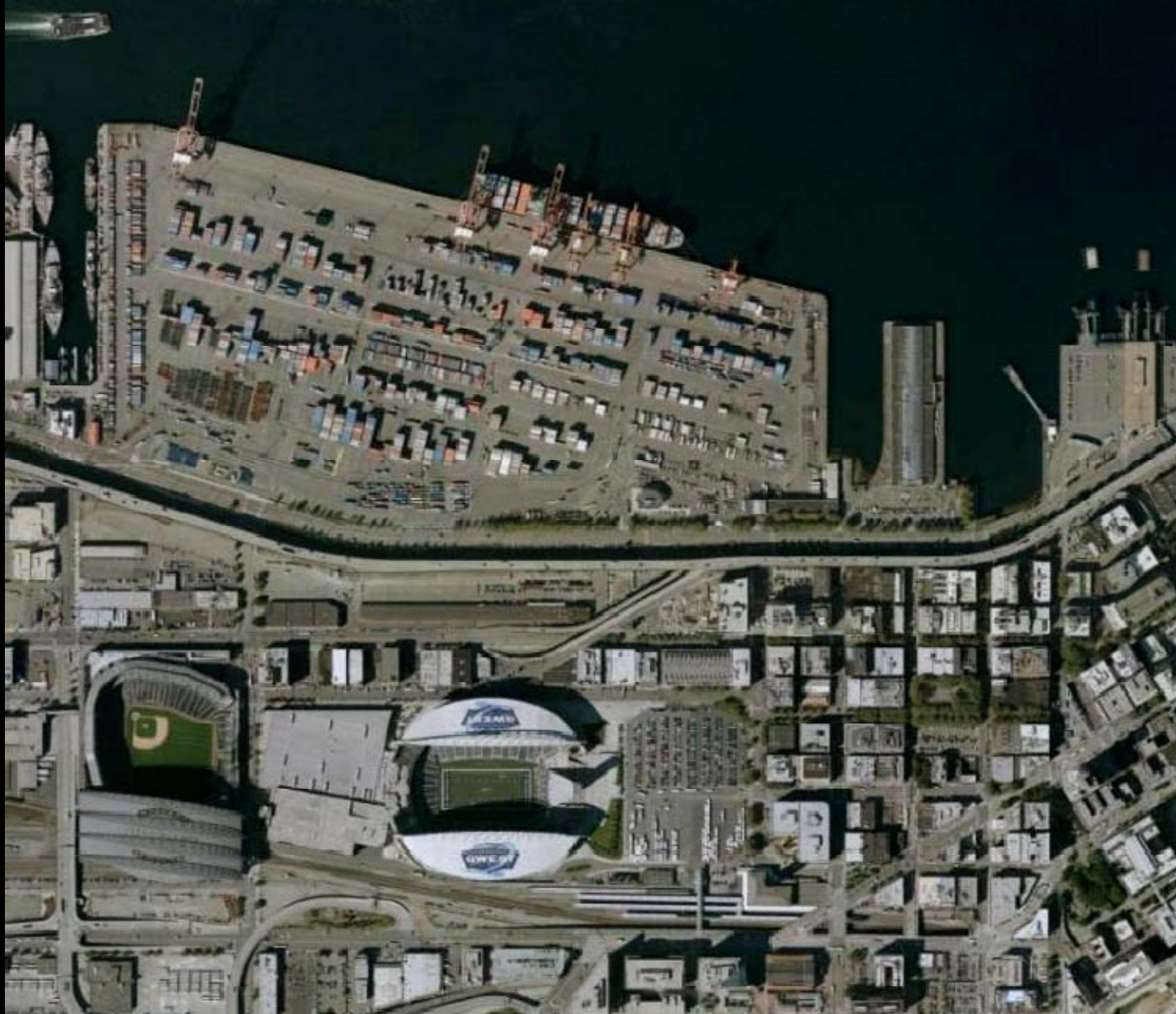
SOUTH PORTAL: VIEW FROM SOUTHWEST, RAILROAD WAY

# Alaskan Way Viaduct Replacement Project

*Prepared for Washington State Department of Transportation and City of Seattle by ROMA Design Group*

MARCH 24, 2010

# Existing South Portal Area



## The Tunnel Operations Building Design Principles :

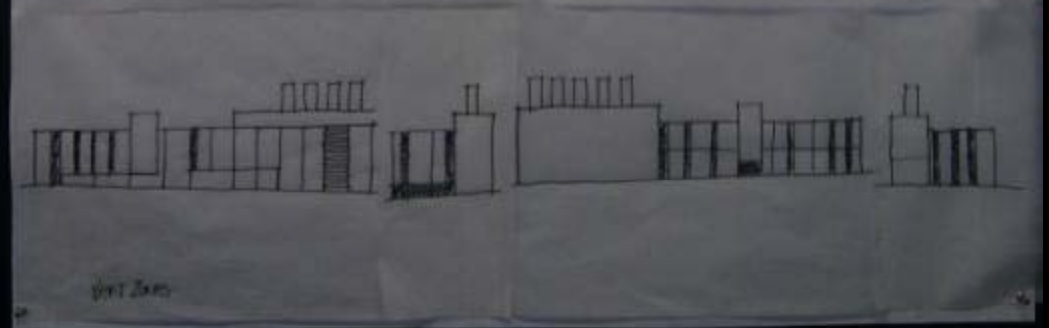
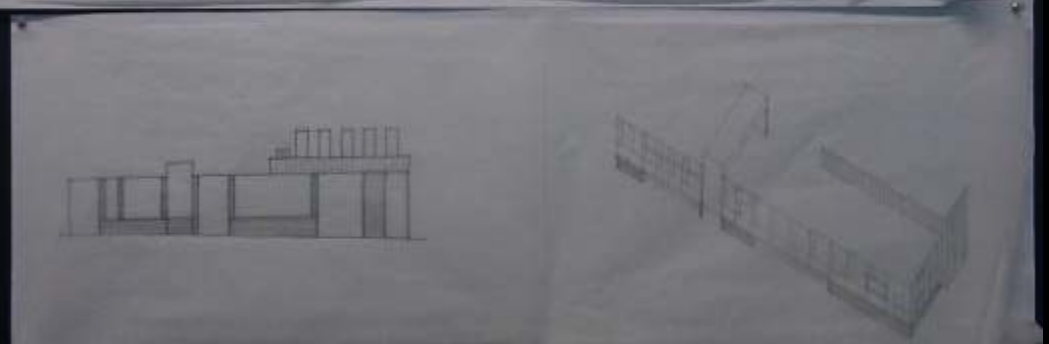
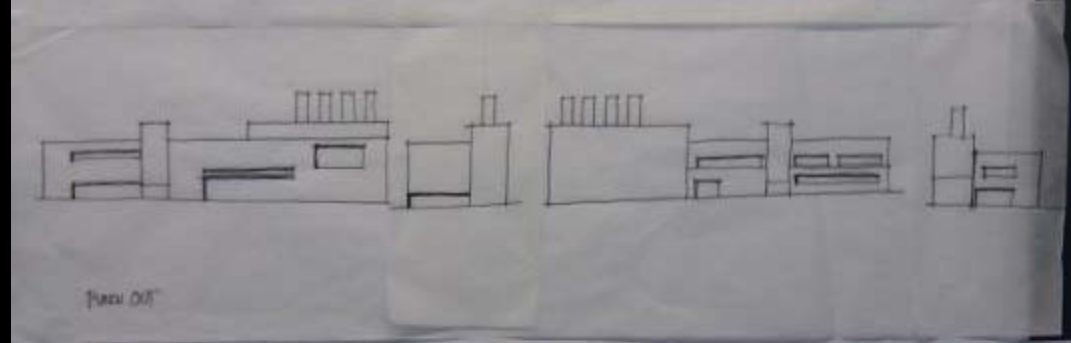
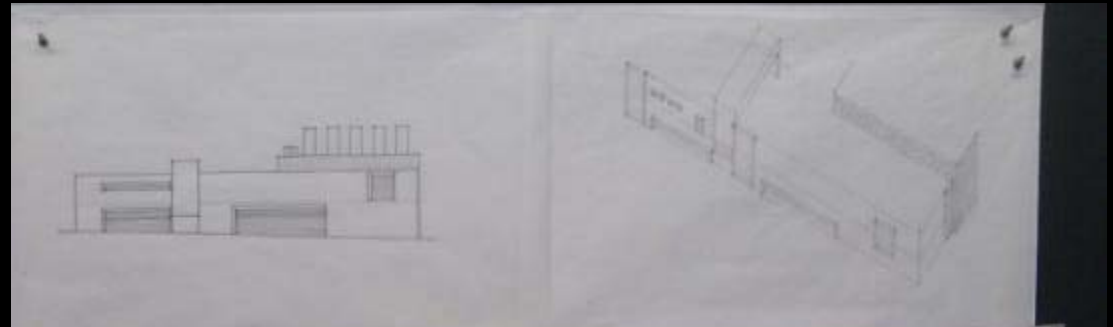
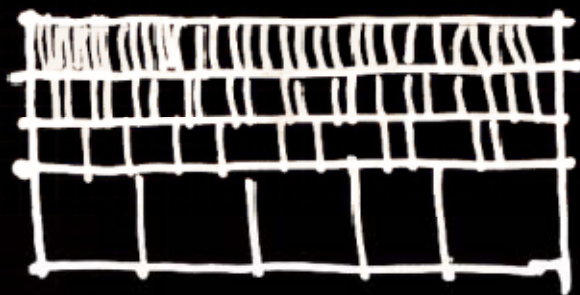
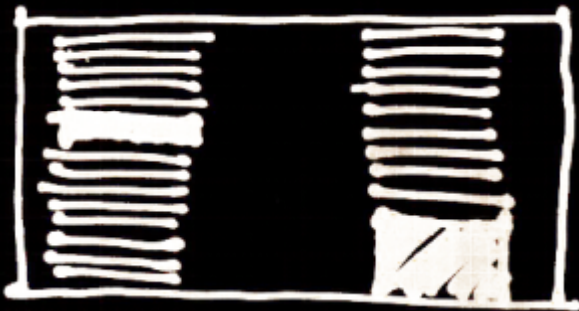
- express their purpose & reveal their primary functions
- be simple, durable & unapologetically industrial
- be massed & proportioned in relation to their context
- enhance their surroundings & reflect pedestrian scale
- relate as part of the same project, more alike than different
- be designed as part of the portal experience
- act as urban beacons to reinforce the sense of arrival
- incorporate/ express sustainable practices



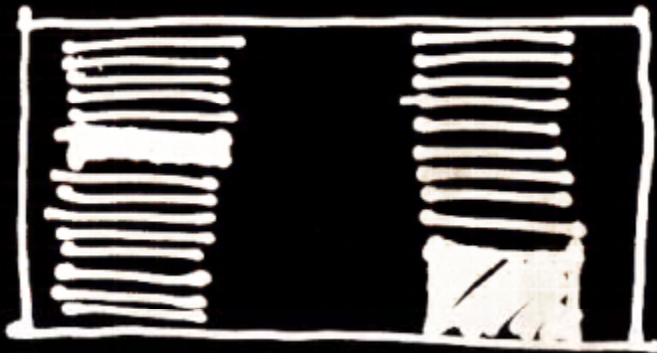
Building Design Principles



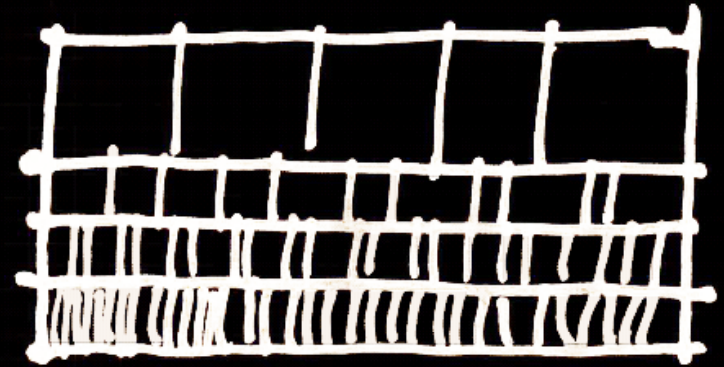
South Immediate Context



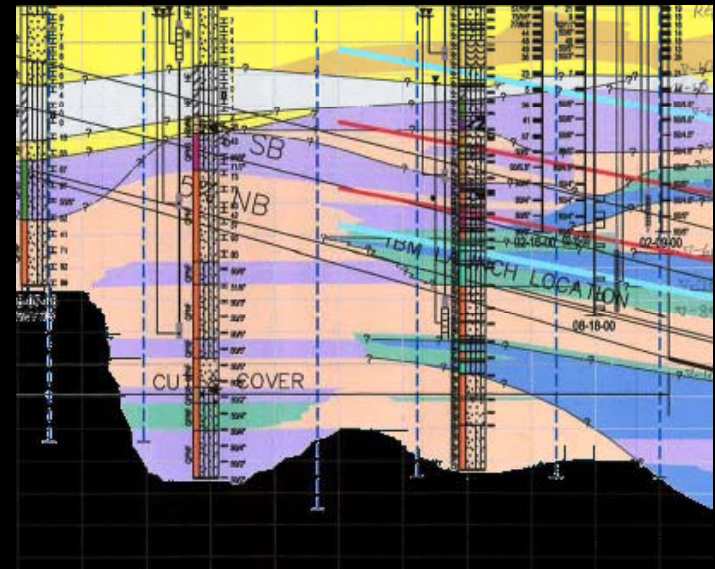
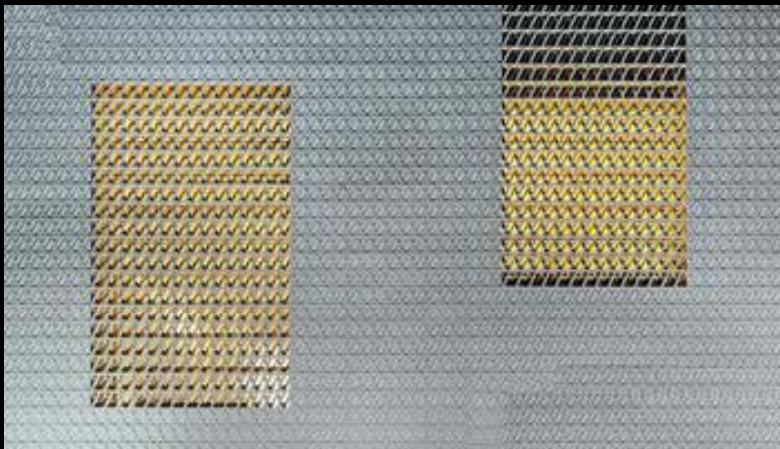
Design Evolution



CAMO



STRATA



Inspiration

Strata



Camo



South Tunnel Operations Building - view looking southeast



Strata

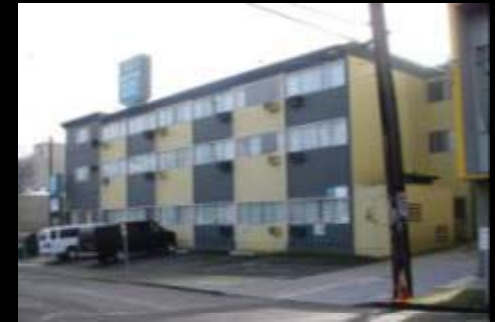


Camo



South Tunnel Operations Building - view looking northeast





North Immediate Context

Strata



Camo



North Tunnel Operations Building - view looking southeast

# Challenges

Arrival Experience

Street Level Experience

Design Integration of Landscape & Built Environment



# Issues

Roadways in Flux

Need to Buffer & Protect Pedestrians

Clearances at Openings (horizontal & vertical)

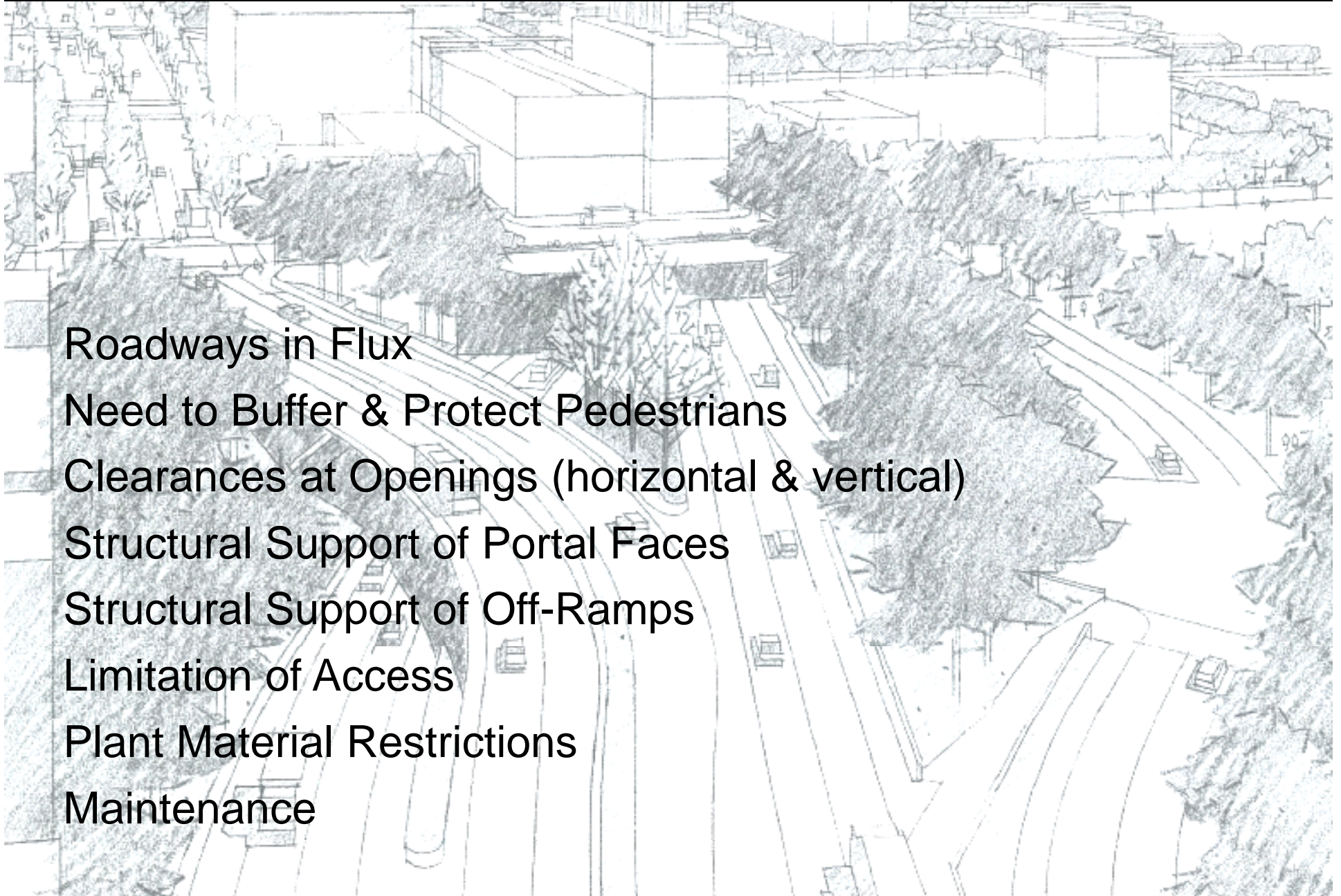
Structural Support of Portal Faces

Structural Support of Off-Ramps

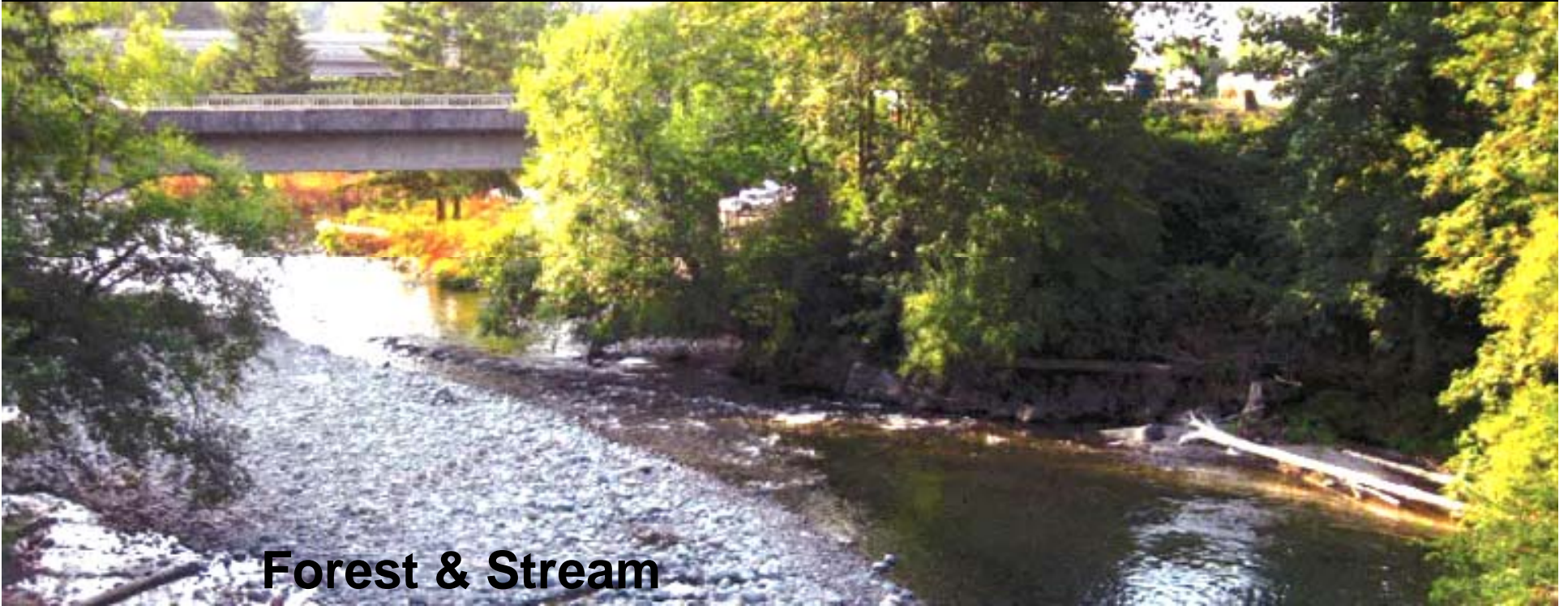
Limitation of Access

Plant Material Restrictions

Maintenance



# Precepts



## Forest & Stream

Embrace & Frame Openings

Emphasize Asymmetry

Relate to Operation Building

Light Transition

Integration of Water Retention

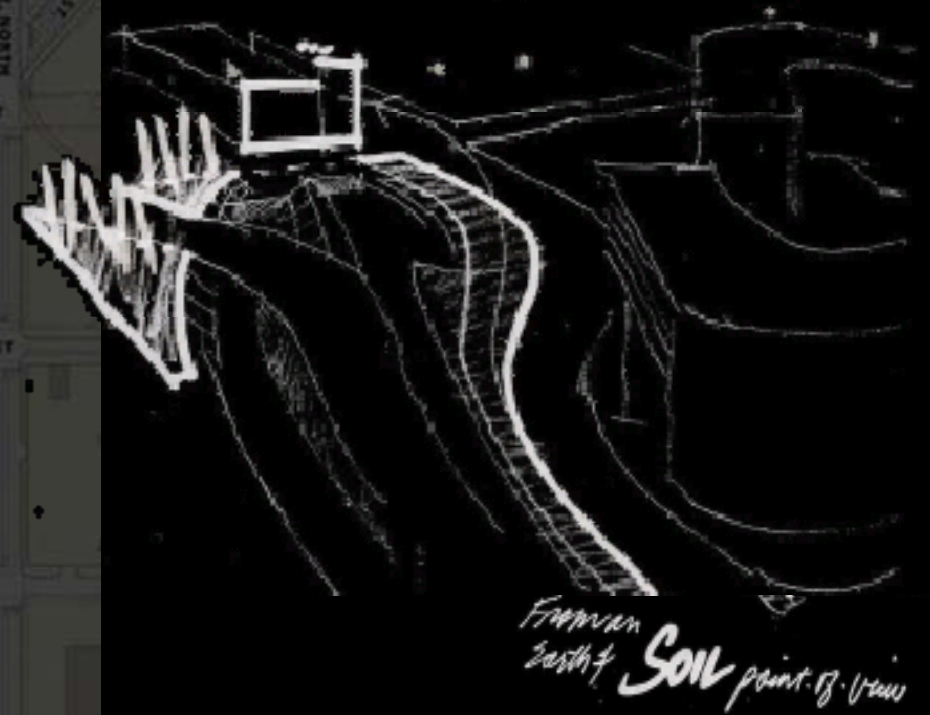
Plant for Seasonal Change

# Exploration

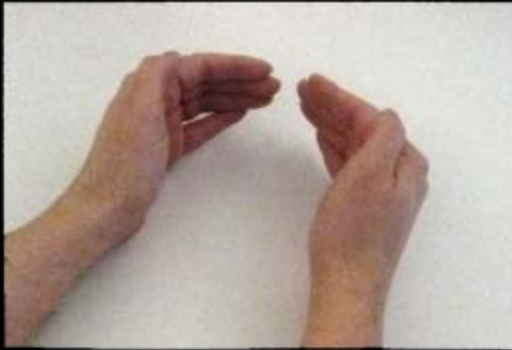




# Exploration

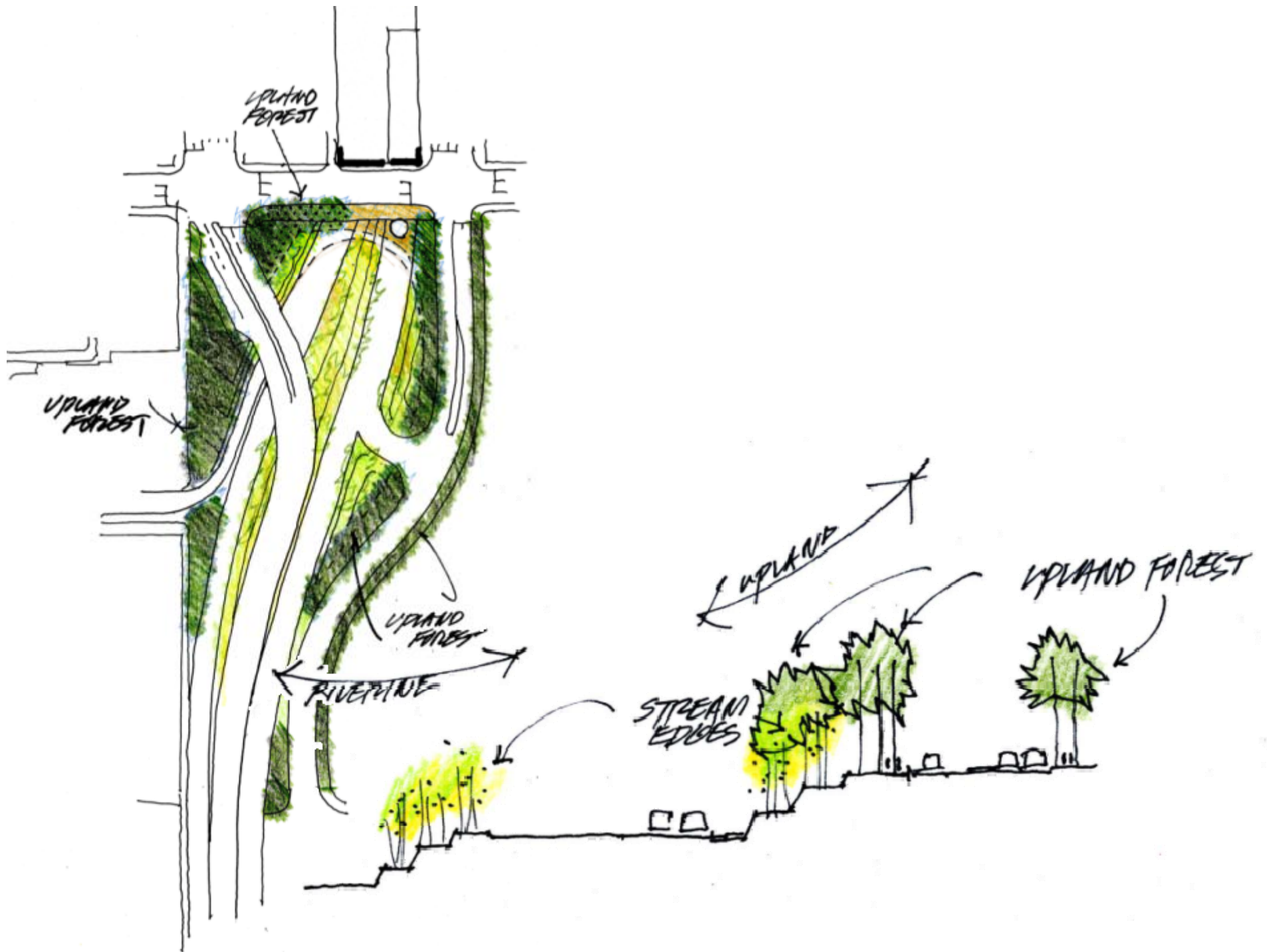


# Exploration

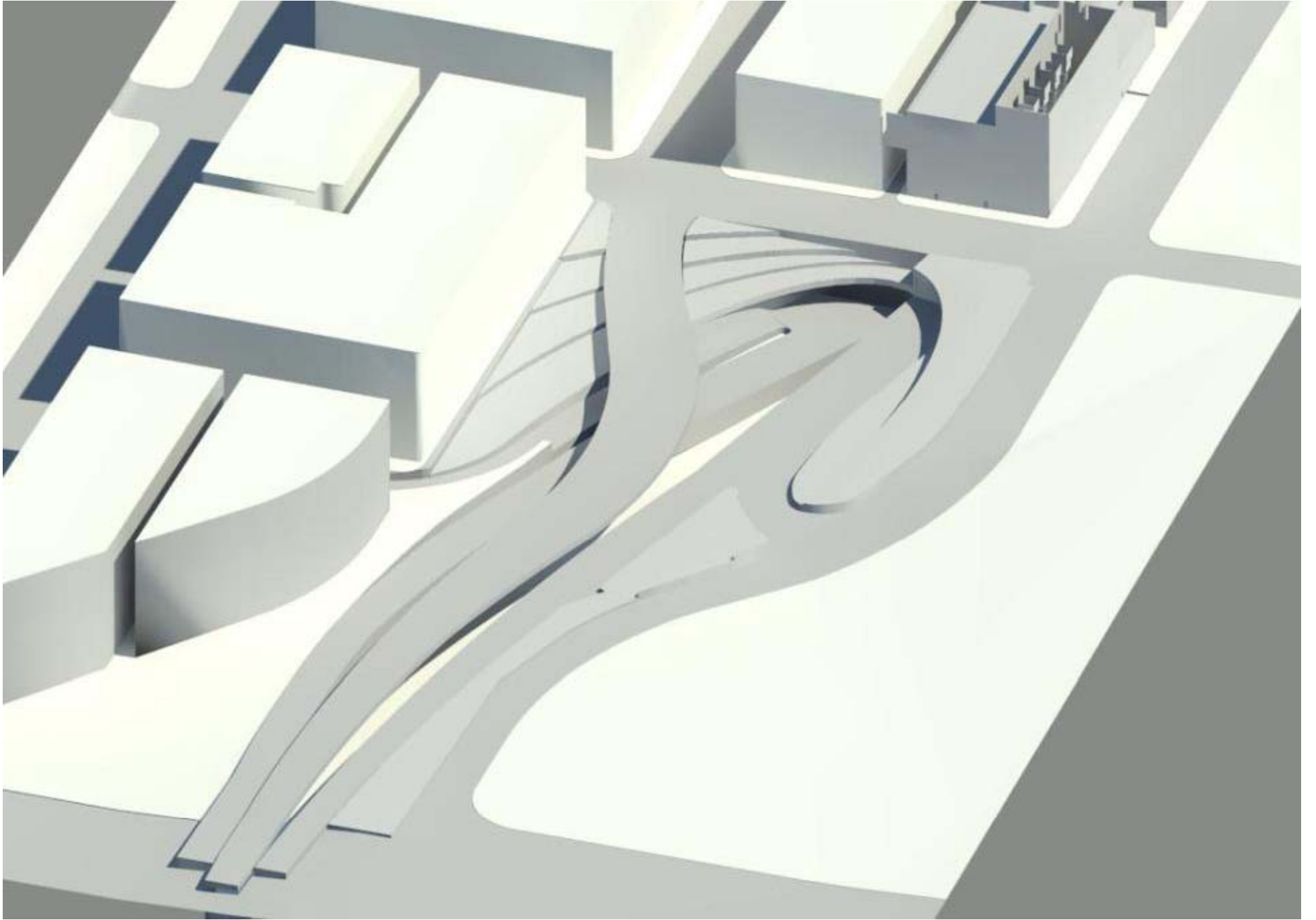


# Exploration













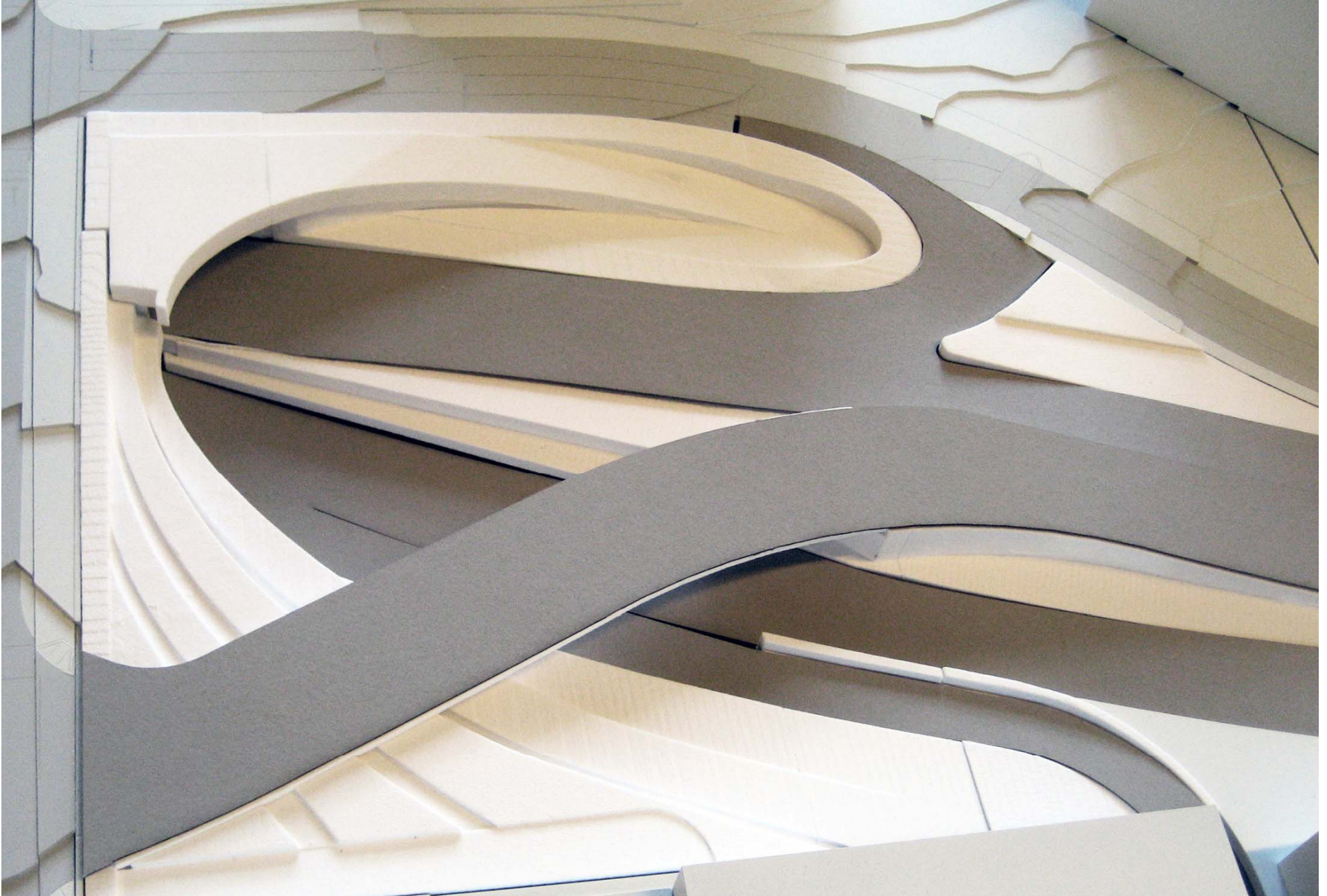








## Models presented at Meeting



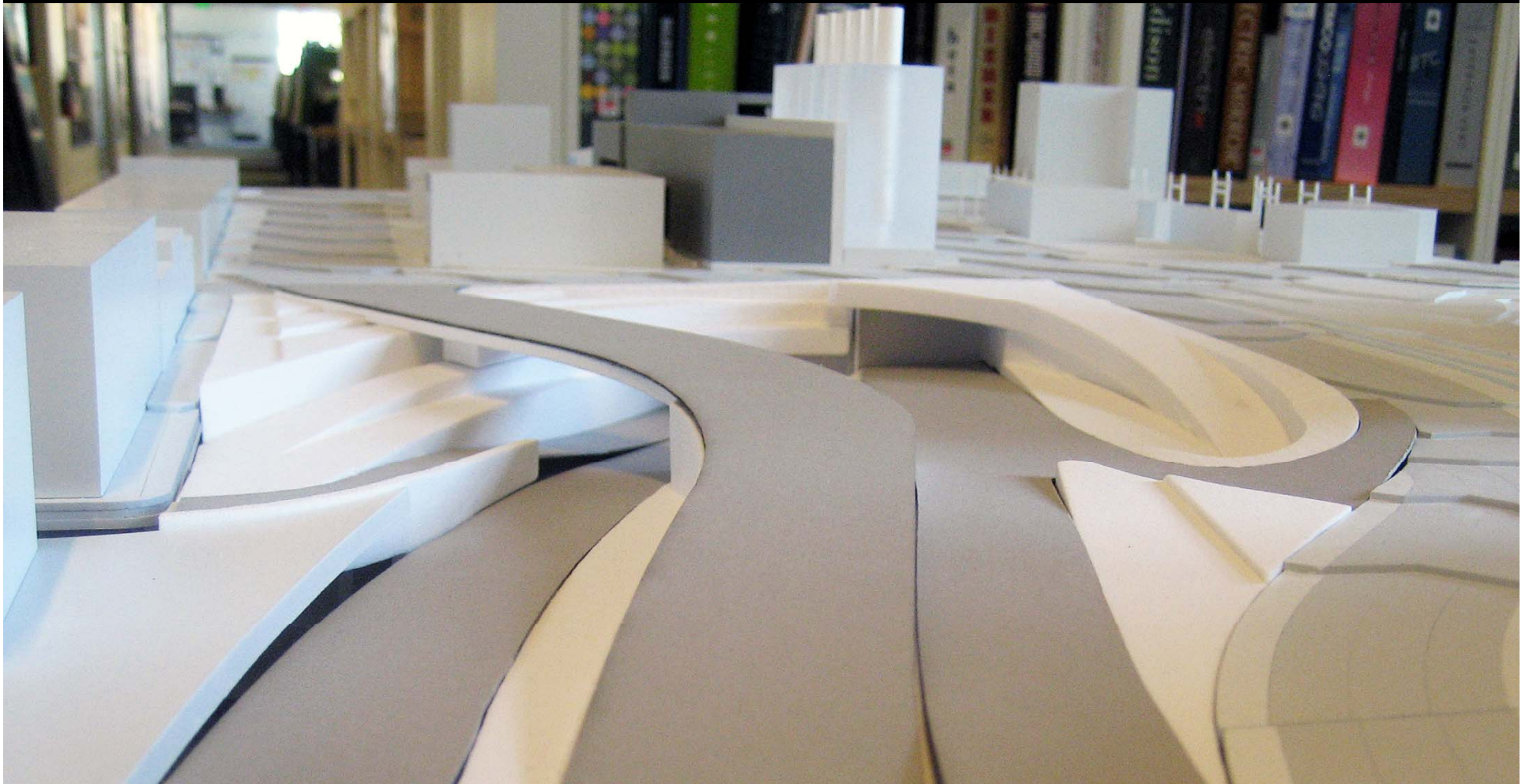
## Models presented at Meeting



## Models presented at Meeting



# Models presented at Meeting



## Models presented at Meeting

