

Alaskan Way Viaduct Replacement Program



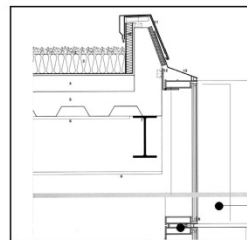
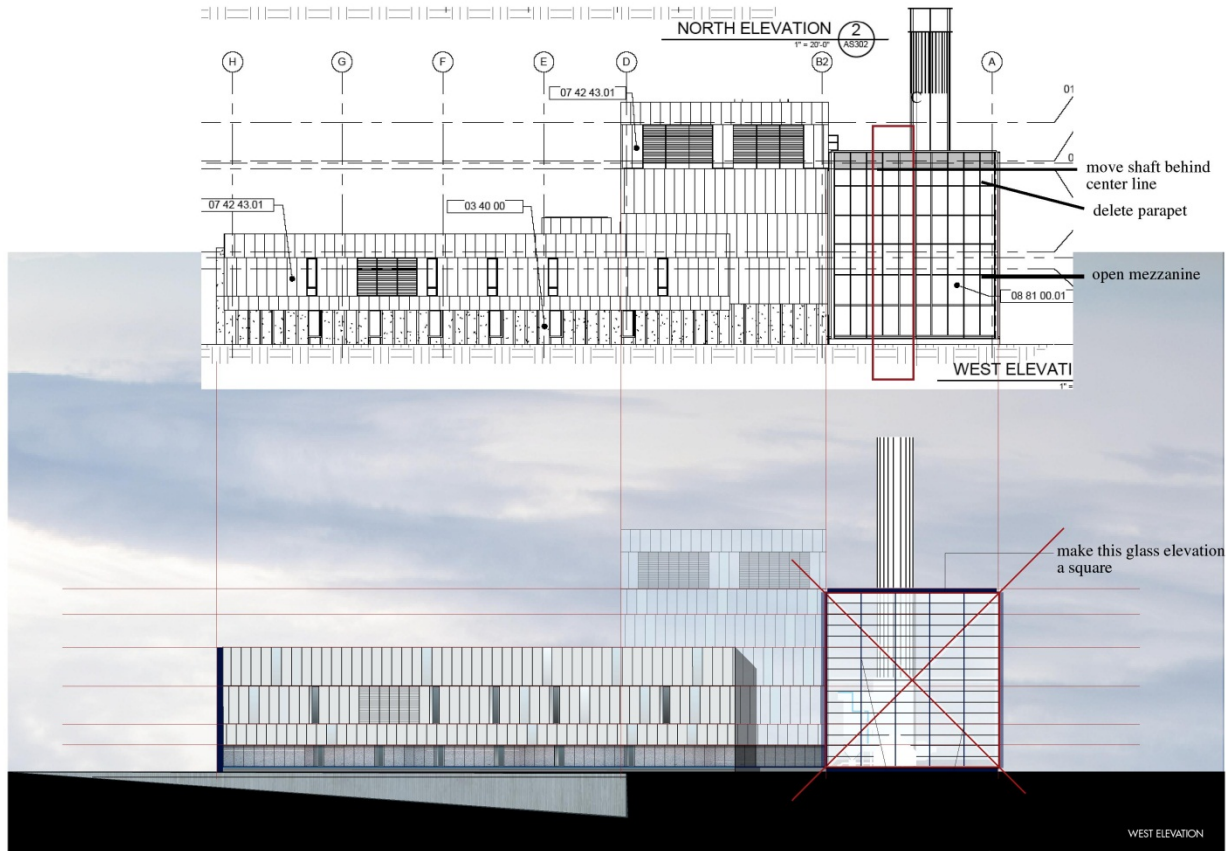
Seattle Design Commission
April 5, 2012

SDC COMMENTS - FEBRUARY 2, 2012

- Revise the form, color, lighting and design of the stacks so that they appear continuous when they pierce the roof of the fan room. If the mechanical requirements prevent the stacks from being a continuous form below and above the roof, use light, color and composition to create a design that unifies the pieces into a simple legible form.
- Integrate the design of the head house and its ground and its ground plane with the design of the operations building.
- Review and further refine the joinery of the façade so that its design and patterning of bands and joints is intentional. While the design of the joinery has improved, it needs more fine tuning.

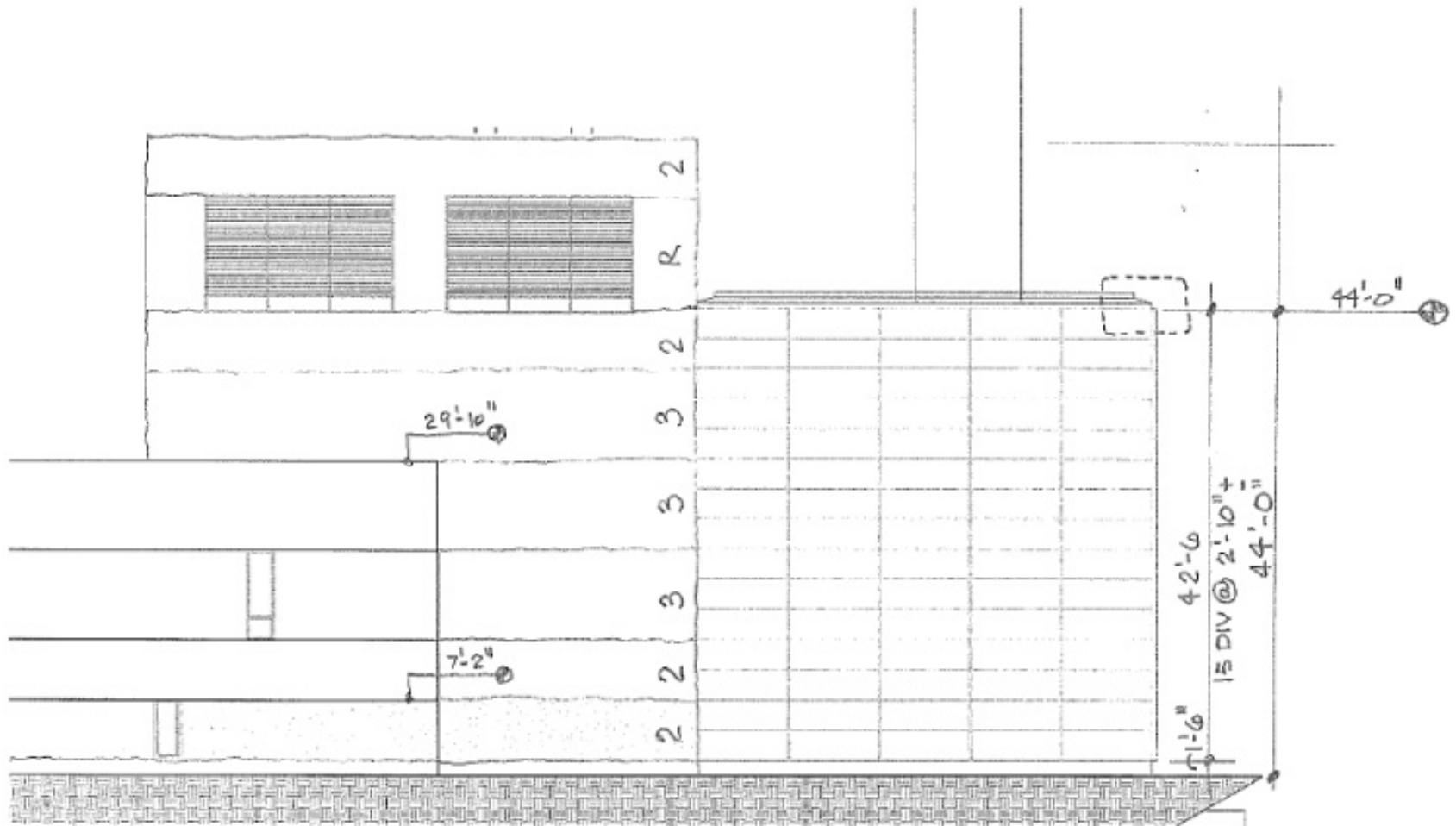
SDC COMMENTS - FEBRUARY 2, 2012

- Integrate sustainability and storm water strategies into the design. Consider placement of the storm water collection on the north side of the building.
- Simplify the detail around the garage doors.
- Remove the apron and its unique paving treatment from the base of the fan room. Consider using a sidewalk pattern instead.
- Recognize that the site boundary will likely shift as the waterfront team moves forward with its planning and design work.

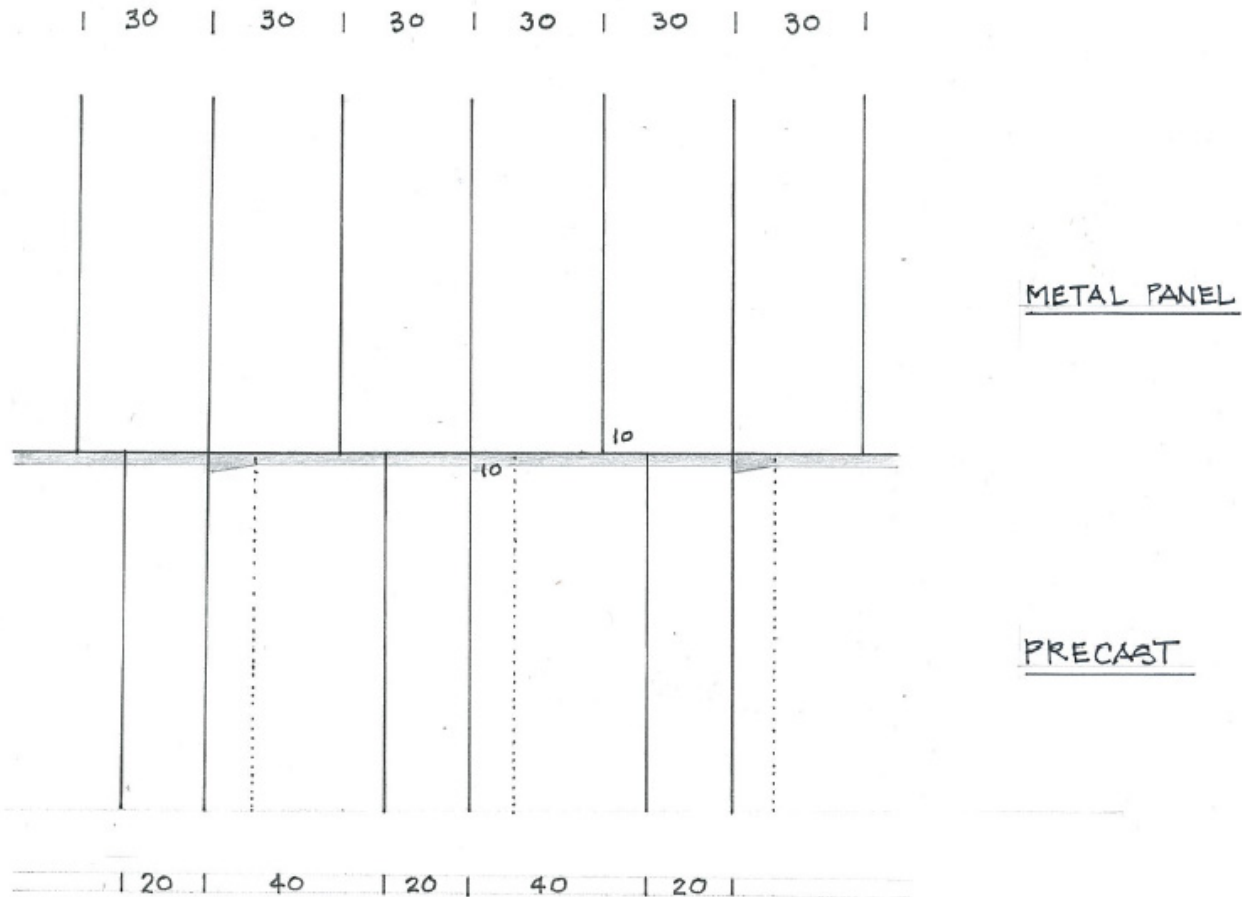


divide facade into 5 vertical bays. Vertical mullions are in front of glass and horizontal mullions are behind glass

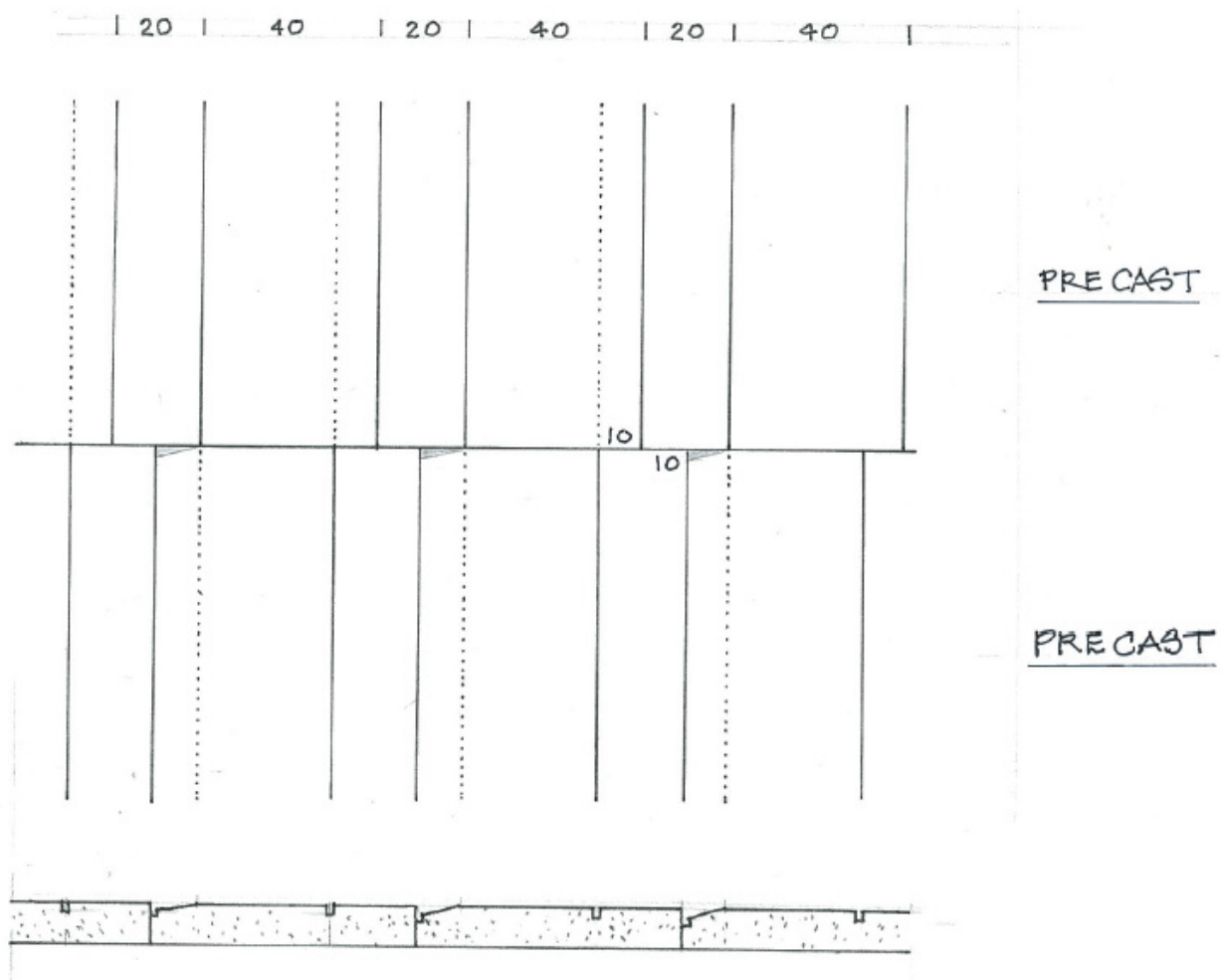
Vertical mullion
Horizontal Mullion



TYP. EXTERIOR FINISH MODULE



METAL PANEL/PRECAST MODULE



PRECAST MODULE - 40"/20"





A color calibration bar consisting of a series of yellow squares of varying shades, followed by the text "SAFETY YELLOW" in bold black letters. Below the text is a solid yellow rectangular area with a faint watermark that reads "ART-PAINTS.COM".



NORTH OPERATIONS BUILDING





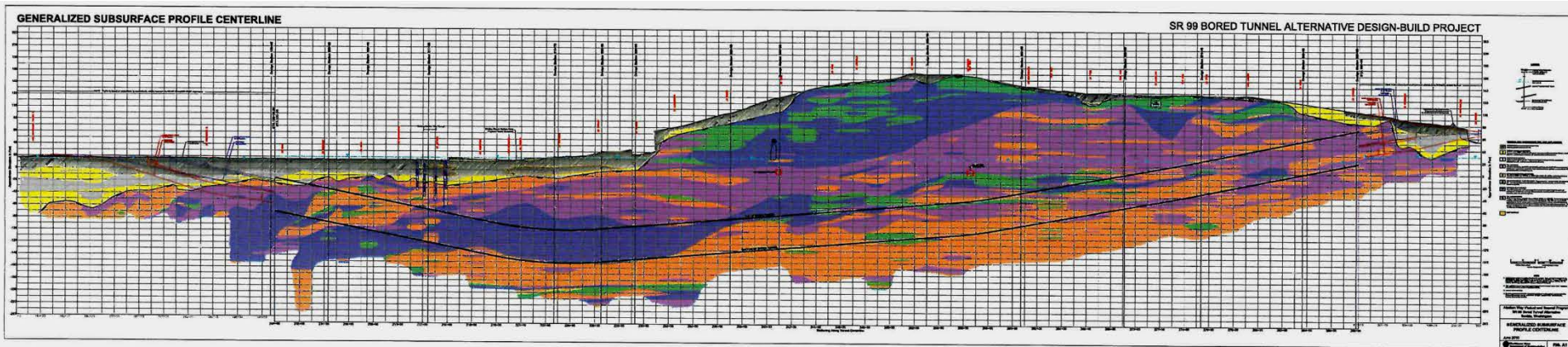




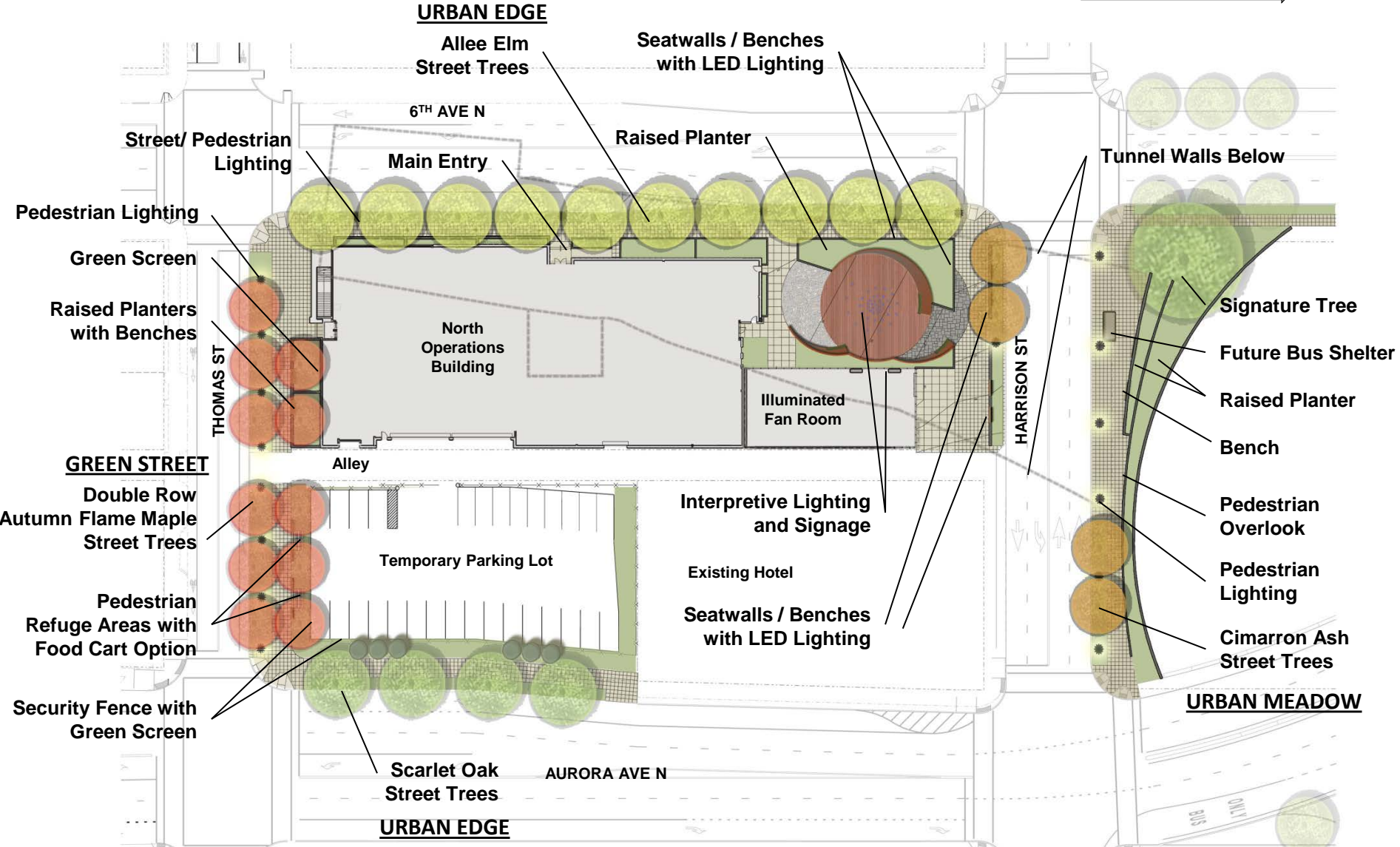


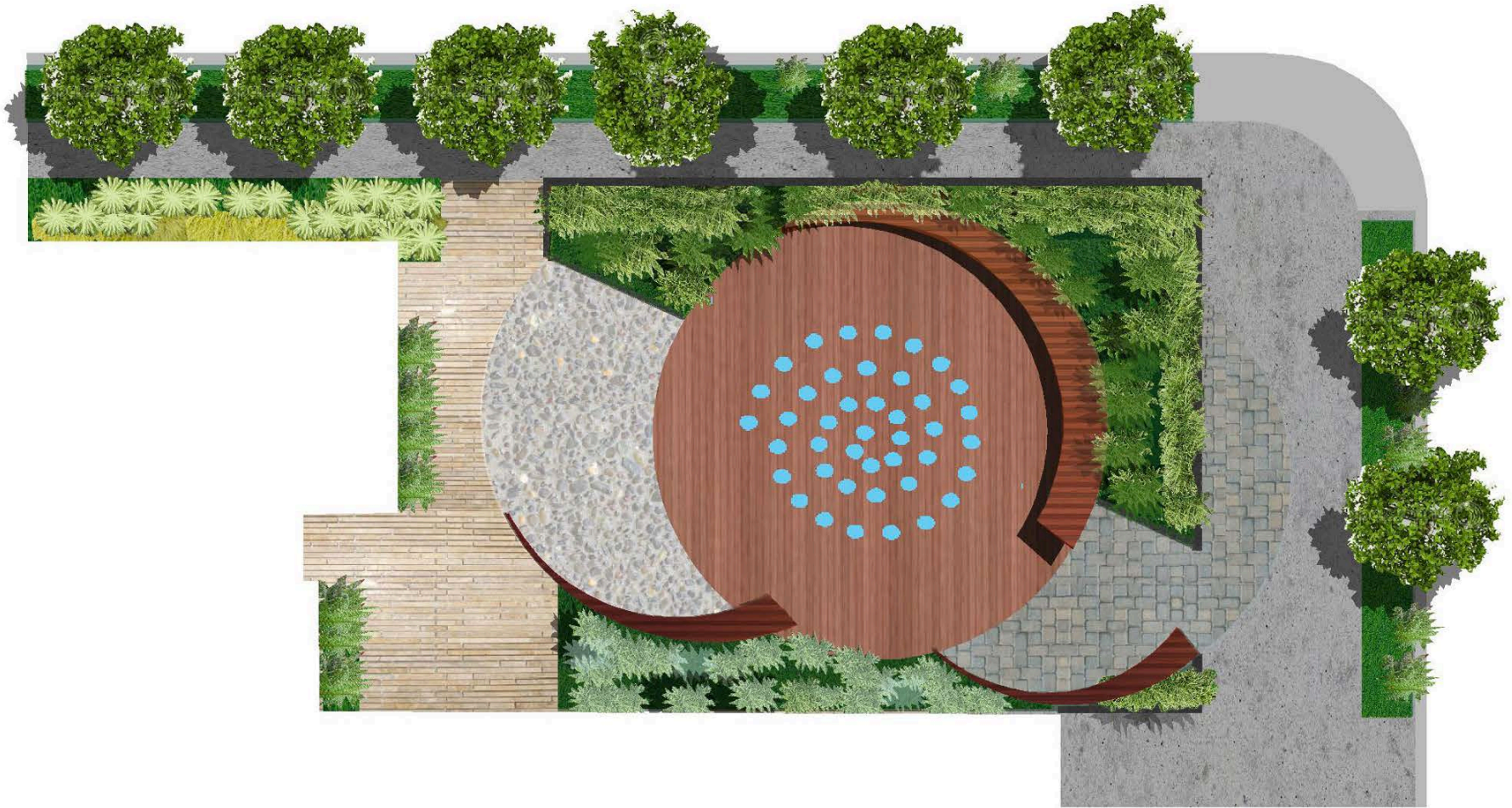






Scale: Not to Scale →





Scale: Not to Scale

Soil Stratification Inspiration



Concrete Planter Walls



Curved Wood Bench



Corten Steel Walls

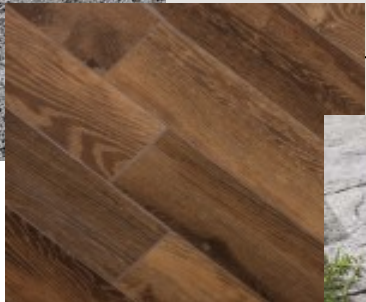


Concrete Seatwalls / Benches with LED Lighting

6TH AVE N



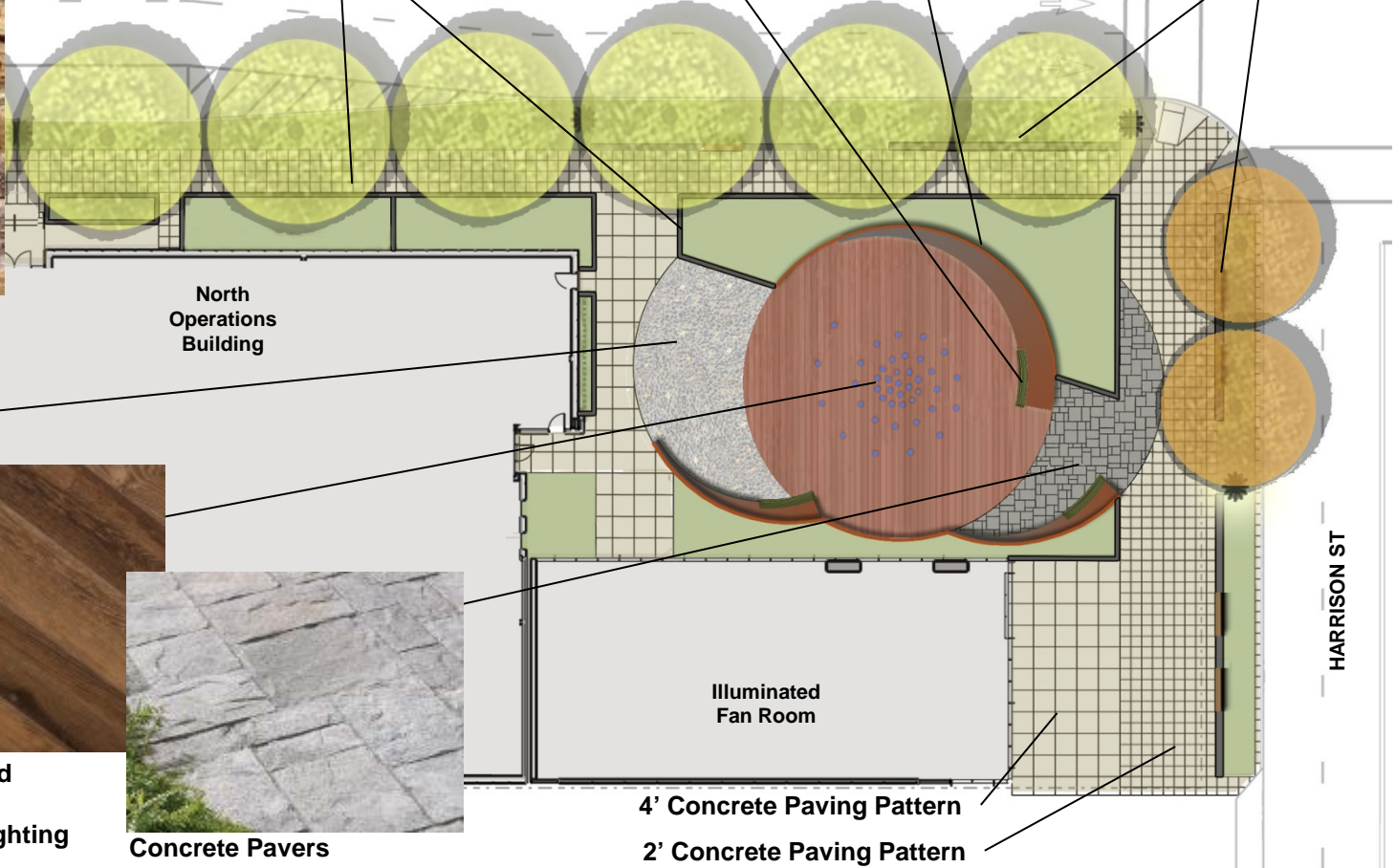
Exposed Aggregate



Recycled Wood Product with Interpretive Lighting



Concrete Pavers



HARRISON ST



Scale: Not to Scale



Allee Elm

URBAN EDGE



Dwarf Pavement Rose



Mt. Vernon Laurel



Privet Honeysuckle



Dwarf Japanese Holly



Little Bunny Fountain Grass



Kelsey Dogwood



Autumn Moor Grass

URBAN MEADOW



Cimarron Ash



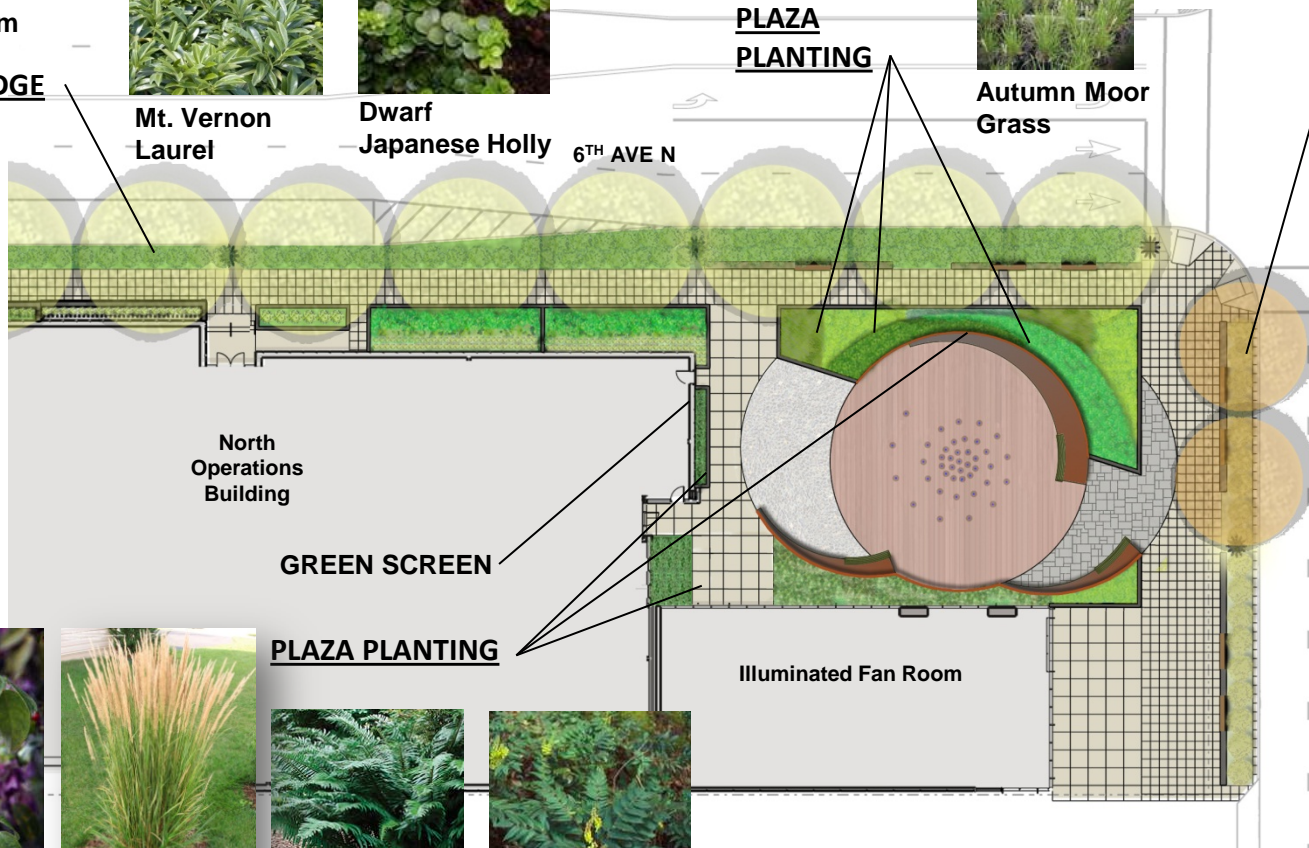
Little Bunny Fountain Grass



Autumn Moor Grass



Ice Dance Carex



Sausage Vine



Avalanche Reed Grass



Sword Fern



Low Oregon Grape

GREEN STREET



Autumn Flame Maple



Heuchera



Ice Dance Carex



Low Oregon Grape



Kelsey Dogwood



Privet Honeysuckle



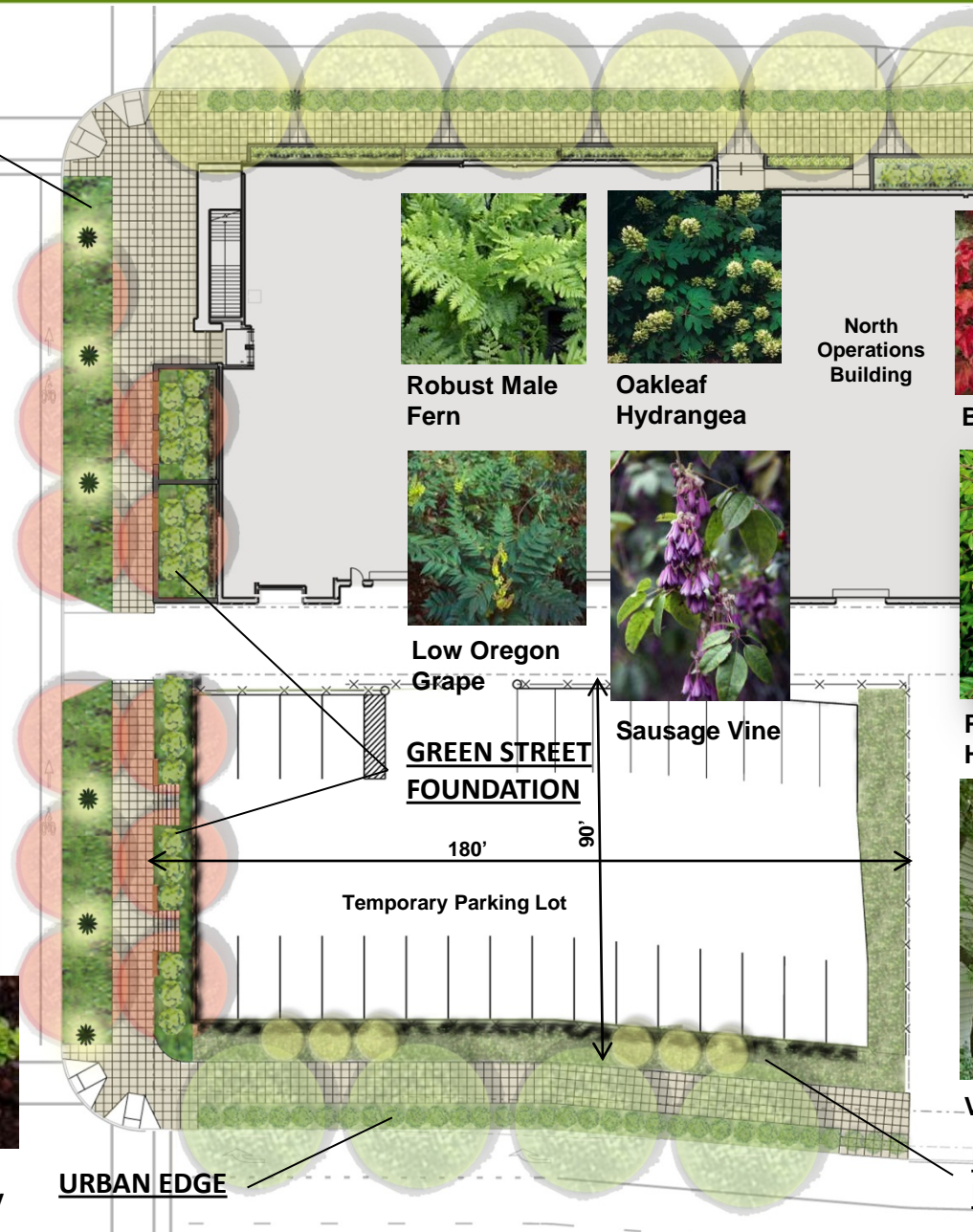
Scarlet Oak



Mt. Vernon Laurel



Dwarf Japanese Holly



Robust Male Fern



Oakleaf Hydrangea

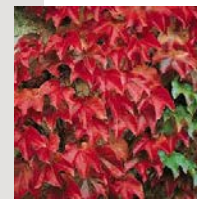


Low Oregon Grape



Sausage Vine

North Operations Building



Boston Ivy



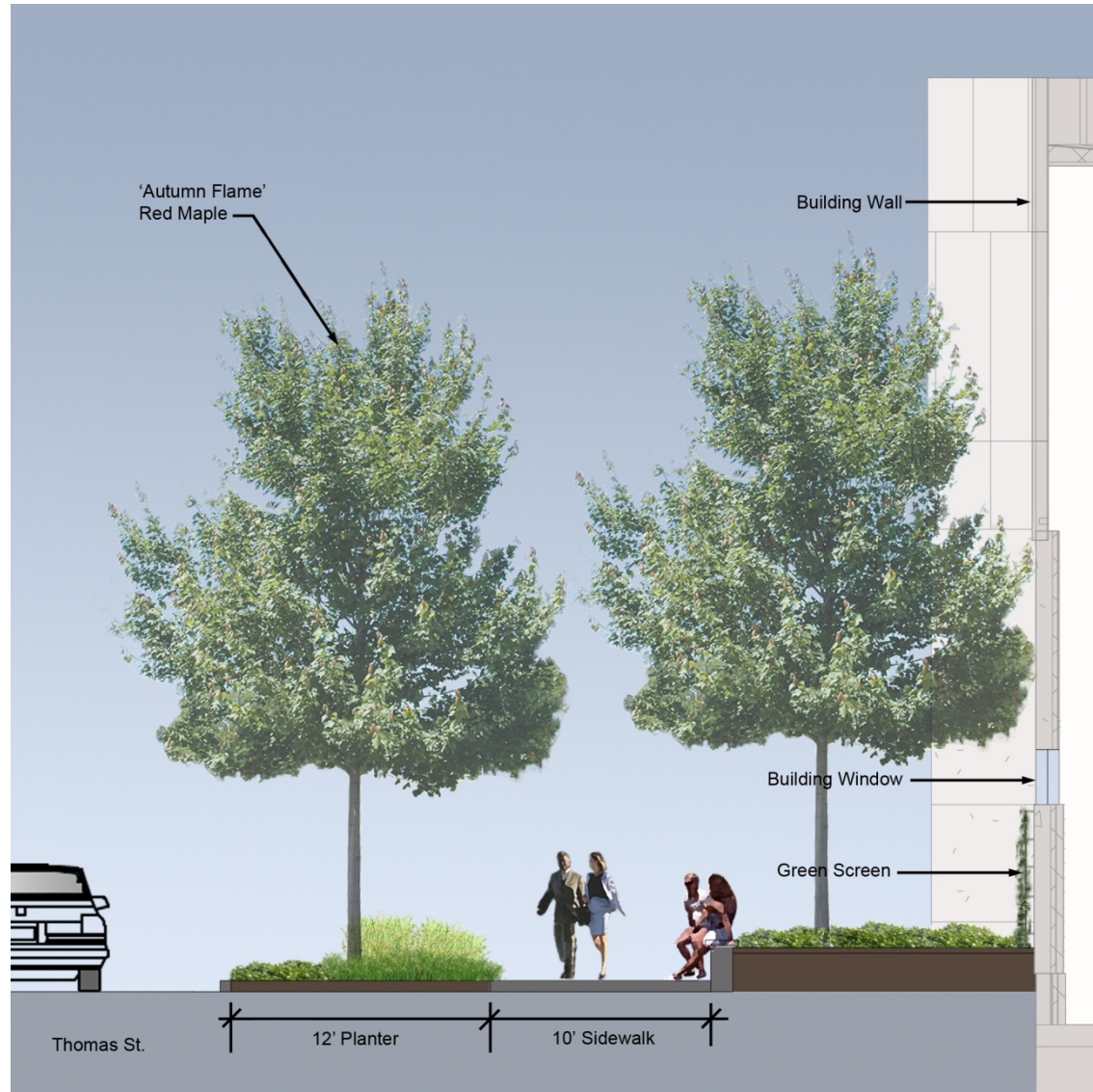
Privet Honeysuckle



Vine Maple

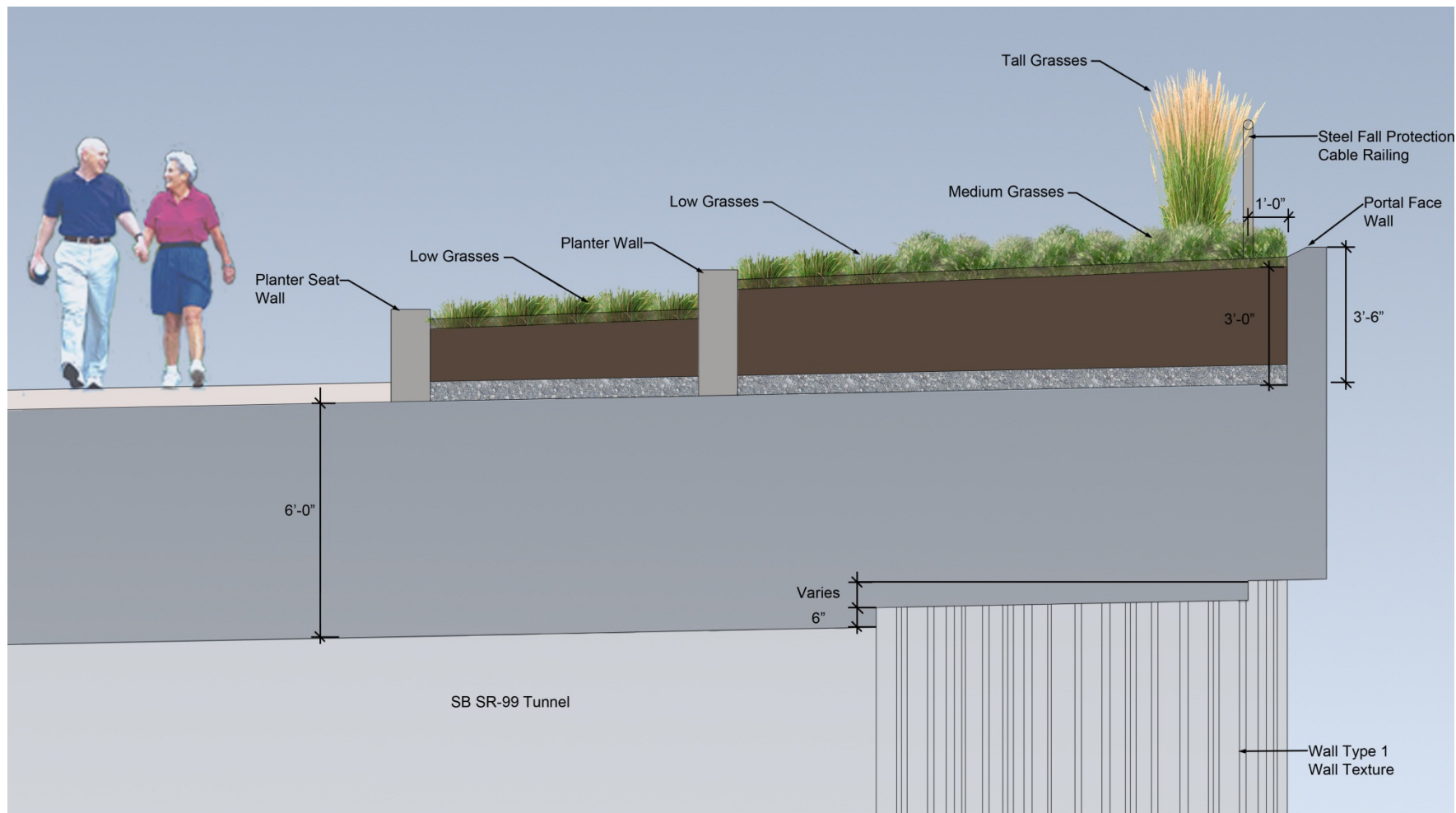
URBAN EDGE

PARKING LOT BUFFER

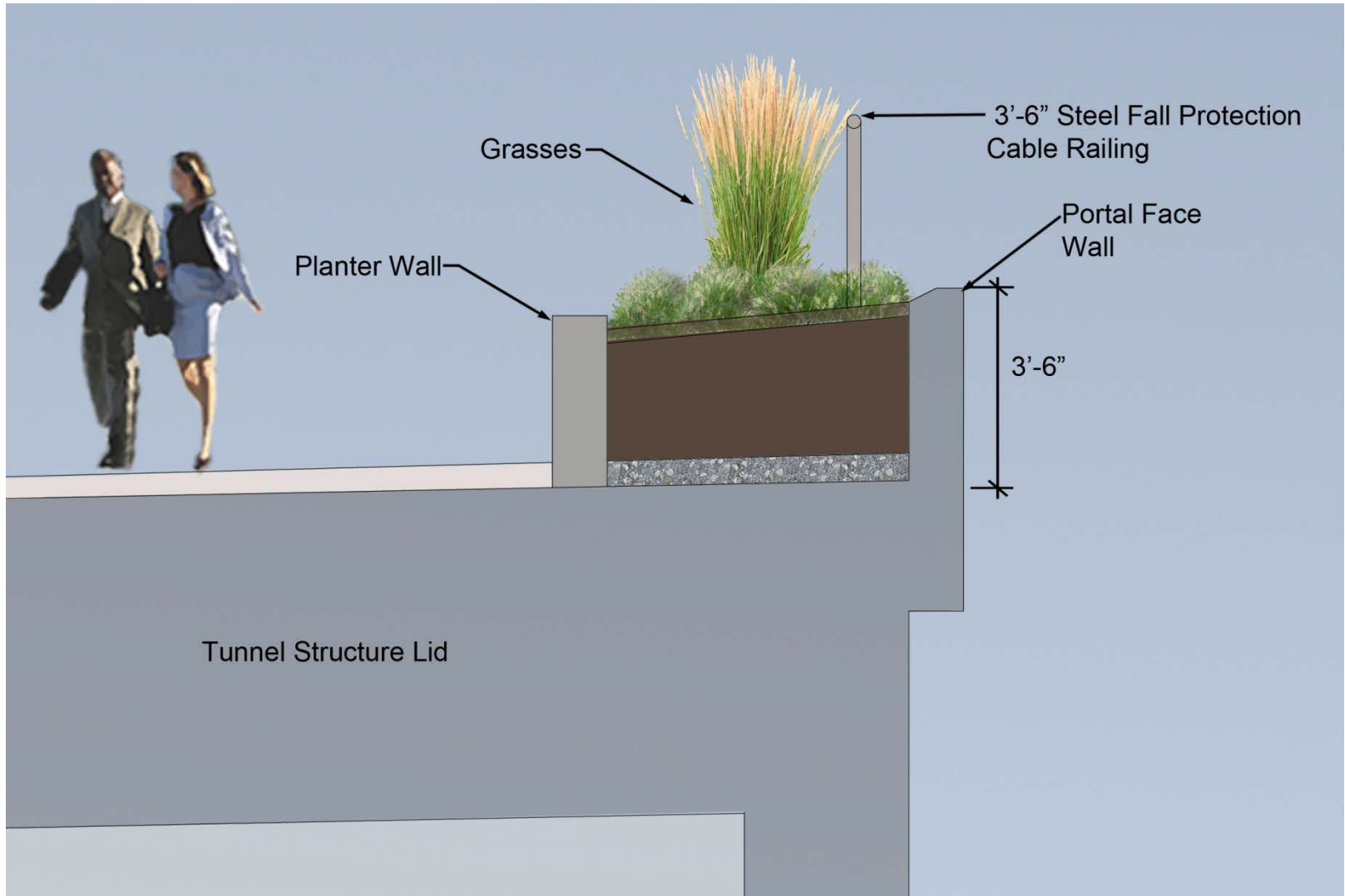




Scale: Not to Scale



Scale: Not to Scale



Scale: Not to Scale

