



2026 E Madison Street
Seattle WA 98122

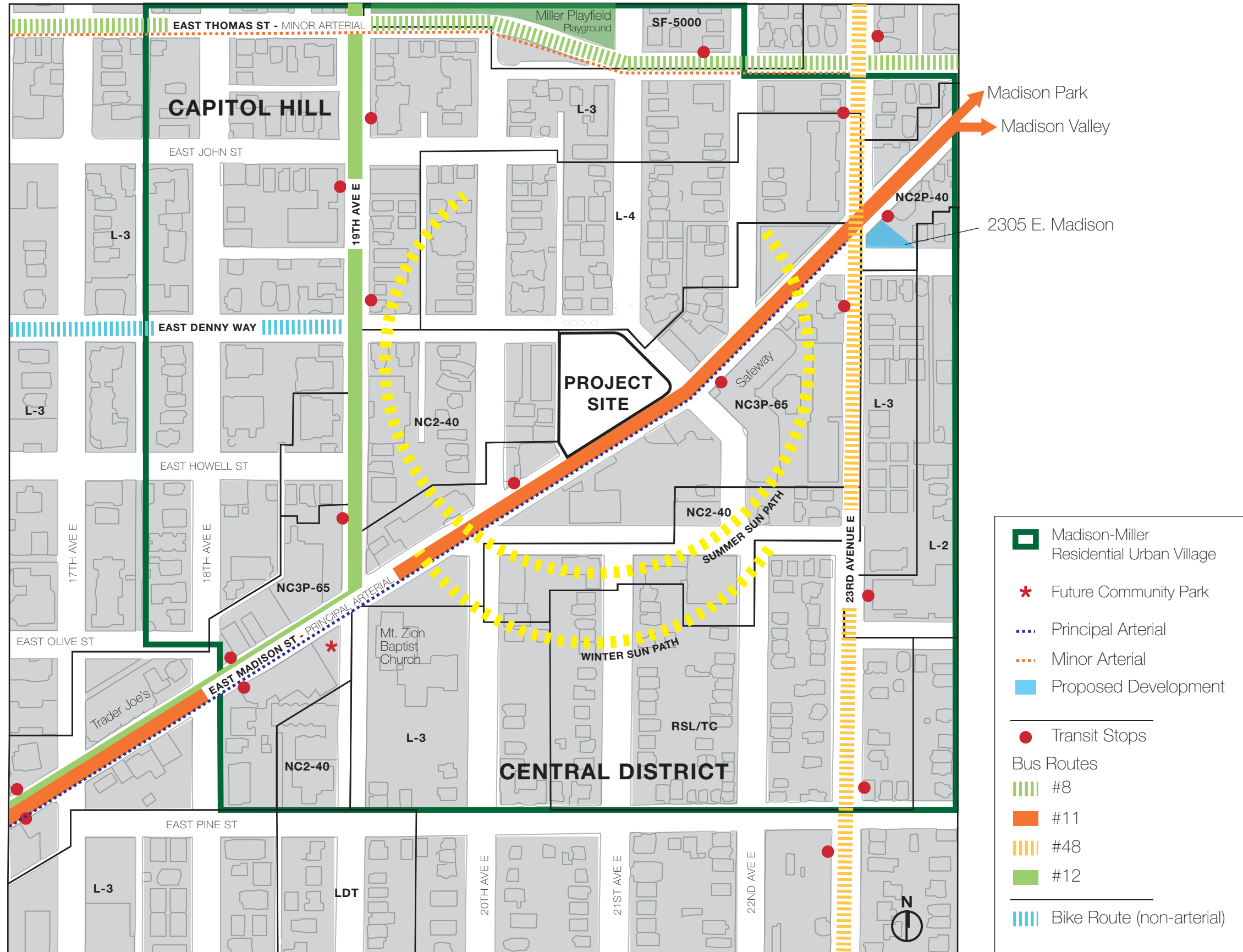
Seattle Design Commission Presentation
July 1, 2014



SITE CONTEXT AERIAL PHOTO



SITE CONTEXT PROJECT LOCATION

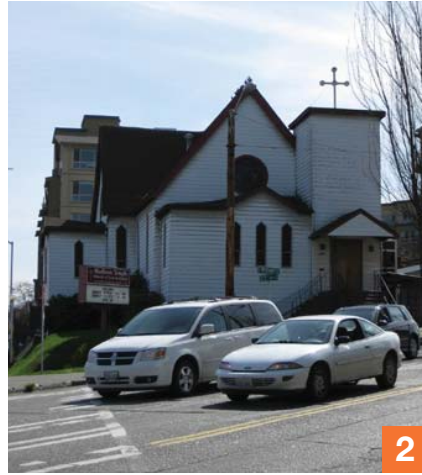


SITE CONTEXT

FIGURE-GROUND DIAGRAM

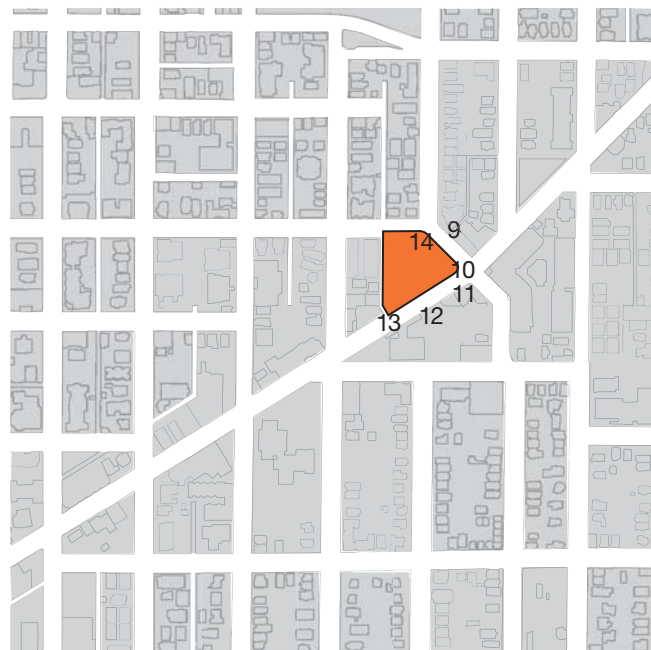


SITE CONTEXT EXISTING NEIGHBORHOOD CONDITIONS



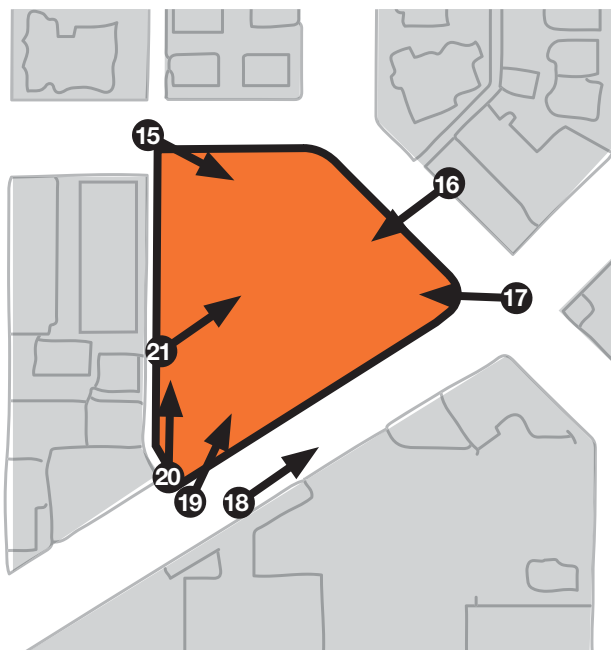
- 1 Madison Valley
- 2 Madison Temple
- 3 El Gallito Restaurant
- 4 McKinney Manor Apartments
- 5 Hearing Speach & Deafness Center
- 6 Madison Apartments & Trader Joe's
- 7 17th Avenue & East Olive Street
- 8 Madison Crossings & Madison Market

SITE CONTEXT EXISTING ADJACENT CONDITIONS



- 9 Views to the east along E Madison St
- 10 Summit Apartments
- 11 Former location of the Twilight Exit
- 12 Planned Parenthood
- 13 Neighboring Office Building
- 14 Bridgestone Tire Shop

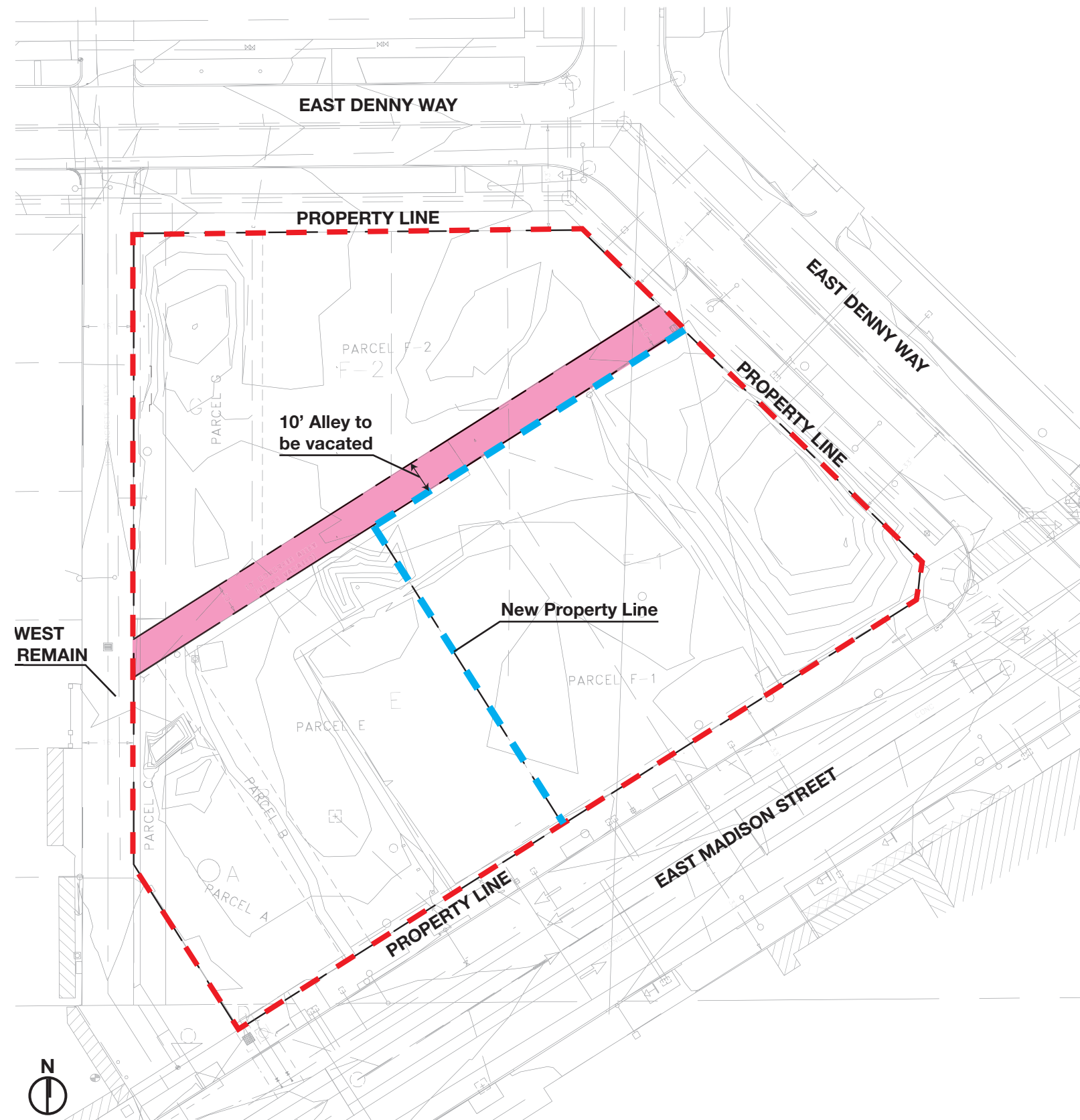
SITE CONTEXT EXISTING SITE CONDITIONS



- 15 View from NW corner of Project Location
- 16 View to SW from E. Denny Way
- 17 View West from Intersection of E. Madison St and 22nd Ave E.
- 18 View NE along Sidewalk at E. Madison St.
- 19 View from SW corner of Project Location
- 20 View North along Alley
- 21 View NE from Alley



SITE CONTEXT ALLEY VACATION PLAN



ALLEY VACATION CONDITIONS

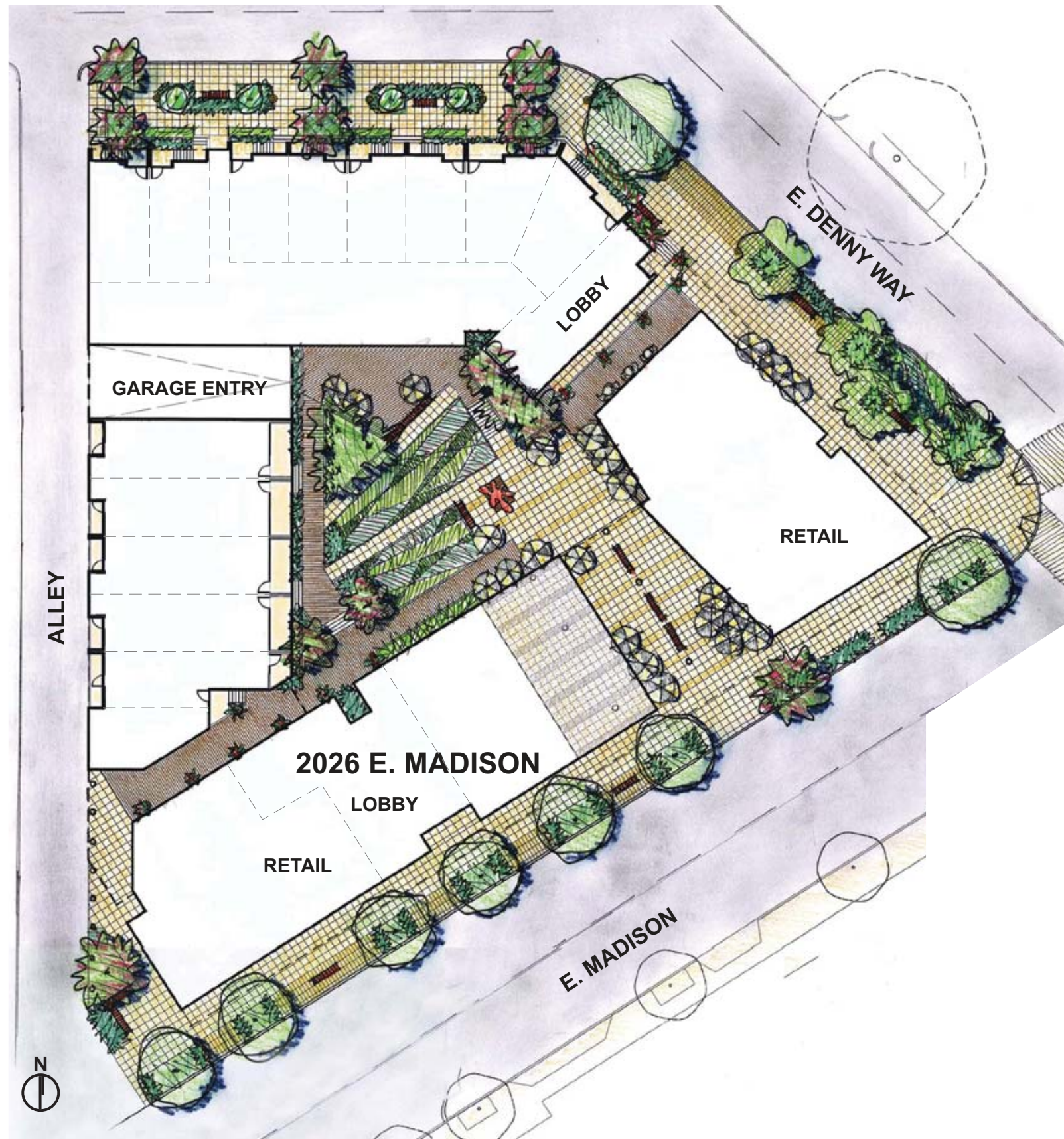
EXISTING ALLEY:

1. Alignment
 - a. Provides connection between West Alley and E Denny Way
2. Dimensions
 - a. 10'-0" Concrete Alley
3. Utilities
 - a. All existing power and communication lines have been disconnected

PROPOSED PLAN:

1. Alignment
 - a. New pathway provides 24 hour access through the site and maintains connection between West Alley and E Denny Way
2. Dimensions
 - a. Concrete pathway varies from 8'-0" - 12'-0"
3. Utilities
 - a. All new power and communication lines will be located on E Denny Way. This is currently under review with Seattle City Light.

2009 DESIGN SITE PLAN



PUBLIC BENEFIT MATRIX

Public Benefit	Description	2009 Proposal	
1	Public Open Space - On Site		
	Square Footage of Public Benefit Space		11,700 SF
	Trees		8
	Planting Improvements		
	Planting Area		2,060 SF
	Turf Area		0
	Pedestrian Hardscape		9,640 SF
	Fixed Seating (Seatwalls, Stone, Conc. Perches)		30 SF
2	Pedestrian Signage		Yes
	Pedestrian Scale Lighting		Yes
	Public Art or Water Feature		
	Context Specific Art Features		Yes

2009 DESIGN ELEVATIONS

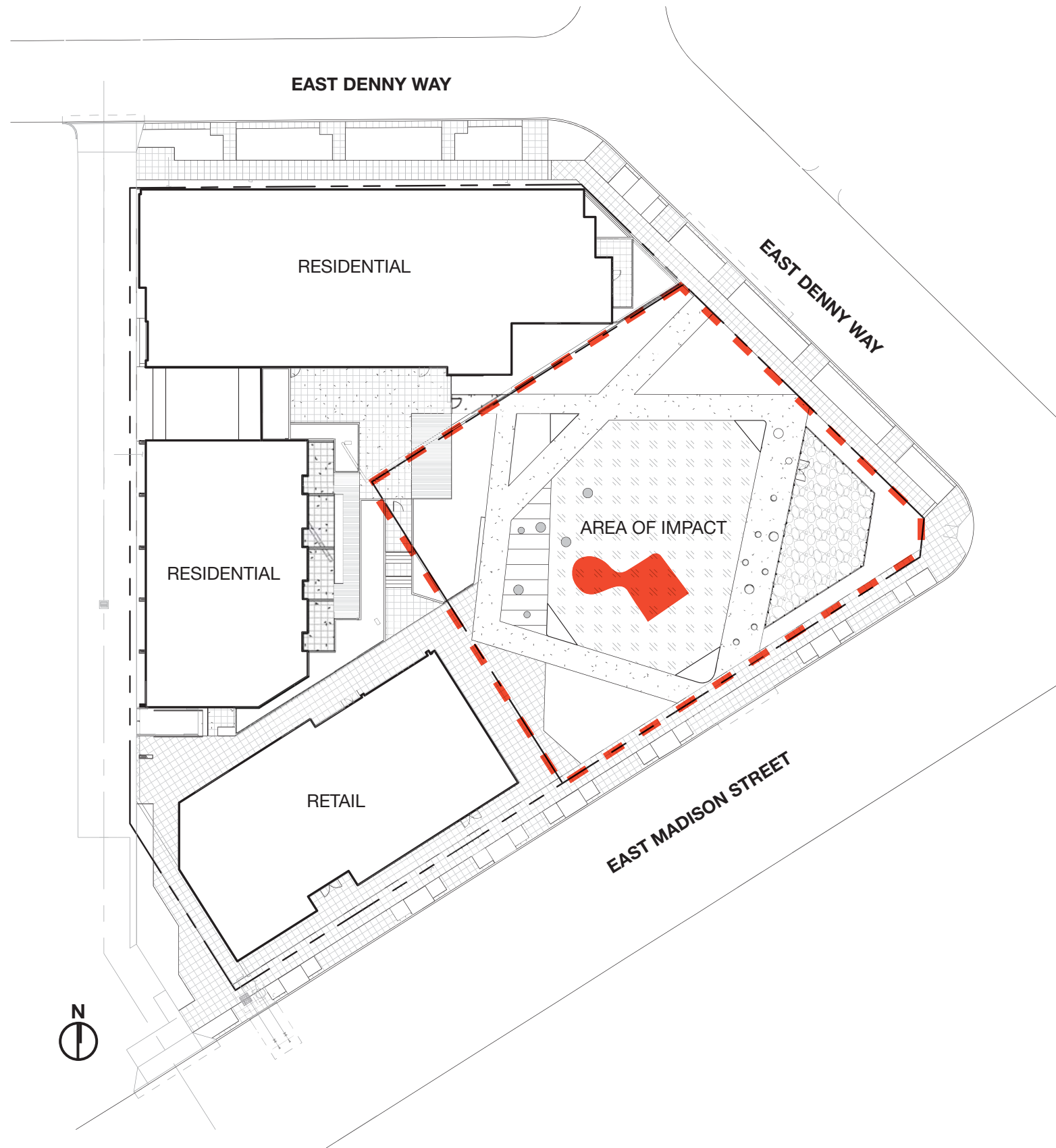


North Elevation



South Elevation

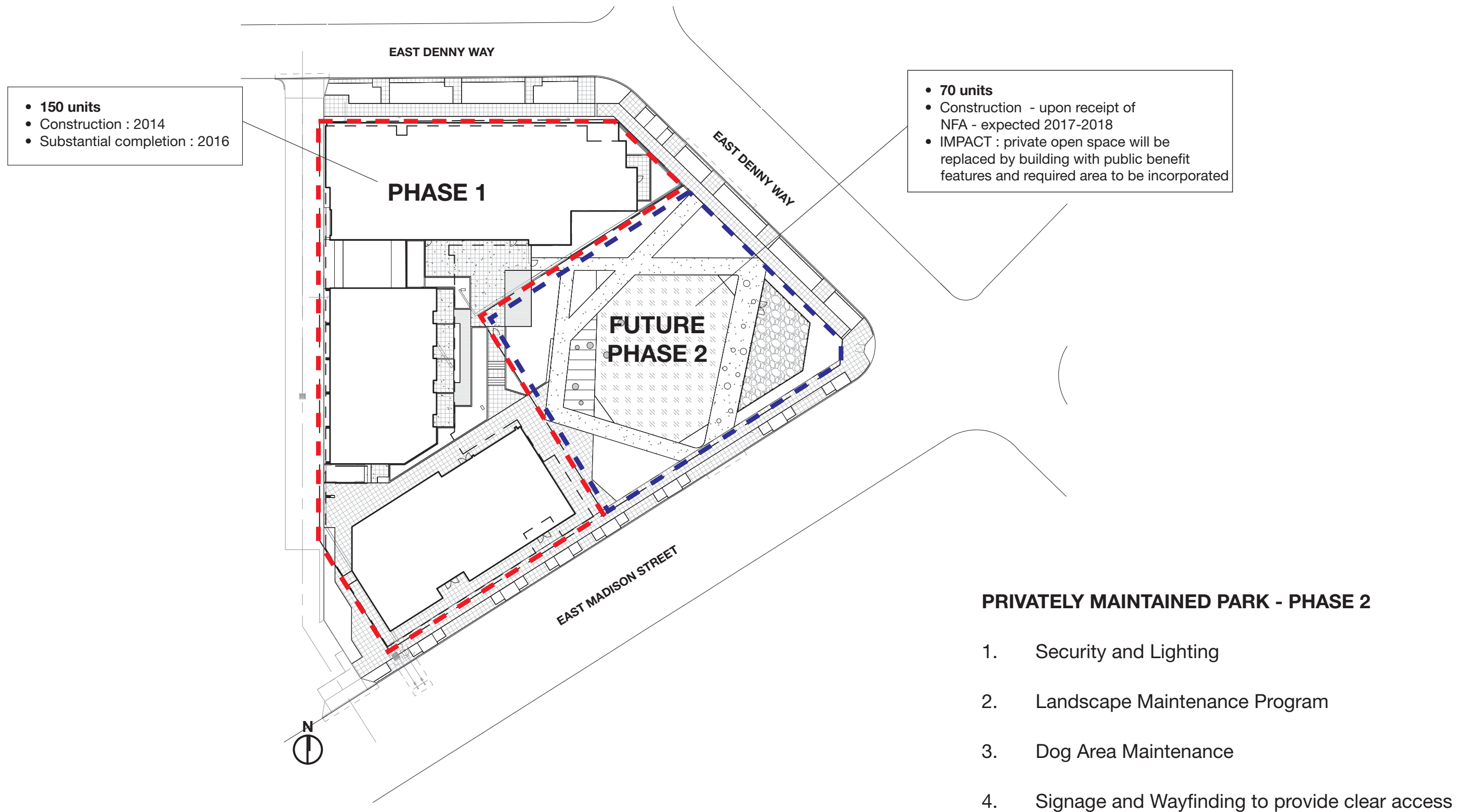
ENVIRONMENTAL IMPACTS



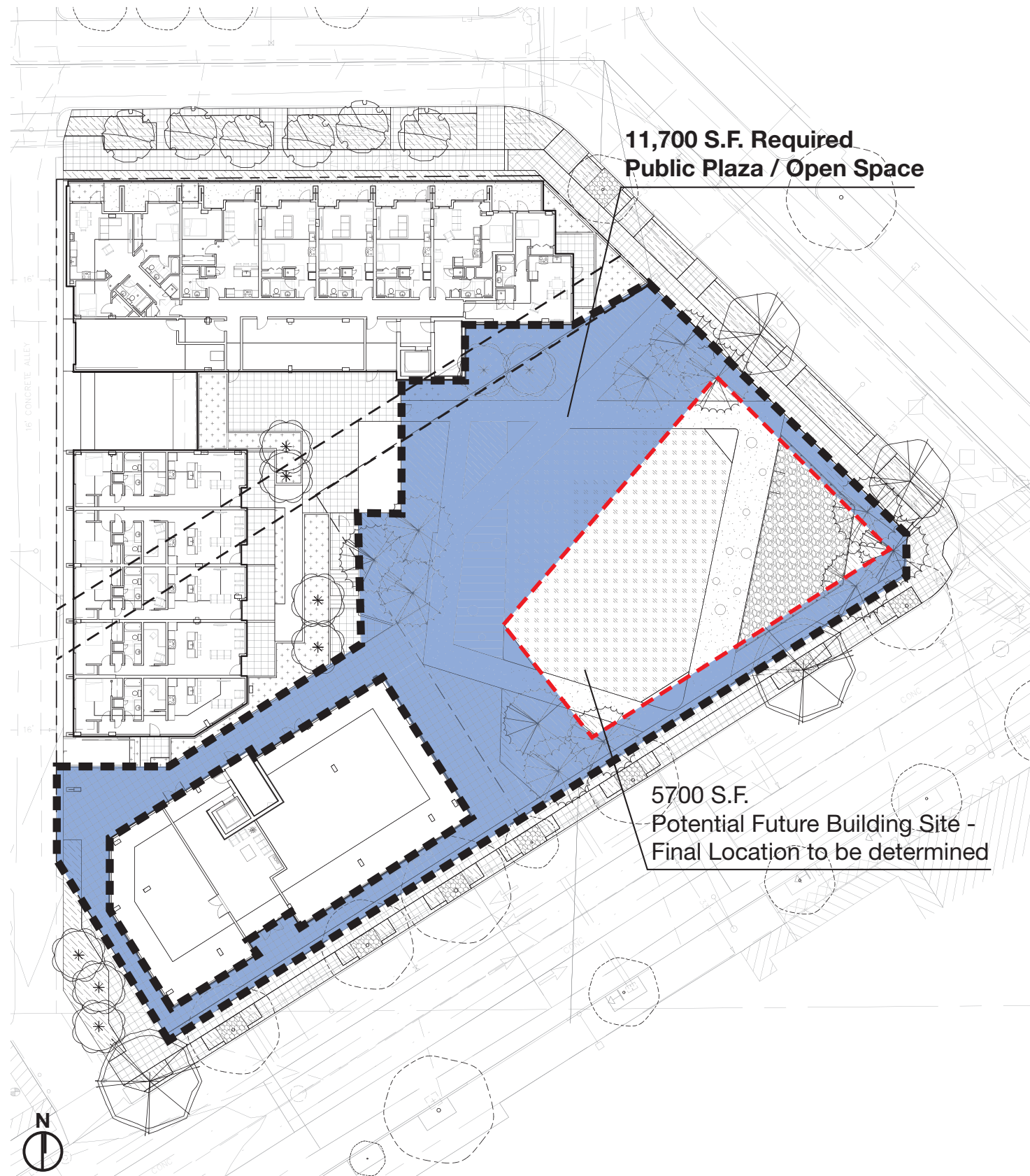
ENVIRONMENTAL IMPACTS

1. Source of Contamination - PCEs (Dry Cleaner Solvents)
2. Remedial investigation showed extent of contamination on site and into E Madison St. ROW
3. Remediation measures:
 - a. Between 2008 and 2011, most of contaminated source was eliminated
 - b. Quarterly monitoring has been ongoing
 - c. All remedial efforts are being performed per DOE's Voluntary Cleanup Program
 - b. NFA expected in 2017-2018
4. Adjacent site is clean and protected by Plume Clause

PHASING AND MAINTENANCE



2014 DESIGN ALLEY VACATION PLAN



11,700 S.F. Required
Public Plaza / Open Space

5700 S.F.
Potential Future Building Site -
Final Location to be determined

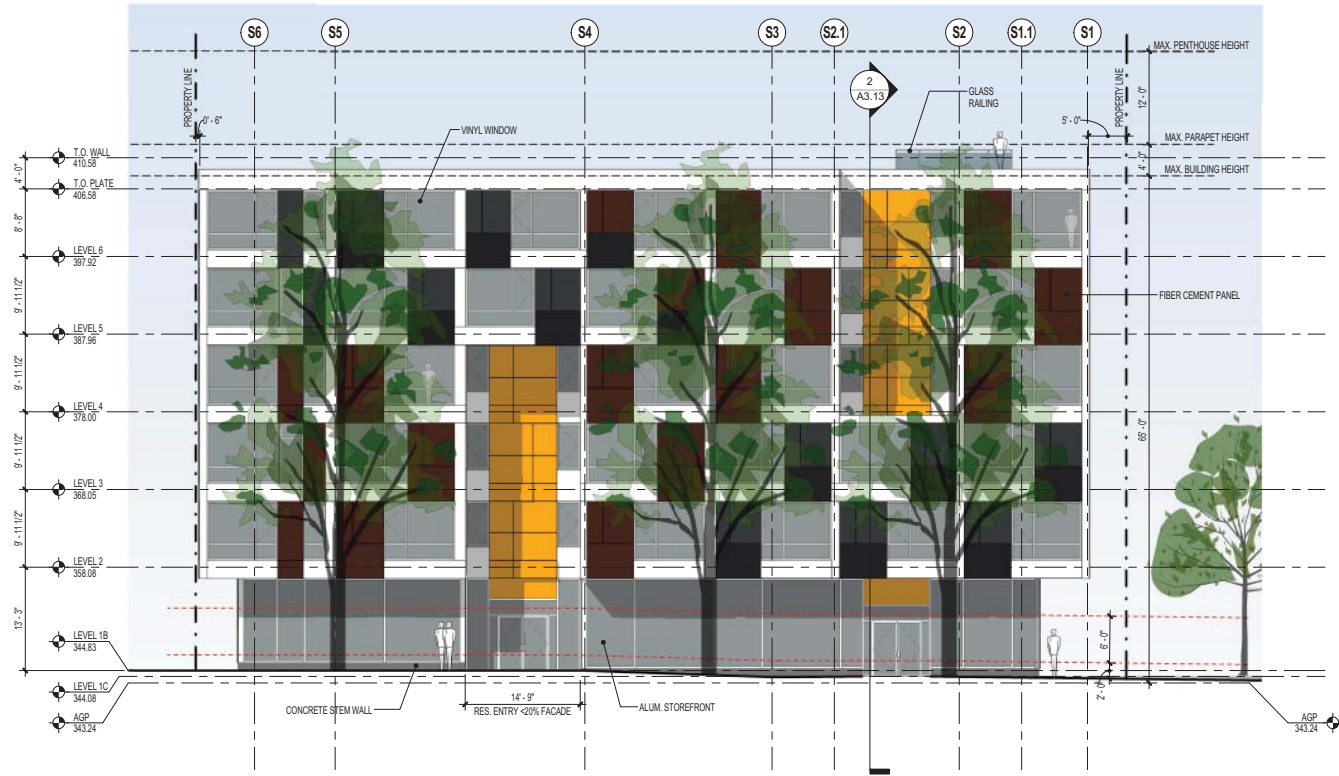
2014 DESIGN SITE PLAN



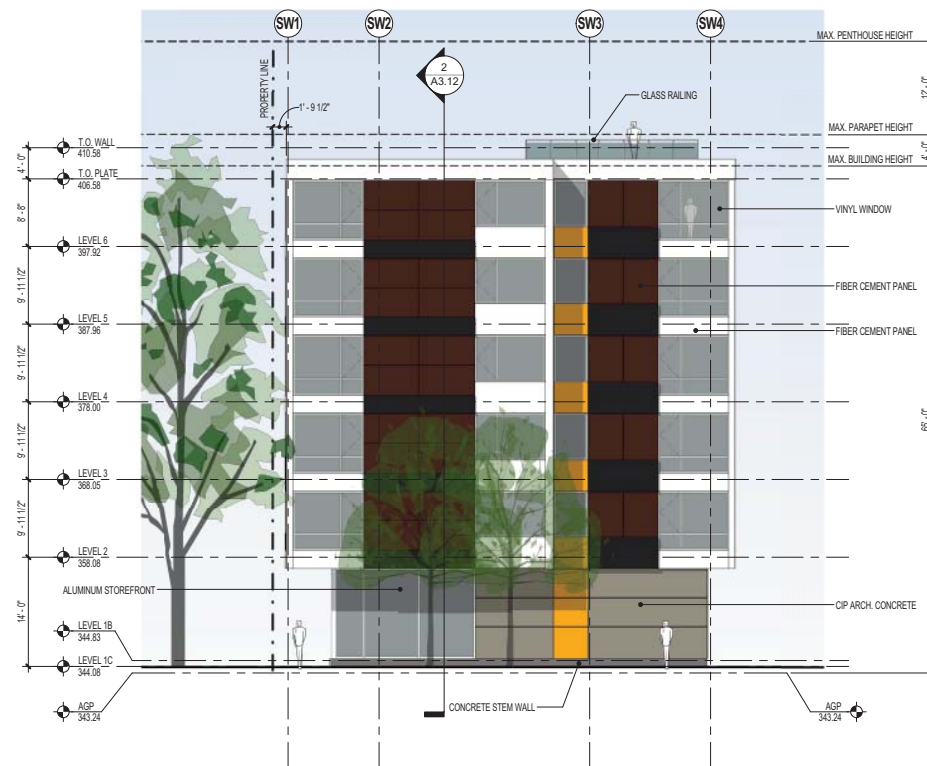
PUBLIC BENEFIT MATRIX

Public Benefit	Description	2014 Proposal
1	Public Open Space - On Site	
	Square Footage of Public Benefit Space	11,700 SF
	Trees	13
	Planting Improvements	
	Planting Area	5,710 SF
	Turf Area	4,200 SF
	Pedestrian Hardscape	7,490 SF
	Fixed Seating (Seatwalls, Stone, Conc. Perches)	260 SF
2	Pedestrian Signage	Yes
	Pedestrian Scale Lighting	Yes
	Public Art or Water Feature	
	Context Specific Art Features	Yes

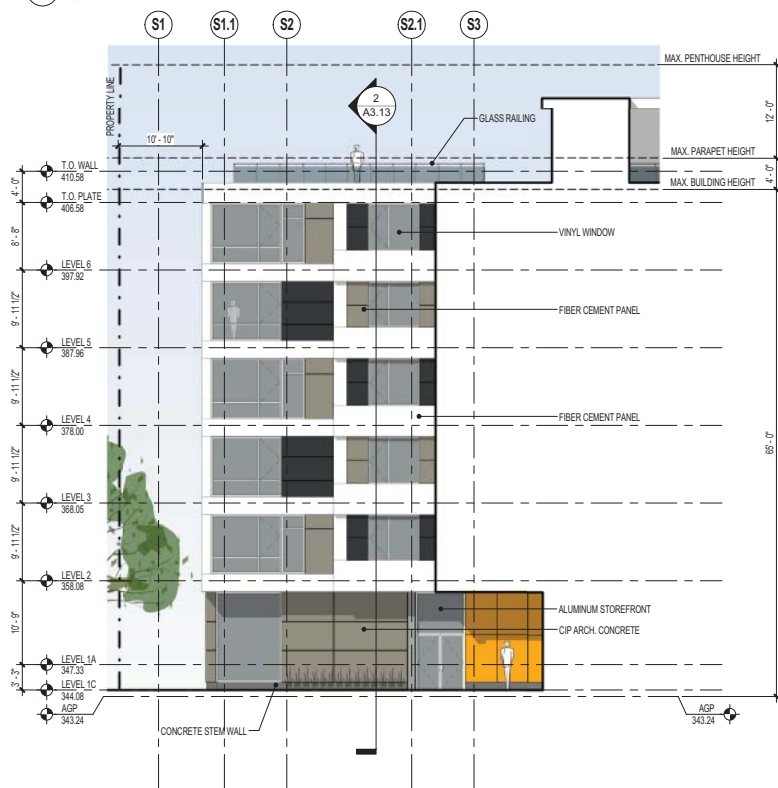
2014 DESIGN ELEVATIONS



1 ELEVATION 1 - MADISON ST
1/8" = 1'-0"



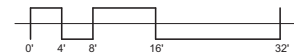
2 ELEVATION 2 - SE END ON PARK
1/8" = 1'-0"



3 ELEVATION 3 - COURTYARD SOUTH
1/8" = 1'-0"



4 ELEVATION 4 - COURTYARD WEST
1/8" = 1'-0"



2014 DESIGN ELEVATIONS



1 ELEVATION 5 - COURTYARD NORTH
1/8" = 1'-0"

2 ELEVATION 6 - NW END ON PARK
1/8" = 1'-0"

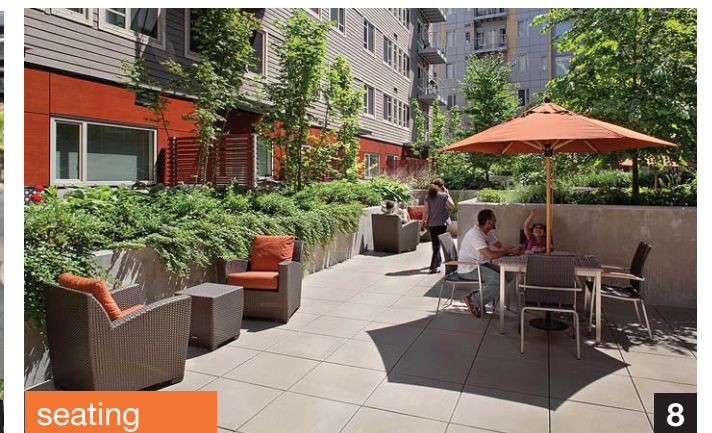
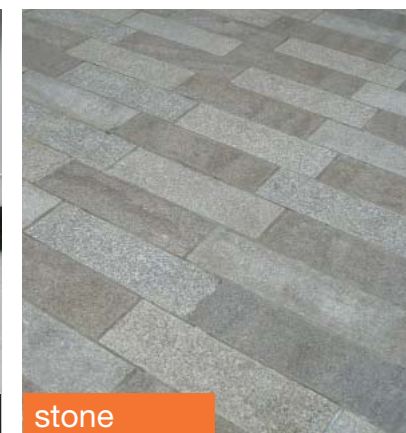
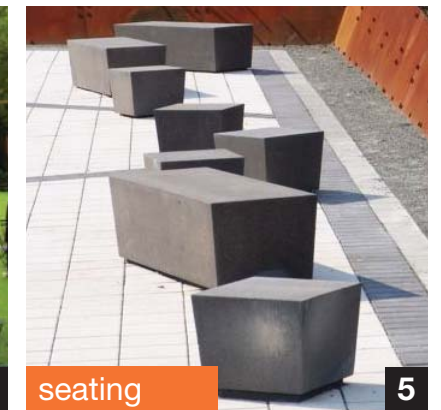
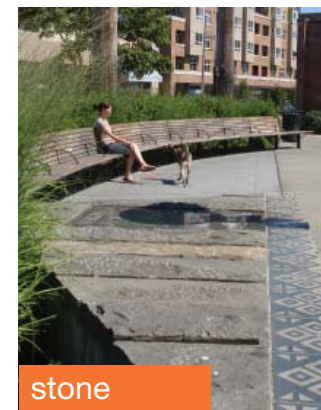
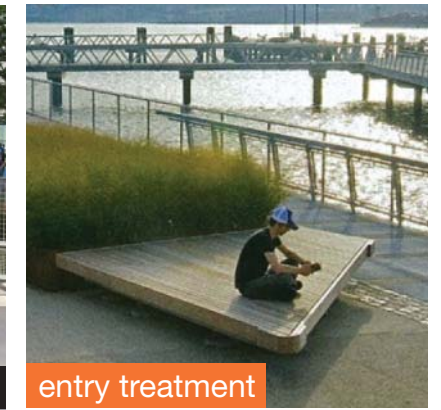
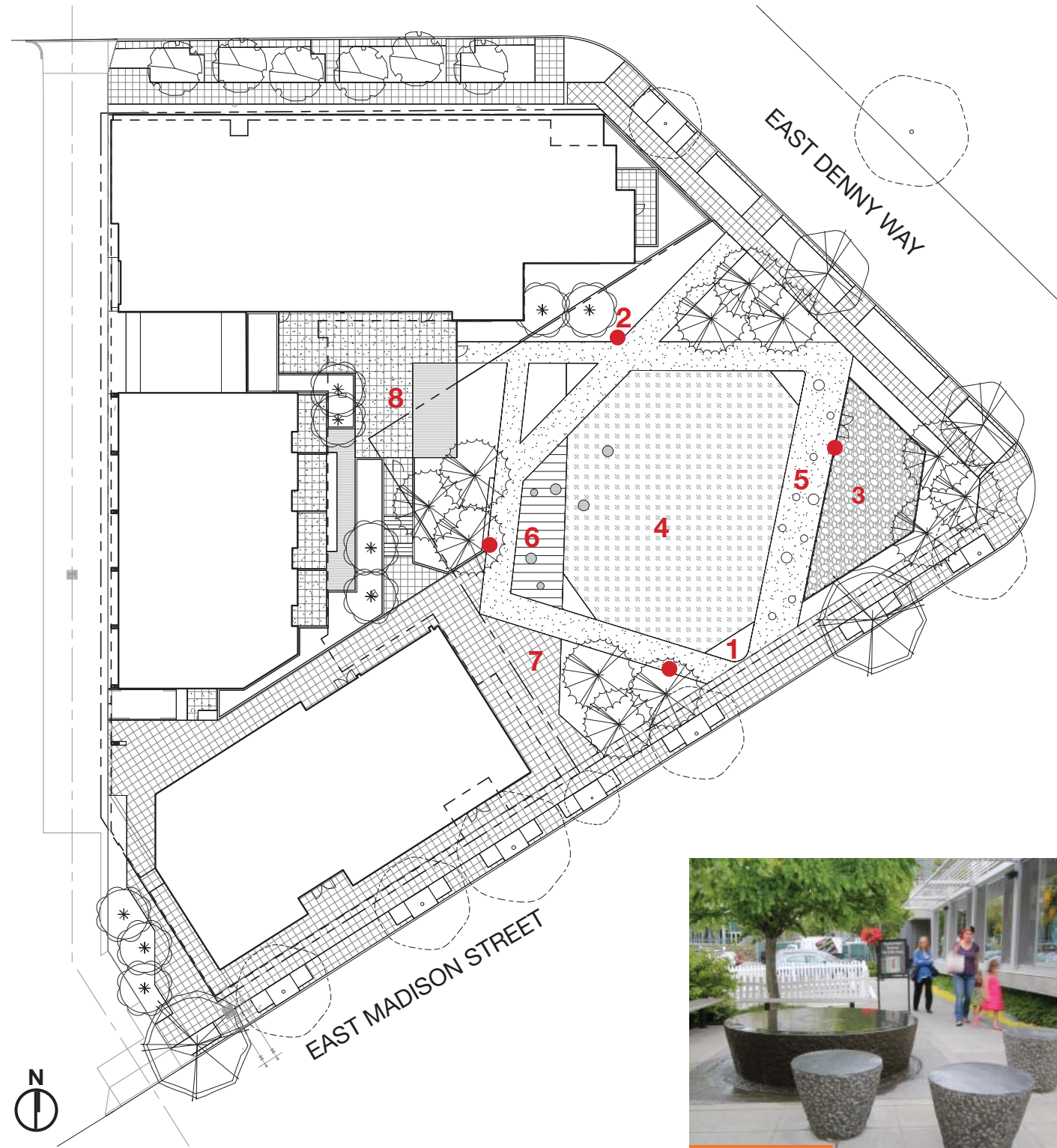


3 ELEVATION 7 - DENNY WAY
1/8" = 1'-0"

2014 DESIGN PERSPECTIVE FROM CORNER OF E. MADISON ST AND E. DENNY WAY



2014 DESIGN HARDSCAPE/ AMENITIES/ LIGHTING IMAGES



2014 DESIGN LANDSCAPE PLANT IMAGES

TREES



TREES

1. Chinese Dogwood
2. Japanese Maple
3. Japanese Snowbell
4. Katsura
5. Serviceberry
6. Stewartia
7. Vine Maple
8. Sunset Maple
9. Zelkova

SHRUBS

1. Redtwig Dogwood
2. Bonica Rose
3. Oakleaf Hydrangea
4. White Icicle Currant
5. Center Glow Ninebark
6. Goldflame Spirea
7. Doublefile Viburnum
8. Boxwood
9. Elfin Strawberry Bush
10. Drooping Leucothoe
11. Red Edge Hebe
12. Sweetbox

GRASSES + PERENNIALS

1. Orange New Zealand Sedge
2. Ice Dance Sedge
3. Tufted Hair Grass
4. Blue Oat Grass
5. Carmen Gray Rush
6. Yaku Jima Silver Grass
7. Silver Dragon Liriope
8. Kinnikinnik
9. Epimedium
10. Emerald Carpet Creeper
11. Creeping Mahonia
12. False Solomon Seal
13. Lily of the Nile
14. Wild Ginger

SHRUBS



GRASSES + PERENNIALS



2014 DESIGN ART

ARTISTIC VISION FOR 2026 EAST MADISON:

- * Honor history of vibrant, homegrown music scene, the arts and the community.
- * Cyclical rhythms: day turning to night, night turning to day, records spinning, sound loops, rippling social circles, of influence, tapestries woven into a sense of community.
- * Landscaping to incorporate forms that show patterns working together in interesting ways to create visual harmonies
- * Create a visually pleasing oasis against the vibrant streetscape of Madison
- * Incorporate lighting to aid with safety: *Eyes on the Street.*



Xenobia Bailey – African American Artist, Seattle

Bailey's radiant, crocheted mandalas are vibrant in color and texture. The installation is placed on sunny yellow walls at Northwest African American Museum in the manner of a proud homecoming parade, in a show called *Xenobia Bailey: The Aesthetics of Funk.*



PUBLIC BENEFIT SUMMARY

PUBLIC BENEFIT MATRIX

Public Benefit	Description	2009 Proposal	2014 Proposal	
1	Public Open Space - On Site			
		Square Footage of Public Benefit Space	11,700 SF	11,700 SF
		Trees	8	13
		Planting Improvements		
		Planting Area	2,060 SF	5,710 SF
		Turf Area	0	4,200 SF
		Pedestrian Hardscape	9,640 SF	7,490 SF
		Fixed Seating (Seatwalls, Stone, Conc. Perches)	30 SF	260 SF
		Pedestrian Signage	Yes	Yes
		Pedestrian Scale Lighting	Yes	Yes
2	Public Art or Water Feature			
		Context Specific Art Features	Yes	Yes