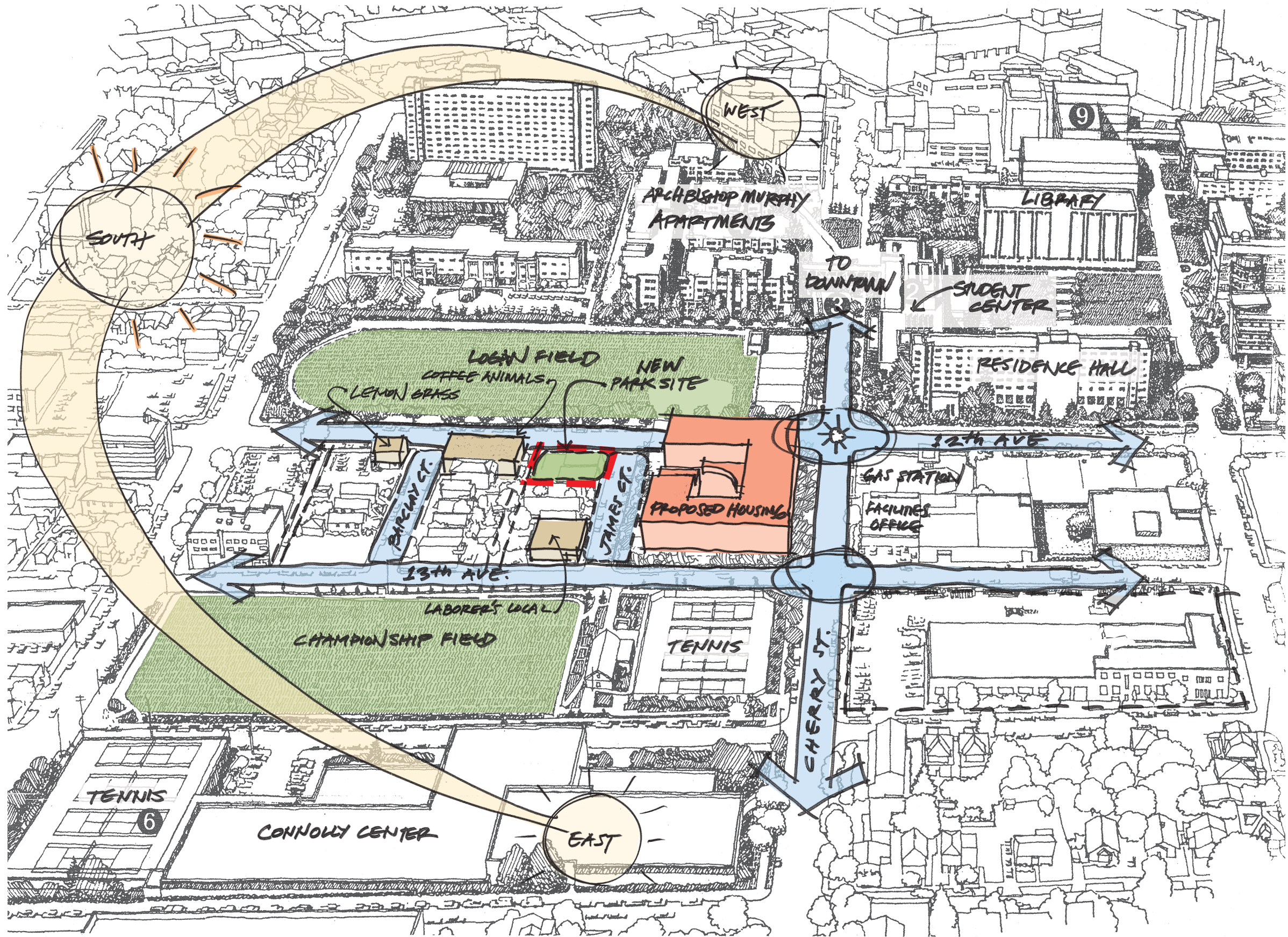


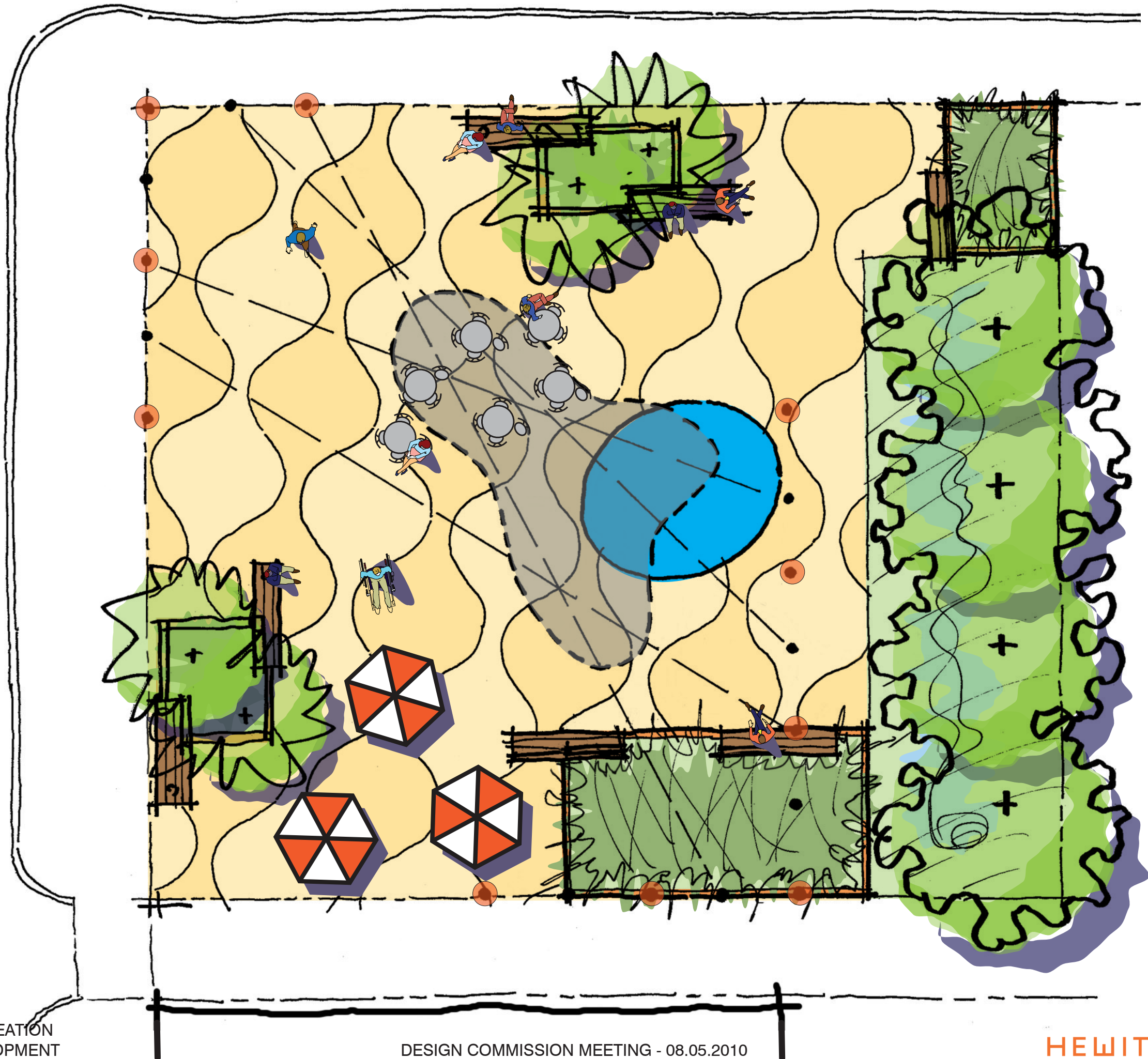
JAMES COURT WOONERF DEVELOPMENT
DESIGN COMMISSION MEETING

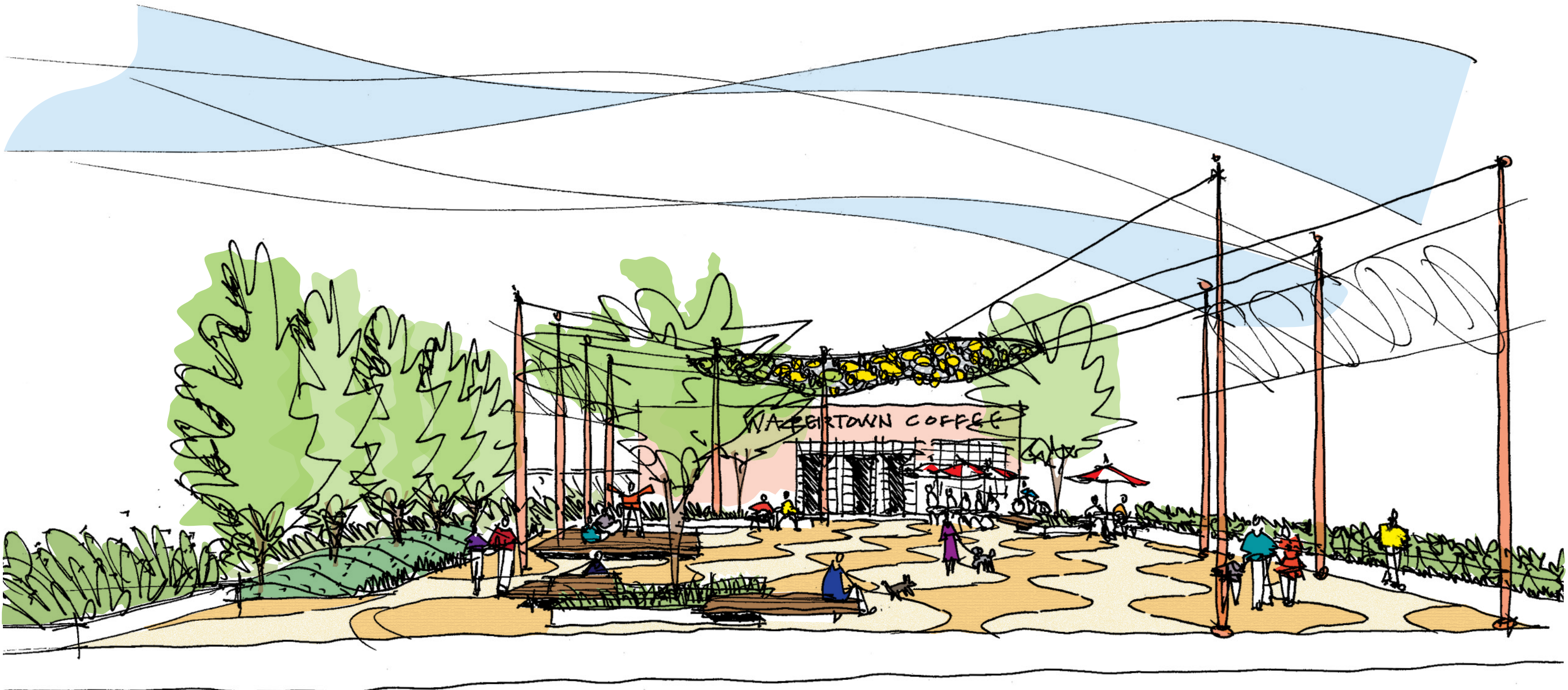


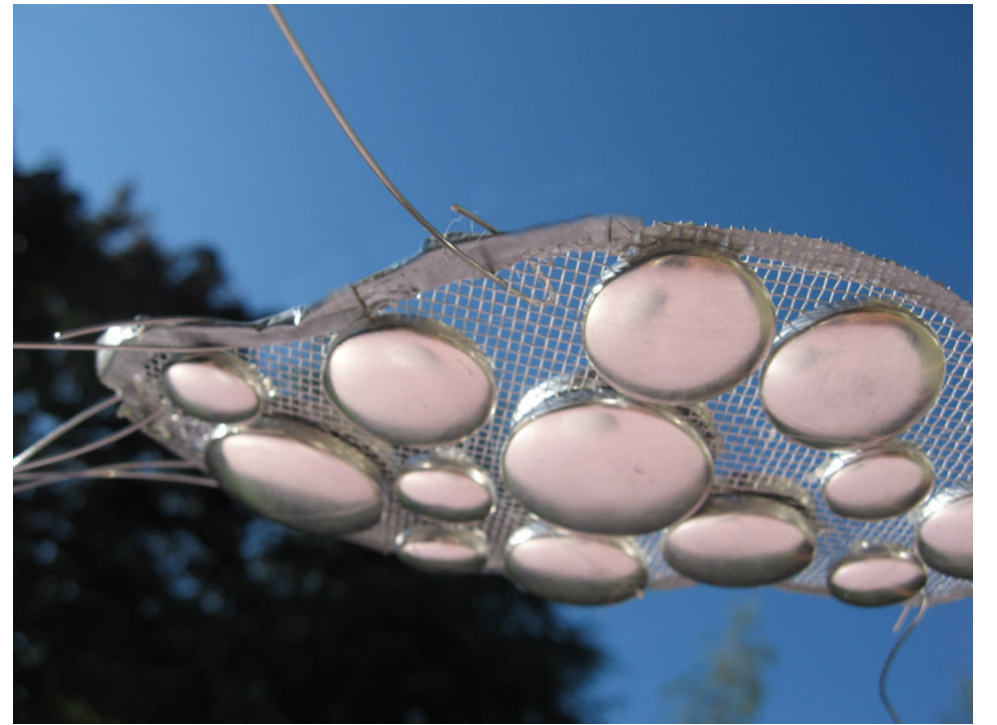
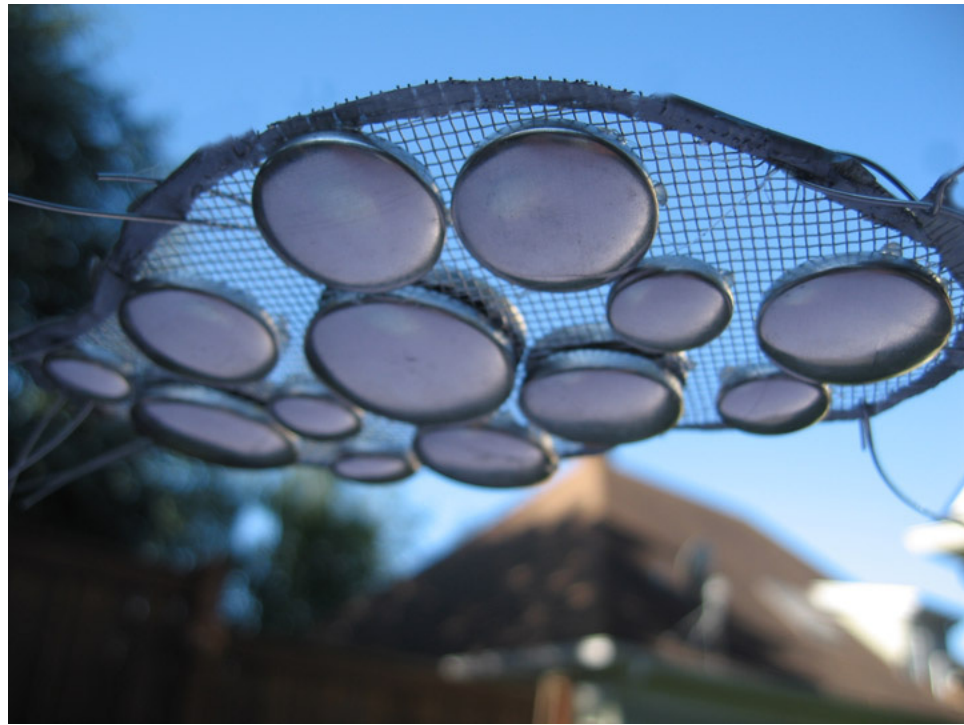
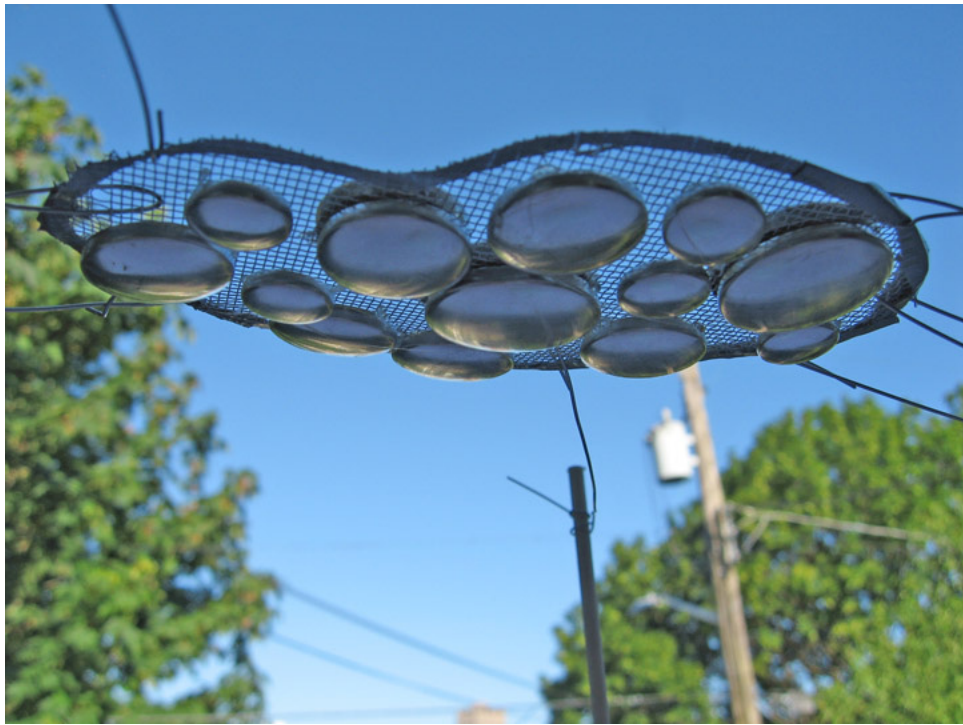


CONTEXT MAP







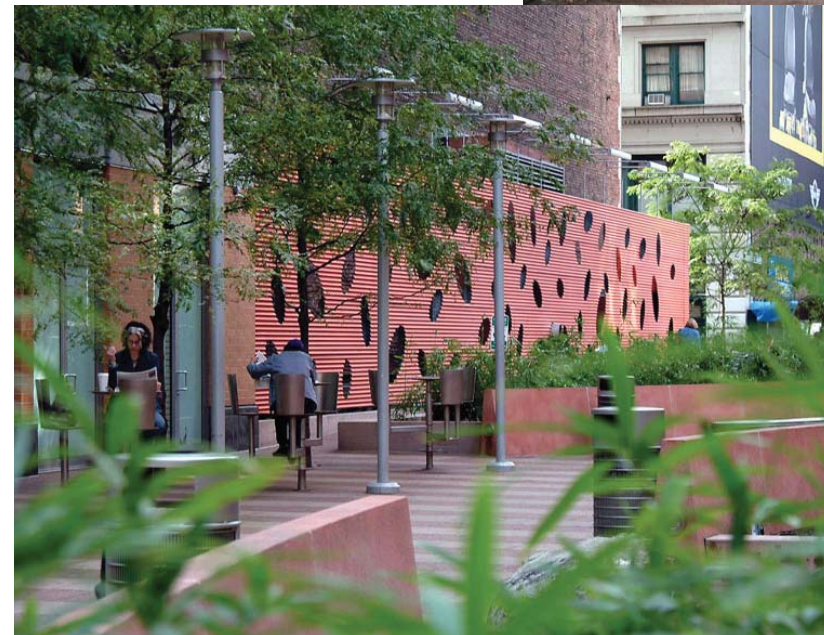




- **R.O.W. PARAMETERS**
 - * WIDTH
 - * GRADING
 - * FIRE ACCESS
 - * ONE WAY
 - * PARKING

- **ADJACENT USES**
 - * PARK
 - * STUDENT HOUSING
 - * SINGLE FAMILY HOMES
 - * UNION BUILDING

- **CONSTRUCTION BUDGET**



COMMUNITY DESIGN INPUT

WOONERF ACTIVATION

1. **Sculptural Seating**
2. **Lighting as an Opportunity for Activation**
3. **Integrated Play Elements / Surfaces**
4. **Food Truck Accommodations**
5. **Bike Access / Parking**
6. **Outdoor Dining / Community Table**

CELEBRATING COMMUNITY VISION

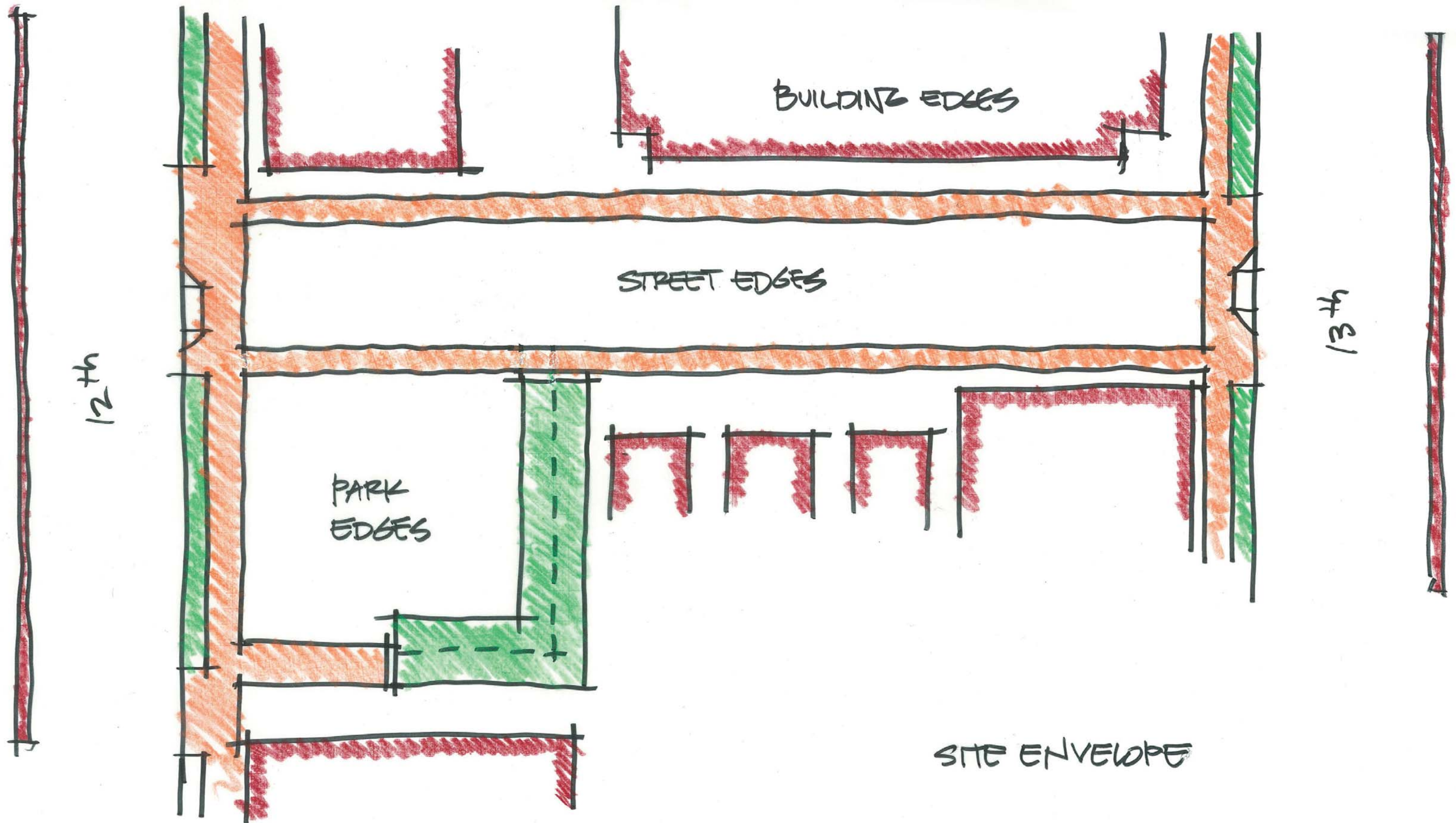
1. **Continue paving and planting from 12th Avenue Park into the woonerf.**
2. **Unique design for space – visual amenities to draw people into the space.**
3. **Utilize non-standard and high quality paving materials.**

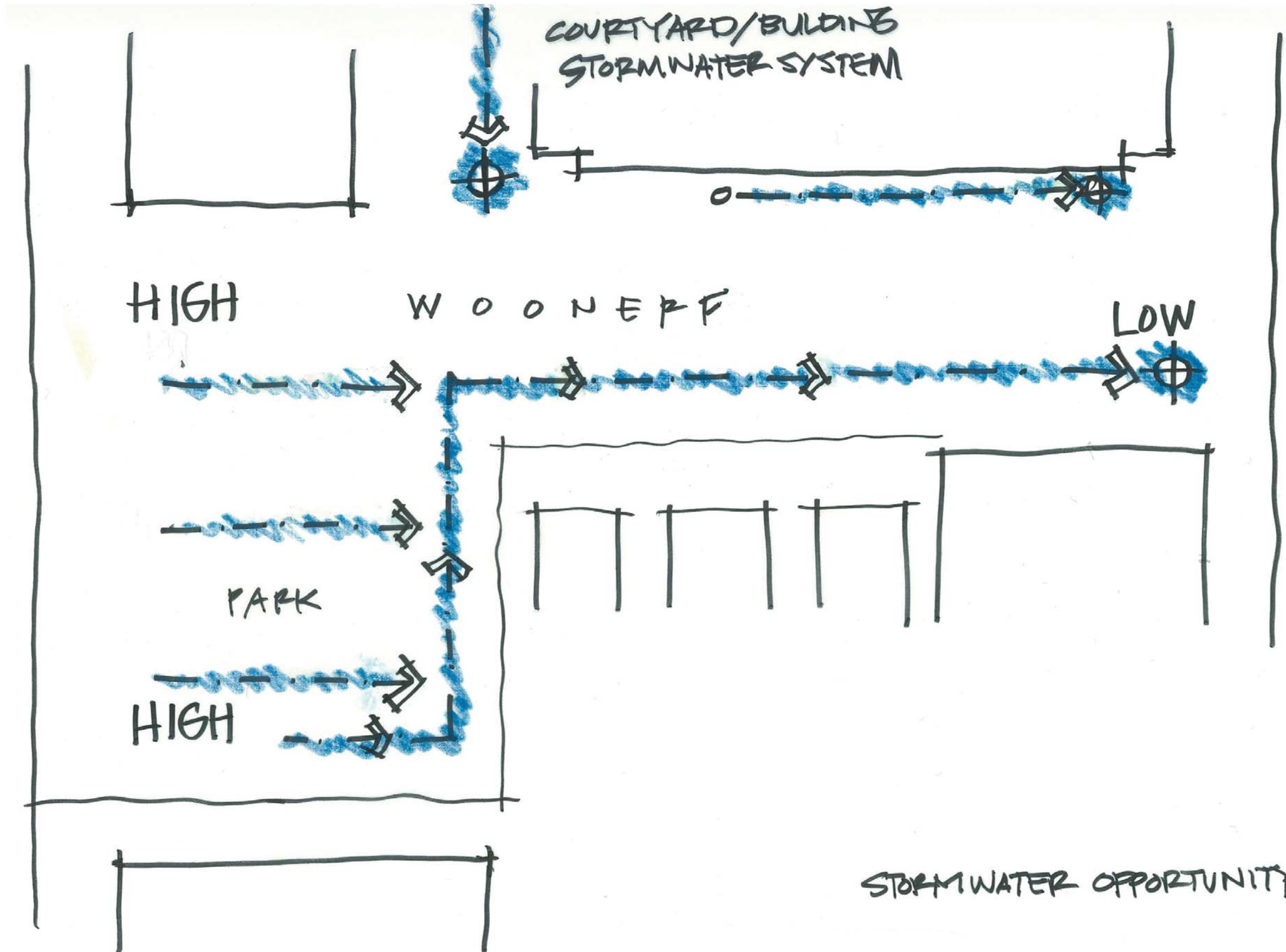
SAFETY

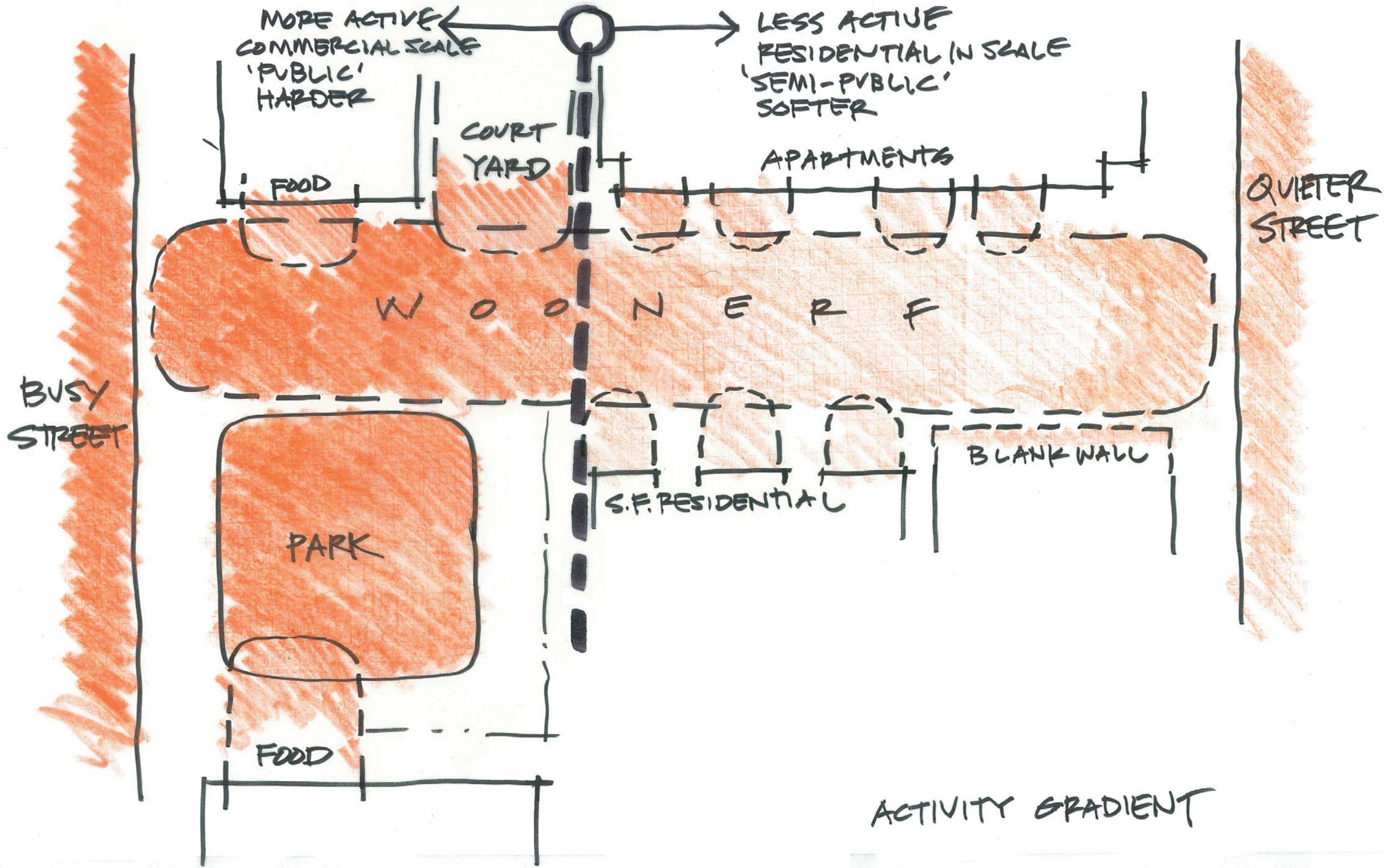
1. **Create open and inviting space with no hidden dark areas for people to linger.**
2. **Add pedestrian scale light fixtures to improve light quality.**

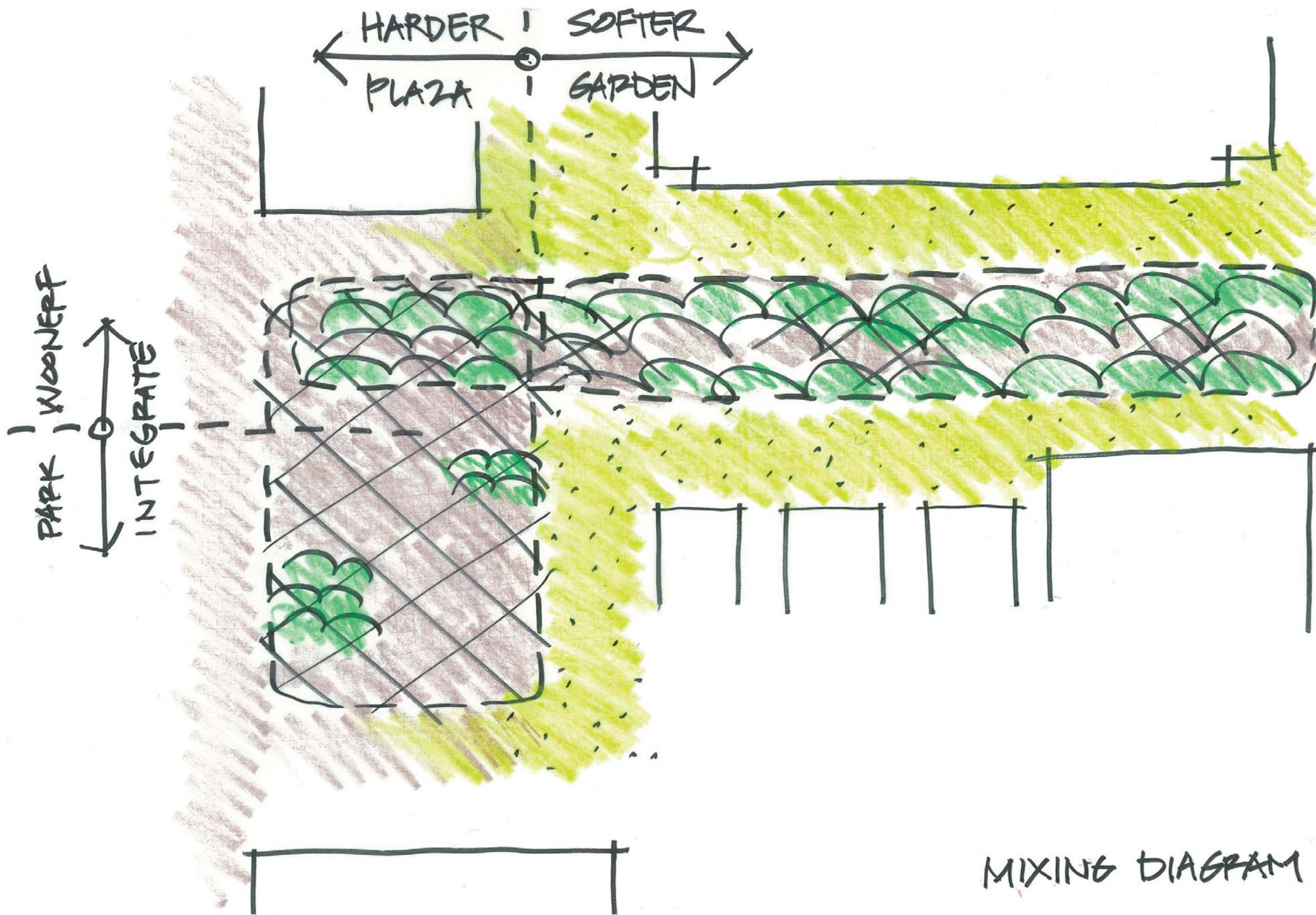
LANDSCAPE

1. **Space should be inviting while respecting privacy of adjacent residences.**
2. **Incorporate ‘Pollinator Pathway’ Plantings.**
3. **Use natural drainage/stormwater planters as ephemeral water feature.**
4. **Native Landscaping**
5. **Balance sun and shade**

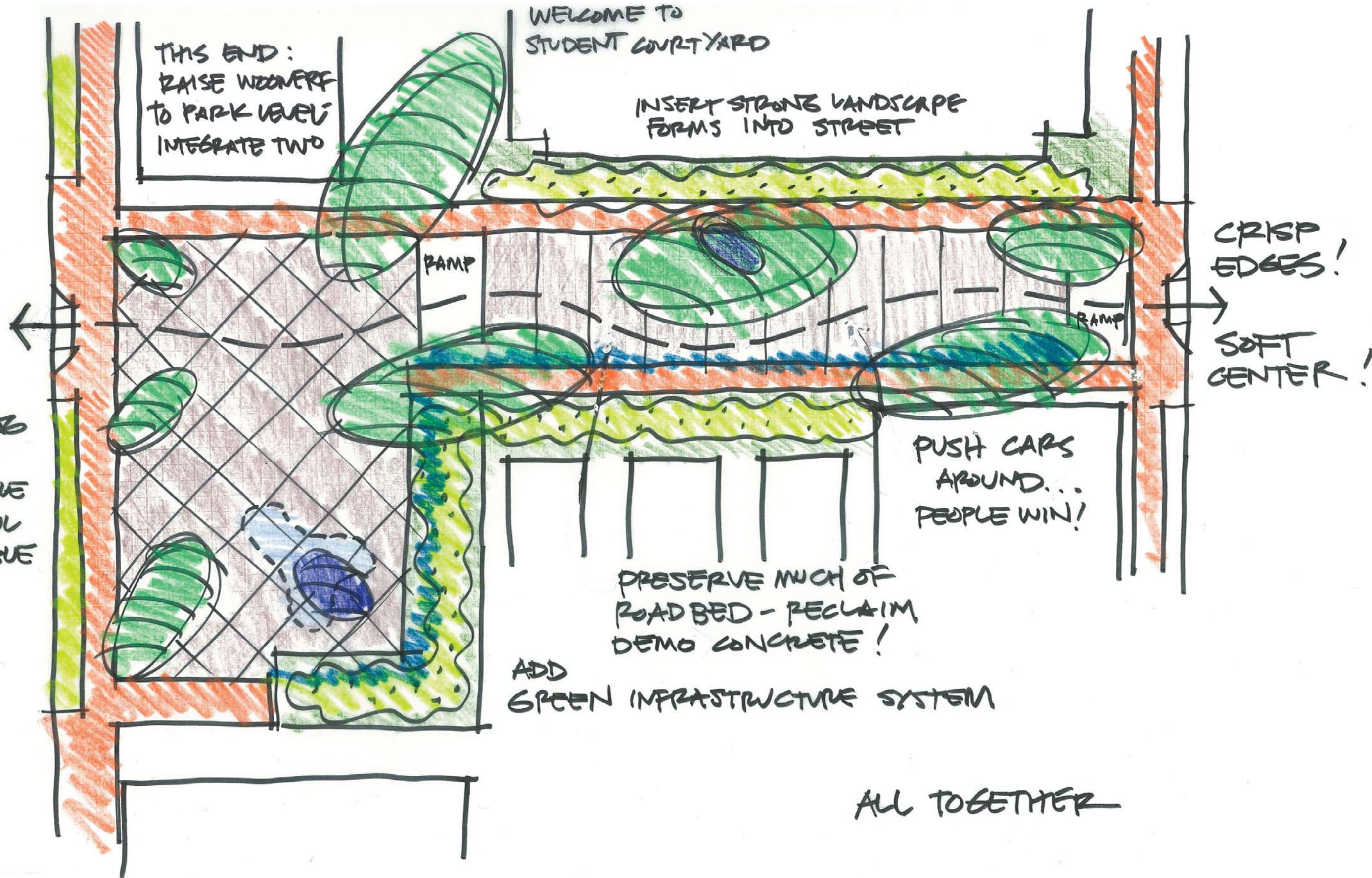








MIXING DIAGRAM



THIS END:
RAISE WOONERF
TO PARK LEVEL
INTEGRATE TWO

WELCOME TO
STUDENT COURTYARD

INSERT STRONG LANDSCAPE
FORMS INTO STREET

RAMP

RAMP

CRISP
EDGES!

SOFT
CENTER!

- WE WANT:
- SAFE
 - WELCOMING
 - FLEXIBLE
 - RESPONSIBLE
 - DELIGHTFUL
 - MEMORABLE

PUSH CARS
AROUND...
PEOPLE WIN!

PRESERVE MUCH OF
ROAD BED - RECLAIM,
DEMO CONCRETE!

ADD
GREEN INFRASTRUCTURE SYSTEM

ALL TOGETHER

