

SEATTLE URBAN FORESTRY COMMISSION

Tom Early, Chair • Steve Zemke, Vice-Chair
Weston Brinkley • Leif Fixen • Reid Haefer • Craig Johnson • Donna Kostka
Joanna Nelson de Flores • Sarah Rehder • Andrew Zellers

The Urban Forestry Commission was established to advise the Mayor and City Council concerning the establishment of policy and regulations governing the protection, management, and conservation of trees and vegetation in the City of Seattle

June 7, 2017

Meeting Notes

Seattle Municipal Tower, Room 2750 (27th floor)
700 5th Avenue, Seattle

Attending

Commissioners

Tom Early – chair
Steve Zemke – vice-chair
Weston Brinkley
Craig Johnson
Joanna Nelson de Flores
Sarah Rehder

Staff

Maggie Glowacki - SDCI
Sandra Pinto de Bader - OSE

Absent- Excused

Leif Fixen
Reid Haefer
Donna Kostka
Andrew Zellers

Public

Seth Shteir – Seattle Audubon
Michael Oxman

NOTE: Meeting notes are not exhaustive. For more details, listen to the digital recording of the meeting at: <http://www.seattle.gov/urbanforestrycommission/meetingdocs.htm>

Call to order

Tom called the meeting to order

Public comment

None

Adoption of May 3 and May 10 meeting notes

ACTION: A motion to approve the May 3 meeting notes as amended was made, seconded, and approved.

ACTION: A motion to approve the May 10 meeting notes as amended was made, seconded, and approved.

Environmental Critical Areas update

Maggie Glowacki presented the ECA update. She is the SDCI staff focusing on trees.

What are the environmentally critical areas in Seattle?

- Aquifers
- Landslide-prone and steep slope areas
- Peat bogs

- Streams/riparian corridors
- Small lakes (large lakes are regulated by the Shoreline Master Plan)
- Wetlands

The requirements of the ECA update are:

- Review regulations for compliance with Growth Management Act
- Best available science
- Public participation plan
- Develop policies and regulations

SDCI has maps that provide guidance subject to ground-truthing.

Priority species protection:

- Priority species
 - o Bald eagle
 - o Heron – species of local importance
- Options for compliance
 - o Director’s Rule/Standard Management plan
 - o WA Department of Fish and Wildlife site-specific plan

Changes made to the ECA regulations:

- Correction/clarification/organizational – clearer language and organizational changes increase understanding and increase consistency
- Substantive changes and based on best available science- increase buffer for Category III wetlands with high, and moderate level habitat function; modification of how heron habitat is protected within a specified distance from heron colonies, and the addition of mitigation standards
- Typographical errors
- Replace State Environmental Policy Act review – clear and predictable ECA regulations for certain projects that are exempt from SEPA under Section 25.09.800
- Amend the ECA/SEPA Director’s Rule – allow vegetation management as a SEPA exempt activity if it meets the SEPA exemption thresholds and ECA regulations.
- 25.09.045 Exemptions – clarify the requirements for maintenance and repair, and renovation and structural alterations, of existing development. (Rebuilding or replacement of structures to be addressed in a new Section 25-09-052.
- 25.09.052 rebuilding or replacing structures.

Exemption 25.09.045.H.3

- A.3.b City agencies do not need to make an application to the Director, provided they shall comply with all provisions of this Section 25.09.045, make all determinations and maintain records documenting compliance with all provisions.
- H. utilities, rights-of-way, public and private enhancement projects, and public trails.
- Changes:
 - o 25.09.065 – new section that establishes the steps in mitigation sequencing. Same as Shoreline Master Plan – used to address adverse impacts to critical areas and buffers in addition to other development standards.

Mitigation Requirements

- Avoid the impact
- Minimize impacts by limiting impact
- Mitigate by repairing, rehabilitating or restoring the affected environment

- Compensate for the environmental impacts
- Changes:
 - o 25.09.070 tree, vegetation, and impervious surface management section
 - o 25.09.075 pesticide and herbicide section moved from general development standards

Changes to Vegetation Management

- Include management of impervious surface
- Provide additional guidance and clarity regarding vegetation management and how an increase in impervious surface must be mitigated
- Clarify management and mitigation requirements and implement best available science regarding adding impervious surface in an area that was undeveloped and is located within an ECA such that run-off and other consequences would impact a critical area.
- Additionally, specific standards to protect these areas as a replacement for the current use of SEPA to add consistency and predictability.
- Changes:
 - o 25.09.090 development standards for steep slope erosion hazard areas
 - o 25.090.160 increase buffer for Category III wetlands with high, and moderate level habitat function
 - o 25.09.200 development standards for fish and wildlife habitat conservation areas
 - Clarify great blue heron designated species of local importance and the process to list an additional species
 - Include greater protection for great blue heron based on WDFW's 2012 Priority Habitat and Species guidance for great blue heron.

Great Blue Heron

- Updated Director's Rule
 - o Proposed updated DR 8-2017
 - o Director's Rule 5-2007 Great Blue Heron Management Plan
 - o Comment period through 6/9/17
 - o Land use information bulletin
- UFC and Heron Habitat Helpers recommendations (2010)
 - o Retain trees: 6" DBH or larger screening trees year-round (decrease from 22" DBH during nesting season)
 - o 15-ft building setback: require a landscape planting plan approved by SDCI.

Washington Department of Fish and Wildlife priority species guidance

- Include year-round buffer: 197-ft if vegetation is removed; mitigation to replace habitat loss is required using mitigation sequencing
- Great Blue Heron Nesting Colony:
 - o Clarify no development is allowed within the GBH nesting colony and
 - o Protect a nesting colony for 10 years after last know nesting season.
- Definitions: update and add terms
- UFC and HHH recommendations 2016/2017
 - o Protect pre-nesting areas: specific areas observed being used by heron
 - o Include guidance on conditions for projects within the year-round buffer: include review of light, noise, and pollution from outside activities.
- Changes: Definitions - added many definitions from "Aquatic environment" to "wetland rehabilitation."

The Commission asked questions about species protection, including bald eagles and marine mammals.

UFC question/comment: Do you know if the reasonable use section of the regulations will change?

Answer: reasonable use is highly legal. There was the opportunity to change it this time around and it didn't change much.

Seattle Audubon draft letter of support for Bird Treaty

The Commission discussed the letter and adopted it as amended.

ACTION: A motion to approve the Urban Bird Treaty letter as amended was made, seconded, and approved.

Work Plan items discussion

Tom would like to revisit the 2017 work plan to look at assignments and action items. Move the pieces below to next week:

- Policy principles of a tree code update
- 2016 canopy cover assessment review. How should our current data inform future urban forest policy decisions?

They would like to get an update on:

- Supplemental use guidelines for natural areas/greenbelts
- Cheasty
- Mount Baker contract
- GSP plan update
- GSP update
- Yesler Terrace – follow up
- Invite Linden from DNR to talk
- Invite new City Fruit Executive Director to introduce herself to the UFC
- Parks risk assessments and tree removals – lawsuit

Public comment

Michael Oxman – He wants to talk to the Commission about Lincoln Park. 91 trees are proposed to be removed at the park. There were questions about the risk assessment and the impact these removals will have. Parks Department is being sued by the family of the man who was struck by a tree in Seward Park. Parks documents were subpoenaed and there is now a stop-gag on documents related to the lawsuit. A tree service was hired to assess risk in Seattle Parks. Would like to see the City shift to an aggressive tree maintenance program instead of waiting to award damages due to hazardous trees.

This week Adiel Kaplan is finishing a canopy cover article.

New Business

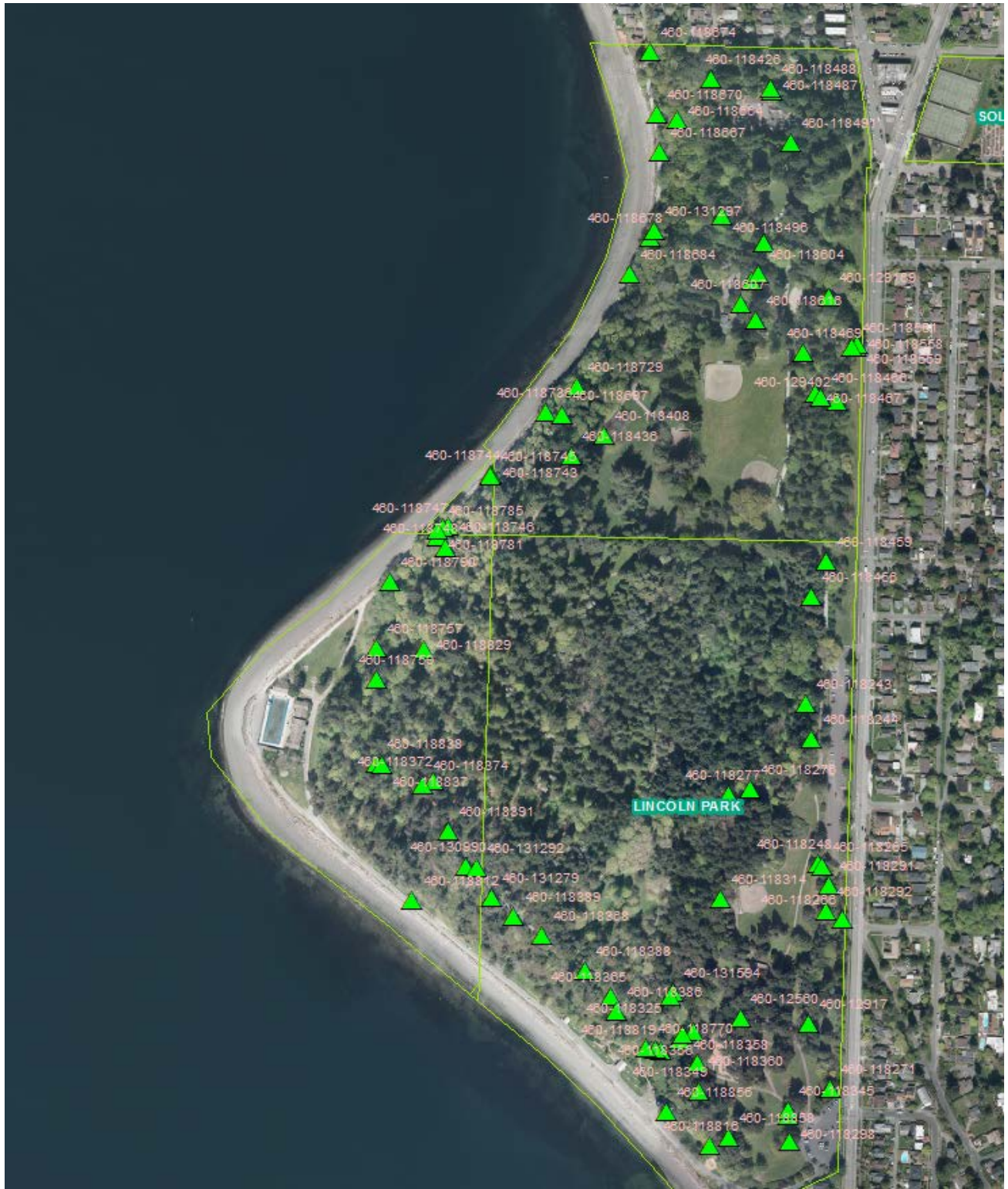
None

Adjourn

Tom adjourned the meeting.

Public input:

Michael Oxman shared the following information on the trees that are being cut by Parks Department in Lincoln Park:



TREEID	Park	Species	Common	DBH	Condition	Risk	DMaintena	RESERVEDTEX	LATITUDE	LONGITUDE
460-11860	Lincoln	Par Pseudotsu	Douglas Fir	22	Poor	Moderate	REMOVE		548 47.53513	-122.394
460-11860	Lincoln	Par Pseudotsu	Douglas Fir	27	Poor	Moderate	REMOVE		549 47.53512	-122.394
460-11860	Lincoln	Par Tsuga hete	Western H	43	Poor	Moderate	REMOVE		552 47.53476	-122.394
460-11866	Lincoln	Par Alnus rubr.	Red alder	40	Poor	Moderate	REMOVE		614 47.53598	-122.396
460-11873	Lincoln	Par Acer macr	Bigleaf Ma	64	Poor	Moderate	REMOVE		683 47.53346	-122.397
460-11874	Lincoln	Par Acer macr	Bigleaf Ma	11	Dead	Moderate	REMOVE		690 47.53284	-122.398
460-11875	Lincoln	Par Pseudotsu	Douglas Fir	38	Poor	Moderate	REMOVE		706 47.53086	-122.4
460-11878	Lincoln	Par Alnus rubr.	Red alder	11	Poor	Moderate	REMOVE		759 47.53223	-122.399
460-11881	Lincoln	Par Acer macr	Bigleaf Ma	15	Dead	Moderate	REMOVE		795 47.52644	-122.395
460-11882	Lincoln	Par Prunus sp	Cherry Tre	13	Poor	Moderate	REMOVE		799 47.52735	-122.395
460-11882	Lincoln	Par Acer macr	Bigleaf Ma	15	Poor	Moderate	REMOVE		809 47.53115	-122.399
460-11855	Lincoln	Par Abies gran	Grand Fir	20	Dead	Moderate	REMOVE		506 47.53414	-122.393
460-11872	Lincoln	Par Acer macr	Bigleaf Ma	43	Poor	Moderate	REMOVE		676 47.53371	-122.397
460-11874	Lincoln	Par Acer macr	Bigleaf Ma	20	Dead	Moderate	REMOVE		691 47.53285	-122.398
460-11855	Lincoln	Par Abies gran	Grand Fir	19	Dead	Moderate	REMOVE		505 47.53416	-122.393
460-11869	Lincoln	Par Alnus rubr.	Red alder	31	Poor	Moderate	REMOVE		644 47.53342	-122.397
460-11824	Lincoln	Par Acer macr	Bigleaf Ma	40	Poor	Moderate	REMOVE		205 47.53071	-122.394
460-12916	Lincoln	Par Tsuga hete	Western H	30	Poor	Moderate	REMOVE	<Null>	<Null>	<Null>
460-13099	Lincoln	Par Arbutus m	Pacific Mai	17	Dead	Moderate	REMOVE	<Null>	<Null>	<Null>
460-13159	Lincoln	Par Arbutus m	Pacific Mai	22	Poor	Moderate	REMOVE	<Null>	<Null>	<Null>
460-11874	Lincoln	Par Acer macr	Bigleaf Ma	14	Dead	Moderate	REMOVE		692 47.53283	-122.398
460-11874	Lincoln	Par Alnus rubr.	Red alder	33	Poor	Moderate	REMOVE		695 47.53214	-122.399
460-11827	Lincoln	Par Arbutus m	Pacific Mai	20	Poor	Moderate	REMOVE		223 47.52981	-122.395
460-11834	Lincoln	Par Chamaecy	Sawara Cy	30	Poor	Moderate	REMOVE		292 47.52674	-122.394
460-11834	Lincoln	Par Arbutus m	Pacific Mai	22	Poor	Moderate	REMOVE		295 47.52696	-122.395
460-11836	Lincoln	Par Arbutus m	Pacific Mai	26	Dead	Moderate	REMOVE		311 47.52786	-122.396
460-11838	Lincoln	Par Arbutus m	Pacific Mai	26	Dead	Moderate	REMOVE		335 47.5281	-122.397
460-11838	Lincoln	Par Arbutus m	Pacific Mai	27	Dead	Moderate	REMOVE		336 47.5286	-122.398
460-11824	Lincoln	Par Chamaecy	Lawson's C	16	Poor	Moderate	REMOVE		210 47.52918	-122.393
460-11843	Lincoln	Par Pseudotsu	Douglas Fir	22	Poor	Moderate	REMOVE		383 47.53304	-122.397
460-11846	Lincoln	Par Abies gran	Grand Fir	31	Dead	Moderate	REMOVE		414 47.53369	-122.393
460-11846	Lincoln	Par Acer macr	Bigleaf Ma	17	Poor	Moderate	REMOVE		416 47.53408	-122.394
460-11832	Lincoln	Par Arbutus m	Pacific Mai	21	Poor	Moderate	REMOVE		271 47.52787	-122.395
460-13129	Lincoln	Par Alnus rubr.	Red alder	16	Fair	Moderate	REMOVE	<Null>	<Null>	<Null>
460-11877	Lincoln	Par Prunus sp	Cherry Tre	26	Poor	Moderate	REMOVE		717 47.52737	-122.396
460-11885	Lincoln	Par Arbutus m	Pacific Mai	22	Poor	Moderate	REMOVE		838 47.52652	-122.394
460-11826	Lincoln	Par Chamaecy	Lawson's C	17	Poor	Moderate	REMOVE		211 47.52914	-122.393
460-11836	Lincoln	Par Arbutus m	Pacific Mai	23	Poor	Moderate	REMOVE		306 47.52724	-122.395
460-11860	Lincoln	Par Pseudotsu	Douglas Fir	18	Poor	Moderate	REMOVE		551 47.53482	-122.394
460-11829	Lincoln	Par Chamaecy	Lawson's C	17	Poor	Moderate	REMOVE		244 47.5265	-122.394
460-11835	Lincoln	Par Arbutus m	Pacific Mai	17	Poor	Moderate	REMOVE		302 47.52753	-122.395
460-11835	Lincoln	Par Arbutus m	Pacific Mai	21	Poor	Moderate	REMOVE		304 47.5275	-122.395
460-11836	Lincoln	Par Arbutus m	Pacific Mai	22	Dead	Moderate	REMOVE		314 47.52843	-122.397
460-11837	Lincoln	Par Pseudotsu	Douglas Fir	36	Poor	Moderate	REMOVE		318 47.5299	-122.399
460-11837	Lincoln	Par Arbutus m	Pacific Mai	25	Poor	Moderate	REMOVE		320 47.52984	-122.399
460-11838	Lincoln	Par Arbutus m	Pacific Mai	36	Dead	Moderate	REMOVE		333 47.52771	-122.396
460-11846	Lincoln	Par Abies gran	Grand Fir	27	Dead	Moderate	REMOVE		413 47.53365	-122.393
460-11827	Lincoln	Par Arbutus m	Pacific Mai	22	Poor	Moderate	REMOVE		222 47.52988	-122.394
460-11829	Lincoln	Par Chamaecy	Lawson's C	33	Dead	Moderate	REMOVE		238 47.52872	-122.393
460-12917	Lincoln	Par Arbutus m	Pacific Mai	21	Dead	Moderate	REMOVE	<Null>	<Null>	<Null>
460-11878	Lincoln	Par Alnus rubr.	Red alder	10	Dead	Moderate	REMOVE		763 47.5323	-122.399
460-11860	Lincoln	Par Pseudotsu	Douglas Fir	33	Poor	Moderate	REMOVE		554 47.53454	-122.395
460-11861	Lincoln	Par Pseudotsu	Douglas Fir	32	Poor	Moderate	REMOVE		563 47.53438	-122.394
460-11867	Lincoln	Par Prunus sp	Cherry Tre	5	Dead	Moderate	REMOVE		625 47.53515	-122.396
460-11868	Lincoln	Par Acer macr	Bigleaf Ma	98	Poor	Moderate	REMOVE		631 47.5348	-122.396
460-11824	Lincoln	Par Betula occi	Water Birc	12	Dead	Moderate	REMOVE		206 47.53036	-122.393
460-11826	Lincoln	Par Thuja plica	Western R	23	Dead	Moderate	REMOVE		212 47.52864	-122.393

460-11827	Lincoln Park	Chamaecyparis Lawson's C	18	Poor	Moderate	REMOVE	217	47.52701	-122.393		
460-11831	Lincoln Park	Arbutus m. Pacific Mar	17	Poor	Moderate	REMOVE	260	47.52881	-122.395		
460-11835	Lincoln Park	Arbutus m. Pacific Mar	19	Poor	Moderate	REMOVE	305	47.52745	-122.395		
460-11849	Lincoln Park	Thuja plicata Western R.	19	Poor	Moderate	REMOVE	438	47.53609	-122.394		
460-13129	Lincoln Park	Arbutus m. Pacific Mar	17	Dead	Moderate	REMOVE	<Null>	<Null>	<Null>		
460-11881	Lincoln Park	Acer platanoides Norway M.	13	Poor	Moderate	REMOVE	790	47.52874	-122.399		
460-11883	Lincoln Park	Pseudotsuga Douglas Fir	24	Poor	Moderate	REMOVE	817	47.53003	-122.4		
460-11839	Lincoln Park	Arbutus m. Pacific Mar	17	Dead	Moderate	REMOVE	338	47.52941	-122.399		
460-11840	Lincoln Park	Fagus sylvatica Common E	19	Poor	Moderate	REMOVE	355	47.53324	-122.396		
460-11879	Lincoln Park	Alnus rubra Red alder	25	Dead	Moderate	REMOVE	768	47.53179	-122.399		
460-11848	Lincoln Park	Alnus rubra Red alder	6	Dead	Moderate	REMOVE	435	47.53661	-122.394		
460-11856	Lincoln Park	Abies grandis Grand Fir	13	Poor	Moderate	REMOVE	508	47.53414	-122.393		
460-11829	Lincoln Park	Cryptomeria Japanese C	22	Poor	Moderate	REMOVE	237	47.52896	-122.393		
460-11834	Lincoln Park	Chamaecyparis Sawara Cyp	36	Poor	Moderate	REMOVE	291	47.52679	-122.394		
460-11842	Lincoln Park	Arbutus m. Pacific Mar	31	Dead	Moderate	REMOVE	373	47.5367	-122.395		
460-11845	Lincoln Park	Picea abies European !	16	Dead	Moderate	REMOVE	403	47.53173	-122.393		
460-11845	Lincoln Park	Pseudotsuga Douglas Fir	20	Poor	Moderate	REMOVE	406	47.53208	-122.393		
460-12560	Lincoln Park	Arbutus sp Arbutus	29	Poor	Moderate	REMOVE	<Null>	<Null>	<Null>		
460-12940	Lincoln Park	Abies grandis Grand Fir	25	Dead	Moderate	REMOVE	<Null>	<Null>	<Null>		
460-13127	Lincoln Park	Arbutus m. Pacific Mar	30	Dead	Moderate	REMOVE	<Null>	<Null>	<Null>		
460-11874	Lincoln Park	Alnus rubra Red alder	12	Poor	Moderate	REMOVE	693	47.53234	-122.399		
460-11874	Lincoln Park	Alnus rubra Red alder	30	Poor	Moderate	REMOVE	694	47.53232	-122.399		
460-11875	Lincoln Park	Acer macrocarpum Bigleaf Ma	72	Poor	Moderate	REMOVE	704	47.53116	-122.4		
460-11881	Lincoln Park	Prunus sp Cherry Tre	10	Dead	Moderate	REMOVE	798	47.52736	-122.396		
460-11883	Lincoln Park	Pseudotsuga Douglas Fir	25	Poor	Moderate	REMOVE	818	47.53013	-122.4		
460-11885	Lincoln Park	Arbutus m. Pacific Mar	22	Poor	Moderate	REMOVE	836	47.52676	-122.395		
460-11866	Lincoln Park	Acer macrocarpum Bigleaf Ma	21	Dead	Moderate	REMOVE	611	47.53629	-122.395		
460-11867	Lincoln Park	Acer macrocarpum Bigleaf Ma	6	Poor	Moderate	REMOVE	617	47.53634	-122.396		
460-11867	Lincoln Park	Acer macrocarpum Bigleaf Ma	11	Poor	Moderate	REMOVE	621	47.53693	-122.396		
460-11848	Lincoln Park	Thuja plicata Western R.	10	Dead	Moderate	REMOVE	434	47.53658	-122.394		
460-11849	Lincoln Park	Acer macrocarpum Bigleaf Ma	9	Poor	Moderate	REMOVE	443	47.53538	-122.395		
TREEID	Park	Species	Common	DBH	Condition	Risk	DMaintenance	RESERVEDTEXT	LATITUDE	LONGITUDE	
460-11874	Lincoln Park	Pseudotsuga Douglas Fir	43	Good	Low	INSPECT	<Null>	<Null>	688	47.53471	-122.395
460-11876	Lincoln Park	Pseudotsuga Douglas Fir	34	Poor	Low	INSPECT	<Null>	<Null>	708	47.53093	-122.4
460-11852	Lincoln Park	Pseudotsuga Douglas Fir	37	Good	Low	INSPECT	<Null>	<Null>	474	47.53421	-122.394
460-11853	Lincoln Park	Pseudotsuga Douglas Fir	51	Fair	Low	INSPECT	<Null>	<Null>	484	47.53601	-122.394
460-11855	Lincoln Park	Pseudotsuga Douglas Fir	38	Fair	Low	INSPECT	<Null>	<Null>	497	47.53431	-122.394
460-11861	Lincoln Park	Pseudotsuga Douglas Fir	39	Fair	Low	INSPECT	<Null>	<Null>	564	47.53437	-122.394
460-12938	Lincoln Park	Pseudotsuga Douglas Fir	36	Fair	Moderate	INSPECT	<Null>	<Null>	<Null>	<Null>	<Null>
460-12714	Lincoln Park	Pseudotsuga Douglas Fir	42	Good	Low	INSPECT	<Null>	<Null>	<Null>	<Null>	<Null>
460-11843	Lincoln Park	Pseudotsuga Douglas Fir	43	Fair	Low	INSPECT	<Null>	<Null>	384	47.53311	-122.397
460-11831	Lincoln Park	Pseudotsuga Douglas Fir	30	Fair	<Null>	INSPECT	<Null>	<Null>	265	47.52809	-122.394
460-11853	Lincoln Park	Pseudotsuga Douglas Fir	52	Fair	Low	INSPECT	<Null>	<Null>	479	47.5367	-122.394
460-11854	Lincoln Park	Acer macrocarpum Bigleaf Ma	31	Fair	Low	INSPECT	<Null>	<Null>	487	47.53521	-122.394
460-11858	Lincoln Park	Pseudotsuga Douglas Fir	22	Fair	Low	INSPECT	<Null>	<Null>	535	47.53638	-122.393
460-11838	Lincoln Park	Pseudotsuga Douglas Fir	31	Fair	Moderate	INSPECT	<Null>	<Null>	327	47.52745	-122.394
460-11842	Lincoln Park	Pseudotsuga Douglas Fir	47	Fair	Low	INSPECT	<Null>	<Null>	374	47.53689	-122.394
460-11850	Lincoln Park	Tsuga heterophylla Western H	30	Good	Moderate	INSPECT	<Null>	<Null>	448	47.53485	-122.394
460-11884	Lincoln Park	Pseudotsuga Douglas Fir	61	Fair	Low	INSPECT	<Null>	<Null>	825	47.53053	-122.4
460-11853	Lincoln Park	Pseudotsuga Douglas Fir	34	Fair	Low	INSPECT	<Null>	<Null>	486	47.53535	-122.394
460-11862	Lincoln Park	Pseudotsuga Douglas Fir	18	Fair	Low	INSPECT	<Null>	<Null>	570	47.53441	-122.394
460-11886	Lincoln Park	Pseudotsuga Douglas Fir	49	Fair	Low	INSPECT	<Null>	<Null>	842	47.52984	-122.399
460-11839	Lincoln Park	Arbutus m. Pacific Mar	36	Fair	Low	INSPECT	<Null>	<Null>	340	47.52969	-122.399
460-11853	Lincoln Park	Pseudotsuga Douglas Fir	45	Fair	Low	INSPECT	<Null>	<Null>	480	47.53682	-122.394
460-11854	Lincoln Park	Tsuga heterophylla Western H	36	Good	Low	INSPECT	<Null>	<Null>	490	47.53479	-122.394
460-11858	Lincoln Park	Acer macrocarpum Bigleaf Ma	32	Fair	Low	INSPECT	<Null>	<Null>	530	47.53555	-122.393
460-11859	Lincoln Park	Pseudotsuga Douglas Fir	31	Poor	Low	INSPECT	<Null>	<Null>	542	47.53637	-122.394