

Pump Station 22 Retrofit & Force Main Replacement



Reduce Combined Sewer Overflows | Improve Service Reliability | Create a Public Open Space

Project Overview

The Magnolia Basin 60 is a combined sewer basin located south of the Ship Canal and directly to the east of Discovery Park. In this area, stormwater and sewage in the basin are collected and flow to Pump Station 22.

When wastewater and drainage systems fail or are overwhelmed by heavy rains, sewage and stormwater can back up into homes, streets, and waterways. Overflows into waterways, often called combined sewer overflows (CSOs), impact our regional water quality and are a public health risk.

This project will upgrade an existing pump station and force main to reduce the occurrence of combined sewer overflows into Salmon Bay and improve service reliability for SPU customers.



Map of project area

Schedule

Construction is scheduled to begin in mid-2019 and should take about 6 to 10 months.

Note, the construction schedule and duration are dependent on weather and other factors.



Photo of the Salmon Bay Bridge

Benefits to the Community

- Improve water quality and public health
- Reduce risk of pump station failure
- Comply with industry standards, which will improve working conditions for SPU crews
- Pavement upgrades and new ADA ramps
- New public access and viewpoint at the street end of W. Cramer Street

Construction Impacts

- Reduced roadway access and parking restrictions
- Brief, temporary interruption to water and gas services
- Increased traffic on Texas Way and 40th Avenue W. for contractor staging at Fort Lawton
- Typical work hours will be weekday, daytime
- Construction-related noise, dirt, dust, and vibration

Stay in Touch

We will provide updates via the website and email prior to and during construction.

Learn more and sign up for email updates by visiting the project website:

www.seattle.gov/util/EnvironmentConservation/Projects/PumpStation22

Project Contact

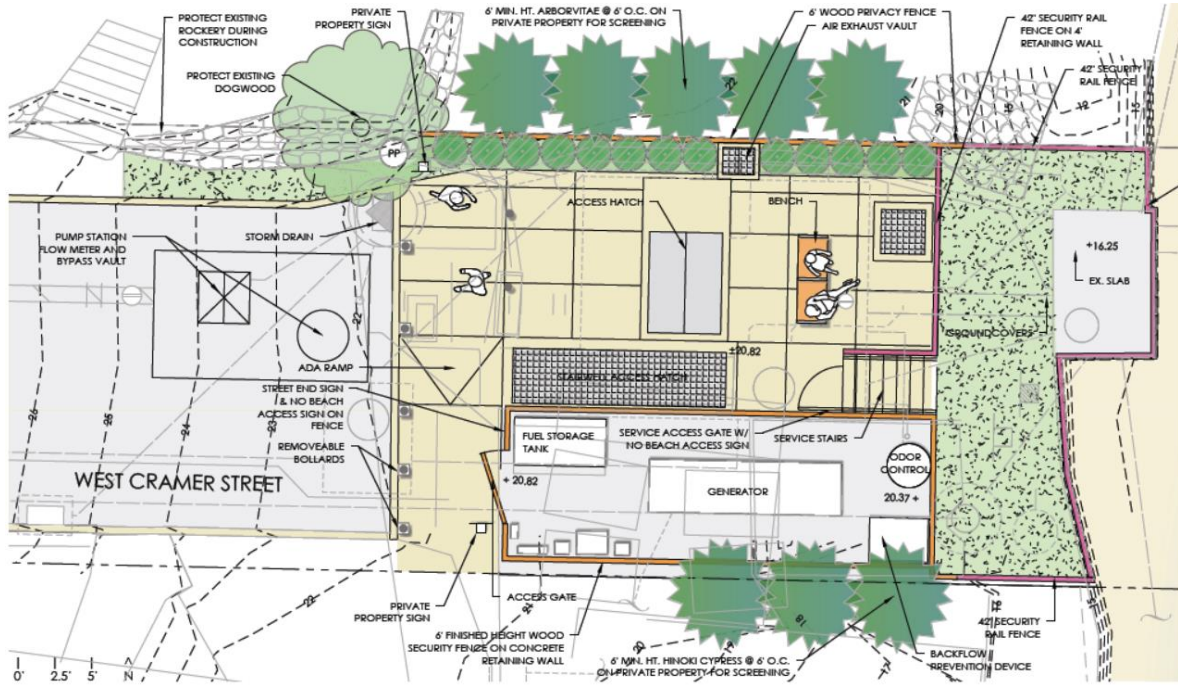
Jerry Waldron, Project Manager

jerry.waldron@seattle.gov | (206) 684-5061

www.seattle.gov/util/EnvironmentConservation/Projects/PumpStation22

Pump Station 22 Design

We balanced site constraints, pump station functions, industry standards, and worker safety with feedback from the community to update the pump station and street-end public open space designs.



Street-end Public Open Space and Viewpoint

We heard that the community would like a place to visit and enjoy views of Salmon Bay. As part of this project, we will provide a public amenity while also working to protect Seattle’s waterways and improve service reliability. The inclusion of a street-end public open space is also required by Seattle Municipal Code 23.60A.578.



Design graphic and rendering are conceptual

SPU is also performing an emergency force main replacement project in the area. This is a separate project that will replace a damaged sewer force main that runs underneath the Shilshole Bay Waterway west of Commodore Park. Learn more at: www.seattle.gov/util/EnvironmentConservation/Projects/PumpStation43.