



City of Seattle  
Edward B. Murray, Mayor

**Department of Transportation**  
Scott Kubly, Director

**Roosevelt Parking**

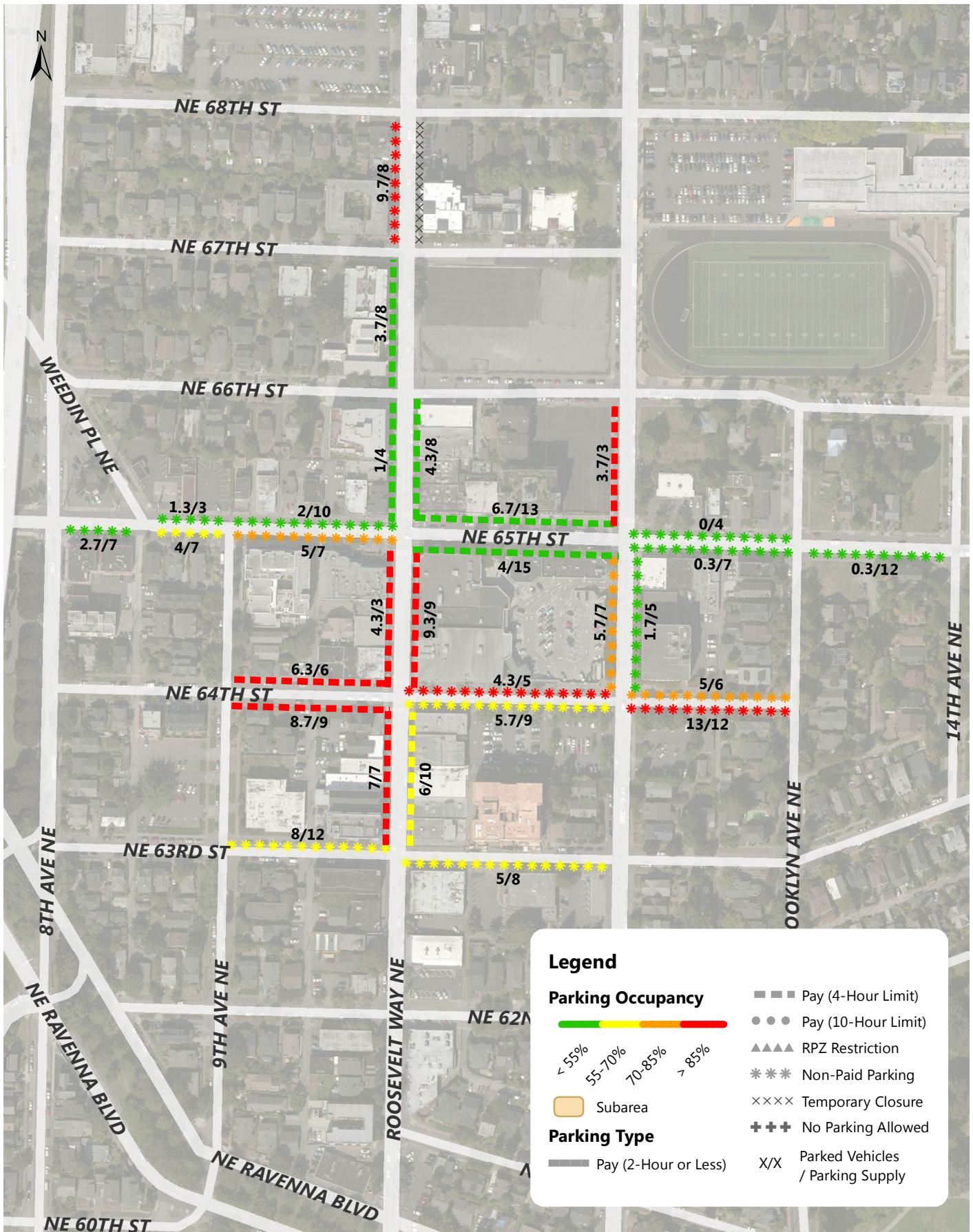
**December 11, 2014**

Olympic Pizza, 6413 Roosevelt Way NE

- |   |      |
|---|------|
| 1. Seattle Parking Management Overview, 2013 Study and Meetings | SDOT |
| 2. Parking Handouts   | SDOT |
| a. Parking occupancy maps, 3-hour peak and 7 PM                 |      |
| b. Paid parking occupancy by time of day                        |      |
| c. RPZ map  |      |
| 3. Other Topics   | SDOT |
| a. Annual parking study   |      |
| b. Light rail parking   |      |
| c. Pay station replacement                                      |      |
| 4. Questions and Discussion                                     | All  |

SDOT Staff:

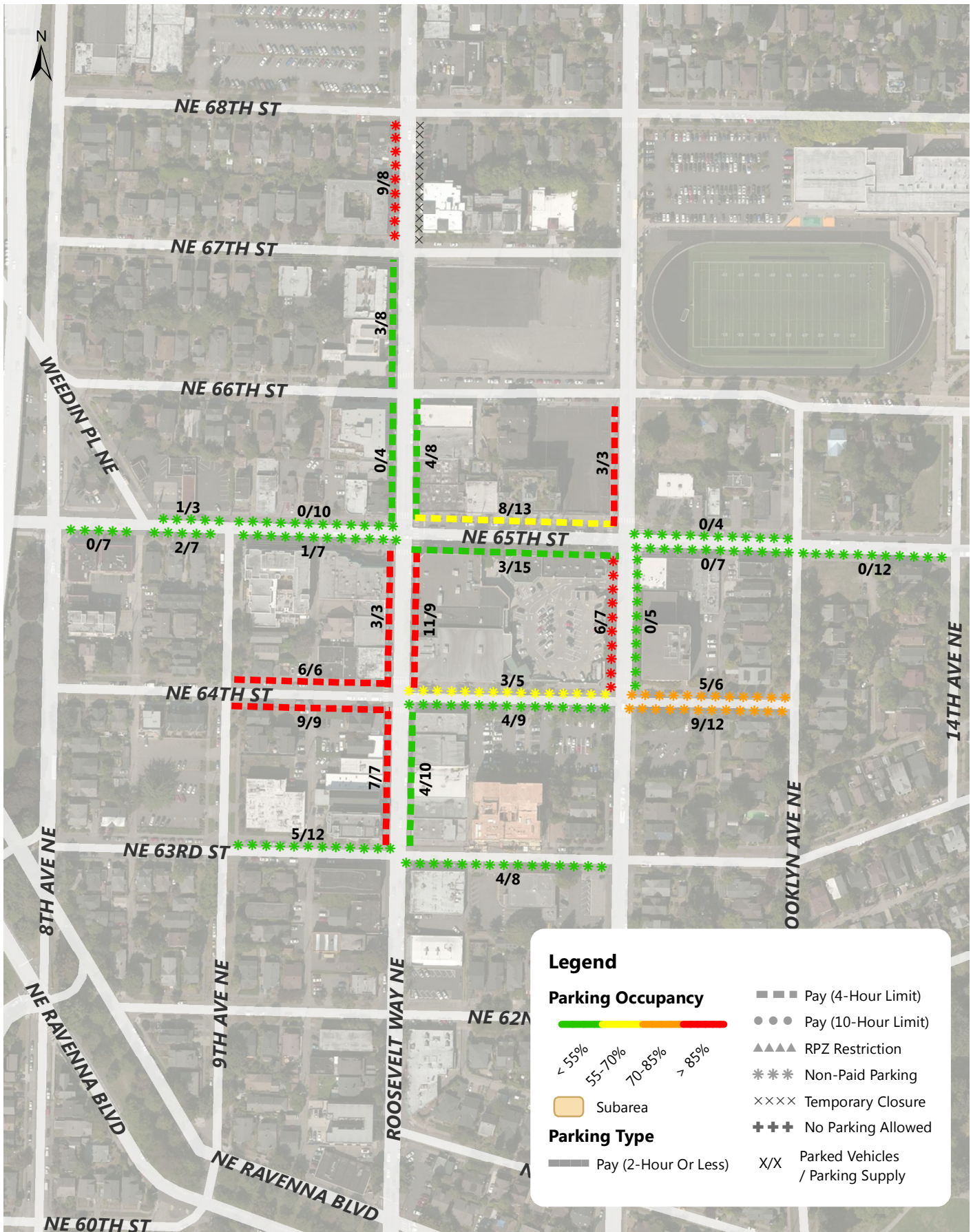
Jonathan Williams, [jonathan.williams2@seattle.gov](mailto:jonathan.williams2@seattle.gov), 206-733-9026



## Roosevelt Weekday Parking Occupancy Average Peak 3 Hours of Each Blockface (8AM-5PM)

Annual Parking Study - Spring 2014





## Roosevelt Weekday Parking Occupancy 7PM Occupancy of Each Blockface

Annual Parking Study - Spring 2014



STUDY AREA

# ROOSEVELT

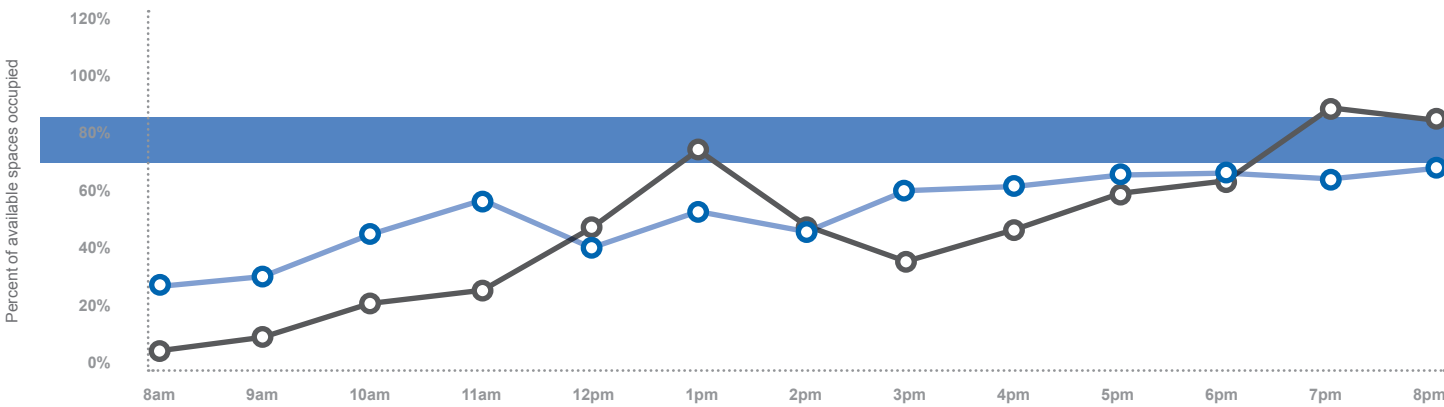
Roosevelt paid parking area is primarily on Roosevelt Ave NE and NE 65th St with additional blocks on 12th Ave NE and NE 64th St.

→2013 parking regulations: Rate \$1.00/hr, paid hours 8 AM-6 PM, time limit 4 hrs.

DAYTIME PEAK OCCUPANCY (3 HIGHEST HOURS) AND 7 PM OCCUPANCY ■ Watch list ■ Target Range 70%-85%




OCCUPANCY BY TIME OF DAY ○ March 2013 ○ May 2014 ■ Target Range 70%-85%



FALL 2014 PARKING REGULATIONS

RATE PER HOUR




**\$1.00**

PAID HOURS

**8AM to 6PM**

TIME LIMIT



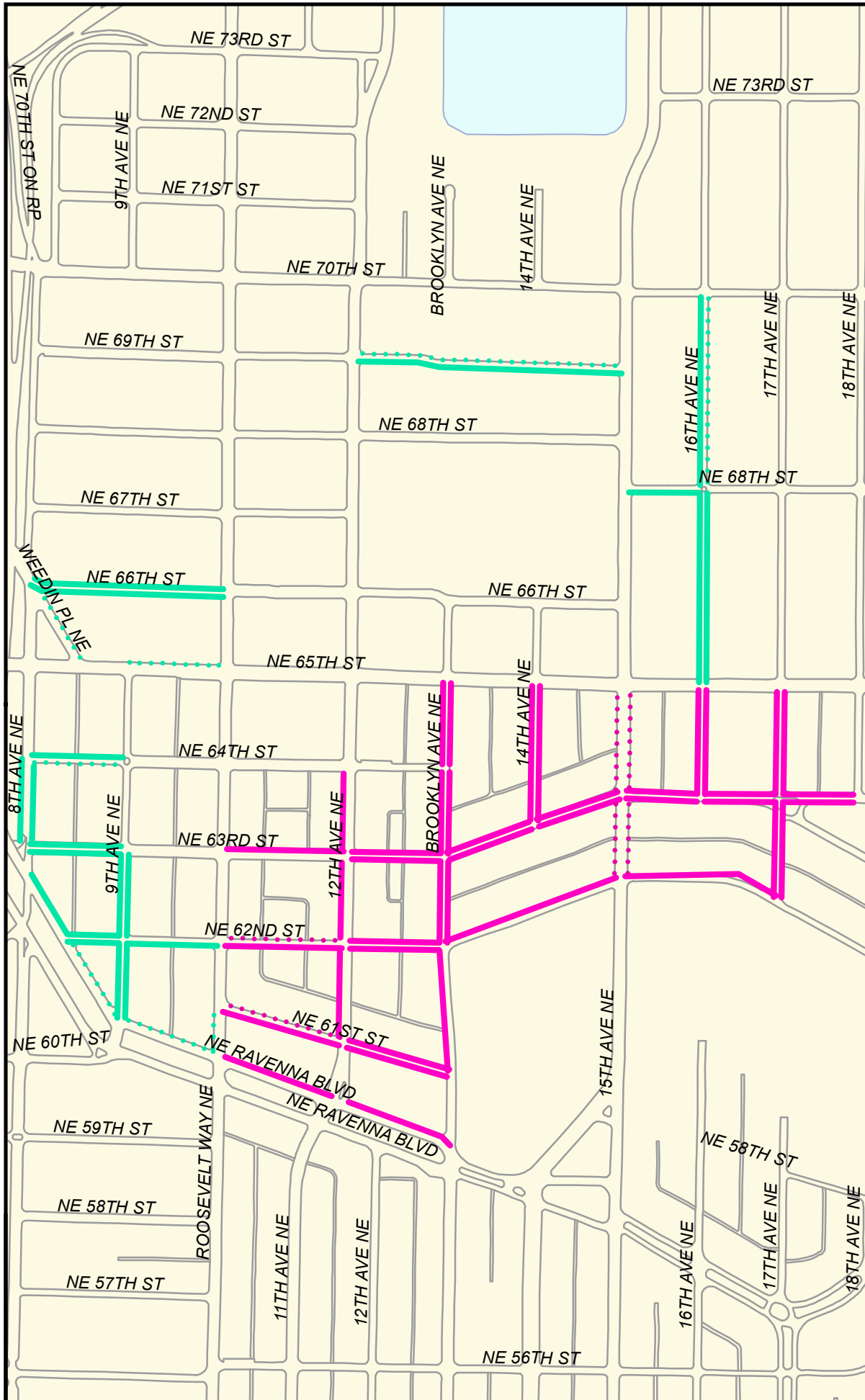
**4hrs**

2014 ACTION



→NO CHANGE

While daytime occupancy is below the target at 65%, the rate in this area is already at the minimum rate allowed by City Code.



**Legend**

**Area**

- 1
- 2

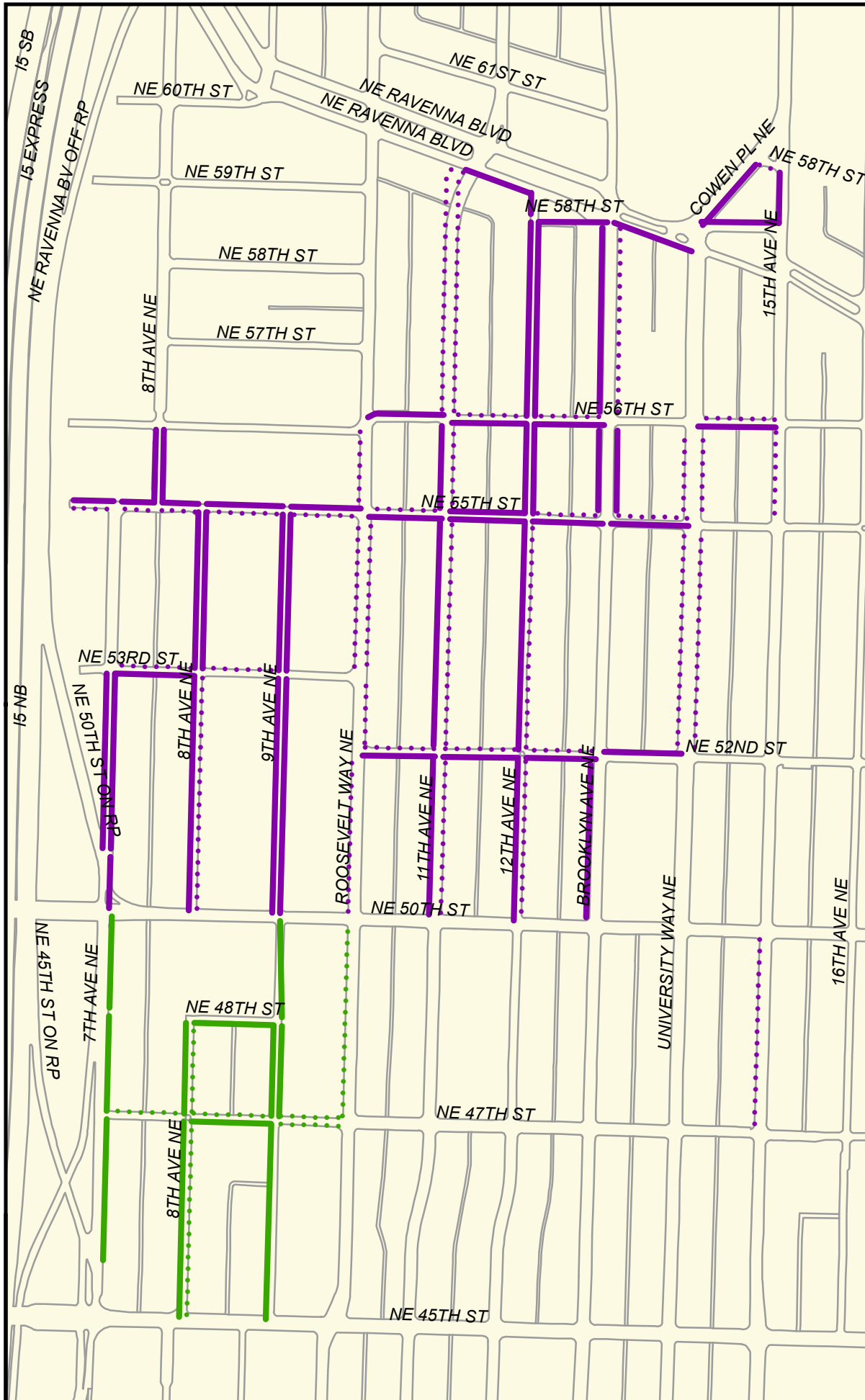
Dotted lines show blocks without Zone 19 RPZ signs, but where residents are eligible for Zone 19 permits.



©2013  
 THE CITY OF SEATTLE  
 All rights reserved.  
 Produced by the Seattle  
 Department of  
 Transportation  
 No warranties of any  
 sort, including accuracy,  
 fitness or  
 merchantability,  
 accompany this product.  
 Coordinate System:  
 State Plane, NAD83-91,  
 Washington, North Zone  
 PLOT DATE : 6/30/2014  
 AUTHOR : Edmonds  
 Q:\Traffic Management\  
 Parking Permits\RPZs\  
 RPZ Zone Maps\  
 Zone19Map.mxd



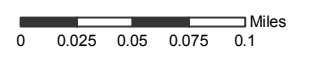
**RESTRICTED PARKING ZONE 19 - Roosevelt**



**Legend**

- Area 1
- Area 2

Dotted lines indicate blocks without Zone 10 RPZ signs (e.g. No Parking) but residents are eligible for Zone 10 permits.



©2013  
 THE CITY OF SEATTLE  
 All rights reserved.  
 Produced by the Seattle  
 Department of  
 Transportation  
 No warranties of any  
 sort, including accuracy,  
 fitness or  
 merchantability,  
 accompany this product.  
 Coordinate System:  
 State Plane, NAD83-91,  
 Washington, North Zone  
 PLOT DATE : 8/1/2013  
 AUTHOR : Edmonds  
 Q:\Traffic Management\  
 Parking Permits\RPZs\  
 RPZ Zone Maps\  
 Zone10Map.mxd



# RESTRICTED PARKING ZONE 10 - University District West